

Frame Relay Traffic Shaping Flowchart

Document ID: 14195

- Introduction**
- Prerequisites**
 - Requirements
 - Components Used
 - Conventions
- Flowchart**
- Related Information**

Introduction

The flowchart below illustrates packet flow when you implement Frame Relay traffic shaping.

Prerequisites

Requirements

There are no specific requirements for this document.

Components Used

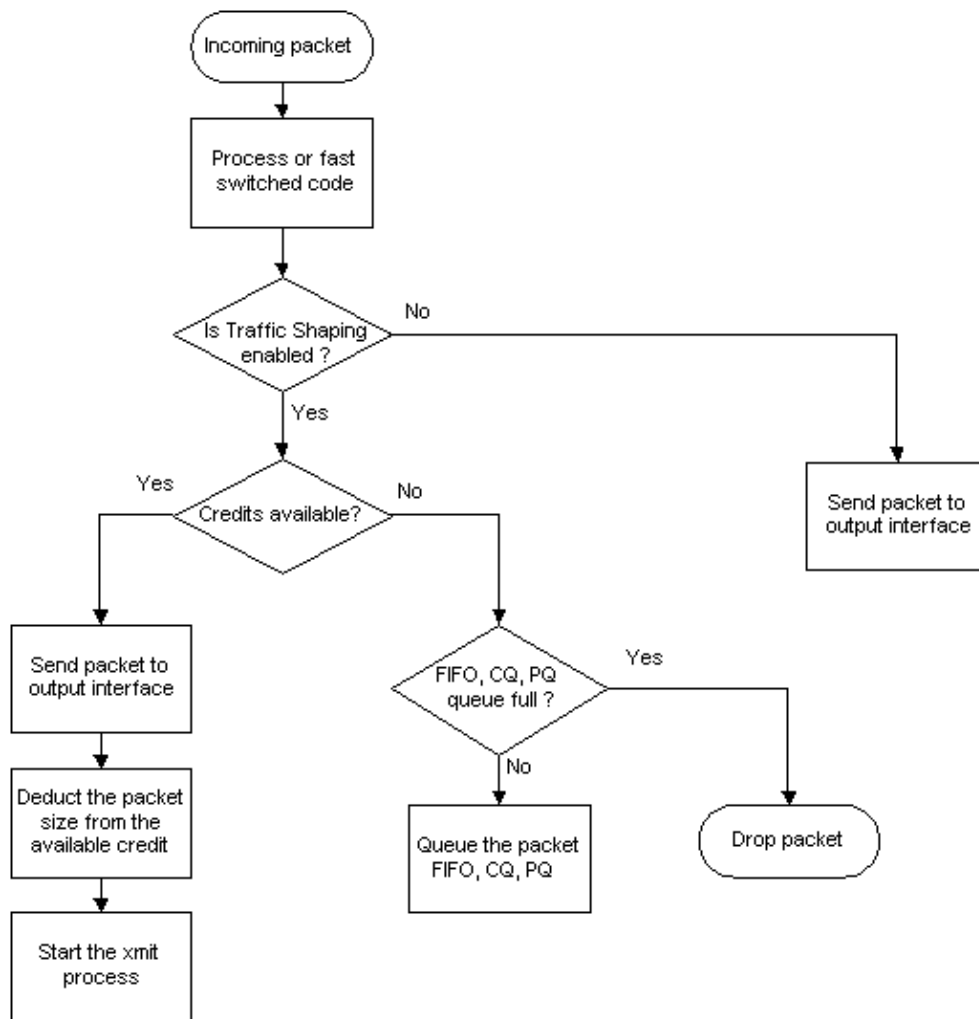
This document is not restricted to specific software and hardware versions.

Conventions

For more information on document conventions, see the [Cisco Technical Tips Conventions](#).

Flowchart

For further information on traffic shaping, see the [Policing and Shaping Overview of the Cisco IOS Software Releases 12.2 Mainline](#).



The terms used in this flowchart have the following definitions:

- FIFO: first-in-first-out
- CQ: custom queuing
- PQ: priority queuing

Related Information

- [More Frame Relay Traffic Shaping Information](#)
 - [Frame Relay Traffic Shaping – Token Bucket Flowchart](#)
 - [Frame Relay Configuration Guide](#)
 - [Frame Relay Technology Support Page](#)
 - [Technical Support – Cisco Systems](#)
-

[Contacts & Feedback](#) | [Help](#) | [Site Map](#)

© 2008 – 2009 Cisco Systems, Inc. All rights reserved. [Terms & Conditions](#) | [Privacy Statement](#) | [Cookie Policy](#) | [Trademarks of Cisco Systems, Inc.](#)

Updated: Nov 17, 2007

Document ID: 14195
