

T1 Error Event Troubleshooting Flowchart

Document ID: 14174

- Introduction**
- Before You Begin**
 - Conventions
 - Prerequisites
 - Components Used
- Troubleshooting Flowchart**
- Related Information**

Introduction

This document provides a flowchart for T1 error event troubleshooting purposes.

Before You Begin

Conventions

For more information on document conventions, see the Cisco Technical Tips Conventions.

Prerequisites

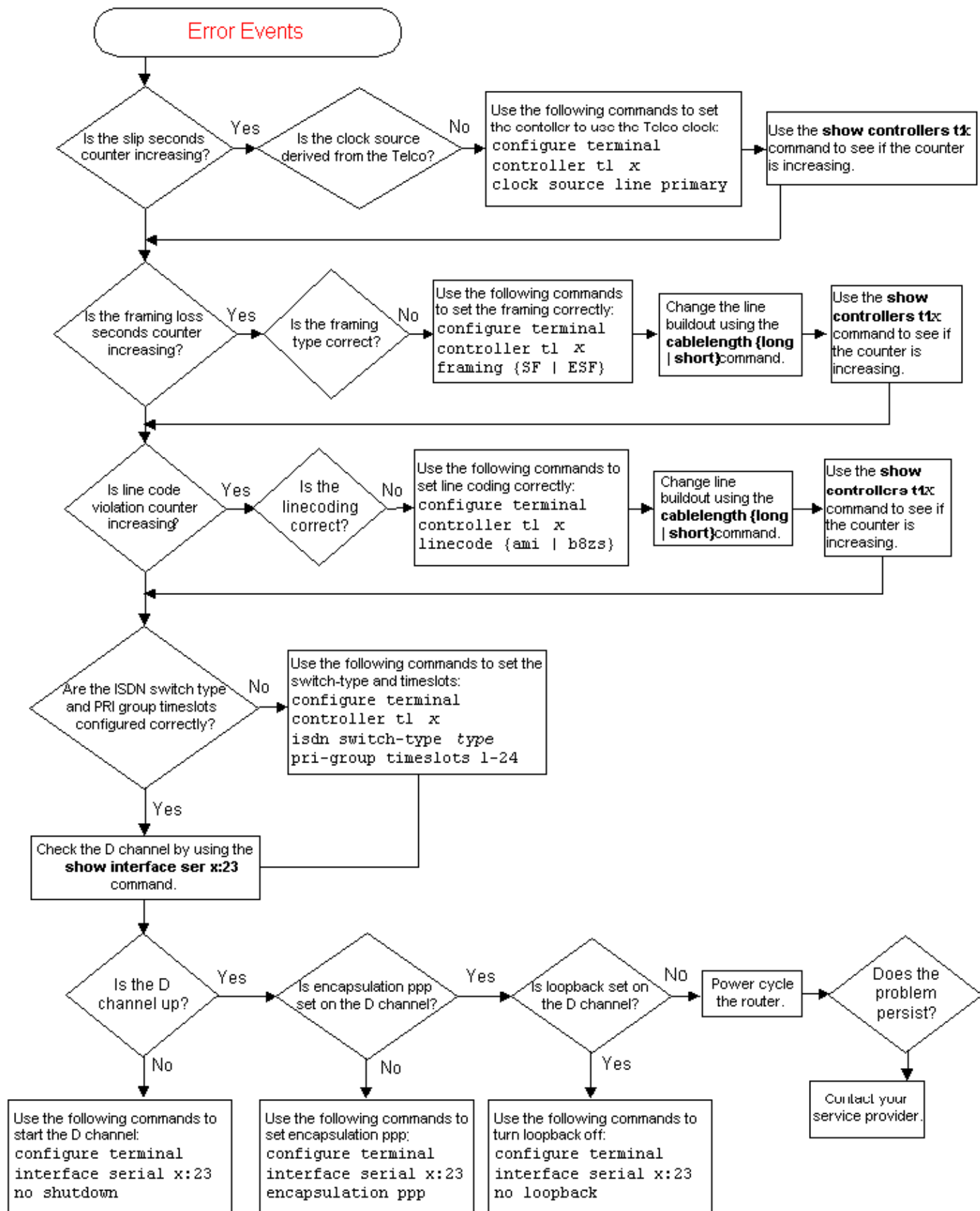
There are no specific prerequisites for this document.

Components Used

This document is not restricted to specific software and hardware versions.

Troubleshooting Flowchart

To see more information, click the command boxes.



Related Information

- **T1 Troubleshooting**
 - **T1 Layer 1 Troubleshooting**
 - **T1 Alarm Troubleshooting**
 - **T1 PRI Troubleshooting**
 - **Hard Plug Loopback Test**
 - **Technical Support – Cisco Systems**
-

[Contacts & Feedback](#) | [Help](#) | [Site Map](#)

© 2007 – 2008 Cisco Systems, Inc. All rights reserved. [Terms & Conditions](#) | [Privacy Statement](#) | [Cookie Policy](#) | [Trademarks of Cisco Systems, Inc.](#)

Updated: Sep 09, 2005

Document ID: 14174
