

Blue and Yellow T1 Alarm Troubleshooting

Document ID: 14173

Introduction

Prerequisites

Requirements

Components Used

Conventions

Background Information

NetPro Discussion Forums – Featured Conversations

Related Information

Introduction

This document provides information about how to troubleshoot the Blue and Yellow T1 alarm.

Prerequisites

Requirements

There are no specific requirements for this document.

Components Used

This document is not restricted to specific software and hardware versions.

The information in this document was created from the devices in a specific lab environment. All of the devices used in this document started with a cleared (default) configuration. If your network is live, make sure that you understand the potential impact of any command.

Conventions

Refer to Cisco Technical Tips Conventions for more information on document conventions.

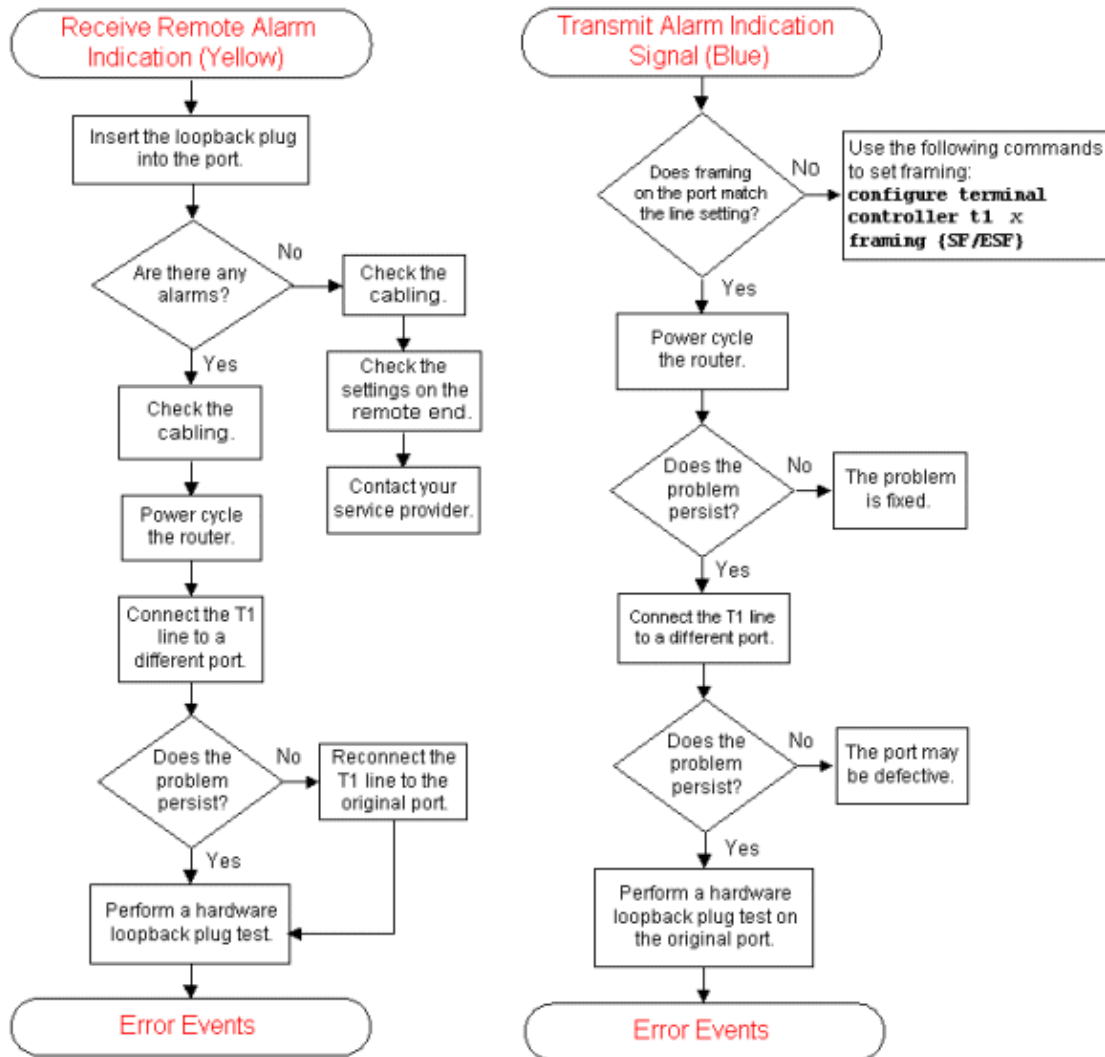
Background Information

For more information about the Receive Remote Alarm Indication (Yellow) chart, click these links that correspond to the command boxes in the graphic:

- The box Insert the loopback plug into the port links to the Hard Plug Loopback Test.
- The box Check the cabling links to T1 Alarm Troubleshooting.
- The box Power cycle the router links to T1 Alarm Troubleshooting.
- The box Connect the T1 line to a different port links to T1 Alarm Troubleshooting.
- The box Perform a hardware loopback plug test links to the Hard Plug Loopback Test.
- The box Error Events links to the T1 Error Event Troubleshooting Flowchart.

For more information about the Transmit Alarm Indication Signal (Blue) chart, click these links that correspond to the command boxes in the graphic:

- The box Configure terminal controller t1 x framing {SF/ESF} links to T1 Alarm Troubleshooting.
- The box Connect the T1 to a different port links to T1 Alarm Troubleshooting.
- The box Perform a hardware loopback plug test on the original port links to the Hard Plug Loopback Test.
- The box Error Events links to the T1 Error Event Troubleshooting Flowchart.



NetPro Discussion Forums – Featured Conversations

Networking Professionals Connection is a forum for networking professionals to share questions, suggestions, and information about networking solutions, products, and technologies. The featured links are some of the most recent conversations available in this technology.

NetPro Discussion Forums – Featured Conversations for Access
Network Infrastructure: Remote Access

Related Information

- T1 Alarm Troubleshooting
- Hard Plug Loopback Test
- T1 Error Event Troubleshooting Flowchart
- Technical Support & Documentation – Cisco Systems

[Contacts & Feedback](#) | [Help](#) | [Site Map](#)

© 2007 – 2008 Cisco Systems, Inc. All rights reserved. [Terms & Conditions](#) | [Privacy Statement](#) | [Cookie Policy](#) | [Trademarks of Cisco Systems, Inc.](#)

Updated: Sep 09, 2005

Document ID: 14173
