

# T1 Alarm Troubleshooting Flowchart

Document ID: 14172

---

**Introduction**

**Prerequisites**

Requirements

Components Used

Conventions

**Flowchart**

**Related Information**

---

## Introduction

This document shows the flowchart for T1 alarm troubleshooting.

## Prerequisites

### Requirements

There are no specific requirements for this document.

### Components Used

This document is not restricted to specific software and hardware versions.

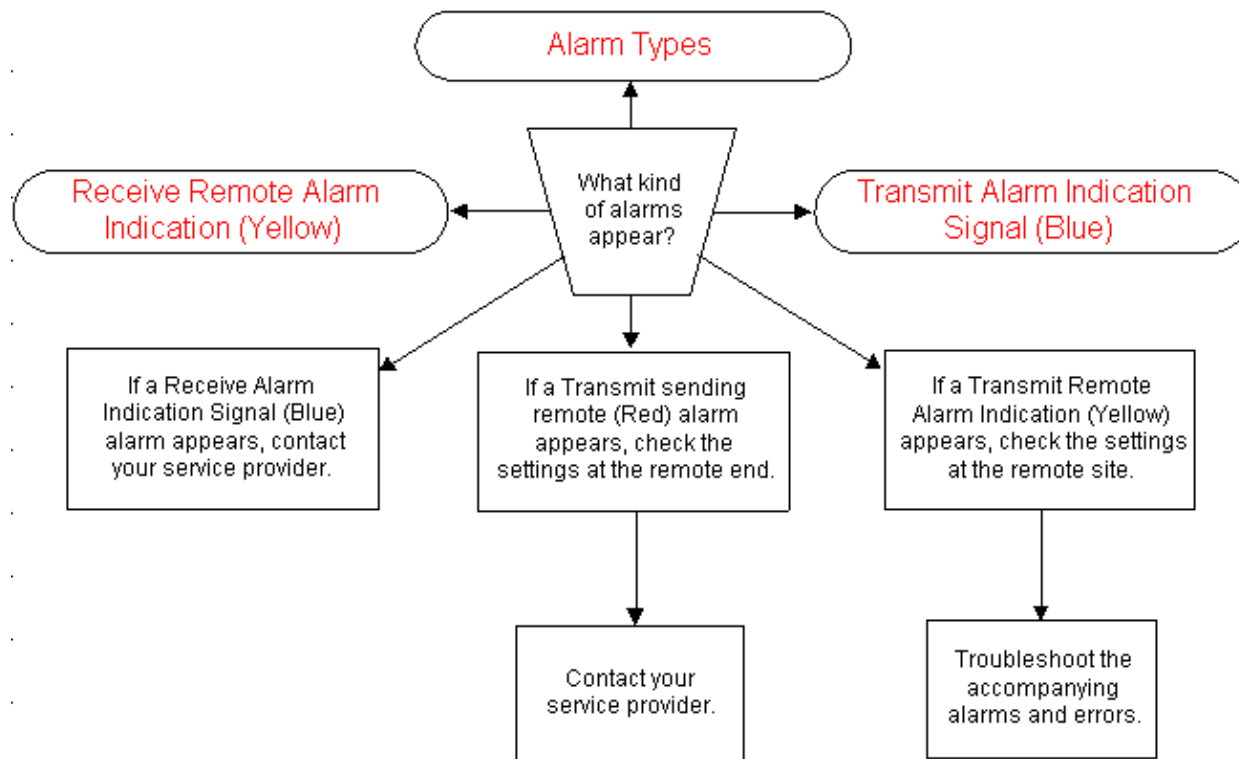
The information in this document was created from the devices in a specific lab environment. All of the devices used in this document started with a cleared (default) configuration. If your network is live, make sure that you understand the potential impact of any command.

### Conventions

For more information on document conventions, refer to the Cisco Technical Tips Conventions.

## Flowchart

To see more information, click the command boxes.



---

## Related Information

- [T1 Troubleshooting](#)
- [T1 Layer 1 Troubleshooting](#)
- [T1 Error Event Troubleshooting](#)
- [T1 PRI Troubleshooting Flowchart](#)
- [Hard Plug Loopback Test](#)
- [Technical Support – Cisco Systems](#)

---

[Contacts & Feedback](#) | [Help](#) | [Site Map](#)

© 2008 – 2009 Cisco Systems, Inc. All rights reserved. [Terms & Conditions](#) | [Privacy Statement](#) | [Cookie Policy](#) | [Trademarks of Cisco Systems, Inc.](#)

---

Updated: Sep 09, 2005

Document ID: 14172

---