

E1 Troubleshooting

Document ID: 14163

Introduction

Prerequisites

Requirements

Components Used

Conventions

Troubleshooting Flowchart

Related Information

Introduction

This document provides an E1 troubleshooting flowchart. To see more information, click the command boxes. Click the information in red to go to the next flow chart.

Prerequisites

Requirements

There are no specific prerequisites for this document.

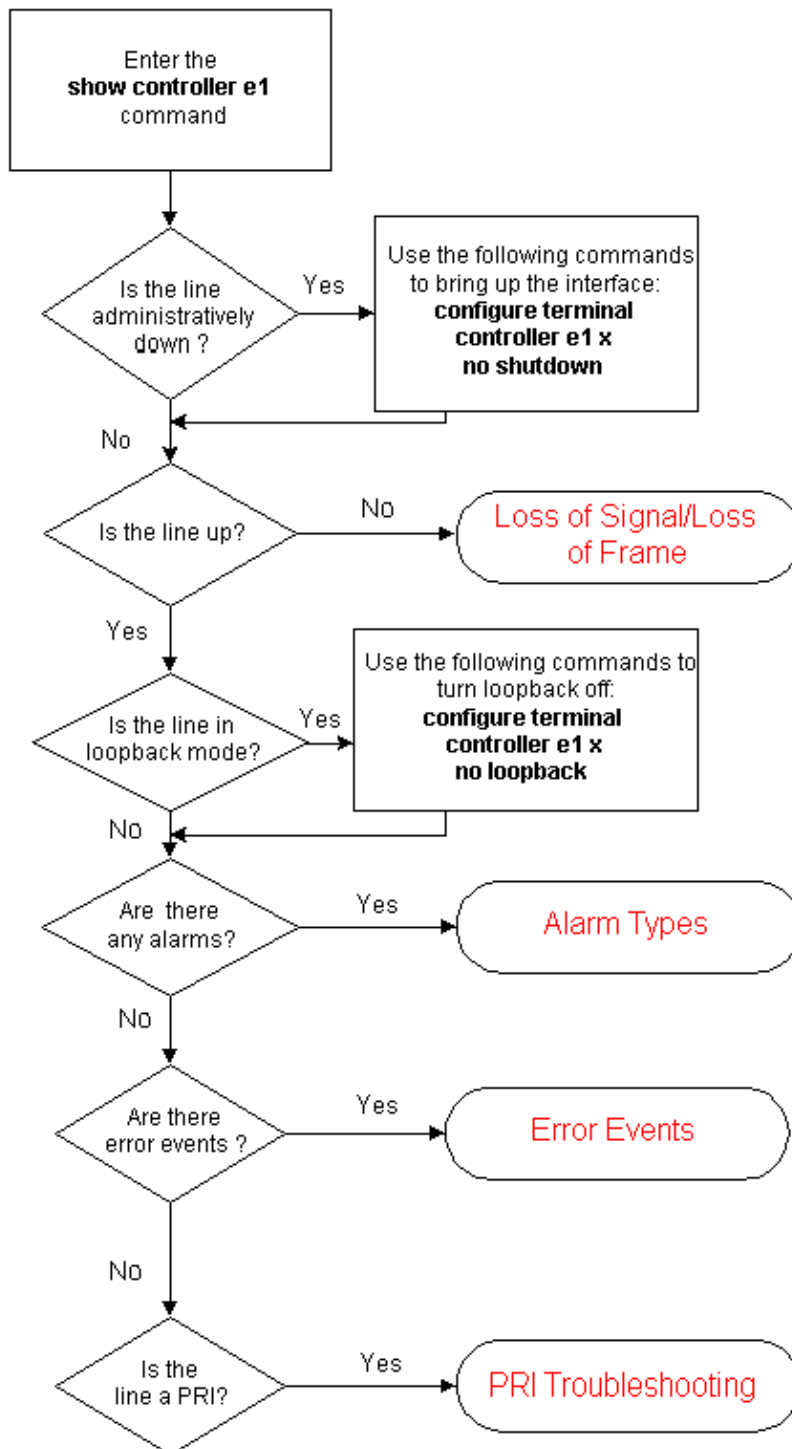
Components Used

This document is not restricted to specific software and hardware versions.

Conventions

For more information on document conventions, see the Cisco Technical Tips Conventions.

Troubleshooting Flowchart



Related Information

- [E1 Layer 1 Troubleshooting](#)
 - [E1 Alarm Troubleshooting](#)
 - [E1 Error Event Troubleshooting](#)
 - [E1 PRI Troubleshooting](#)
 - [Hard Plug Loopback Test for E1 Lines](#)
 - [Understanding Show Controller E1](#)
 - [Access Technology Support Pages](#)
 - [Technical Support – Cisco Systems](#)
-

