

[Solutions](#) [Products](#) [Ordering](#) [Support](#) [Partners](#) [Training](#) [Corporate](#)

Tech Notes



# What Are OSPF Areas and Virtual Links?

[TAC Notice: What's Changing on TAC Web](#)

Document ID: 13703

## Contents

[Introduction](#)[Prerequisites](#)[Requirements](#)[Components Used](#)[Conventions](#)[What Are Areas, Stub Areas, and Not-So-Stubby Areas?](#)[Define a Stub Area](#)[Define a Totally Stub Area](#)[Define a Not-So-Stubby Area](#)[Define an NSSA Totally Stub Area](#)[Normal, Stub, Totally Stub and NSSA Area](#)[Differences](#)[What Are Virtual Links?](#)[NetPro Discussion Forums - Featured Conversations](#)[Related Information](#)

### Help us help you.

**Please rate this document.**

- Excellent
- Good
- Average
- Fair
- Poor

**This document solved my problem.**

- Yes
- No
- Just browsing

**Suggestions for improvement:**

(256 character limit)

## Introduction

This document describes Open Shortest Path First (OSPF) areas and virtual links.

## Prerequisites

### Requirements

There are no specific requirements for this document.

### Components Used

This document is not restricted to specific software and hardware versions.

### Conventions

For more information on document conventions, refer to the [Cisco Technical Tips Conventions](#).

## What Are Areas, Stub Areas, and Not-So-Stubby Areas?

An OSPF network can be divided into sub-domains called areas. An area is a logical collection of OSPF networks, routers, and links that have the same area identification.. A router within an area must maintain a topological database for the area to which it belongs. The router doesn't have detailed information about network topology outside of its area, thereby reducing the size of its database.

Areas limit the scope of route information distribution. It is not possible to do route update filtering within an area. The link-state database (LSDB) of routers within the same area must be synchronized and be exactly the same; however, route summarization and filtering is possible between different areas. The main benefit of creating areas is a reduction in the number of routes to propagate—by the filtering and the summarization of routes.

Each OSPF network that is divided into different areas must follow these rules:

- A backbone area—which combines a set of independent areas into a single domain—must exist.
- Each non-backbone area must be directly connected to the backbone area (though this connection might be a simple logical connection through a virtual link, ).
- The backbone area must not be partitioned—divided into smaller pieces—under any failure conditions, such as link or router down events.



**Caution:** Some of the routers in your network can have partial routing information, which negatively compromises your network, if you do not follow these rules.

Areas are identified by an area ID. Cisco IOS<sup>®</sup> software supports area IDs expressed in IP address format or decimal format, for example, area 0.0.0.0 is equal to area 0. If there are multiple areas in your network, you need to name the backbone area "area 0". Since this backbone connects the areas in your network, it must be a contiguous area. If the backbone is partitioned, parts of the autonomous system will be unreachable, and you'll need to configure virtual links to repair the partition.

A router with interfaces in two (or more) different areas is an area border router. An area border router is in the OSPF boundary between two areas. Both sides of any link always belong to the same OSPF area.

An autonomous system boundary router (ASBR) advertises external destinations throughout the OSPF autonomous system. External routes are the routes redistributed into OSPF from any other protocol. In many cases, external link states make up a large percentage of the link states in the databases of every router. A stub area is an area in which you don't allow advertisements of external routes, thus reducing the size of the database even more. Instead, a default summary route (0.0.0.0) is inserted into the stub area in order to reach these external routes. If you have no external routes in your network, then you have no need to define stub areas.

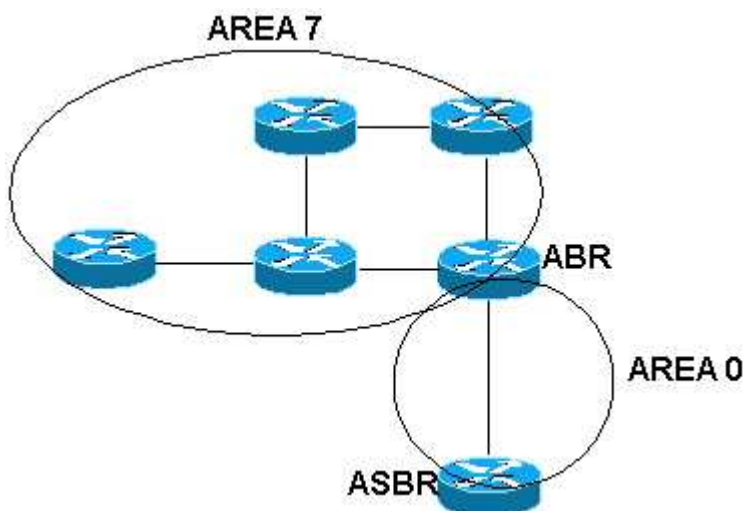
Stub areas are shielded from external routes but receive information about networks that belong to other areas of the same OSPF domain. You can define totally stubby areas. Routers in totally stubby areas keep their LSDB-only information about routing within their area, plus the default route.

Not-so-stubby areas (NSSAs) are an extension of OSPF stub areas. Like stub areas, they prevent the flooding of AS-external link-state advertisements (LSAs) into NSSAs, relying instead on default routing to external destinations. As a result, NSSAs (like stub areas) must be placed at the edge of an OSPF routing domain. NSSAs are more flexible than stub areas in that an NSSA can import external routes into the OSPF routing domain, thereby providing transit service to small routing domains that are not part of the OSPF routing domain.

Refer to the [OSPF Database Explanation Guide](#) to learn more about the OSPF database.

## Define a Stub Area

Use the **area xx stub** command in every router in the area to define an area as a stub area. In the topology shown below, routers in area 7 do not need to know about all the external destinations. The routers in area 7 must send a packet to the ABR to reach the ASBR, no matter what the external destination. Area 7 can be defined as a stub area. To define area 7 as a stub area, configure the **area 7 stub** command in all routers in that area.

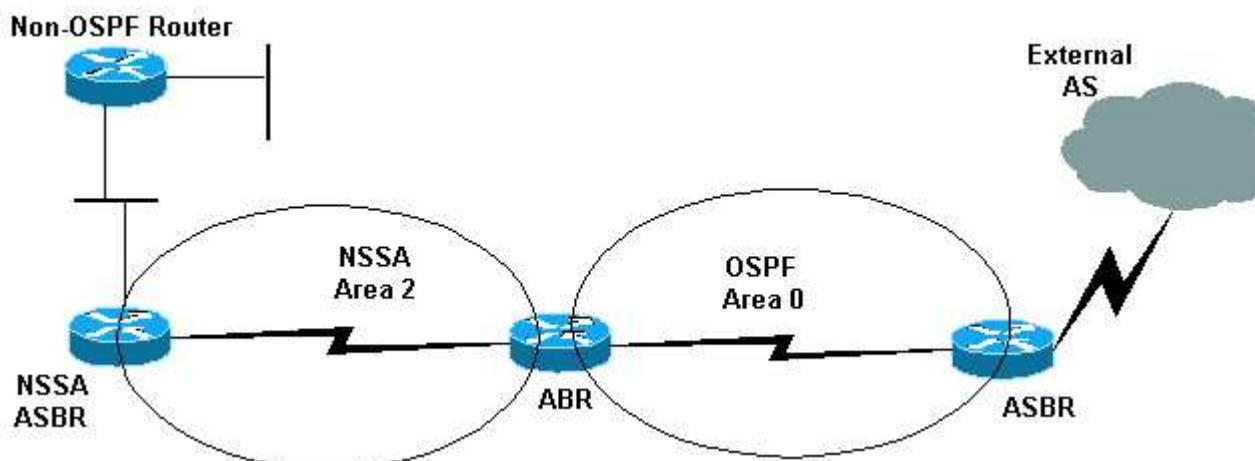


## Define a Totally Stub Area

Use the OSPF router configuration **area xx stub no-summary** command to define a totally stub area. In the previous network diagram, routers in area 7 do not need to know about all external destinations or any summary LSA from the backbone for other areas. The routers in area 7 must send packets to the ABR to reach any destination outside the area 7. Area 7 can be defined as a totally stub area. To define area 7 as a totally stub area, configure the **area 7 stub no summary** command on the ABR.

## Define a Not-So-Stubby Area

Use the OSPF router configuration **area xx nssa** command to define an NSSA. For example, in the topology below, we configured Area 2 as an NSSA by entering the **area 2 nssa** command on all routers in the area. This protects Area 2's internal routers from all the AS-external LSAs imported by the OSPF ASBR, but still allows for the attachment of the non-OSPF router. External routing information is imported into an NSSA in Type-7 LSAs. Type-7 LSAs are similar to Type-5 AS-external LSAs, except that they can only be flooded into the NSSA. In order to further propagate the NSSA external information, the Type-7 LSA must be translated to a Type-5 AS-external-LSA by the NSSA ABR. NSSA is supported in Cisco IOS 11.2 and later.



## Define an NSSA Totally Stub Area

Use the OSPF router configuration command **area xx nssa no-summary** command to define an NSSA totally stub area. In the previous network diagram, we configured area 2 as NSSA totally stub by entering the **area 2 nssa no-summary** command on the NSSA ABR. This keeps any Type 5 AS-external or Type 3 summary routes from leaking in area 2.

## Normal, Stub, Totally Stub and NSSA Area Differences

This table shows the differences between the types of areas defined in this document:

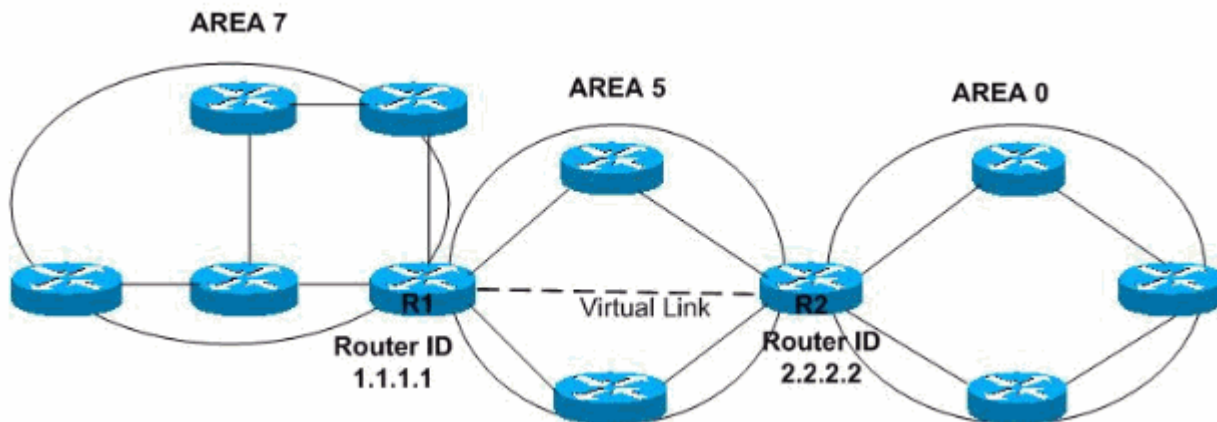
Area	Restriction
Normal	None
Stub	No Type 5 AS-external LSA allowed
Totally Stub	No Type 3, 4 or 5 LSAs allowed except the default summary route
NSSA	No Type 5 AS-external LSAs allowed, but Type 7 LSAs that convert to Type 5 at the NSSA ABR can traverse
NSSA Totally Stub	No Type 3, 4 or 5 LSAs except the default summary route, but Type 7 LSAs that convert to Type 5 at the NSSA ABR are allowed

Refer to the [Types of OSPF Areas](#) section of [How Does OSPF Generate Default Routes?](#) to learn more about different types of areas.

## What Are Virtual Links?

All areas in an OSPF autonomous system must be physically connected to the backbone area (area 0). In some cases where this physical connection is not possible, you can use a virtual link to connect to the backbone through a non-backbone area. As mentioned above, you can also use virtual links to connect two parts of a partitioned backbone through a non-backbone area. The area through which you configure the virtual link, known as a transit area, must have full routing information. The transit area cannot be a stub area.

Use the **area *area-id* virtual-link *router-id*** command to configure a virtual link, where the *area-id* is the area ID assigned to the transit area (this can be either a valid IP address or a decimal value), and where *router-id* is the router ID associated with the virtual link neighbor. In this example, the virtual link connects area 7 to the backbone through area 5:



In this example, the virtual link is created between the routers with router ID 1.1.1.1 and router ID 2.2.2.2. To create the virtual link, configure the **area 5 virtual-link 2.2.2.2** subcommand on router 1.1.1.1 and the **area 5 virtual-link 1.1.1.1** subcommand on router 2.2.2.2. Refer to [Configuring OSPF Authentication on a Virtual Link](#) for more information.

## NetPro Discussion Forums - Featured Conversations

Networking Professionals Connection is a forum for networking professionals to share questions, suggestions, and information about networking solutions, products, and technologies. The featured links are some of the most recent conversations available in this technology.

NetPro Discussion Forums - Featured Conversations for RP
Service Providers: MPLS
<a href="#">MPLS-VPN, PE-CE L3 routing Info doubt ?</a> - Dec 14, 2005
<a href="#">VRF traffic via MPLS TE tunnel</a> - Dec 14, 2005
<a href="#">Vrf-Lite with MPLS requires a PE at the customer side?</a> - Dec 14, 2005
<a href="#">Why do providers like BGP for CE-PE connectivity</a> - Dec 14, 2005
<a href="#">MPLS : IGP route aggregation and broken LSPs.</a> - Dec 13, 2005
Virtual Private Networks: Services
<a href="#">VPN error message</a> - Dec 14, 2005
<a href="#">Cisco SSL WebVPN Windows Domain/AD Logon</a> - Dec 13, 2005
<a href="#">Unable to telnet inside routers from pptp client</a> - Dec 11, 2005
<a href="#">Unable to receive print requests using VPN</a> - Dec 8, 2005
<a href="#">Vpn client can access internet but cannot access internal network</a> - Dec 8, 2005
Virtual Private Networks: Security
<a href="#">how can i use asdm access ssm</a> - Dec 14, 2005
<a href="#">Router As VPN server and Multicasting..</a> - Dec 14, 2005
<a href="#">Connecting to a different subnet when using vpn</a> - Dec 14, 2005
<a href="#">Fixup for VPN getting error</a> - Dec 14, 2005
<a href="#">VPN-Client and Aladdin USB Token</a> - Dec 14, 2005

## Related Information

- [OSPF Support Page](#)
- [OSPF Database Explanation Guide](#)
- [Technical Support - Cisco Systems](#)

---

<a href="#">Home</a>	<a href="#">How to Buy</a>	<a href="#">Login</a>	<a href="#">Profile</a>	<a href="#">Feedback</a>	<a href="#">Site Map</a>	<a href="#">Help</a>
----------------------	----------------------------	-----------------------	-------------------------	--------------------------	--------------------------	----------------------

All contents are Copyright © 1992-2005 Cisco Systems, Inc. All rights reserved. [Important Notices](#) and [Privacy Statement](#).

---

Updated: Aug 10, 2005

Document ID: 13703

---