

Table of Contents

<u>Configuring a Cisco SOHO77 Router With a Single IP Address, DHCP, PPPoA, and PPP-PAP</u>	1
<u>Document ID: 12920</u>	1
<u>Introduction</u>	1
<u>Prerequisites</u>	2
<u>Requirements</u>	2
<u>Components Used</u>	2
<u>Conventions</u>	2
<u>Configure</u>	2
<u>Network Diagram</u>	2
<u>Configurations</u>	2
<u>Verify</u>	4
<u>Troubleshoot</u>	4
<u>NetPro Discussion Forums – Featured Conversations</u>	4
<u>Related Information</u>	4

Configuring a Cisco SOHO77 Router With a Single IP Address, DHCP, PPPoA, and PPP-PAP

Document ID: 12920

Introduction

Prerequisites

- Requirements
- Components Used
- Conventions

Configure

- Network Diagram
- Configurations

Verify

Troubleshoot

NetPro Discussion Forums – Featured Conversations

Related Information

Introduction

This document shows a Cisco SOHO77 digital subscriber line (DSL) Router that connects to a Cisco 6130 digital subscriber line access multiplexer (DSLAM) and terminates on a Cisco 6400 Universal Access Concentrator (UAC). The Cisco SOHO77 is configured as a Dynamic Host Configuration Protocol (DHCP) server with PPP over ATM (PPPoA).

The ISP has given the subscriber a single IP address, 172.18.0.1, for Internet connectivity. However, the subscriber has a small network of PCs and wants to have Internet access for all devices.

The solution is to configure Network Address Translation (NAT) on the Cisco SOHO77. NAT is designed for IP address simplification and conservation. It enables private IP internetworks that use non-registered IP addresses to connect to the Internet. NAT operates on a router and connects two networks. It translates the private (in this case the 10.0.0.0 network) addresses in the internal network to legal (in this case 172.18.0.1) addresses before packets are forwarded to another network. NAT is configured to advertise only one address (172.18.0.1) for the entire network. This provides additional security. It hides the entire internal network behind that address.

NAT has the dual functionality of security and address conservation. It is implemented in remote access environments. An IP address of 10.0.0.1 is manually configured on the Ethernet interface of the Cisco SOHO77. The Cisco SOHO77 is configured to act as a DHCP server. It leases IP addresses to local LAN devices attached to its Ethernet network.

This configuration shows NAT configured for the Ethernet and ATM interfaces. The Ethernet0 interface has an IP address of 10.0.0.1 with a subnet mask of 255.0.0.0. NAT is configured for inside. This means that the interface is connected to the inside network that is subject to NAT translation. The ATM interface "Dialer0" has an IP address of 172.18.0.1 and a subnet mask of 255.255.0.0. NAT is configured for outside. This means that the interface is connected to an outside network, such as the Internet.

Prerequisites

Requirements

There are no specific requirements for this document.

Components Used

The information in this document is based on these software and hardware versions:

- Cisco SOHO77 Customer Premises Equipment (CPE) IOS® Software Release 12.1(3)XP2
- Cisco 6400 UAC–Node Route Processor (NRP) IOS Software Release 12.1(3)DC1
- Cisco 6400 UAC–Node Switch Processor (NSP) IOS Software Release 12.1(3)DB
- Cisco 6130 DSLAM–NI2 IOS Software Release 12.1(5)DA

The information in this document was created from the devices in a specific lab environment. All of the devices used in this document started with a cleared (default) configuration. If your network is live, make sure that you understand the potential impact of any command.

Conventions

For more information on document conventions, refer to the Cisco Technical Tips Conventions.

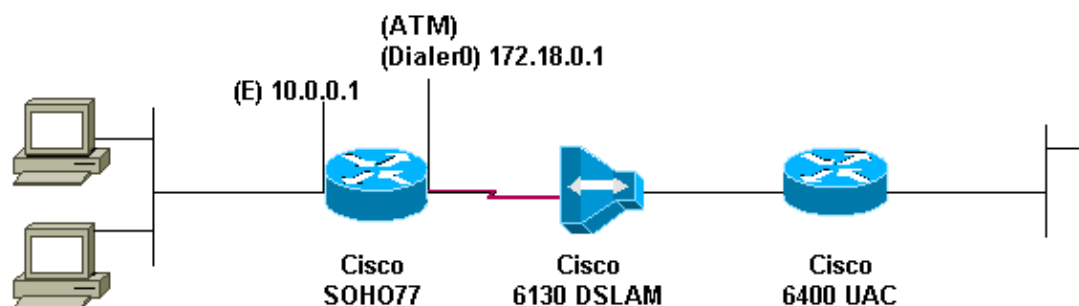
Configure

In this section, you are presented with the information to configure the features described in this document.

Note: To find additional information on the commands used in this document, use the Command Lookup Tool (registered customers only).

Network Diagram

This document uses the network setup shown in this diagram.



Configurations

This document uses this configuration .

```
Cisco SOHO77
```

```

!
version 12.1
service timestamps debug datetime msec
service timestamps datetime msec
!
hostname R1
!
ip subnet-zero
!
ip dhcp excluded-address 10.0.0.1

!--- The DHCP pool does not lease this address; it is used by interface E0.

!
ip dhcp pool
<pool name>

network 10.0.0.0 255.0.0.0
default-router 10.0.0.1

!--- Default gateway is assigned to local devices.

!
interface Ethernet0
 ip address 10.0.0.1 255.0.0.0
 no ip directed-broadcast
 ip nat inside
 no ip mroute-cache
!
interface ATM0
 no ip address
 no ip directed-broadcast
 no ip mroute-cache
 no atm ilmi-keepalive
 pvc 1/150
  encapsulation aal5mux ppp dialer
  dialer pool-member 1
!
hold-queue 224 in
!
interface Dialer0
 ip address 172.18.0.1 255.255.0.0
 ip nat outside
 no ip directed-broadcast
 encapsulation ppp
 dialer pool 1
 dialer-group 2
 ppp pap sent-username <username> password <password>
!
ip nat inside source list 1 interface Dialer0 overload
ip classless
ip route 0.0.0.0 0.0.0.0 Dialer0
no ip http server
!
access-list 1 permit 10.0.0.0 0.255.255.255
dialer-list 2 protocol ip permit
!
end

```

Verify

There is currently no verification procedure available for this configuration.

Troubleshoot

There is currently no specific troubleshooting information available for this configuration.

NetPro Discussion Forums – Featured Conversations

Networking Professionals Connection is a forum for networking professionals to share questions, suggestions, and information about networking solutions, products, and technologies. The featured links are some of the most recent conversations available in this technology.

NetPro Discussion Forums – Featured Conversations for DSL
Network Infrastructure: Remote Access
Service Providers: VPN Service Architectures

Related Information

- [Cisco DSL Technology Support Information](#)
- [Cisco DSL Product Support Information](#)
- [Technical Support – Cisco Systems](#)

All contents are Copyright © 1992–2005 Cisco Systems, Inc. All rights reserved. Important Notices and Privacy Statement.

Updated: Nov 21, 2005

Document ID: 12920
