

Changing the Cisco IP/TV Content Manager Java Web Server Port

Document ID: 12543

- Introduction**
- Before You Begin**
 - Conventions
 - Prerequisites
 - Components Used
- Step-by-Step Instructions**
- Related Information**

Introduction

This document provides the procedure to change the port used by Cisco IP/TV's Content Manager Java web server.

Before You Begin

Conventions

For more information on document conventions, see the Cisco Technical Tips Conventions.

Prerequisites

There are no specific prerequisites for this document.

Components Used

This document is not restricted to specific software and hardware versions.

The information presented in this document was created from devices in a specific lab environment. All of the devices used in this document started with a cleared (default) configuration. If you are working in a live network, ensure that you understand the potential impact of any command before using it.

Step-by-Step Instructions

Perform the steps below to change the Cisco IP/TV Content Manager Java web server port.

1. In your web browser, enter the following location:

`http://<IP address or hostname of Content Manager>:9090`

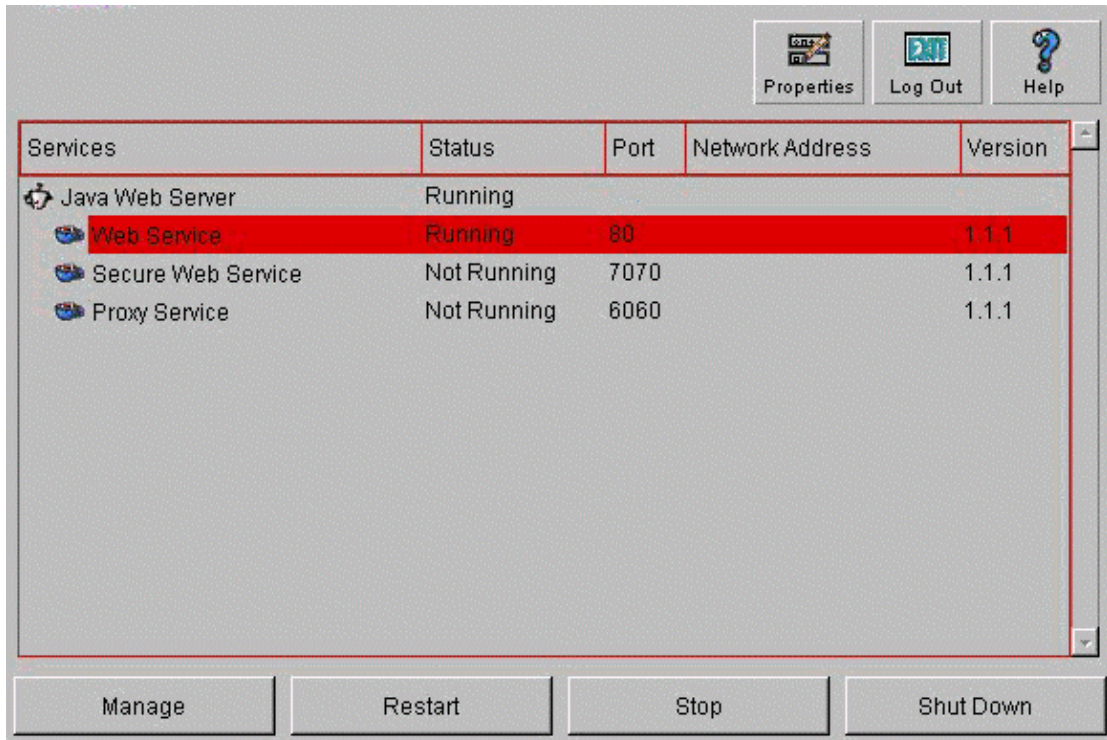
For example, `http://192.0.2.10:9090`.

2. Log in with the following user ID and password:

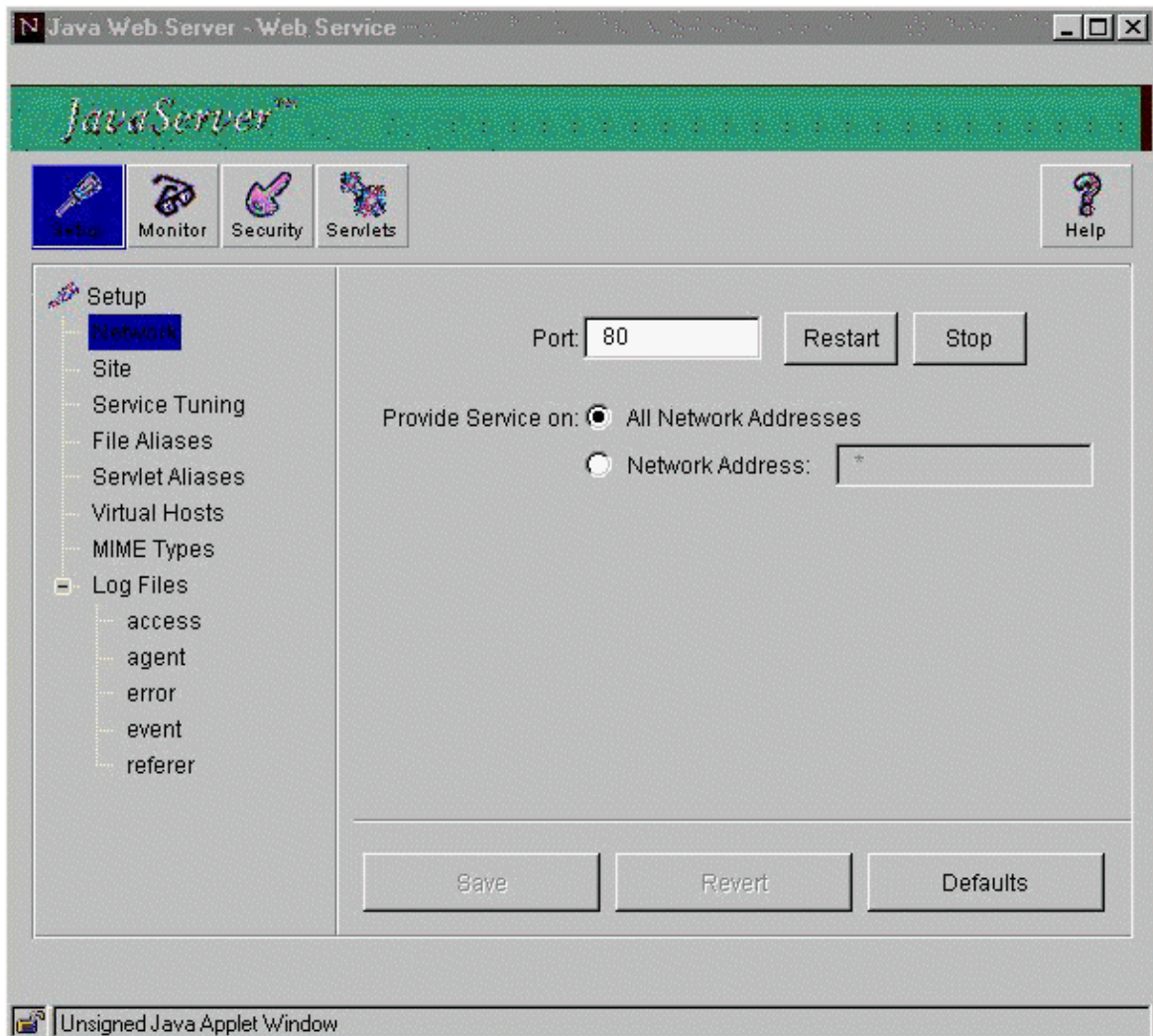
- ◆ User ID: admin

◆ Password: admin

3. Select **Web Service** in the **Content Manager** window, and click the **Manage** button.



4. Select **Network** in the **Content Manager** window. Change the port number field from **80** to the new port number. Click the **Restart** button.



Note: After you complete these procedures, make sure you change all the IP/TV clients and servers to communicate with the Content Manager on the new port number, instead of port 80.

Related Information

- [Cisco IP/TV 3400 Video Servers](#)
- [Technical Support – Cisco Systems](#)

All contents are Copyright © 1992–2006 Cisco Systems, Inc. All rights reserved. Important Notices and Privacy Statement.

Updated: Sep 08, 2006

Document ID: 12543
