

Configuring DLSw Dial-on-Demand over ISDN

Document ID: 12355

Introduction

Before You Begin

Conventions

Prerequisites

Components Used

Configure

Network Diagram

Configurations

Verify

Troubleshoot

Related Information

Introduction

In this document, the dynamic keyword on the Data Link Switching (DLSw) remote-peer statement prevents the peer connection from being brought up automatically. When a circuit tries to connect, Dial-on-Demand Routing (DDR) dialing is initiated and the peer comes up. Turning off keepalives allows the ISDN connection to drop when the line is idle. Two options are available to tear down the peer connections: inactivity (time the connection has been idle), or no-llc (time without any Logical Link Control, type 2 [LLC2] sessions).

Before You Begin

Conventions

For more information on document conventions, see the Cisco Technical Tips Conventions.

Prerequisites

There are no specific prerequisites for this document.

Components Used

The information in this document is based on the software and hardware versions below.

- Cisco IOS® Software release 12.0(7)T.
- Cisco 2504 routers.

The information presented in this document was created from devices in a specific lab environment. All of the devices used in this document started with a cleared (default) configuration. If you are working in a live network, ensure that you understand the potential impact of any command before using it.

Configure

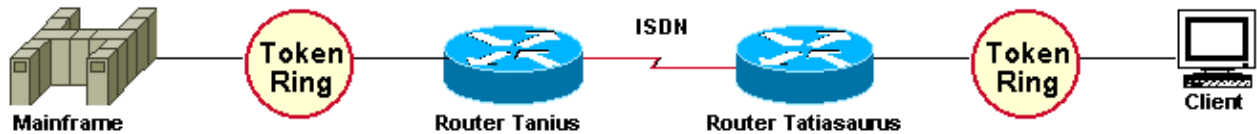
In this section, you are presented with the information to configure the features described in this document.

Note: To find additional information on the commands used in this document, use the Command Lookup

Tool (registered customers only) .

Network Diagram

This document uses the network setup shown in the diagram below.



Configurations

This document uses the configurations shown below.

Note: The dynamic keyword on the DLSw remote-peer statement prevents the peer connection from being brought up automatically.

Tanius
<pre>service timestamps debug uptime service timestamps log uptime no service password-encryption ! hostname tanius ! ! username tatiasaurus password 0 cisco ip subnet-zero isdn switch-type basic-ts013 ! source-bridge ring-group 110 dlsw local-peer peer-id 10.64.3.67 dlsw remote-peer 0 tcp 10.64.3.161 keepalive 0 timeout 90 dynamic ! interface Serial0 no ip address no ip directed-broadcast no ip mroute-cache shutdown ! interface Serial1 no ip address no ip directed-broadcast shutdown ! interface TokenRing0 ip address 10.64.3.67 255.255.255.240 no ip directed-broadcast ring-speed 16 source-bridge 500 1 110 source-bridge spanning ! interface BRI0 no ip address no ip directed-broadcast encapsulation ppp dialer pool-member 1 isdn switch-type basic-ts013</pre>

```

ppp authentication chap
!
interface Dialer1
 ip address 10.64.3.129 255.255.255.240
 no ip directed-broadcast
 encapsulation ppp
 dialer remote-name tatasaurus
 dialer pool 1
 dialer-group 1
 ppp authentication chap
!
ip classless
ip route 10.64.3.160 255.255.255.240 Dialer1
!
access-list 101 permit tcp any eq 2065 any
access-list 101 permit tcp any any eq 2065
dialer-list 1 protocol ip list 101
!
line con 0
 transport input none
line aux 0

```

Tatasaurus

```

service timestamps debug uptime
service timestamps log uptime
no service password-encryption
!
hostname tatasaurus
!
!
username tanius password 0 cisco
ip subnet-zero
isdn switch-type basic-ts013
!
source-bridge ring-group 120
dlsw local-peer peer-id 10.64.3.161
dlsw remote-peer 0 tcp 10.64.3.67 keepalive 0 timeout 90 dynamic
!
!
interface Serial0
 no ip address
 no ip directed-broadcast
 no ip mroute-cache
 shutdown
!
interface Serial1
 no ip address
 no ip directed-broadcast
 shutdown
!
interface TokenRing0
 ip address 10.64.3.161 255.255.255.240
 no ip directed-broadcast
 ring-speed 16
 source-bridge 600 1 120
!
interface BRI0
 no ip address
 no ip directed-broadcast
 encapsulation ppp
 dialer pool-member 1
 isdn switch-type basic-ts013
 ppp authentication chap

```

```
!  
interface Dialer1  
  ip address 10.64.3.130 255.255.255.240  
  no ip directed-broadcast  
  encapsulation ppp  
  dialer remote-name tanius  
  dialer string 93551270  
  dialer pool 1  
  dialer-group 1  
  ppp authentication chap  
!  
ip classless  
ip route 10.64.3.64 255.255.255.240 10.64.3.129  
ip route 10.64.3.129 255.255.255.255 Dialer1  
!  
access-list 101 permit tcp any eq 2065 any  
access-list 101 permit tcp any any eq 2065  
dialer-list 1 protocol ip list 101  
  
line con 0  
  transport input none  
line aux 0  
line vty 0 4  
  login  
!  
end  
  
tatasaurus#
```

Verify

There is currently no verification procedure available for this configuration.

Troubleshoot

There is currently no specific troubleshooting information available for this configuration.

Related Information

- [Data Link Switching Support](#)
- [Technical Support – Cisco Systems](#)

[Contacts & Feedback](#) | [Help](#) | [Site Map](#)

© 2008 – 2009 Cisco Systems, Inc. All rights reserved. [Terms & Conditions](#) | [Privacy Statement](#) | [Cookie Policy](#) | [Trademarks of Cisco Systems, Inc.](#)

Updated: Sep 09, 2005

Document ID: 12355
