

Table of Contents

<u>Configuring DLSw with Local and Remote SR/TLB</u>	1
<u>Document ID: 12341</u>	1
<u>Introduction</u>	1
<u>Prerequisites</u>	1
<u>Requirements</u>	1
<u>Components Used</u>	1
<u>Conventions</u>	1
<u>Configure</u>	1
<u>Network Diagram</u>	1
<u>Configurations</u>	2
<u>Verify</u>	3
<u>Troubleshoot</u>	3
<u>NetPro Discussion Forums – Featured Conversations</u>	3
<u>Related Information</u>	3

Configuring DLSw with Local and Remote SR/TLB

Document ID: 12341

Introduction

Prerequisites

- Requirements

- Components Used

- Conventions

Configure

- Network Diagram

- Configurations

Verify

Troubleshoot

[NetPro Discussion Forums – Featured Conversations](#)

Related Information

Introduction

This document provides a sample configuration for data-link switching (DLSw) with local and remote source-route translational bridging (SR/TLB).

Prerequisites

Requirements

There are no specific requirements for this document.

Components Used

This document is not restricted to specific software and hardware versions.

Conventions

Refer to Cisco Technical Tips Conventions for more information on document conventions.

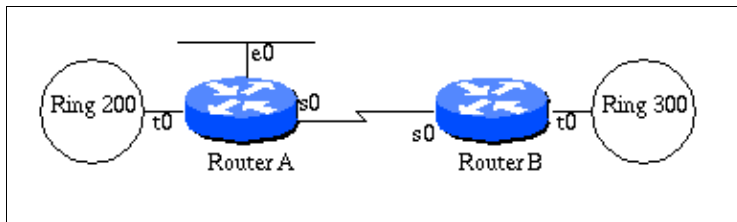
Configure

In this section, you are presented with the information to configure the features described in this document.

Note: Use the Command Lookup Tool (registered customers only) to find more information on the commands used in this document.

Network Diagram

This document uses this network setup:



Configurations

This document uses these configurations:

- Router A
- Router B

```

Router A
hostname RouterA

source-bridge ring-group 31
source-bridge transparent 31 25 1 5
dlsw local-peer peer-id 128.207.2.155
dlsw remote-peer 0 tcp 128.207.1.145
dlsw bridge-group 5

interface Ethernet0
 ip address 128.207.111.1 255.255.255.0
 bridge-group 5

interface Serial0
 ip address 1.1.1.1 255.0.0.0

interface TokenRing0
 ip address 128.207.2.155 255.255.255.0
 ring-speed 16
 source-bridge 200 1 31
 source-bridge spanning

bridge 5 protocol ieee

```

```

Router B
hostname RouterB

source-bridge ring-group 31
dlsw local-peer peer-id 128.207.1.145
dlsw remote-peer 0 tcp 128.207.2.155

interface TokenRing0
 ip address 128.207.1.145
 ring-speed 16
 source-bridge 300 1 31
 source-bridge spanning

interface Serial0
 ip address 1.1.1.2 255.0.0.0

```

Note: A **source-bridge transparent** statement is not needed to make a link between the Ethernet and the virtual ring domain. The **dlsw bridge-group 5** command makes this link.

Note: The **source-bridge transparent 31 25 1 5** statement is needed to accommodate bridging between local interfaces.

Verify

There is currently no verification procedure available for this configuration.

Troubleshoot

There is currently no specific troubleshooting information available for this configuration.

NetPro Discussion Forums – Featured Conversations

Networking Professionals Connection is a forum for networking professionals to share questions, suggestions, and information about networking solutions, products, and technologies. The featured links are some of the most recent conversations available in this technology.

NetPro Discussion Forums – Featured Conversations for IBM
Network Infrastructure: Enterprise Data Centers

Related Information

- [Troubleshooting DLSw](#)
- [DLSw Support Page](#)
- [Technical Support & Documentation – Cisco Systems](#)

All contents are Copyright © 1992–2006 Cisco Systems, Inc. All rights reserved. Important Notices and Privacy Statement.

Updated: Jun 02, 2006

Document ID: 12341
