

# Configuring Two Hosts Using Direct PUs and LUs Configured for Printing

Document ID: 12312

---

## Introduction

### Prerequisites

Requirements

Components Used

Conventions

### Configurations

Logical View

IOCP

VM/VTAM XCA Major Node

VM/VTAM Switched Major Node

MVS/VTAM XCA Major Node

MVS/VTAM Switched Major Node

MVS/VTAM LUGROUP Major Node

Router Configuration

### Verify

### Troubleshoot

### Related Information

---

## Introduction

This document explains how to configure two hosts with direct physical units (PU) and logical units (LU) configured for printing.

## Prerequisites

### Requirements

There are no specific requirements for this document.

### Components Used

The information in this document is based on the software and hardware versions:

- Virtual Telecommunications Access Method (VTAM) 4.2/4.3
- VTAM 3.4.1

The information in this document was created from the devices in a specific lab environment. All of the devices used in this document started with a cleared (default) configuration. If your network is live, make sure that you understand the potential impact of any command.

### Conventions

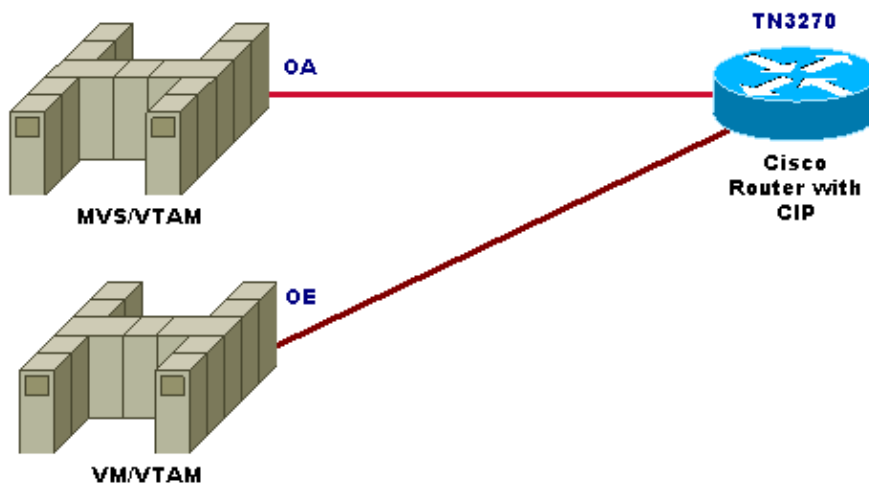
For more information on document conventions, see the Cisco Technical Tips Conventions.

# Configurations

In this section, you are presented with the information to configure the features described in this document.

**Note:** To find additional information on the commands used in this document, use the Command Lookup Tool (registered customers only) .

## Logical View



In this configuration, there are two hosts: an Multiple Virtual Storage/(MVS/VTAM) host running VTAM 4.2/4.3, and a Virtual Media/VTAM (VM/VTAM) host running 3.4.1. The VM users want to get a different initial screen than the MVS users.

## IOCP

### CHPID 0A is used in MVS VTAM

```
*
CHPID PATH=((0A)),TYPE=BL
CNTLUNIT CUNUMBR=0580,PATH=(0A),UNITADD=((60,16)),UNIT=3088,      X
        PROTOCOL=S4
IODEVICE ADDRESS=(C60,16),CUNUMBR=(0580),UNIT=CTC
*
```

### CHPID 0E is used in VM VTAM

```
*
*
CHPID PATH=((0E)),TYPE=BL
CNTLUNIT CUNUMBR=05C0,PATH=(0E),UNITADD=((60,16)),UNIT=3088,      X
        PROTOCOL=S4
IODEVICE ADDRESS=(C60,16),CUNUMBR=(05C0),UNIT=CTC
```

## VM/VTAM XCA Major Node

```
XCA37      VBUILD TYPE=XCA
*
Q60        PORT  CUADDR=C60,      X
           MEDIUM=RING,         X
           ADAPNO=1,             X
```

```

SAPADDR=04 ,
TIMER=60
X
*
G37C60 GROUP DIAL=YES , ISTATUS=ACTIVE , ANSWER=ON , CALL=INOUT
L37C6000 LINE
C37C6000 PU
L37C6001 LINE
C37C6001 PU
L37C6002 LINE
C37C6002 PU
L37C6003 LINE
C37C6003 PU
L37C6004 LINE
C37C6004 PU
L37C6005 LINE
C37C6005 PU
L37C6006 LINE
C37C6006 PU
L37C6007 LINE
C37C6007 PU

```

## VM/VTAM Switched Major Node

```

H37CISCO VBUILD TYPE=SWNET
*
C37EA PU ADDR=04 ,
IDBLK=05D ,
IDNUM=22222 ,
DISCNT=NO ,
DLOGMOD=T3180 ,
LOGAPPL=TPX ,
MAXDATA=521 ,
MODETAB=MTS3270 ,
MAXPATH=1 ,
MAXOUT=7 ,
PUTYPE=2 ,
PASSLIM=7 ,
PACING=7 ,
USSTAB=USSSNA
*
STATOPT=' CISCO 7500 ' *
P37EA0C LU LOCADDR=12 , LOGAPPL= , USSTAB=USSPRINT , MODETAB=PRTMODE ,
DLOGMOD=SCS , PACING=2 , VPACING=2 -
P37EA0D LU LOCADDR=13 , LOGAPPL= , USSTAB=USSPRINT , MODETAB=PRTMODE ,
DLOGMOD=SCS , PACING=2 , VPACING=2 -
P37EA0E LU LOCADDR=14 , LOGAPPL= , USSTAB=USSPRINT , MODETAB=PRTMODE ,
DLOGMOD=SCS , PACING=2 , VPACING=2 -
P37EA0F LU LOCADDR=15 , LOGAPPL= , USSTAB=USSPRINT , MODETAB=PRTMODE ,
DLOGMOD=SCS , PACING=2 , VPACING=2 -

```

**Note:** No Dynamic Definition of Dependent Logical Unit (DDDLU) is configured on this switched network (SWNET) Major Node. The direct LUs are configured for printing purposes.

## MVS/VTAM XCA Major Node

```

XCA01 VBUILD TYPE=XCA
*
Q60 PORT CUADDR=C60 ,
MEDIUM=RING ,
ADAPNO=0 ,
SAPADDR=04 ,
TIMER=60
X
X
X
X
*
G01C60 GROUP DIAL=YES , ISTATUS=ACTIVE , ANSWER=ON , CALL=INOUT
L01C6000 LINE

```

C01C6000 PU  
 L01C6001 LINE  
 C01C6001 PU  
 L01C6002 LINE  
 C01C6002 PU  
 L01C6003 LINE  
 C01C6003 PU  
 L01C6004 LINE  
 C01C6004 PU  
 L01C6005 LINE  
 C01C6005 PU  
 L01C6006 LINE  
 C01C6006 PU  
 L01C6007 LINE  
 C01C6007 PU

## MVS/VTAM Switched Major Node

H01CISCO	VBUILD	TYPE=SWNET,		X
		MAXDLUR=10		
*				
C01EA	PU	ADDR=04,		X
		IDBLK=05D,		X
		IDNUM=11111,		X
		DISCNT=NO,		X
		DLOGMOD=T3180,		X
		LOGAPPL=TPX,		X
		LUGROUP=LUG01,		X
		LUSEED=T01EA##,		X
		MAXDATA=521,		X
		MODETAB=MTS3270,		X
		MAXPATH=1,		X
		MAXOUT=7,		X
		PUTYPE=2,		X
		PASSLIM=7,		X
		PACING=7,		X
		USSTAB=USSSNA		
*		STATOPT='CISCO 7500'		
*				
P01EA0C	LU	LOCADDR=12, LOGAPPL=, USSTAB=USSPRINT, MODETAB=PRTMODE,		-
		DLOGMOD=SCS, PACING=2, VPACING=2		
P01EA0D	LU	LOCADDR=13, LOGAPPL=, USSTAB=USSPRINT, MODETAB=PRTMODE,		-
		DLOGMOD=SCS, PACING=2, VPACING=2		
P01EA0E	LU	LOCADDR=14, LOGAPPL=, USSTAB=USSPRINT, MODETAB=PRTMODE,		-
		DLOGMOD=SCS, PACING=2, VPACING=2		
P01EA0F	LU	LOCADDR=15, LOGAPPL=, USSTAB=USSPRINT, MODETAB=PRTMODE,		-
		DLOGMOD=SCS, PACING=2, VPACING=2		
P01EA10	LU	LOCADDR=16, LOGAPPL=, USSTAB=USSPRINT, MODETAB=PRTMODE,		-
		DLOGMOD=SCS, PACING=2, VPACING=2		
P01EA11	LU	LOCADDR=17, LOGAPPL=, USSTAB=USSPRINT, MODETAB=PRTMODE,		-
		DLOGMOD=SCS, PACING=2, VPACING=2		
P01EA12	LU	LOCADDR=18, LOGAPPL=, USSTAB=USSPRINT, MODETAB=PRTMODE,		-
		DLOGMOD=SCS, PACING=2, VPACING=2		
P01EA13	LU	LOCADDR=19, LOGAPPL=, USSTAB=USSPRINT, MODETAB=PRTMODE,		-
		DLOGMOD=SCS, PACING=2, VPACING=2		
P01EA14	LU	LOCADDR=20, LOGAPPL=, USSTAB=USSPRINT, MODETAB=PRTMODE,		-
		DLOGMOD=SCS, PACING=2, VPACING=2		
P01EA15	LU	LOCADDR=21, LOGAPPL=, USSTAB=USSPRINT, MODETAB=PRTMODE,		-
		DLOGMOD=SCS, PACING=2, VPACING=2		

## MVS/VTAM LUGROUP Major Node

LUGRP01 VBUILD TYPE=LUGROUP  
 LUG01 LUGROUP

```

@          LU      MODETAB=MTS3270,          +
          DLOGMOD=T3180,                    +
          LOGAPPL=TPXI,                     +
          USSTAB=USSSNA,                    +
          SSCPFM=USS3270

```

## Router Configuration

```

version 11.0
!
hostname Celebes
source-bridge ring-group 2
source-bridge transparent 2 3 1 1
!
!
interface Ethernet1/0
 ip address 172.16.0.9 255.255.0.0 secondary
 ip address 199.88.1.9 255.255.255.0
 bridge-group 1
!
interface Channel4/0
 ip address 192.168.250.49 255.255.255.240
 no keepalive
 channel-protocol S4
 offload 0100 62 192.168.250.50 HOSTTCP CIPTCP TCPIP TCPIP TCPIP API
 csna 0100 60
!
interface Channel4/1
 ip address 192.168.250.65 255.255.255.240
 no keepalive
 channel-protocol S4
 offload 0100 62 192.168.250.66 TCPIP CIPTCP TCPIP TCPIP TCPIP API
 csna 0100 60
!
interface Channel4/2
 ip address 192.168.250.81 255.255.255.240
 no keepalive
 lan TokenRing 0
 source-bridge 1 1 2
 adapter 0 4000.3745.5a5a
 adapter 1 4000.3745.5b5b
 tn3270-server
 idle-time 1800
 unbind-action keep
 pu C01EA 05D11111 192.168.250.82 token-adapter 0 70 lu-seed T01EA##
 pu C37EA 05D22222 192.168.250.83 token-adapter 1 74 lu-seed T37EA##
!
router ospf 109
 redistribute connected subnets
 redistribute static subnets
 passive-interface Channel4/0
 passive-interface Channel4/1
 passive-interface Channel4/2
 network 172.16.0.0 0.0.255.255 area 0
 network 199.88.1.0 0.0.0.255 area 0
 default-metric 2
!
ip route 192.168.250.16 255.255.255.240 172.16.0.12
ip route 192.168.250.32 255.255.255.240 172.16.0.12
!
logging buffered 50000
!
bridge 1 protocol ieee
!

```

# Verify

This section provides information you can use to confirm your configuration is working properly.

Certain **show** commands are supported by the Output Interpreter Tool ( registered customers only) , which allows you to view an analysis of **show** command output.

These versions of the **show extended channel tn3270-server** command can be used to verify and troubleshoot the TN3270 configuration:

- **show extended channel 4/2 tn3270-server** Displays the current server configuration parameters and the status of the PUs.
- **show extended channel 4/2 tn3270-server pu <pu name>** Displays information about the client LUs associated with a specified PU. For example:

```
show extended channel 4/2 tn3270-server pu C37EA
```

- **show extended channel 4/2 tn3270-server pu <puname> lu <locaddr>** Displays the status of the LU. For example:

```
show extended channel 4/2 tn3270-server pu C37EA lu3
```

- **show extended channel 4/2 tn3270-server pu <puname> lu <locaddr> history** Displays the status of the LU.

## Troubleshoot

There is currently no specific troubleshooting information available for this configuration.

---

## Related Information

- [Technology Support](#)
  - [Product Support](#)
  - [Technical Support – Cisco Systems](#)
- 

[Contacts & Feedback](#) | [Help](#) | [Site Map](#)

© 2008 – 2009 Cisco Systems, Inc. All rights reserved. [Terms & Conditions](#) | [Privacy Statement](#) | [Cookie Policy](#) | [Trademarks of Cisco Systems, Inc.](#)

---

Updated: Sep 09, 2005

Document ID: 12312

---