

# Configuring QLLC to SDLC via DLSw/TCP Encapsulation

Document ID: 12302

---

## Introduction

### Prerequisites

- Requirements

- Components Used

- Conventions

### Configure

- Network Diagram

- Configurations

### Verify

### Troubleshoot

[NetPro Discussion Forums – Featured Conversations](#)

### Related Information

---

## Introduction

This sample configuration demonstrates Qualified Logical Link Control (QLLC) to Synchronous Data Link Control (SDLC) via data-link switching (DLSw).

## Prerequisites

### Requirements

There are no specific requirements for this document.

### Components Used

This document is not restricted to specific software and hardware versions.

The information in this document was created from the devices in a specific lab environment. All of the devices used in this document started with a cleared (default) configuration. If your network is live, make sure that you understand the potential impact of any command.

### Conventions

Refer to Cisco Technical Tips Conventions for more information on document conventions.

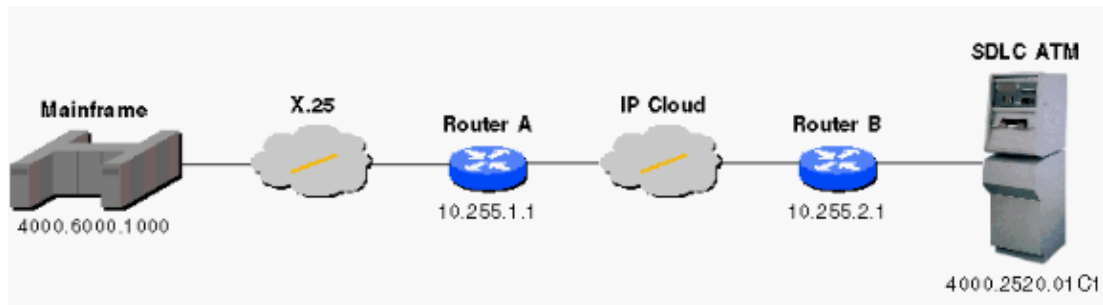
## Configure

In this section, you are presented with the information to configure the features described in this document.

**Note:** Use the Command Lookup Tool ([registered customers only](#)) to find more information on the commands used in this document.

## Network Diagram

This document uses this network setup:



## Configurations

This document uses these configurations:

```
Router B
source-bridge ring-group 100
dlsw local-peer peer-id 10.255.2.1
dlsw remote-peer 0 tcp 10.255.1.1
!
interface Loopback0
ip address 10.255.2.1 255.255.255.0
!
interface Serial2
no ip address
encapsulation sdhc
bandwidth 4800
no keepalive
clockrate 4800
sdhc role primary
sdhc vmac 4000.2520.0100
sdhc address C1
sdhc xid C1 0C112345
sdhc partner 4000.6000.1000 C1
sdhc dlsw C1
```

```
Router A
!
source-bridge ring-group 100
dlsw local-peer peer-id 10.255.1.1
dlsw remote-peer 0 tcp 10.255.2.1
!
interface Loopback0
ip address 10.255.1.1 255.255.255.0
!
interface Serial2
no ip address
encapsulation x25 dce ietf
no ip mroute-cache
x25 address 60002000
x25 htc 100
x25 suppress-called-address
x25 suppress-calling-address
x25 map qllc 4000.6000.1000 60001000
clockrate 56000
qllc dlsw subaddress 031847 vmacaddr 4000.6000.1000 partner 4000.2520.01C1
```

!

## Verify

There is currently no verification procedure available for this configuration.

## Troubleshoot

There is currently no specific troubleshooting information available for this configuration.

## NetPro Discussion Forums – Featured Conversations

Networking Professionals Connection is a forum for networking professionals to share questions, suggestions, and information about networking solutions, products, and technologies. The featured links are some of the most recent conversations available in this technology.

|                                                           |
|-----------------------------------------------------------|
| NetPro Discussion Forums – Featured Conversations for IBM |
| Network Infrastructure: Enterprise Data Centers           |

---

## Related Information

- [Technical Support & Documentation – Cisco Systems](#)
- 

All contents are Copyright © 2006–2007 Cisco Systems, Inc. All rights reserved. Important Notices and Privacy Statement.

---

Updated: Sep 15, 2005

Document ID: 12302

---