

# Configuring SR/TLB Local Switching of Ethernet to QLLC

Document ID: 12300

---

## Introduction

### Prerequisites

Requirements

Components Used

Network Diagram

Conventions

### Configuration

Task

### Verify

### Troubleshoot

### Related Information

---

## Introduction

This document describes how to configure SR/TLB local switching of Ethernet to QLLC.

## Prerequisites

## Requirements

There are no specific requirements for this document.

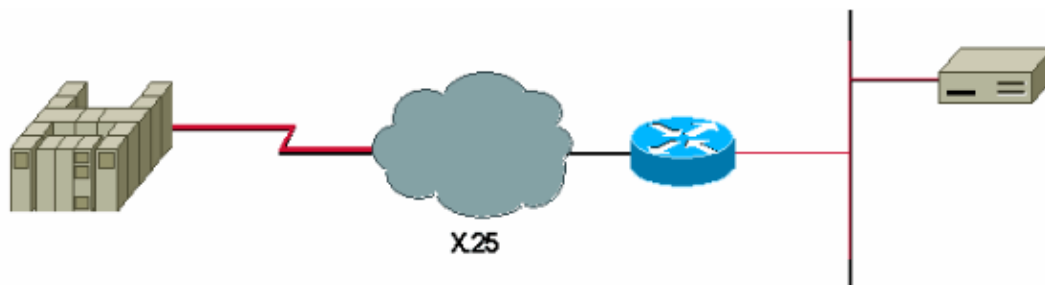
## Components Used

This document is not restricted to specific software and hardware versions.

The information in this document was created from the devices in a specific lab environment. All of the devices used in this document started with a cleared (default) configuration. If your network is live, make sure that you understand the potential impact of any command.

## Network Diagram

This document uses this network setup:



## Conventions

Refer to Cisco Technical Tips Conventions for more information on document conventions.

## Configuration

### Task

In this section, you are presented with the information to configure the features described in this document.

```
source-bridge ring-group 200
source-bridge transparent 200 135 11 9
!
interface Ethernet2/3
ip address 10.203.0.1 255.255.255.0
bridge-group 9
!
interface Serial1/1
encapsulation x25
bandwidth 64
x25 address 80000000000
x25 htc 50
x25 win 7
x25 wout 7
x25 ips 256
x25 ops 256
x25 nvc 8
x25 map qllc 0200.420a.0000 10000007307
qllc srb 0200.420a.0000 1001 200
!
bridge 9 protocol ieee
```

In this configuration, the logical ring-bridge-ring topology is:

```
ring 1001--bridgel--ring 200--bridge11--ring 135
```

Or, in hexadecimal notation, it is:

```
ring 3E9--bridgel--ring C8--bridge B--ring 87
```

The address used on the client must be the bitswapped version of the MAC used in the x25 map qllc configuration command. In this case, the client points to 4000.4250.0000.

## Verify

There is currently no verification procedure available for this configuration.

## Troubleshoot

There is currently no specific troubleshooting information available for this configuration.

---

# Related Information

- **Technical Support & Documentation – Cisco Systems**
- 

[Contacts & Feedback](#) | [Help](#) | [Site Map](#)

© 2009 – 2010 Cisco Systems, Inc. All rights reserved. [Terms & Conditions](#) | [Privacy Statement](#) | [Cookie Policy](#) | [Trademarks of Cisco Systems, Inc.](#)

---

Updated: Sep 15, 2005

Document ID: 12300

---