

# Configuring DLSw+ for Multidrop SDLC With PU 2.1

Document ID: 12299

---

## Introduction

### Prerequisites

- Requirements
- Components Used
- Conventions

### Configure

- Network Diagram
- Configurations

### Verify

### Troubleshoot

NetPro Discussion Forums – Featured Conversations

### Related Information

---

## Introduction

This document shows how to configure Data–Link Switching Plus (DLSw+) for multidrop Synchronous Data Link Control (SDLC) with Physical Unit (PU) 2.1.

## Prerequisites

### Requirements

There are no specific requirements for this document.

### Components Used

The information in this document is based on these software versions:

- Cisco IOS® Software Release 11.0 or later.

The information in this document was created from the devices in a specific lab environment. All of the devices used in this document started with a cleared (default) configuration. If your network is live, make sure that you understand the potential impact of any command.

### Conventions

For more information on document conventions, refer to Cisco Technical Tips Conventions.

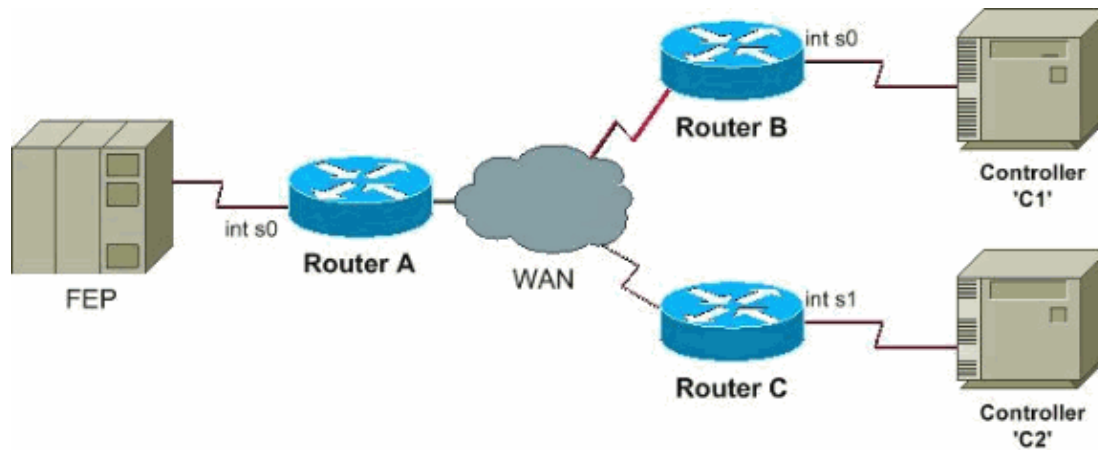
## Configure

In this section, you are presented with the information to configure the features described in this document.

**Note:** To find additional information on the commands used in this document, use the Command Lookup Tool (registered customers only) .

# Network Diagram

This document uses this network setup:



## Configurations

This document uses these configurations:

**Note:** For the connection with multiple PU 2.1 devices, the role is secondary and we tell the individual SDLC addresses to pass the exchange identification (XID) with the keyword "xid-pass".

Router A
<pre>dlsw local-peer peer-id 1.0.0.1 dlsw remote-peer 0 tcp 5.0.0.1 dlsw remote-peer 0 tcp 7.0.0.1  interface Serial0  no ip address  encapsulation sdhc  no ip route-cache  no keepalive  nrzi-encoding  clockrate 56000  sdhc role secondary  sdhc vmac 4000.5555.0000  sdhc address C1 xid-pass  sdhc partner 4000.0693.03C1 C1  sdhc address C2 xid-pass  sdhc partner 4000.0368.03C2 C2  sdhc dlsw C1 C2</pre>
Router B
<pre>dlsw local-peer peer-id 5.0.0.1 dlsw remote-peer 0 tcp 1.0.0.1  interface Serial0  description connection for PU type 2.1  no ip address encapsulation  sdhc no keepalive  nrzi-encoding  clockrate 9600  sdhc role prim-xid-poll  sdhc vmac 4000.0693.0300  sdhc address C1</pre>

```
sdhc partner 4000.5555.00C1 C1
sdhc dlsw C1
```

### Router C

```
dlsw local-peer peer-id 7.0.0.1
dlsw remote-peer 0 tcp 1.0.0.1

interface Serial1
description connection for PU type 2.1
no ip address encapsulation
sdhc no keepalive
nrzi-encoding clockrate 9600
sdhc role prim-xid-poll
sdhc vmac 4000.0368.0300
sdhc address C2 sdhc partner 4000.5555.00C2 C2
sdhc dlsw C2
```

## Verify

There is currently no verification procedure available for this configuration.

## Troubleshoot

There is currently no specific troubleshooting information available for this configuration.

## NetPro Discussion Forums – Featured Conversations

Networking Professionals Connection is a forum for networking professionals to share questions, suggestions, and information about networking solutions, products, and technologies. The featured links are some of the most recent conversations available in this technology.

NetPro Discussion Forums – Featured Conversations for IBM

Network Infrastructure: Enterprise Data Centers

## Related Information

- [Technology Support](#)
- [Product Support](#)
- [Technical Support – Cisco Systems](#)

[Contacts & Feedback](#) | [Help](#) | [Site Map](#)

© 2008 – 2009 Cisco Systems, Inc. All rights reserved. [Terms & Conditions](#) | [Privacy Statement](#) | [Cookie Policy](#) | [Trademarks of Cisco Systems, Inc.](#)

Updated: Sep 09, 2005

Document ID: 12299