

# Table of Contents

<b><u>DLSw+ Local Switching of Reverse SDLLC (PU 2.0)</u></b> .....	<b>1</b>
<u>Document ID: 12296</u> .....	1
<u>Introduction</u> .....	1
<u>Prerequisites</u> .....	1
<u>Requirements</u> .....	1
<u>Components Used</u> .....	1
<u>Conventions</u> .....	1
<u>Configure</u> .....	1
<u>Network Diagram</u> .....	2
<u>Configuration</u> .....	2
<u>Verify</u> .....	2
<u>Troubleshoot</u> .....	2
<u>NetPro Discussion Forums – Featured Conversations</u> .....	2
<u>Related Information</u> .....	3

# DLSw+ Local Switching of Reverse SDLLC (PU 2.0)

Document ID: 12296

---

## Introduction

### Prerequisites

- Requirements

- Components Used

- Conventions

### Configure

- Network Diagram

- Configuration

### Verify

### Troubleshoot

NetPro Discussion Forums – Featured Conversations

### Related Information

---

## Introduction

This document provides a sample configuration for data-link switching (DLSw+) local switching of reverse Synchronous Data Logical Link Control (SDLLC) Physical Unit 2 (PU 2.0).

## Prerequisites

### Requirements

There are no specific requirements for this document.

### Components Used

The information in this document is based on Cisco IOS® software version 11.1, or greater.

The information in this document was created from the devices in a specific lab environment. All of the devices used in this document started with a cleared (default) configuration. If your network is live, make sure that you understand the potential impact of any command.

### Conventions

Refer to Cisco Technical Tips Conventions for more information on document conventions.

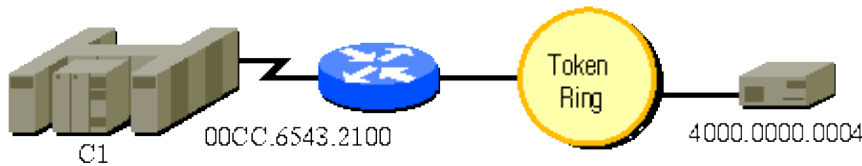
## Configure

In this section, you are presented with the information to configure the features described in this document.

**Note:** Use the Command Lookup Tool ( registered customers only) to find more information on the commands used in this document.

## Network Diagram

This document uses this network setup:



## Configuration

This document uses this configuration:

- DLSw+ local switching of reverse SDLLC (PU 2.0)

Token Ring
<pre>source-bridge ring-group 100 dlsw local-peer  interface Serial2 mtu 4400 no ip address encapsulation sdhc no keepalive clockrate 9600 sdhc role secondary sdhc vmac 00cc.6543.2100 sdhc address C1 sdhc sdhc-largest-frame C1 1033 sdhc xid C1 017000C1 sdhc partner 4000.0000.0004 C1 sdhc dlsw C1  interface TokenRing1 ip address 26.1.3.8 255.255.255.0 no keepalive ring-speed 16 source-bridge 3 2 100 source-bridge spanning</pre>

## Verify

There is currently no verification procedure available for this configuration.

## Troubleshoot

There is currently no specific troubleshooting information available for this configuration.

## NetPro Discussion Forums – Featured Conversations

Networking Professionals Connection is a forum for networking professionals to share questions, suggestions, and information about networking solutions, products, and technologies. The featured links are some of the

Cisco – DLSw+ Local Switching of Reverse SDLLC (PU 2.0)

most recent conversations available in this technology.

NetPro Discussion Forums – Featured Conversations for IBM
---

Network Infrastructure: Enterprise Data Centers
---

---

## Related Information

- [IBM Technologies](#)
  - [Technical Support & Documentation – Cisco Systems](#)
- 

All contents are Copyright © 1992–2006 Cisco Systems, Inc. All rights reserved. Important Notices and Privacy Statement.

---

Updated: Jun 07, 2006

Document ID: 12296

---