

Table of Contents

<u>DLSw+ Local Switching of SDLLC (PU 2.1)</u>	1
<u>Document ID: 12294</u>	1
<u>Introduction</u>	1
<u>Prerequisites</u>	1
<u>Requirements</u>	1
<u>Components Used</u>	1
<u>Conventions</u>	1
<u>Configure</u>	1
<u>Network Diagram</u>	2
<u>Configurations</u>	2
<u>Verify</u>	2
<u>Troubleshoot</u>	2
<u>NetPro Discussion Forums – Featured Conversations</u>	3
<u>Related Information</u>	3

DLSw+ Local Switching of SDLLC (PU 2.1)

Document ID: 12294

Introduction

Prerequisites

Requirements

Components Used

Conventions

Configure

Network Diagram

Configurations

Verify

Troubleshoot

NetPro Discussion Forums – Featured Conversations

Related Information

Introduction

This document provides a sample configuration for Data–Link Switching Plus (DLSw+) local switching of Synchronous Data Logical Link Control (SDLLC) Physical Unit type 2.1 (PU 2.1). This configuration uses a single router to send Systems Network Architecture (SNA) or Synchronous Data Link Control (SDLC) data to an LLC attached host.

Prerequisites

Requirements

There are no specific requirements for this document.

Components Used

The information in this document is based on these software and hardware versions:

- Cisco IOS® Software Release 11.1, and later

The information in this document was created from the devices in a specific lab environment. All of the devices used in this document started with a cleared (default) configuration. If your network is live, make sure that you understand the potential impact of any command.

Conventions

Refer to Cisco Technical Tips Conventions for more information on document conventions.

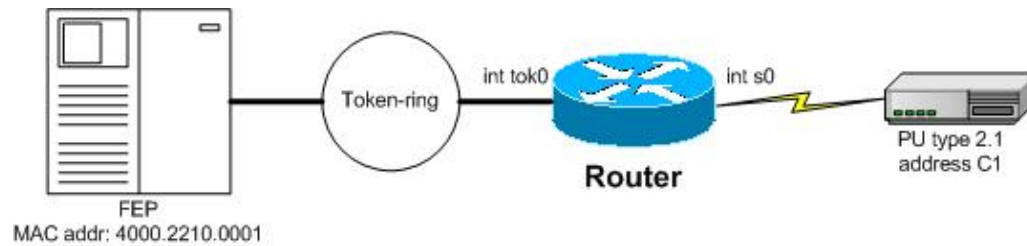
Configure

In this section, you are presented with the information to configure the features described in this document.

Note: Use the Command Lookup Tool (registered customers only) to find more information on the commands used in this document.

Network Diagram

This document uses this network setup:



Configurations

This document uses this configuration:

- DLSw+ Local Switching of SDLLC (PU 2.1)

DLSw+ Local Switching of SDLLC (PU 2.1)
<pre>source-bridge ring-group 999 dlsw local-peer interface TokenRing0 ip address 10.2.1.222 255.255.255.0 ring-speed 16 source-bridge 100 1 999 source-bridge spanning interface Serial0 description Line SDLC PU 2.1 no ip address encapsulation sdlc no keepalive sdlc role prim-xid-poll sdlc vmac 4000.3174.0000 sdlc poll-pause-timer 200 sdlc address C1 sdlc partner 4000.2210.0001 C1 sdlc line-speed 19200 sdlc dlsw C1</pre>

Verify

There is currently no verification procedure available for this configuration.

Troubleshoot

There is currently no specific troubleshooting information available for this configuration.

NetPro Discussion Forums – Featured Conversations

Networking Professionals Connection is a forum for networking professionals to share questions, suggestions, and information about networking solutions, products, and technologies. The featured links are some of the most recent conversations available in this technology.

NetPro Discussion Forums – Featured Conversations for IBM

Network Infrastructure: Enterprise Data Centers

Related Information

- [IBM Technologies Support Page](#)
- [Technical Support & Documentation – Cisco Systems](#)

All contents are Copyright © 1992–2006 Cisco Systems, Inc. All rights reserved. Important Notices and Privacy Statement.

Updated: Jun 06, 2006

Document ID: 12294
