

# Table of Contents

<b><u>SDLLC with DLSw+ for Token Ring</u></b> .....	<b>1</b>
<u>Document ID: 12289</u> .....	1
<u>Introduction</u> .....	1
<u>Prerequisites</u> .....	1
<u>Requirements</u> .....	1
<u>Components Used</u> .....	1
<u>Conventions</u> .....	1
<u>Configure</u> .....	1
<u>Network Diagram</u> .....	2
<u>Configurations</u> .....	2
<u>Verify</u> .....	3
<u>Troubleshoot</u> .....	3
<u>NetPro Discussion Forums – Featured Conversations</u> .....	3
<u>Related Information</u> .....	3

# SDLLC with DLSw+ for Token Ring

Document ID: 12289

---

## Introduction

### Prerequisites

- Requirements

- Components Used

- Conventions

### Configure

- Network Diagram

- Configurations

### Verify

### Troubleshoot

[NetPro Discussion Forums – Featured Conversations](#)

### Related Information

---

## Introduction

This document provides a sample configuration for Synchronous Data Logical Link Control (SDLLC) with data-link switching plus (DLSw+) for Token Ring.

## Prerequisites

### Requirements

There are no specific requirements for this document.

### Components Used

The information in this document is based on Cisco IOS® Software Release 10.3 or later.

The information in this document was created from the devices in a specific lab environment. All of the devices used in this document started with a cleared (default) configuration. If your network is live, make sure that you understand the potential impact of any command.

### Conventions

Refer to Cisco Technical Tips Conventions for more information on document conventions.

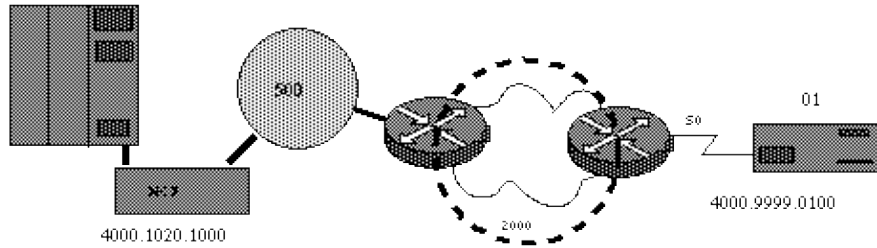
## Configure

In this section, you are presented with the information to configure the features described in this document.

**Note:** Use the Command Lookup Tool ( registered customers only) to find more information on the commands used in this document.

## Network Diagram

This document uses this network setup:



## Configurations

This document uses these configurations:

- Router A
- Router B

Router A
<pre>source-bridge ring-group 2000 dlsw local-peer peer-id 150.150.10.2 dlsw remote-peer 0 tcp 150.150.10.1 interface TokenRing 0 ip address 150.150.10.2 255.255.255.192 source-bridge 500 1 2000 source-bridge spanning</pre>

Router B
<pre>dlsw local-peer peer-id 150.150.10.1 dlsw remote-peer 0 tcp 150.150.10.2  interface Serial 0 encapsulation sdhc clockrate 9600 sdhc role primary sdhc vmac 4000.9999.0100 sdhc address 01 sdhc xid 0105d20006 sdhc partner 4000.1020.1000 01 sdhc dlsw 1  interface loopback 0 ip address 150.150.10.1 255.255.255.192</pre>

**Note:** This configuration works for either a Physical Unit (PU) 2.0 or PU 2.1 Synchronous Data Link Control (SDLC) device. Mixing the PU type is supported in IOS 11.1.

The SDLC controller runs nonreturn to zero (NRZ) encoding, which is the default on the router.

WAN and IP routing configurations are not shown in this document (for simplicity).

Refer to Basic DLSw+ Configurations for more information.

## Verify

There is currently no verification procedure available for this configuration.

## Troubleshoot

There is currently no specific troubleshooting information available for this configuration.

## NetPro Discussion Forums – Featured Conversations

Networking Professionals Connection is a forum for networking professionals to share questions, suggestions, and information about networking solutions, products, and technologies. The featured links are some of the most recent conversations available in this technology.

NetPro Discussion Forums – Featured Conversations for IBM
---

Network Infrastructure: Enterprise Data Centers
---

---

## Related Information

- [Troubleshooting DLSw](#)
- [DLSw Support Page](#)
- [Technical Support & Documentation – Cisco Systems](#)

---

All contents are Copyright © 1992–2006 Cisco Systems, Inc. All rights reserved. Important Notices and Privacy Statement.

---

Updated: Jun 08, 2006

Document ID: 12289

---