

# Configuring QLLC to SDLC Direct

Document ID: 12287

---

## Introduction

### Prerequisites

- Requirements

- Components Used

- Conventions

### Configure

- Network Diagram

- Configurations

### Verify

### Troubleshoot

[NetPro Discussion Forums – Featured Conversations](#)

### Related Information

---

## Introduction

This document provides a sample for the configuration of QLLC to SDLC direct.

## Prerequisites

### Requirements

There are no specific requirements for this document.

### Components Used

This document is not restricted to specific software and hardware versions.

### Conventions

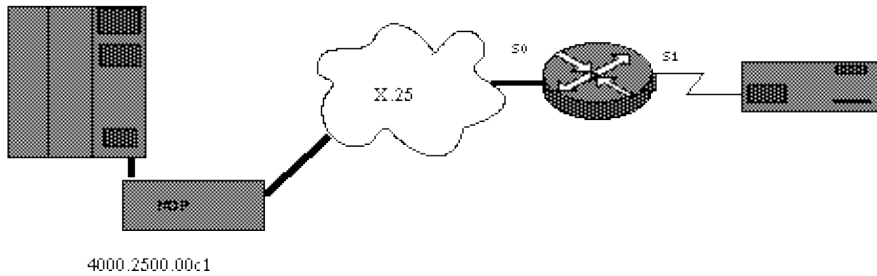
Refer to Cisco Technical Tips Conventions for more information on document conventions.

## Configure

**Note:** Use the Command Lookup Tool (registered customers only) to find more information on the commands used in this document.

### Network Diagram

This document uses this network setup:



## Configurations

This document uses these configurations:

Router Configurations	
<b>Router A</b>	<pre>interface serial 0 encapsulation x25 x25 address 200 x25 ltc 5 x25 htc 16 x25 map qllc 4000.2500.00c1 201 qllc xid 4000.2500.00c1 017F3E59  interface serial 1 no ip address encapsulation sdhc-primary no keepalive sdhc address c1 sdhc qlhc-prtnr 4000.2500.00c1 c1 no sdhc slow-poll</pre>

**Note:** This works for a PU 2.0—only SDLC device. A clock rate setting is needed on serial 1 if the interface acts as DCE. In addition, the duplex and encoding setting must match the setting on the controller.

## Verify

There is currently no verification procedure available for this configuration.

The Output Interpreter Tool (registered customers only) (OIT) supports certain **show** commands. Use the OIT to view an analysis of **show** command output.

## Troubleshoot

There is currently no specific troubleshooting information available for this configuration.

## NetPro Discussion Forums – Featured Conversations

Networking Professionals Connection is a forum for networking professionals to share questions, suggestions, and information about networking solutions, products, and technologies. The featured links are some of the most recent conversations available in this technology.

NetPro Discussion Forums – Featured Conversations for IBM

Network Infrastructure: Enterprise Data Centers

## Related Information

- **Product Support**
  - **Technology Support**
  - **Technical Support & Documentation – Cisco Systems**
- 

All contents are Copyright © 2006–2007 Cisco Systems, Inc. All rights reserved. Important Notices and Privacy Statement.

---

Updated: Sep 09, 2005

Document ID: 12287

---