

ASA/PIX with OSPF Configuration Example

Document ID: 107196

Introduction

Prerequisites

- Requirements
- Components Used
- Related Products
- Conventions

Background Information

Configure

- Network Diagram
- Configurations
- ASDM Configuration
- Configure OSPF Authentication
- Cisco ASA CLI Configuration
- Cisco IOS Router (R2) CLI Configuration
- Cisco IOS Router (R1) CLI Configuration
- Cisco IOS Router (R3) CLI Configuration
- Redistribute into OSPF with ASA

Verify

Troubleshoot

- Troubleshooting Commands

Related Information

Introduction

This document describes how to configure the Cisco ASA to learn routes through Open Shortest Path First (OSPF), perform authentication, and redistribution.

Refer to PIX/ASA 8.X: Configuring EIGRP on the Cisco Adaptive Security Appliance (ASA) for more information on EIGRP configuration.

Note: Asymmetric routing is not supported in ASA/PIX.

Prerequisites

Requirements

Ensure that you meet these requirements before you attempt this configuration:

- Cisco ASA/PIX must run Version 7.x or later.
- OSPF is not supported in multi-context mode; it is supported only in single mode.

Components Used

The information in this document is based on these software and hardware versions:

- Cisco 5500 Series Adaptive Security Appliance (ASA) that runs software version 8.0 and later
- Cisco Adaptive Security Device Manager (ASDM) software version 6.0 and later

The information in this document was created from the devices in a specific lab environment. All of the devices used in this document started with a cleared (default) configuration. If your network is live, make sure that you understand the potential impact of any command.

Related Products

The information in this document is also applicable to the Cisco 500 Series PIX firewall that runs software version 8.0 and later.

Conventions

Refer to the Cisco Technical Tips Conventions for more information on document conventions.

Background Information

OSPF uses a link-state algorithm in order to build and calculate the shortest path to all known destinations. Each router in an OSPF area contains an identical link-state database, which is a list of each of the router usable interfaces and reachable neighbors.

The advantages of OSPF over RIP include:

- OSPF link-state database updates are sent less frequently than RIP updates, and the link-state database is updated instantly rather than gradually as stale information is timed out.
- Routing decisions are based on cost, which is an indication of the overhead required to send packets across a certain interface. The security appliance calculates the cost of an interface based on link bandwidth rather than the number of hops to the destination. The cost can be configured to specify preferred paths.

The disadvantage of shortest path first algorithms is that they require a lot of CPU cycles and memory.

The security appliance can run two processes of OSPF protocol simultaneously, on different sets of interfaces. You might want to run two processes if you have interfaces that use the same IP addresses (NAT allows these interfaces to coexist, but OSPF does not allow overlapping addresses). Or you might want to run one process on the inside, and another on the outside, and redistribute a subset of routes between the two processes. Similarly, you might need to segregate private addresses from public addresses.

You can redistribute routes into an OSPF routing process from another OSPF routing process, a RIP routing process, or from static and connected routes configured on OSPF-enabled interfaces.

The security appliance supports these OSPF features:

- Support of intra-area, interarea, and external (Type I and Type II) routes.
- Support of a virtual link.
- OSPF LSA flooding.
- Authentication to OSPF packets (both password and MD5 authentication).
- Support for configuring the security appliance as a designated router or a designated backup router. The security appliance also can be set up as an ABR. However, the ability to configure the security appliance as an ASBR is limited to default information only (for example, injecting a default route).
- Support for stub areas and not-so-stubby-areas.
- Area boundary router type-3 LSA filtering.

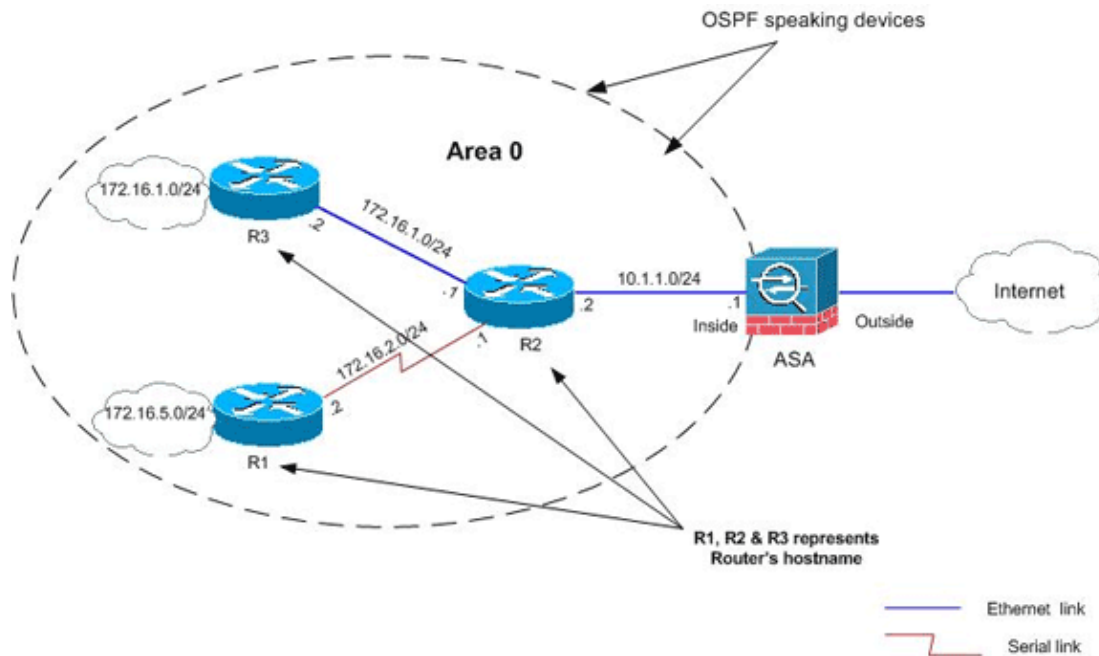
Configure

In this section, you are presented with the information to configure the features described in this document.

Note: Use the Command Lookup Tool (registered customers only) in order to obtain more information on the commands used in this section.

Network Diagram

This document uses this network setup:



In this network topology, the Cisco ASA inside interface IP address is 10.1.1.1/24. The goal is to configure OSPF on the Cisco ASA in order to learn routes to the internal networks (172.16.1.0/24, 172.16.2.0/24, 172.16.5.0/24 and 172.16.10.0/24) dynamically through the adjacent router (R2). R2 learns the routes to remote internal networks through the other two routers (R1 and R3).

Configurations

This document uses these configurations:

- ASDM Configuration
- Configure OSPF Authentication
- Cisco ASA CLI Configuration
- Cisco IOS Router (R2) CLI Configuration
- Cisco IOS Router (R1) CLI Configuration
- Cisco IOS Router (R3) CLI Configuration
- Redistribute into OSPF with ASA

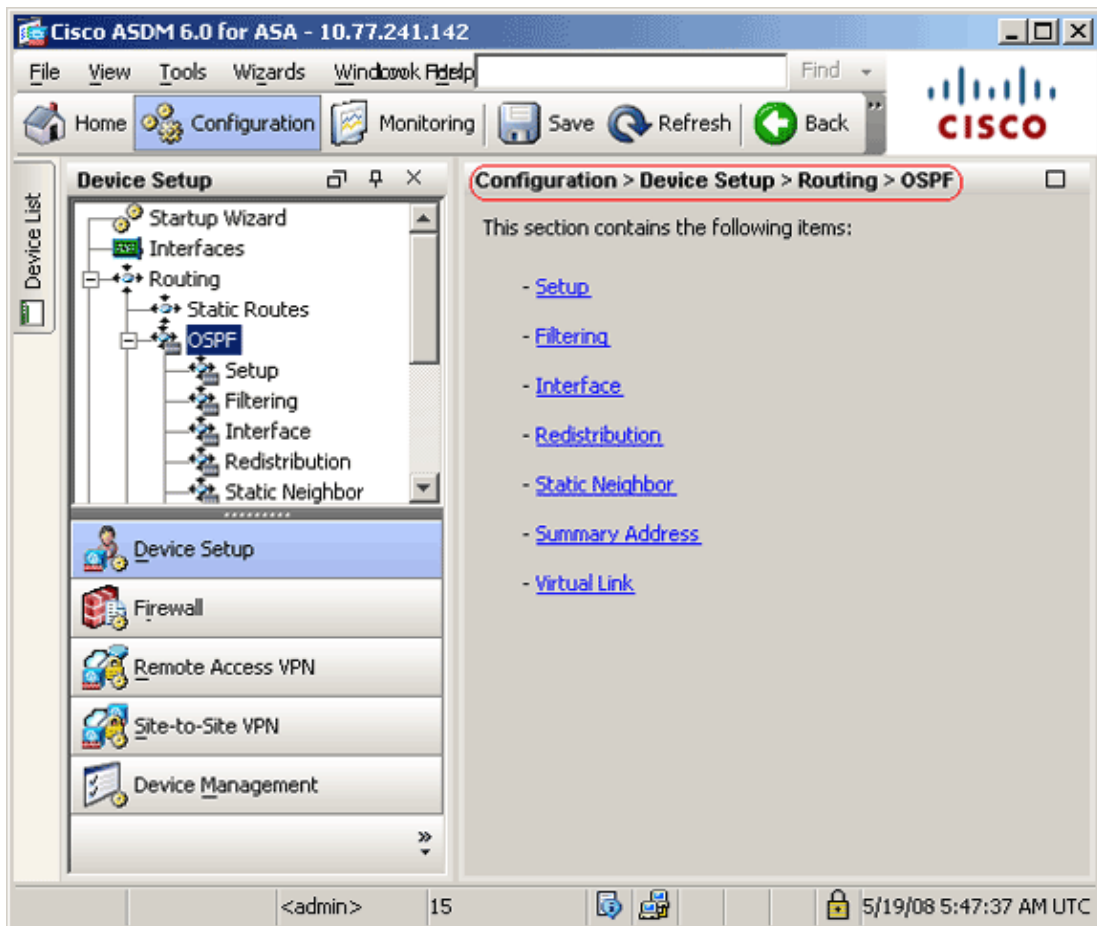
ASDM Configuration

Adaptive Security Device Manager (ASDM) is a browser-based application used to configure and monitor the software on security appliances. ASDM is loaded from the security appliance, and then used to configure, monitor, and manage the device. You can also use the ASDM Launcher (Windows only) in order to launch

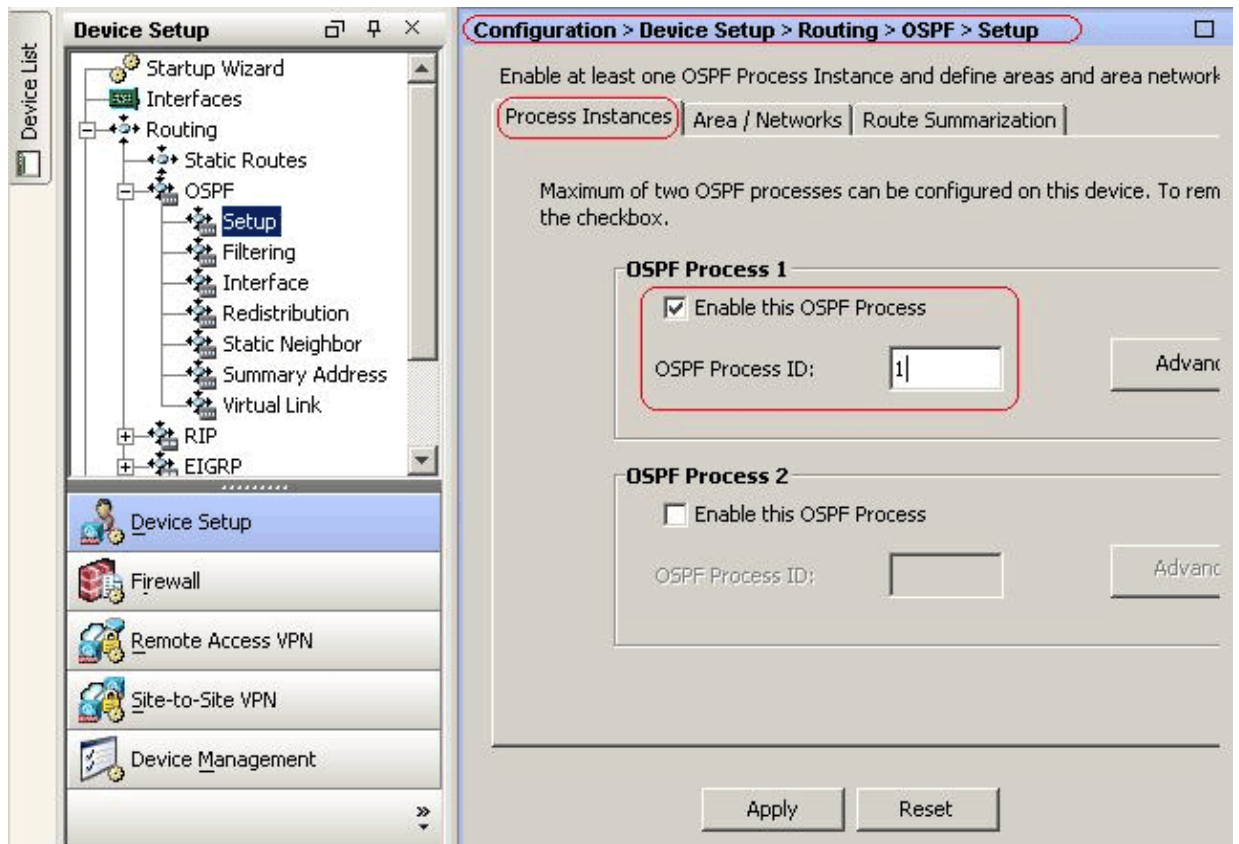
the ASDM application faster than the Java applet. This section describes the information you need to configure the features described in this document with ASDM.

Complete these steps in order to configure OSPF in the Cisco ASA:

1. Log in to the Cisco ASA with ASDM.
2. Navigate to the **Configuration > Device Setup > Routing > OSPF** area of the ASDM interface, as shown in this image.



3. Enable the OSPF routing process on the **Setup > Process Instances** tab, as shown in this image. In this example, the OSPF ID process is **1**.



4. You can click **Advanced** on the **Setup > Process Instances** tab in order to configure optional advanced OSPF routing process parameters. You can edit process-specific settings, such as the Router ID, Adjacency Changes, Administrative Route Distances, Timers, and Default Information Originate settings.

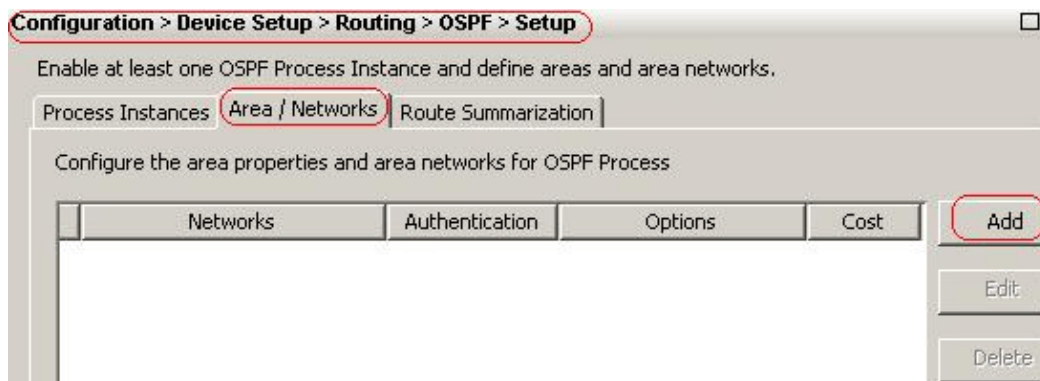
This list describes each field:

- ◆ OSPF Process Displays the OSPF process you are configuring. You cannot change this value.
- ◆ Router ID In order to use a fixed router ID, enter a router ID in IP address format in the Router ID field. If you leave this value blank, the highest-level IP address on the security appliance is used as the router ID.

In this example, the Router ID is statically configured with the IP address of the inside interface (10.1.1.1).

- ◆ Ignore LSA MOSPF Check this check box in order to suppress the sending of system log messages when the security appliance receives type 6 (MOSPF) LSA packets. This setting is unchecked by default.
- ◆ RFC 1583 Compatible Check this check box in order to calculate summary route costs per RFC 1583. Uncheck this check box in order to calculate summary route costs per RFC 2328. In order to minimize the chance of routing loops, all OSPF devices in an OSPF routing domain should have RFC compatibility set identically. This setting is selected by default.
- ◆ Adjacency Changes Contains settings that define the adjacency changes that cause system log messages to be sent.

- ◇ Log Adjacency Changes Check this check box in order to cause the security appliance to send a system log message whenever an OSPF neighbor goes up or down. This setting is selected by default.
 - ◇ Log Adjacency Changes Detail Check this check box in order to cause the security appliance to send a system log message whenever any state change occurs, not just when a neighbor goes up or down. This setting is unchecked by default.
 - ◆ Administrative Route Distances Contains the settings for the administrative distances of routes based on the route type.
 - ◇ Inter Area Sets the administrative distance for all routes from one area to another. Valid values range from 1 to 255. The default value is 100.
 - ◇ Intra Area Sets the administrative distance for all routes within an area. Valid values range from 1 to 255. The default value is 100.
 - ◇ External Sets the administrative distance for all routes from other routing domains that are learned through redistribution. Valid values range from 1 to 255. The default value is 100.
 - ◆ Timers Contains the settings used to configure LSA pacing and SPF calculation timers.
 - ◇ SPF Delay Time Specifies the time between when OSPF receives a topology change and when the SPF calculation starts. Valid values range from 0 to 65535. The default value is 5.
 - ◇ SPF Hold Time Specifies the hold time between consecutive SPF calculations. Valid values range from 1 to 65534. The default value is 10.
 - ◇ LSA Group Pacing Specifies the interval at which LSAs are collected into a group and refreshed, checksummed, or aged. Valid values range from 10 to 1800. The default value is 240.
 - ◆ Default Information Originate Contains the settings used by an ASBR to generate a default external route into an OSPF routing domain.
 - ◇ Enable Default Information Originate Check this check box in order to enable the generation of the default route into the OSPF routing domain.
 - ◇ Always advertise the default route Check this check box in order to always advertise the default route. This option is unchecked by default.
 - ◇ Metric Value Specifies the OSPF default metric. Valid values range from 0 to 16777214. The default value is 1.
 - ◇ Metric Type Specifies the external link type associated with the default route advertised into the OSPF routing domain. Valid values are 1 or 2, indicating a Type 1 or a Type 2 external route. The default value is 2.
 - ◇ Route Map (*Optional*) The name of the route map to apply. The routing process generates the default route if the route map is satisfied.
5. After you complete the previous steps, define the networks and interfaces that participate in OSPF routing on the **Setup > Area/Networks** tab, and then click **Add** as shown in this image:



The Add OSPF Area dialog box appears.

OSPF Process: 1 Area ID: 0

Area Type

Normal

Stub Summary (allows sending LSAs into the stub area)

NSSA Redistribute (imports routes to normal and NSSA areas)

Summary (allows sending LSAs into the NSSA area)

Default Information Originate (generate a Type 7 default)

Metric Value: 1 Metric Type: 2

Area Networks

Enter IP Address and Mask

IP Address: Netmask: 255.255.255.0

Add >> Delete

IP Address	Netmask
10.1.1.0	255.255.255.0

Authentication

None Password MD5

Default Cost: 1

OK Cancel Help

In this example, the only network that is added is the inside network (10.1.1.0/24) since OSPF is enabled only on the inside interface.

Note: Only interfaces with an IP address that fall within the defined networks participate in the OSPF routing process.

6. Click **OK**.

This list describes each field:

- ◆ **OSPF Process** When you add a new area, choose the ID for the OSPF process . If there is only one OSPF process enabled on the security appliance, then that process is selected by default. When you edit an existing area, you cannot change the OSPF process ID.
- ◆ **Area ID** When you add a new area, enter the area ID. You can specify the area ID as either a decimal number or an IP address. Valid decimal values range from 0 to 4294967295. You cannot change the area ID when you edit an existing area.

In this example, Area ID is **0**.

- ◆ **Area Type** Contains the settings for the type of area being configured.

- ◇ Normal Choose this option in order to make the area a standard OSPF area. This option is selected by default when you first create an area.
- ◇ Stub Choose this option in order to make the area a stub area. Stub areas do not have any routers or areas beyond it. Stub areas prevent AS External LSAs (type 5 LSAs) from being flooded into the stub area. When you create a stub area, you can uncheck the Summary check box in order to prevent summary LSAs (type 3 and 4) from being flooded into the area.
- ◇ Summary When the area being defined is a stub area, uncheck this check box in order to prevent LSAs from being sent into the stub area. This check box is selected by default for stub areas.
- ◇ NSSA Choose this option in order to make the area a not-so-stubby area. NSSAs accept type 7 LSAs. When you create an NSSA, you can uncheck the Summary check box in order to prevent summary LSAs from being flooded into the area. In addition, you can uncheck the Redistribute check box and enable Default Information Originate in order to disable route redistribution.
- ◇ Redistribute Uncheck this check box in order to prevent routes from being imported into the NSSA. This check box is selected by default.
- ◇ Summary When the area being defined is an NSSA, uncheck this check box in order to prevent LSAs from being sent into the stub area. This check box is selected by default for NSSAs.
- ◇ Default Information Originate Check this check box in order to generate a type 7 default into the NSSA. This check box is unchecked by default.
- ◇ Metric Value Enter a value in order to specify the OSPF metric value for the default route. Valid values range from 0 to 16777214. The default value is 1.
- ◇ Metric Type Choose a value in order to specify the OSPF metric type for the default route. The choices are 1 (type 1) or 2 (type 2). The default value is 2.
- ◆ Area Networks Contains the settings that define an OSPF area.

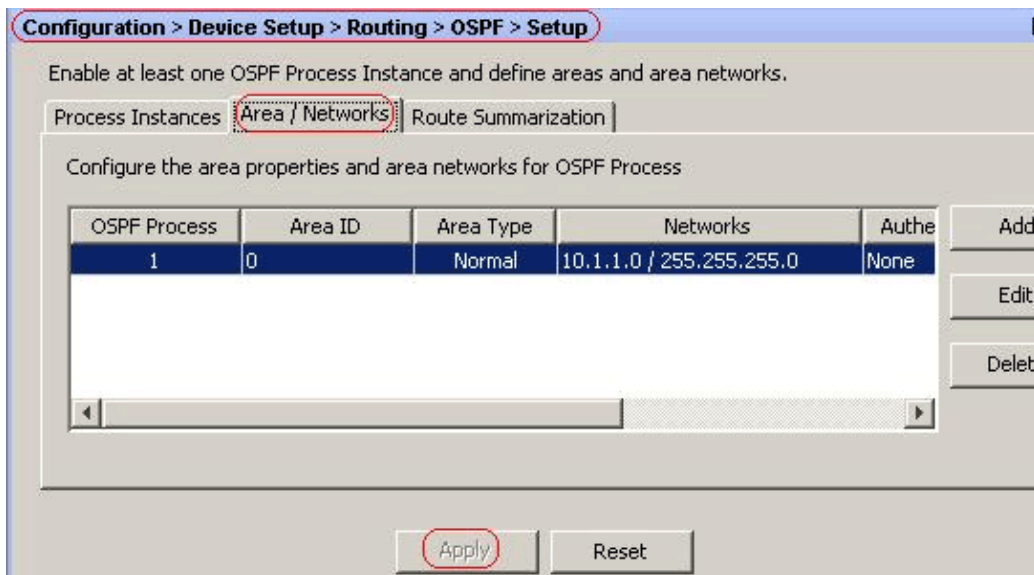
◇ Enter IP Address and Mask Contains the settings used to define the networks in the area.

- IP Address Enter the IP address of the network or host to be added to the area. Use 0.0.0.0 with a netmask of 0.0.0.0 to create the default area. You can use 0.0.0.0 in only one area.
- Netmask Choose the network mask for the IP address or host to be added to the area. If you add a host, choose the 255.255.255.255 mask.

In this example, **10.1.1.0/24** is the network to be configured.

- ◇ Add Adds the network defined in the Enter IP Address and Mask area to the area. The added network appears in the Area Networks table.
- ◇ Delete Deletes the selected network from the Area Networks table.
- ◇ Area Networks Displays the networks defined for the area.
- ◇ IP Address Displays the IP address of the network.
- ◇ Netmask Displays the network mask for the network.
- ◆ Authentication Contains the settings for OSPF area authentication.
 - ◇ None Choose this option in order to disable OSPF area authentication. This is the default setting.
 - ◇ Password Choose this option in order to use a clear text password for area authentication. This option is not recommended where security is a concern.
 - ◇ MD5 Choose this option in order to use MD5 authentication.
- ◆ Default Cost Specify a default cost for the area. Valid values range from 0 to 65535. The default value is 1.

7. Click **Apply**.



8. Optionally, you can define route filters on the Filter Rules pane. Route filtering provides more control over the routes that are allowed to be sent or received in OSPF updates.
9. You can optionally configure route redistribution. The Cisco ASA can redistribute routes discovered by RIP and EIGRP into the OSPF routing process. You can also redistribute static and connected routes into the OSPF routing process. Define route redistribution on the Redistribution pane.
10. OSPF hello packets are sent as multicast packets. If an OSPF neighbor is located across a nonbroadcast network, you must manually define that neighbor. When you manually define an OSPF neighbor, hello packets are sent to that neighbor as unicast messages. In order to define static OSPF neighbors, go to the Static Neighbor pane.
11. Routes learned from other routing protocols can be summarized. The metric used to advertise the summary is the smallest metric of all the more specific routes. Summary routes help reduce the size of the routing table.

Using summary routes for OSPF causes an OSPF ASBR to advertise one external route as an aggregate for all redistributed routes that are covered by the address. Only routes from other routing protocols that are being redistributed into OSPF can be summarized.

12. In the Virtual link pane, you can add an area to an OSPF network, and it is not possible to connect the area directly to the backbone area; you must create a virtual link. A virtual link connects two OSPF devices that have a common area, called the transit area. One of the OSPF devices must be connected to the backbone area.

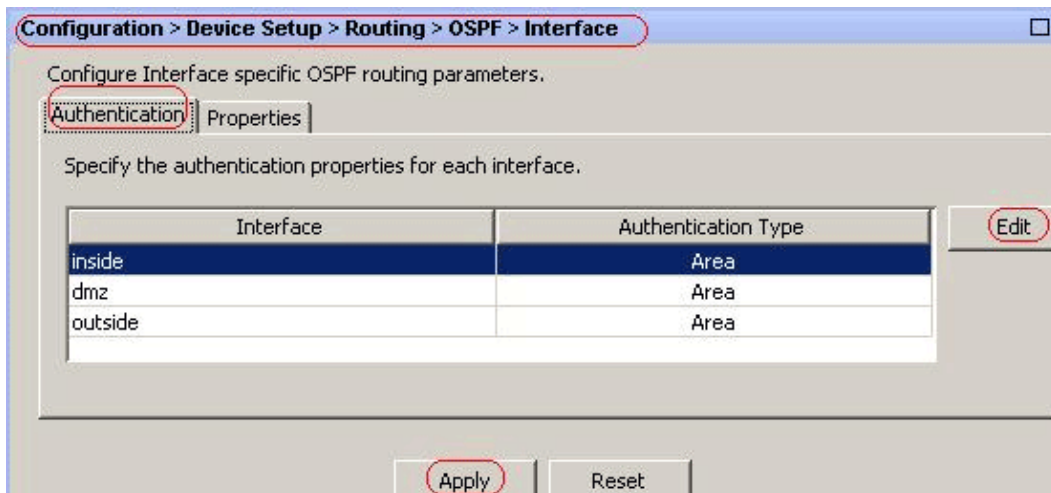
Configure OSPF Authentication

The Cisco ASA supports MD5 authentication of routing updates from the OSPF routing protocol. The MD5 keyed digest in each OSPF packet prevents the introduction of unauthorized or false routing messages from unapproved sources. The addition of authentication to your OSPF messages ensures that your routers and the Cisco ASA only accept routing messages from other routing devices that are configured with the same pre-shared key. Without this authentication configured, if someone introduces another routing device with different or contrary route information onto the network, the routing tables on your routers or Cisco ASA can become corrupt, and a denial of service attack can ensue. When you add authentication to the EIGRP messages sent between your routing devices (which includes the ASA), it prevents the purposeful or accidental addition of another router to the network and any problem.

OSPF route authentication is configured on a per-interface basis. All OSPF neighbors on interfaces configured for OSPF message authentication must be configured with the same authentication mode and key for adjacencies to be established.

Complete these steps in order to enable OSPF MD5 authentication on the Cisco ASA:

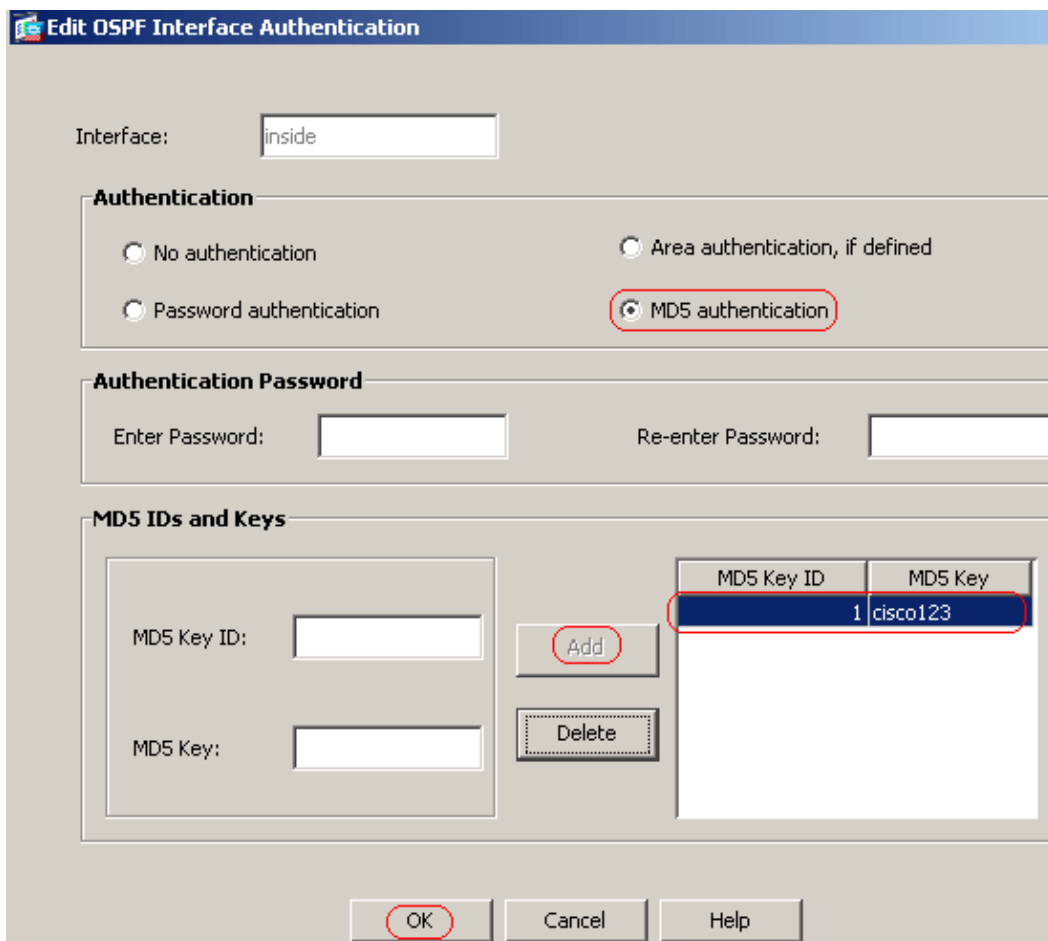
1. On ASDM, navigate to **Configuration > Device Setup > Routing > OSPF > Interface**, and then click **Authentication** tab as shown in this image.



In this case, OSPF is enabled on the inside interface.

2. Choose the **inside** interface, and click **Edit**.
3. Under Authentication, choose **MD5 authentication**, and add more information about authentication parameters here.

In this case, the preshared key is **cisco123**, and the key ID is **1**.



4. Click **OK**, and then click **Apply**.

Configuration > Device Setup > Routing > OSPF > Interface

Configure Interface specific OSPF routing parameters.

Authentication | Properties

Specify the authentication properties for each interface.

Interface	Authentication Type
inside	MD5
dmz	Area
outside	Area

Apply Reset

Cisco ASA CLI Configuration

```
Cisco ASA
ciscoasa#show running-config
: Saved
:
ASA Version 8.0(2)
!
hostname ciscoasa
enable password 8Ry2YjIyt7RRXU24 encrypted
names

!--- Inside interface configuration

interface Ethernet0/1
 nameif inside
 security-level 100
 ip address 10.1.1.1 255.255.255.0
 ospf cost 10

!--- OSPF authentication is configured on the inside interface

ospf message-digest-key 1 md5 <removed>
ospf authentication message-digest
!

!--- Outside interface configuration

interface Ethernet0/2
 nameif outside
 security-level 0
 ip address 192.168.1.2 255.255.255.0
 ospf cost 10
!

!--- Output Suppressed
```

```
icmp unreachable rate-limit 1 burst-size 1
asdm image disk0:/asdm-602.bin
no asdm history enable
arp timeout 14400
!

!--- OSPF Configuration

router ospf 1
 network 10.1.1.0 255.255.255.0 area 0
 log-adj-changes
!

!--- This is the static default gateway configuration in
order to reach Internet

route outside 0.0.0.0 0.0.0.0 192.168.1.1 1

ciscoasa#
```

Cisco IOS Router (R2) CLI Configuration

```
Cisco IOS Router (R2)

!--- Interface that connects to the Cisco ASA.
!--- Notice the OSPF authentication parameters

interface Ethernet0
 ip address 10.1.1.2 255.255.255.0
 ip ospf authentication message-digest
 ip ospf message-digest-key 1 md5 cisco123

!--- Output Suppressed

!--- OSPF Configuration

router ospf 1
 log-adjacency-changes
 network 10.1.1.0 0.0.0.255 area 0
 network 172.16.1.0 0.0.0.255 area 0
 network 172.16.2.0 0.0.0.255 area 0
```

Cisco IOS Router (R1) CLI Configuration

```
Cisco IOS Router (R1)

!--- Output Suppressed

!--- OSPF Configuration
```

```

router ospf 1
 log-adjacency-changes
 network 172.16.5.0 0.0.0.255 area 0
 network 172.16.2.0 0.0.0.255 area 0

```

Cisco IOS Router (R3) CLI Configuration

```

Cisco IOS Router (R3)

!--- Output Suppressed

!--- OSPF Configuration

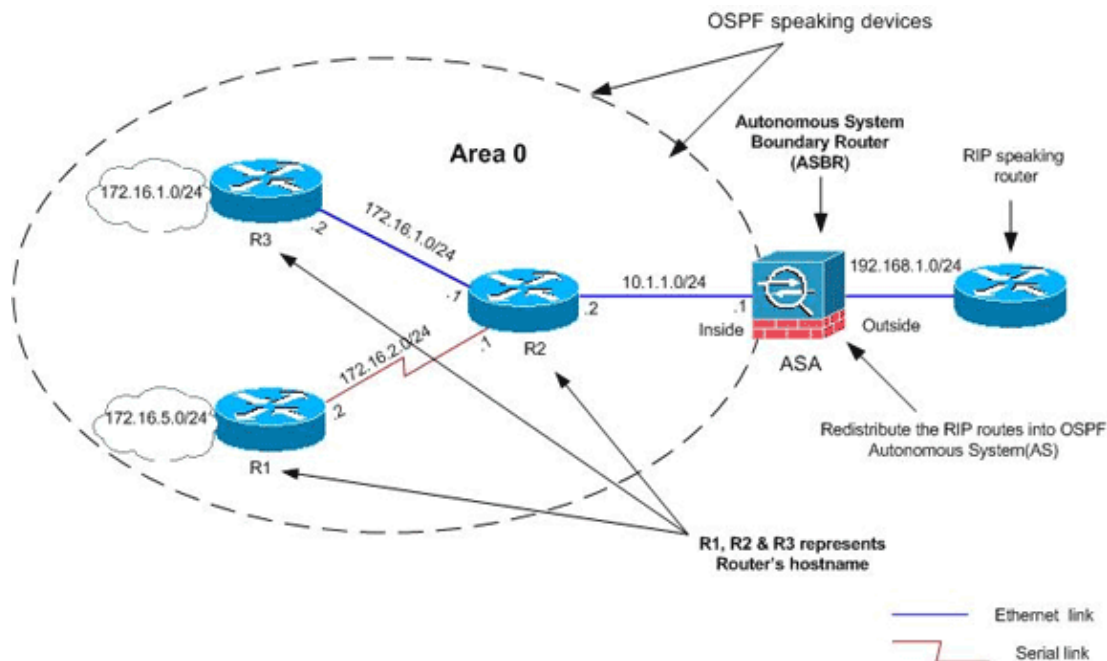
router ospf 1
 log-adjacency-changes
 network 172.16.1.0 0.0.0.255 area 0
 network 172.16.10.0 0.0.0.255 area 0

```

Redistribute into OSPF with ASA

As mentioned earlier, you can redistribute routes into an OSPF routing process from another OSPF routing process, a RIP routing process, or from static and connected routes configured on OSPF-enabled interfaces.

In this example, redistributing the RIP routes into OSPF with the network diagram as shown:



ASDM Configuration

1. Choose **Configuration > Device Setup > Routing > RIP > Setup** in order to enable RIP, and add the network 192.168.1.0 as shown in this image.

Configuration > Device Setup > Routing > RIP > Setup

Configure the global Routing Information Protocol (RIP) parameters. You can configure the setting of the RIP routing process.

Enable RIP routing

Enable auto-summarization

Enable RIP version Version 1 Version 2
 (If global version is not configured then device sends Version 1 and receives Versions 1 & 2.)

Enable default information originate Route Map:

Networks

IP Network to Add:

192.168.1.0

Passive Interfaces

Global passive: Configure all the interfaces as passive globally. This setting will override the individual

Interface	Passive
inside	<input type="checkbox"/>
dmz	<input type="checkbox"/>

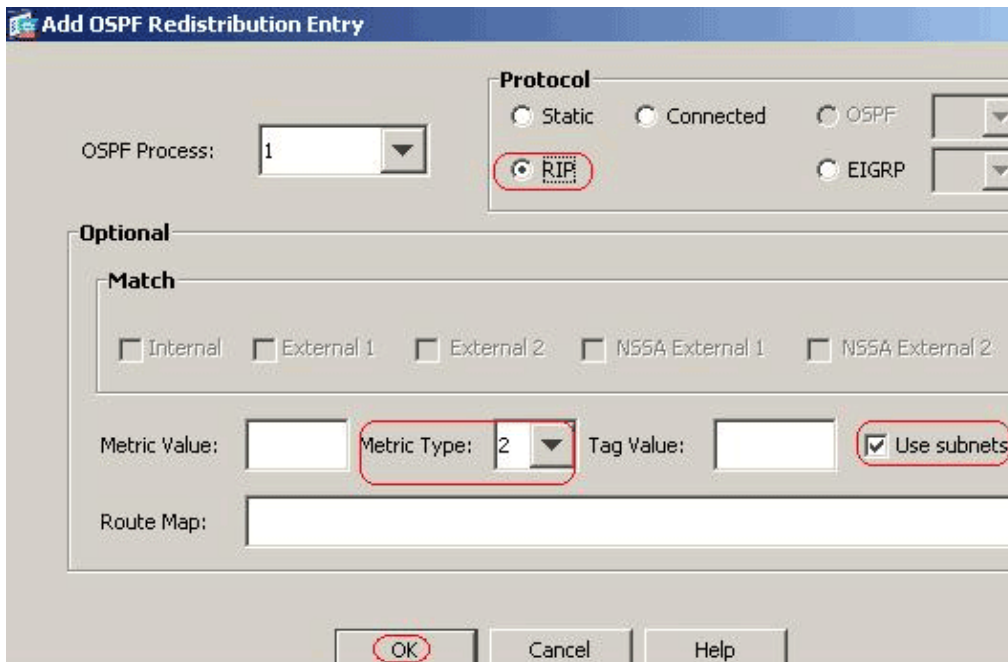
2. Click **Apply**.
3. Choose **Configuration > Device Setup > Routing > OSPF > Redistribution > Add** in order to redistribute RIP routes into OSPF.

Configuration > Device Setup > Routing > OSPF > Redistribution

Define the conditions for redistributing routes from one OSPF process to another.

OSPF Process	Protocol	Match	Subnets	Metric Value	Metric Type

4. Click **OK**, and then click **Apply**.



Equivalent CLI Configuration

CLI Configuration of ASA for Redistribute RIP into OSPF AS

```

router ospf 1
 network 10.1.1.0 255.255.255.0 area 0
 log-adj-changes
 redistribute rip subnets

router rip
 network 192.168.1.0

```

You can see the routing table of the neighbor IOS Router(R2) after redistributing RIP routes into OSPF AS.

R2#show ip route

```

Codes: C - connected, S - static, I - IGRP, R - RIP, M - mobile, B - BGP
       D - EIGRP, EX - EIGRP external, O - OSPF, IA - OSPF inter area
       N1 - OSPF NSSA external type 1, N2 - OSPF NSSA external type 2
       E1 - OSPF external type 1, E2 - OSPF external type 2, E - EGP
       i - IS-IS, su - IS-IS summary, L1 - IS-IS level-1, L2 - IS-IS level-2
       ia - IS-IS inter area, * - candidate default, U - per-user static route
       o - ODR, P - periodic downloaded static route

```

Gateway of last resort is not set

```

       172.16.0.0/16 is variably subnetted, 4 subnets, 2 masks
O       172.16.10.1/32 [110/11] via 172.16.1.2, 01:17:29, Ethernet1
O       172.16.5.1/32 [110/65] via 172.16.2.2, 01:17:29, Serial1
C       172.16.1.0/24 is directly connected, Ethernet1
C       172.16.2.0/24 is directly connected, Serial1
       10.0.0.0/24 is subnetted, 1 subnets
C       10.1.1.0 is directly connected, Ethernet0
O E2 192.168.1.0/24 [110/20] via 10.1.1.1, 01:17:29, Ethernet0

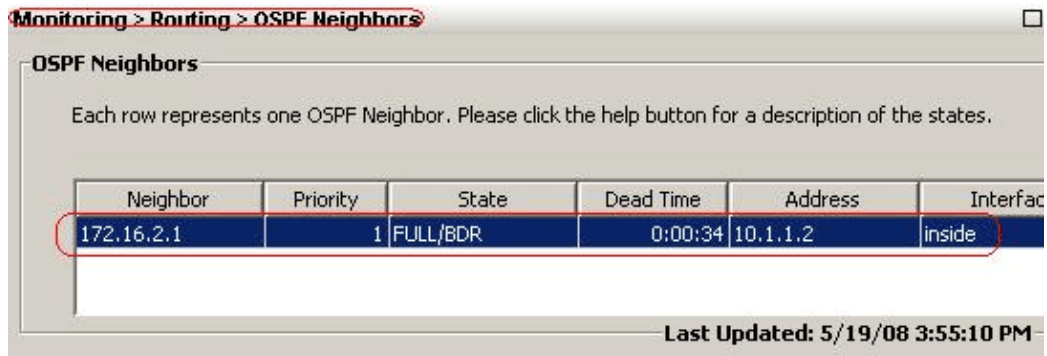
```

!--- Redistributed route advertised by Cisco ASA

Verify

Complete these steps to verify your configuration:

1. On ASDM, you can navigate to **Monitoring > Routing > OSPF Neighbors** to see each of the OSPF neighbors. This image shows the inside router (R2) as an active neighbor. You can also see the interface where this neighbor resides, neighbor router ID, state, and dead time.

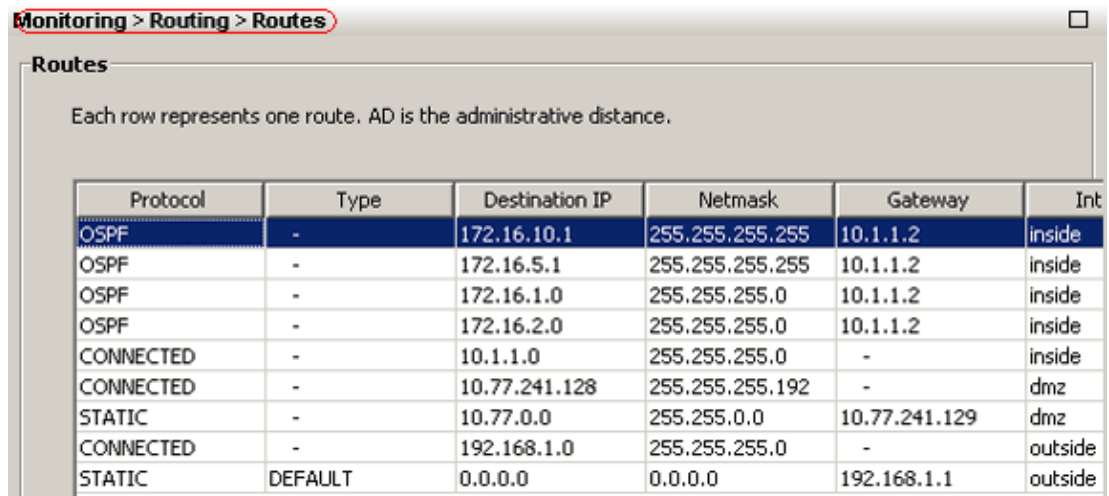


The screenshot shows the 'OSPF Neighbors' page in ASDM. The title bar reads 'Monitoring > Routing > OSPF Neighbors'. Below the title, there is a table with the following data:

Neighbor	Priority	State	Dead Time	Address	Interface
172.16.2.1	1	FULL/BDR	0:00:34	10.1.1.2	inside

At the bottom right of the table area, it says 'Last Updated: 5/19/08 3:55:10 PM'.

2. Additionally, you can verify the routing table if you navigate to **Monitoring > Routing > Routes**. In this image, the 172.16.1.0/24, 172.16.2.0/24, 172.16.5.0/24, and 172.16.10.0/24 networks are learned through R2 (10.1.1.2).



The screenshot shows the 'Routes' page in ASDM. The title bar reads 'Monitoring > Routing > Routes'. Below the title, there is a table with the following data:

Protocol	Type	Destination IP	Netmask	Gateway	Int
OSPF	-	172.16.10.1	255.255.255.255	10.1.1.2	inside
OSPF	-	172.16.5.1	255.255.255.255	10.1.1.2	inside
OSPF	-	172.16.1.0	255.255.255.0	10.1.1.2	inside
OSPF	-	172.16.2.0	255.255.255.0	10.1.1.2	inside
CONNECTED	-	10.1.1.0	255.255.255.0	-	inside
CONNECTED	-	10.77.241.128	255.255.255.192	-	dmz
STATIC	-	10.77.0.0	255.255.0.0	10.77.241.129	dmz
CONNECTED	-	192.168.1.0	255.255.255.0	-	outside
STATIC	DEFAULT	0.0.0.0	0.0.0.0	192.168.1.1	outside

3. From the CLI, you can use the **show route** command in order to get the same output.

```
ciscoasa#show route
```

```
Codes: C - connected, S - static, I - IGRP, R - RIP, M - mobile, B - BGP
       D - EIGRP, EX - EIGRP external, O - OSPF, IA - OSPF inter area
       N1 - OSPF NSSA external type 1, N2 - OSPF NSSA external type 2
       E1 - OSPF external type 1, E2 - OSPF external type 2, E - EGP
       i - IS-IS, L1 - IS-IS level-1, L2 - IS-IS level-2, ia - IS-IS inter area
       * - candidate default, U - per-user static route, o - ODR
       P - periodic downloaded static route
```

```
Gateway of last resort is 192.168.1.1 to network 0.0.0.0
```

```
O    172.16.10.1 255.255.255.255 [110/21] via 10.1.1.2, 0:00:06, inside
O    172.16.5.1 255.255.255.255 [110/75] via 10.1.1.2, 0:00:06, inside
O    172.16.1.0 255.255.255.0 [110/20] via 10.1.1.2, 0:00:06, inside
O    172.16.2.0 255.255.255.0 [110/74] via 10.1.1.2, 0:00:06, inside
C    10.1.1.0 255.255.255.0 is directly connected, inside
C    10.77.241.128 255.255.255.192 is directly connected, dmz
S    10.77.0.0 255.255.0.0 [1/0] via 10.77.241.129, dmz
```

```
C 192.168.1.0 255.255.255.0 is directly connected, outside
S* 0.0.0.0 0.0.0.0 [1/0] via 192.168.1.1, outside
```

4. You can also use the **show ospf database** command in order to obtain information about the learned networks and ospf topology.

```
ciscoasa#show ospf database
```

```
OSPF Router with ID (192.168.1.2) (Process ID 1)
```

```
Router Link States (Area 0)
```

Link ID	ADV Router	Age	Seq#	Checksum	Link count
172.16.1.2	172.16.1.2	123	0x80000039	0xfd1d	2
172.16.2.1	172.16.2.1	775	0x8000003c	0x9b42	4
172.16.5.1	172.16.5.1	308	0x80000038	0xb91b	3
192.168.1.2	192.168.1.2	1038	0x80000037	0x29d7	1

```
Net Link States (Area 0)
```

Link ID	ADV Router	Age	Seq#	Checksum
10.1.1.1	192.168.1.2	1038	0x80000034	0x72ee
172.16.1.1	172.16.2.1	282	0x80000036	0x9e68

5. The **show ospf neighbors** command is also useful in order to verify the active neighbors and correspondent information. This example shows the same information you obtained from ASDM on step 1.

```
ciscoasa#show ospf neighbor
```

Neighbor ID	Pri	State	Dead Time	Address	Interface
172.16.2.1	1	FULL/BDR	0:00:36	10.1.1.2	inside

Troubleshoot

This section includes information about debug commands that can be useful to troubleshoot OSPF problems.

Troubleshooting Commands

The Output Interpreter Tool (registered customers only) (OIT) supports certain **show** commands. Use the OIT to view an analysis of **show** command output.

Note: Refer to Important Information on Debug Commands before you use **debug** commands.

- **debug ospf events** Enables the debugging of OSPF events.

```
ciscoasa(config)#debug ospf events
OSPF events debugging is on
ciscoasa(config)# int e0/1
ciscoasa(config-if)# no shu
ciscoasa(config-if)#
OSPF: Interface inside going Up
OSPF: Send with youngest Key 1
OSPF: Rcv hello from 172.16.2.1 area 0 from inside 10.1.1.2
OSPF: 2 Way Communication to 172.16.2.1 on inside, state 2WAY
OSPF: Backup seen Event before WAIT timer on inside
OSPF: DR/BDR election on inside
OSPF: Elect BDR 172.16.2.1
OSPF: Elect DR 172.16.2.1
DR: 172.16.2.1 (Id) BDR: 172.16.2.1 (Id)
```

```

OSPF: Send DBD to 172.16.2.1 on inside seq 0x1abd opt 0x2 flag 0x7 len 32
OSPF: Send with youngest Key 1
OSPF: End of hello processing
OSPF: Rcv hello from 172.16.2.1 area 0 from inside 10.1.1.2
OSPF: End of hello processing
OSPF: Rcv DBD from 172.16.2.1 on inside seq 0x12f3 opt 0x42 flag 0x7 len 32 mtu
1500 state EXSTART
OSPF: First DBD and we are not SLAVE
OSPF: Rcv DBD from 172.16.2.1 on inside seq 0x1abd opt 0x42 flag 0x2 len 152 mt
u 1500 state EXSTART
OSPF: NBR Negotiation Done. We are the MASTER
OSPF: Send DBD to 172.16.2.1 on inside seq 0x1abe opt 0x2 flag 0x3 len 132
OSPF: Send with youngest Key 1
OSPF: Send with youngest Key 1
OSPF: Database request to 172.16.2.1
OSPF: sent LS REQ packet to 10.1.1.2, length 12
OSPF: Rcv DBD from 172.16.2.1 on inside seq 0x1abe opt 0x42 flag 0x0 len 32 mtu
1500 state EXCHANGE
OSPF: Send DBD to 172.16.2.1 on inside seq 0x1abf opt 0x2 flag 0x1 len 32
OSPF: Send with youngest Key 1
OSPF: Send with youngest Key 1
OSPF: Rcv DBD from 172.16.2.1 on inside seq 0x1abf opt 0x42 flag 0x0 len 32 mtu
1500 state EXCHANGE
OSPF: Exchange Done with 172.16.2.1 on inside
OSPF: Synchronized with 172.16.2.1 on inside, state FULL
OSPF: Send with youngest Key 1
OSPF: Send with youngest Key 1
OSPF: Rcv hello from 172.16.2.1 area 0 from inside 10.1.1.2
OSPF: Neighbor change Event on interface inside
OSPF: DR/BDR election on inside
OSPF: Elect BDR 192.168.1.2
OSPF: Elect DR 172.16.2.1
OSPF: Elect BDR 192.168.1.2
OSPF: Elect DR 172.16.2.1
      DR: 172.16.2.1 (Id)   BDR: 192.168.1.2 (Id)
OSPF: End of hello processing
OSPF: Send with youngest Key 1
OSPF: Send with youngest Key 1
OSPF: Send with youngest Key 1
OSPF: Send with youngest Key 1
OSPF: Rcv hello from 172.16.2.1 area 0 from inside 10.1.1.2
OSPF: End of hello processing
OSPF: Send with youngest Key 1
OSPF: Rcv hello from 172.16.2.1 area 0 from inside 10.1.1.2
OSPF: End of hello processing
OSPF: Send with youngest Key 1
OSPF: Rcv hello from 172.16.2.1 area 0 from inside 10.1.1.2
OSPF: End of hello processing
OSPF: Send with youngest Key 1
OSPF: Rcv hello from 172.16.2.1 area 0 from inside 10.1.1.2
OSPF: End of hello processing

```

Note: Refer to the debug ospf section of the Cisco Security Appliance Command Reference, Version 8.0 for more information on various commands which are useful for troubleshooting the problem.

Related Information

- [Cisco 5500 Series Adaptive Security Appliance Support Page](#)
 - [Cisco 500 Series PIX Support Page](#)
 - [PIX/ASA 8.X: Configuring EIGRP on the Cisco Adaptive Security Appliance \(ASA\)](#)
 - [Technical Support & Documentation – Cisco Systems](#)
-

[Contacts & Feedback](#) | [Help](#) | [Site Map](#)

© 2007 – 2008 Cisco Systems, Inc. All rights reserved. [Terms & Conditions](#) | [Privacy Statement](#) | [Cookie Policy](#) | [Trademarks of Cisco Systems, Inc.](#)

Updated: May 29, 2008

Document ID: 107196
