

Sample Configuration 2 – VINES over ISDN

Document ID: 10700

Introduction

Prerequisites

Requirements

Components Used

Conventions

Configure

Network Diagram

Configurations

Verify

Troubleshoot

NetPro Discussion Forums – Featured Conversations

Related Information

Introduction

This document provides a sample configuration for VINES over ISDN.

Prerequisites

Requirements

There are no specific requirements for this document.

Components Used

This document is not restricted to specific software and hardware versions.

Conventions

Refer to Cisco Technical Tips Conventions for more information on document conventions.

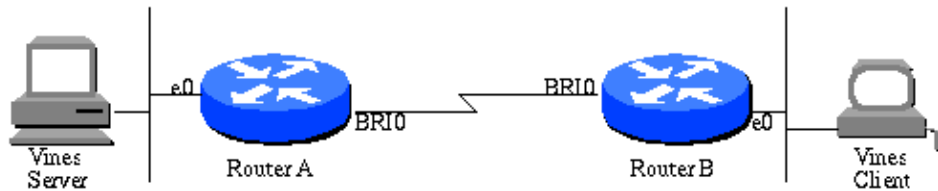
Configure

In this section, you are presented with the information to configure the features described in this document.

Note: Use the Command Lookup Tool (registered customers only) to find more information on the commands used in this document.

Network Diagram

This document uses this network setup:



Configurations

This document uses these configurations:

- Router A
- Router B

Router A
<pre> hostname RouterA username RouterB password 7 A1B2C3D4E5F6G7 vines routing 3009AE57:0001 isdn switch-type basic-net3 interface Ethernet0 ip address 198.92.60.135 255.255.255.0 vines metric 2 no mop enabled interface BRI0 no ip address encapsulation ppp vines metric 10 vines neighbor 3011B50E:0001 10 dialer map vines 3011B50E:0001 name RouterB broadcast 208 dialer hold-queue 10 dialer-group 1 ppp authentication chap vines route 002C501E 3011B50E:0001 50 vines access-list 100 deny RTP 00000000:0000 FFFFFFFF:FFFF 00000000:0000 FFFFFFFF:FFFF vines access-list 100 permit IP 00000000:0000 FFFFFFFF:FFFF 00000000:0000 FFFFFFFF:FFFF dialer-list 1 protocol vines list 100 </pre>

Router B
<pre> hostname RouterB username RouterA password 7 A1B2C3D4E5F6G7 vines routing 3011B50E:0001 isdn switch-type basic-net3 interface Ethernet0 ip address 198.92.60.116 255.255.255.0 vines metric 2 no mop enabled interface BRI0 no ip address encapsulation ppp vines metric 10 vines neighbor 3009AE57:0001 10 dialer map vines 3009AE57:0001 name RouterA broadcast 203 dialer hold-queue 10 dialer-group 1 ppp authentication chap vines access-list 100 deny RTP 00000000:0000 FFFFFFFF:FFFF 00000000:0000 FFFFFFFF:FFFF vines access-list 100 permit IP 00000000:0000 FFFFFFFF:FFFF 00000000:0000 FFFFFFFF:FFFF dialer-list 1 protocol vines list 100 </pre>

This configuration allows VINES traffic to trigger a dial-out on the ISDN link.

Note: Router B supports a serverless client.

Verify

There is currently no verification procedure available for this configuration.

Troubleshoot

There is currently no specific troubleshooting information available for this configuration.

NetPro Discussion Forums – Featured Conversations

Networking Professionals Connection is a forum for networking professionals to share questions, suggestions, and information about networking solutions, products, and technologies. The featured links are some of the most recent conversations available in this technology.

NetPro Discussion Forums – Featured Conversations for LAN
Network Infrastructure: LAN Routing and Switching
Network Infrastructure: Getting Started with LANs

Related Information

- [Technical Support & Documentation – Cisco Systems](#)
-

All contents are Copyright © 2006–2007 Cisco Systems, Inc. All rights reserved. Important Notices and Privacy Statement.

Updated: Jul 30, 2007

Document ID: 10700
