

# End-to-End PVC Management With Frame Relay to ATM Service Interworking (FRF.8)

Document ID: 10440

---

## Introduction

### Before You Begin

Conventions

Prerequisites

Components Used

### Configure

FRF.8 PVC Management Procedures

Example Using a Catalyst 8540 MSR as the IWF Switch

Example Using a Cisco 7200 Router as the IWF

### Troubleshoot

### Related Information

---

## Introduction

In the FRF.8 implementation agreement, the Frame Relay Forum Frame Relay Forum [FRF](#) (FRF) defines communication between a Frame Relay endpoint and an ATM endpoint through a router or switch that interworks or connects the two layer-2 protocols. This document describes permanent virtual circuit (PVC) management procedures over a FRF.8 service interworking (IWF) connection and provides a sample configuration using a router and a switch.

## Before You Begin

### Conventions

For more information on document conventions, see the Cisco Technical Tips Conventions.

### Prerequisites

There are no specific prerequisites for this document.

### Components Used

This document is not restricted to specific software and hardware versions.

The information presented in this document was created from devices in a specific lab environment. All of the devices used in this document started with a cleared (default) configuration. If you are working in a live network, ensure that you understand the potential impact of any command before using it.

## Configure

In this section, you are presented with the information to configure the features described in this document.

**Note:** To find additional information on the commands used in this document, use the Command Lookup Tool (registered customers only).

## FRF.8 PVC Management Procedures

Section 5.2 of FRF.8 describes ATM and Frame Relay PVC management procedures. On the ATM side, these procedures use F5 operations, administration, and maintenance (OAM) cells and Interim Local Management Interface (ILMI) Management Information Base (MIB) variables. The ATM status information is then mapped to the corresponding Frame Relay status indicators by the interworking device.

The Frame Relay side uses the local management interface (LMI) protocol to communicate status information. The standard 2-byte Frame Relay header does not include any fields that indicate the status of a virtual circuit (VC) to the endpoint. The LMI protocol thus augments Frame Relay with a mechanism that notifies the endpoint when a permanent virtual circuit (PVC) has been added, deleted or changed state. It also provides a polling mechanism which verifies the link remains operational. It sends LMI frames on a data link connection identifier (DLCI) that is different from the DLCI used for data traffic.

The message type field in the LMI frame is eight bits and consists of Status Enquiry and Status messages. Every few seconds, the Frame Relay endpoint (user) sends a Status Enquiry message to the network; this message verifies link integrity. The network responds with a Status message containing the requested information. After a defined number of status enquiries, the Frame Relay endpoint requests a so-called full status response. The network responds with a status message that contains an information element (IE) for every PVC configured on that link.

The PVC status IE is five bytes. In addition to the DLCI of the reported PVC, the IE contains two important status bits:

- New bit – Set by the network when a PVC is added on a switch. The network continues to set the new bit to one in the full status message until it receives a status enquiry message from the Frame Relay endpoint (user) which contains a receive sequence number equal to the network's current send sequence number.
- Active bit – Set when the network is satisfied that a complete path to a destination exists and that the PVC is fully established end to end.

One caveat with the Frame Relay status mechanism is that it is not a real-time process and must wait for scheduled status messages to be sent. In some cases, timing issues may arise if, after the PVC becomes available in the network, the two Frame Relay endpoints receive a full status message with the active bit set to one at different times. One endpoint will be sending data frames across the PVC before the other endpoint (the destination) has received an active status message.

The LMI protocol overcomes this weakness with the asynchronous status report type IE. An asynchronous message consists of status and status enquiry messages sent immediately after a change in PVC status and without waiting for the message timers to expire. Procedures for the asynchronous status message are not supported on Cisco routers doing the interworking.

Based on the status bits, a PVC is assigned one of four status values on the Frame Relay side. The switch or Cisco router performing the IWF uses a set of criteria to determine which status to assign to the VC.

Status	Indications and Matching Criteria
Added	Frame Relay network sets the new bit in a full status report to the IWF.
Deleted	IWF reports this status to the Frame Relay network in a full status report.
Inactive	IWF uses the following criteria to determine inactive status:

	<ul style="list-style-type: none"> <li>• An alarm indication signal (AIS) or remote defect indicator (RDI) OAM F5 cell indicates explicitly that the ATM PVC is down somewhere along the end-to-end path.</li> <li>• The ILMI MIB reports localDown or end2EndDown in the variable atmVccOperStatus.</li> </ul> <p>IWF sends a full Status report with the Active bit set to zero.</p>
Active	<p>IWF uses the following criteria to determine active status:</p> <ul style="list-style-type: none"> <li>• There is no AIS OAM cell and no RDI OAM cell from the ATM network for a time interval as defined in the OAM specification, ITU-I.610</li> <li>• The ILMI MIB does not report localDown or end2EndDown in the variable atmVccOperStatus.</li> </ul> <p>IWF places the VC in active status on the Frame Relay side when both criteria are met (if both are used) and where there are no physical alarms detected by the IWF on the ATM side. The IWF sends a full status report with the Active bit set to one to the Frame Relay network.</p>

## Example Using a Catalyst 8540 MSR as the IWF Switch

The example below shows a Catalyst 8540 MSR as the IWF switch.

### Network Diagram

The topology appears as follows:



**Note:** The ATM-router is a 7500 router using a PA-A3-OC3MM in a VIP2-50 and running 12.1(13)E. The FR-router is a 7200 router running 12.1(17). The ATM/FR-IWF-switch is an catalyst 8540MSR running 12.1(12c)EY.

### Configurations

FR-router
<pre> controller E1 4/0 channel-group 0 timeslots 1-31 </pre>

```

!
interface Serial4/0:0
 ip address 12.12.12.2 255.255.255.0
 encapsulation frame-relay IETF
 no fair-queue
 frame-relay map ip 12.12.12.1 123 broadcast

```

### ATM-FR/IWF-switch

```

controller E1 10/0/0
 channel-group 1 timeslots 1-31
!
interface Serial10/0/0:1
 no ip address
 encapsulation frame-relay IETF
 no arp frame-relay
 frame-relay intf-type dce
 frame-relay pvc 123 service translation interface ATM9/1/2 0 123
 atm oam interface ATM9/1/2 0 123

```

### ATM-router

```

interface ATM2/1/0.1 point-to-point
 ip address 12.12.12.1 255.255.255.0
 pvc 0/123
 oam-pvc manage
 encapsulation aal5snap

```

## Show Commands

### ATM-router#show atm pvc 0/123

```

ATM2/1/0.1: VCD: 2, VPI: 0, VCI: 123
UBR, PeakRate: 149760
AAL5-LLC/SNAP, etype:0x0, Flags: 0xC20, VCmode: 0x0
OAM frequency: 10 second(s), OAM retry frequency: 1 second(s), OAM retry frequency: 1 second(s)
OAM up retry count: 3, OAM down retry count: 5
OAM Loopback status: OAM Received
OAM VC state: Verified
ILMI VC state: Not Managed
VC is managed by OAM.
InARP frequency: 15 minutes(s)
Transmit priority 4
InPkts: 5, OutPkts: 8, InBytes: 540, OutBytes: 624
InPRoc: 5, OutPRoc: 5
InFast: 0, OutFast: 0, InAS: 0, OutAS: 3
InPktDrops: 0, OutPktDrops: 0
CrcErrors: 0, SarTimeOuts: 0, OverSizedSDUs: 0
OAM cells received: 124713
F5 InEndloop: 74872, F5 InSegloop: 49841, F5 InAIS: 0, F5 InRDI: 0
F4 InEndloop: 0, F4 InSegloop: 0, F4 InAIS: 0, F4 InRDI: 0
OAM cells sent: 124756
F5 OutEndloop: 74915, F5 OutSegloop: 49841, F5 OutRDI: 0
F4 OutEndloop: 0, F4 OutSegloop: 0, F4 OutRDI: 0
OAM cell drops: 0
Status: UP

```

### FR-router#show frame-relay pvc

PVC Statistics for interface **Serial4/0:0** (Frame Relay DTE)

	Active	Inactive	Deleted	Static
Local	1	0	0	0
Switched	0	0	0	0

Unused 0 0 0 0

**DLCI = 123**, DLCI USAGE = LOCAL, **PVC STATUS = ACTIVE**, INTERFACE = Serial4/0:0

input pkts 8 output pkts 5 in bytes 1633  
out bytes 520 dropped pkts 0 in FECN pkts 0  
in BECN pkts 0 out FECN pkts 0 out BECN pkts 0  
in DE pkts 0 out DE pkts 0  
out bcast pkts 0 out bcast bytes 0  
pvc create time 00:02:44, last time pvc status changed 00:02:44

**ATM-FR/IWF-switch#show frame-relay pvc**

PVC Statistics for **interface Serial10/0/0:1** (Frame Relay DCE)

	Active	Inactive	Deleted	Static
Local	0	0	0	0
Switched	1	0	0	0
Unused	0	0	0	0

**DLCI = 123**, DLCI USAGE = SWITCHED, **PVC STATUS = ACTIVE**, INTERFACE = Serial10/0/0:1

input pkts 5 output pkts 6 in bytes 520  
out bytes 550 dropped pkts 0 in FECN pkts 0  
in BECN pkts 0 out FECN pkts 0 out BECN pkts 0  
in DE pkts 0 out DE pkts 0  
out bcast pkts 4151 out bcast bytes 1494481 Num Pkts Switched 0  
pvc create time 2d21h, last time pvc status changed 2d21h

**ATM-FR/IWF-switch#show atm vc interface atm 9/1/2 0 123**

Interface: ATM9/1/2, Type: oc3suni  
VPI = 0 VCI = 123  
**Status: UP**  
Time-since-last-status-change: 2d21h  
Connection-type: PVC  
Cast-type: point-to-point  
Packet-discard-option: disabled  
Usage-Parameter-Control (UPC): pass  
Wrr weight: 2  
Number of OAM-configured connections: 32  
OAM-configuration: Seg-loopback-on End-to-end-loopback-on Ais-on Rdi-on  
**OAM-states: OAM-Up**  
OAM-Loopback-Tx-Interval: 5  
Cross-connect-interface: ATM-P10/0/0, Type: ATM-PSEUDO  
Cross-connect-VPI = 1  
Cross-connect-VCI = 155  
Cross-connect-UPC: pass  
Cross-connect OAM-configuration: Ais-on  
Cross-connect OAM-state: OAM-Up  
OAM-Loopback-Tx-Interval: 5  
Threshold Group: 3, Cells queued: 0  
Rx cells: 16, Tx cells: 15  
Tx Clp0:15, Tx Clp1: 0  
Rx Clp0:16, Rx Clp1: 0  
Rx Upc Violations:9, Rx cell drops:0  
Rx Clp0 q full drops:0, Rx Clp1 qthresh drops:0  
Rx connection-traffic-table-index: 100  
Rx service-category: VBR-NRT (Non-Realtime Variable Bit Rate)  
Rx pcr-clp01: 81  
Rx scr-clp0 : 81  
Rx mcr-clp01: none  
Rx cdvt: 1024 (from default for interface)  
Rx mbs: 50  
Tx connection-traffic-table-index: 100  
Tx service-category: VBR-NRT (Non-Realtime Variable Bit Rate)

```
Tx pcr-clp01: 81
Tx scr-clp0 : 81
Tx mcr-clp01: none
Tx      cdvt: none
Tx      mbs: 50
```

## Scenario One

Using the configuration described above, let's see how both routers react to failures within the network. In this first scenario, we will shut down the ATM-router ATM interface and see what the impact of this failure on the FR-router PVC is.

1. Shutdown the ATM sub-interface on the ATM-router:

```
ATM-router#config terminal
Enter configuration commands, one per line.  End with CNTL/Z.
ATM-router(config)#interface atm 2/1/0.1
ATM-router(config-subif)#shut
```

2. Check the status of the PVC on the ATM-FR/IWF-switch:

```
ATM-FR/IWF-switch#show atm vc interface atm 9/1/2 0 123
```

```
Interface: ATM9/1/2, Type: oc3suni
VPI = 0   VCI = 123
Status: UP
Time-since-last-status-change: 00:00:44
Connection-type: PVC
Cast-type: point-to-point
Packet-discard-option: disabled
Usage-Parameter-Control (UPC): pass
Wrr weight: 2
Number of OAM-configured connections: 32
OAM-configuration: Seg-loopback-on End-to-end-loopback-on Ais-on Rdi-on
OAM-states:  OAM-Up Segment-loopback-failed End-to-end-loopback-failed
OAM-Loopback-Tx-Interval: 5
Cross-connect-interface: ATM-P10/0/0, Type: ATM-PSEUDO
Cross-connect-VPI = 1
Cross-connect-VCI = 155
Cross-connect-UPC: pass
Cross-connect OAM-configuration: Ais-on
Cross-connect OAM-state: OAM-Up
OAM-Loopback-Tx-Interval: 5
Threshold Group: 3, Cells queued: 0
Rx cells: 1, Tx cells: 0
Tx Clp0:0, Tx Clp1: 0
Rx Clp0:1, Rx Clp1: 0
Rx Upc Violations:0, Rx cell drops:0
Rx Clp0 q full drops:0, Rx Clp1 qthresh drops:0
Rx connection-traffic-table-index: 100
Rx service-category: VBR-NRT (Non-Realtime Variable Bit Rate)
Rx pcr-clp01: 81
Rx scr-clp0 : 81
Rx mcr-clp01: none
Rx      cdvt: 1024 (from default for interface)
Rx      mbs: 50
Tx connection-traffic-table-index: 100
Tx service-category: VBR-NRT (Non-Realtime Variable Bit Rate)
Tx pcr-clp01: 81
Tx scr-clp0 : 81
Tx mcr-clp01: none
Tx      cdvt: none
Tx      mbs: 50
```

3. Check the PVC status on the FR-router:

```
FR-router#show frame-relay pvc
```

```
PVC Statistics for interface Serial4/0:0 (Frame Relay DTE)
```

	Active	Inactive	Deleted	Static
Local	0	1	0	0
Switched	0	0	0	0
Unused	0	0	0	0

```
DLCI = 123, DLCI USAGE = LOCAL, PVC STATUS = INACTIVE, INTERFACE = Serial4/0:0
```

```
input pkts 18          output pkts 5          in bytes 4320
out bytes 520         dropped pkts 5        in FECN pkts 0
in BECN pkts 0       out FECN pkts 0      out BECN pkts 0
in DE pkts 0         out DE pkts 0
out bcast pkts 0     out bcast bytes 0
pvc create time 00:15:21, last time pvc status changed 00:03:50
```

As you can see in the outputs above, a failure on the ATM side is reflected on the FR side. Indeed, the FR PVC goes into INACTIVE state.

## Scenario Two

Now, let's see what happens on the ATM side when a failure occurs within the FR cloud. To simulate that type of failure, let's shut down the serial interface on the FR-router and see how the ATM-router reacts.

1. Shut down the serial interface on the FR-router and see how the ATM-router reacts:

```
FR-router#config terminal
Enter configuration commands, one per line.  End with CNTL/Z.
FR-router(config)#int serial 4/0:0
FR-router(config-if)#shut
```

2. **debug atm oam** is enabled on the ATM-router. We can see that, upon detection of the failure, the ATM-FR/IWF-switch is sending an AIS signal to the ATM router:

```
3d12h: atm_oam_ais(ATM2/1/0): AIS signal, failure=0x6A, VC 0/123
3d12h: atm_oam_setstate - VCD#3, VC 0/123: newstate = AIS/RDI
3d12h: %LINEPROTO-5-UPDOWN: Line protocol on Interface ATM2/1/0.1, changed state
3d12h: atm_oam_ais_inline(ATM2/1/0): AIS signal, failure=0x6A, VC 0/123
```

If we check the PVC status on the ATM-router, we can see that the PVC is down:

```
ATM-router#show atm pvc 0/123
ATM2/1/0.1: VCD: 3, VPI: 0, VCI: 123
UBR, PeakRate: 149760
AAL5-LLC/SNAP, etype:0x0, Flags: 0xC20, VCmode: 0x0
OAM frequency: 10 second(s), OAM retry frequency: 1 second(s), OAM retry frequency:
OAM up retry count: 3, OAM down retry count: 5
OAM Loopback status: OAM Received
OAM VC state: AIS/RDI
ILMI VC state: Not Managed
VC is managed by OAM.
InARP frequency: 15 minutes(s)
Transmit priority 4
InPkts: 0, OutPkts: 4, InBytes: 0, OutBytes: 112
InPRoc: 0, OutPRoc: 0
InFast: 0, OutFast: 0, InAS: 0, OutAS: 4
InPktDrops: 0, OutPktDrops: 0
CrcErrors: 0, SarTimeOuts: 0, OverSizedSDUs: 0
OAM cells received: 304
F5 InEndloop: 114, F5 InSegloop: 69, F5 InAIS: 121, F5 InRDI: 0
F4 InEndloop: 0, F4 InSegloop: 0, F4 InAIS: 0, F4 InRDI: 0
OAM cells sent: 310
```

```
F5 OutEndloop: 120, F5 OutSegloop: 69, F5 OutRDI: 121
F4 OutEndloop: 0, F4 OutSegloop: 0, F4 OutRDI: 0
OAM cell drops: 0
Status: DOWN, State: NOT_VERIFIED
```

### 3. Check the status on the ATM-FR/IWF-switch:

```
ATM-FR/IWF-switch#show atm vc interface atm 9/1/2 0 123
```

```
Interface: ATM9/1/2, Type: oc3suni
VPI = 0 VCI = 123
Status: DOWN
Time-since-last-status-change: 00:03:04
Connection-type: PVC
Cast-type: point-to-point
Packet-discard-option: disabled
Usage-Parameter-Control (UPC): pass
Wrr weight: 2
Number of OAM-configured connections: 32
OAM-configuration: Seg-loopback-on End-to-end-loopback-on Ais-on Rdi-on
OAM-states: OAM-Up
OAM-Loopback-Tx-Interval: 5
Cross-connect-interface: ATM-P10/0/0, Type: ATM-PSEUDO
Cross-connect-VPI = 1
Cross-connect-VCI = 155
Cross-connect-UPC: pass
Cross-connect OAM-configuration: Ais-on
Cross-connect OAM-state: OAM-Down
OAM-Loopback-Tx-Interval: 5
Threshold Group: 3, Cells queued: 0
Rx cells: 3, Tx cells: 0
Tx Clp0:0, Tx Clp1: 0
Rx Clp0:3, Rx Clp1: 0
Rx Upc Violations:0, Rx cell drops:0
Rx Clp0 q full drops:0, Rx Clp1 qthresh drops:0
Rx connection-traffic-table-index: 100
Rx service-category: VBR-NRT (Non-Realtime Variable Bit Rate)
Rx pcr-clp01: 81
Rx scr-clp0 : 81
Rx mcr-clp01: none
Rx      cdvt: 1024 (from default for interface)
Rx      mbs: 50
Tx connection-traffic-table-index: 100
Tx service-category: VBR-NRT (Non-Realtime Variable Bit Rate)
Tx pcr-clp01: 81
Tx scr-clp0 : 81
Tx mcr-clp01: none
Tx      cdvt: none
Tx      mbs: 50
```

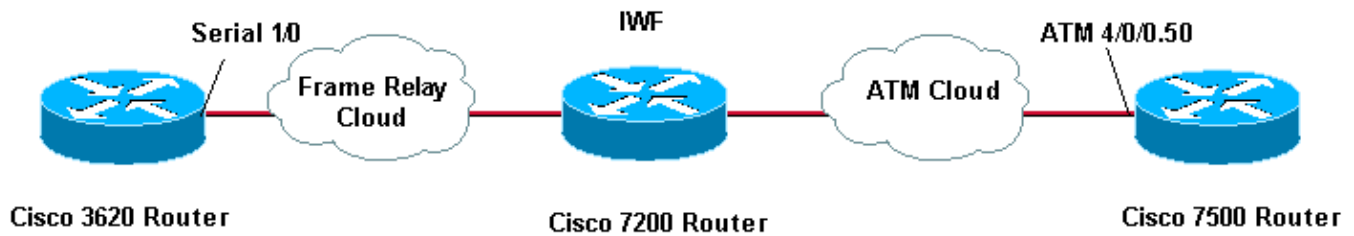
So, we can see that, thanks to OAM, the ATM router will react to a failure within the FR cloud by bringing down the corresponding ATM PVC.

### Known Caveats

- CSCdu78168 (duplicate of CSCdt04356): OAM management does not work on MSR with FR to ATM IWF

## Example Using a Cisco 7200 Router as the IWF

## Network Diagram



## Configurations

```
3620
interface Serial1/0
ip address 10.10.10.1 255.255.255.0
encapsulation frame-relay IETF
frame-relay interface-dlci 50
frame-relay lmi-type ansi
```

```
7206
frame-relay switching
!
interface Serial4/3
no ip address
encapsulation frame-relay IETF
frame-relay interface-dlci 50 switched
frame-relay lmi-type ansi
frame-relay intf-type dce
clockrate 115200
!
interface ATM5/0
no ip address
atm clock INTERNAL
no atm ilmi-keepalive
pvc 5/50
vbr-nrt 100 75
oam-pvc manage
encapsulation aal5mux fr-atm-srv
!
connect SIVA Serial4/3 50 ATM5/0 5/50 service-interworking
```

```
7500
interface atm 4/0/0.50 multi
ip address 10.10.10.2 255.255.255.0
pvc 5/50
vbr-nrt 100 75 30
protocol ip 10.10.10.1
```

## Scenario One

The following scenario assumes that we have configured the ATM endpoint and the ATM interface on the IWF with the **oam-pvc manage** command. We will remove the PVC configuration statement from the ATM endpoint. When the ATM PVC comes down, the Frame Relay PVC changes to inactive status.

1. Enable **debug atm oam** and clear the counters

```

1d09h: ATM OAM(ATM4/0/0.50): Timer: VCD#5 VC 5/50 Status:2 CTag:8586 Tries:0
1d09h: ATM OAM LOOP(ATM4/0/0.50) O: VCD#5 VC 5/50 CTag:218B
1d09h: ATM OAM LOOP(ATM4/0/0) I: VCD#5 VC 5/50 LoopInd:0 CTag:218B
1d09h: ATM OAM LOOP(ATM4/0/0) I: VCD#5 VC 5/50 LoopInd:1 CTag:4850
1d09h: ATM OAM LOOP(ATM4/0/0.50) O: VCD#5 VC 5/50 CTag:4850

```

2. Delete the PVC from the ATM endpoint with the "no" form of the new-style pvc command.

```

7500#configure terminal
Enter configuration commands, one per line. End with CNTL/Z.
7500(config)#interface atm 4/0/0.50
7500(config-subif)#no pvc 5/50

```

3. Execute the **show atm vc** command and confirm the status of the VC is DOWN on the IWF 7200.

```

7200#show atm vc

```

Interface	Name	VPI	VCI	Type	Encaps	SC	Peak Kbps	Avg/Min Kbps	Burst Cells	Sts
5/0.200	test	2	20	PVC	SNAP	UBR	149760			UP
5/0.100		2	300	PVC	SNAP	UBR	149760			UP
5/0		1	50	PVC	FRATMSRV	VBR	100	75	95	DOWN

4. Execute the **show atm pvc {vpi/vci}** command and confirm OAM VC state: Not Verified.

```

7200#show atm pvc 5/50
ATM5/0: VCD: 1, VPI: 5, VCI: 50
VBR-NRT, PeakRate: 100, Average Rate: 75, Burst Cells: 95
AAL5-FRATMSRV, etype:0x15, Flags: 0x23, VCmode: 0x0
OAM frequency: 10 second(s), OAM retry frequency: 1 second(s), OAM retry frequ
OAM up retry count: 3, OAM down retry count: 5
OAM Loopback status: OAM Sent
OAM VC state: Not Verified
ILMI VC state: Not Managed
VC is managed by OAM.
InARP DISABLED
Transmit priority 2
InPkts: 0, OutPkts: 0, InBytes: 0, OutBytes: 0
InPRoc: 0, OutPRoc: 0, Broadcasts: 0
InFast: 0, OutFast: 0, InAS: 0, OutAS: 0
InPktDrops: 0, OutPktDrops: 0
CrcErrors: 0, SarTimeOuts: 0, OverSizedSDUs: 0, LengthViolation: 0, CPIErrors: 0
Out CLP=1 Pkts: 0
OAM cells received: 19
F5 InEndloop: 19, F5 InSegloop: 0, F5 InAIS: 0, F5 InRDI: 0
F4 InEndloop: 0, F4 InSegloop: 0, F4 InAIS: 0, F4 InRDI: 0
OAM cells sent: 82
F5 OutEndloop: 82, F5 OutSegloop: 0, F5 OutRDI: 0
F4 OutEndloop: 0, F4 OutSegloop: 0, F4 OutRDI: 0
OAM cell drops: 0
Status: DOWN, State: NOT_VERIFIED

```

5. Enable debug frame-relay packet on the Frame Relay endpoint. Observe the sequence of Status and Status Enquiry (StEnq) messages exchanged between the user and network ends of the Frame Relay connection. Confirm that the status of the VC changes from 0x2 (active) to 0x0 (inactive).

```

*Apr 7 01:53:18.407: Serial1/0(in): Status, myseq 69
*Apr 7 01:53:18.407: RT IE 1, length 1, type 0
*Apr 7 01:53:18.407: KA IE 3, length 2, yourseq 67, myseq 69
*Apr 7 01:53:18.407: PVC IE 0x7 , length 0x3 , dlci 50, status 0x2

```

*! -- A value of 0x2 indicates active status.*

```

*Apr 7 01:53:28.403: Serial1/0(out): StEnq, myseq 70, yourseen 67, DTE up
*Apr 7 01:53:28.403: datagramstart = 0x3D53954, datagramsize = 14
*Apr 7 01:53:28.403: FR encaps = 0x00010308
*Apr 7 01:53:28.403: 00 75 95 01 01 01 03 02 46 43
*Apr 7 01:53:28.403:
*Apr 7 01:53:28.407: Serial1/0(in): Status, myseq 70

```

```

*Apr 7 01:53:28.407: RT IE 1, length 1, type 1
*Apr 7 01:53:28.407: KA IE 3, length 2, yourseq 68, myseq 70
*Apr 7 01:53:38.403: Serial1/0(out): StEnq, myseq 71, yourseen 68, DTE up
*Apr 7 01:53:38.403: datagramstart = 0x3D53954, datagramsize = 14
*Apr 7 01:53:38.403: FR encap = 0x00010308
*Apr 7 01:53:38.403: 00 75 95 01 01 01 03 02 47 44
*Apr 7 01:53:38.403:
*Apr 7 01:53:38.407: Serial1/0(in): Status, myseq 71
*Apr 7 01:53:38.407: RT IE 1, length 1, type 0
*Apr 7 01:53:38.407: KA IE 3, length 2, yourseq 69, myseq 71
*Apr 7 01:53:38.407: PVC IE 0x7 , length 0x3 , dlci 50, status 0x0

```

*! -- A value of 0x0 indicates inactive status.*

The possible values of the status field are explained below:

- ◆ **0x0** – Added and inactive. The DLCI is programmed in the switch, but is not usable. One potential reason is that the other end of the PVC is down.
  - ◆ **0x2** – Added and active. The DLCI is programmed in the switch, and the PVC is operational.
  - ◆ **0x3** – Combines active status (0x2) and the receiver not ready (RNR) (or r-bit) that is set (0x1). A value of 0x03 means that the switch or a particular queue on the switch for this PVC is backed up, so the Frame Relay interface stops transmitting to avoid lost frames.
  - ◆ **0x4** – Deleted. The DLCI is not programmed in the switch, but was programmed previously. Alternately, a deleted status can be caused by the DLCIs being reversed on the router or by the PVC being deleted by the telco in the Frame Relay cloud. Configuring a DLCI on a Frame Relay endpoint without a matching value on the switch leads to a 0x4 status value for the VC.
6. If you cannot run **debug frame-relay packet** on a production router, simply execute **show frame pvc** and confirm that the Frame Relay endpoint lists at least one inactive local PVC.

```

3620#show frame pvc
PVC Statistics for interface Serial1/0 (Frame Relay DTE)
      Active      Inactive      Deleted      Static
Local          0             1             0             0
Switched       0             0             0             0
Unused         0             0             0             0
DLCI = 50, DLCI USAGE = LOCAL, PVC STATUS = INACTIVE, INTERFACE = Serial1/0
input pkts 0          output pkts 0          in bytes 0
out bytes 0          dropped pkts 0         in FECN pkts 0
in BECN pkts 0      out FECN pkts 0 out   BECN pkts 0
in DE pkts 0        out DE pkts 0
out bcst pkts 0     out bcst bytes 0
pvc create time 3d04h, last time pvc status changed 00:05:04

```

## Scenario Two

The following scenario assumes that we simply remove the **oam-pvc manage** command from the IWF 7200. The ATM VC remains in the UP status and in turn remains active on the Frame Relay side.

1. Remove the **oam-pvc manage** command on the IWF 7200's ATM interface.

```

7200(config)#int atm 5/0
7200(config-if)#pvc 5/50
7200(config-if-atm-vc)#no oam-pvc manage
7200(config-if-atm-vc)#end
7200#show atm vc
*May 31 01:20:01.499: %LINEPROTO-5-UPDOWN: Line protocol on Interface ATM5/0,
VCD /
Interface Name  VPI  VCI  Type  Encaps  SC  Peak  Avg/Min Burst  Sts
5/0.100        2    3    300  PVC     SNAP  UBR  149760          UP
5/0            1    5    50   PVC     FRATMSRV  VBR  100           75          95          UP

```

2. Use the "no" form of the **pvc** command to delete the PVC on the ATM endpoint.

```
7500(config)#int atm 4/0/0.50
7500(config-subif)#no pvc 5/50
7500(config-subif)#end
```

3. The **show atm pvc vpi/vci** command confirms that the status remains UP on the ATM side.

```
7200-2.4#show atm pvc 5/50
ATM5/0: VCD: 1, VPI: 5, VCI: 50
VBR-NRT, PeakRate: 100, Average Rate: 75, Burst Cells: 95
AAL5-FRATMSRV, etype:0x15, Flags: 0x23, VCmode: 0x0
OAM frequency: 0 second(s), OAM retry frequency: 1 second(s), OAM retry frequency: 5
OAM up retry count: 3, OAM down retry count: 5
OAM Loopback status: OAM Disabled
OAM VC state: Not Managed
ILMI VC state: Not Managed
InARP DISABLED
Transmit priority 2
InPkts: 15, OutPkts: 19, InBytes: 1680, OutBytes: 1332
InPRoc: 0, OutPRoc: 0, Broadcasts: 0
InFast: 15, OutFast: 19, InAS: 0, OutAS: 0
InPktDrops: 0, OutPktDrops: 0
CrcErrors: 0, SarTimeOuts: 0, OverSizedSDUs: 0, LengthViolation: 0, CPiErrors: 0
Out CLP=1 Pkts: 0
OAM cells received: 157
F5 InEndloop: 157, F5 InSegloop: 0, F5 InAIS: 0, F5 InRDI: 0
F4 InEndloop: 0, F4 InSegloop: 0, F4 InAIS: 0, F4 InRDI: 0
OAM cells sent: 214
F5 OutEndloop: 214, F5 OutSegloop: 0, F5 OutRDI: 0
F4 OutEndloop: 0, F4 OutSegloop: 0, F4 OutRDI: 0
OAM cell drops: 0
Status: UP
```

4. The status of the PVC on the Frame Relay side also remains active.

```
*Apr 7 02:25:08.407: Serial1/0(in): Status, myseq 5
*Apr 7 02:25:08.407: RT IE 1, length 1, type 0
*Apr 7 02:25:08.407: KA IE 3, length 2, yourseq 3 , myseq 5
*Apr 7 02:25:08.407: PVC IE 0x7 , length 0x3 , dlci 50, status 0x2
```

*! -- The Frame Relay PVC retains an active status (0x2).*

```
*Apr 7 02:25:18.403: Serial1/0(out): StEnq, myseq 6, yourseen 3, DTE up
*Apr 7 02:25:18.403: datagramstart = 0x3D53094, datagramsize = 14
*Apr 7 02:25:18.403: FR encap = 0x00010308
*Apr 7 02:25:18.403: 00 75 95 01 01 00 03 02 06 03
```

5. The **show frame pvc** command confirms the active status of the PVC on the Frame Relay endpoint.

```
3620#show frame pvc
PVC Statistics for interface Serial1/0 (Frame Relay DTE)
      Active Inactive Deleted Static
Local      1         0         0         0
Switched   0         0         0         0
Unused     0         0         0         0
DLCI = 50, DLCI USAGE = LOCAL, PVC STATUS = ACTIVE, INTERFACE = Serial1/0
input pkts 0          output pkts 0          in bytes 0
out bytes 0          dropped pkts 0          in FECN pkts 0
in BECN pkts 0      out FECN pkts 0 out BECN pkts 0
in DE pkts 0          out DE pkts 0
out bcast pkts 0    out bcast bytes 0
pvc create time 3d04h, last time pvc status changed 00:02:45
```

# Troubleshoot

There is currently no specific troubleshooting information available for this configuration.

---

## Related Information

- **Technical Support: ATM–Frame Relay Interworking**
  - **Frame Relay Forum (FRF) Frame Relay Forum (FRF)** [↗](#)
  - **ATM Technology Support Pages**
  - **Technical Support – Cisco Systems**
- 

[Contacts & Feedback](#) | [Help](#) | [Site Map](#)

© 2008 – 2009 Cisco Systems, Inc. All rights reserved. [Terms & Conditions](#) | [Privacy Statement](#) | [Cookie Policy](#) | [Trademarks of Cisco Systems, Inc.](#)

---

Updated: Nov 15, 2007

Document ID: 10440

---