

Cisco IOS Router to Ascend Access Server

Document ID: 10373

Introduction

Prerequisites

Requirements

Components Used

Conventions

Configure

Network Diagram

Configurations

Verify

Troubleshoot

Troubleshooting Commands

NetPro Discussion Forums – Featured Conversations

Related Information

Introduction

This document provides a sample configuration for a Cisco IOS router dialing into an Ascend router over ISDN. This is set up like regular ISDN with a change to authentication to make it one-way.

Prerequisites

Requirements

Before attempting this configuration, ensure that you meet these requirements:

- The username and password required by the Ascend router for authentication.
- The switch type.
- Service Profile Identifier (SPID) information if it is a Basic Rate Interface (BRI).
- IP address information.

Components Used

This document is not restricted to specific software and hardware versions.

The information in this document was created from the devices in a specific lab environment. All of the devices used in this document started with a cleared (default) configuration. If your network is live, make sure that you understand the potential impact of any command.

Conventions

For more information on document conventions, refer to Cisco Technical Tips Conventions.

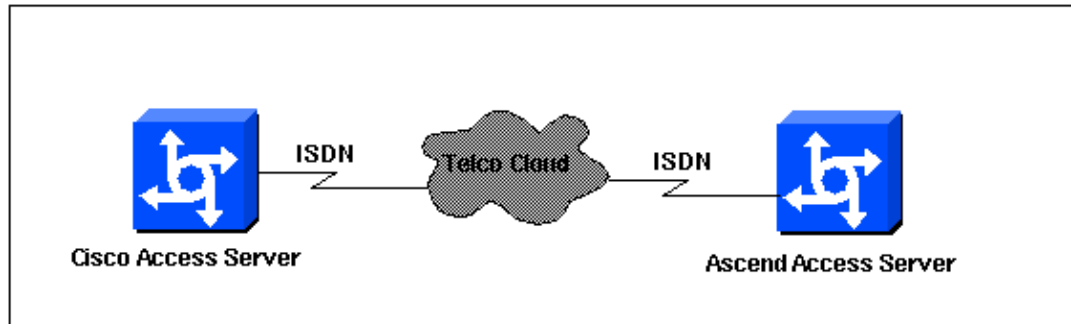
Configure

In this section, you are presented with the information to configure the features described in this document.

Note: To find additional information on the commands used in this document, use the Command Lookup Tool (registered customers only) .

Network Diagram

This document uses this network setup:



Configurations

This document uses these configurations:

Note: The IP Address of the Ascend's Ethernet port is 192.168.214.1

Router 1
<pre>Current configuration: ! version 11.0 ! hostname router1 ! enable password foo ! isdn switch-type basic-dms100 ! interface Ethernet0 ip address 192.168.14.1 255.255.255.0 ! interface Serial0 no ip address shutdown ! interface Serial1 no ip address shutdown ! interface BRI0 ip unnumbered Ethernet0 encapsulation ppp dialer idle-timeout 300 dialer map ip 192.168.214.1 name MAX200 broadcast 5551234 dialer hold-queue 5 dialer load-threshold 100 dialer-group 1 isdn spid1 408555432101 5554321 isdn spid2 408555987601 5559876 ppp authentication pap callin ppp pap sent-username jason password foo ! ip route 192.168.214.1 255.255.255.255 BRI0</pre>

```
ip route 192.168.214.0 255.255.255.0 192.168.214.1
ip route 0.0.0.0 0.0.0.0 192.168.214.1
access-list 100 deny ip 0.0.0.0 255.255.255.255 255.255.255.255 0.0.0.0
access-list 100 permit ip 0.0.0.0 255.255.255.255 0.0.0.0 255.255.255.255
!
dialer-list 1 list 100
!
line con 0
line aux 0
line vty 0 4
password test
login
!
end
```

Verify

There is currently no verification procedure available for this configuration.

Troubleshoot

This section provides information you can use to troubleshoot your configuration.

Troubleshooting Commands

Certain **show** commands are supported by the Output Interpreter Tool (registered customers only) , which allows you to view an analysis of **show** command output.

Note: Before issuing **debug** commands, refer to Important Information on Debug Commands.

- **debug ppp authentication** To see if a client is passing authentication. If you are using a version prior to Cisco IOS software Release 11.2, use the debug ppp chap command instead.
- **debug ppp negotiation** To see if a client is passing Point-to-Point Protocol (PPP) negotiation; this is when you check for address negotiation.
- **debug ppp error** To display protocol errors and error statistics associated with PPP connection negotiation and operation.

NetPro Discussion Forums – Featured Conversations

Networking Professionals Connection is a forum for networking professionals to share questions, suggestions, and information about networking solutions, products, and technologies. The featured links are some of the most recent conversations available in this technology.

NetPro Discussion Forums – Featured Conversations for Access

Network Infrastructure: Remote Access

Related Information

- [Dial Technology Support Pages](#)
- [Technical Support – Cisco Systems](#)

