

ISDN Sample Configuration – Bridging

Document ID: 10216

Introduction

Prerequisites

- Requirements

- Components Used

- Conventions

Configure

- Network Diagram

- Configurations

Verify

Troubleshoot

Related Information

Introduction

This document provides a sample configuration for ISDN bridging.

Note: Bridging can only be configured to one location on an individual basic rate interface (BRI) or primary rate interface (PRI).

Prerequisites

Requirements

There are no specific prerequisites for this document.

Components Used

This document is not restricted to specific software and hardware versions.

The information presented in this document was created from devices in a specific lab environment. All of the devices used in this document started with a cleared (default) configuration. If you are working in a live network, ensure that you understand the potential impact of any command before using it.

Conventions

For more information on document conventions, see the Cisco Technical Tips Conventions.

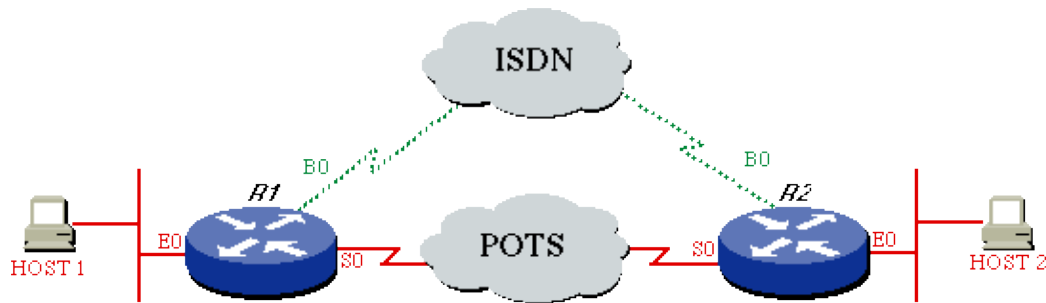
Configure

In this section, you are presented with the information to configure the features described in this document.

Note: To find additional information on the commands used in this document, use the Command Lookup Tool (registered customers only).

Network Diagram

This document uses the network setup shown in the diagram below.



Configurations

This document uses the configurations shown below.

```
Router 1
!
hostname ROUTER1
!
username ROUTER2 password same
isdn switch-type basic-5ess
!
interface Ethernet0
ip address 172.16.55.33 255.255.255.240
!
interface Serial0
ip address 172.16.54.1 255.255.255.0
!
interface BRI0
description ISDN TO ROUTER2
encapsulation ppp
dialer map bridge name ROUTER2 speed 56 5773756
dialer-group 1
bridge-group 1
isdn spid1 0177104130 7710413
ppp authentication chap
!
bridge 1 protocol ieee
!
! Permit all bridged packets
access-list 201 permit 0x0000 0xFFFF
!
dialer-list 1 LIST 201
```

```
Router 2
!
hostname ROUTER2
!
username ROUTER1 password same
isdn switch-type basic-5ess
!
interface Ethernet0
ip address 172.16.55.2 255.255.255.240
!
interface Serial0
ip address 172.16.54.2 255.255.255.0
```

```
!  
interface BRI0  
description ISDN TO ROUTER1  
encapsulation ppp  
dialer map bridge name ROUTER1 speed 56 7710413  
dialer-group 1  
bridge-group 1  
isdn spid1 0157737560 5773756  
ppp authentication chap  
!  
bridge 1 protocol ieee  
!  
! Permit all bridged packets  
access-list 201 permit 0x0000 0xFFFF  
!  
dialer-list 1 LIST 201
```

Verify

There is currently no verification procedure available for this configuration.

Troubleshoot

There is currently no specific troubleshooting information available for this configuration.

Related Information

- [Technical Support – Cisco Systems](#)
- [Dial Technology Support Pages](#)

[Contacts & Feedback](#) | [Help](#) | [Site Map](#)

© 2008 – 2009 Cisco Systems, Inc. All rights reserved. [Terms & Conditions](#) | [Privacy Statement](#) | [Cookie Policy](#) | [Trademarks of Cisco Systems, Inc.](#)

Updated: Nov 15, 2007

Document ID: 10216
