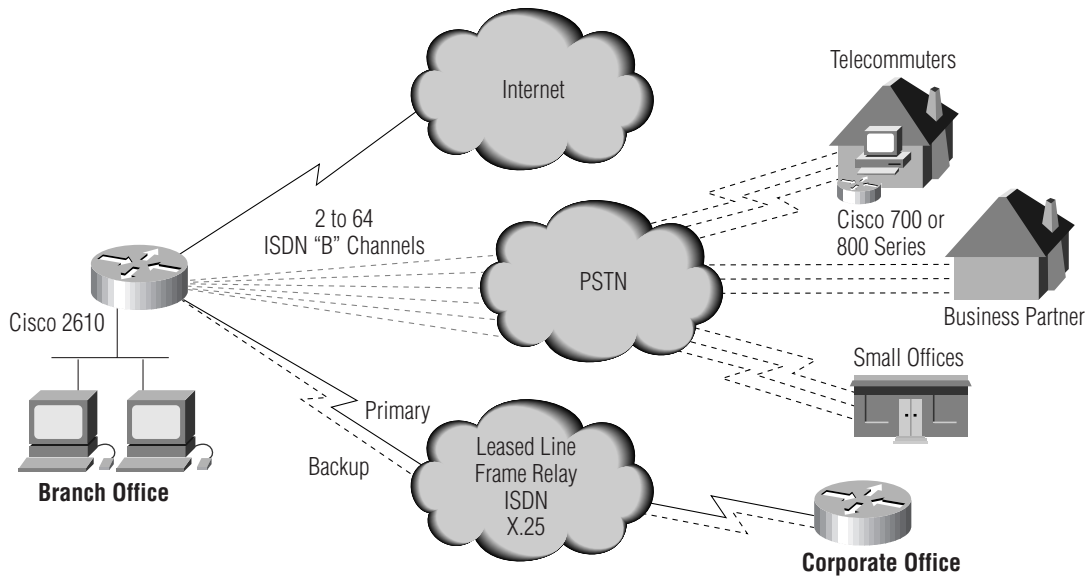


ISDN Concentration Solutions Using the Cisco 2600 Series

ISDN Concentration Solution



Solution Components

- CISC02611
- S26B-xxx
- NM-1CT1-CSU, NM-1CT1, NM-2CT1-CSU, NM-2CT1
- WIC-2T
- WIC-1B-U

ISDN Concentration: 1 Ethernet, 2 T1/E1 Leased Lines, ISDN BRI Backup, 2 ISDN PRI

Cisco IOS® Software Upgrade Options

- S26CH-xxx IP/Firewall
- S26CP-xxx IP Plus
- S26CW-xxx, and S26CL-xxx IP Plus 40, and IPSEC 56
- S26CHL-xxx IP/Firewall Plus IPSEC 56
- S26B-xxx IP/IPX/AT/DEC
- S26BP-xxx IP/IPX/AT/DEC Plus
- S26BHP-xxx IP/IPS/AT/DEC/Firewall Plus
- S26AP-xxx Enterprise Plus
- S26AL-xxx Enterprise Plus IPSEC 56
- S26AHL-xxx Enterprise/Firewall Plus IPSEC 56
- S26ANP-xxx Enterprise APPN/Plus
- S26ANL-xxx Enterprise APPN/Plus IPSEC 56
- S26E-xxx Remote Access Server

Notes: Decide first on the Cisco IOS features you need for a cost effective, secure, scalable end-to-end network. Then choose the platform with the density and performance for current and growth needs. The Cisco 2600 includes IP in the base chassis, the part numbers are upgrades from IP. "xxx" is the Cisco IOS Release such as 12.0 (1)T.

Cisco 2600 Chassis

- CISC02610 One 10BaseT Ethernet, two WIC slots, one NM slot, one AIM slot, AC
- CISC02610-DC -48V DC
- CISC02610-RPS Use w/RPS
- CISC02611 Two 10BaseT Ethernet, two WIC slots, one NM slot, one AIM slot, AC
- CISC02611-DC -48V DC
- CISC02611-RPS Use w/ RPS
- CISC02612 One 10BaseT Ethernet, one Token Ring, two WIC slots, one NM slot, one AIM slot, AC
- CISC02612-DC -48V DC
- CISC02612-RPS Use w/RPS
- CISC02613 One Token Ring, two WIC slots, one NM slot, one AIM slot, AC
- CISC02613-DC -48V DC
- CISC02613-RPS Use w/RPS
- CISC02620 One 10/100BaseT Ethernet, two WIC slots, one NM slot, one AIM slot, AC
- CISC02620-DC -48V DC
- CISC02620-RPS Use w/RPS
- CISC02621 Two 10/100BaseT Ethernet, two WIC slots, one NM slot, one AIM slot, AC
- CISC02621-DC -48V DC
- CISC02621-RPS Use w/RPS

Notes: 8 MB of Flash and 24 MB DRAM included with chassis. Additional memory (not shown) may be required. For example Enterprise Plus requires 8 MB of Flash and 32 MB of DRAM in IOS 12.0 (1)T. If higher performance or density is required consider 3620 @ 20-40 kpps and 3640 @ 50-70 kpps.

Network Modules

- NM-16A 16-Port Async
- NM-32A 32-Port Async
- NM-4A/S Four-port Async/Sync
- NM-8A/S Eight-port Async/Sync
- NM-1V One-slot (1 VIC) Voice/Fax
- NM-2V Two-slot (2 VIC) Voice/Fax
- NM-4B-U, NM-4B-S/T, NM-8B-U, NM-8B-S/T Four- and eight-port ISDN BRI w/ ("U") and w/o ("S/T") NT1
- NM-1CT1-CSU, NM-1CT1, NM-2CT1-CSU, NM-2CT1 One- and two-port Channelized T1/ISDN-PRI w/ and w/o CSU
- NM-8AM, NM-16AM Eight and 16 integrated analog modems
- NM-1CE1B, NM-1CE1U, NM-2CE1B, NM-2CE1U One- and two-port Channelized E1/ISDN-PRI balanced ("B") and unbalanced ("U")
- NM-1ATM-25 One-port ATM-25
- NM-1E One-port Ethernet
- NM-4E Four-port Ethernet

Advanced Integration Modules (AIMs)

- AIM-COMPR2 Data compression AIM for the Cisco 2600

Notes: Network modules shared with the 3620 (2 slots) and 3640 (4 slots). Cables are recommended for the following: NM-16A, NM-32A, NM-4A/S, NM-8A/S, NM-CT1(x), NM-CE1(x)

WAN Interface Cards (WICs)

- WIC-1T One-port T1/E1 serial
- WIC-2T Two-port T1/E1 serial
- WIC-1DSU-56K4 One-port four-wire 56 kbps CSU/DSU
- WIC-1DSU-T1 T1/ Fractional T1 CSU/DSU
- WIC-2A/S Two-port async/sync serial
- WIC-1B-S/T One-port ISDN BRI
- WIC-1B-U One-port ISDN BRI with NT1

Voice Interface Cards (VICs)

- VICs used with NM-1V and NM-2V
- VIC-2E/M Two-port-E&M
- VIC-2FXO Two-port-FXO
- VIC-2FXS Two-port-FXS
- VIC-2BRI-ST-TE Two-port BRI (terminal side)

Redundant Power Systems (RPS)

- PWR600-AC-RPS-NCAB 600W Redundant AC Power System w/o DC Power Cables
- CAB-RPSY-2218 RPS 22/18 Two-to-one DC Power Cable

Notes: Many WICs shared with the 3600 and 1600 series. All VICs shared with 3600. Cables are recommended for the following: WIC-1T, WIC-2T, WIC-2A/S.

ISDN Concentration Solutions Using the Cisco 2600 Series

Overview

ISDN aggregation in branch offices provides telecommuters and small satellite offices with direct connections to corporate intranet resources and to the Internet at higher access speeds (up to 128kbps) than analog dialup. To be cost-effective in remote offices, an ISDN access server must integrate most or all of the networking functionality for that office. It must also have the flexibility to address the office's unique density and bandwidth requirements and be easy to install both locally and remotely.

Solution

With support for up to two PRI interfaces, the Cisco 2600 provides a cost-effective, single-box solution for ISDN concentration in enterprise or service provider networks. Multiple chassis options (single or dual Ethernet, single or dual 10/100BaseT Ethernet, Token Ring, Ethernet/Token Ring) and four slots for modular interfaces allow for tailored solutions and integrate access server and routing functionality in the same unit. Scalable and cost-effective, the Cisco 2600 modular design makes it possible to start small and install or swap additional interfaces as needs grow or change.

Capable of concentrating as many as 64 ISDN B channels, the Cisco 2600 has a high performance RISC-based processor that can handle a full call load at wire speeds. Cisco IOS software features provide security to authenticate users and protect network resources, as well as WAN optimization to conserve bandwidth.

The Cisco 2600 can be cost-effectively installed with minimal training, using local personnel, with Cisco's Enhanced Setup or ConfigMaker. Auto-Install can also be used for automatic configuration via WAN connection back to the central site. Management and monitoring are made easy locally using ConfigMaker or remotely using CiscoWorks and CiscoView.

Features

Benefits

- Aggregation of up to 64 ISDN B channels

- Up to 128 kbps access for telecommuters and small remote offices

- RISC processor-based wire-rate performance

- Solves the increased bandwidth requirements of mobile and telecommuting employees using advanced, Web-based applications

- Shares modular interfaces with Cisco 1600, 1700, and 3600 Series

- Investment protection when scaling to higher performance and densities

- Support for Enhanced Setup, ConfigMaker, Auto-Install, CiscoWorks, and CiscoView.

- Simplified installation and management whether local or remote