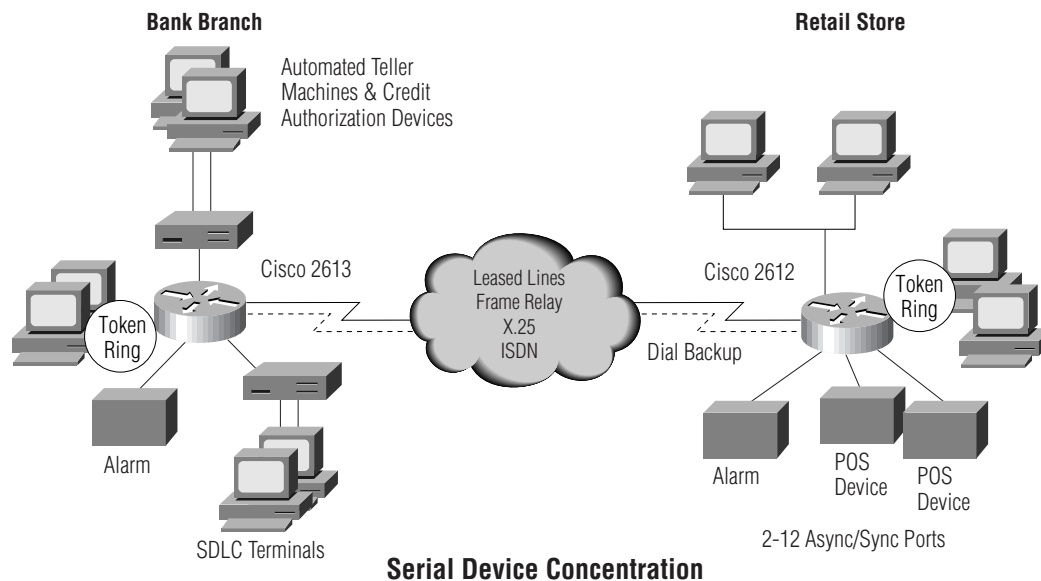


Serial Concentration Solutions Using the Cisco 2600 Series

Serial Concentration Solutions



Serial Device Concentration: Cisco 2600, 1 T1/E1 Leased Line, ISDN Backup, 8 Async/Sync

Cisco IOS® Software Upgrade Options

- S26CH-xxx IP/Firewall
- S26CP-xxx IP Plus
- S26CW-xxx, and S26CL-xxx IP Plus 40, and IPSEC 56
- S26CHL-xxx IP/Firewall Plus IPSEC 56
- S26B-xxx IP/IPX/AT/DEC
- S26BP-xxx IP/IPX/AT/DEC Plus
- S26BHP-xxx IP/IPS/AT/DEC/Firewall Plus
- S26AP-xxx Enterprise Plus
- S26AL-xxx Enterprise Plus IPSEC 56
- S26AHL-xxx Enterprise/Firewall Plus IPSEC 56
- S26ANP-xxx Enterprise APPN/Plus
- S26ANL-xxx Enterprise APPN/Plus IPSEC 56
- S26E-xxx Remote Access Server

Notes: Decide first on the Cisco IOS features you need for a cost effective, secure, scalable end-to-end network. Then choose the platform with the density and performance for current and growth needs. The Cisco 2600 includes IP in the base chassis, the part numbers are upgrades from IP. "xxx" is the Cisco IOS Release such as 12.0 (1)T.

Cisco 2600 Chassis

- CISCO2610 One 10BaseT Ethernet, two WIC slots, one NM slot, one AIM slot, AC
- CISCO2610-DC -48V DC
- CISCO2610-RPS Use w/RPS
- CISCO2611 Two 10BaseT Ethernet, two WIC slots, one NM slot, one AIM slot, AC
- CISCO2611-DC -48V DC
- CISCO2611-RPS Use w/ RPS
- CISCO2612 One 10BaseT Ethernet, one Token Ring, two WIC slots, one NM slot, one AIM slot, AC
- CISCO2612-DC -48V DC
- CISCO2612-RPS Use w/RPS
- CISCO2613 One Token Ring, two WIC slots, one NM slot, one AIM slot, AC
- CISCO2613-DC -48V DC
- CISCO2613-RPS Use w/RPS
- CISCO2620 One 10/100BaseT Ethernet, two WIC slots, one NM slot, one AIM slot, AC
- CISCO2620-DC -48V DC
- CISCO2620-RPS Use w/RPS
- CISCO2621 Two 10/100BaseT Ethernet, two WIC slots, one NM slot, one AIM slot, AC
- CISCO2621-DC -48V DC
- CISCO2621-RPS Use w/RPS

Notes: 8 MB of Flash and 24 MB DRAM included with chassis. Additional memory (not shown) may be required. For example Enterprise Plus requires 8 MB of Flash and 32 MB of DRAM in IOS 12.0 (1)T. If higher performance or density is required consider 3620 @ 20-40 kpps and 3640 @ 50-70 kpps.

Network Modules

- NM-16A 16-Port Async
- NM-32A 32-Port Async
- NM-4A/S Four-port Async/Sync
- NM-8A/S Eight-port Async/Sync
- NM-1V One-slot (1 VIC) Voice/Fax
- NM-2V Two-slot (2 VIC) Voice/Fax
- NM-4B-U, NM-4B-S/T, NM-8B-U, NM-8B-S/T Four- and eight-port ISDN BRI w/ ("U") and w/o ("S/T") NT1
- NM-1CT1-CSU, NM-1CT1, NM-2CT1-CSU, NM-2CT1 One- and two-port Channelized T1/ISDN-PRI w/ and w/o CSU
- NM-8AM, NM-16AM Eight and 16 integrated analog modems
- NM-1CE1B, NM-1CE1U, NM-2CE1B, NM-2CE1U One- and two-port Channelized E1/ISDN-PRI balanced ("B") and unbalanced ("U")
- NM-1ATM-25 One-port ATM-25
- NM-1E One-port Ethernet
- NM-4E Four-port Ethernet

Advanced Integration Modules (AIMs)

- AIM-COMPR2 Data compression AIM for the Cisco 2600

Notes: Network modules shared with the 3620 (2 slots) and 3640 (4 slots). Cables are recommended for the following: NM-16A, NM-32A, NM-4A/S, NM-8A/S, NM-CT1(x), NM-CE1(x)

WAN Interface Cards (WICs)

- WIC-1T One-port T1/E1 serial
- WIC-2T Two-port T1/E1 serial
- WIC-1DSU-56K4 One-port four-wire 56 kbps CSU/DSU
- WIC-1DSU-T1 T1/ Fractional T1 CSU/DSU
- WIC-2A/S Two-port async/sync serial
- WIC-1B-S/T One-port ISDN BRI
- WIC-1B-U One-port ISDN BRI with NT1

Voice Interface Cards (VICs)

- VICs used with NM-1V and NM-2V
- VIC-2E/M Two-port-E&M
- VIC-2FX0 Two-port-FX0
- VIC-2FXS Two-port-FXS

Redundant Power Systems (RPS)

- PWR600-AC-RPS-NCAB 600W Redundant AC Power System w/o DC Power Cables
- CAB-RPSY-2218 RPS 22/18 Two-to-one DC Power Cable

Notes: Many WICs shared with the 3600 and 1600 series. All VICs shared with 3600. Cables are recommended for the following: WIC-1T, WIC-2T, WIC-2A/S.

Serial Concentration Solutions Using the Cisco 2600 Series

Overview

Many financial institutions and retail establishments have networked legacy synchronous and asynchronous devices in remote locations. Examples of these serial devices are SDLC concentrators connected to legacy terminals, alarm systems, Automated Teller Machines, and point-of-sale (POS) devices. These establishments also have LAN-connected personal computers that access remote services. A multiprotocol router enables these devices to communicate among themselves as well as access remote client-server applications. Concentrating serial devices and LAN-based PCs in a single manageable platform eliminates costly dial-up BSC links and permits a single network connection. Remote management is improved since only one network management tool is needed. Network reliability for mission critical devices is enhanced via dynamic routing capabilities.

Solution

The Cisco 2600 provides a cost-effective, flexible solution for concentrating serial devices in the branch office. Async/sync ports provide connections to serial devices such as teller terminal concentration devices, alarm systems, ATMs, debit/credit terminals and cash registers. With full Cisco IOS protocol support including SDLC, BSC, BSTUN, STUN, X.25, Frame Relay, and polled async, the Cisco 2600 supports a wide variety of serial concentration applications. In the preceding figure, a Cisco 2613 deployed in a bank branch office connects the existing Token Ring LAN and up to 8 serial devices to the corporate network. The Cisco 2612 in a retail store provides an integrated solution for connecting Ethernet and Token Ring LANs in addition to multiple point-of-sale devices. Whether your application requires the compact two port async/sync WIC or the high density async/sync network modules, each port can be individually configured for synchronous or asynchronous operation. This configuration also supports software-based compression or encryption and is ready to accept an AIM card for even higher performance hardware-based compression or, in the future, hardware-based encryption. Stacking the Cisco 2600 Series with Cisco LAN switches such as the Catalyst 1900, 2820, and 2900XL Series enables network administrators to manage branch office environments efficiently using CiscoWorks and CiscoView network management solutions.

Features

Benefits

- High and low density (2 to 12 ports) asynchronous/synchronous modules

- Efficient, cost-effective configurations supporting multiple device types

- Token Ring; single and dual Ethernet; single and dual 10/100BaseT Ethernet; and combination Token Ring and Ethernet chassis availability

- Choice of LAN configurations can be customized for numerous environments

- Serial, integrated CSU/DSU, and BRI connection solutions

- Wide array of WAN access capabilities to meet any set of requirements

- Market leading legacy and multiprotocol support

- Diverse and extensive protocol support addresses almost any network requirement

- Shares modular interfaces with Cisco 1600, 1700, and Cisco 3600 series

- Investment protection when scaling to higher performance and densities

- Voice/Data/Fax integration capabilities upgrade path

- Eliminates “forklift upgrades” and provides for future branch office toll charge reduction