

Cisco语音门户(CVP) SIP邀请方法汇总

Contents

[Introduction](#)

[Prerequisites](#)

[Requirements](#)

[Components Used](#)

[Configure](#)

[呼叫流](#)

1. [流入呼叫段确定SIP邀请交互语音回应\(VRU\)段用途](#)
2. [对于铃音段， CVP总是使用SIP延迟offer](#)
3. [CVP呼叫服务器paramter sip.earlyoffer.support影响仅座席呼叫段](#)
4. [CVP发送SIP早提供邀请到在座席呼叫段的CUCM必须符合这三个情况：](#)
5. [当耳语启用了， CVP用途及早提供发送再邀请到入口段，除了](#)
6. [如果入口网关用途及早提供，当连接到代理程序时， CVP发送两次再邀请到入口网关](#)

[摘要](#)

Introduction

本文描述Cisco语音门户的方法(CVP)用途，当请发送为不同的呼叫段邀请的会话初始化协议(SIP)时。

Prerequisites

Requirements

There are no specific requirements for this document.

Components Used

Cisco Unified Contact Center Enterprise (UCCE) 11.6

CVP 11.6

Cisco虚拟化语音浏览器(VVB) 11.6

Configure

呼叫流

在实验室里，请使用comphresive呼叫流测试。

1. [流入呼叫段确定SIP邀请交互语音回应\(VRU\)段用途](#)

当流入段使用SIP早提供对CVP时，然后CVP发送SIP在VRU段的早提供。

2. 对于铃音段，CVP总是使用SIP延迟offer

在CVP收到代理程序标签后，总是CVP使用发送SIP的延迟提供在铃音段邀请。

3. CVP呼叫服务器parameter sip.earlyoffer.support影响仅座席呼叫段

在CVP呼叫服务器中，C:\Cisco\CVP\conf\sip.properties，参数SIP.EarlyOfferSupport可以是ture或错误的。

默认情况下，此值是真的：

```
SIP.EarlyOfferSupport = true
```

4. CVP发送SIP早提供邀请到在座席呼叫段的CUCM必须符合这三个情况：

- a. 对CVP的入口呼叫段用途SIP早期的提供invite
- b. SIP.EarlyOfferSupport =真
- c. 没有被启用的耳语

Note:如果这些情况没有符合，CVP用途SIP发送的延迟提供为座席呼叫段邀请。

5. 当耳语启用了，CVP用途及早提供发送再邀请到入口段，除了

当耳语是启用的时，CVP用途延迟提供发送再邀请到入口段，当CVP连接入口网关到代理程序时。

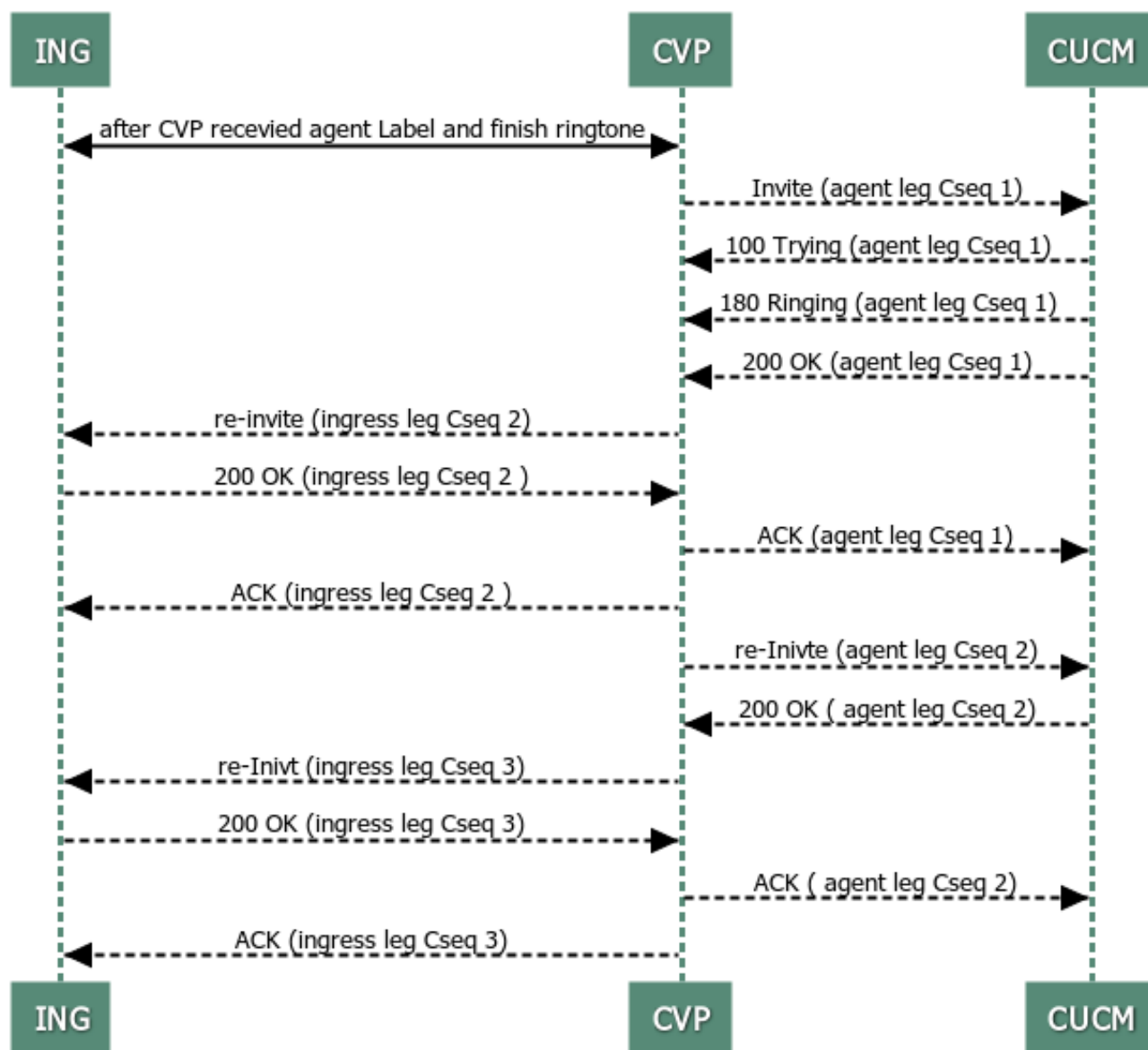
其他再邀请到入口网关，CVP用途及早提供。

6. 如果入口网关用途及早提供，当连接到代理程序时，CVP发送两次再邀请到入口网关

这发生，当入口网关使用early提供如此镜像所显示，并且连接到代理程序。

当入口网关用途延迟提供时，CVP发送一再invite到入口网关。

Ingress gateway use early offer



摘要

如此镜像所显示，汇总SIP邀请方法：

Comprehensive Call flow

sip.earlyoffer.support=True

Initial Call Dely Offer			Initial Call Early Offer		
	VRU leg	delay offer		VRU leg	early offer
Inivte	Ring Tone Leg	delay offer	Inivte	Ring Tone Leg	delay offer
	Agent Leg	delay offer		Agent Leg	early offer
	connect Ring Tone	early offer		connect Ring Tone	early offer
re-inivte			re-inivte		
	Connect Agent	early offer		Connect Agent	early offer

sip.earlyoffer.support=false

Initial Call Dely Offer			Initial Call Early Offer		
	VRU leg	delay offer		VRU leg	early offer
Inivte	Ring Tone Leg	delay offer	Inivte	Ring Tone Leg	delay offer
	Agent Leg	delay offer		Agent Leg	delay offer
	connect Ring Tone	early offer		connect Ring Tone	early offer
re-inivte			re-inivte		
	Connect Agent	early offer		Connect Agent	early offer

Comprehensive Call flow with Whisper enabled

sip.earlyoffer.support=True

Initial Call Dely Offer			Initial Call Early Offer		
	VRU leg	delay offer		VRU leg	early offer
Inivte	Ring Tone Leg	delay offer	Inivte	Ring Tone Leg	delay offer
	Agent Leg	delay offer		Agent Leg	delay offer
	Whisper Leg	early offer		Whisper Leg	early offer
	incoming leg connect Ring tone	early offer		incoming leg connect Ring tone	early offer
	incoming leg connect Agent	delay offer		incoming leg connect Agent	delay offer
re-inivte			re-inivte		
	agent leg connect to ingress	early offer		agent leg connect to ingress	early offer

sip.earlyoffer.support=false

Initial Call Dely Offer			Initial Call Early Offer		
	VRU leg	delay offer		VRU leg	early offer
Inivte	Ring Tone Leg	delay offer	Inivte	Ring Tone Leg	delay offer
	Agent Leg	delay offer		Agent Leg	delay offer
	Whisper Leg	early offer		Whisper Leg	early offer
	incoming leg connect Ring tone	early offer		incoming leg connect Ring tone	early offer
	incoming leg connect Agent	delay offer		incoming leg connect Agent	delay offer
re-inivte			re-inivte		
	agent leg connect to ingress	early offer		agent leg connect to ingress	early offer