



Cisco Configuration Professional Express 2.8 Administration Guide

First Published: November 22, 2013

Cisco Systems, Inc.

www.cisco.com

Cisco has more than 200 offices worldwide. Addresses, phone numbers, and fax numbers are listed on the Cisco website at www.cisco.com/go/offices.

Text Part Number: OL-27272-02

THE SPECIFICATIONS AND INFORMATION REGARDING THE PRODUCTS IN THIS MANUAL ARE SUBJECT TO CHANGE WITHOUT NOTICE. ALL STATEMENTS, INFORMATION, AND RECOMMENDATIONS IN THIS MANUAL ARE BELIEVED TO BE ACCURATE BUT ARE PRESENTED WITHOUT WARRANTY OF ANY KIND, EXPRESS OR IMPLIED. USERS MUST TAKE FULL RESPONSIBILITY FOR THEIR APPLICATION OF ANY PRODUCTS.

THE SOFTWARE LICENSE AND LIMITED WARRANTY FOR THE ACCOMPANYING PRODUCT ARE SET FORTH IN THE INFORMATION PACKET THAT SHIPPED WITH THE PRODUCT AND ARE INCORPORATED HEREIN BY THIS REFERENCE. IF YOU ARE UNABLE TO LOCATE THE SOFTWARE LICENSE OR LIMITED WARRANTY, CONTACT YOUR CISCO REPRESENTATIVE FOR A COPY.

The Cisco implementation of TCP header compression is an adaptation of a program developed by the University of California, Berkeley (UCB) as part of UCB's public domain version of the UNIX operating system. All rights reserved. Copyright © 1981, Regents of the University of California.

NOTWITHSTANDING ANY OTHER WARRANTY HEREIN, ALL DOCUMENT FILES AND SOFTWARE OF THESE SUPPLIERS ARE PROVIDED "AS IS" WITH ALL FAULTS. CISCO AND THE ABOVE-NAMED SUPPLIERS DISCLAIM ALL WARRANTIES, EXPRESSED OR IMPLIED, INCLUDING, WITHOUT LIMITATION, THOSE OF MERCHANTABILITY, FITNESS FOR A PARTICULAR PURPOSE AND NONINFRINGEMENT OR ARISING FROM A COURSE OF DEALING, USAGE, OR TRADE PRACTICE.

IN NO EVENT SHALL CISCO OR ITS SUPPLIERS BE LIABLE FOR ANY INDIRECT, SPECIAL, CONSEQUENTIAL, OR INCIDENTAL DAMAGES, INCLUDING, WITHOUT LIMITATION, LOST PROFITS OR LOSS OR DAMAGE TO DATA ARISING OUT OF THE USE OR INABILITY TO USE THIS MANUAL, EVEN IF CISCO OR ITS SUPPLIERS HAVE BEEN ADVISED OF THE POSSIBILITY OF SUCH DAMAGES.

Cisco and the Cisco logo are trademarks or registered trademarks of Cisco and/or its affiliates in the U.S. and other countries. To view a list of Cisco trademarks, go to this URL: www.cisco.com/go/trademarks. Third-party trademarks mentioned are the property of their respective owners. The use of the word partner does not imply a partnership relationship between Cisco and any other company. (1110R)

Cisco Configuration Professional Express

Any Internet Protocol (IP) addresses and phone numbers used in this document are not intended to be actual addresses and phone numbers. Any examples, command display output, network topology diagrams, and other figures included in the document are shown for illustrative purposes only. Any use of actual IP addresses or phone numbers in illustrative content is unintentional and coincidental.



Preface	v
Audience	v
Purpose	v
Conventions	v
Obtaining Documentation and Submitting a Service Request	vi

CHAPTER 1

Introduction	1-1
Overview	1-1
Accessing the Cisco CP Express Video	1-1
Prerequisites	1-1
Software Requirements	1-1
Memory Requirements	1-2
Cisco CP Express Admin View	1-2
Cisco CP Express End User View	1-2
Supported Routers	1-2
Supported HWIC Cards	1-10
Supported Browsers	1-11

CHAPTER 2

Installing and Setting Up Cisco CP Express Admin View	2-1
Downloading Cisco CP Express Admin View	2-1
Installing Cisco CP Express Admin View	2-1
Using Cisco CP Express Admin View	2-3
Prerequisites	2-3
Enabling HTTP Server or Secure Server	2-3
Launching Cisco CP Express Admin View	2-4
Prerequisite	2-4
Procedure	2-4

CHAPTER 3

Installing and Setting Up Cisco CP Express End User View	3-1
Downloading Cisco CP Express End User View	3-1
Customizing the Logo (Optional)	3-1
Installing Cisco CP Express End User View	3-2

Before you Begin 3-2

Procedure 3-2

Setting Up Wireless Access on Cisco CP Express End User View 3-4

Creating a Cisco CP Express End User View 3-4

Deleting a Cisco CP Express End User View 3-5

CHAPTER 4

Accessing the Wireless Interface 4-1

CHAPTER 5

Uninstalling and Upgrading Cisco CP Express Admin View 5-1

Uninstalling Cisco CP Express Admin View 5-1

Upgrading Cisco CP Express Admin View to a Later Version 5-2

Retrieving Lost or Misplaced Files 5-2

CHAPTER 6

Uninstalling and Upgrading Cisco CP Express End User View 6-1

Uninstalling Cisco CP Express End User View 6-1

Upgrading Cisco CP Express End User View to a Later Version 6-2

Retrieving Lost or Misplaced Files 6-2



Preface

This guide describes how to install, configure, and use the Cisco Configuration Professional Express (Cisco CP Express).

Audience

This guide is for network administrators who use the Cisco CP Express Admin View. Administrators can also use this guide to configure and set up the Cisco CP Express End User View.

Purpose

The purpose of this guide is to help administrators get started with the Cisco CP Express. It consists of these chapters:

- [Introduction, page 1-1](#)
- [Installing and Setting Up Cisco CP Express Admin View, page 2-1](#)
- [Installing and Setting Up Cisco CP Express End User View, page 3-1](#)
- [Accessing the Wireless Interface, page 4-1](#)
- [Uninstalling and Upgrading Cisco CP Express Admin View, page 5-1](#)
- [Uninstalling and Upgrading Cisco CP Express End User View, page 6-1](#)

Conventions

This document uses these conventions:

Convention	Indication
bold font	Commands, keywords, and user-entered text appear in bold font .
<i>italic font</i>	Document titles, new or emphasized terms, and arguments for which you supply values are in <i>italic font</i> .
[]	Elements in square brackets are optional.

{ x y z }	Required alternative keywords are grouped in braces and separated by vertical bars.
[x y z]	Optional alternative keywords are grouped in brackets and separated by vertical bars.
string	A nonquoted set of characters. Do not use quotation marks around the string, or the string will include the quotation marks.
<code>courier font</code>	Terminal sessions and information the system displays appear in <code>courier font</code> .
< >	Nonprinting characters such as passwords are in angle brackets.
[]	Default responses to system prompts are in square brackets.
!, #	An exclamation point (!) or a pound sign (#) at the beginning of a line of code indicates a comment line.



Note

Means *reader take note*.



Tip

Means *the following information will help you solve a problem*.



Caution

Means *reader be careful*. In this situation, you might perform an action that could result in equipment damage or loss of data.



Timesaver

Means *the described action saves time*. You can save time by performing the action described in the paragraph.



Warning

Means *reader be warned*. In this situation, you might perform an action that could result in bodily injury.

Obtaining Documentation and Submitting a Service Request

For information on obtaining documentation, submitting a service request, and gathering additional information, see the monthly *What's New in Cisco Product Documentation*, which also lists all new and revised Cisco technical documentation, at:

<http://www.cisco.com/en/US/docs/general/whatsnew/whatsnew.html>

Subscribe to the *What's New in Cisco Product Documentation* as a Really Simple Syndication (RSS) feed and set content to be delivered directly to your desktop using a reader application. The RSS feeds are a free service and Cisco currently supports RSS version 2.0.



Introduction

Overview

The Cisco Configuration Professional Express (Cisco CP Express) is an embedded, device-management tool that provides the ability to configure bootstrap configuration and provision an Integrated Services Router (ISR).

The Cisco CP Express supports these views:

- Cisco CP Express Admin View—Administrators use the Admin View for router administrative tasks such as setting up WAN uplinks, creating Virtual Local Area Networks (VLAN), IP routes, users, Dynamic Host Configuration Protocol (DHCP), and so on.
- Cisco CP Express End User View—Administrators must set up the End User View so that users can access it to associate switch ports to VLANs, and to create new Service Set Identifiers (SSID) for wireless interfaces.

Accessing the Cisco CP Express Video

The Cisco CP Express video explains the features and functionality in this release of the Cisco CP Express. You can access the Cisco CP Express video at http://www.cisco.com/en/US/docs/net_mgmt/cisco_configuration_professional_express/v2_7/guides/adminguide/CCPEXpress.html.

Prerequisites

Software Requirements

For Cisco CP Express to be fully functional, you will need Cisco IOS Software Release 15.2.4M2 in M trains and 15.3.1T in T trains or later for all SKUs.

Memory Requirements

Cisco CP Express Admin View

To install the Cisco CP Express Admin View, you must have at least 4 MB of free space on the flash memory of the router. This space is required to hold the compressed *ccpexpressAdmin28.tar* file, in addition to the host folder and extracted files.

[Table 1](#) lists the Cisco CP Express Admin View files, and the minimum memory required to support them.

Table 1 Cisco CP Express Admin View File List

File/Folder Name	Size	Description
ccpexpressAdmin28.tar	Approximately 1.8 MB on the router flash	Cisco CP Express Admin View application file
ccpExpress_ap_express-security.shtml.gz	Approximately 100 KB on the flash of the Wireless Access Point (WAP)	Cisco CP Express Admin View support file

Cisco CP Express End User View

To install the Cisco CP Express End User View, you must have at least 4 MB of free space on the flash memory of the router. This space is required to hold the compressed *ccpexpressEndUser28.tar* file, in addition to the host folder and extracted files.

[Table 2](#) lists the Cisco CP Express End User View files, and the minimum memory required to support them.

Table 2 Cisco CP Express End User View File List

File/Folder Name	Size	Description
ccpexpressEndUser28.tar	Approximately 1.5 MB on the router flash	Cisco CP Express End User View application file
ccpExpressEU_ap_express-security.shtml.gz	Approximately 100 KB on the flash of the WAP	Cisco CP Express End User View support file

Supported Routers

[Table 3](#) lists the routers that Cisco CP Express supports.

Table 3 **Supported Routers****Supported Routers****Cisco 812 Series**

C812G+7-K9

C812G-CIFI+7-E-K9

C812G-CIFI+7-N-K9

C812G-CIFI-V-A-K9

C812G-CIFI-S-A-K9

Cisco 815 Series

CISCO815

CISCO815-VPN-K9

Cisco 819 Series

C819HGW+7-E-K9

C819HGW+7-N-K9

C819HGW+7-A-A-K9

C819HGW-V-A-K9

C819HGW-S-A-K9

C819H-K9

C819HWD-E-K9

C819HWD-A-K9

C819HG-4G-V-K9

C819HG-4G-A-K9

C819HG-4G-G-K9

C819G-4G-V-K9

C819G-4G-A-K9

C819G-4G-G-K9

Cisco 851 Series

CISCO851-K9

CISCO851W-G-A-K9

CISCO851W-G-E-K9

CISCO851W-G-J-K9

Cisco 857 Series

CISCO857-K9

CISCO857W-G-A-K9

CISCO857W-G-E-K9

Cisco 861 Series

Supported Routers

CISCO861-K9

CISCO861W-GN-A-K9

CISCO861W-GN-E-K9

CISCO861W-GN-P-K9

Cisco 866 Series

CISCO866VAE-W-E-K9

Cisco 867 Series

CISCO867VAE-K9

CISCO867-K9

CISCO867VA-K9

CISCO867W-GN-A-K9

CISCO867W-GN-E-K9

CISCO867VAE-W-A-K9

CISCO867VAE-W-E-K9

CISCO867VAE-POE-W-A-K9

Cisco 871 Series

CISCO871-K9

CISCO871W-G-A-K9

CISCO871W-G-E-K9

CISCO871W-G-J-K9

Cisco 876 Series

CISCO876-K9

CISCO876W-G-E-K9

Cisco 877 Series

CISCO877-K9

CISCO877-M-K9

CISCO877W-G-A-K9

CISCO877W-G-E-K9

CISCO877W-G-E-M-K9

Cisco 878 Series

CISCO878-K9

CISCO878W-G-A-K9

CISCO878W-G-E-K9

Cisco 881 Series

Supported Routers

CISCO881-K9
CISCO881-PCI-K9
CISCO881-SEC-K9
C881W-A-K9
C881W-P-K9
C881-V-K9
C881GW+7-A-K9
C881GW+7-E-K9
C881GW-S-A-K9
C881GW-V-A-K9
C881WD-A-K9
C881WD-E-K9
CISCO881W-GN-A-K9
CISCO881W-GN-E-K9
CISCO881W-GN-P-K9
CISCO881W-A-K9
CISCO881W-E-K9
CISCO881G-K9
CISCO881GW-GN-A-K9
CISCO881GW-GN-E-K9
CISCO881G-S-K9
CISCO881G-V-K9
CISCO881G-A-K9
C881G-U-K9
C881G-S-K9
C881G-V-K9
C881G-B-K9
C881G+7-K9
C881G+7-A-K9
C881SRST-K9
C881SRSTW-GN-A-K9
C881SRSTW-GN-E-K9

Cisco 886 Series

Supported Routers

CISCO886-K9
CISCO886G-K9
CISCO886VA-K9
C886VA-W-E-K9
C886VAG+7-K9
CISCO886GW-GN-E-K9

Cisco 887 Series

C887VA-V-K9
C887VA-W-A-K9
C887VAG-S-K9
C887VAGW+7-A-K9
C887VAGW+7-E-K9
C887VA-WD-A-K9
C887VA-WD-E-K9
CISCO887-K9
CISCO887VA-K9
CISCO887VA-M-K9
C887VA-W-A-K9
C887VA-W-E-K9
C887VAM-W-E-K9
C887VAG-S-K9
C887VAG+7-K9
C887VAMG+7-K9
CISCO887W-GN-A-K9
CISCO887W-GN-E-K9
CISCO887M-K9
CISCO887MW-GN-E-K9
CISCO887G-K9
CISCO887GW-GN-A-K9
CISCO887GW-GN-E-K9
CISCO887V-K9
CISCO887VW-GNA-K9
CISCO887VW-GNE-K9
CISCO887VG-K9
CISCO887VGW-GNA-K9
CISCO887VGW-GNE-K9

Supported Routers

Cisco 888 Series

CISCO888-K9
CISCO888-SEC-K9
CISCO888W-GN-E-K9
CISCO888E-K9
CISCO888EW-GNE-K9
C888EA-K9
C888SRST-K9
C888ESRST-K9
C888ESRSTW-GNA-K9
C888ESRSTW-GNE-K9
CISCO888-K9
CISCO888W-GN-A-K9
CISCO888W-GN-E-K9
CISCO888E-K9
CISCO888EW-GN-A-K9
CISCO888EW-GN-E-K9
CISCO888G-K9
CISCO888GW-G-NA-K9
CISCO888GW-G-NE-K9
C888EG+7-K9
C888SRST-K9
C888SRSTW-GN-A-K9
C888SRSTW-GN-E-K9

Cisco 891 Series

CISCO891W-AGN-A-K9
CISCO891W-AGN-C-K9
CISCO891W-AGN-N-K9
CISCO891-K9

Cisco 892 Series

Supported Routers

CISCO892J-K9

CISCO892FW-A-K9

CISCO892W-AGN-P-K9

C892FSP-K9

CISCO892-K9

CISCO892F-K9

CISCO892W-AGN-E-K9

Cisco 896

C896VA-K9

Cisco 897

C897VA-K9

C897VAW-A-K9

C897VAW-E-K9

C897VA-M-K9

C897VAM-W-E-K9

Cisco 898

C898EA-K9

Cisco 1801

CISCO1801

CISCO1801/K9

CISCO1801-M

CISCO1801-M/K9

CISCO1801W-AG-B/K9

CISCO1801W-AG-C/K9

CISCO1801W-AG-N/K9

CISCO1801WM-AGB/K9

Cisco 1802

CISCO1802

CISCO1802/K9

Cisco 1803

CISCO1803/K9

CISCO1803W-AG-B/K9

CISCO1803W-AG-E/K9

Cisco 1805

CISCO1805-D

CISCO1805-D/K9

CISCO1805-EJ

Supported Routers

Cisco 1811

CISCO1811/K9

CISCO1811W-AG-B/K9

CISCO1811W-AG-C/K9

CISCO1811W-AG-N/K9

Cisco 1812

CISCO1812/K9

CISCO1812-J/K9

CISCO1812 W-AG-C/K9

CISCO1812W-AG-P/K9

Cisco 1841

CISCO1841

Cisco 1861

CISCO1861-SRST-B/K9

CISCO1861-SRST-C-B/K9

CISCO1861-SRST-C-F/K9

CISCO1861-SRST-F/K9

CISCO1861-UC-2BRI-K9

CISCO1861-UC-4FXO-K9

CISCO1861E-SRST-B/K9

CISCO1861E-SRST-C-B/K9

CISCO1861E-SRST-C-F/K9

CISCO1861E-SRST-F/K9

CISCO1861E-UC-2BRI-K9

CISCO1861E-UC-4FXO-K9

CISCO1861W-SRST-C-B/K9

CISCO1861W-SRST-C-F/K9

CISCO1861W-SRST-B/K9

CISCO1861W-SRST-F/K9

CISCO1861W-UC-2BRI-K9

CISCO1861W-UC-4FXO-K9

Cisco 1902

CISCO1902/K9

Cisco 1905

Cisco1905/K9

Cisco 1921

Supported Routers

Cisco1921/K9

Cisco 1921DC/K9

Cisco 1941

Cisco 1941/K9

Cisco1941W-A/K9

Cisco1941W-E/K9

Cisco1941W-P/K9

Cisco1941W-N/K9

Cisco1941W-C/K9

Cisco 2800 Series

CISCO2801

CISCO2811

CISCO2821

CISCO2851

Cisco 2900 Series

CISCO2901/K9

CISCO2911/K9

CISCO2921/K9

CISCO2951/K9

Cisco 3800 Series

CISCO3825

CISCO3825-NOVPN

CISCO3845

CISCO3845-NOVPN

Cisco 3900 Series

CISCO3925/K9

CISCO3925E/K9

CISCO3945/K9

CISCO3945E/K9

Supported HWIC Cards

[Table 4](#) lists the HWIC cards that Cisco CP Express supports.

Table 4 **Supported HWIC Cards**

HWIC Cards

EHWIC-VA-DSL-A
HWIC-4SHDSL
EHWIC-VA-DSL-M
HWIC-2SHDSL
HWIC-3G-GSM
HWIC-3G-CDMA-V
HWIC-3G-CDMA- Global
HWIC-3G-CDMA-S
EHWIC-3G-EVDO-V
EHWIC-3G-EVDO-B
EHWIC-3G-HSPA+7
EHWIC-4G-LTE-V

Supported Browsers

Cisco CP Express is supported on these browsers:

- Mozilla Firefox 10, or later
- Google Chrome 17, or later
- Internet Explorer 10 only



Installing and Setting Up Cisco CP Express Admin View

This chapter contains these sections:

- [Downloading Cisco CP Express Admin View, page 2-1](#)
- [Installing Cisco CP Express Admin View, page 2-1](#)
- [Using Cisco CP Express Admin View, page 2-3](#)

Downloading Cisco CP Express Admin View

To download Cisco CP Express Admin View, perform these steps:

-
- Step 1** Launch the browser, and go to <http://software.cisco.com/download/release.html?i=!y&mdfid=281795035&softwareid=282159854&release=2.8&os>
- Step 2** When a login page appears, enter your login credentials and click **Log In**. If you do not have login credentials, register and obtain login credentials. Click **Register** (at the top of the page) to complete the registration process, and then return to this page. The Download Software page displays.
- Step 3** From the Download Software page, choose the release to download.
- Step 4** Select the **Cisco Configuration Professional Express 2.8** package link and click **Download** to download the compressed file, *cisco-config-pro-exp-admin-k9-2_8-en.zip* to the system. This compressed file contains the Cisco CP Express Admin View installation files.

Installing Cisco CP Express Admin View

To install the Cisco CP Express Admin View on the router's flash memory, perform these steps:

-
- Step 1** Download the compressed file, *cisco-config-pro-exp-admin-k9-2_8-en.zip* from <http://software.cisco.com/download/release.html?i=!y&mdfid=281795035&softwareid=282159854&release=2.8&os>

- Step 2** Extract the compressed file, *cisco-config-pro-exp-admin-k9-2_8-en.zip* file into the system. The *cisco-config-pro-exp-admin-k9-2_8-en.zip* file contains these files: *ccpexpressAdmin28.tar* and *ccpExpress_ap_express-security.shtml.gz*.
- Step 3** Using an FTP or TFTP server, copy the extracted files onto the router's flash memory.
- ```
router> enable
Password: password
router# copy tftp: flash
```
- Step 4** Specify the IP address of the FTP or TFTP server, as shown in this example:
- ```
Address or name of remote host []? <xxx.xxx.xxx.xxx>
where xxx.xxx.xxx.xxx is the IP address of the FTP or TFTP server.
```
- Step 5** Specify the name of the source file that is to be copied onto the router's flash memory, as shown in this example:
- ```
Source filename []? ccpexpressAdmin28.tar
```
- Step 6** Specify the name of the destination file, as shown in this example:
- ```
Destination file name []? ccpexpressAdmin28.tar
```
- Step 7** Extract the *ccpexpressAdmin28.tar* file onto the router's flash memory, as shown in this example:
- ```
router# archive tar /xtract flash:ccpexpressAdmin28.tar flash:/
```
- Step 8** If the router supports a wireless configuration, configure it, thus:
- Telnet to the WAP of the router, as shown in this example:
 

```
ap#> enable
Password: password
```
  - Verify that the *ccpExpress\_ap\_express-security.shtml.gz* file already exists on the "ap-801-" or "ap802-" folder of the wireless flash memory, as shown in this example:
 

```
ap# cd ap802-xxxxx-xx.xxx-xxx.xxx/html/level/15/
ap# dir
```
- 
- Note** By default, the *ccpExpress\_ap\_express-security.shtml.gz* file is available on some versions of the IOS AP.
- 
- If the *ccpExpress\_ap\_express-security.shtml.gz* file is not available on the wireless flash memory, proceed with [Step d](#). Otherwise, skip to [Step 9](#).
  - Copy the *ccpExpress\_ap\_express-security.shtml.gz* file to the wireless flash, as shown in this example:
 

```
ap# copy tftp: flash
```
- 
- Note** Ensure that you copy the *ccpExpress\_ap\_express-security.shtml.gz* file to that folder with a name beginning with the prefix "ap-801-" or "ap802-", and ensure that this folder contains the *html/level/15/* sub-directories under it.
- 
- Specify the IP address of the FTP or TFTP server, as shown in this example:
 

```
Address or name of remote host []? <xxx.xxx.xxx.xxx>
where xxx.xxx.xxx.xxx is the IP address of the FTP or TFTP server.
```
  - Specify the name of the source file that is to be copied onto the router's flash memory, as shown in this example:

```
Source filename []? ccpExpress_ap_express-security.shtml.gz
```

- g. Specify the name of the destination file, as shown in this example:

```
Destination file name []? ccpExpress_ap_express-security.shtml.gz
```

- Step 9** After the installation is complete, delete the *ccpexpressAdmin28.tar* file from the flash memory of the router, as shown in this example:

```
router# delete flash:ccpexpressAdmin28.tar
```

- Step 10** Press **Return** to confirm the deletion.
- 

## Using Cisco CP Express Admin View

This section contains the following:

- [Prerequisites, page 2-3](#)
- [Enabling HTTP Server or Secure Server, page 2-3](#)
- [Launching Cisco CP Express Admin View, page 2-4](#)

## Prerequisites

Before you launch the Cisco CP Express Admin View, gather the following information from your service provider:

1. Virtual Channel Identifier (VCI) and Virtual Path Identifier (VPI) values if you use Asymmetric Digital Subscriber Line (ADSL) as a Wide Area Network (WAN)
2. Username and password to access the Password Authentication Protocol (PAP) or Challenge Handshake Authentication Protocol (CHAP) if you use ADSL as a WAN
3. (Optional) Primary and secondary DNS IP addresses
4. IP subnet
5. DHCP pool network

## Enabling HTTP Server or Secure Server

Cisco CP Express can be accessed in one of these two modes:

- Secure mode—Uses HTTPS and requires HTTP Secure Server to be enabled on the router.
- Non-Secure mode—Uses HTTP and requires HTTP Server to be enabled on the router.



### Note

By default, the HTTP and secure server are enabled for factory fresh routers.

You must enable HTTP or HTTPS before launching the Cisco CP Express.

The login to the http service must point to the local database on the router, because the Cisco CP Express End User View is configured locally on the router.

1. To configure the router as an http server, execute this command:

```
router(config)# ip http server
```

2. To configure the router as an https server, execute this command:

```
router(config)# ip http secure-server
```

## Launching Cisco CP Express Admin View

### Prerequisite

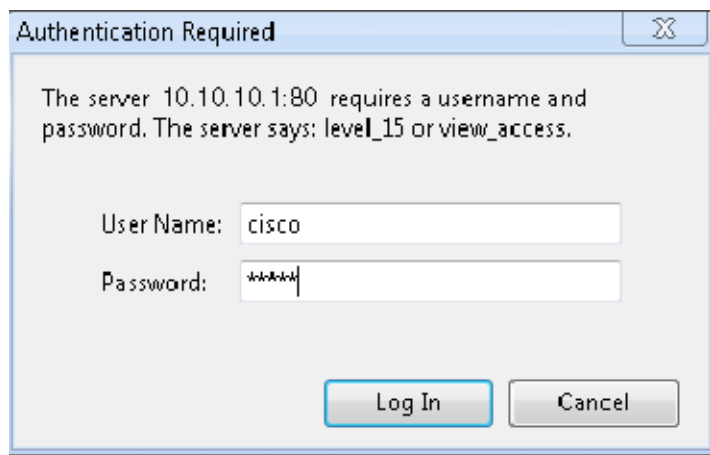
Before you proceed with launching the Cisco CP Express Admin View, you must complete tasks detailed in the [Cisco CP Express Quick Start Guide](#).

### Procedure

To launch the Cisco CP Express Admin View, perform these steps:

- 
- Step 1** Launch the browser.
  - Step 2** In the address bar, type the IP address of the router where Cisco CP Express Admin View is installed.  
For example, type `http://10.10.10.1` or `https://10.10.10.1`
  - Step 3** Specify the username and the password of the router.

**Figure 1 Authentication Page**



If you are using the router for the first time, use the one-time username and password (by default, `cisco/cisco`) configured for the router.

- Step 4** Click **Log In**.  
The Cisco CP Express Admin View launches and is ready for use.

[Figure 2](#) shows the Cisco CP Express Admin View page.

Figure 2 The Cisco CP Express Admin View page



303294







## Installing and Setting Up Cisco CP Express End User View

---

Administrators can install and set up the Cisco CP Express End User View and allow users to perform certain tasks using this interface. This chapter contains these sections:

- [Downloading Cisco CP Express End User View, page 3-1](#)
- [Customizing the Logo \(Optional\), page 3-1](#)
- [Installing Cisco CP Express End User View, page 3-2](#)
- [Setting Up Wireless Access on Cisco CP Express End User View, page 3-4](#)
- [Creating a Cisco CP Express End User View, page 3-4](#)
- [Deleting a Cisco CP Express End User View, page 3-5](#)


### Downloading Cisco CP Express End User View

To download Cisco CP Express End User View, perform these steps:

- 
- Step 1** Launch the browser, and go to <http://software.cisco.com/download/release.html?i=!y&mdfid=281795035&softwareid=282159854&release=2.8&os=>
- Step 2** When a login page appears, enter your login credentials and click **Log In**. If you do not have login credentials, you must register and obtain login credentials. Click **Register** (at the top of the page) to complete the registration process, and then return to this page. The Download Software page displays.
- Step 3** From the Download Software page, choose the release to download.
- Step 4** Select the **Cisco Configuration Professional Express 2.8** package link and click **Download** to download the compressed file, *cisco-config-pro-exp-enduser-k9-2\_8-en.zip* file to the system. This compressed file contains the Cisco CP Express End User View installation files.

### Customizing the Logo (Optional)

To customize the Cisco logo on the upper-right corner of the Cisco CP Express End User View, perform these steps:

- 
- Step 1** Extract the *cisco-config-pro-exp-enduser-k9-2\_8-en.zip* file to the system. The *cisco-config-pro-exp-enduser-k9-2\_8-en.zip* file contains these files: *ccpexpressEndUser28.tar* and *ccpExpressEU\_ap\_express-security.shtml.gz*.
- Step 2** Open the *ccpexpressEndUser28.tar* file using a file extraction utility such as WinZip or 7-Zip.
- Step 3** Navigate to the *ccpexpressEndUser28.tar\ccpexpressEndUser.tar\html\images\* folder to locate the *logo.png* file.
- Step 4** Replace the *logo.png* file with a logo file of your choice.
- 
-  **Note** Ensure that your logo is saved as a *logo.png* file and conforms to a 80 x 49 pixel size.
- 
- Step 5** Recreate the *ccpexpressEndUser28.tar* file using a file extraction utility such as WinZip or 7-Zip.
- 

## Installing Cisco CP Express End User View

### Before you Begin

You must delete all of the Cisco CP Express Admin View files before setting up the Cisco CP Express End User View.

### Procedure




---

**Note** A minimum of 4 MB free space must be available on the router flash memory to install the Cisco CP Express End User View.

---

To install the Cisco CP Express End User View on the router's flash memory, perform these steps:

- 
- Step 1** If you have customized the logo appearing on the Cisco CP Express End User View, use the *ccpexpressEndUser28.tar* file created in [Step 5](#); otherwise, use the *ccpexpressEndUser28.tar* extracted from the *cisco-config-pro-exp-enduser-k9-2\_8-en.zip* file.
- Step 2** Using an FTP or TFTP server, copy the extracted files onto the router's flash memory.
- ```
router> enable
Password: password
router# copy tftp: flash
```
- Step 3** Specify the IP address of the FTP or TFTP server as shown in this example:
- ```
Address or name of remote host []? <xxx.xxx.xxx.xxx>
where xxx.xxx.xxx.xxx is the IP address of the FTP or TFTP server.
```
- Step 4** Specify the name of the source file that is to be copied onto the router's flash memory, as shown in this example:
- ```
Source filename []? ccpexpressEndUser28.tar
```

Step 5 Specify the name of the destination file, as shown in this example:

```
Destination file name []? ccpexpressEndUser28.tar
```

Step 6 Extract the *ccpexpressEndUser28.tar* file onto the router's flash memory, as shown in this example:

```
router# archive tar /xtract flash:ccpexpressEndUser28.tar flash:
```

Step 7 If the router supports a wireless configuration, configure it, thus:

a. Telnet to the WAP of your router, as shown in this example:

```
ap#> enable  
Password: password
```

b. Verify that the *ccpExpressEU_ap_express-security.shtml.gz* file already exists on the “ap-801-” or “ap802-” folder of the wireless flash memory, as shown in this example:

```
ap# cd ap802-xxxxxx-xx.xxx-xxx.xxx/html/level/15/  
ap# dir
```



Note By default, the *ccpExpressEU_ap_express-security.shtml.gz* file is available on some versions of the IOS AP.

c. If the *ccpExpressEU_ap_express-security.shtml.gz* file is not available on the Wireless flash memory, proceed with [Step d](#). Otherwise, skip to [Step 8](#).

d. Copy the *ccpExpressEU_ap_express-security.shtml.gz* file onto the wireless flash, as shown in this example:

```
ap# copy tftp: flash
```



Note Ensure that you copy the *ccpExpressEU_ap_express-security.shtml.gz* file to the folder with a name beginning with the prefix “ap-801-” or “ap802-”, and ensure that this folder contains the *html/level/15/* sub-directories under it.

e. Specify the IP address of the FTP or TFTP server, as shown in this example:

```
Address or name of remote host []? <xxx.xxx.xxx.xxx>  
where xxx.xxx.xxx.xxx is the IP address of the FTP or TFTP server.
```

f. Specify the name of the source file that is to be copied onto your router's flash, as shown in this example:

```
Source filename []? ccpExpressEU_ap_express-security.shtml.gz
```

g. Specify the name of the destination file as shown in this example:

```
Destination file name []? ccpExpressEU_ap_express-security.shtml.gz
```

Step 8 After the installation is complete, delete the *ccpexpressEndUser28.tar* file from the flash memory of the router as shown in this example:

```
router# delete flash:ccpexpressEndUser28.tar
```

Step 9 Press **Return** to confirm the deletion.

Setting Up Wireless Access on Cisco CP Express End User View

Consider these important points before setting up the WAP on your Cisco CP Express End User View:

- Create a new DHCP pool and associate it to vlan 99 so that users can create SSIDs.
- Ensure that you do not set a one-time password for users, thereby preventing the users from changing their password on the Cisco CP Express End User View when needed.

Creating a Cisco CP Express End User View

- Step 1** Launch the Cisco CP Express End User View.
- Step 2** Click **User Management > Create EndUser View** to open the Create EndUser View page.

Figure 3 User Management Page

- Step 3** Specify these fields:
- EndUser UserName—the username for the End User view being created.
 - EndUser Password—the password to access the End User view being created.



Note This username and password must be made available to the user so that it can be used to access the Cisco CP Express End User View.

- Enable Secret—the enable secret password that is used to protect access to privileged exec commands.
- Confirm Secret—the enable secret password.

- Step 4** Select the interfaces that users must need to access.
Users will be able to associate vlans to these interfaces.
- Step 5** Click **Apply** to create an End User view.
-

Deleting a Cisco CP Express End User View

- Step 1** Launch the Cisco CP Express End User View.
- Step 2** Click **User Management > Create EndUser View** to view the End User View created.
- Step 3** Click **Delete View** to delete the End User view.
-

■ Deleting a Cisco CP Express End User View



Accessing the Wireless Interface

You can access the Wireless feature of the Cisco CP Express by choosing the **Wireless** link. The Cisco CP Express Admin View supports Wi-Fi Protected Access 2 (WPA2) encryption, which uses the ciphers aes-ccm tkip encryption mode.



Note

The Wireless feature is displayed on the Cisco CP Express only if your router supports a WAP.

Based on the WAP settings, there may be variations in the way the Wireless feature functions. The variations may occur when:

- 1. Accessing the Wireless feature for the first time**—When you click the **Wireless** link, it tries to automatically establish a connection to the wireless interface without prompting for a username and password, if one of these two options is true:
 - Your router is a factory fresh router.
 - Factory default username and password of the WAP have not been changed. The factory default username/password of your Wireless router is *cisco/cisco*.
- 2. Password of WAP has changed**—You are prompted to specify the username and password of the WAP if the factory default username/password (*cisco/cisco*) have been changed.
- 3. Username and password of WAP have changed**
 - If you are using the Mozilla Firefox browser, you are prompted to specify the username and password of the WAP.
 - If you are using the Google Chrome browser, you will encounter a “401 Unauthorized” error.

Handling 401 Unauthorized error

Choose the **Click here to open the wireless screen in a new browser tab link** to open the Wireless feature in a new browser tab.



Note

The Wireless feature is not displayed on the Cisco CP Express if your router is any of the following: Cisco C866VAE-W-E-K9, C867VAE-W-A-K9, C867VAE-W-E-K9, and C867VAE-POE-W-A-K9. To view the wireless feature on CCP Express, follow the steps mentioned in the below link:
http://www.cisco.com/en/US/docs/routers/access/800/860-880-890/software/configuration/guide/config_WLAN.html#wp1251664





Uninstalling and Upgrading Cisco CP Express Admin View

This chapter contains these sections:

- [Uninstalling Cisco CP Express Admin View, page 5-1](#)
- [Upgrading Cisco CP Express Admin View to a Later Version, page 5-2](#)
- [Retrieving Lost or Misplaced Files, page 5-2](#)

Uninstalling Cisco CP Express Admin View

To uninstall the Cisco CP Express Admin View from the flash memory of the router, perform these steps:

Step 1 On the router, navigate to the directory in which the Cisco CP Express Admin View files are located using this command:

```
router# cd flash:
```

Step 2 Use the delete command to remove all Cisco CP Express Admin View files and folders from the router's flash memory.



Note Ensure that you delete the files extracted from the *ccpexpress28Admin.tar* file, and the *ccpExpress_ap_express-security.shtml.gz*.

a. Delete the *home.shtml* file:

```
router# delete /force /recursive home.shtml
```

b. Delete the *ccpexp* folder:

```
router# delete /force /recursive flash:ccpexp
```

c. Delete the *ccpExpress_ap_express-security.shtml.gz* file from the *ap802-xxxxx-xx.xxx-xxx.xxx/html/level/15/* folder of the flash memory of the WAP:

```
ap# delete  
flash:/ap802-ccw7-mx.124-25d.JAX/html/level/15/ccpExpress_ap_express-security.shtml.gz
```

Upgrading Cisco CP Express Admin View to a Later Version

When a new version of the Cisco CP Express Admin View is available, perform these steps to upgrade to the new version:

-
- Step 1** Follow the steps detailed in the [“Uninstalling Cisco CP Express Admin View”](#) section on page 5-1 to uninstall an existing version of the Cisco CP Express Admin View.
 - Step 2** Follow the steps detailed in the [“Downloading Cisco CP Express Admin View”](#) section on page 2-1 to download the Cisco CP Express Admin View installation files.
 - Step 3** Follow the steps detailed in the [“Installing Cisco CP Express Admin View”](#) section on page 2-1 to install the Cisco CP Express Admin View.
-

Retrieving Lost or Misplaced Files

**Caution**

Exercise care while handling the Cisco CP Express Admin View files.

If you accidentally delete any of these files, perform these steps:

-
- Step 1** From the router’s flash memory, delete the files you extracted from the *cisco-config-pro-exp-admin-k9-2_8-en.zip* file. For more information, see the [“Uninstalling Cisco CP Express Admin View”](#) section on page 5-1.
 - Step 2** Follow the procedure detailed in [Downloading Cisco CP Express Admin View](#) to download the files.
 - Step 3** Copy the files to the router’s flash memory, and follow the procedure detailed in the [“Installing Cisco CP Express Admin View”](#) section on page 2-1 to extract and install the Admin View files.
-



Uninstalling and Upgrading Cisco CP Express End User View

This chapter contains these sections:

- [Uninstalling Cisco CP Express End User View, page 6-1](#)
- [Upgrading Cisco CP Express End User View to a Later Version, page 6-2](#)
- [Retrieving Lost or Misplaced Files, page 6-2](#)

Uninstalling Cisco CP Express End User View

To uninstall the Cisco CP Express End User View from the flash memory of the router, perform these steps:

Step 1 On your router, change to the directory in which the Cisco CP Express End User View files are located by using this command:

```
router# cd flash:
```

Step 2 Use the delete command to remove all the Cisco CP Express End User View files and folders from the router's flash memory.



Note Ensure that you delete all the files extracted from the *ccexpressEndUser28.tar* file, and the *ccpExpressEU_ap_express-security.shtml.gz* file.

a. Delete the *ccpressenduser.tar* file:

```
router# delete /force /recursive ccpexpressEndUser.tar
```

b. Delete the *ccpressenduser* file:

```
router# delete /force /recursive ccpexpressEndUser
```

c. Delete the *ccpExpressEU_ap_express-security.shtml.gz* file from the *ap802-xxxxx-xx.xxx-xxx.xxx/html/level/15/* folder of the flash memory of the WAP:

```
ap# delete  
flash:/ap802-ccw7-mx.124-25d.JAX/html/level/15/ccpExpressEU_ap_express-security.shtml.  
gz
```

Upgrading Cisco CP Express End User View to a Later Version

When a new version of the Cisco CP Express End User View is available, perform these steps to upgrade:

-
- Step 1** Follow the steps detailed in the [“Uninstalling Cisco CP Express End User View”](#) section on page 6-1 to uninstall an existing version of the Cisco CP Express End User View.
 - Step 2** Follow the steps detailed in the [“Downloading Cisco CP Express End User View”](#) section on page 3-1 to download the Cisco CP Express End User View installation files.
 - Step 3** Follow the steps detailed in the [“Installing Cisco CP Express End User View”](#) section on page 3-2 to install and launch the Cisco CP Express End User View.
-

Retrieving Lost or Misplaced Files

**Caution**

Exercise care while handling the Cisco CP Express End User View files.

If you accidentally delete any of these files, perform these steps:

-
- Step 1** From the router’s flash memory, delete the files you extracted from the *cisco-config-pro-exp-enduser-k9-2_8-en.zip* file. For more information, see the [“Uninstalling Cisco CP Express End User View”](#) section on page 6-1.
 - Step 2** Follow the steps detailed in the [Downloading Cisco CP Express End User View](#) to download the Cisco CP Express End User View installation files.
 - Step 3** Copy the files to the router’s flash memory and follow the procedure detailed in the [“Installing Cisco CP Express End User View”](#) section on page 3-2 to extract and install the Cisco CP Express End User View files.