

## Cisco SR 520-T1 Secure Router

### **Secure, High-Bandwidth Connectivity for Your Small Business Part of the Cisco Small Business Pro Series**

Connections -- between employees, customers, partners, and suppliers -- are essential to the success of any business. As technology continues to transform how we do business, secure, reliable, high-speed network connectivity to the outside world becomes even more important. Many small businesses in the United States and Canada are opting for T1 services, rather than DSL or cable, because T1 lines deliver the same high data rates in both directions, inbound and outbound, with better reliability.

With limited resources, small businesses need simple, affordable, reliable T1 access products that also provide strong security. The Cisco® SR 520-T1 Secure Router does just that. It delivers high-bandwidth connectivity--Internet access, advanced security, and virtual private network (VPN) access--all in a single easy-to-use device. As part of the Cisco Small Business Pro Series, the Cisco SR 520-T1 Secure Router is easy to deploy and manage. It can be combined with other Pro Series products in a powerful, integrated system that a small business can build on over time.

### **Product Overview**

The Cisco SR 520-T1 Secure Router delivers:

- High-performance T1 data access for small businesses
- Highly secure site-to-site connectivity with IP Security (IPsec) VPN, Secure Sockets Layer (SSL) VPN, and Easy VPN
- Strong security, including:
  - Stateful packet inspection firewall to help minimize web and email threats
  - Intrusion prevention system, providing protection from attacks, worms, and viruses by detecting and stopping these threats before they can affect the network
  - Content filtering to restrict access to undesirable websites and help guard against malware and phishing attacks
  - Security feature license for VPN, IPS, and content filtering
- Support for static routing for providing Internet connectivity
- Dependable connectivity for LAN switches and/or network edge (DMZ) through two 10/100 Fast Ethernet ports
- Simplified configuration management, and troubleshooting with Cisco Configuration Assistant 2.1 and Cisco SR 520-T1 Secure Router Configuration Utility

Table 1 lists current Cisco SR 520-T1 Secure Router models.

**Table 1.** Cisco SR 520-T1 Secure Router Models

Part Number	Description
SR520-T1-K9	Cisco SR 520-T1 Secure Router
L-SR520-T1-SEC	Security Feature License for Cisco SR 520-T1 Secure Router (includes: IPsec /SSL VPN (10 concurrent sessions), Easy VPN, content filtering, and a 1-year intrusion prevention system (IPS))

Figure 1 shows a Cisco SR 520-T1 Secure Router.

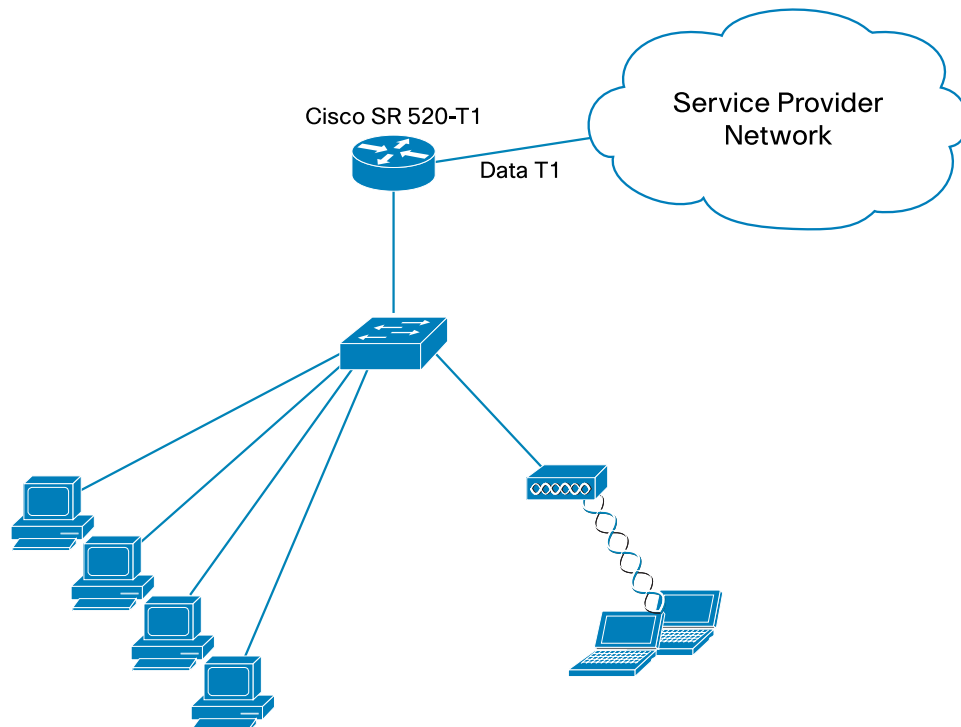
**Figure 1.** Cisco SR 520-T1 Secure Router



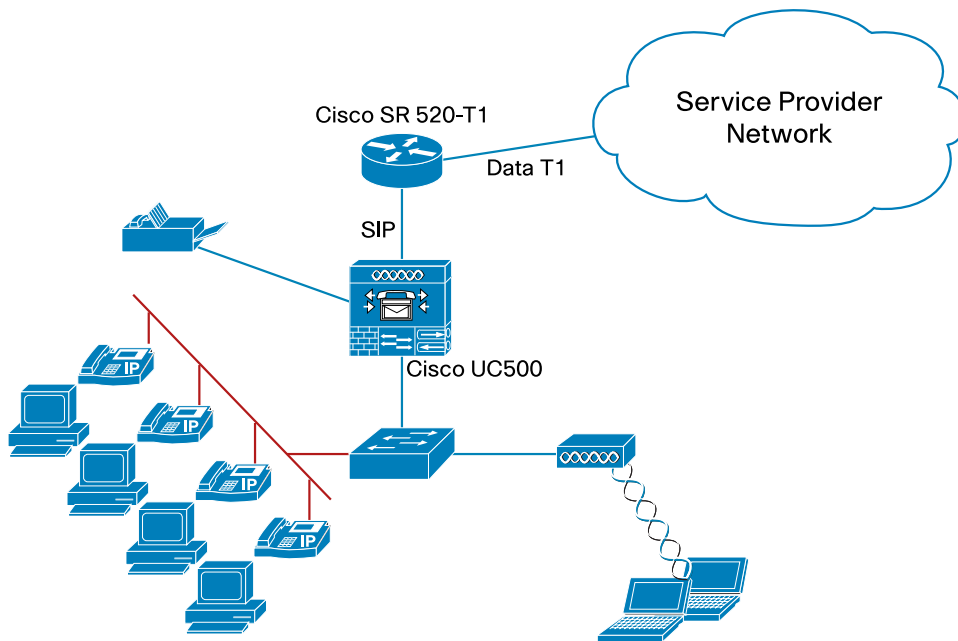
## Applications

The Cisco SR 520-T1 Secure Router supports highly secure T1 WAN data connectivity in both data-only deployments and as a part of the Cisco Smart Business Communications System (SBCS). The illustrations below show these deployment scenarios.

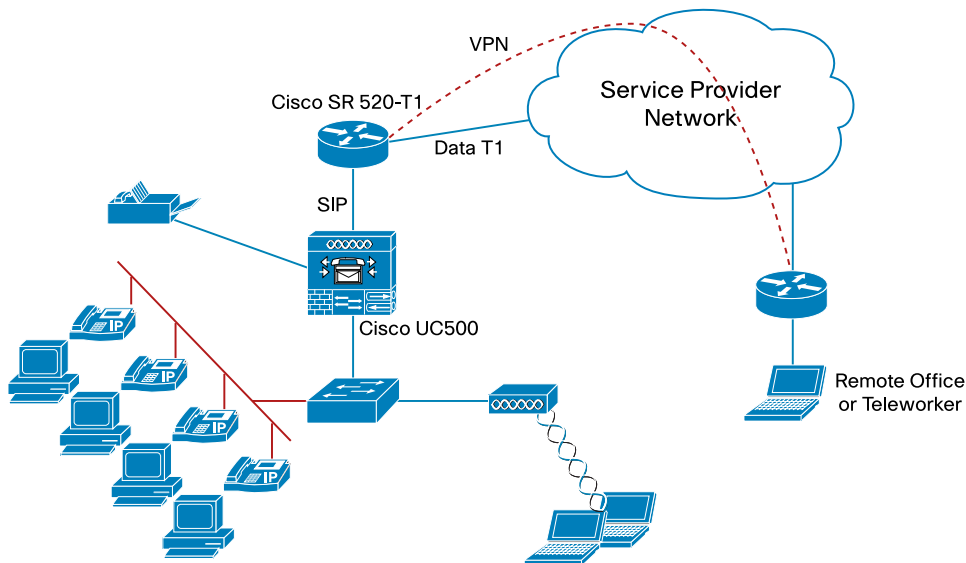
**Figure 2.** Cisco SR 520-T1 Secure Router Data Deployment



**Figure 3.** Cisco SR 520-T1 Secure Router Deployment as Part of the Cisco SBCS



**Figure 4.** Cisco SR 520-T1 Secure Router Site-to-Site / Teleworker VPN Deployment



The Cisco SR 520-T1 Secure Router can help you accomplish the following:

- Securely connect your small business:** The Cisco SR 520-T1 Secure Router is ideal for securely connecting your business to customers, partners, and suppliers. Built-in advanced security and VPN support let you do business over the Internet with confidence and peace of mind.
- Add security and high-speed data communications to Cisco SBCS:** If your business is already using the Cisco Smart Business Communications System, you can strengthen security by adding the Cisco SR 520-T1 Secure Router. Intrusion prevention and content filtering can add to your peace of mind, and intelligent network quality of service (QoS) lets you prioritize voice and data network traffic to improve network performance.

- **Safely connect traveling employees or teleworkers:** The Cisco SR 520-T1 Secure Router enables highly secure VPN access to office applications and files.

## Features and Benefits

The Cisco SR 520-T1 Secure Router provides:

- **T1 data connectivity:** The Cisco SR 520-T1 Secure Router supports the symmetrical, high-bandwidth connections over a T1 line that many small businesses require.
- **Strong security features:** Optional strong security features for the Cisco SR 520-T1 Secure Router include a firewall that inspects traffic at the application layer to help protect the network from unauthorized users, an inline intrusion prevention system that provides deep-packet inspection to effectively prevent a wide range of network attacks, content filtering to add another layer of defense against malware and phishing attacks, and support for IPsec and SSL VPN connections to enable remote employees to access your network securely.
- **Two 10/100 Fast Ethernet ports:** The Cisco SR 520-T1 Secure Router provides dependable connectivity for LAN switches in the office. One port can also serve as a network edge (DMZ) to add an additional layer of security to your network.
- **Simplified deployment and management:** The Cisco T1 Configuration Utility streamlines setup of the T1 connection. Cisco Configuration Assistant enables you to fine-tune security settings and manage the Cisco SR 520-T1 Secure Router as part of a larger system, such as the Cisco SBCS. It can also generate status reports, synchronize passwords, and upgrade software across all of your Cisco network devices, reducing the time your staff devotes to network maintenance. Cisco Configuration Assistant is available for download free of charge at <http://www.cisco.com/go/configassist>.
- **Part of the Cisco Small Business Pro Series:** The Cisco SR 520-T1 Secure Router can be combined with other Pro Series products in powerful, fully integrated systems, such as the Cisco Smart Business Communications System.

## Product Specifications

Table 2 gives specifications for the Cisco SR 520-T1 Secure Router. Table 3 lists hardware specifications for the router.

**Table 2.** Cisco SR 520-T1 Secure Router Specifications

Feature	Description
<b>Routing protocols</b>	Static routing
<b>Recommended number of users</b>	Up to 50
<b>Security features</b>	Secure connectivity: <ul style="list-style-type: none"> <li>• 10 SSL VPN tunnels</li> <li>• 10 IPsec VPN tunnels</li> <li>• Hardware-accelerated Triple Data Encryption Standard (3DES) and Advanced Encryption Standard (AES)</li> <li>• Stateful packet inspection firewall</li> <li>• Intrusion prevention system</li> <li>• Content filtering</li> <li>• Network Address Translation (NAT)</li> <li>• Secure HTTP (HTTPS)</li> <li>• Access control lists (ACLs)</li> </ul>
<b>Management features</b>	<ul style="list-style-type: none"> <li>• Cisco Configuration Assistant 2.1</li> <li>• Cisco SR 520-T1 Secure Router Configuration Utility</li> </ul>

**Table 3.** Cisco SR 520-T1 Secure Router Hardware

Feature	Description
<b>Default DRAM</b>	256 MB
<b>Maximum DRAM</b>	256 MB
<b>Default flash memory</b>	128 MB
<b>Maximum flash memory</b>	128 MB
<b>LAN</b>	Two 10/100 Fast Ethernet ports for LAN and/or DMZ
<b>Console port</b>	RJ-45 (for password recovery)
<b>LEDs</b>	OK: System status CD and AI: T1 status LAN 0 and 1: LAN status
<b>External power supply</b>	Universal 100 to 240 VAC
<b>Physical dimensions and weight</b>	Product dimensions: <ul style="list-style-type: none"> <li>• W x D x H = 10.31 x 8.13 x 1.72 in. (262 x 207 x 43.7 mm)</li> <li>• Weight: 3.38 lb (1.36 kg) maximum</li> </ul>
<b>Power</b>	Product power specifications: <ul style="list-style-type: none"> <li>• AC input voltage: 100 to 240 VAC autoranging</li> <li>• Frequency: 50 to 60 Hz</li> <li>• Maximum output power: 30W</li> <li>• Output voltage: 12V DC</li> </ul>
<b>Approvals and compliance</b>	<ul style="list-style-type: none"> <li>• FCC Part 68 (TIA-968), U.S. telecom requirements</li> <li>• CS-03, Canadian telecom requirements</li> <li>• IEC 60950-1</li> <li>• UL 60950-1</li> <li>• CAN/CSA-C22.2 No. 60950-1</li> <li>• AS/NZ 60950.1</li> <li>• EN 300386</li> <li>• EN 55024 (CISPR24)</li> <li>• EN 50082-1</li> <li>• EN 61000-3-2</li> <li>• CFR 47 Part 15, Class A</li> <li>• ICES-003 Class A</li> <li>• EN 55022 Class A</li> <li>• CISPR22 Class A</li> <li>• AS/NZ CISPR Class A</li> <li>• VCCI Class A</li> <li>• EN 300386 Class A</li> <li>• EN 61000-3-2</li> <li>• EN 61000-3-3</li> </ul>
<b>Environmental operating range</b>	<ul style="list-style-type: none"> <li>• Nonoperating temperature: -4° to 149°F (-20° to 65° C)</li> <li>• Nonoperating humidity: 5% to 95% relative humidity (noncondensing)</li> <li>• Nonoperating altitude: 0 to 15,000 ft (0 to 4570 m)</li> <li>• Operating temperature: 32° to 104°F (0° to 40°C)</li> <li>• Operating humidity: 10% to 85% relative humidity (noncondensing)</li> <li>• Operating altitude: 0 to 10,000 ft (0 to 3000 m)</li> </ul>

## Ordering

Table 4 lists the part numbers for the Cisco SR 520-T1 Secure Router.

**Table 4.** Product Part Numbers

Part Number/SKU	Product
SR520-T1-K9	Cisco SR 520-T1 Secure Router
L-SR520-T1-SEC	Security Feature License for Cisco SR 520-T1 Secure Router

## Secure Connectivity for Your Business

The Cisco SR 520-T1 Secure Router provides simple, secure, affordable T1 data connectivity for small businesses. As part of the Cisco Small Business Pro Series, the Cisco SR 520-T1 Secure Router is easy to deploy and manage. The Cisco SR 520-T1 Secure Router can also be combined with other Pro Series products in powerful, integrated systems that a small business can build over time.

## Service and Support

The Cisco SR 520-T1 Secure Router is backed by the Cisco Small Business Pro Service, which provides affordable peace-of-mind coverage. This subscription-based service helps you derive maximum value from Cisco Small Business Pro products. Delivered by Cisco, this comprehensive service includes software upgrades and updates, extended access to the Cisco Small Business Support Center, and next-business-day hardware replacement as necessary.

Products in the Cisco Small Business Pro Series are supported by professionals in [Cisco Small Business Support Center locations](#) worldwide who are specifically trained to understand your needs. The [Cisco Small Business Support Community](#), an online forum, enables you to collaborate with your peers and reach Cisco technical experts for support information

## For More Information

For more information about Cisco 500 Series Secure Routers, visit <http://www.cisco.com/go/sr500> or contact your local account representative.

For more information about the Cisco Smart Business Communication System, visit <http://www.cisco.com/go/sbcs>.



Americas Headquarters  
Cisco Systems, Inc.  
San Jose, CA

Asia Pacific Headquarters  
Cisco Systems (USA) Pte. Ltd.  
Singapore

Europe Headquarters  
Cisco Systems International BV  
Amsterdam, The Netherlands

Cisco has more than 200 offices worldwide. Addresses, phone numbers, and fax numbers are listed on the Cisco Website at [www.cisco.com/go/offices](http://www.cisco.com/go/offices).

CCDE, CCSI, CCENT, Cisco Eos, Cisco HealthPresence, the Cisco logo, Cisco Lumin, Cisco Nexus, Cisco Nurse Connect, Cisco Stackpower, Cisco StadiumVision, Cisco TelePresence, Cisco WebEx, DCE, and Welcome to the Human Network are trademarks; Changing the Way We Work, Live, Play, and Learn and Cisco Store are service marks; and Access Registrar, Aironet, AsyncOS, Bringing the Meeting To You, Catalyst, CCDA, CCDP, CCIE, CCIP, CCNA, CCNP, CCSP, CCVP, Cisco, the Cisco Certified Internetwork Expert logo, Cisco IOS, Cisco Press, Cisco Systems, Cisco Systems Capital, the Cisco Systems logo, Cisco Unity, Collaboration Without Limitation, EtherFast, EtherSwitch, Event Center, Fast Step, Follow Me Browsing, FormShare, GigaDrive, HomeLink, Internet Quotient, IOS, iPhone, iQuick Study, IronPort, the IronPort logo, LightStream, Linksys, MediaTone, MeetingPlace, MeetingPlace Chime Sound, MGX, Networkers, Networking Academy, Network Registrar, PCNow, PIX, PowerPanels, ProConnect, ScriptShare, SenderBase, SMARTnet, Spectrum Expert, StackWise, The Fastest Way to Increase Your Internet Quotient, TransPath, WebEx, and the WebEx logo are registered trademarks of Cisco Systems, Inc. and/or its affiliates in the United States and certain other countries.

All other trademarks mentioned in this document or website are the property of their respective owners. The use of the word partner does not imply a partnership relationship between Cisco and any other company. (0903R)