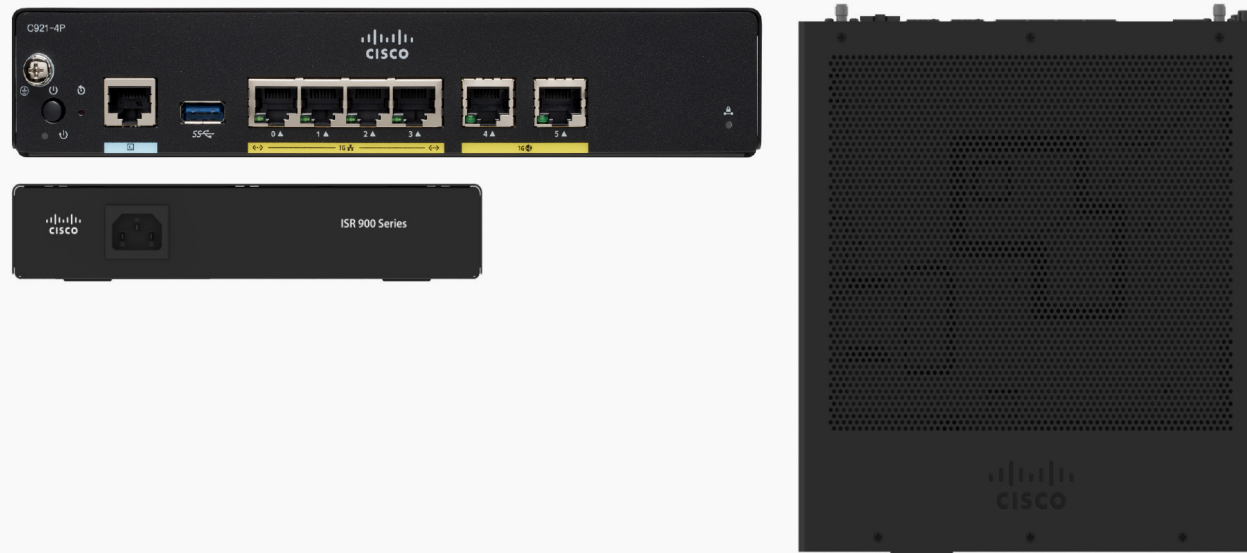


Cisco 900 Series Integrated Services Routers

The Cisco® 900 Series Integrated Services Routers (ISRs) combine Internet access, comprehensive security, and wireless services in a single high-performance device that is easy to deploy and manage. They are well suited for deployment as Customer Premises Equipment (CPE) in enterprise small branch offices and in service provider managed services environments.

Figure 1. C921-4P ISR front, back, and top views



Contents

Platform support

Cisco IOS Software licensing and packaging

Ordering information

Cisco and partner services

For more information

Platform support

Table 1 describes the interfaces and integrated capabilities supported by each of the Cisco 900 Series ISR models.

Table 1. Platform support

Model	WAN interfaces	LAN interfaces	Integrated USB 2.0
C921-4P	2 ports Gigabit Ethernet (GE)	4-port GE managed switch	Yes
C931-4P	2 ports GE	4-port GE managed switch	Yes
C927-4P	1 port GE and 1 VADSL (Annex A)	4-port GE managed switch	Yes
C926-4P	1 port GE and 1 VADSL (Annex B/J)	4-port GE managed switch	Yes
C927-4PM	1 port GE and 1 VADSL (Annex M)	4-port GE managed switch	Yes

Cisco IOS Software licensing and packaging

Cisco IOS Universal image

A single Cisco IOS® Universal image encompassing all functions is delivered with the platform. Advanced features can be enabled simply by activating a software license on the Universal image. Technology packages and feature licenses, enabled through right-to-use licenses, simplify software delivery and decrease the operational costs of deploying new features.

Three major technology licenses are available on the Cisco 900 Series; these licenses can be activated through the Cisco software activation process identified at <https://www.cisco.com/go/sa>. The following licenses are available:

- IP Base: This technology package is the default.
- Application Experience (APP): This license includes data and application performance features.
- Security (SEC) or Security with No Payload Encryption (SEC-NPE): This license includes features for securing network infrastructure.

Contents

Platform support

Cisco IOS Software licensing and packaging

Ordering information

Cisco and partner services

For more information

Table 2 lists the part numbers and features for each of the licenses. Table 3 lists the part numbers for the software images.

Table 2. Licenses

Part number	Bundle	Features
SL-900-IPB	IP Base (default)	Routing protocols, Access Control Lists (ACL), Network Address Translation (NAT), Quality of Service (QoS), Bidirectional Forwarding Detection (BFD), Virtual Routing and Forwarding (VRF) Lite, IP SLA Responder
SL-900-APP(=)	Application Experience (APP)	<p>IP Base + advanced networking protocols: Layer 2 Tunneling Protocol (L2TP) v3, Multiprotocol Label Switching (MPLS)</p> <p>Application Experience: Performance Routing (PfR) v3, Next-Generation Network-Based Application Recognition (NBAR2), Application Visibility and Control (AVC), IP SLA Initiator</p> <p>Hybrid Cloud Connectivity: LISP, Virtual Private LAN Services (VPLS), Ethernet over MPLS</p>
SL-900-SEC(=) SL-900-SECNPE(=)	Security (SEC)	<p>IP Base + Advanced Security: Zone-based firewall, IPsec VPN, Dynamic Multipoint VPN (DMVPN), FlexVPN, Group Encrypted Transport (GET) VPN, Secure Sockets Layer (SSL) VPN</p> <p>Provides up to 250 Mbps IPsec performance</p>

Contents

Platform support

Cisco IOS Software licensing and packaging

Ordering information

Cisco and partner services

For more information

Table 3. Software images

Part number	Description
Router software images	
SISR900UK9-1583MB(=)	C900-universalk9-mz: Universal image for C921-4P, C931-4P, C927-4P, C927-4PM, C926-4P
SISR900NPEUK9-1583MB(=)	Cisco 900 ISR Universal image and non-payload encryption image

Ordering information

Table 4 lists the part numbers for each of the Cisco 900 Series ISR models. To place an order, visit the [Cisco Ordering homepage](#). To download software, visit the [Cisco Software Center](#).

Table 4. Product part numbers

Part number	Description
Integrated services routers	
C921-4P	Cisco 921 Gigabit Ethernet security router with internal power supply
C931-4P	Cisco 931 Gigabit Ethernet security router with internal power supply
C927-4P	Cisco 927 Gigabit Ethernet security router with VDSL/ADSL2+ Annex A
C927-4PM	Cisco 927 Gigabit Ethernet security router with VDSL/ADSL2+ Annex M
C926-4P	Cisco 926 Gigabit Ethernet security router with VDSL/ADSL2+ Annex B/J
	<ul style="list-style-type: none"> Cisco C921-4P and C931-4P are supported only on Cisco IOS Software Release 15.8(3)Mb and later Cisco C927-4P, C927-4PM, and C926-4P are supported only on Cisco IOS Software Release 15.8(3)M1 and later
Mount kits	
ACS-900-RM-19	Rack-mount kit for 900 Series ISRs
ACS-900-DM	Under-the-desk mount kit for all 900 Series ISRs

Contents

Platform support

Cisco IOS Software licensing and packaging

Ordering information

Cisco and partner services

For more information

Create and pick out the exact top-level product ID from the above list.

The screenshot shows the Cisco Commerce Configuration interface for a C931-4P configuration. The configuration summary table is as follows:

Category	Qty	Extended List Price (USD)
IOS Software Version and Type		
IOS Technology Packages		
SL-900-IPB	1	0.00
Eco-Friendly		
GREEN-OPTION	1	0.00
Power Cables		
Mounting		
Console		
Ethernet Cable		
Subtotal		1,695.00
Estimated Lead Time		77 days

Warnings (4):

- Please note that this order will be placed on a Compliance Hold. For questions about the compliance hold process, please contact central_planning_compliance_hold@cisco.com. (CE200691)
- GRFFN-OPTION is defaulted under Eco-Friendly. (CF100033)

Option Search: C931-4P > IOS Software Version and Type

SKU	Qty	Estimated Lead Time	Unit List Price (USD)
<input type="checkbox"/> SC900UK9-15803M EP Cisco ISR900 UNIVERSAL	1	28 days	0.00

Buttons: Reset Configuration, Cancel, Done, We can help!

Mandatory: Cisco IOS Software Version and Type NPE or NON-NPE image (15.8.3M or later is the minimum release supported).

Optional licenses: Technology packages.

Mandatory: Power cables (pick the correct power supply cord for the country or region from the list).

All other cables and accessories are optional.

For additional information and details about Cisco IOS Software licensing and packaging on the 900 Series, please visit: <https://www.cisco.com/c/en/us/support/routers/900-series-integrated-services-routers-isr/products-licensing-information-listing.html>

For the Cisco 900 Series ISR Hardware and Software Installation Guide, go to: <https://www.cisco.com/c/en/us/support/routers/900-series-integrated-services-routers-isr/products-installation-guides-list.html>

<https://www.cisco.com/c/en/us/support/routers/900-series-integrated-services-routers-isr/products-installation-and-configuration-guides-list.html>

Contents

Platform support

Cisco IOS Software licensing and packaging

Ordering information

Cisco and partner services

For more information

Cisco and partner services

Services from Cisco and our certified partners can help you reduce the cost and complexity of branch-office deployments. We have the depth and breadth of experience across technologies to architect a blueprint for a branch-office solution to meet your company's needs. Planning and design services align technology with business goals and can increase the accuracy, speed, and efficiency of deployment. Technical services help maintain operational health, strengthen software application functions, solve performance problems, and lower expenses. Optimization services are designed to continually improve performance and help your team succeed with new technologies. For more information, visit <https://www.cisco.com/go/services>.

Cisco Smart Net Total Care® technical support for the 900 Series ISRs is available on a one-time or annual contract basis. Support options range from help-desk assistance to proactive, onsite consultation. All support contracts include:

- Major Cisco IOS Software updates in protocol, security, bandwidth, and feature improvements
- Full access rights to Cisco.com technical libraries for technical assistance, electronic commerce, and product information
- 24-hour access to the industry's largest dedicated technical support staff

For more information

For more information about the Cisco 900 Series ISRs, visit <https://www.cisco.com/go/isr900> or contact your local Cisco account representative.