

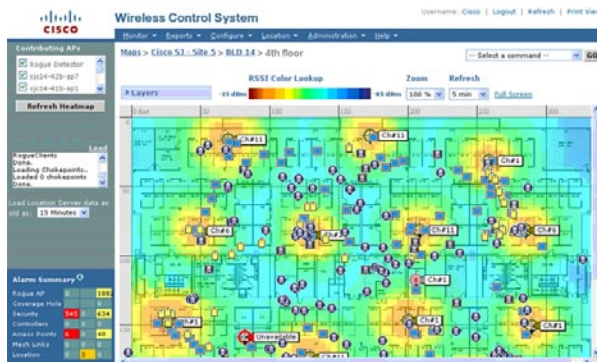


Why Should I Care About the Location-Aware Healthcare Solution?

Hospitals need to manage costs while delivering high-quality patient care. A location-aware hospital can enhance the quality of patient care, increase staff efficiency, and reduce capital and operational costs.

The Cisco® Location-Aware Healthcare solution enables hospitals to improve clinical processes with real-time resource location information. It also enables access to environmental information (for example, temperature or humidity) to provide an optimal patient experience. The solution enables both real-time tracking of assets as they move throughout the campus (Figure 1) and event-driven tracking as they exit and enter areas.

Figure 1 Accurately Pinpoint a Wi-Fi Device's Location



What Problems Need to Be Solved?

Healthcare organizations need to improve asset utilization, optimize complex workflow processes, and ensure patient safety. Healthcare organizations are deploying location services to address the following clinical requirements:

- Quickly locate equipment scheduled for maintenance.
- Automatically relay status information from Wi-Fi tags attached to medical equipment.

- Prevent loss or misplacement of valuable mobile assets.
- Integrate asset management and context-based information into the workflow.
- Increase utilization of diagnostic and test equipment.
- Quickly locate equipment or patients throughout a clinical encounter.

What Are the Business Benefits?

Manage medical equipment and hospital beds: Receiving accurate information about the status of healthcare equipment and its whereabouts can greatly enhance an organization's operational efficiency and help improve patient care. For example tracking the availability of beds or wheelchairs means that workflow is improved among hospital staff and patient wait times are reduced.

Issue patient location alerts: Location services can cost-effectively locate and track patients who require special care such as infants, the elderly, or people who have dementia. Alarms can be issued if these patients stray beyond designated areas. This can lead to faster staff response times and improved patient safety.

Control asset loss: Nurses sacrifice time with patients to find equipment. An asset tag on equipment, such as a wheel chair, can automatically send a notice to alert facilities when it enters or exits patient loading and unloading areas. Personnel can immediately be dispatched to reclaim the wheel chair. Asset loss can be significantly reduced when there are boundaries for when and where assets can move. Having control and visibility over all assets can lead to significant reductions in equipment loss and capital expenses.

Cost-effectively locate staff: Medical staff can be tracked to help identify bottlenecks and adapt workflow for more efficient use of resources. Caregivers and specialists can be quickly located and re-routed to address emergencies, urgent issues, or patient needs through location services

and advanced applications that use location-based information. Active RFID tags can also feature a notification button for staff and patients to request emergency assistance. Using location services in this way can enhance staff responsiveness, support real-time workflow automation, and accelerate patient treatment.

Case Studies for Wireless Location Services

Cisco location solutions have been deployed in healthcare organizations across the globe. Learn more by reading the information below.

[Cisco: Improve Patient Care with Wireless Location Services, Bronson Healthcare Implements Wireless Tracking, Intermountain Healthcare: Mobilizing Hospitals](#)

Cisco has established an open and interoperable standard for active RFID tags from partners. This specification includes tag information such as location, status data, battery life status, and notification button. Tag partners can customize the information collected for your specific applications. Alternatively you can use the applications that these partners offer:

[Aeroscout: Healthcare and Location Services](#)

[PanGo: PanGo Medical RFID Solutions](#)

What Are the Capabilities of a Location-Aware Hospital Solution?

The Cisco Location-Aware Healthcare solution enables you to quickly and easily locate critical, expensive, and often scarce equipment and medical devices; efficiently manage workflow processes; locate staff and patients; send context-based information to maintenance workers, and monitor status information from Wi-Fi tags. The solution delivers tangible benefits, including:

- Flexibility to track any 802.11 device, including Wi-Fi-enabled equipment, devices, phones, active RFID tags, and active or passive RFID tags.



The Cisco Location-Aware Healthcare Solution

- Scalability to track thousands of devices over the same network that serves your wireless carts on wheels, laptops and PDAs.
- Accurate pervasive or chokepoint location information reporting.
- Easy integration with third party clinical applications that support location services or telemetry information.
- Centralized, quick and easy explorer-like browsing of all Wi-Fi devices across different geographies, campuses, buildings, floors, and areas.
- Proactive location-based alerts in response to the movement, entry, exit, or absence of Wi-Fi devices and tags to help reduce costs associated with shrinkage, leasing and equipment replacement.
- Lower total cost of ownership by using the existing Cisco WLAN infrastructure and interoperable tags from partners.

Why Cisco?

Cisco is the leader in healthcare connectivity for collaboration and a catalyst in transforming healthcare based on its industry innovation, participation, and collaboration.

The Cisco Location-Aware Healthcare solution is part of the Cisco Location solution portfolio. These solutions use the existing Cisco Unified Wireless Network to provide hospitals with up-to-date visibility of resources. This lowers the total cost of ownership of the wireless network and maximizes current investments since specialized location readers are not required. Tags and applications from multiple partners are fully interoperable with the Cisco infrastructure to ensure the optimal solution. To learn more, visit: www.cisco.com/go/location

Specialized Applications: Please contact one of the following Cisco Location-Based Services partners for specialized healthcare location applications and solutions: [AeroScout](#), or [PanGo](#).