



Culminating Packet Tracer Activities in Discovery/Exploration



Glenn Wright

glwright@esc11.net

Cisco | Networking Academy®
Mind Wide Open™



Knowledge of Packet Tracer

- If you just attended the Basic Use of PT session, raise your hand
- If you feel you are somewhat familiar with the basic of PT, raise your hand
- If you have used PT with students, raise your hand
- If you have used PT activities (.pka) files, raise your hand
- If you have created PT activities (.pka) files, raise your hand



Culminating PT Activities

Agenda

- Overview of the Packet Tracer Interface

Hands-on Activities

- Culminating activity from Discovery 2 – Working at a Small-to-Medium Business or ISP
- Culminating activities from Exploration 2 – Routing Protocols and Concepts
- Open Discussion

How will you use Packet Tracer in the classroom?

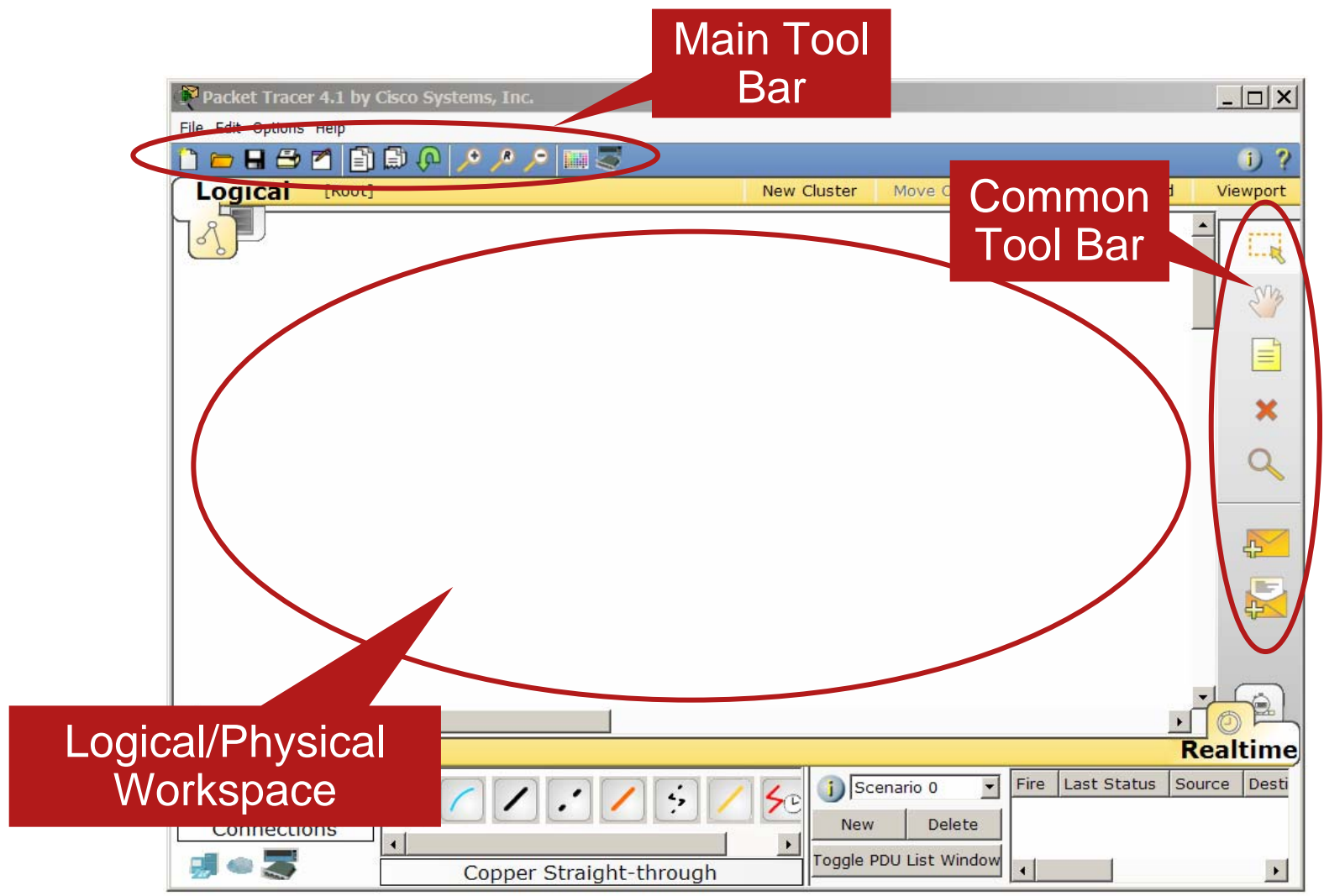
Packet Tracer Introduction



Overview of the Packet Tracer Interface

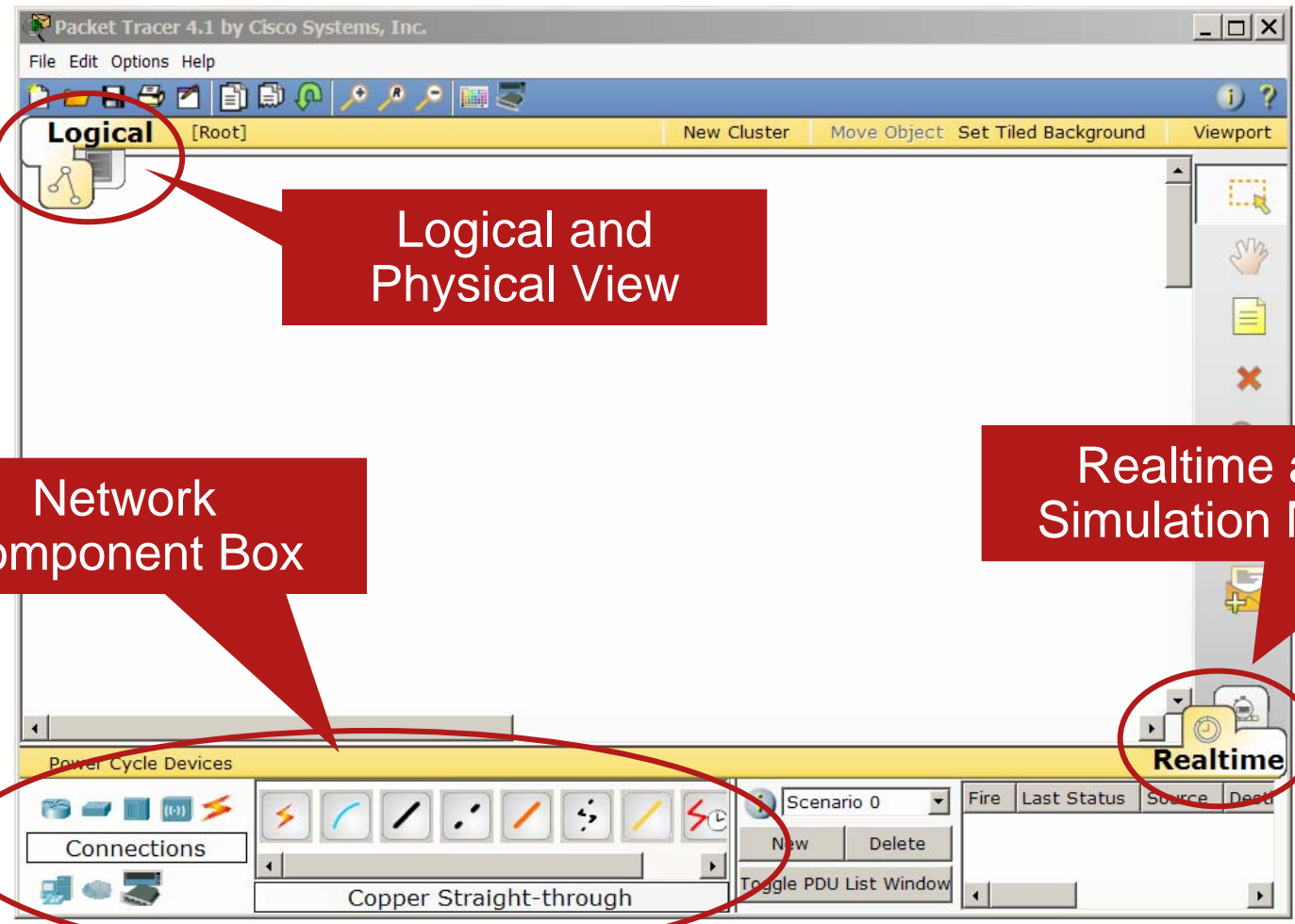


Overview of the Packet Tracer Interface



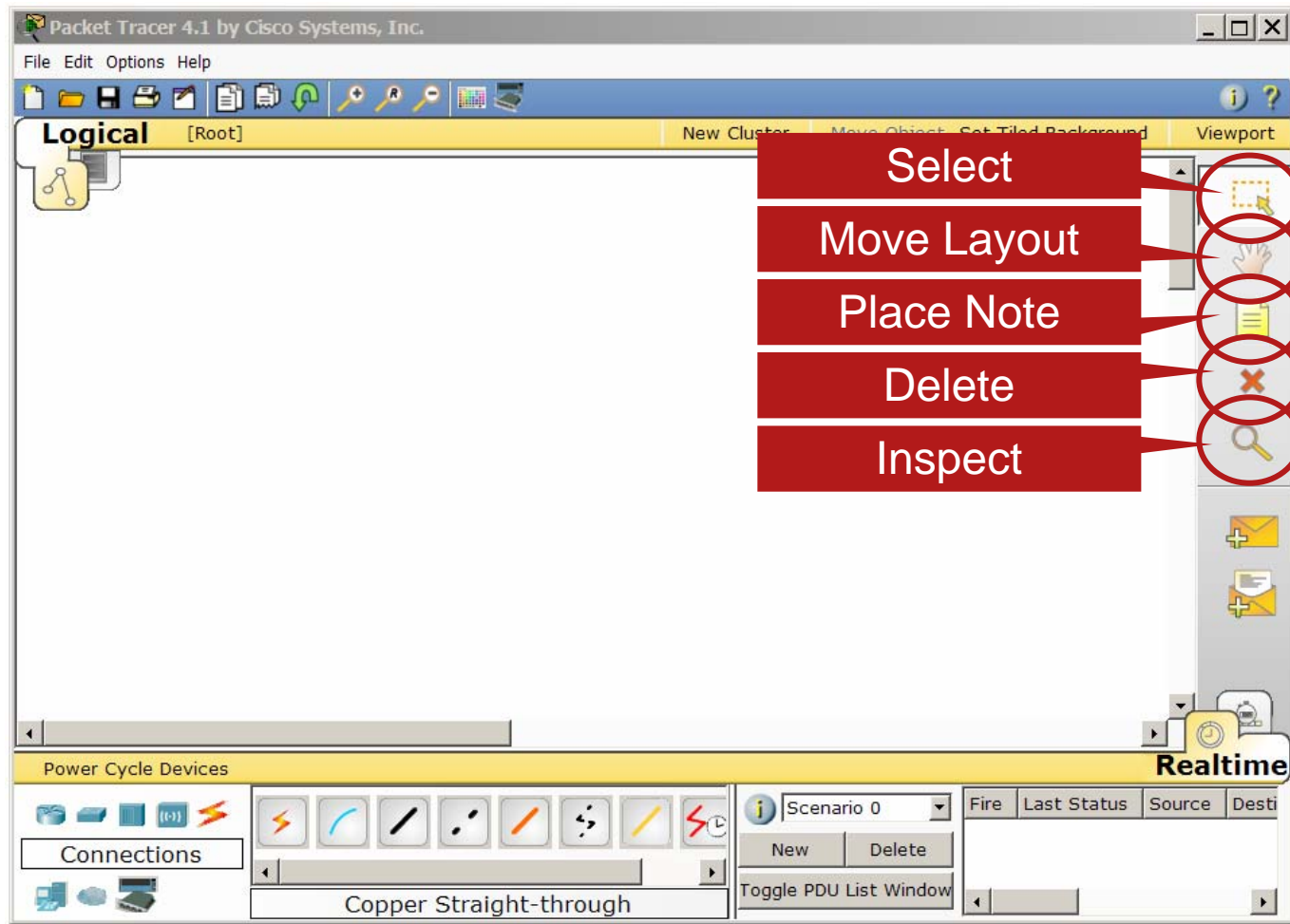


Overview of the Packet Tracer Interface



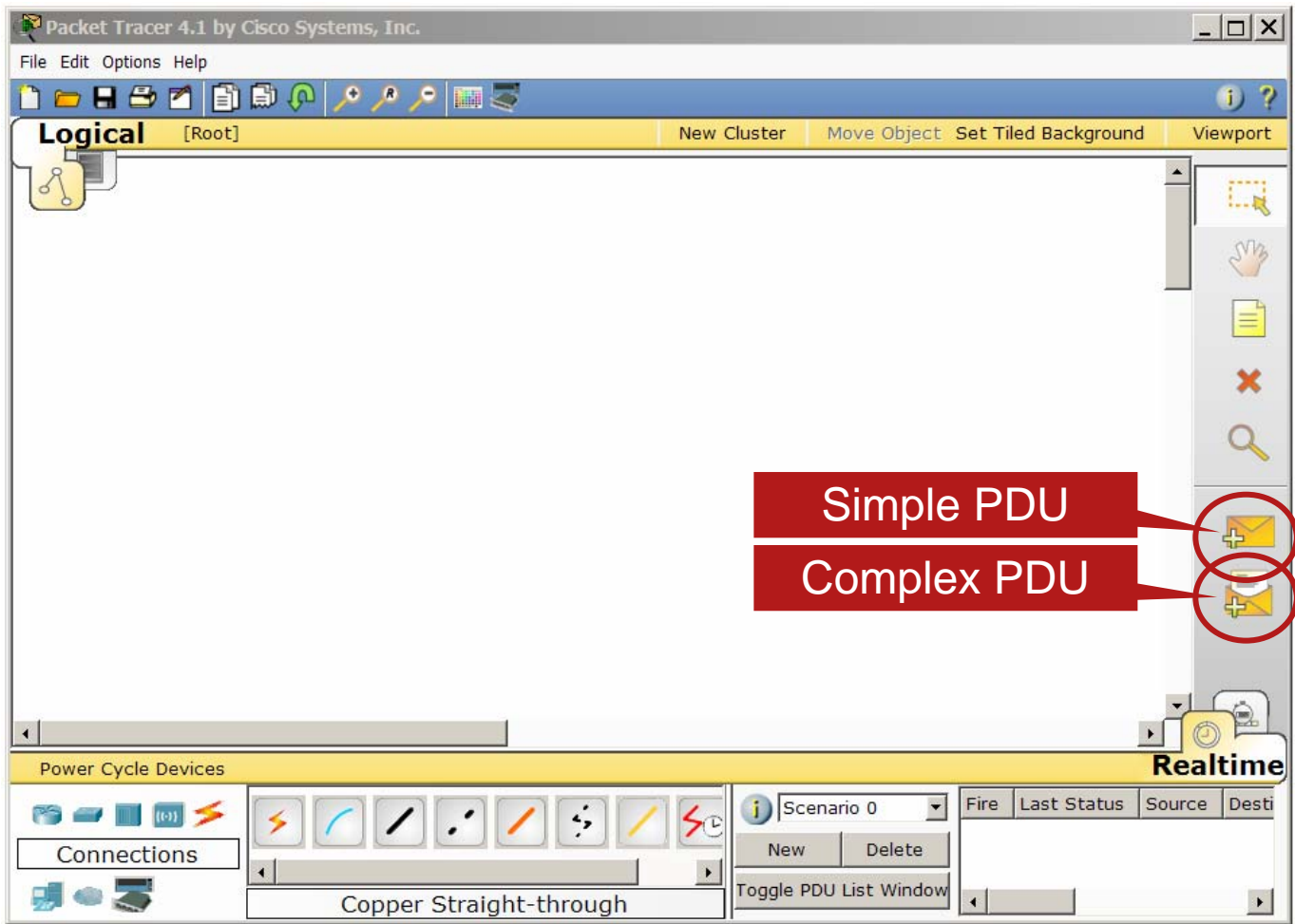


Overview of the Packet Tracer Interface



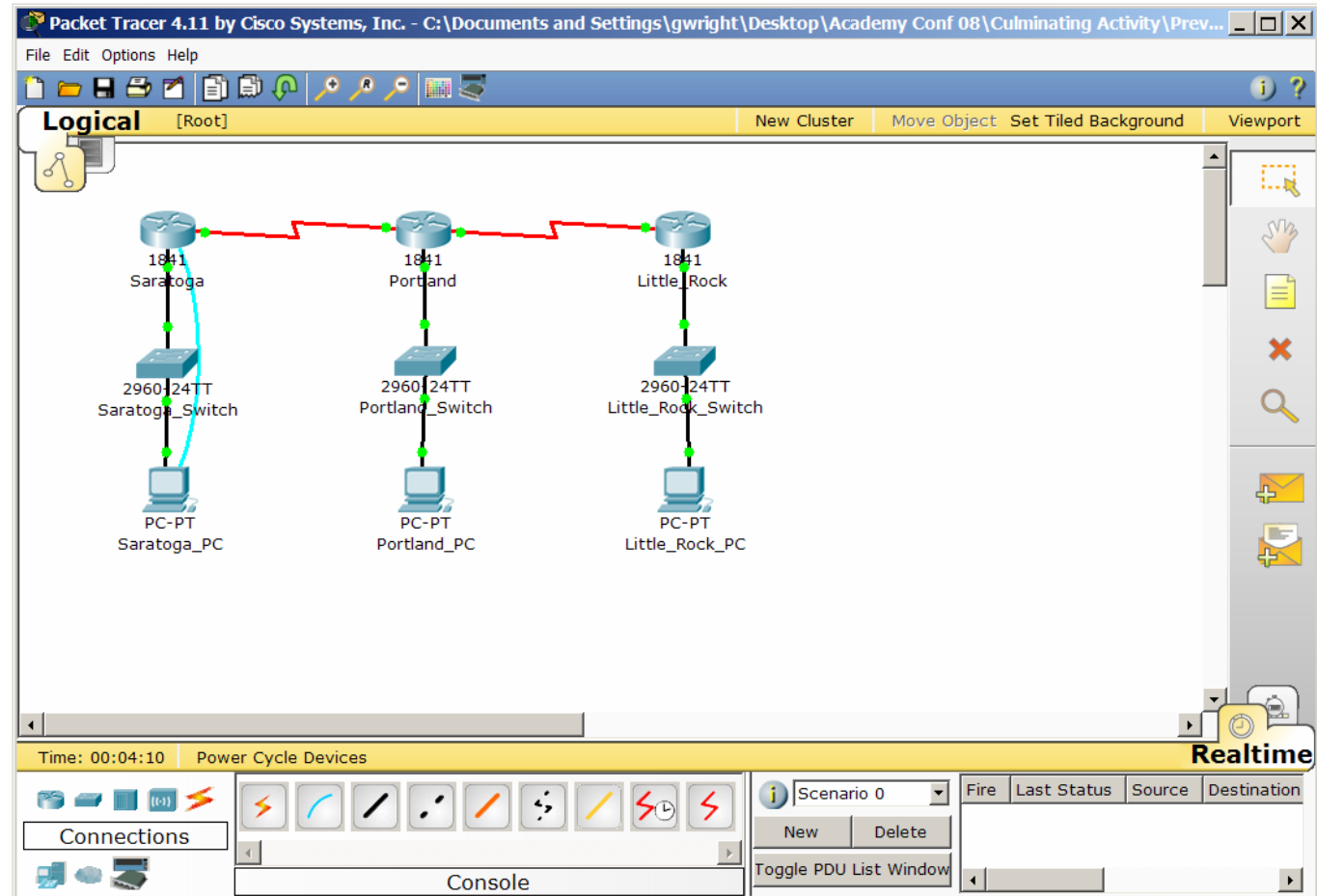


Overview of the Packet Tracer Interface

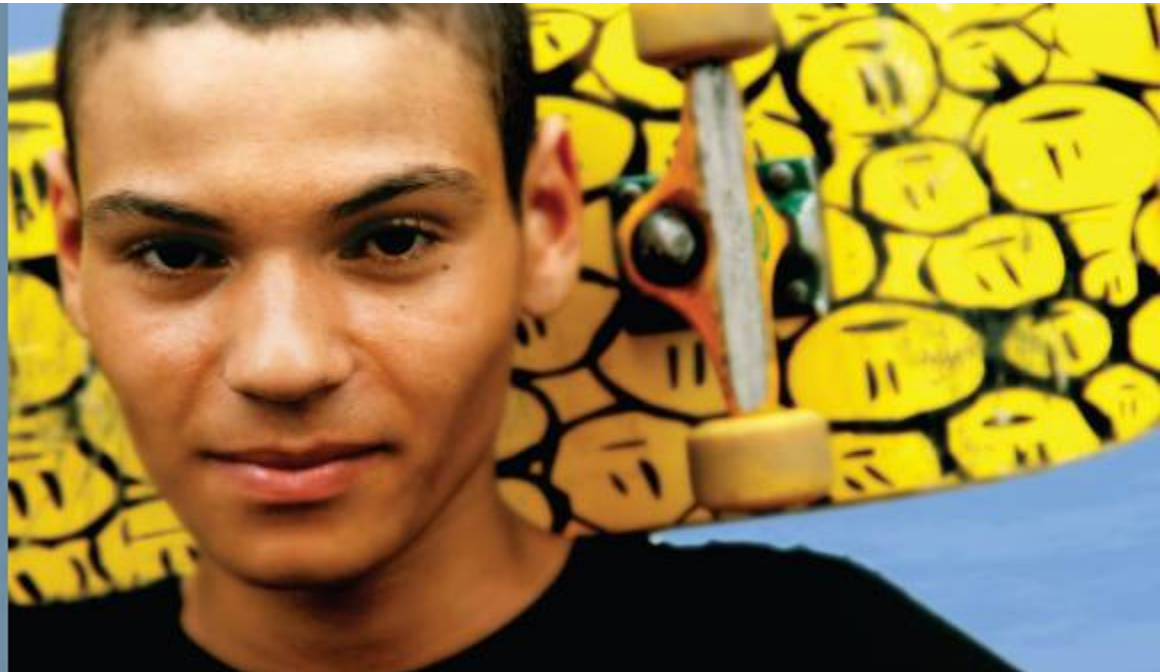


Building Simple Networks

Warm-Up
Packet Tracer
Activity
(10 min.)



Discovery 2 Activity



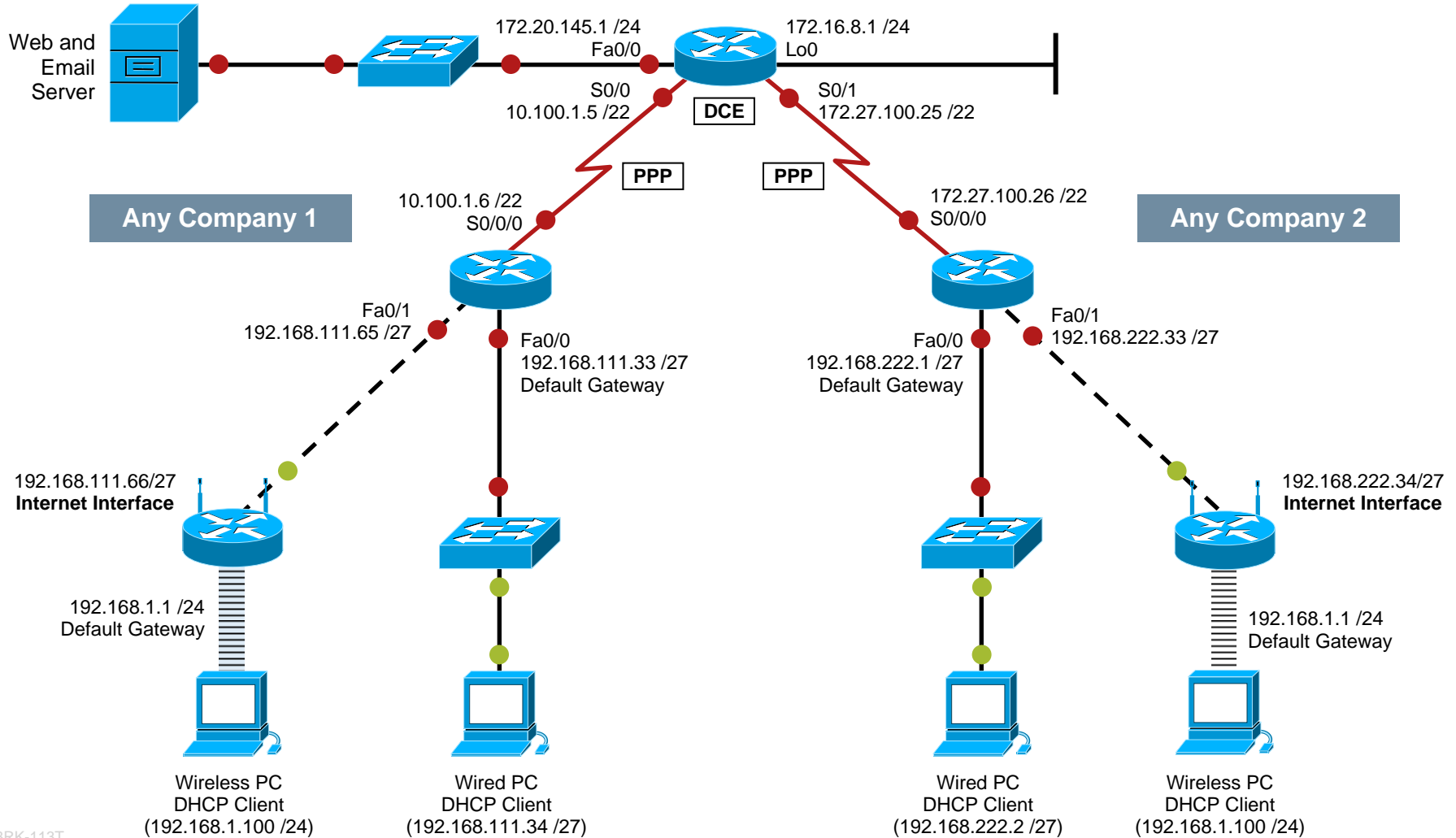
Lab 10.0.0.1 Putting It All Together

Culminating Activity from Discovery 2

- In this activity, you will complete part of the Discovery 2 Skills Based Assessment
- You will provide you with the information needed to complete the configuration in order to save time

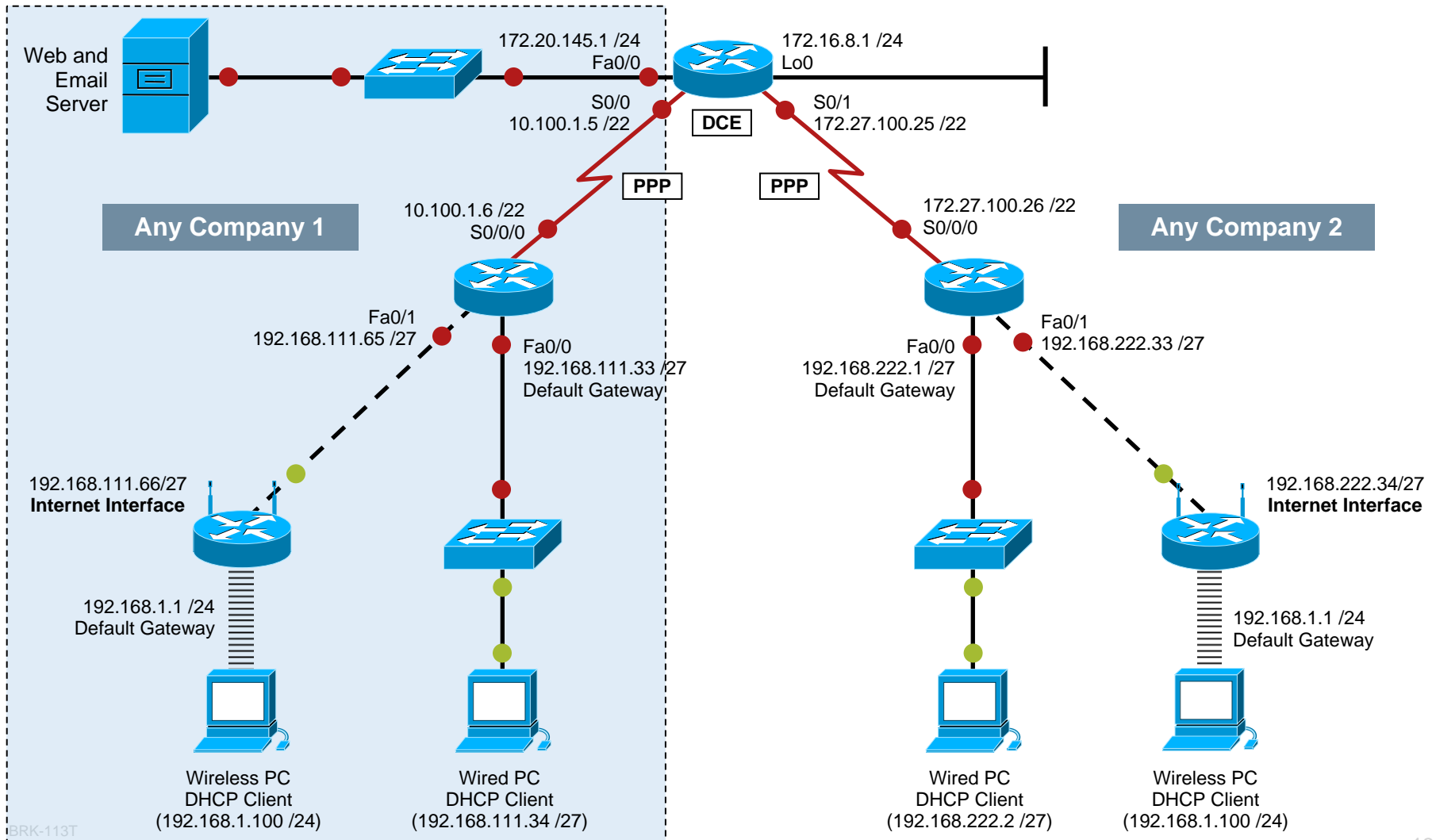
The Complete SBA Topology

CCNA Discovery 2 SBA—Network Topology



This Activity Will Focus on the Shaded Area of the Topology

CCNA Discovery 2 SBA—Network Topology



Culminating Activity from Discovery 2

- Tasks to complete:
 - Subnetting
 - Basic router configuration
 - Wireless router configuration
 - Configuring wired and wireless PCs
 - Testing connectivity
- This activity should take approximately 20 minutes

Exploration 2 Challenge Activities



Lab 1.6.1 Packet Tracer Skills Integration Challenge Lab

Culminating Activity from Exploration 1

- The Packet Tracer Skills Integration Challenge Activity for this chapter integrates all the knowledge and skills you acquired in previous courses and the first chapter of this course
- In this activity, you build a network from the ground up

Culminating Activity from Exploration 1

- Tasks to complete:
 - Subnetting
 - Basic router configuration
 - Testing connectivity
 - Investigating the Layer 2 and Layer 3 addresses used as a ping packet traverses the network you built
- This activity should take approximately 30 minutes

Exploration 2 Challenge Activities



Lab 6.5.1 Packet Tracer Skills Integration Challenge Lab

Culminating Activity from Exploration 2

- This activity focuses on subnetting skills with VLSM, basic device configuration, static routing and RIP routing
- Once you have configured all devices, you will test for end-to-end connectivity and examine your configuration

Culminating Activity from Exploration 2

- **Tasks to be completed:**
 - Design and document an addressing scheme based on requirements
 - Apply a basic configuration to the devices
 - Configure static routing between ISP routers
 - Configure RIP v2 routing in Region 1 (commands provided) and static routing Region 2
 - Disable RIP updates on appropriate interfaces
 - Configure default routes and redistribute through RIP
 - Verify full connectivity between all devices in the topology
- **This activity should take approximately 45 minutes**

Q and A



Glenn Wright ~ glwright@esc11.net

Cisco | Networking Academy[®]

Mind Wide Open[™]



CISCO