



Basic Use of Packet Tracer Version 4.11



Glenn Wright
glwright@esc11.net

Cisco | Networking Academy®
Mind Wide Open™

Think About This...

- Who has too much equipment in their lab?
- Who has extra equipment to send home with students?
- Who still has older equipment (2500 routers, 1700 routers, or 1900 switches)?

So, What Would You Be Willing or Able to Pay for:

- Newer equipment
- Virtually unlimited equipment
- Access to a variety of network equipment
- Equipment for students to take home for additional practice



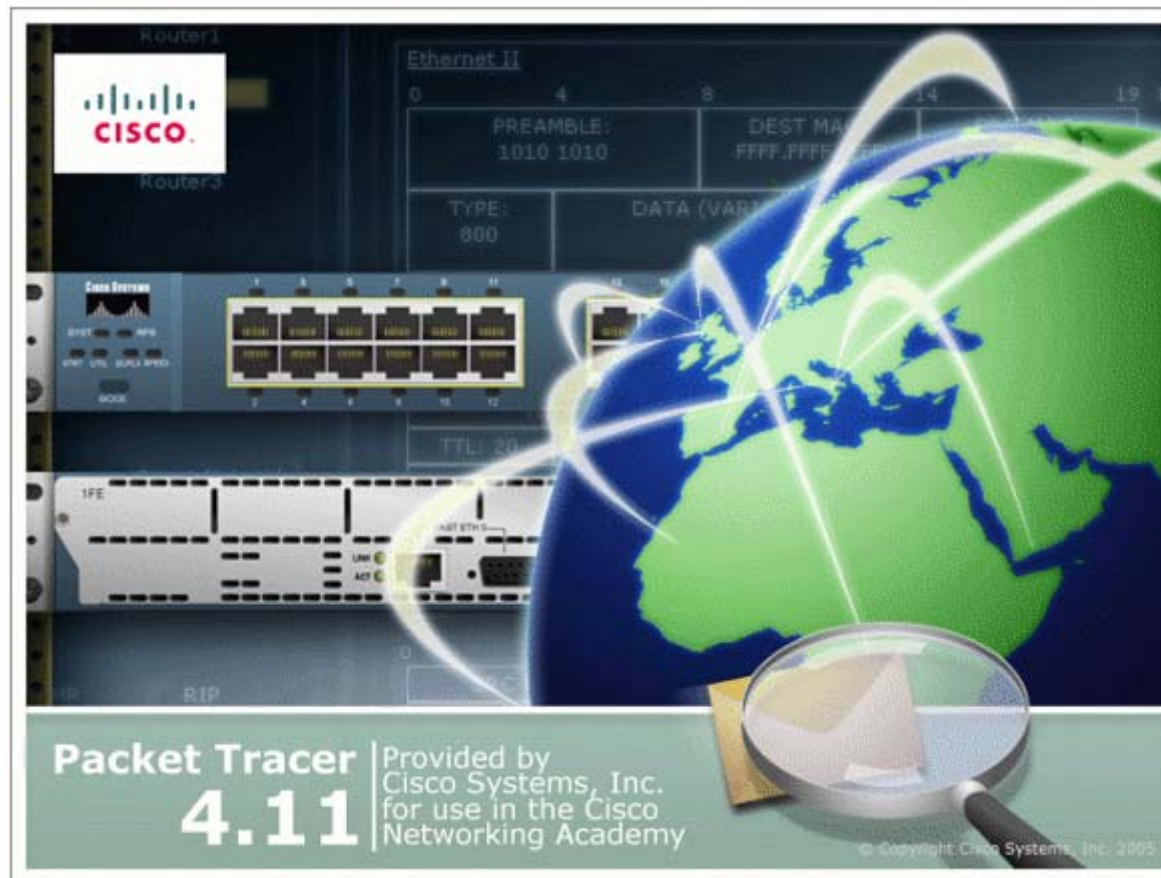
How Would You Feel if It Was Free?

Well Guess What...

- I have this!
- It is free!
- You too can have it!



It Is Packet Tracer



Basic Use of Packet Tracer, Version 4.11

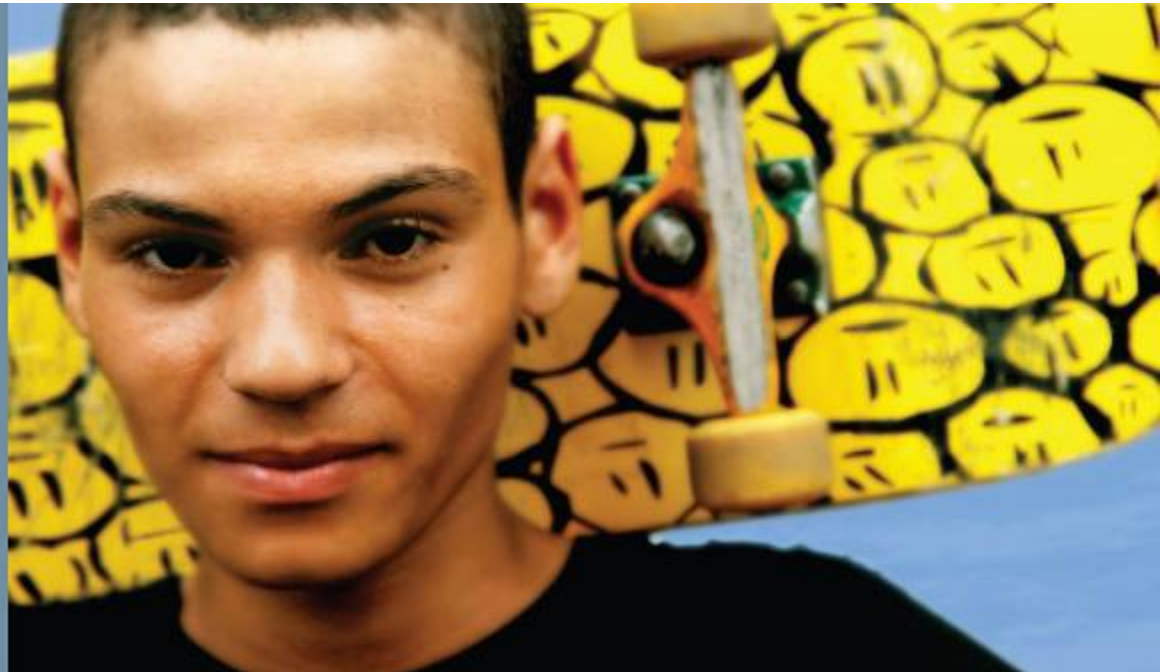
Agenda

- What is Packet Tracer?
- Overview of the Packet Tracer interface

Hands-on Activities

- Building a simple network
 - Create a simple Ethernet network using three hosts and a hub
 - Observer data flow of ARP broadcasts and ICMP packets (pings)
 - Adding routers and installing modules
- Basic router configuration (Config Mode)

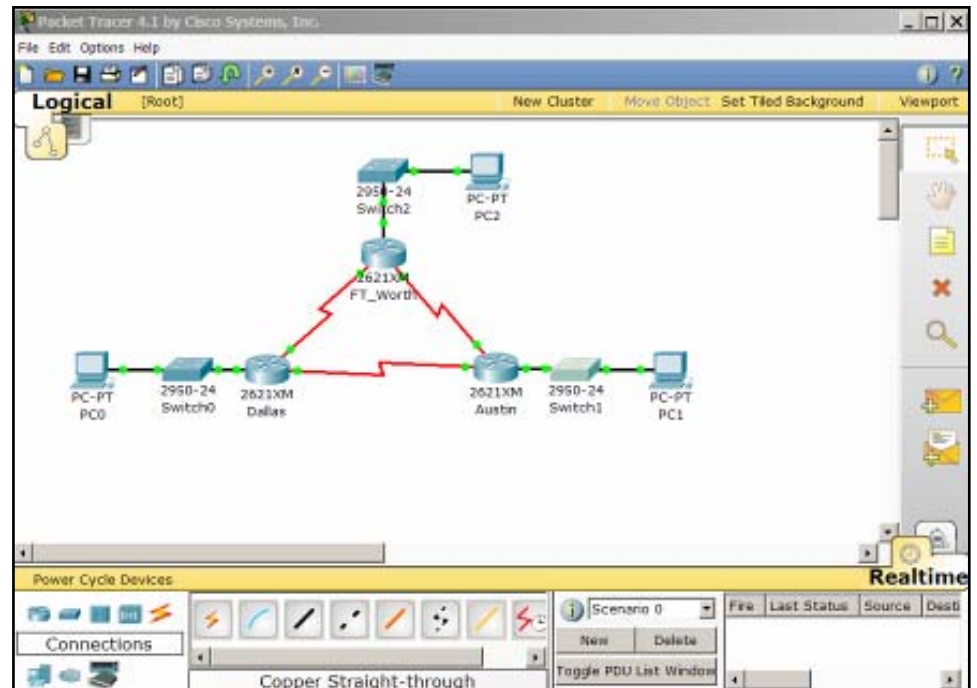
Basic Use of Packet Tracer



What Is Packet Tracer?

What Is Packet Tracer?

- Packet Tracer 4.11 can be a fun, take-home, flexible piece of software to help with CCNA studies, allowing users to experiment with network behavior and ask “what if” questions
- It is a powerful tool to enhance instruction and learning



What Is Packet Tracer?

Packet Tracer 4.11 Allows Students to:

- Construct models or virtual networks
- Develop important graphical representations of networks
- Animate networks by adding data packets
- Observe network traffic
- Practice troubleshooting skills

What Is Packet Tracer?

- Packet Tracer activities are embedded in the Discovery and Exploration curriculum
- Packet Tracer 4.11 can address most of the core target indicators in the CCNA curriculum
- The Packet Tracer application is available for instructors or students to download



The screenshot shows the Cisco Networking Academy Student Home page. At the top, there is a navigation bar with 'My Profile | Contact & Feedback | Help | Logout'. Below this is a banner with the Cisco logo and a collage of students. The main content area is divided into several sections: 'ACADEMY CONNECTION' with a 'STUDENT HOME' link; 'Learn My Classes' section featuring 'Education Service Center 11' and a 'Download' button for 'Packet Tracer'; 'Career Development' section with links for 'Business and Industry', 'Career Path Mapping', 'Education Resources', 'Industry Certifications', and 'Career Connection'; and 'Forums & Chat' section with a 'Join the Discussions' link. A right sidebar contains a search bar, 'Academy & Class Locator', 'Resources' (including AC Tutorials, Academy Marketplace, Course Catalog, Course Materials, Glossary, Library, Marketing Toolkit, and Tools), and a 'Profiles' section.

What Is Packet Tracer?

Packet Tracer May Be Used in a Variety of Ways:

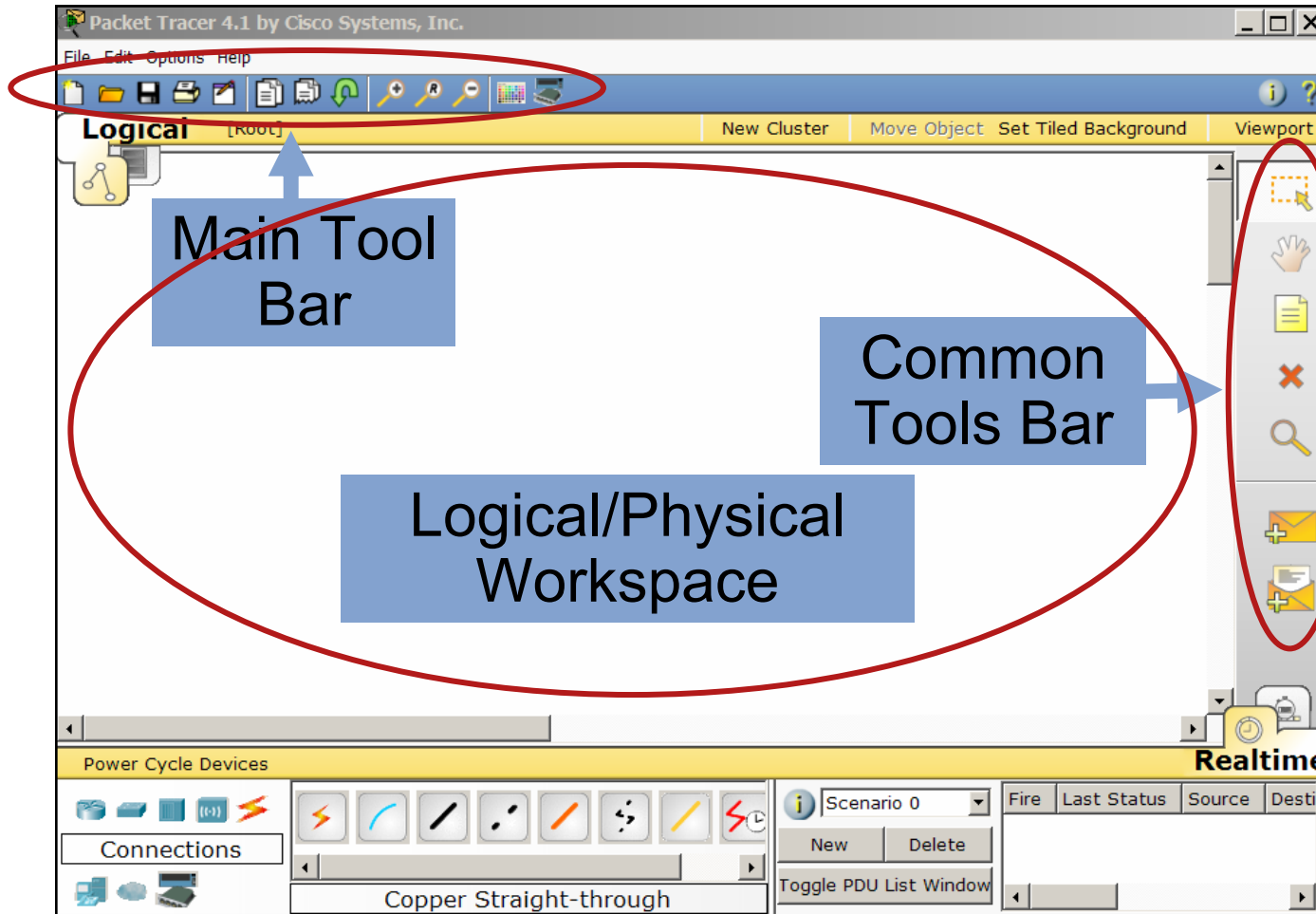
- Demonstrations
- Homework
- Hands-on lab reinforcement
- Formative assessment
- Lecture demonstrations
- Case studies
- Competitions
- Problem-solving activities in concept-building, skill-building, design, and troubleshooting

Basic Use of Packet Tracer

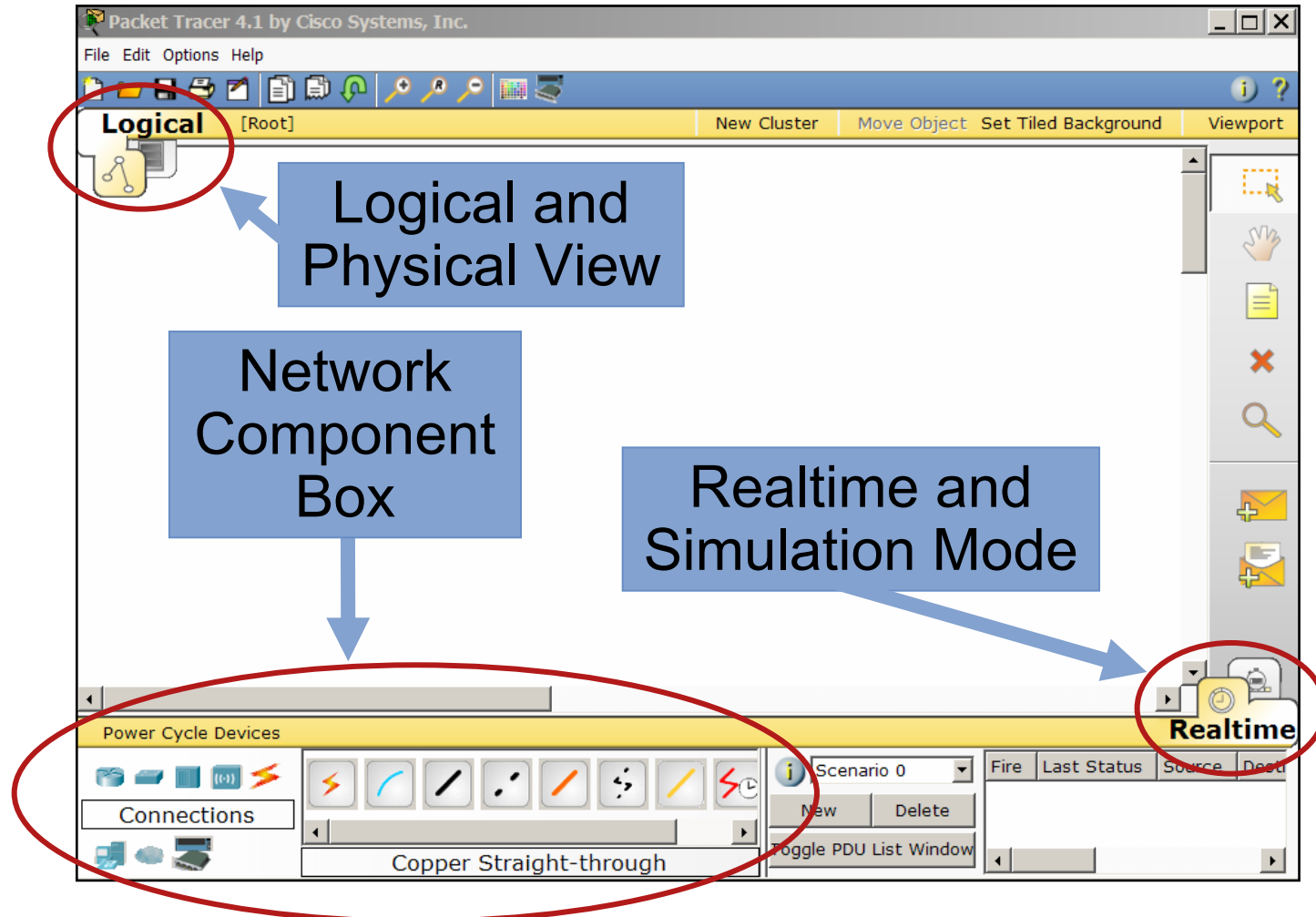


Overview of the Packet Tracer Interface

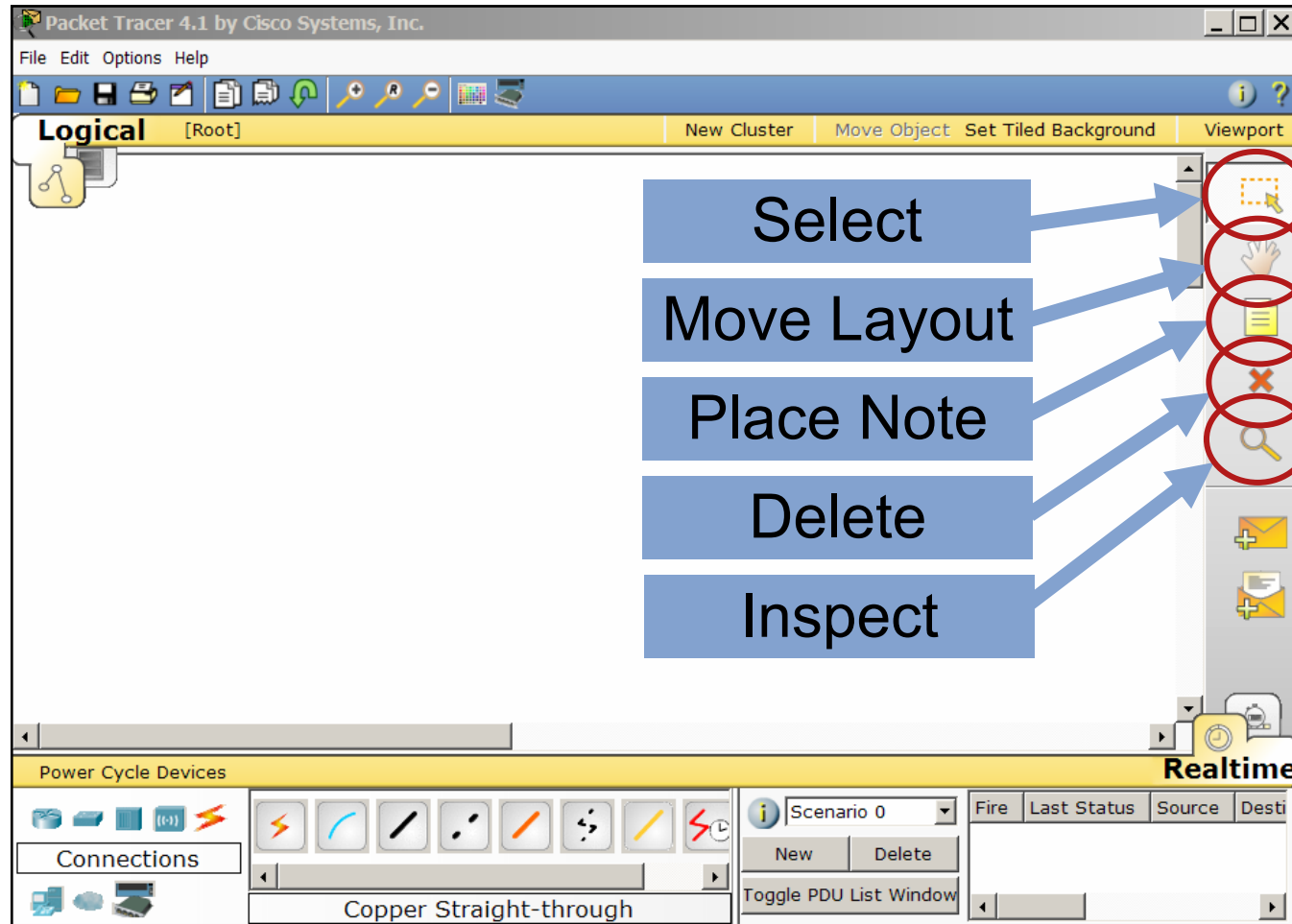
Overview of the Packet Tracer Interface



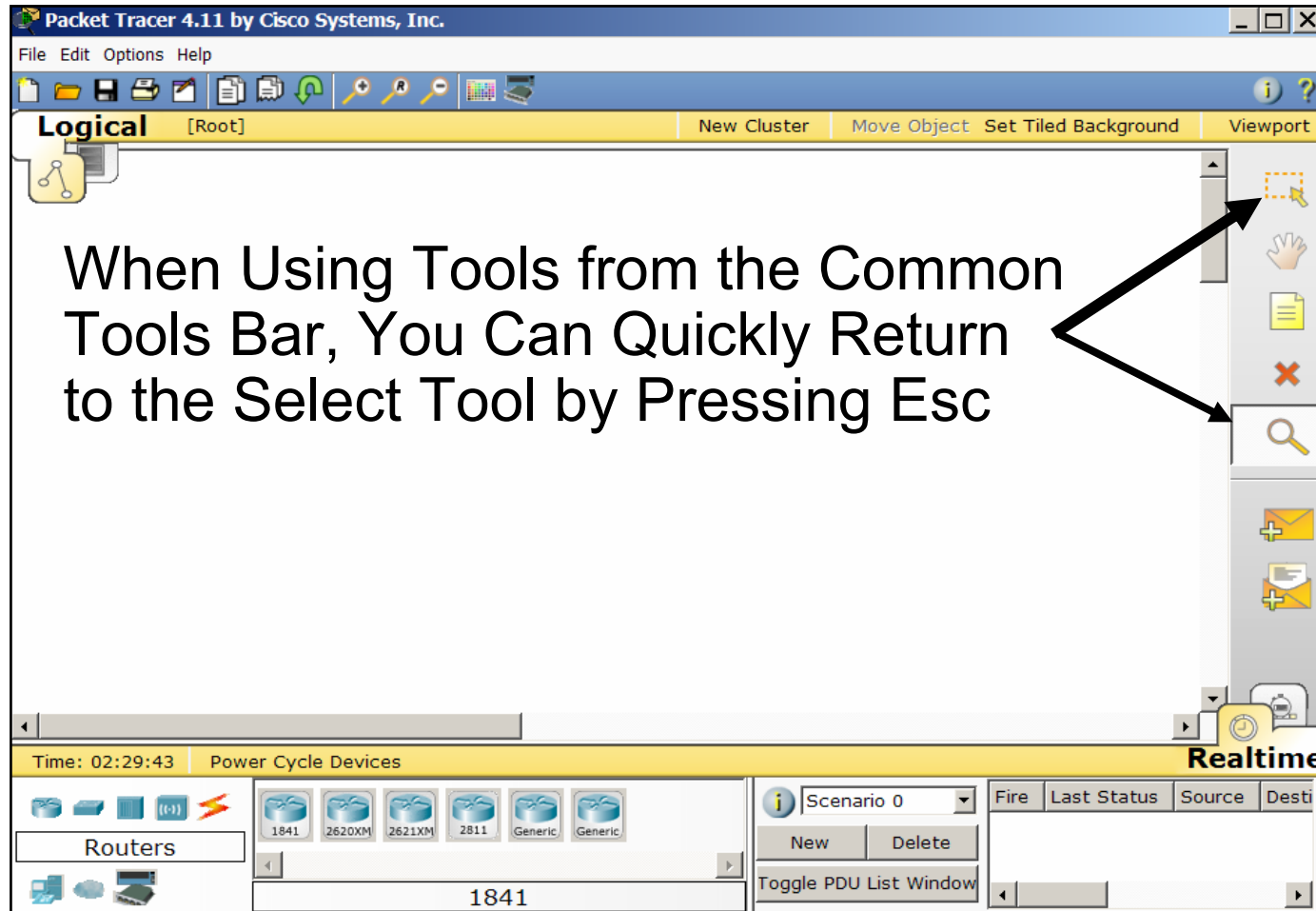
Overview of the Packet Tracer Interface



Overview of the Packet Tracer Interface



Overview of the Packet Tracer Interface



Packet Tracer 4.11 by Cisco Systems, Inc.

File Edit Options Help

Logical [Root] New Cluster Move Object Set Tiled Background Viewport

When Using Tools from the Common Tools Bar, You Can Quickly Return to the Select Tool by Pressing Esc

Time: 02:29:43 Power Cycle Devices

Routers

1841

Scenario 0

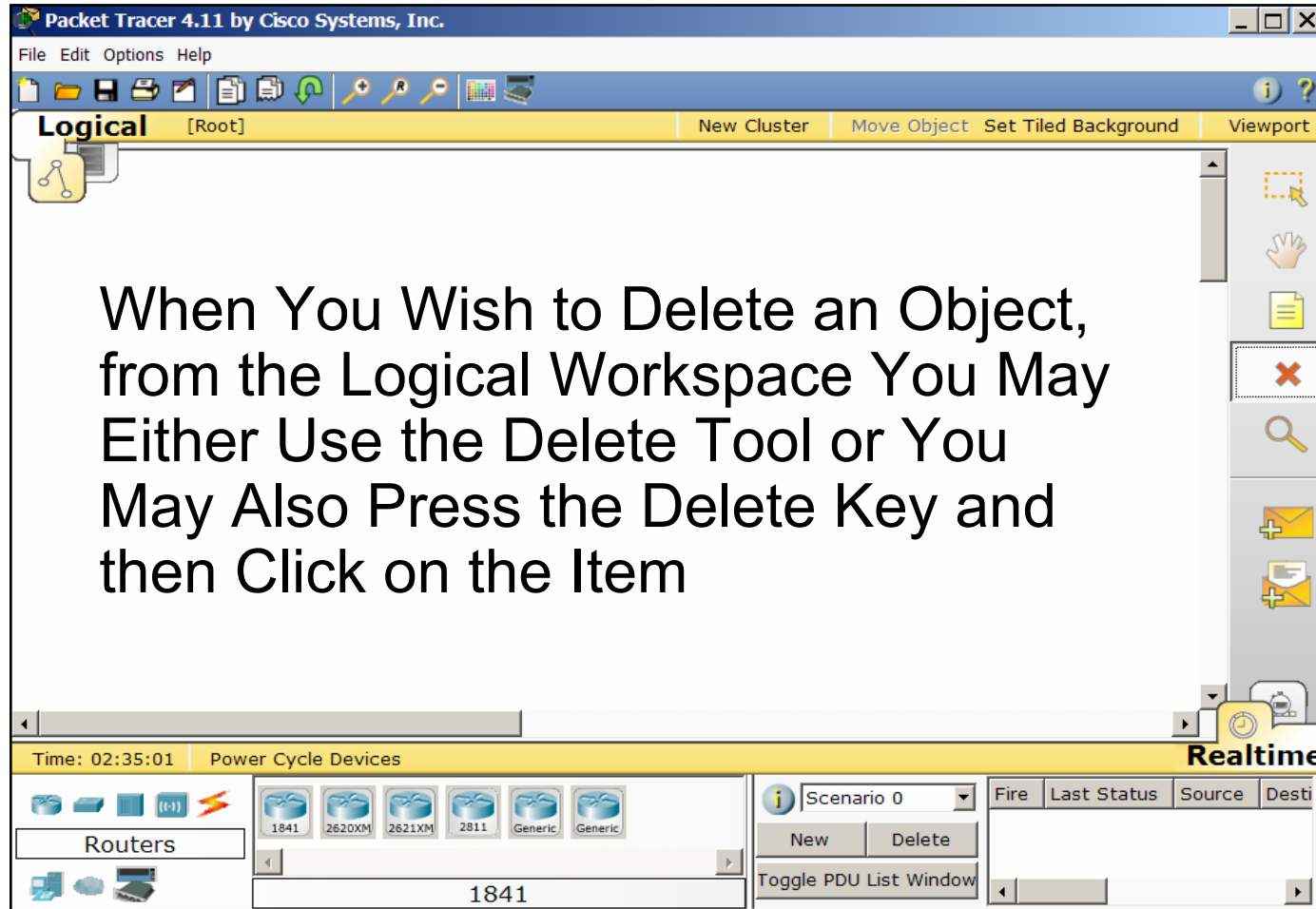
Fire Last Status Source Desti

New Delete

Toggle PDU List Window

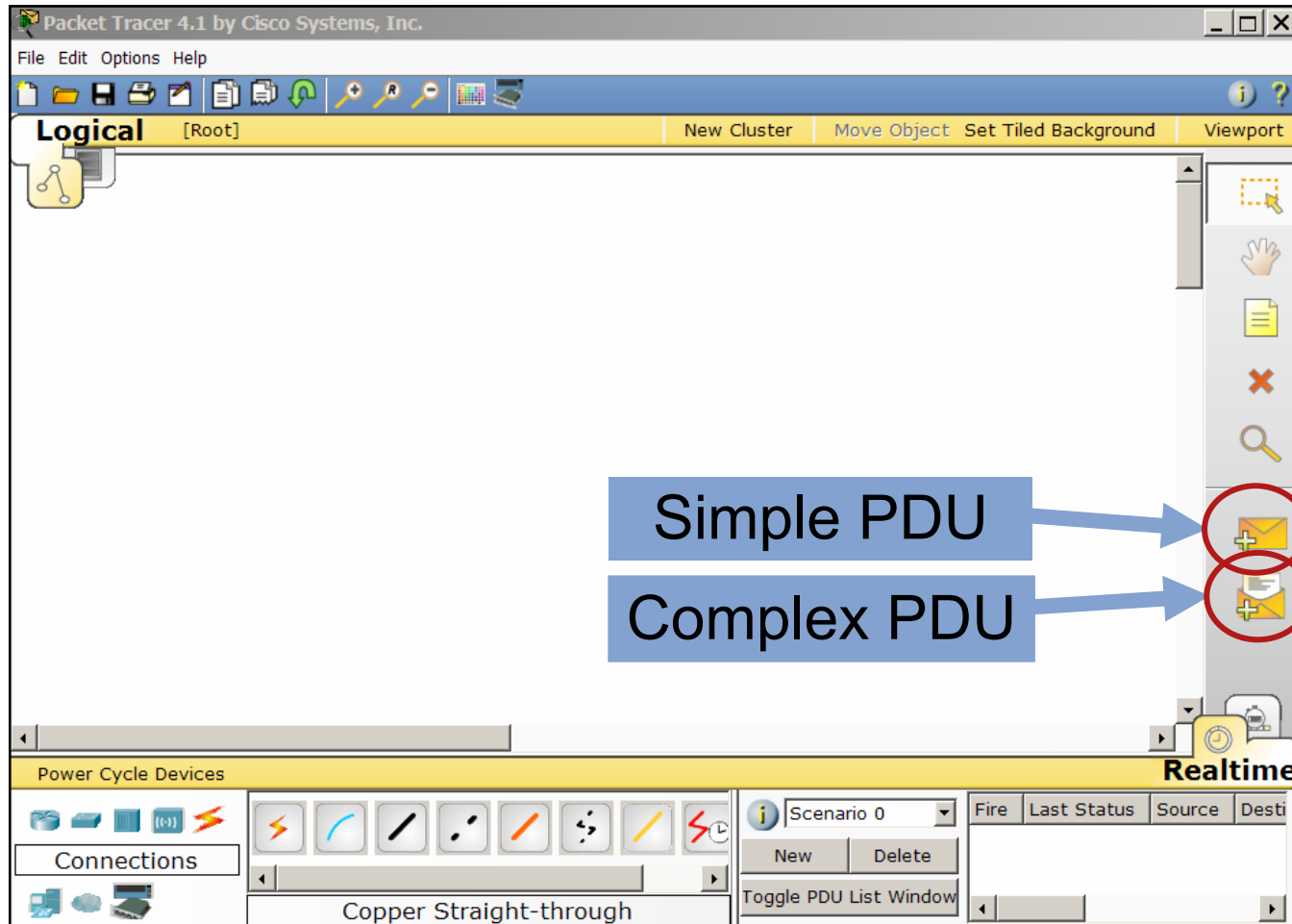
Realtime

Overview of the Packet Tracer Interface



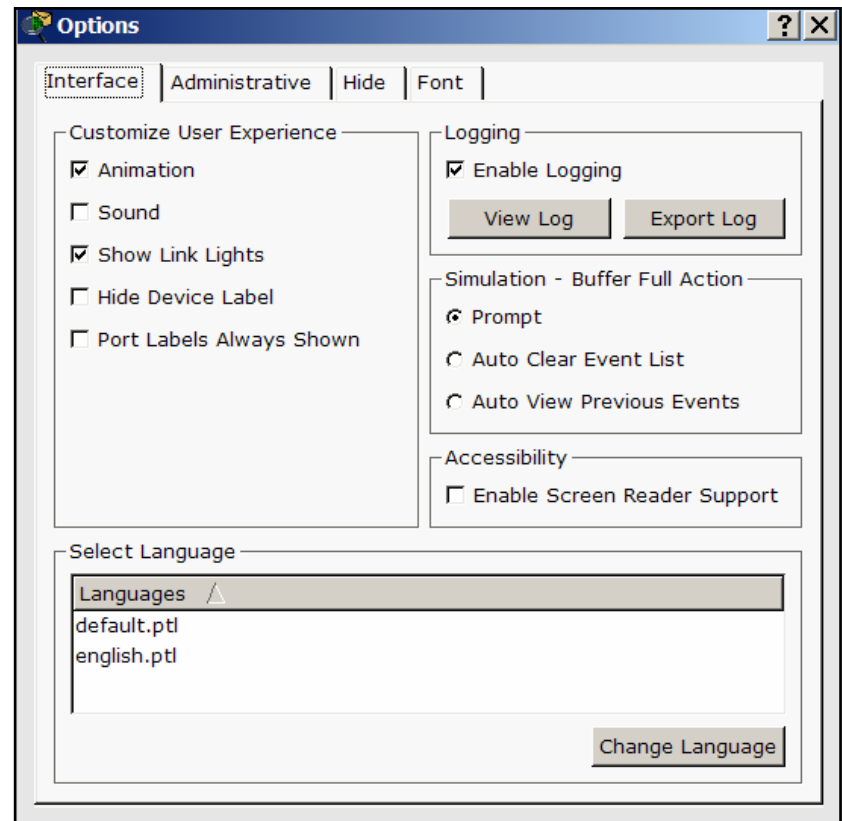
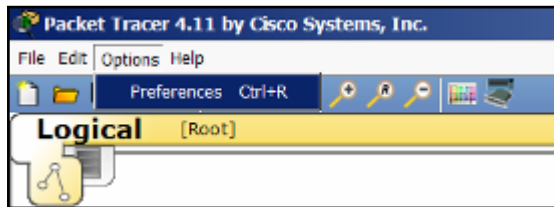
The screenshot shows the Packet Tracer 4.11 interface. The main workspace is in the 'Logical' mode, displaying a network diagram. A text overlay in the center reads: 'When You Wish to Delete an Object, from the Logical Workspace You May Either Use the Delete Tool or You May Also Press the Delete Key and then Click on the Item'. On the right side of the workspace, there is a vertical toolbar with various icons. The 'Delete' tool, represented by a red 'X' icon, is highlighted with a dashed border and an arrow pointing to it from the text 'Delete Tool' on the right. The bottom of the interface shows the 'Realtime' mode, with a 'Routers' panel containing icons for 1841, 2620XM, 2621XM, 2811, and Generic routers. A 'Scenario 0' dropdown menu is visible, along with 'New' and 'Delete' buttons, and a 'Toggle PDU List Window' button.

Overview of the Packet Tracer Interface



Setting Options in Packet Tracer

- You can customize your Packet Tracer experience by setting your own preferences
- From the **Menu** bar, select **Options**→**Preferences** to view the program settings



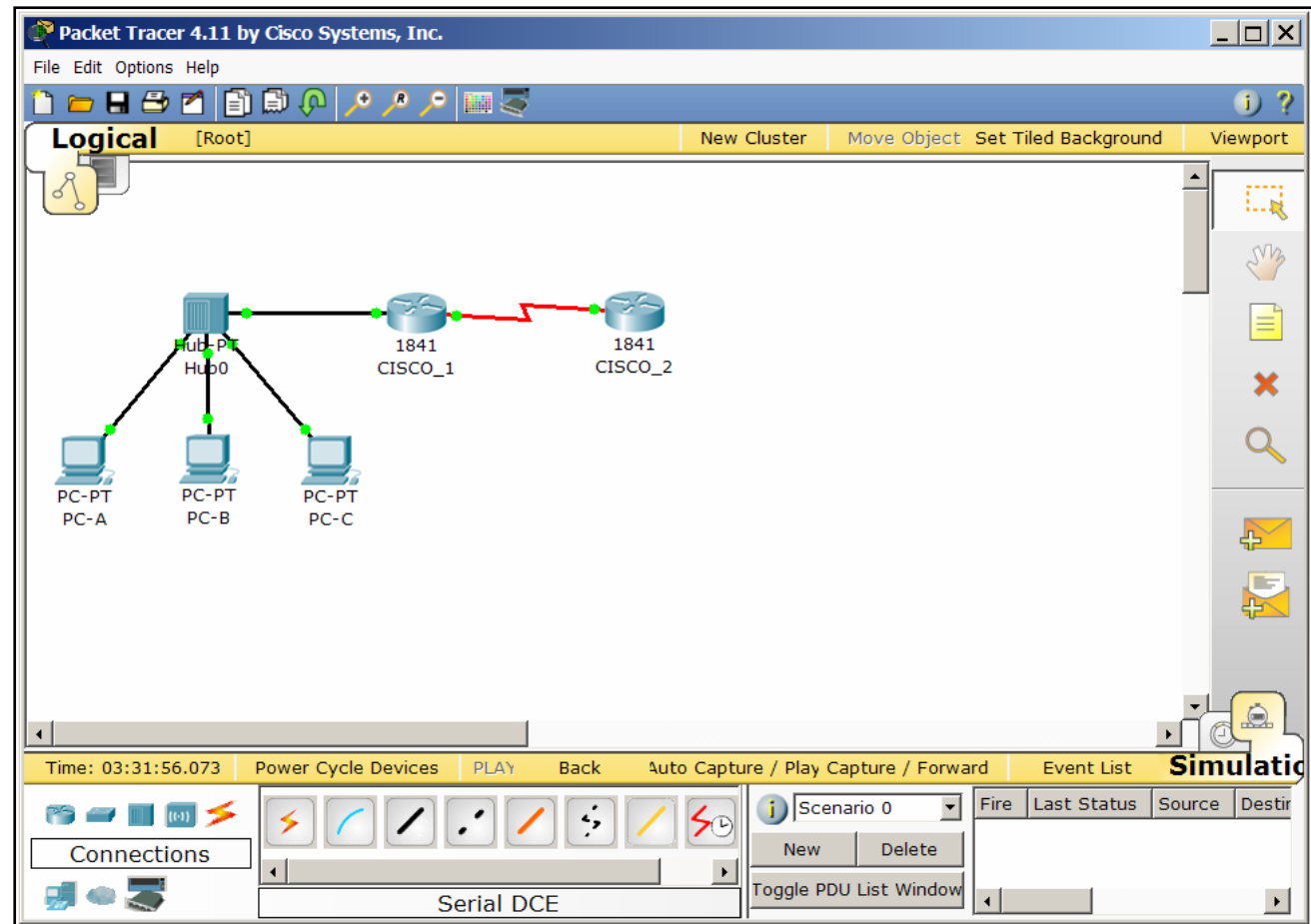
Q and A



Glenn Wright
glwright@esc11.net

Building Simple Networks

Complete the Introduction Lab Using the Provided Instructions



Cisco | Networking Academy[®]

Mind Wide Open[™]



CISCO