

Access Control List Daughter Cards for the Catalyst 8540 Platform

THE ACCESS CONTROL LIST (ACL) DAUGHTER CARDS FOR THE CATALYST[®] 8540 ARE IDEAL FOR SUPPORTING HIGH-SPEED LAYER-3 GIGABIT BACKBONE APPLICATIONS THAT REQUIRE LAYER 3 SECURITY CAPABILITIES. THE ACL DAUGHTER CARDS ARE SUPPORTED BY THE CATALYST 8540 PLATFORM, PROVIDING LARGE ENTERPRISES AND SERVICE PROVIDERS WITH BOTH LAYER 3 AND ATM SWITCHING IN ONE INTEGRATED PLATFORM.

Benefits

The access control list (ACL) daughter cards implement data-plane access lists in hardware, providing high-speed performance. This extends the traffic control and security capabilities of the Catalyst 8540 beyond control-plane access lists, which are currently supported.

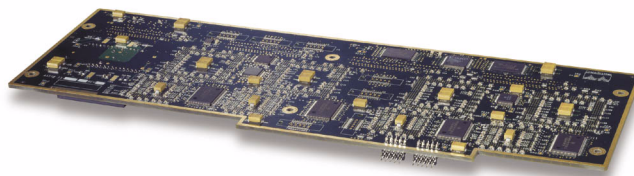
The ACL daughter cards can be used with existing 10/100-Base-TX, 100-Base-FX, and Gigabit Ethernet interface modules on the Catalyst 8540. The daughter cards provide data-plane ACL functionality for both IP and IPX traffic.

Feature Support

The Catalyst 8540 supports control-plane access lists such as: permit/deny IP/IPX routes and IPX Service Advertisement Protocol (SAP) filtering without the daughter card. The new daughter card enables data-plane ACLs for IP and IPX traffic. Listed below are the ACL features supported. For more details about specific features please see the release notes.

ACL Daughter Card Features Supported

- Standard/extended IP access lists (1–99; 1301–1999/100–199; 2000–2699) in hardware; both inbound and outbound
- Named access lists
- Standard IPX access lists (800–899) without source node; both inbound and outbound
- All Cisco IOS[®] ACLs for control-plane traffic

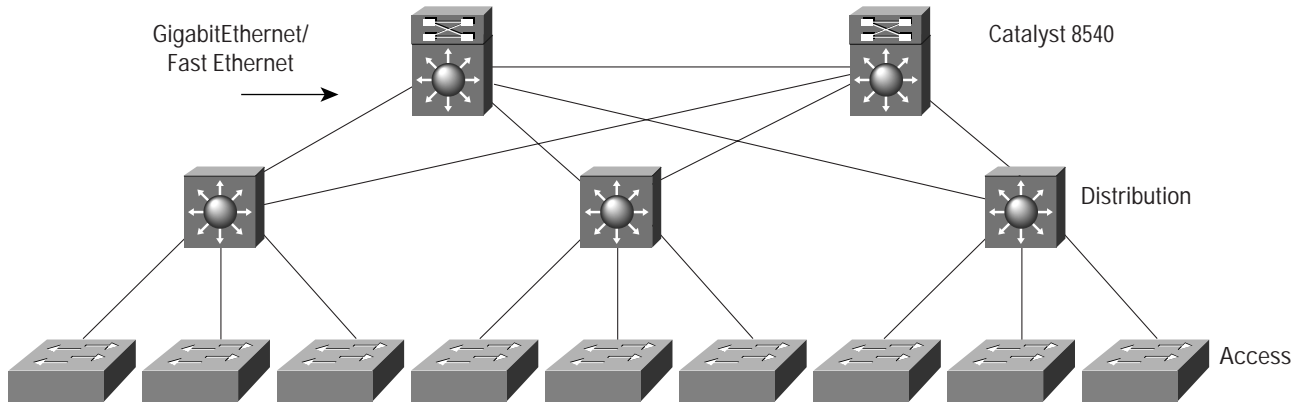


Applications

The ACL daughter card can be used to limit/grant access to certain network resources by filtering traffic based on

the Layer 3 header. It is designed specifically to meet the demanding needs of large enterprise and service provider networks. Figure 1 shows the Catalyst 8540 in an enterprise core network.

Figure 1 Enterprise Core Network



Specifications

Physical Specification

- Occupies one slot in the Catalyst 8540 platform
- Dimensions (H x W x D): 1.2 x 14.4 x 16.0 in. (3.0 x 36.6 x 40.6 cm)

Safety Compliance

Catalyst 8540 ACL daughter cards, when installed in a system, comply with the following compliance and safety standards:

- UL 1950
- CSA C22.2 No.950
- EN 60825-1
- EN60950
- IEC 950
- IEC 60825-1
- TS 001
- CE marking
- AS/NZS 3260
- 21CFR1040
- Network Equipment Building Systems (NEBS) Level 3

EMC Compliance

Catalyst 8540 ACL daughter cards, when installed in a system, comply with the following EMI standards:

- FCC Part 15 (CFR 47) Class A
- VCCI Class B
- EN55022 Class B
- CISPR 22 Class B
- CE marking
- AS/NZS 3548 Class B

Network Management

- CiscoWorks
- Simple Network Management Protocol (SNMP)
- ETHERLIKE-MIB (RFC 1643)
- IF-MIB (RFC 1573)
- MIB II (RFC1213)

Ordering Information

Table 1 Required Software

Platform	Software Release	Product Code
Catalyst 8540 CSR	12.0(4a)Wx5(11a)	S854R3-12.0.4W or higher
Catalyst 8540 MSR	12.0(4a)W5(11a)	S854R2-12.0.4W or higher

Table 2 Product Availability and Part Numbers

Part Number	Product Description	Availability
C8540-ACL=	C8540 ACL Daughter Card (spare)	Now

The ACL daughter card can be used with the layer 3 line cards listed in the Table 3.

Table 3 Compatible Catalyst 8540 Layer 3 Interface Modules

Part Number	Product Description
Catalyst 8540 Layer 3 Interface Modules	
Gigabit Ethernet Interface Modules	
C85GE-2X-16K	C8540 2-port Gigabit Ethernet 16K
C85GE-2X-64K	C8540 2-port Gigabit Ethernet 64K
Fast Ethernet Interface Modules	
C85FE-16T-16K	C8540 16 Port 10/100 UTP 16K
C85FE-16T-64K	C8540 16 Port 10/100 UTP 64K
C85FE-16F-16K	C8540 16-port 100-FX MT-RJ 16K
C85FE-16F-64K	C8540 16 Port 100-FX MT-RJ 64K

The ACL daughter cards can also be ordered pre-installed on the Layer 3 interface modules using the part numbers in Table 4.

Table 4 Catalyst 8540 Layer 3 Interface Modules with ACL

Part Number	Product Description
Catalyst 8540 Layer 3 Interface Modules	
Gigabit Ethernet Interface Modules	
C85GE-2XACL-16K	C8540 2-port Gigabit Ethernet 16K with ACL
C85GE-2XACL-64K	C8540 2-port Gigabit Ethernet 64K with ACL
Fast Ethernet Interface Modules	
C85FE-16TACL-16	C8540 16 Port 10/100 UTP 16K with ACL
C85FE-16TACL-64K	C8540 16 Port 10/100 UTP 64K with ACL
C85FE-16FACL-16K	C8540 16-port 100-FX MT-RJ 16K with ACL
C85FE-16FACL-64K	C8540 16 Port 100-FX MT-RJ 64K with ACL



Corporate Headquarters
Cisco Systems, Inc.
170 West Tasman Drive
San Jose, CA 95134-1706
USA
<http://www.cisco.com>
Tel: 408 526-4000
800 553-NETS (6387)
Fax: 408 526-4100

European Headquarters
Cisco Systems Europe
11, Rue Camille Desmoulins
92782 Issy Les Moulineaux
Cedex 9
France
<http://www-europe.cisco.com>
Tel: 33 1 58 04 60 00
Fax: 33 1 58 04 61 00

Americas
Headquarters
Cisco Systems, Inc.
170 West Tasman Drive
San Jose, CA 95134-1706
USA
<http://www.cisco.com>
Tel: 408 526-7660
Fax: 408 527-0883

Asia Headquarters
Nihon Cisco Systems K.K.
Fuji Building, 9th Floor
3-2-3 Marunouchi
Chiyoda-ku, Tokyo 100
Japan
<http://www.cisco.com>
Tel: 81 3 5219 6250
Fax: 81 3 5219 6001

Cisco Systems has more than 200 offices in the following countries. Addresses, phone numbers, and fax numbers are listed on the

Cisco Connection Online Web site at <http://www.cisco.com/go/offices>.

Argentina • Australia • Austria • Belgium • Brazil • Canada • Chile • China • Colombia • Costa Rica • Croatia • Czech Republic • Denmark • Dubai, UAE
Finland • France • Germany • Greece • Hong Kong • Hungary • India • Indonesia • Ireland • Israel • Italy • Japan • Korea • Luxembourg • Malaysia
Mexico • The Netherlands • New Zealand • Norway • Peru • Philippines • Poland • Portugal • Puerto Rico • Romania • Russia • Saudi Arabia • Singapore
Slovakia • Slovenia • South Africa • Spain • Sweden • Switzerland • Taiwan • Thailand • Turkey • Ukraine • United Kingdom • United States • Venezuela

Copyright © 2000, Cisco Systems, Inc. All rights reserved. Catalyst, Cisco, Cisco IOS, Cisco Systems, the Cisco Systems logo, and LightStream are registered trademarks of Cisco Systems, Inc. or its affiliates in the U.S. and certain other countries. All other trademarks mentioned in this document are the property of their respective owners. The use of the word partner does not imply a partnership relationship between Cisco and any of its resellers. (9912R) 04/00 LW