



How to Configure the Reboot DMP System Task From the Management Dashboard

Revised: May 16, 2016
Software Release: 3.0 and Later Releases

Quick Facts

This task note describes how to configure the periodic Reboot DMP Task to run the DMP or switch command automatically.

- To avoid unexpected behavior and maintain normal operation of your devices, it is highly recommended that you perform a soft reboot of all of the DMPs in your system regularly.
- The Reboot DMP Task applies globally to all DMPs. When the recommended reboot interval is different by DMP model, be sure to set the reboot task to meet the shortest time interval.

For example, in releases prior to Release 4.0, a weekly reboot is recommended for all media players. However, in Release 4.1.0-419, a weekly reboot is recommended only for the Cisco DMP 4310G and SV-4K—rebooting the DMP-2K is recommended every *5 days*. Therefore, if using the reboot task in a venue that uses DMP-2Ks, the reboot period should be configured for 120 hours.

For information about recommended media player maintenance for your release, see the [Release Notes](#) documentation.

- There are a few methods that you can use to reboot DMPs:



Note Before you perform a reboot, be sure that there are not any active scripts running.

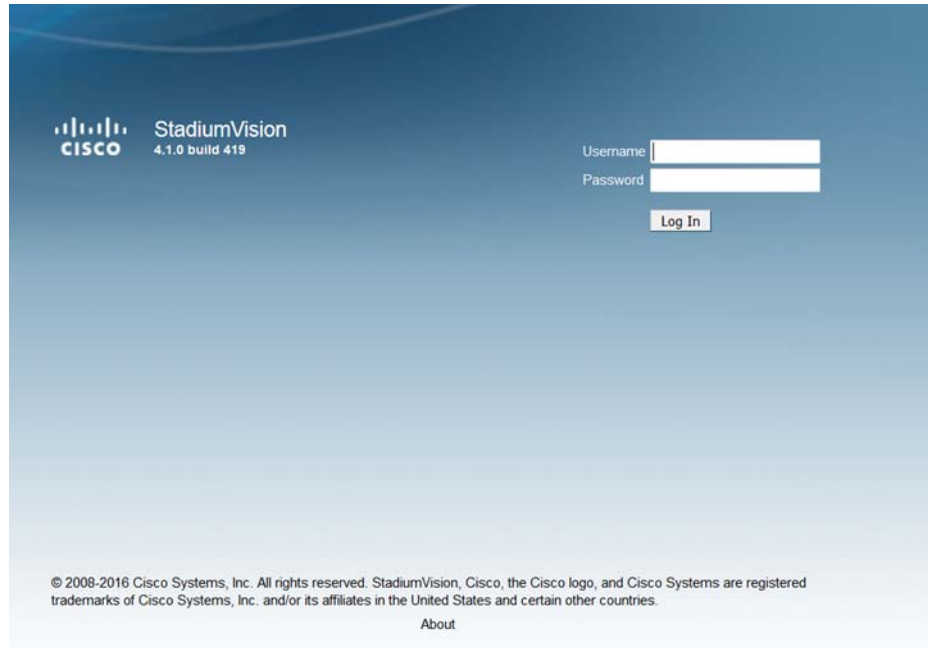
- Reboot DMPs manually from the Management Dashboard using the following command:
DMP and TV Controls > DMP Commands > Reboot Device
- Power cycle the DMP manually from the switch using the following command:
DMP and TV Controls > Switch Commands > Power Cycle DMP
- Enable a system task to run periodically to reboot DMPs after they have been running for a specified number of hours (default is 336). The default start time is 03:00 a.m.

Task

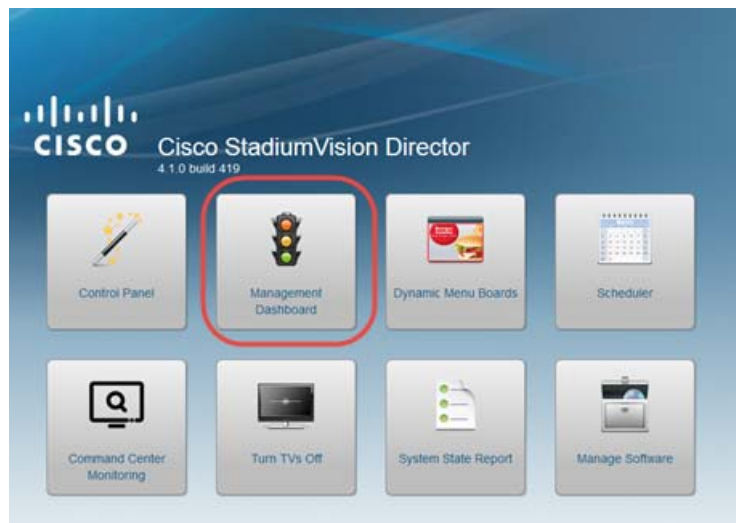
To configure the Reboot DMP Task from the Management Dashboard, complete the following steps:

Action

Step 1 Log into Cisco StadiumVision Director with an administrator account.

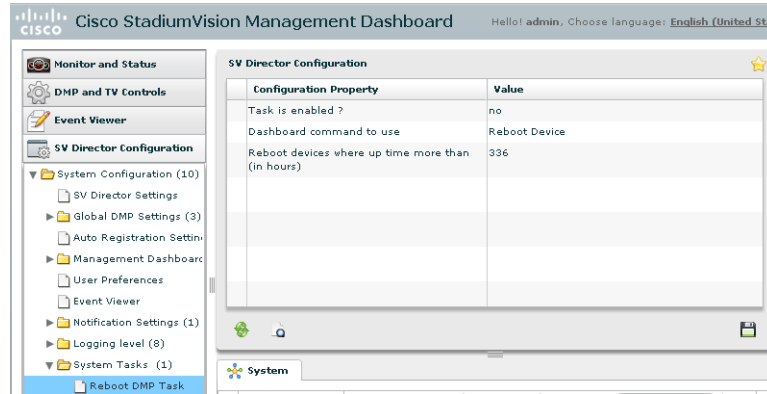


Step 2 From the Cisco StadiumVision Director main menu, click **Management Dashboard**.



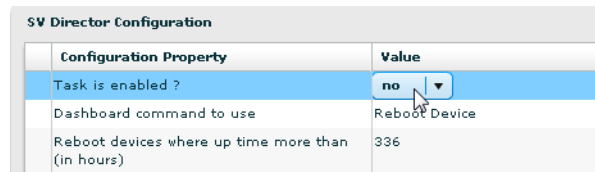
Action

- Step 3** Under the **SV Director Configuration** drawer, go to **System Configuration > System Tasks > Reboot DMP Task**.



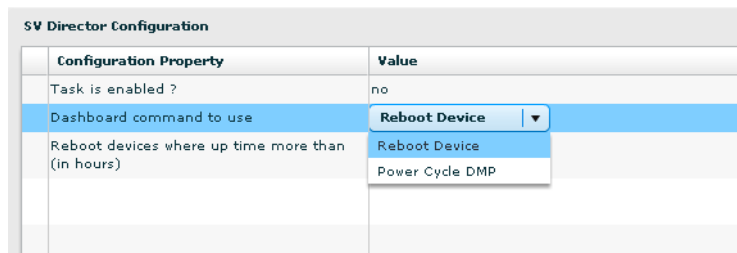
- Step 4** (Required) In the Configuration Property box, change the **Task is enabled?** value to **yes**.

Tip Click the current value to reveal the arrow selector. Click the arrow and choose **yes**.



- Step 5** (Optional) In the Configuration Property box, set the Dashboard command value to specify either:

- **Reboot Device**—Reboots the DMP using the DMP management software. This is the default.
- **Power Cycle DMP**—Power cycles the DMP from the switch.



Action

Step 6 (Recommended) In the Configuration Property box, change the value of the **Reboot devices where up time more than (in hours)**, which specifies the number of hours that DMPs can run continuously before a reboot occurs.

Set this to the number of runtime hours that corresponds to the minimum recommended reboot period for all of the types of DMPs at your site and that avoids any timing that will conflict with event times. Default is 336 hours (14 days).

Note No active scripts should be running during a DMP reboot.

Step 7 Click the Refresh icon to accept the changes to the property values.

Step 8 (Optional) To change the default start time (03:00) of a scheduled reboot when the DMP Reboot Task is enabled, go to **Tools > Advanced > Scheduled Tasks**.

1. Find the **HPMRebootTask**.
2. In the Task Time box, specify the time (in 24-hour military format) when you want the DMP reboot to start
3. Click **Apply**.

Scheduled Task Data

Task ID	Task Type	Task Time	Servers
19	LanguagePackPollT	periodic-5-seconds	config
2	UpdateTicker	periodic	config
20	VisitorPinRefreshTa	05:00	config
21	HPMRebootTask	03:00	config
22	LanguagePackCont	periodic-5-seconds	control,tall

Cisco and the Cisco logo are trademarks or registered trademarks of Cisco and/or its affiliates in the U.S. and other countries. To view a list of Cisco trademarks, go to this URL: www.cisco.com/go/trademarks. Third-party trademarks mentioned are the property of their respective owners. The use of the word partner does not imply a partnership relationship between Cisco and any other company. (1110R)

Any Internet Protocol (IP) addresses and phone numbers used in this document are not intended to be actual addresses and phone numbers. Any examples, command display output, network topology diagrams, and other figures included in the document are shown for illustrative purposes only. Any use of actual IP addresses or phone numbers in illustrative content is unintentional and coincidental.

© 2012–2016 Cisco Systems, Inc. All rights reserved.