



# The Connected Life enabled by 'Linksys by Cisco'

**Andrej Petreski – CBG Regional Channel Account  
Manager (Adriatics & Bulgaria)**

**26.11.2008**

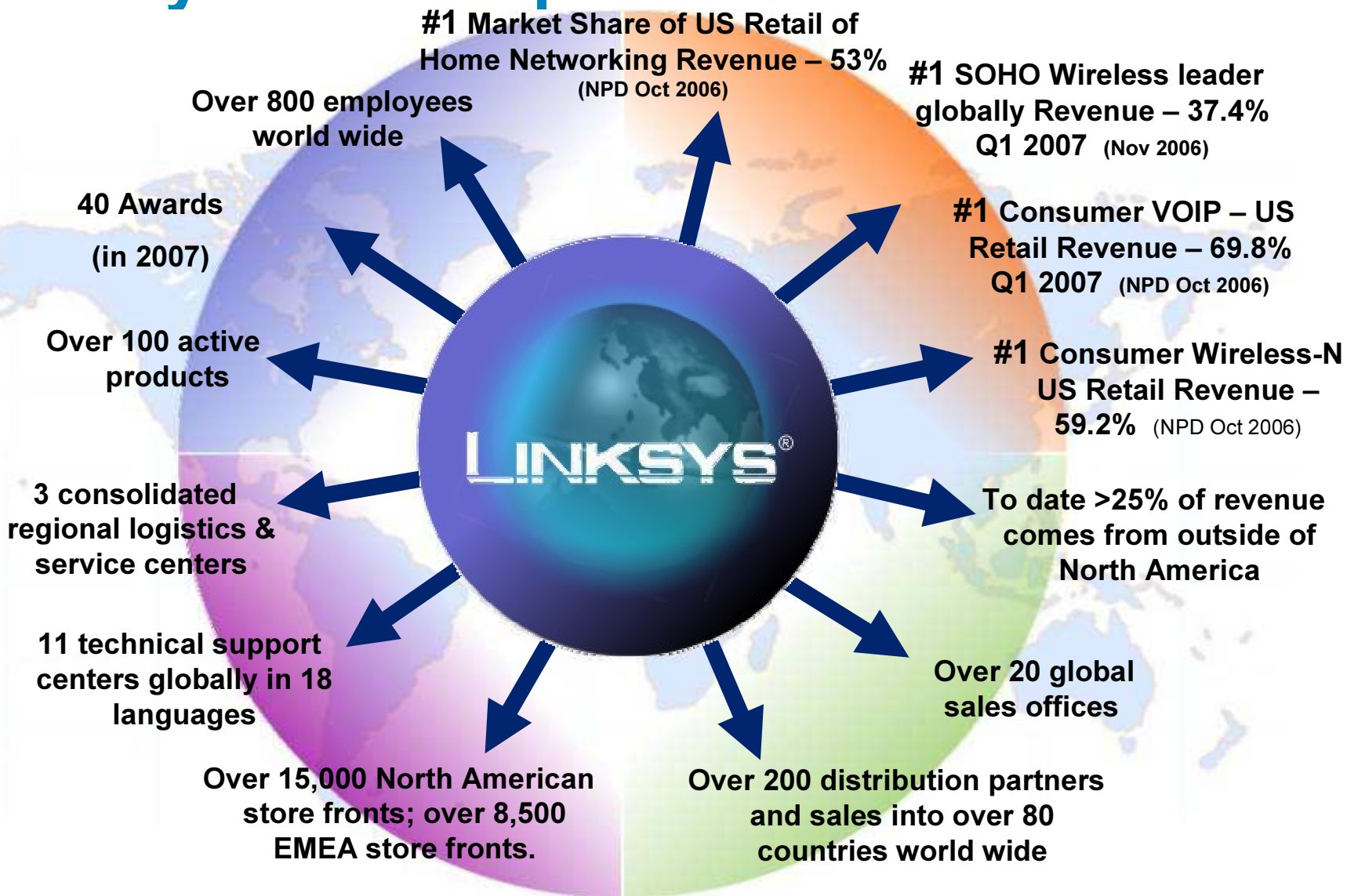
# Agenda

- Linksys Introduction
- Linksys within Cisco
- The Connected Home
- Linksys Enablers of The Connected Life
- Coming Soon

# About Linksys

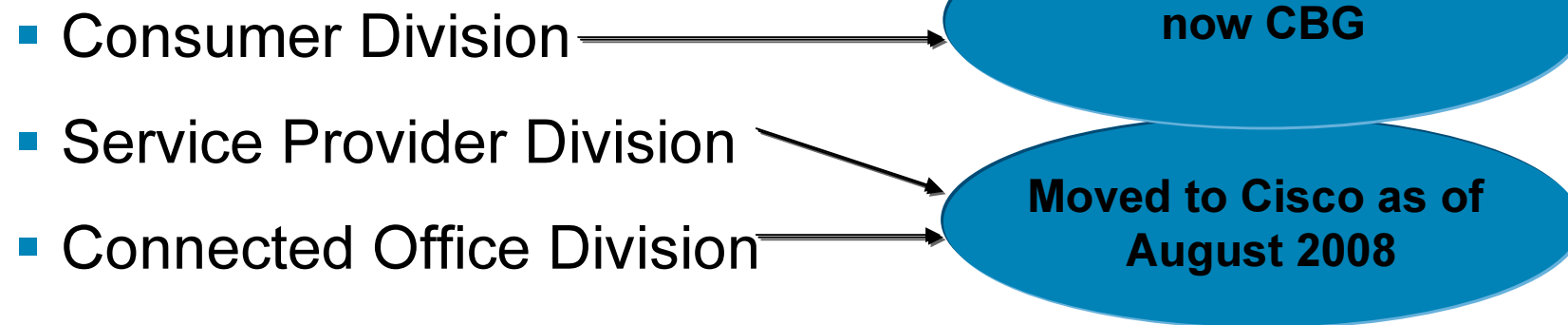
- Founded in Irvine, CA in 1988, Linksys is THE industry leader of home networking equipment.
- Acquired by Cisco (5/30/03)
- Breadth of product offerings for broadband and consumer connectivity
- User experience- Install Wizard, New GUI interface, and Auto configuration
- Most responsive to technology, consumer, and market change
- Quick to market
- Aggressive pricing for mass consumer acceptance

# Linksys Global Update



# Linksys within Cisco

Separated in three major divisions



# The Connected Home



# What Is The Connected Home?

- **The Connected Home organizes, simplifies, and unites** a consumer's content, entertainment, and communications into an easy to use and elegant solution
- **The consumer is in control** of their digital content such as photos, music, movies, files, and more
- **All connected electronic devices work together** to enable users to access and control their content or device

Computers

Set-top boxes

DVD players

MP3s

Radios

Lighting and climate control systems

Telephones

Video cameras

- **One simple, intuitive and consistent interface**
- Content can be moved **effortlessly** from device to device both at home and on the go

# Need for the Connected Home

- Consumers are migrating to digital applications to enjoy new experiences and benefits

Digital photos, music, video, communications (IM, VoIP)

- Migration creates new usability challenges

Content stored on many, isolated devices

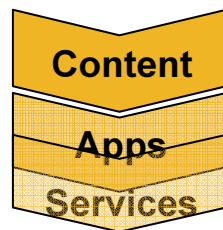
Devices are difficult to setup and connect together

**Key challenge:** find, share, and play content wherever you want it – usually on a different device than where it's stored

Analogy: Technological “Big Bang” – ever-expanding digital world of content, applications and services



## Device-Centric Experiences



Photos  
View  
Online  
album



Video  
Edit  
YouTube



Music  
Listen  
Internet  
Radio



Chat  
IM/Email  
Internet



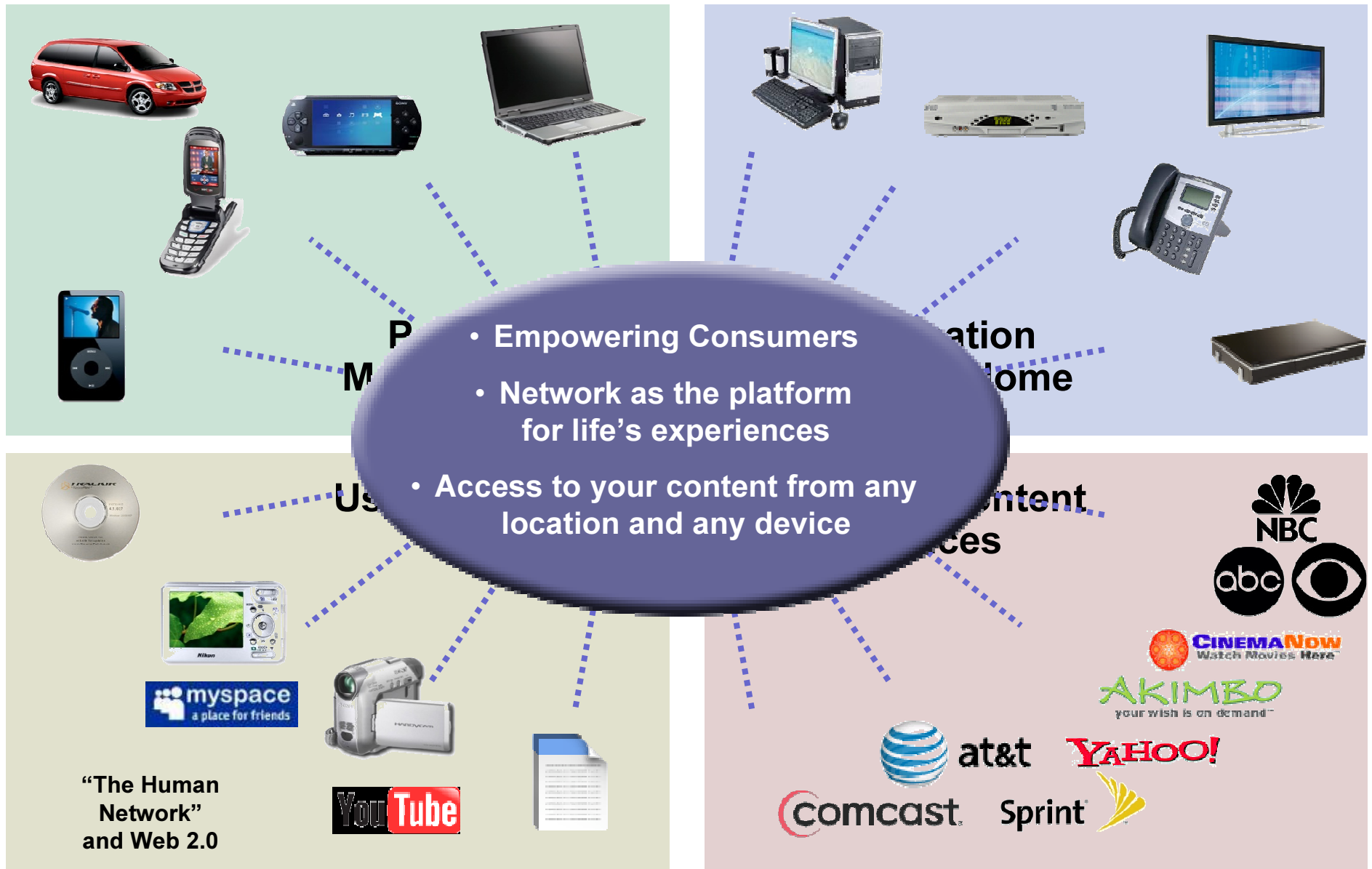
Calls  
Talk  
VoIP

# Drivers for the Connected Home

- **Consumer Power:**  
The consumer defines the way they communicate and consume entertainment
- **Broadband:**  
Broadband provides the necessary bandwidth and service platform into the home
- **Converged Devices:**  
Converged networking devices bridge the gap between the PC and consumer electronic products
- **User Interface:**  
A simple, seamless and unified user interface on all devices makes everything easy
- **Entertainment Content:**  
The rise of extensive personal and Internet-based content including first run and long-tail movies, TV shows, music and sports can now be accessed in any location.
- **The Connected Home enables life's experiences through the power of the network**

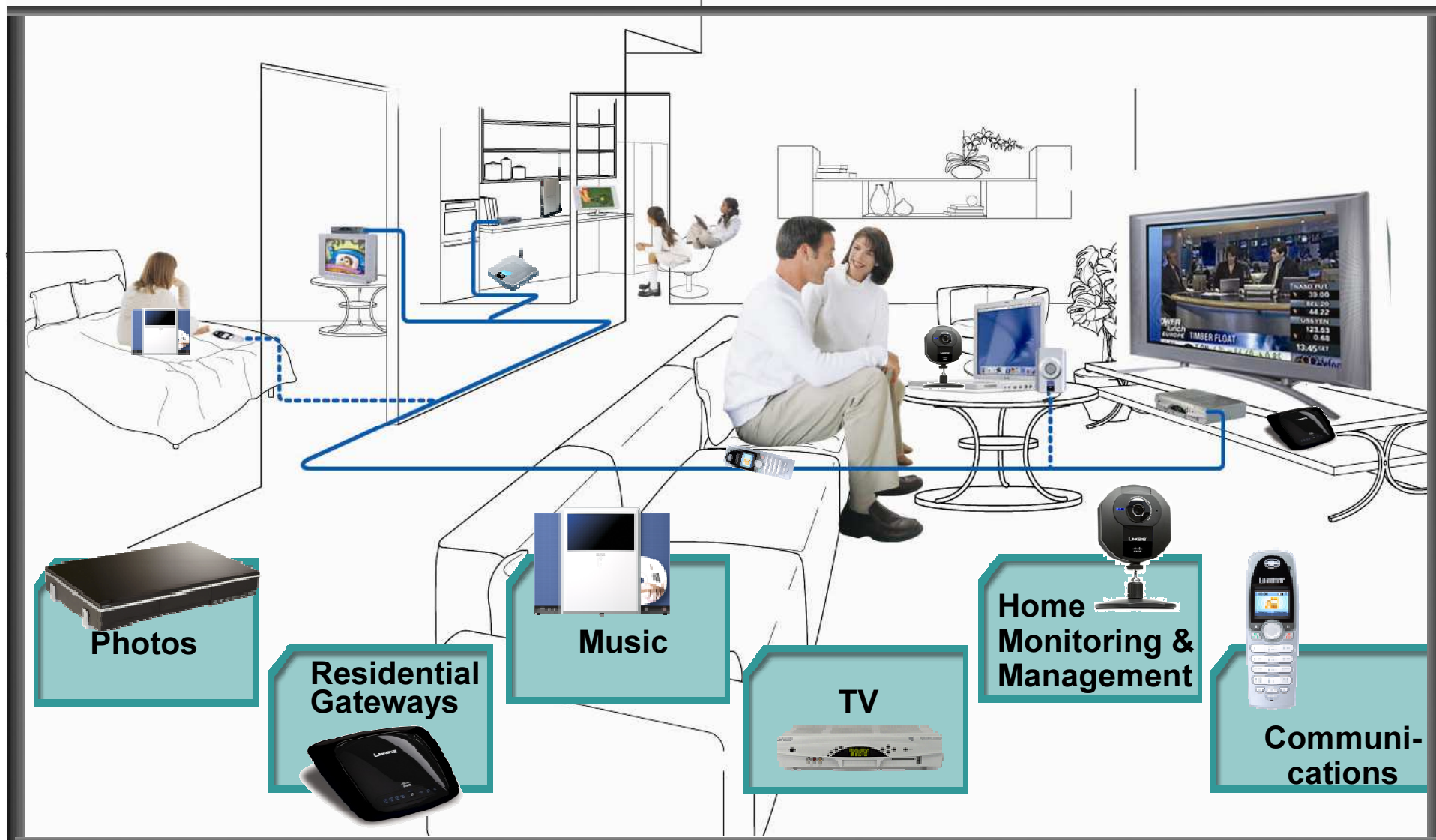


# The Network Enables Life's Experiences



# Connected Home Solutions

A Robust Network Enables Connected Home Solutions



# Premium Customer Experience



**Deliver a premium customer experience at every touch point**

# Building the Connected Home



## Devices



LINKSYS

## Architecture

Linksys Hardware Platform

Linksys Software Platform

LINKSYS

## Network

Entertainment Grade Home Network (EGHN)

- Fiber
- Wireless
- xDSL
- Ethernet
- DOCSIS
- Powerline

LINKSYS

# Linksys Consumer Value Proposition

## Linksys Value Proposition

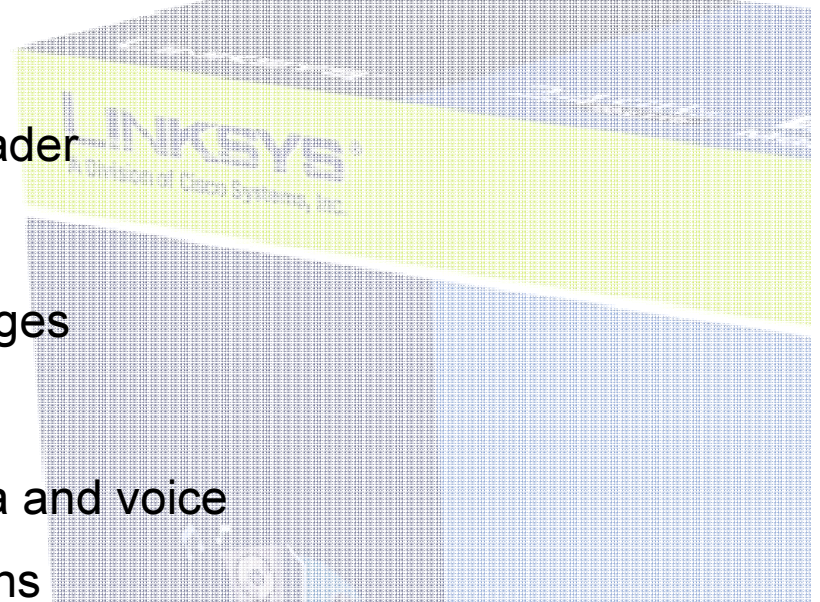
- We deliver a total quality experience
- We make it easy to find, enjoy, and organize digital content
- We offer a broad selection of products that work great together

Consumer Electronics	Network	Content & Applications	Channel & Customer Service
<ul style="list-style-type: none"><li>▪ Simple out-of-the box network provisioning</li><li>▪ Consistent and intuitive UI</li><li>▪ Family spans high-end to value-end products</li></ul>	<ul style="list-style-type: none"><li>▪ Entertainment Grade Home Network (EGHN) provides optimum media experience, wired or wireless</li><li>▪ Easy to get devices onto the network</li><li>▪ Easy to move content between devices</li></ul>	<ul style="list-style-type: none"><li>▪ Ability to deliver breadth of content and applications</li><li>▪ Tight integration and availability across products</li><li>▪ Effortless navigation</li></ul>	<ul style="list-style-type: none"><li>▪ Ownership of entire customer experience: sales to support</li><li>▪ Channel breadth: retail, installers VARS, service provider</li><li>▪ The only company that can support Connected Home end-to-end</li></ul>

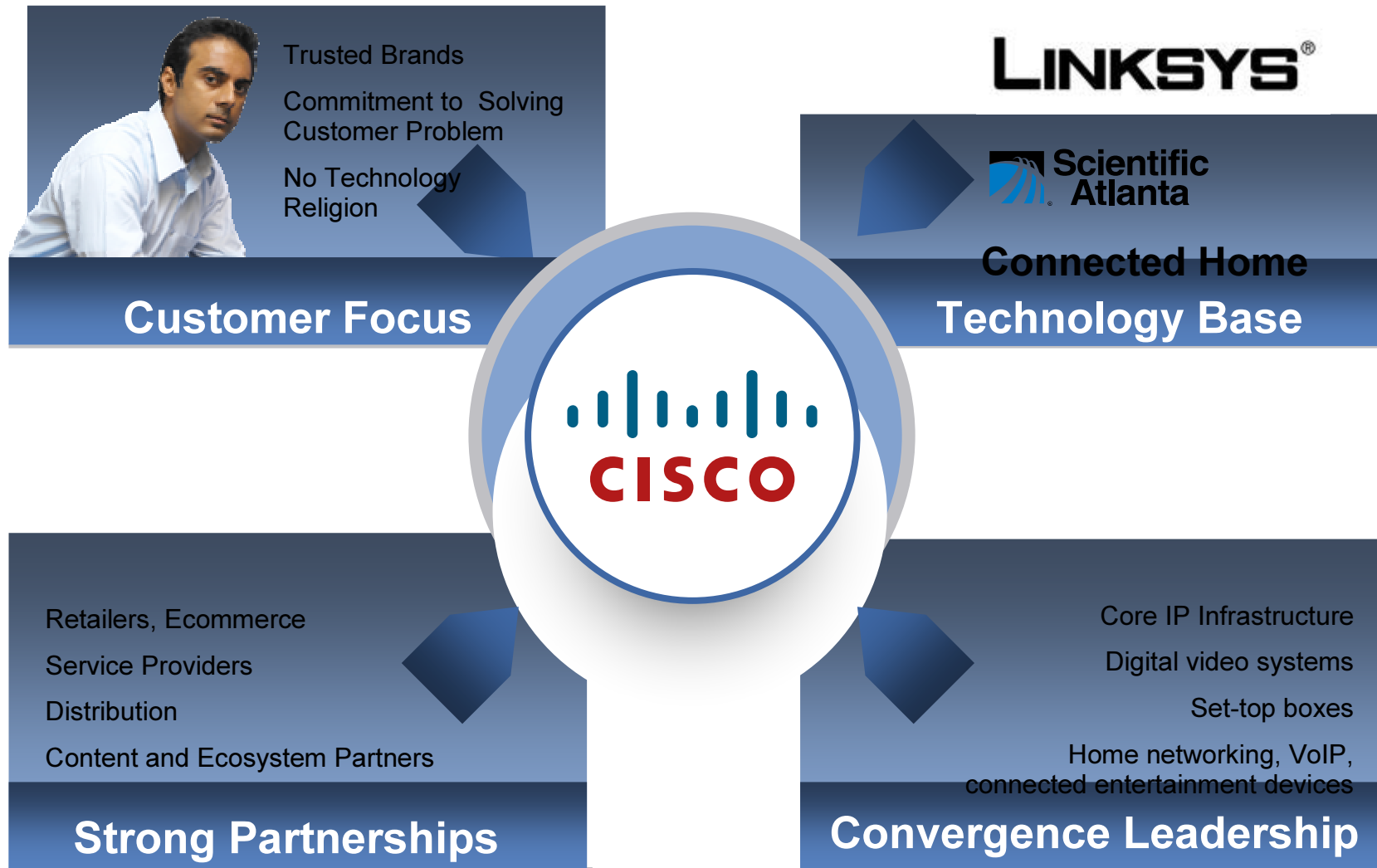
# Delivering the Connected Home

Linksys is uniquely positioned to truly deliver on the Connected Home vision via the power of the network

- Broad WW customer base
  - Over 30M routers shipped to date**
- First to market with innovative, easy to use networking solutions
  - Wireless-N, 3G Wireless Router (Vodafone), iPhone, LELA
- Channel Strength
  - Brand recognition & loyalty as market leader
- Unparalleled Responsiveness
  - Technology, customer, and market changes
- Breadth of Product Offerings
  - From gateways & routers to digital media and voice
  - Strategic vision to build complete solutions



# Cisco Is Uniquely Positioned for Success



# Examples of Linksys Enablers of The Connected Life



# Examples of Linksys Enablers of The Connected Life

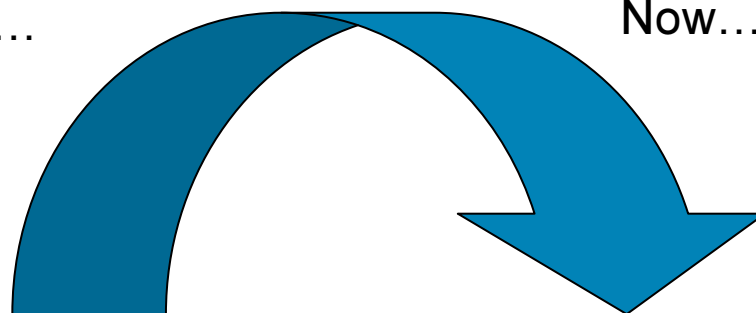
- Stylish Design
- Ease of Use
- Broad Range of Products
- Non-Proprietary Compatibility
- Scalability
- Safety



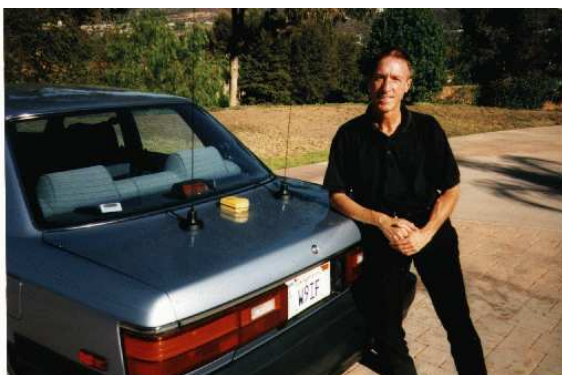
# Consumer Electronics Antenna Design Evolution



Then...



Now...



# New Industrial Design

Sleek stylish design...

- Design based on hundreds designs presented to consumers
- New sleek design looks great in the home or office
- New design sets Linksys apart
- New design drives consumer confidence in their choice of the worldwide#1 choice in wireless networking



# Features

## **Feature: Internal Antenna Technology**

- This new Linksys Wireless Router features Internal Antenna Technology, a powerful smart antenna solution that is integrated into the router design delivering expanded wireless signal coverage

## **Feature: LELA**

- The Linksys EasyLink Advisor (LELA) application setup is quick and easy. LELA lets you view, manage and repair your network anytime, throughout the life of your router. It's like having a Linksys expert available whenever you need one.

## **Feature: WPS (Wi-Fi Protected Setup)**

- A simple push button setup feature makes it easy to configure the security of your wireless devices. Just push the button on the router and on your other WPS-enabled wireless device to automatically create an encryption-secured wireless connection.

# Install Visualize, Control and Optimize

## LELA



# Introduction

- Introducing LELA 3.0: “ It just works”

No complex computer or network experience needed

LELA Wizard depicts your router or network graphically. No complex id's or passwords to remember

The Best Setup & Maintenance Experience Available

Easy Discovery and Addition of New Devices

Rich Proactive Troubleshooting

Future Proof – Ongoing automated updates ensuring you have the latest performance improvements. Upgrade your existing router.

Solid platform for new applications and services

Doesn't slow down your system

# Introduction Video



# EasyLink Advisor v3

## ■ **LELA v3**

Leveraging Lela 1&2 Learning's

**New Platform – New Experience**

**Worldwide Localization**

Support for **More Product Categories**

Routers, Gateways, Peripherals, DMA, etc.

Automated **Software and Firmware Updates**

Improved **Performance and Usability**

## ■ **Scalable Platform for Services**

Security, Parental Control, Online Storage, Photo Sharing, etc.

## ■ **Leveraging Linksys Deep Knowledge in Home Networking**

Years of Experience and Research Captured in EasyLink Advisor



# Lela v3 Top Level Functions



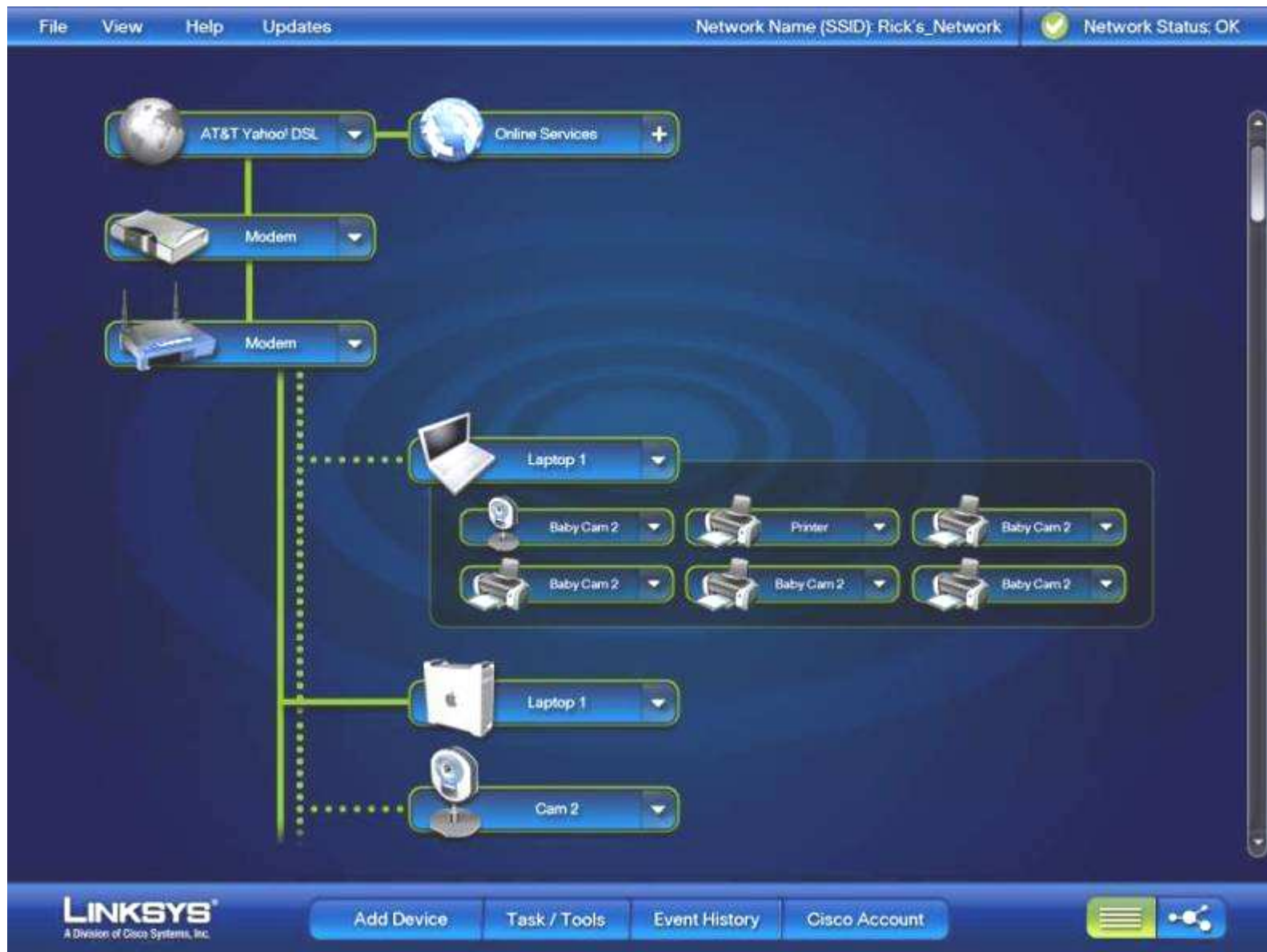
- ✓ View Network Map
- ✓ Add Wireless Computer/Device
- ✓ Go Wireless
- ✓ Replace Router
- ✓ Share Folder/Printer
- ✓ Change Wireless Settings
- ✓ Change Router Password
- ✓ Change Network Name
- ✓ Set Friendly Device Name
- ✓ View Device Details
- ✓ Fix Health and Security Alerts
- ✓ Change Device Type/Icon
- ✓ Log on to Router

- ✓ Linksys/Cisco Account Setup
- ✓ Get Support Link
- ✓ Receive Market Recommendations
- ✓ Troubleshoot Connections
- ✓ Test LAN/WAN Speed
- ✓ Setup Network Activity Report
- ✓ View Network History
- ✓ Discover a New Device
- ✓ View/Print Network Settings
- ✓ Receive/Check for Updates
- ✓ Guest Access

# Lela 3 Main Screen – Network Map



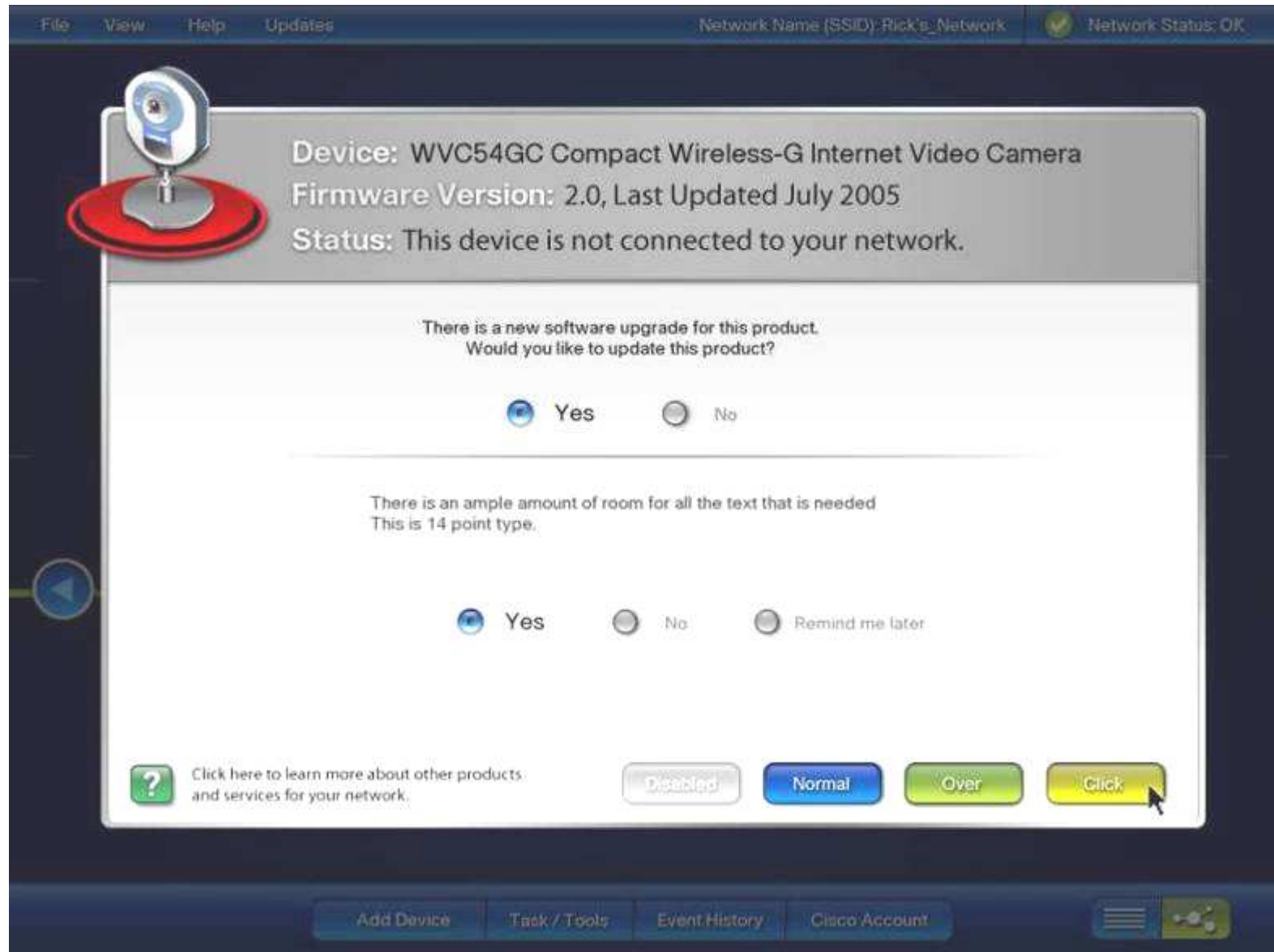
# List View



# Device Alert / Device Menu



# Wizard Window



# Lela Setup Wizards

- **New Setup Wizards Across Most Products**
  - Network Adapters
  - Routers / Gateways
  - Peripherals (IP Camera, NAS, Print Server, AP, etc.)
- **Seamless Integration with Lela**
- **Fully Localizable**
- **Using New Device Communication API**
  - Programmatically Set/Get Device Parameters
  - Instead of HTML Screen Scraping
  - Major Improvement in Performance and Usability
  - Removes Firmware Version Dependency
  - Allows Software Applications and Wizards to be independent



# Lela Router Setup Wizard

## Welcome Screen



## Animated Cabling Instructions



## Context Sensitive Help



## Easy Wireless Security Configuration



## View / Save / Print Wireless Settings



## Success

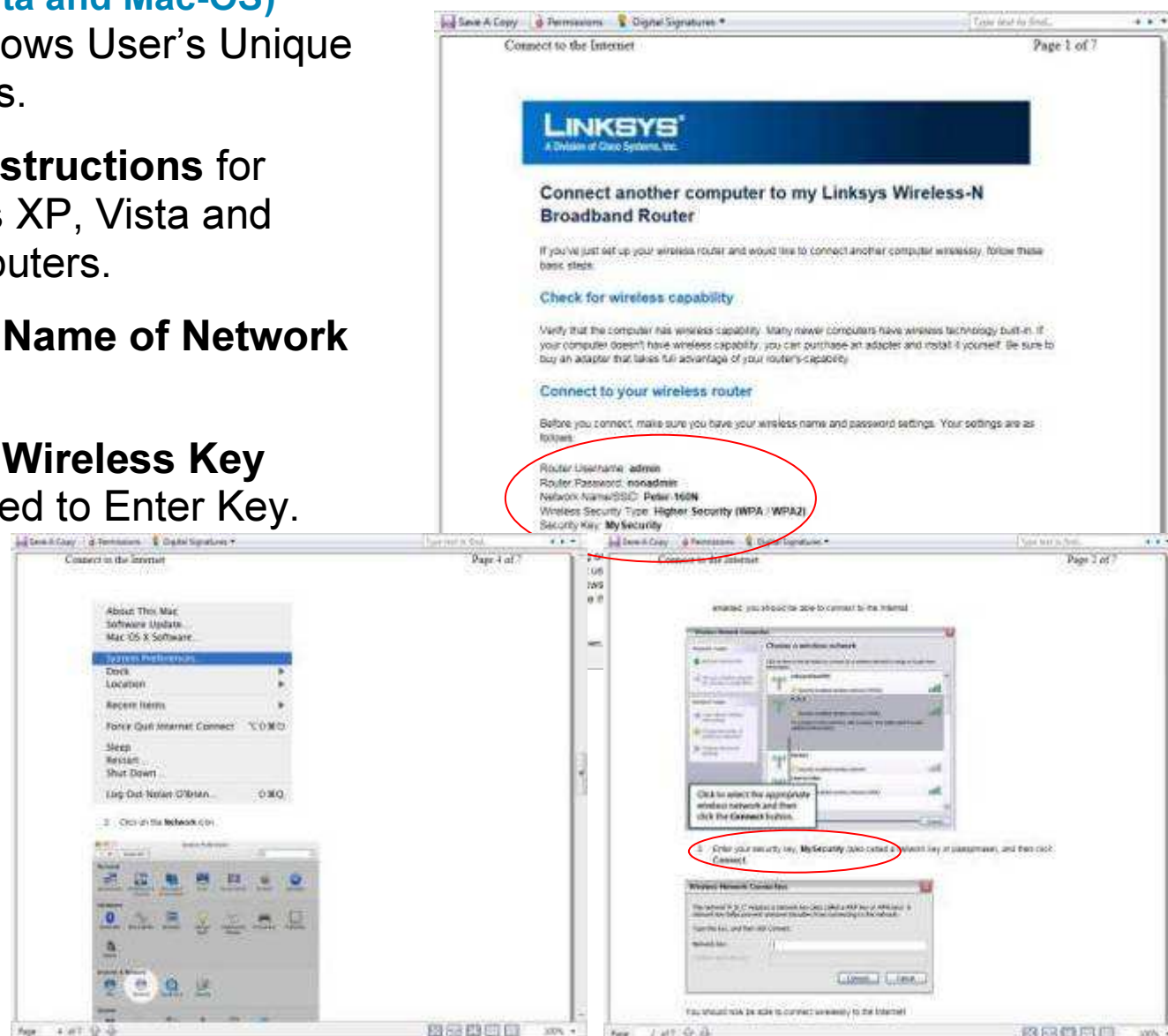




# Printed Add Computer Instructions

(Windows XP/Vista and Mac-OS)

- **Dynamically** Shows User's Unique Wireless Settings.
- **Step-by-Step** instructions for Adding Windows XP, Vista and Apple-Mac computers.
- Displays **Actual Name of Network** to Connect to.
- Displays **Actual Wireless Key** Where User Asked to Enter Key.



# More Devices



# Product Portfolio



# Product Range

- Broadband Routers / Gateways
- PowerLine
- Networked Media Players
- Networked Storage
- Home Surveillance
- Control Software

# Broadband Routers / Gateways

- Annex A & Annex B
- Up to Gigabit Wired Speeds (FE & GE)
- Up to 300Mbps Wireless Speeds
- Storage Link options
- LELA Compatible
- Media Server
- WPS



# Powerline



# Powerline Description

- What is Powerline?
- Easily add more devices to your network
- Share files, printers and storage throughout your home
- HomePlug® 1.0 with Turbo technology

# PLTE200 Powerline Turbo Bridge

We call this a BRIDGE because it has only 1 ethernet Port, with which you send data over the 220V network. The PLTE200 acts as a “bridge Between the ethernet network and the 220V network



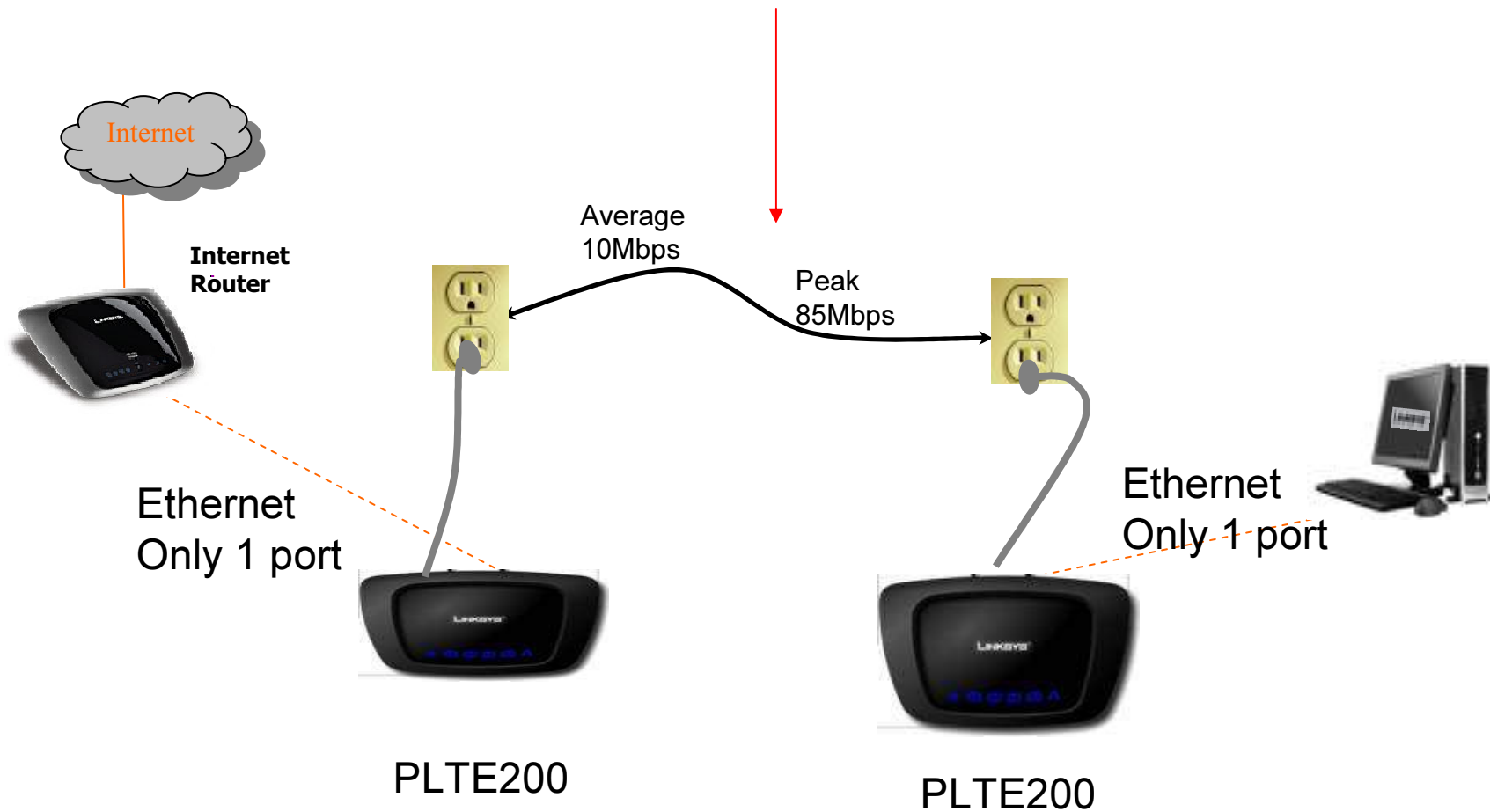
# PLTS200- Powerline Turbo Switch



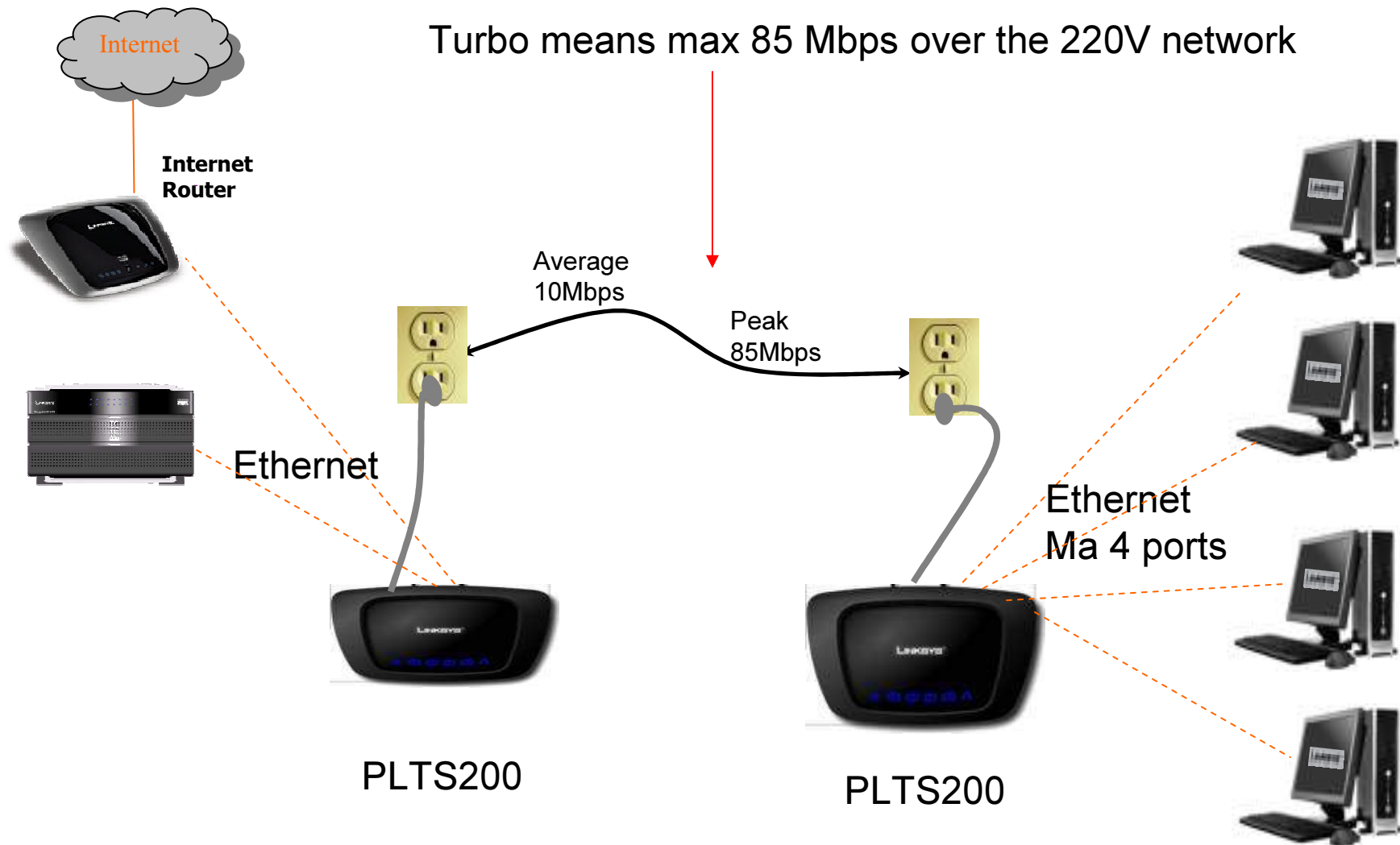
We call this a SWITCH  
Because it has 4 switched  
Ethernet Ports.  
Just as the ie. WRT54G2 router.

# A Powerline Turbo network with 2 PLTE200

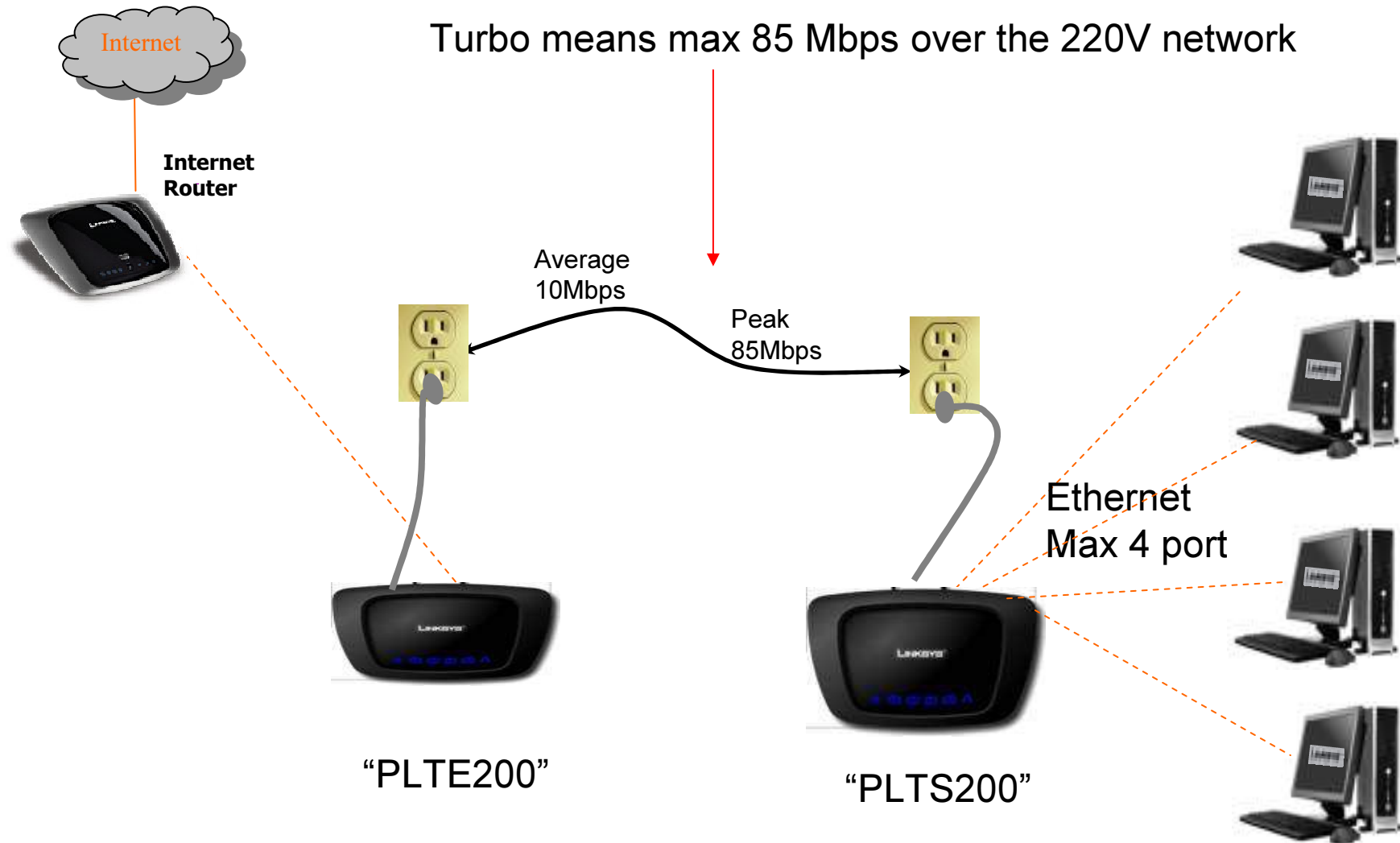
Turbo means max 85 Mbps over the 220V network



# A Powerline Turbo network with 2 PLTS200

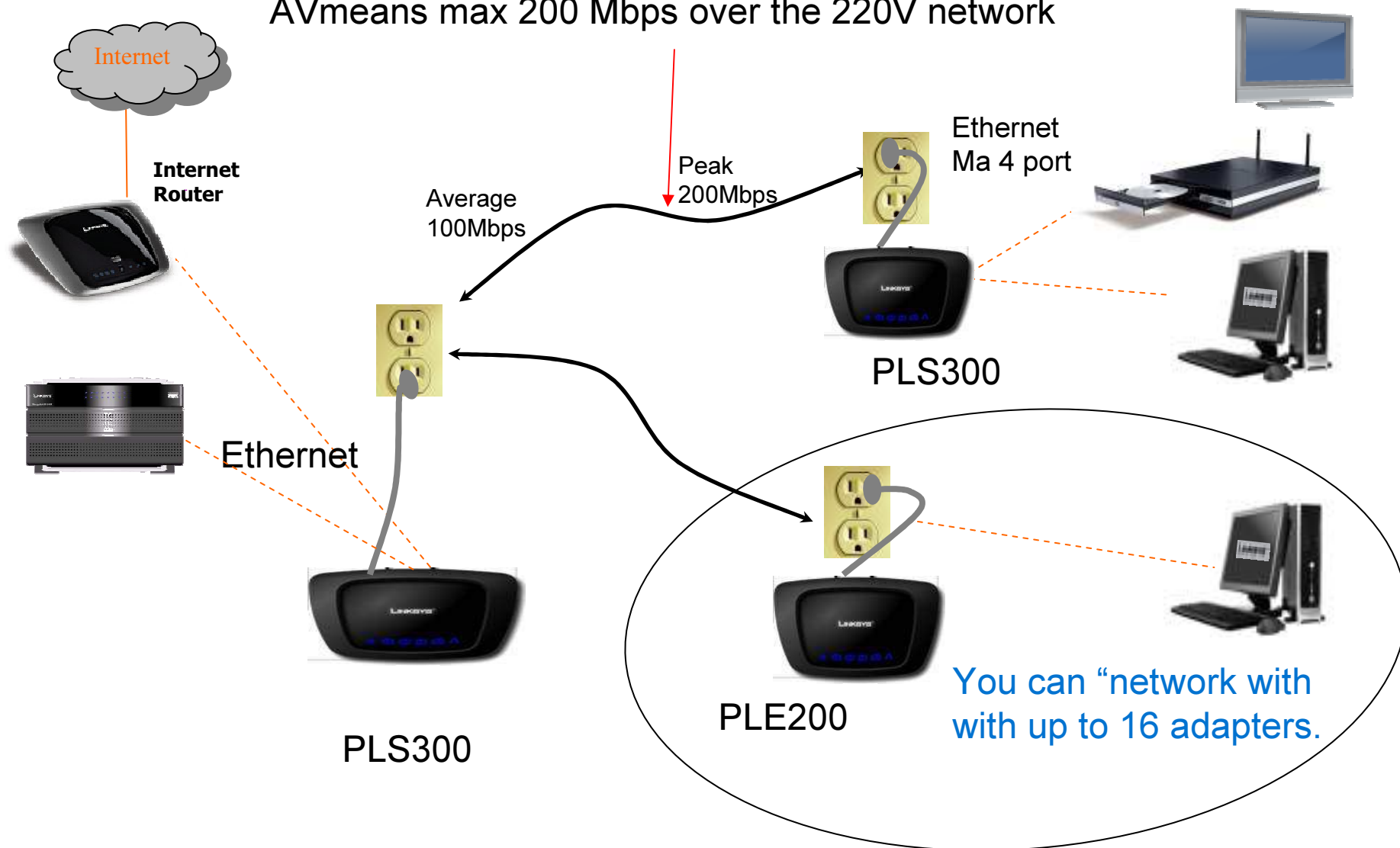


# A Powerline turbo network with a PLTK300



# A powerline AV network with PLx300

AV means max 200 Mbps over the 220V network



# Networked Media Players

- Windows Vista Extenders

DMA2200 - Linksys Media Center Extender with DVD



DMA2100 - Linksys Media Center Extender



- Media Extenders

KISS1600 - High Definition Media Player



# Networked Storage, Home Surveillance & Control Software

- Networked Storage Solutions – NAS Solutions



- Home Surveillance – WiFi IP Cameras



- LELA & Pure Networks Solutions

# NAS200-EU; stuffed with features

## Easily add secure storage to your network

- 2 bays with SATA2 interface, easy installation and removal HDD
- 2 USB ports, supports USB memory devices such as flash disk or USB hard drive
- Flexible disk configuration: 1) combine 2 drives to be seen as one, 2) disk-to-disk mirroring, 3) striping, or just 4) two separate drives Share storage with PCs connected to the network
- Push button for data backup
- The built-in download manager; enables users to initiate an FTP, HTTP download task from a PC's web browser. Once the task is initiated, the PC may be turned off, and the NAS200 will continue the download independently.
- Media Server Capability



- DLNA 1.5



- UPnP



- Twonkyvision (PV Media Version 4.3 )

- ZTO



- NTI backup



**NO ONE HAS BETTER FEATURES FOR THIS PRICE**

And get even more out of your NAS200 with 3<sup>rd</sup> party s/w;



- Songbird
- Google Picasso

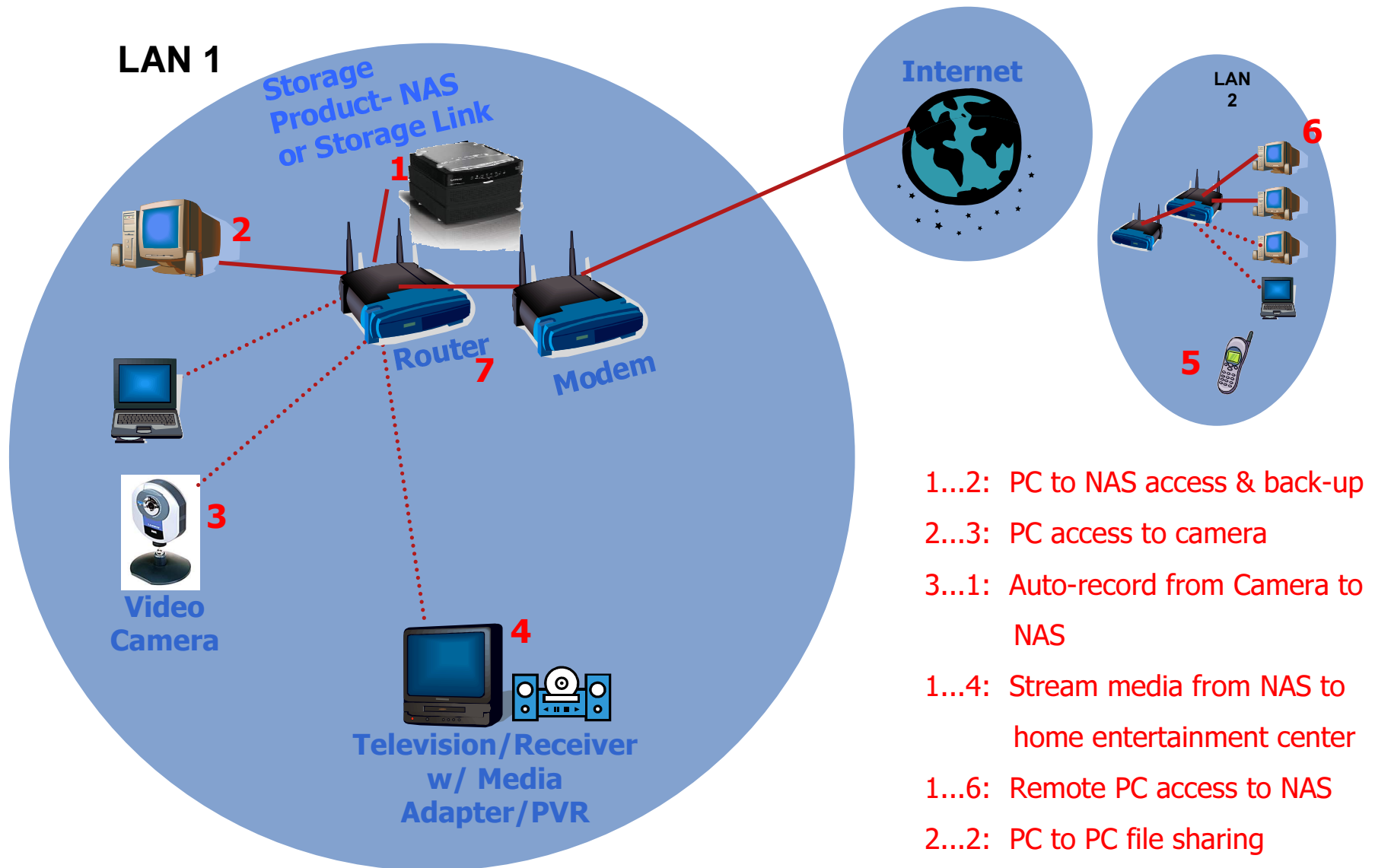
# Overview

## NAS200- Network Storage System with 2 Bays

- Share, Expand, and Secure your valuable content
- Two 3.5" SATA drive bays with space for SATA to PATA converter  
Plus two external USB ports for connecting additional storage devices.
- Configure through built in server, Web-based management utility
- Media Server Capability
- SMB over TCP/IP file sharing protocol provides high compatibility
- True NAS device:  
NAS device uses a microprocessor running embedded OS that enables boot up and diagnostics of hardware in case of failure, or even without hard disk installed.  
NDAS devices (Netgear) are lower priced, but they shift some storage-processing to client PC's. Must also install software on each client that requires access to the device.



# Network Environment w/ NAS



# Overview

**This new product will completely replace the existing WVC54GC**

## Key Features / Benefits

- Send live video – *and audio* – through the Internet to a web browser anywhere in the world
  - Keep track of your home, kids, pets, workplace, etc.
  - Security Mode automatically sends e-mail alerts with video clips upon motion detection
  - Share events and communicate with family and friends
- Improved Video Quality:
  - MPEG4 and MJPEG video streaming resolution at **640X480**, 320X240, and 160X120
  - CMOS color progressive image sensor at VGA resolution
- Microphone on front with built-in preamp
- Built-in stand-alone web server → no PC necessary
- Connect wirelessly to a network over Wireless-G, or through a 10/100 Ethernet port



# Other Features

## Video Control Functions through Active X

- View Size
- Zoom
- Flip
- Mirror
- Snapshot



## Motion Detection

- User definable detection areas
- User definable sensitivity → alert based on sensitivity level

## Alert Triggers

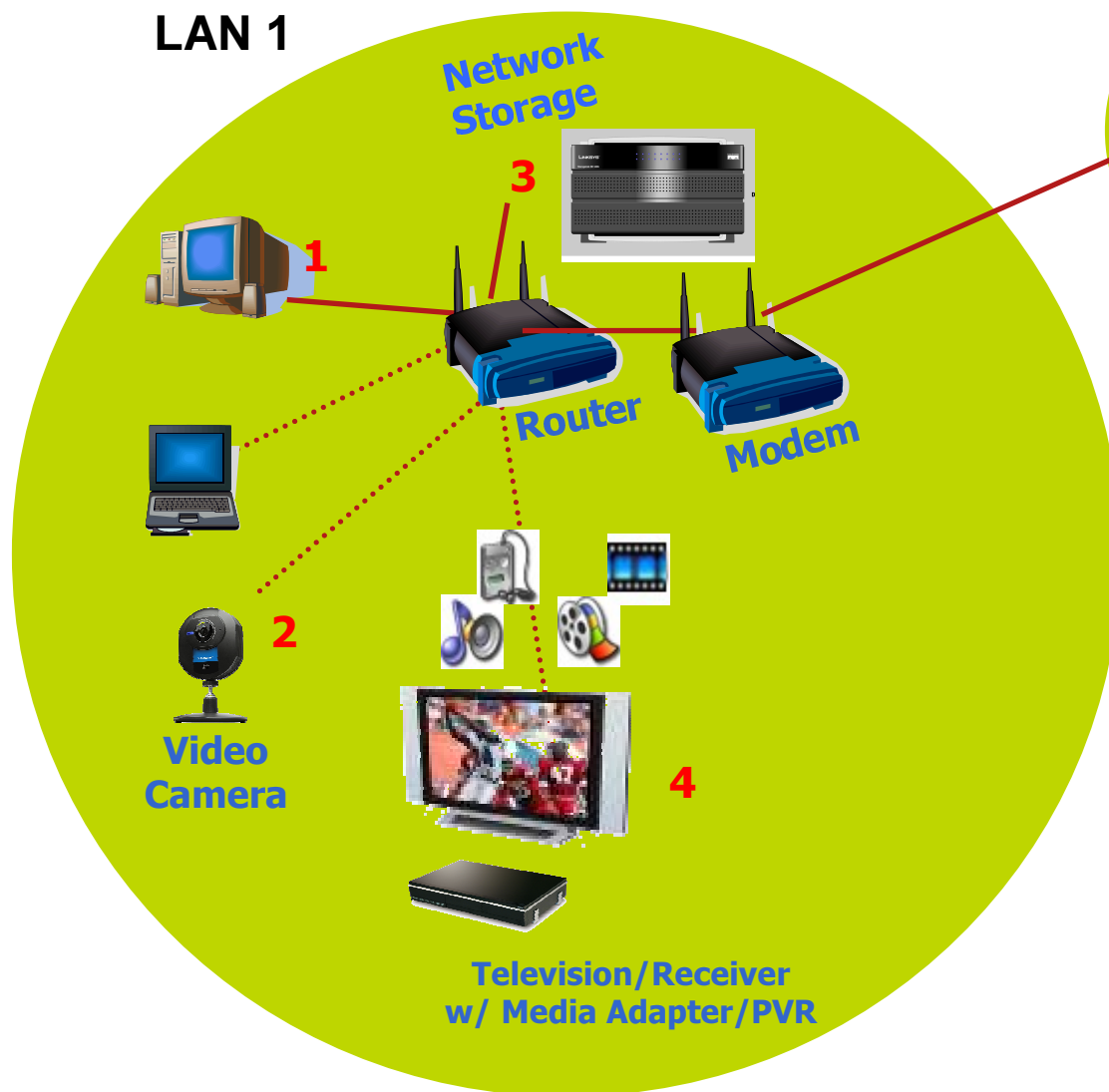
- E-mail → up to 3 e-mail addresses
- FTP uploading → upon alert, video or JPEG snapshots uploaded to server

## Remote Access

- From TZO.com → Free for 1<sup>st</sup> year, \$25/year afterwards

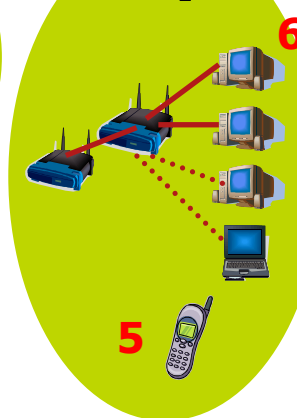
# Network Environment

## LAN 1



## Internet

## LAN 2



- 1...2: PC access to camera
- 2...3: Auto-record from camera to network storage
- 3...4: Stream media from network storage to home entertainment center
- 2...5: Motion detection alert to smart phone
- 6...2: Remote PC access to camera
- 5...2: Smart phone access to camera

# Coming Soon

- Pure Networks Products/Services Available through Linksys
- More Consumer Grade Products
- More Consumer Grade Services
- New Website



## Q and A ?

# Thank You



