

# CISCO SBCS 1.0 Solution Fundamentals The UC520 in the Solution



## Introduction Overview

The UC520 includes these core components:

- Support for Cisco Unified IP Phones.
- Cisco Unified Communications Manager Express and Cisco Unity Express.
- Security, firewall, and VPN capabilities.
- Optional wireless capabilities.
- Support for analog devices.



### Introduction - Overview

The UC520 is an all-in-one, small-business-focused Unified Communications appliance that provides a broad range of communications solutions in a single, unified package.

The UC520 includes the support for a number of communication devices, including Cisco Unified IP Phones, wireless handsets, and Session Initiation Protocol (SIP) phones. In addition, it includes Cisco Unified Communications Manager Express and Cisco Unity Express for call processing; security, firewall, and VPN capabilities; optional built-in wireless access point; and support for analog devices, such as a fax machine.

## Introduction Core Components

Core Component	Description
Cisco Unified IP Phones	Cisco provides a complete range of Cisco Unified IP Phones and communications devices designed to take full advantage of converged voice and data networks, and these devices offer the convenience and user friendliness found in business phones. Cisco Unified IP Phones can help improve productivity by meeting the needs of different users throughout the organization.
Cisco Unified Communications Manager Express	
Cisco Unity Express	
LAN switching	The Cisco Unified IP Phone portfolio provides the following: <ul style="list-style-type: none"><li>• IP Phones with LCD displays, including dynamic soft keys for call features and functions.</li></ul>
Security, firewall, and VPN	• Support for information services, including Extensible Markup Language (XML) capabilities to extend IP Phone systems to give IP Phone users access to a variety of information such as stock quotes, employee directories, and web-based content.
Optional wireless LAN	
Cisco Configuration Assistant	



### Introduction - Core components

## Introduction

### Core Components

Core Component	Description
Cisco Unified IP Phones	Cisco Unified Communications Manager Express is a Cisco IOS Software solution embedded in the UC520 appliance that provides call processing for Cisco Unified IP phones. Simple to deploy, administer, and maintain, Cisco Unified Communications Express is a reliable, feature-rich telephony solution.
Cisco Unified Communications Manager Express	
Cisco Unity Express	
LAN switching	
Security, firewall, and VPN	
Optional wireless LAN	
Cisco Configuration Assistant	



### Introduction - Core components

## Introduction Core Components

Core Component	Description
Cisco Unified IP Phones	Embedded Cisco Unity Express enables voicemail, integrated messaging, and Automated Attendant services for increased customer service and a rich employee communications experience.
Cisco Unified Communications Manager Express	
Cisco Unity Express	
LAN switching	
Security, firewall, and VPN	
Optional wireless LAN	
Cisco Configuration Assistant	



### Introduction - Core components

## Introduction Core Components

Core Component	Description
Cisco Unified IP Phones	The UC520 has an integrated managed Ethernet switch that provides eight ports of 10/100 Power over Ethernet (PoE) optimized for integration with the Cisco Smart Business Communications System.  Additionally, the system capacity can be expanded by connecting the recommended CE520 Switch.
Cisco Unified Communications Manager Express	
Cisco Unity Express	
LAN switching	The CE520 Switch provides eight additional ports of 10/100 PoE and it ships with a predefined software configuration to work immediately with the UC520.
Security, firewall, and VPN	
Optional wireless LAN	
Cisco Configuration Assistant	



### Introduction - Core components

## Introduction Core Components

Core Component	Description
Cisco Unified IP Phones	Security is a fundamental building block of any network, and Cisco products play an important role in embedding security at the customer's access edge. The Cisco IOS Firewall is a stateful-inspection firewall available with the UC520. Built from market-leading Cisco PIX Firewall technologies, Cisco IOS Firewall is supported on the UC520 platform as a base feature. Cisco IOS Firewall is an ideal single-box solution for protecting the WAN entry point into the network.
Cisco Unified Communications Manager Express	
Cisco Unity Express	
LAN switching	VPNs carry private data over a public network and extend remote access to users over a shared infrastructure. VPNs maintain the same security and management policies as private networks and are the most cost-effective means of establishing a point-to-point connection between remote users and a central network. VPNs have been the fastest-growing form of network connectivity, and Cisco takes this approach to a new standard by making VPN functions an integral part of the UC520 offering. The UC520 includes built-in hardware-based encryption acceleration that offloads IP Security (IPsec), Advanced Encryption Standard (AES), Data Encryption Standard (DES), and Triple DES (3DES) encryption and VPN processes to provide increased VPN throughput with minimal effect on the UC520 CPU.
Security, firewall, and VPN	
Optional wireless LAN	
Cisco Configuration Assistant	



### Introduction - Core components

## Introduction Core Components

Core Component	Description
Cisco Unified IP Phones	The UC520 supports an optional integrated wireless LAN (WLAN) access point for secure WLAN connectivity. Small businesses can easily extend access to data applications as well as WLAN telephony. Wireless services allow greater mobility for employees, partners, and customers, resulting in increased productivity.
Cisco Unified Communications Manager Express	
Cisco Unity Express	
LAN switching	
Security, firewall, and VPN	
Optional wireless LAN	
Cisco Configuration Assistant	



### Introduction - Core components

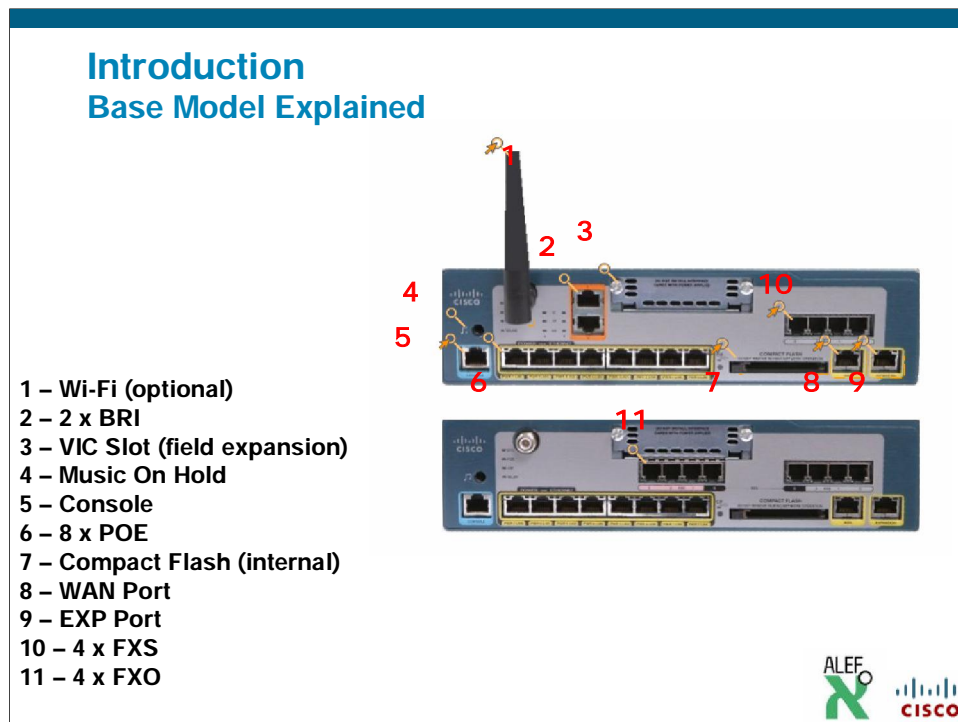


## Introduction Core Components

Core Component	Description
Cisco Unified IP Phones	Cisco Configuration Assistant, a PC-based intuitive GUI configuration tool, is an integral component of the Cisco Smart Business Communications System. With a focus on ease of use, the Cisco Configuration Assistant simplifies configuration of multiple technologies: Unified Communications, switching, routing, security, and wireless. Cisco Configuration Assistant simplifies telephony configuration and provides follow-up support to facilitate easy modification. Features include an interactive topology view, front-panel views of devices, and drag-and-drop Cisco IOS Software upgrades.
Cisco Unified Communications Manager Express	
Cisco Unity Express	
LAN switching	
Security, firewall, and VPN	
Optional wireless LAN	
Cisco Configuration Assistant	



### Introduction - Core components



#### Introduction - Base model explained

The Cisco Unified Communications 520 (UC520), a critical part of the Cisco Smart Business Communications System, is a Unified Communications solution for small businesses that provides voice, data, voice mail, Automated Attendant, video, security, and wireless capabilities while integrating with existing desktop applications such as calendar, e-mail, and customer relationship management (CRM) programs.

1. **Wi-Fi (optional):** The UC520 provides an optional 802.11b/g integrated access point that can provide 54Mbps WLAN connectivity for data and voice clients.
2. **2 x BRI:** The Base Model is available in either a 2-BRI or 4-FXO configuration.
3. **VIC Slot (field expansion):** The UC520 supports a number of voice cards for PSTN and analog phone. DID is also supported.
4. **Music On Hold:** This is a 3.5 mm Audio port for live audio feed.
5. **Console:** The UC520 can detect modems and can switch between Console and Aux port functionality.
6. **8 x POE:** The UC520 includes 8 built-in 10/100 Power-Over-Ethernet ports that support total of 80 watts of power. All IP Phones are supported in the CME 4.1 release.
7. **Compact Flash (internal):** The UC520 comes with a default 128MB of Compact Flash for IOS and 1GB of compact flash for Cisco Unity Express.
8. **WAN Port:** This is the 10/100 Ethernet Uplink port. It can be connected to a DSL Router, Cable Modem, or an ISR.
9. **EXP Port:** Use the 10/100 Ethernet expansion port to increase IP phone density. We recommend you use this in conjunction with the Catalyst Express (CE) 520 Companion Switch.
10. **4 x FXS:** The 4 FXS ports can be used to connect analog phones or fax machines to the UC520.
11. **4 x FXO:** The Base Model is available in either a 4-FXO or 2-BRI configuration.

## Introduction

### Integrated Mananged Ethernet Switch

Switch	Description
Integrated managed Ethernet switch	<p>The UC520's integrated managed Ethernet switch:</p> <ul style="list-style-type: none"><li>• Provides eight ports of 10/100 PoE.</li><li>• Is optimized for integration with the Cisco Smart Business Communications System.</li></ul>
PoE	
CE520	



## Introduction - Integrated Mananged Ethernet Switch

## Introduction

### Integrated Mananged Ethernet Switch

Switch	Description
Integrated managed Ethernet switch	PoE allows the phones and companion access points to be used without their own independent power supplies by providing the needed voltage over the Ethernet cables used for data connection.
PoE	
CE620	



### Introduction - Integrated Mananged Ethernet Switch

## Introduction Integrated Mananged Ethernet Switch

Switch	Description
Integrated managed Ethernet switch	<ul style="list-style-type: none"><li>• Provides eight additional ports of 10/100 PoE</li><li>• Ships with a predefined software configuration to work immediately with the UCS20.</li><li>• Companion switch allows phone capacity to increase from 8 to 16 users.</li></ul>
PoE	
CE520	



### Introduction - Integrated Mananged Ethernet Switch

## Introduction

### Security and Firewall Features and Benefits

Feature	Benefit
Cisco IOS Firewall	Sophisticated security and policy enforcement provide features such as: <ul style="list-style-type: none"><li>• Stateful, application-based filtering.</li><li>• Context-based access control.</li><li>• Per-user authentication and authorization.</li><li>• Real-time alerts.</li><li>• Transparent firewall.</li></ul>
Cisco Easy VPN Remote and Server support	
Standard 802.1x support on integrated switching	
Network Address Translation (NAT)	
IPsec VPN	
EZVPN	



## Introduction - Security and Firewall Features and Benefits

## Introduction

### Security and Firewall Features and Benefits

Feature	Benefit
Cisco IOS Firewall	The UC520 eases administration and management of point-to-point VPNs by actively pushing new security policies from a single headend to remote sites.
Cisco Easy VPN Remote and Server support	
Standard 802.1x support on integrated switching	
Network Address Translation (NAT)	
IPsec VPN	
EZVPN	



## Introduction - Security and Firewall Features and Benefits

## Introduction

### Security and Firewall Features and Benefits

Feature	Benefit
Cisco IOS Firewall	Standard 802.1x applications require valid access credentials that make unauthorized access to protected information resources and deployment of unsecured wireless access points more difficult.
Cisco Easy VPN Remote and Server support	
Standard 802.1x support on integrated switching	
Network Address Translation (NAT)	
IPsec VPN	
EZVPN	



## Introduction - Security and Firewall Features and Benefits



## Introduction

### Security and Firewall Features and Benefits

Feature	Benefit
Cisco IOS Firewall	This feature simplifies and reduces costs associated with global IP address allocation and management.
Cisco Easy VPN Remote and Server support	Only a single registered IP address is required to support all users on an entire LAN infrastructure.
Standard 802.1x support on integrated switching	
Network Address Translation (NAT)	
IPsec VPN	
EZVPN	



## Introduction - Security and Firewall Features and Benefits

## Introduction

### Security and Firewall Features and Benefits

Feature	Benefit
Cisco IOS Firewall	Built-in hardware-based encryption acceleration offloads IPsec, AES, DES, and 3DES encryption and VPN processes to provide increased VPN throughput with minimal effect on the CPU, and supports SSL Web VPN and SSH 2.0
Cisco Easy VPN Remote and Server support	
Standard 802.1x support on integrated switching	
Network Address Translation (NAT)	
IPsec VPN	
EZVPN	



## Introduction - Security and Firewall Features and Benefits

## Introduction

### Security and Firewall Features and Benefits

Feature	Benefit
Cisco IOS Firewall	An EZVPN server is hosted on UC520 to support CCA for remote configuration and works with a Cisco VPN client and Microsoft VPN client.
Cisco Easy VPN Remote and Server support	
Standard 802.1x support on integrated switching	
Network Address Translation (NAT)	
IPsec VPN	
EZVPN	



## Introduction - Security and Firewall Features and Benefits

## Default Configuration Derivative of Advanced IP Services

The feature set supports all of the voice, video, data, security, and wireless features with the following exceptions:

- For voice: MGCP/CCM/SRST.
- For data: Routing.
- For security: IPS/IDS.



### Default Configuration - Derivative of Advanced IP Services

This IOS feature set is derived from Advanced IP Services and supports all of the voice, video, data, security, and wireless features with the certain voice, data and security exceptions listed on the graphic.

## Default Configuration Smart Assist Overview

### Smart Assist:

- Enables plug-and-play by automatically detecting and configuring applications.
- Ships with a default configuration for voice and secure data networking.
- Improves ease of setup and optimizes performance.
- Allows for rapid deployment of the product in the field enabled by:
  - Preassigned phone extensions.
  - Dial plans.
  - Voice and data VLANs.
  - Firewall settings.
  - Automatic extension assignment for voice-mail boxes.



## Default Configuration - Smart Assist Overview

Although packaged to support various deployment configurations, the UC520 comes standard with a Cisco Smart Assist predefined configuration, which allows for rapid deployment of the product in the field with such features as preassigned phone extensions, dial plans, voice and data VLANs, and firewall settings.

Smart Assist is an embedded technology that enables plug-and-play by automatically detecting and configuring Cisco products and applications. This assists in the configuration of the UC520 and the CE520. This application comes with a default configuration for voice and secure data networking. It also improves ease of setup and deployment and optimizes network performance and security.

The Cisco Smart Assist predefined configuration allows for rapid deployment of the product in the field, enabled by preassigned phone extensions, dial plan, voice and data VLANs, firewall settings, and automatic extension assignment for voice-mail boxes.

## Default Configuration Smart Assist Features for the UC520

### The Cisco Smart Assist feature:

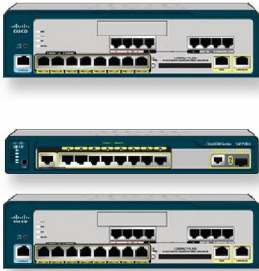
- Provides auto-configuration and service activation.
- Improves the ease of setup and deployment.
- Helps in optimizing network performance and security.
- Aids in ongoing operation of Cisco networks.



### Default Configuration - Smart Assist Features for the UC520

The Smart Assist features for the UC520 provide auto-configuration and service activation for Cisco SBCS products and applications. Cisco Smart Assist features are unique in offerings because they improve the ease of setup and deployment of Cisco devices. They also help in optimizing network performance and security. It also aids in the ongoing operation of Cisco networks as they grow.

## Default Configuration Configuration Options



**8 User Configuration:**  
PSTN Interfaces: 4  
PoE Ports: 8  
Analog Stations: 4  
Voice Module Expansion Slot: 1

**16 User Configuration:**  
PSTN Interfaces: 4  
PoE Ports: 16  
Analog Stations: 4  
Voice Module Expansion Slot: 1

**16 User Configuration:**  
PSTN Interfaces: 4  
PoE Ports: 16  
Analog Stations: 4  
Voice Module Expansion Slot: 1

ALEF X CISCO

### Default Configuration - Configuration options

There are two basic options for configuring the UC520, depending on the number of user and port requirements.

Various fixed configurations are offered, eliminating the guesswork from configuration. Each configuration is equipped with the appropriate number of feature licenses for call processing, voicemail, and Cisco Unified IP Phones, simplifying the product structure. A modular slot is available in most of the configurations, allowing expansion of the system with additional PSTN interfaces. The appropriate number of fixed digital signal processors (DSPs) is packaged with each configuration.

## Default Configuration Voice Modules Supported

A UC520 has a single voice expansion slot that can support any of the following modules:

- VIC-4FXS/DID.
- VIC2-2FXO.
- VIC2-4FXO.
- VIC2-2BRI-NT/TE.



### Default Configuration - Voice Modules Supported

The voice interface cards can be used to expand the physical capacity of either PSTN interfaces, or the analog stations by adding a VIC card in the expansion slot. A UC520 can support the variety of FXS, FXO, and BRI.





### **Wireless Support - Optional Support Available**

The 802.11b/g integrated access point can be used to provide integrated WLAN connectivity to mobile clients for both voice and data, resulting in mobility and enhanced productivity for users. The integrated WLAN option is only available on the 8 and 16 user SKUs. For WLAN functionality on the 32 and 48 user models, you must purchase the individual AP521 access points.

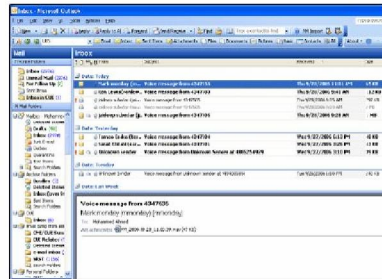
The integrated 802.11b/g access point in the UC520 supports up to 54 Mbps connections. WLAN IP Phones allow users to be mobile and more productive.

Enhanced security is provided with support for Wi-Fi Protected Access (WPA), including authentication with 802.1X and Cisco LEAP, Protected Extensible Authentication Protocol (PEAP), dynamic Wired Equivalent Privacy (WEP), or static WEP. WLAN VLANs and 802.1q/e are also supported. 802.1q/e prioritizes voice and video traffic with queuing, and customizable guest access is enabled.

## Voice Messaging Unity Express

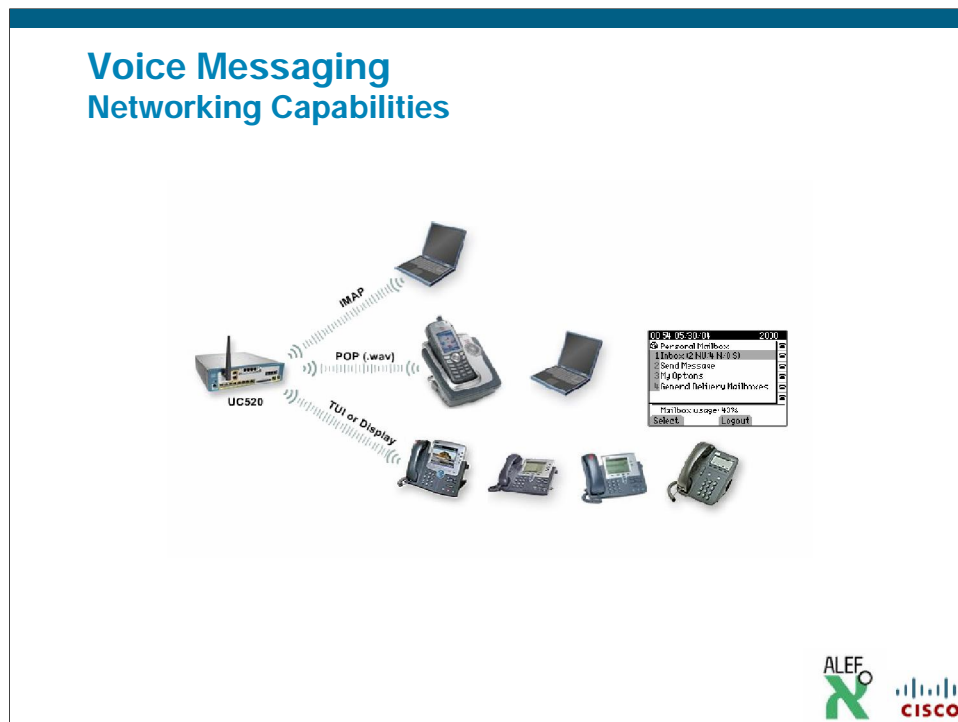
### Desktop applications use:

- IMAP-compliant e-mail client application integration.
- The Cisco IP Phone display to "browse" voice mailbox using VoiceView Express.
- New/urgent message notification to e-mail, text-based E-page, numeric page, and phone.
- SIP enhancements.
- Localization for international deployments.



## Voice Messaging - Unity Express

The Integrated Voice Mail and Automated Attendant solution using Cisco Unity Express includes a complete yet concise telephony user interface (TUI) tutorial that provides a step-by-step guide through the mailbox setup process, minimizing the need for administrator assistance, and thereby saving time and money. A full range of commonly used voice-mail features includes a comprehensive feature set containing replying, forwarding, saving messages, message tagging for privacy or urgency, alternate greetings, pause, fast forward and rewind, and envelope information.



### Voice Messaging – Network Capabilities

Networking capabilities include the Voice Profiling for Internet Mail (VPIM) protocol, allowing communication with other Cisco messaging platforms, as well as distribution lists and broadcast messages. Public and private distribution list functions and broadcast messaging capabilities are builtin, along with general-delivery mailboxes (GDMs), multiple GDM voice-mail boxes for designated team members, and the ability for subscribers to recover a message if it is inadvertently deleted.

Users can share the interface, menu structure, and commands with other Cisco voice-messaging products. Personal operators are configurable for alternate telephone numbers, per voice mailbox, for the "zero out" option and voice-mail access using IMAP integration with Microsoft Outlook, Outlook Express, or Lotus Notes. Also, when using the VoiceView Express XML application, you have access to the Cisco Unified IP Phone voice-mail and mailbox settings.

## Cisco Unified Communications Manager Express Legacy Telephony Features

Feature	Description
Support for either PBX or key system functionality	<ul style="list-style-type: none"><li>• Legacy telephony features.</li><li>• Call transfer, paging, intercom, and call coverage.</li><li>• Call park, MOH, night bell.</li><li>• Hunt Groups, basic ACD, and reporting .</li><li>• Ad hoc and "Meet Me" conferencing.</li><li>• DID/Operator console.</li></ul>
ACD, AA, and Hunt Group Enhancements	
Conferencing enhancements	
Conferencing enhancements	
Enhanced phone features	



### Cisco Unified Communications Manager Express - Legacy Telephony Features

## Cisco Unified Communications Manager Express Legacy Telephony Features

Feature	Description
Support for either PBX or key system functionality	<ul style="list-style-type: none"><li>• Dynamic registration with Hunt Groups.</li><li>• Hunt Group login/logout (normal calls still allowed).</li><li>• Improved waiting call notification.</li><li>• Enhanced B-ACD reporting in Excel format.</li></ul>
ACD, AA, and Hunt Group Enhancements	
Conferencing enhancements	
Conferencing enhancements	
Enhanced phone features	



### Cisco Unified Communications Manager Express - Legacy Telephony Features

## Cisco Unified Communications Manager Express Legacy Telephony Features

Feature	Description
Support for either PBX or key system functionality	Retain conference call when conference initiator drops.
ACD, AA, and Hunt Group Enhancements	
Conferencing enhancements	
Conferencing enhancements	
Enhanced phone features	



### Cisco Unified Communications Manager Express - Legacy Telephony Features

## Cisco Unified Communications Manager Express Legacy Telephony Features

Feature	Description
Support for either PBX or key system functionality	<ul style="list-style-type: none"><li>• Night service call forwarding.</li><li>• Park call recall.</li><li>• Dedicated park slot per extension.</li><li>• Call transfer blocking.</li><li>• Class of restriction: forced authorization for toll calls.</li></ul>
ACD, AA, and Hunt Group Enhancements	
Conferencing enhancements	
Conferencing enhancements	
Enhanced phone features	



### Cisco Unified Communications Manager Express - Legacy Telephony Features

## Cisco Unified Communications Manager Express Legacy Telephony Features

Feature	Description
Support for either PBX or key system functionality	Distinctive ring patterns for internal or external calls.
ACD, AA, and Hunt Group Enhancements	
Conferencing enhancements	
Conferencing enhancements	
Enhanced phone features	



### Cisco Unified Communications Manager Express - Legacy Telephony Features



## Cisco Unified Communications Manager Express Feature Sets



*PBX or square mode  
dial-plan options,  
remote teleworker,  
and CME support.*



### Cisco Unified Communications Manager Express - Feature Sets

Cisco Unified Communications Manager Express 4.2 baseline features include an extensive feature set with PBX or square mode dial-plan options, remote teleworker, and CME support.

Support for CRM and Unified Call Connector includes Cisco Unity Express, CUE 2.3 base, comprehensive voice mail, and Automated Attendant functionality such as Desktop Messaging (IMAP), VoiceView Express, and Automated Attendant.

Other features include multisite networking for three to five sites maximum, CME and CUE, CME- and CUE-based localization, and Cisco VT Advantage.

## Cisco Unified Communications Manager Express Call Control Features



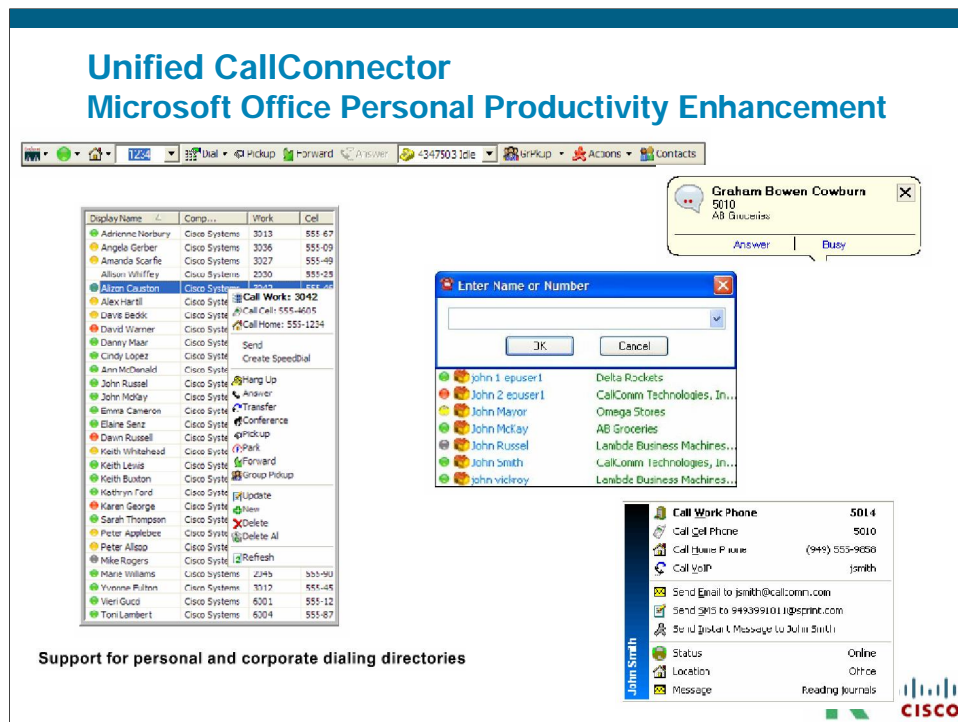
Call Control supports either PBX or Key System functionality, plus:

- Legacy telephony features, such as:
  - Call transfer, paging, intercom, and call coverage.
  - Call park, MOH, and night bell.
  - Hunt Groups, basic ACD, and reporting.
  - Ad hoc and "Meet Me" conferencing.
  - DID/Operator console.
- Converged IP communications features, such as:
  - Video telephony.
  - Wireless (802.11) integration.
  - Soft phone support.
  - Desktop integration.
  - SIP support.



Call Control supports either PBX or Key System functionality, plus legacy telephony features such as call transfer, paging, intercom, call coverage, call park, MOH, and night bell. It also supports Hunt Groups, basic ACD, and reporting, as well as ad hoc and "Meet Me" conferencing and the DID/Operator console.

Converged IP communications features include video telephony, wireless (802.11) integration, soft phone support, desktop integration, and SIP support.



## Unified CallConnector – Microsoft Office Personal Productivity Enhancement

The Cisco Unified CallConnector Personal Suite includes CallConnector for Outlook or Internet Explorer. The easy-to-use toolbar for call control will dial, answer, transfer, park, and pickup calls. It provides support for personal directories as well as corporate dialing directories. Also featured are screen pop-on inbound calls with the CLID and name and the ability to quick dial from the toolbar or by highlighting a number from any application.

By adding the CallConnector Server for Presence, you get access to the Display Location feature, allowing you to see the availability and phone status of users; the Quick Message IM client; and the ability to change your own status.

## Localization Support Languages

Language	Variation	UC 520
English	US	✓
German		✓
French	European	✓
Spanish	European	✓
Italian		✓
Portuguese	Brazilian	VM
Spanish	Latin American	VM
Danish		✓
English	British	✓
Japanese		✓
Spanish	Mexican	VM
French	Canadian	VM
Chinese	Mandarin	✓
Korean		✓

Additional Localization Support available on the Cisco Unified IP Phones



Portuguese



Russian



Polish



Finnish



Bulgarian



Norwegian



Dutch

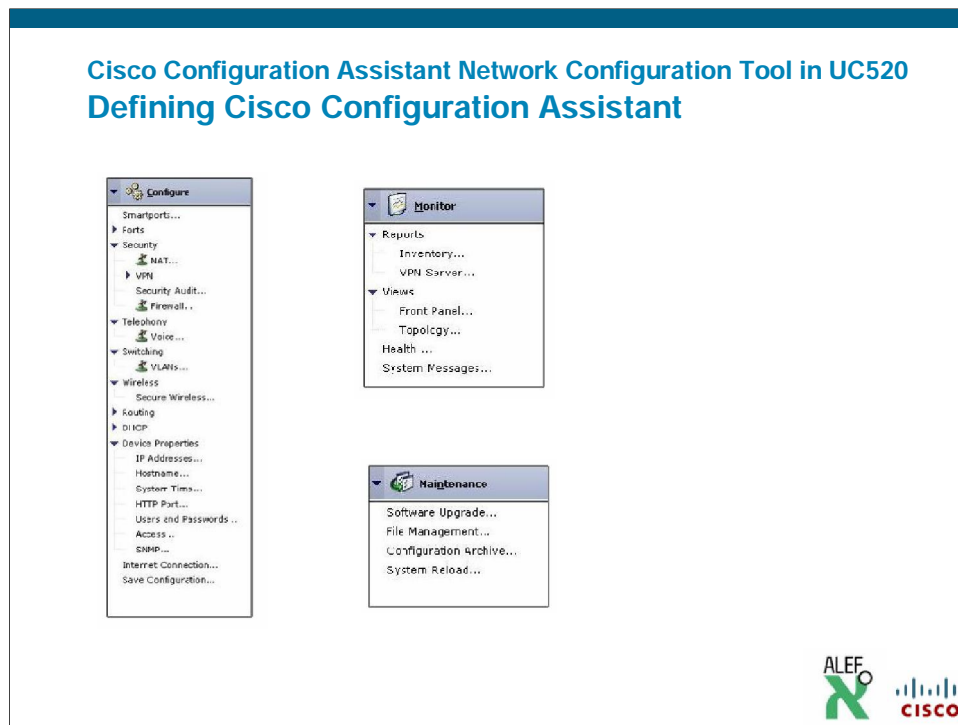


Swedish



### Localization support – Languages



The UC520 supports all the localizations available on Cisco Unified Communications Manager Express 4.2 and Cisco Unity Express 2.3.



## Cisco Configuration Assistant Network Configuration Tool in UC520 – Defining Cisco Configuration Assistant

Cisco Configuration Assistant (CCA) is a PC-based GUI tool that facilitates system configuration of telephony, security, wireless networking, switching, routing, DHCP, and SNMP. It helps you to monitor the system by providing insight on system health, system messages, and inventory reporting. It also assists in system maintenance by providing easy steps for software upgrades, flash file management, and archiving configuration and data information.



Cisco Configuration Assistant Network Configuration Tool in UC520 Cisco Configuration Assistant Management	
Item	Description
Smart Assist	<p>The Smart Assist will automatically assign extensions to phones for ease of deployment and future phone additions.</p> <p>Cisco SmartAssistant features offer:</p> <ul style="list-style-type: none"><li>• Improved ease of set up and deployment of Cisco devices.</li><li>• Help in optimizing network performance and security.</li><li>• Aid in the ongoing operation of Cisco networks as they grow.</li></ul>
Simple Network Management Protocol	



## Cisco Configuration Assistant Network Configuration Tool in UC520 – Cisco Configuration Assistant Management

To assist you in managing the UC520, Cisco provides many assist features.

Cisco Configuration Assistant Network Configuration Tool in UC520 Cisco Configuration Assistant Management	
Item	Description
Smart Assist	Simple Network Management Protocol (SNMP) support with Cisco Unified Operations Manager or third-party management consoles is provided.
Simple Network Management Protocol	



## Cisco Configuration Assistant Network Configuration Tool in UC520 – Cisco Configuration Assistant Management

To assist you in managing the UC520, Cisco provides many assist features.

## Cisco Configuration Assistant Network Configuration Tool in UC520 Cisco Configuration Assistant Options

CCA Configuration Options	Description
Voice	<ul style="list-style-type: none"><li>• Device parameters: voice system type (PBX or KeySystem), general info (hostname, timezone, locale, and system message).</li><li>• Network parameter: voice VLAN setting and NTP setting.</li><li>• Dial plan/voice mail: dial plan, Auto Attendant, and voice mail.</li><li>• SIP trunk parameter: provider, proxy, registrar, and digest.</li><li>• Voice system features: emergency number, paging, call park, and Hunt Group.</li><li>• User parameters: MAC address, user ID/password, name, CFB, CFNA, and class of restriction.</li></ul>
Security	
Wireless	
Switching	
Routing	
DHCP	
Miscellaneous	



## Cisco Configuration Assistant Network Configuration Tool in UC520 – Cisco Configuration Assistant Options

CCA includes configuration for a number of options.



## Cisco Configuration Assistant Network Configuration Tool in UC520 Cisco Configuration Assistant Options

CCA Configuration Options	Description
Voice	<ul style="list-style-type: none"><li>• NAT: outside interface, and port translation config for applications.</li><li>• Firewall: inside interfaces, adjustable security levels, and DMZ config.</li><li>• VPN: EZVPN server settings, user accounts, and preshared keys.</li></ul>
Security	
Wireless	
Switching	
Routing	
DHCP	
Miscellaneous	



## Cisco Configuration Assistant Network Configuration Tool in UC520 – Cisco Configuration Assistant Options

## Cisco Configuration Assistant Network Configuration Tool in UC520 Cisco Configuration Assistant Options

CCA Configuration Options	Description
Voice	SSID and RADIUS server configurations. Also the configuration of wireless security and encryption options.
Security	
Wireless	
Switching	
Routing	
DHCP	
Miscellaneous	



## Cisco Configuration Assistant Network Configuration Tool in UC520 – Cisco Configuration Assistant Options

## Cisco Configuration Assistant Network Configuration Tool in UC520 Cisco Configuration Assistant Options

CCA Configuration Options	Description
Voice	Creating VLANs.
Security	
Wireless	
Switching	
Routing	
DHCP	
Miscellaneous	



## Cisco Configuration Assistant Network Configuration Tool in UC520 – Cisco Configuration Assistant Options

## Cisco Configuration Assistant Network Configuration Tool in UC520 Cisco Configuration Assistant Options

CCA Configuration Options	Description
Voice	Adding/deleting static routes.
Security	
Wireless	
Switching	
Routing	
DHCP	
Miscellaneous	



## Cisco Configuration Assistant Network Configuration Tool in UC520 – Cisco Configuration Assistant Options

## Cisco Configuration Assistant Network Configuration Tool in UC520 Cisco Configuration Assistant Options

CCA Configuration Options	Description
Voice	Adding/deleting/editing DHCP pools.
Security	
Wireless	
Switching	
Routing	
DHCP	
Miscellaneous	



## Cisco Configuration Assistant Network Configuration Tool in UC520 – Cisco Configuration Assistant Options

## Cisco Configuration Assistant Network Configuration Tool in UC520 Cisco Configuration Assistant Options

CCA Configuration Options	Description
Voice	<ul style="list-style-type: none"><li>Assigning an IP address to VLANs and interfaces.</li><li>Hostname, system time, user access.</li><li>SNMP community strings, and trap managers.</li></ul>
Security	
Wireless	
Switching	
Routing	
DHCP	
Miscellaneous	



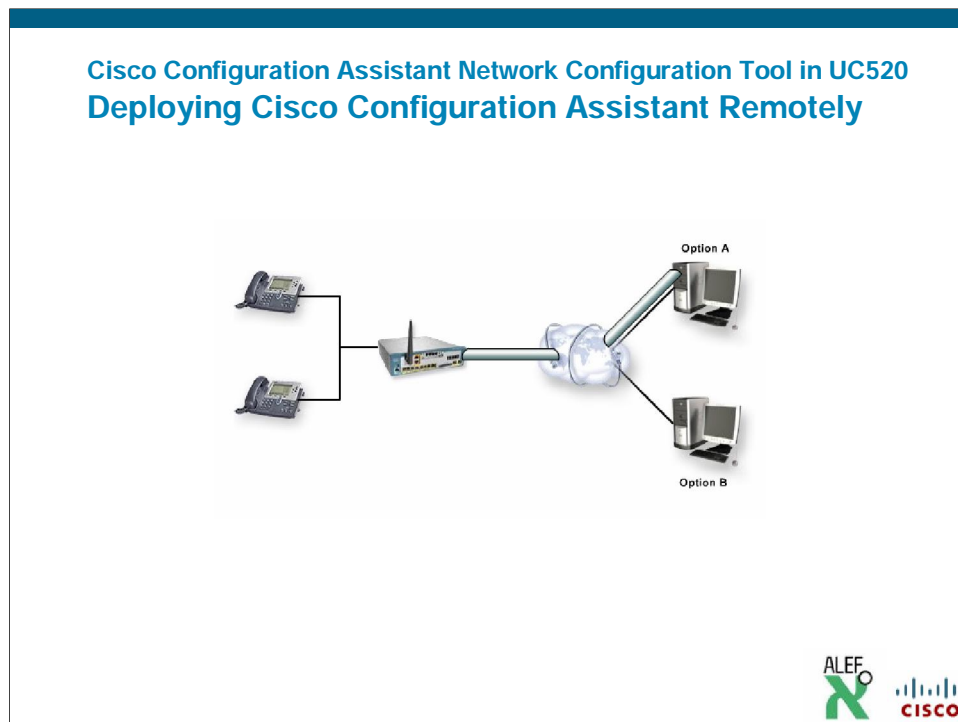
## Cisco Configuration Assistant Network Configuration Tool in UC520 – Cisco Configuration Assistant Options

## Cisco Configuration Assistant Network Configuration Tool in UC520 Deploying Cisco Configuration Assistant Locally



### Cisco Configuration Assistant Network Configuration Tool UC520 – Deploying Cisco Configuration Assistant Locally

There are two options for CCA deployment: to connect the CCA workstation directly to one of the PoE ports on the UC520 or to connect the CCA workstation to the PC-port of an IP Phone.



### **Cisco Configuration Assistant Network Configuration Tool UC520 – Deploying Cisco Configuration Assistant Remotely**

There are two options for remote access CCA deployment. The recommended process is to set up a VPN tunnel. The VPN should be preconfigured on the UC520 or the edge router at the customer premise. Use either a Cisco VPN Client or a Microsoft VPN Client and set up a session from CCA to the public IP address of the UC520 or the ISR.

The second method is to configure remote access without VPN. To do this, your firewall settings on UC520 require modification. Allow the IP address of the management station used to manage the deployment.



