



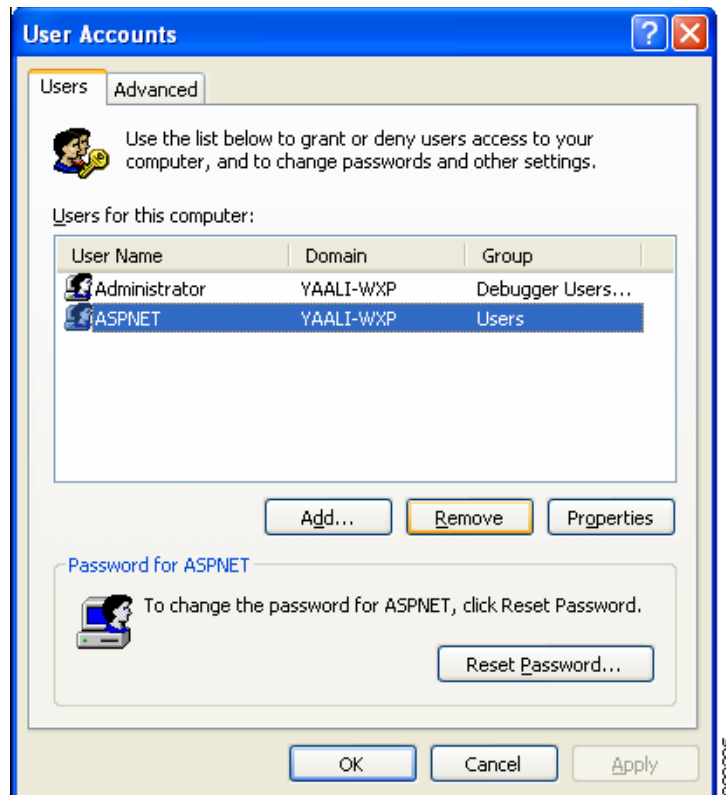
APPENDIX C

Configuring a Single-User Account for FIPS

To configure a single-user account for FIPS on a PC, follow these instructions:

- Step 1** Open the Windows Control Panel by clicking **Start > Settings > Control Panel**.
- Step 2** Double-click **User Accounts** and [Figure C-1](#) appears.

Figure C-1 Windows User Accounts Window



- Step 3** Ensure that the User tab lists only one administrator account. Remove all other user accounts, by highlighting the user account and clicking **Remove**.

For additional details, refer to Microsoft's Knowledge Base articles on creating and configuring user accounts in Windows.
