



CHAPTER 3

Preparing for Data Migration

This chapter describes how to prepare for a data migration job. It includes the following sections:

- [Planning a Data Migration Job, page 3-1](#)
- [Pre-Migration Configuration, page 3-2](#)

Planning a Data Migration Job

Traditional data migration is a complex procedure, which requires coordination of activities that may be performed by vendor representatives and multiple IT groups. Activities may need to occur at specific times to minimize service disruption.

Cisco MDS DMM is designed to minimize the dependency on multiple organizations, and is designed to minimize service disruption. However, even with Cisco MDS DMM, data migration is a fairly complex activity. We recommend that you create a plan to ensure a smooth data migration.

To create your data migration plan, use the following steps:

1. Document the SAN topology for the data migration. Identify and obtain any additional equipment and software licenses.
2. Design the mapping of source LUNs to destination LUNs.

Identify the LUNs that need to be migrated and the impacted servers. The Server Lunmap Discovery (SLD) tool provides assistance in identifying this information. (See [Checking Storage ASL Status, page 3-2](#) for additional information about the SLD tool).

Calculate the storage requirements of the new LUNs. Identify the LUNs on the new storage subsystem. The new storage LUNs need to be the same size or larger than the matching existing storage LUN.

3. Develop a schedule for the migration job.

Identify any required equipment and resources. Availability of external resources (such as a vendor service representative) may impact your schedule.

Identify periods of low user activity and I/O activity, to minimize disruption during the migration. Cisco MDS DMM provides features to minimize user impact. For example, you can schedule the migration to run during nonpeak hours or configure a slow migration rate.

Identify any required pre-migration configuration changes. (These changes are described in the following sections.)

Plan for one short window in which service is not be available during server reconfiguration. (This enables you to access the new storage after the data migration is completed).

Send documentation comments to mdsfeedback-doc@cisco.com

4. As a precaution, ensure that any critical data on the existing storage has a recent back up.

Pre-Migration Configuration

Prior to performing a data migration job, ensure that the existing storage, the new storage, and the fabric switches are configured as required. The following sections describe the tasks to be completed:

- [Configuring Switches and SSMs, page 3-2](#)
- [Configuring the Existing and New Storage, page 3-2](#)
- [Configuring Enclosures, page 3-4](#)
- [Configuring the SAN Fabric, page 3-5](#)

Configuring Switches and SSMs

The Cisco MDS DMM feature executes on the SSM. The DMM feature supports data migration for storage LUNs exposed anywhere on the SAN fabric (that is, the storage port can be connected to the switch hosting the SSM or to another switch).

If necessary, provision an SSM on an MDS switch in each fabric. We recommend that you install the SSMs on the switches that are connected to the existing storage ports.

If the existing or new storage port is on a different switch than the SSM, ISL network traffic will increase during the migration, as all traffic between the existing and new storage is directed through the SSM. Also, if the server port is on a different switch than the SSM, ISL network traffic will increase during the migration, as all traffic between the server and the storage is directed through the SSM.

Ensure that Cisco MDS DMM is the only active intelligent application on the SSMs being used for the data migration job.

Configuring the Existing and New Storage

Complete the following configuration tasks for the storage devices:

- **New Storage**—Connect the new storage to the SAN. Create LUN maps and LUN masks. Configure access lists for the new storage.
- **Existing Storage**—Check that the LUNs are mapped.
- **VSANs**—Ensure that the existing storage and new storage port pair in each fabric is configured in the same VSAN. Also ensure that for each existing storage port VSAN, there is at least one new storage port and the server port has to be configured in the same VSAN.
- **Zones**—Optionally, you can reconfigure zoning to add new storage. Cisco MDS DMM does not enforce zoning for the new storage. If you do not configure the zoning before migration, you must complete this action before server accesses the new storage.

Checking Storage ASL Status

The DMM feature contains the Array-Specific Library (ASL), which is a database of information about specific storage array products. DMM uses the ASL to correlate the LUN maps between multi-path port pairs.

Send documentation comments to mdsfeedback-doc@cisco.com

Use the SLD tool to check the ASL status of LUNs on a storage array port. If the LUNs are all ASL=Yes, the Cisco MDS DMM feature automatically correlates the LUN maps.

If some or all of the LUNs result in ASL=No, contact Cisco support.

The SLD tool is launched from the supervisor module CLI. To check the status of a storage port, perform this task:

	Command	Purpose
Step 1	Router# sld module <i>module number</i> vsan <i>vsan no</i> server-pwvn <i>server pWWN</i> target-pwvn <i>target pWWN</i> discover	Runs the SLD tool to discover the LUNs associated with the specified source/destination port pair.
Step 2	Router# show sld module <i>module number</i> vsan <i>vsan no</i> server-pwvn <i>server pWWN</i> target-pwvn <i>target pWWN</i> [detail]	Displays the ASL status for LUNs associated with the specified source/destination port pair. The detail option displays the detailed output for the source/destination port pair.

The following example shows how to display ASL status for a storage port:

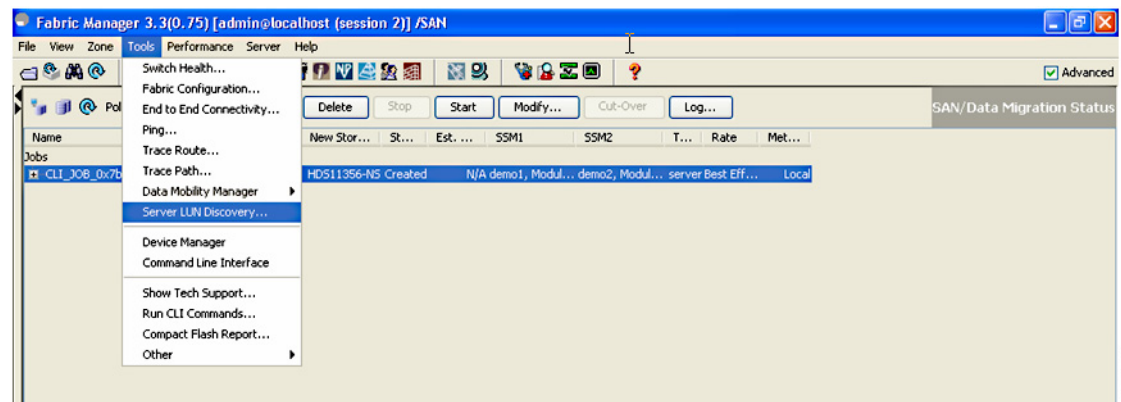
```
router# show sld module 4 vsan 100 server-pwvn 21:00:00:e0:8b:08:5e:3e target-pwvn
50:06:0e:80:04:2c:5c:70
```

```
=====
Id    LUN Id  Device Type  Size   Vendor Product Id  Serial Number  ASL  Status
=====
1     0x0    DASD         1.95GB VendorA ModelB5       11356          Yes  Active
2     0x1    DASD         1.95GB VendorA ModelB5       11356          Yes  Active
3     0x2    DASD         1.95GB VendorA ModelB5       11356          Yes  Active
4     0x3    DASD         1.95GB VendorA ModelB5       11356          Yes  Active
=====
```

The SLD tool can also be launched from DMM GUI. To perform Server LUN Discovery, complete the following steps:

1. Choose **Tools > Server LUN Discovery**.

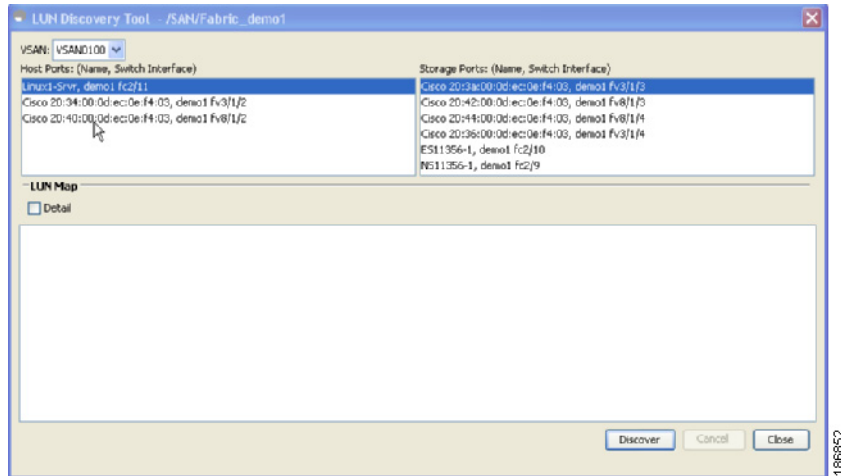
Figure 3-1 Server LUN Discovery



2. Select the **VSAN** and then select the **Host Port** for which you want to do the discovery and choose the **Storage Port** on which you have to do the discovery.

Send documentation comments to mdsfeedback-doc@cisco.com

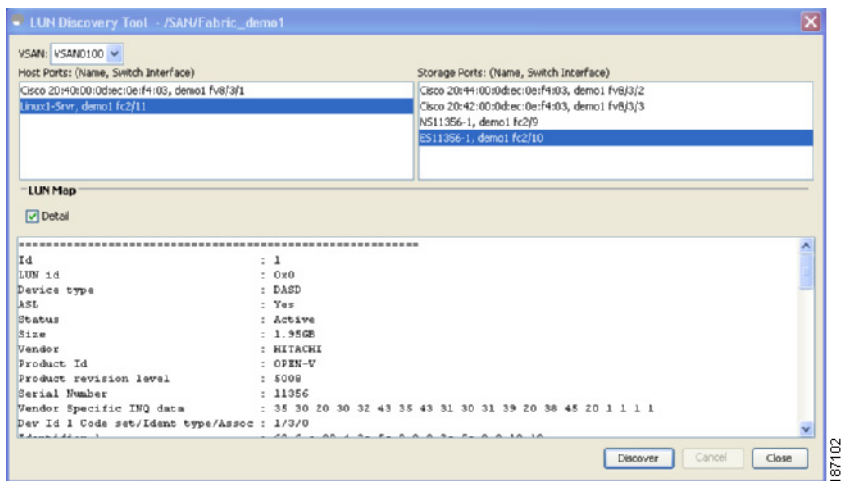
Figure 3-2 Server LUN discovery tool (SAN, host and storage port)



3. Click **Discover**.

The following example shows how to display the ASL status:

Figure 3-3 Example



Note

We recommend not to run the SLD tool on a server storage port pair that is already configured in a DMM job.

Configuring Enclosures

Before creating a migration job, you need to ensure that the server and storage ports are included in enclosures.

Send documentation comments to mdsfeedback-doc@cisco.com

If the server ports are not already included in existing enclosures, you need to create enclosures for the server ports. If the server has multiple single-port HBAs, all of these ports need to be included in one enclosure. Enclosures for existing and new storage ports are created automatically.

For information on how to configure enclosures, see the *Cisco MDS 9000 Family Fabric Manager Configuration Guide*.

Configuring the SAN Fabric

If the SAN is a heterogeneous SAN, you may need to install new MDS switches or adjust the SAN topology to meet DMM requirements. For additional information about SAN topologies, refer to [Chapter 6, “Understanding DMM Topologies.”](#)

Send documentation comments to mdsfeedback-doc@cisco.com