



CHAPTER 18

Managing System Hardware

This chapter provides details on how to manage system hardware other than services and switching modules and how to monitor the health of the switch. It includes the following sections:

- [Displaying Switch Hardware Inventory, page 18-1](#)
- [Running the CompactFlash Report, page 18-2](#)
- [Displaying the Switch Serial Number, page 18-3](#)
- [Displaying Power Usage Information, page 18-3](#)
- [Power Supply Configuration Modes, page 18-4](#)
- [About Crossbar Management, page 18-7](#)
- [About Module Temperature, page 18-10](#)
- [About Fan Modules, page 18-11](#)
- [Default Settings, page 18-12](#)

Displaying Switch Hardware Inventory

To view information on the field replaceable units (FRUs) in the switch, including product IDs and serial numbers, follow these steps:

- Step 1** In Fabric Manager, choose a fabric or switch in the Logical Domains pane, then expand **Switches** and select **Hardware** in the Physical Attributes pane.

You see a list like the one shown in [Figure 18-1](#).

Figure 18-1 Fabric Manager Hardware Inventory

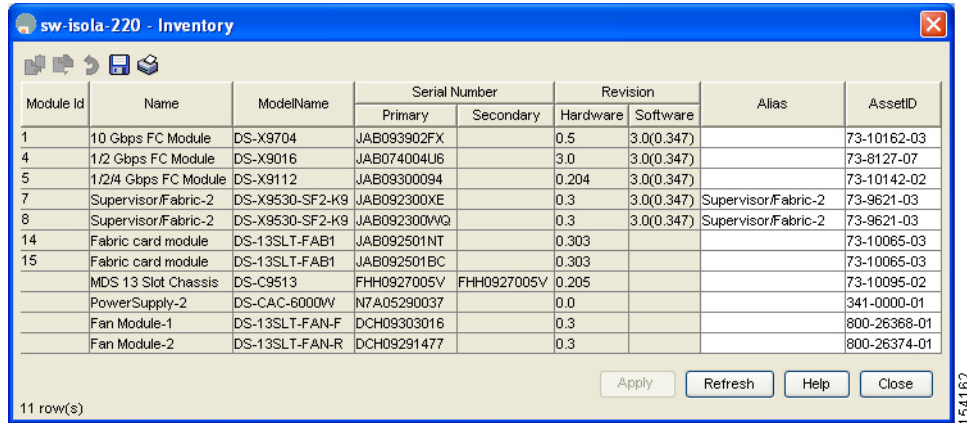
Switch	Name	ModelName	Serial No Primary	Serial No Secondary	HW/Rev	SW/Rev	Alias	AssetID	OperStatus
172.22.31.185	MDS 9 Slot Chassis	DS-C9509	0		0.0			73-8014-02	n/a
172.22.31.185	Supervisor/Fabric-1	DS-X9530-SF1-K9	JAB063404eh		0.602	3.0(0.310)	SupervisorFabric-1	73-7523-06	ok
172.22.31.185	PowerSupply-1	DS-CAC-2500W	ART0620008H		1.0			341-0061-01	ok
172.22.31.185	Fan Module-2				0.0				Unknown: 0
172.22.31.185	Fan Module-1	IWS-9SLOT-FAN			0.0			800-22342-01	ok

154164

Send documentation comments to mdsfeedback-doc@cisco.com

- Step 2** In Device Manager, choose **Physical > Inventory**.
You see a list like the one shown in [Figure 18-2](#).

Figure 18-2 Device Manager Hardware Inventory



Module Id	Name	ModelName	Serial Number		Revision		Alias	AssetID
			Primary	Secondary	Hardware	Software		
1	10 Gbps FC Module	DS-X9704	JAB093902FX		0.5	3.0(0.347)		73-10162-03
4	1/2 Gbps FC Module	DS-X9016	JAB074004U6		3.0	3.0(0.347)		73-8127-07
5	1/24 Gbps FC Module	DS-X9112	JAB09300094		0.204	3.0(0.347)		73-10142-02
7	Supervisor/Fabric-2	DS-X9530-SF2-K9	JAB092300XE		0.3	3.0(0.347)	Supervisor/Fabric-2	73-9621-03
8	Supervisor/Fabric-2	DS-X9530-SF2-K9	JAB092300WQ		0.3	3.0(0.347)	Supervisor/Fabric-2	73-9621-03
14	Fabric card module	DS-13SLT-FAB1	JAB092501NT		0.303			73-10065-03
15	Fabric card module	DS-13SLT-FAB1	JAB092501BC		0.303			73-10065-03
	MDS 13 Slot Chassis	DS-C9513	FHH0927005V	FHH0927005V	0.205			73-10095-02
	PowerSupply-2	DS-CAC-6000W	N7A05290037		0.0			341-0000-01
	Fan Module-1	DS-13SLT-FAN-F	DCH09303016		0.3			800-26368-01
	Fan Module-2	DS-13SLT-FAN-R	DCH09291477		0.3			800-26374-01

You see system attributes for multiple switches in [Figure 18-1](#) and [Figure 18-2](#). To see attributes for a single switch in Device Manager, double click the graphic of the switch in the main screen.



Note

To configure modules, see [Chapter 19, "Managing Modules."](#)

Running the CompactFlash Report

In Cisco SAN-OS Release 3.1(2), you can run the CompactFlash Check Utility to automatically scan your fabric and generate a report that shows the status of CompactFlash on the following modules:

- DS-X9016
- DS-X9032
- DS-X9302-14K9
- DS-X9308-SMIP
- DS-X9304-SMIP
- DS-X9530-SF1-K9

The CompactFlash report can be used on switches running Cisco SAN-OS Release 2.x or later. Before running the CompactFlash report, you must complete the following tasks:

- Upgrade to Cisco Fabric Manager Release 3.1(2).
- Download the CompactFlash Check Utility (**m9000-1c1-gplug-mz.1.0.2.bin**).
- Run the CompactFlash report.

Send documentation comments to mdsfeedback-doc@cisco.com

Step 1 Download **m9000-lc1-gplug-mz.1.0.2.bin** from the Software Center on Cisco.com (<http://www.cisco.com/cgi-bin/tablebuild.pl/mds-utilities>). You must have a CCO account to access the files on the Software Center.

Step 2 Save the CompactFlash Check Utility to a tftp server. You will need the tftp server address.

To run the CompactFlash report using Fabric Manager, follow these steps:

Step 1 Choose **Tools > Compact Flash Report**.



Note In the **Flash Check Utility URL tftp://** field, you must enter the tftp server location where you saved the CompactFlash Check Utility.

Step 2 Deselect the check box for the switch(es) for which you do not want to run the CompactFlash report.

Step 3 Specify where you want the report file to be saved.

Step 4 Click **OK** to run the report.



Note A green indicator light showing **Success: Finished check** only indicates that the switch was checked. You must examine the log file for CompactFlash status.

Step 5 If you see the message **Error: Failed to copy plugin file**, verify that the path you entered in the **Flash Check Utility URL tftp://** field is correct.

Step 6 If necessary, enter the correct location in the **Flash Check Utility URL tftp://** field.

Step 7 Click **OK** to run the report again. Open the log file report for detailed information about CompactFlash status.

Displaying the Switch Serial Number

The serial number of your Cisco MDS 9000 Family switch can be obtained by looking at the serial number label on the back of the switch (next to the power supply) or from Fabric Manager by selecting that switch in the Logical Domains pane, then expanding **Switches** and selecting **Hardware** in the Physical Attributes pane in Fabric Manager. The Serial No Primary column in the Information pane shows the serial number.

Displaying Power Usage Information

Use Fabric Manager to display power usage. Select a switch in the Logical Domains pane, expand **Switches** and select **Hardware** in the Physical Attributes pane, then click the **Power Supplies** tab in the Information pane to display actual power usage information for the entire switch. See the first example under [Power Supply Configuration Modes](#).

[Send documentation comments to mdsfeedback-doc@cisco.com](mailto:mdsfeedback-doc@cisco.com)

**Note**

In a Cisco MDS 9500 Series switch, power usage is reserved for both supervisors whether one or both supervisor modules are present.

Power Supply Configuration Modes

Switches in the MDS 9000 Family have two redundant power supply slots. The power supplies can be configured in either redundant or combined mode.

- Redundant mode—Uses the capacity of one power supply only. This is the default mode. In case of power supply failure, the entire switch has sufficient power available in the system.
- Combined mode—Uses the combined capacity of both power supplies. In case of power supply failure, the entire switch can be shut down (depends on the power used) causing traffic disruption. This mode is seldom used, except in cases where the switch has two low power supply capacities but a higher power usage.

**Note**

The chassis in the Cisco MDS 9000 Family uses 1200 W when powered at 110 V, and 2500 W when powered at 220 V.

To configure the power supply mode, follow these steps:

- Step 1** In the Fabric Manager Physical Attributes pane, expand **Switches** and then select **Hardware**. Click the **Power Supplies** tab.

You see the power supply information screen shown in [Figure 18-3](#).

Low TotalAvailable (< 200.0W) values for non-2-slot chassis are highlighted in yellow, as inserting a new card into the switch requires power around 180W.

Figure 18-3 Power Supply Information in Fabric Manager

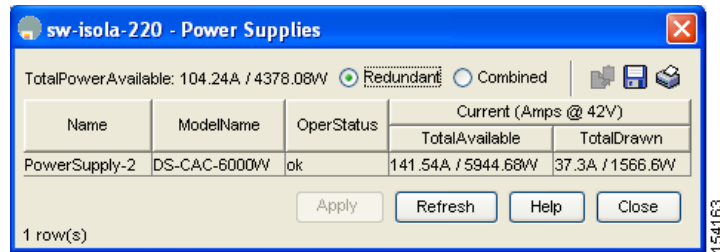
Switch	Name	ModelName	OperStatus	RedundancyMode	Capacity	Drawn	TotalAvailable	Units
sw172-22-46-220	PowerSupply-1	DS-CAC-2500W	ok	redundant	2331.0W / 55.5A	1617.0W / 38.5A	714.0W / 17.0A	Amps @ 42V
sw172-22-46-220	PowerSupply-2	DS-CAC-2500W	offEnvPower	redundant	n/a	n/a	714.0W / 17.0A	Amps @ 42V
sw172-22-46-223	PowerSupply-1	PWR-950-AC	ok	redundant	919.38W / 21.89A	417.06W / 9.93A	502.32W / 11.96A	Amps @ 42V
sw172-22-46-233	PowerSupply-1	DS-CAC-845W	ok	redundant	800.1W / 19.05A	538.02W / 12.81A	262.08W / 6.24A	Amps @ 42V
sw172-22-46-233	PowerSupply-2	DS-CAC-845W	offEnvPower	redundant	n/a	n/a	262.08W / 6.24A	Amps @ 42V
sw172-22-47-133	PowerSupply-1	DS-CAC-300W	offEnvPower	redundant	n/a	n/a	48.72W / 1.16A	Amps @ 42V
sw172-22-47-133	PowerSupply-2	PWR-C49-300AC	ok	redundant	299.88W / 7.14A	251.16W / 5.98A	48.72W / 1.16A	Amps @ 42V
sw172-22-47-132	PowerSupply-1	PWR-C49-300AC	ok	redundant	149.94W / 3.57A	125.58W / 2.99A	48.72W / 1.16A	Amps @ 42V
sw172-22-47-132	PowerSupply-2	PWR-C49-300AC	ok	redundant	149.94W / 3.57A	125.58W / 2.99A	48.72W / 1.16A	Amps @ 42V
sw172-22-46-225	PowerSupply-1	DS-CAC-300W	offEnvPower	redundant	n/a	n/a	108.0W / 9.0A	Amps @ 12V
sw172-22-46-225	PowerSupply-2	DS-CAC-300W	ok	redundant	300.0W / 25.0A	192.0W / 16.0A	108.0W / 9.0A	Amps @ 12V
sw172-22-46-221	PowerSupply-2	DS-CAC-1900W	ok	redundant	1019.34W / 24.27A	736.68W / 17.54A	282.66W / 6.73A	Amps @ 42V
sw172-22-47-20	PowerSupply-1	PWR-C49-300AC	offEnvPower	redundant	n/a	n/a	48.72W / 1.16A	Amps @ 42V
sw172-22-47-20	PowerSupply-2	PWR-C49-300AC	ok	redundant	299.88W / 7.14A	251.16W / 5.98A	48.72W / 1.16A	Amps @ 42V
sw172-22-47-167	PowerSupply-2	DS-CAC-845W	ok	redundant	800.1W / 19.05A	466.2W / 11.1A	333.9W / 7.95A	Amps @ 42V
sw172-22-46-224	PowerSupply-1	DSAC300W	ok	redundant	150.0W / 12.5A	108.0W / 9.0A	84.0W / 7.0A	Amps @ 12V
sw172-22-46-224	PowerSupply-2	DSAC300W	ok	redundant	150.0W / 12.5A	108.0W / 9.0A	84.0W / 7.0A	Amps @ 12V
sw172-22-46-174	PowerSupply-1	DS-CAC-6000W	ok	redundant	2844.66W / 67.73A	1807.68W / 43.04A	1036.98W / 24.69A	Amps @ 42V
sw172-22-46-222	PowerSupply-1	DS-CAC-845W	onButFanFailed	redundant	400.26W / 9.53A	128.52W / 3.06A	543.06W / 12.93A	Amps @ 42V
sw172-22-46-222	PowerSupply-2	DS-CAC-845W	ok	redundant	399.84W / 9.52A	128.52W / 3.06A	543.06W / 12.93A	Amps @ 42V

- Step 2** In Device Manager, click **Physical > Power Supplies**.

You see the screen in [Figure 18-4](#).

Send documentation comments to mdsfeedback-doc@cisco.com

Figure 18-4 Power Supply Information in Device Manager



- Step 3** Configure the power attributes for the power supply.
- Step 4** Click **Apply** in Device Manager or click the **Apply Changes** icon in Fabric Manager.



Note

See the “[Displaying Power Usage Information](#)” section on page 18-3 to view the current power supply configuration.

Power Supply Configuration Guidelines

Follow these guidelines when configuring power supplies:

1. When power supplies with different capacities are installed in the switch, the total power available differs based on the configured mode, either redundant or combined:
 - a. Redundant mode—the total power is the lesser of the two power supply capacities. For example, suppose you have the following usage figures configured:

Power supply 1 = 2500 W
 Additional power supply 2 = not used
 Current usage = 2000 W
 Current capacity = 2500 W

Then the following three scenarios differ as specified (see [Table 18-1](#)):

Scenario 1: If 1800 W is added as power supply 2, then power supply 2 is shut down.
Reason: 1800 W is less than the usage of 2000 W.

Scenario 2: If 2200 W is added as power supply 2, then the current capacity decreases to 2200 W.
Reason: 2200 W is the lesser of the two power supplies.

Scenario 3: If 3000 W is added as power supply 2, then the current capacity value remains at 2500 W.
Reason: 2500 W is the lesser of the two power supplies.

Table 18-1 Redundant Mode Power Supply Scenarios

Scenario	Power Supply 1 (W) ¹	Current Usage (W)	Insertion of Power Supply 2 (W)	New Capacity (W)	Action Taken by Switch
1	2500	2000	1800	2500	Power supply 2 is shut down.

Send documentation comments to mdsfeedback-doc@cisco.com

Table 18-1 Redundant Mode Power Supply Scenarios (continued)

Scenario	Power Supply 1 (W) ¹	Current Usage (W)	Insertion of Power Supply 2 (W)	New Capacity (W)	Action Taken by Switch
2	2500	2000	2200	2200	Capacity becomes 2200 W.
3	2500	2000	3300	2500	Capacity remains the same.

1. W = Watts

- b. Combined mode—the total power is twice the lesser of the two power supply capacities.

For example, suppose you have the following usage figures configured:

Power supply 1 = 2500 W

Additional Power supply 2 = not used

Current Usage = 2000 W

Current capacity = 2500 W

Then, the following three scenarios differ as specified (see [Table 18-2](#)):

Scenario 1: If 1800 W is added as power supply 2, then the capacity increases to 3600 W.

Reason: 3600 W is twice the minimum (1800 W).

Scenario 2: If 2200 W is added as power supply 2, then the current capacity increases to 4400 W.

Reason: 4400 W is twice the minimum (2200 W).

Scenario 3: If 3000 W is added as power supply 2, then the current capacity increases to 5000 W.

Reason: 5000 W is twice the minimum (2500 W).

Table 18-2 Combined Mode Power Supply Scenarios

Scenario	Power Supply 1 (W) ¹	Current Usage (W)	Insertion of Power Supply 2 (W)	New Capacity (W)	Action Taken by Switch
1	2500	2000	1800	3600	Power is never shut down. The new capacity is changed.
2	2500	2000	2200	4400	
3	2500	2000	3300	5000	

1. W = Watts

2. When you change the configuration from combined to redundant mode and the system detects a power supply that has a capacity lower than the current usage, the power supply is shut down. If both power supplies have a lower capacity than the current system usage, the configuration is not allowed. Several configuration scenarios are summarized in [Table 18-3](#).

Scenario 1: You have the following usage figures configured:

Power supply 1 = 2500 W

Additional Power supply 2 = 1800 W

Current Usage = 2000 W

Current mode = combined mode (so current capacity is 3600 W)

You decide to change the switch to redundant mode. Then power supply 2 is shut down.

Send documentation comments to mdsfeedback-doc@cisco.com

Reason: 1800 W is the lesser of the two power supplies and it is less than the system usage.

Scenario 2: You have the following usage figures configured:

Power supply 1 = 2500 W

Additional Power supply 2 = 2200 W

Current Usage = 2000 W

Current mode = combined mode (so current capacity is 4400 W).

You decide to change the switch to redundant mode. Then the current capacity decreases to 2200 W.

Reason: 2200 W is the lesser of the two power supplies.

Scenario 3: You have the following usage figures configured:

Power supply 1 = 2500 W

Additional Power supply 2 = 1800 W

Current Usage = 3000 W

Current mode = combined mode (so current capacity is 3600 W).

You decide to change the switch to redundant mode. Then the current capacity decreases to 2500 W and the configuration is rejected.

Reason: 2500 W is less than the system usage (3000 W).

Table 18-3 Combined Mode Power Supply Scenarios

Scenario	Power Supply 1 (W) ¹	Current Mode	Current Usage (W)	Power Supply 2 (W)	New Mode	New Capacity (W)	Action Taken by Switch
1	2500	combined	2000	1800	N/A	3600	This is the existing configuration.
	2500	N/A	2000	1800	redundant	2500	Power supply 2 is shut down
2	2500	combined	2000	2200	N/A	4400	This is the existing configuration.
	2500	N/A	2000	2200	redundant	2200	The new capacity is changed.
3	2500	combined	3000	1800	N/A	3600	This is the existing configuration.
	2500	N/A	3000	1800	redundant	N/A	Rejected, so the mode reverts to combined mode.

1. W = Watts

About Crossbar Management

Cisco MDS SAN-OS Release 3.0(1) and later supports two types of hardware for the Cisco MDS 9500 Series Directors: Generation 1 and Generation 2.

Generation 1 consists of all hardware supported by Cisco SAN-OS prior to Release 3.0(1), including the following:

- Cisco MDS 9506 and 9509 Director chassis
- Supervisor-1 module
- 32-port 2-Gbps Fibre Channel switching module

Send documentation comments to mdsfeedback-doc@cisco.com

- 16-port 2-Gbps Fibre Channel switching module
- 8-port IP Storage Services (IPS-8) module
- 4-port IP Storage Services (IPS-4) module
- Storage Services Module (SSM)
- 14/2-port Multiprotocol Services (MPS-14/2) module

Generation 2 consists of all new hardware supported by Cisco SAN-OS Release 3.0(1) and later, including the following:

- Cisco MDS 9513 Director chassis
- Supervisor-2 module
- 48-port 4-Gbps Fibre Channel switching module
- 24-port 4-Gbps Fibre Channel switching module
- 12-port 4-Gbps Fibre Channel switching module
- 4-port 10-Gbps Fibre Channel switching module

The Cisco MDS 9500 Series Directors running Cisco MDS SAN-OS 3.0(1) or later support the following types of crossbars:

- Integrated crossbar—Located on the Supervisor-1 and Supervisor-2 modules. The Cisco MDS 9506 and 9509 Directors only use integrated crossbars.
- External crossbar—Located on an external crossbar switching module. Cisco MDS 9513 Directors require external crossbar modules.

Operational Considerations When Removing Crossbars

You can mix and match Generation 1 and Generation 2 hardware on the Cisco MDS 9500 Series Directors running Cisco MDS SAN-OS 3.0(1) or later without compromising the integrity and availability of your SANs based on Cisco MDS 9500 Series Directors.

To realize these benefits, you must consider the following operational requirements when *removing* crossbars for maintenance activities:

- [Graceful Shutdown of a Crossbar, page 18-8](#)
- [Backward Compatibility for Generation 1 Modules in Cisco MDS 9513 Directors, page 18-10](#)

Graceful Shutdown of a Crossbar

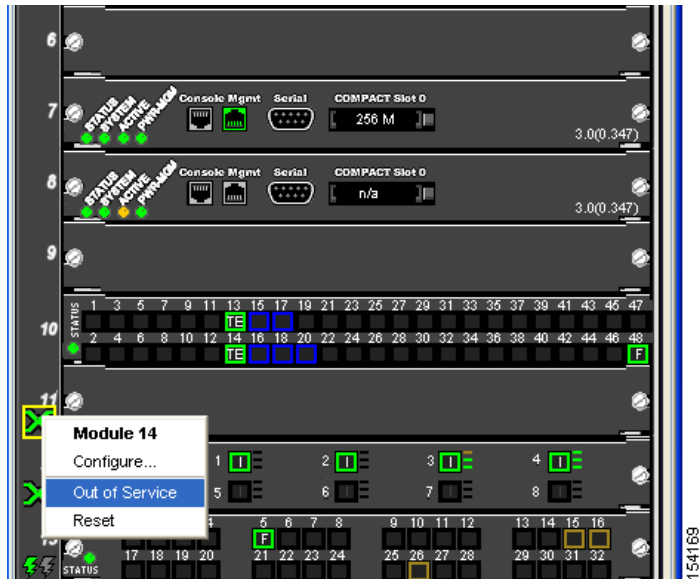
You must perform a graceful shutdown of a crossbar (integrated or external) before removing it from the MDS 9500 Series Director.

To perform a graceful shutdown of external crossbar switching modules in a Cisco MDS 9513 Director using Device Manager, follow these steps:

-
- Step 1** Right-click the supervisor module. Crossbars are indicated with a green X (see [Figure 18-5](#)).
You see the context menu for the supervisor module.

Send documentation comments to mdsfeedback-doc@cisco.com

Figure 18-5 Shutting Down a Crossbar



Step 2 Select **Out of Service** to gracefully shut down the integrated crossbar.



Note To reactivate the integrated crossbar, you must remove and reinsert or replace the Supervisor-1 or Supervisor-2 module.



Caution Taking the crossbar out of service may cause a supervisor switchover.

To perform a graceful shutdown of integrated crossbars on the supervisor module in a Cisco MDS 9509 or 9506 Director using Device Manager, follow these steps:

Step 1 Right-click the external crossbar switching module.

You see the context menu for that module.

Step 2 Select **Out of Service** to gracefully shut down the external crossbar switching module.



Note To reactivate the external crossbar module, you must remove and reinsert or replace the crossbar module.



Caution Taking the crossbar out of service may cause a supervisor switchover.

[Send documentation comments to mdsfeedback-doc@cisco.com](mailto:mdsfeedback-doc@cisco.com)

Backward Compatibility for Generation 1 Modules in Cisco MDS 9513 Directors

To provide backward compatibility for a Generation 1 module in a Cisco MDS 9513 chassis, the active and backup Supervisor-2 modules are associated to a specific crossbar module. The Supervisor-2 module in slot 7 is associated with crossbar module 1 and Supervisor-2 module in slot 8 is associated with crossbar module 2. You must plan for the following operational considerations before removing crossbar modules:

- Whenever a crossbar module associated with the active Supervisor-2 module goes offline or is brought online in a system that is already online, a stateful supervisor switchover occurs. This switchover does not disrupt traffic. Events that cause a crossbar module to go offline include the following:
 - Out-of-service requests
 - Physical removal
 - Errors
- Supervisor-2 module switchovers do *not* occur if the crossbar switching module associated with the *backup* Supervisor-2 module goes offline.



Note

Supervisor-2 module switchovers do *not* occur when removing crossbar switch modules on a Cisco MDS 9513 that only has Generation 2 modules installed.

About Module Temperature

Built-in, automatic sensors are provided in all switches in the Cisco MDS 9000 Family to monitor your switch at all times.

Each module (switching and supervisor) has four sensors: 1 (outlet sensor), 2 (intake sensor), 3 (onboard sensor), and 4 (onboard sensor). Each sensor has two thresholds (in degrees Celsius): minor and major.



Note

A threshold value of -127 indicates that no thresholds are configured or applicable.

- Minor threshold—When a minor threshold is exceeded, a minor alarm occurs and the following action is taken for all four sensors:
 - System messages are displayed.
 - Call Home alerts are sent (if configured).
 - SNMP notifications are sent (if configured).
- Major threshold—When a major threshold is exceeded, a major alarm occurs and the following action is taken.
 - For sensors 1, 3, and 4 (outlet and onboard sensors):
 - System messages are displayed.
 - Call Home alerts are sent (if configured).
 - SNMP notifications are sent (if configured).
 - For sensor 2 (intake sensor):
 - If the threshold is exceeded in a switching module, only that module is shut down.

Send documentation comments to mdsfeedback-doc@cisco.com

If the threshold is exceeded in an active supervisor module with HA-standby or standby present, only that supervisor module is shut down and the standby supervisor module takes over.

If you do not have a standby supervisor module in your switch, you have an interval of 2 minutes to decrease the temperature. During this interval the software monitors the temperature every five (5) seconds and continuously sends system messages as configured.

**Tip**

To realize the benefits of these built-in, automatic sensors on any switch in the Cisco MDS 9500 Series, we highly recommend that you install dual supervisor modules. If you are using a Cisco MDS 9000 Family switch without dual supervisor modules, we recommend that you immediately replace the fan module if even one fan is not working.

Displaying Module Temperature

Expand **Switches** and then select **Hardware** in the Physical Attributes pane in Fabric Manager. Click the **Temperature Sensors** tab in the Information pane to display temperature sensors for each module (see the second example under [Power Supply Configuration Modes](#)).

About Fan Modules

Hot-swappable fan modules (fan trays) are provided in all switches in the Cisco MDS 9000 Family to manage airflow and cooling for the entire switch. Each fan module contains multiple fans to provide redundancy. The switch can continue functioning in the following situations:

- One or more fans fail within a fan module—Even with multiple fan failures, switches in the Cisco MDS 9000 Family can continue functioning. When a fan fails within a module, the functioning fans in the module increase their speed to compensate for the failed fan(s).
- The fan module is removed for replacement—The fan module is designed to be removed and replaced while the system is operating without presenting an electrical hazard or damage to the system. When replacing a failed fan module in a running switch, be sure to replace the new fan module within five minutes.

**Tip**

If one or more fans fail within a fan module, the Fan Status LED turns red. A fan failure could lead to temperature alarms if not corrected immediately.

The fan status is continuously monitored by the Cisco MDS SAN-OS software. In case of a fan failure, the following action is taken:

- System messages are displayed.
- Call Home alerts are sent (if configured).
- SNMP notifications are sent (if configured).

To display the fan module status, from Device Manager, choose **Physical > Fans**. The dialog box displays the fan status.

The possible Status field values for a fan module on the Cisco MDS 9500 Series switches are as follows:

- If the fan module is operating properly, the status is ok.
- If the fan is physically absent, the status is absent.

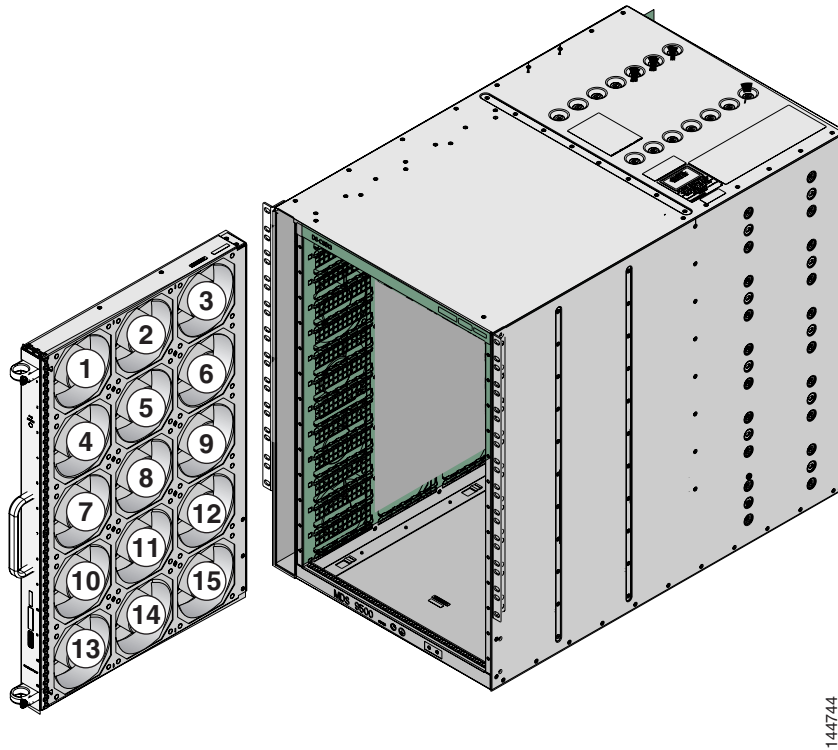
Send documentation comments to mdsfeedback-doc@cisco.com

- If the fan is physically present but not working properly, the status is failure.

On the Cisco MDS 9513 Director, the front fan module has 15 fans. .

Figure 18-6 shows the numbering of the fans in the front fan module on the Cisco MDS 9513 Director.

Figure 18-6 Cisco MDS 9513 Front Fan Module Numbering



The rear fan module (DS-13SLT-FAN-R) on the Cisco MDS 9513 Director has only two fans. .

Default Settings

Table 18-4 lists the default hardware settings.

Table 18-4 Default Hardware Parameters

Parameters	Default
Power supply mode	Redundant mode.