



CHAPTER 5

Fabric Manager Client

Cisco Fabric Manager Client is a java-based GUI application that provides access to the Fabric Manager applications from a remote workstation.

This chapter contains the following sections:

- [About Fabric Manager Client, page 5-1](#)
- [Launching Fabric Manager Client in Cisco SAN-OS Release 3.2\(1\) and Later, page 5-2](#)
- [Fabric Manager Client Quick Tour, page 5-6](#)
- [Setting Fabric Manager Preferences, page 5-18](#)
- [Network Fabric Discovery, page 5-19](#)
- [Modifying the Device Grouping, page 5-20](#)
- [Controlling Administrator Access with Users and Roles, page 5-21](#)
- [Using Fabric Manager Wizards, page 5-21](#)
- [Fabric Manager Troubleshooting Tools, page 5-22](#)

About Fabric Manager Client

Cisco Fabric Manager is a Java and SNMP-based network fabric and device management tool with a GUI that displays real-time views of your network fabric, including Cisco MDS 9000 Family and third-party switches, hosts, and storage devices.

In addition to complete configuration and status monitoring capabilities for Cisco MDS 9000 Family switches, Fabric Manager Client provides Fibre Channel troubleshooting tools. These health and configuration analysis tools use the MDS 9000 switch capabilities including Fibre Channel ping and traceroute.



Note

You must use the same release of Fabric Manager Client and Fabric Manager Server.

Send documentation comments to mdsfeedback-doc@cisco.com

Fabric Manager Advanced Mode

Advanced mode is enabled by default and provides the full suite of Fabric Manager features, including security, IVR, iSCSI, and FICON. Uncheck the **Advanced** check box in the upper right corner of the Fabric Manager Client to simplify the user interface. In this mode, you can access basic MDS 9000 features such as VSANs, zoning, and configuring interfaces.

Launching Fabric Manager Client in Cisco SAN-OS Release 3.2(1) and Later



Note

As of Cisco SAN-OS Release 3.2(1), the Fabric Manager Client login procedure has changed. If you are running a version of Cisco SAN-OS that is earlier than Cisco SAN-OS 3.2(1), follow the login instructions in the “[Setting the Seed Switch in Cisco SAN-OS Releases 3.1\(1\) to 3.2\(1\)](#)” section on page A-1 or the “[Setting the Seed Switch in Releases Prior to Cisco SAN-OS Release 3.1\(1\)](#)” section on page A-3.



Note

Network administrators must initially launch Fabric Manager Client using Fabric Manager Web Server, as described below. Once an administrator has installed the Fabric Manager Client icon on your desktop, you can double click on the icon to launch the Fabric Manager Client.

To launch Fabric Manager Client, follow these steps:

- Step 1** Open your browser and enter the IP address where you installed Fabric Manager Server, or enter localhost if you installed Fabric Manager Server on your local workstation.

You see the Fabric Manager Web Server Login dialog box shown in [Figure 5-1](#).

Figure 5-1 Fabric Manager Web Server Login Dialog Box



Send documentation comments to mdsfeedback-doc@cisco.com

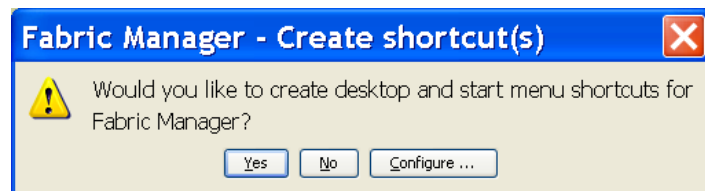
- Step 2** Enter your user name and password and click **Login**.
You see the Fabric Manager Web Server Summary page.
- Step 3** Click the **Download** link in the upper right corner of the page.
You see the Download page for Fabric Manager and Device Manager (see [Figure 5-2](#)).

Figure 5-2 Download Page for Fabric Manager and Device Manager



- Step 4** Click the link for either **Fabric Manager** or **Device Manager**.
If you are launching Fabric Manager Client for the first time, you see a message asking whether you want to create shortcuts for Fabric Manager (see [Figure 5-3](#)).

Figure 5-3 Fabric Manager Create Shortcut(s) Message



- Step 5** Click **Yes** to create shortcuts for Fabric Manager.

Send documentation comments to mdsfeedback-doc@cisco.com

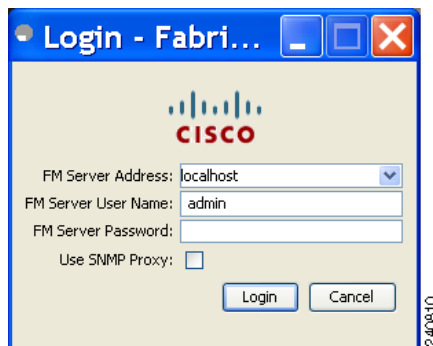


Note This message only appears the first time you launch Fabric Manager Client. If you select No, your selection will be remembered and you will not be prompted to make a selection again. In this case, you will need to launch Fabric Manager Client using the Fabric Manager Web Client

Step 6 When the software is installed and icons are created on your desktop, double-click the Fabric Manager icon to launch Fabric Manager.

You see the Fabric Manager Login dialog box shown in [Figure 5-4](#).

Figure 5-4 Fabric Manager Login Dialog Box



Step 7 Enter the Fabric Manager Server user name and password.

Step 8 Check the **Use SNMP Proxy** check box if you want Fabric Manager Client to communicate with Fabric Manager Server through a TCP-based proxy server.

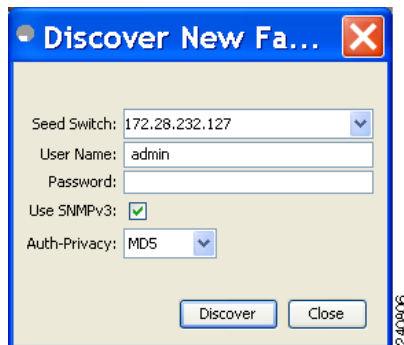
Step 9 Click **Login**. Once you successfully log in to Fabric Manager Server, you can set the seed switch and open the fabrics that you are entitled to access.



Note When you launch Fabric Manager Client for the first time or when there are no available fabrics, you see the Discover New Fabric dialog box.

You see the Discover New Fabric dialog box shown in [Figure 5-5](#).

Figure 5-5 Discover New Fabric Dialog Box



Send documentation comments to mdsfeedback-doc@cisco.com



Note Only network administrators can discover new fabrics.

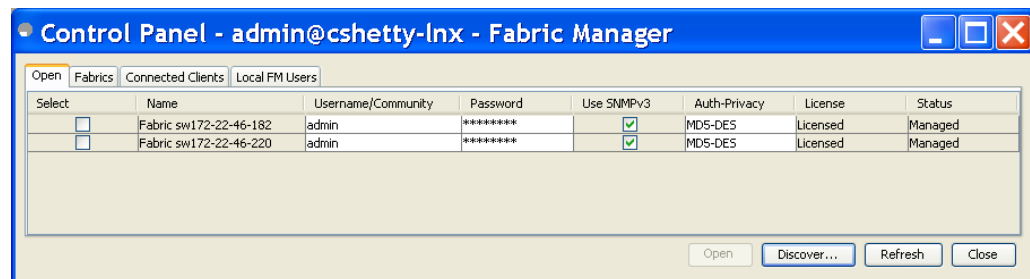
- Step 10** Set the fabric seed switch to the Cisco MDS 9000 Family switch that you want Fabric Manager to use.
- Step 11** Enter the user name and password for the switch.
- Step 12** Choose the Auth-Privacy option according to the privacy protocol you have configured on your switch:
- If you have not configured the switch with a privacy protocol, then choose Auth-Privacy option MD5 (no privacy).
 - If you have configured the switch with your privacy protocol, please choose your Auth-Privacy choice.



Note If you want a clean discovery, remove the fabric and rediscover it.

- Step 13** Click **Discover**.
- You see the Control Panel dialog box shown in [Figure 5-6](#).

Figure 5-6 Control Panel Dialog Box



Note You see a message in the dialog box when the server and client are running on the same workstation and there are unlicensed fabrics in the database. You also see a message when there are unmanaged fabrics (the state of the licenses is unknown).

- Step 14** Check the check box(es) next to the fabric(s) you want to open in the Select column, or click **Discover** to add a new fabric.



Note Only network administrators can continuously manage or unmanage fabrics. For more information, see the [“Selecting a Fabric to Manage Continuously”](#) section on page 3-4.

- Step 15** Click **Open** to open the selected fabric(s).



Note If you have an incomplete view of your fabric, rediscover the fabric with a user that has no VSAN restriction.

Send documentation comments to mdsfeedback-doc@cisco.com

To launch Fabric Manager Client from within a running instance of Fabric Manager, follow these steps:

- Step 1** Choose **File > Open Fabric** or click the **Open Switch Fabric** icon on the Fabric Manager toolbar. You see the Control Panel dialog box (see [Figure 5-6](#)).
- Step 2** Check the check box(es) next to the fabric(s) you want to open in the Select column and click **Open**.

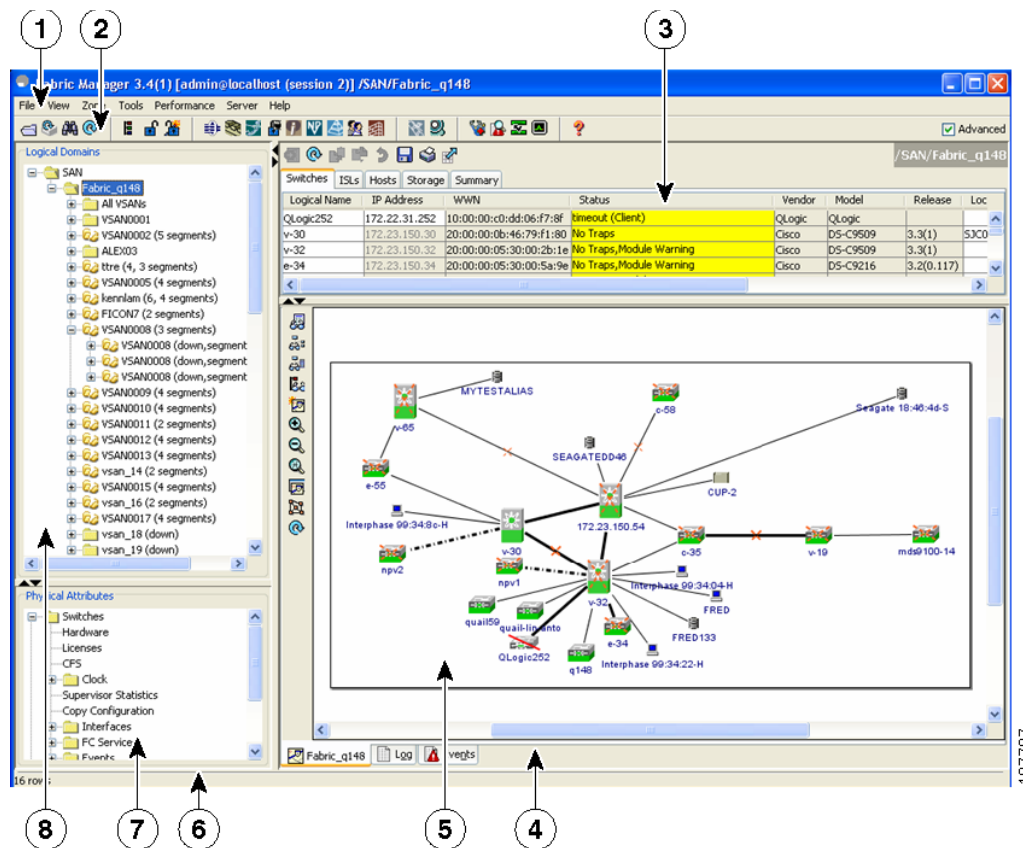


Note Changes made using Fabric Manager are applied to the running configuration of the switches that you are managing. If you have made changes to the configuration or performed an operation (such as activating zones), Fabric Manager prompts you to save your changes before you exit.

Fabric Manager Client Quick Tour

This section describes the Fabric Manager Client interface shown in [Figure 5-7](#).

Figure 5-7 Fabric Manager Main Window



Send documentation comments to mdsfeedback-doc@cisco.com

1	Menu bar—Provides access to options that are organized by menus.
2	Toolbar—Provides icons for direct access to the most commonly used options on the File, Tools, and Help menus.
3	Information pane—Displays information about whatever option is selected in the menu tree.
4	Status Bar (right side)—Shows the last entry displayed by the discovery process and the possible error message.
5	Fabric pane—Displays a map of the network fabric, including switches, hosts, and storage. It also provides tabs for displaying log and event data.
6	Status Bar (left side)—Shows short-term transient messages, such as the number of rows displayed in a table.
7	Physical Attributes pane—Displays a tree of available configuration tasks depending on the fabric, VSAN, or zone selected previously. Lists the switches and end devices in the logical selection.
8	Logical Domains pane—Displays a tree of configured SAN, fabrics, VSANs, and zones, and provides access to user-defined groups. The label next to the segmented VSAN indicates the number of segments.



Note

You can resize each pane by dragging the boundaries between each region or by clicking the **Minimize** or **Maximize** controls.

Menu Bar

The menu bar at the top of the Fabric Manager main window provides options for managing and troubleshooting the current fabric and for controlling the display of information on the Fabric pane. The menu bar provides the following menus:

- **File**—Opens a new fabric, rediscovers the current fabric, locates switches, sets preferences, prints the map, and clears (right-click on log) or exports the Fabric pane log.
- **View**—Changes the appearance of the map (these options are duplicated on the Fabric pane toolbar).
- **Zone**—Manages zones, zone sets, and inter-VSAN routing (IVR).
- **Tools**—Verifies and troubleshoots connectivity and configuration., as described in the [“Fabric Manager Troubleshooting Tools”](#) section on page 5-22.
- **Performance**—Runs and configures Performance Manager and Cisco Traffic Analyzer, and generates reports.
- **Server**—Runs administrative tasks on clients and fabrics. Provides Fabric Manager Server management and a **purge** command. Lists switches being managed.
- **Help**—Displays online help topics for specific dialog boxes in the Information pane.

Send documentation comments to mdsfeedback-doc@cisco.com

Toolbar




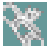






The Fabric Manager main toolbar provides icons for accessing the most commonly used menu bar options as shown in [Table 5-1](#).

Table 5-1 *Fabric Manager Client Main Toolbar*

Icon	Description
	Opens switch fabric.
	Rediscovered current fabric.
	Finds in the map.
	Creates VSAN.
	Launches DPVM wizard.
	Launches Port Security wizard.
	Edits full zone database.
	Launches IVR zone wizard.
	Launches PortChannel wizard.
	Launches FCIP wizard.
	Launches iSCSI wizard.
	Launches NPVM wizard.

Send documentation comments to mdsfeedback-doc@cisco.com

Table 5-1 Fabric Manager Client Main Toolbar (continued)

Icon	Description
	Launches QoS wizard.
	Configures users and roles.
	Launches IP-ACL wizard.
	Launches License Install wizard.
	Launches Software Install wizard.
	Performs switch health analysis.
	Performs fabric configuration analysis.
	Performs end-to-end connectivity analysis.
	Monitors ISL performance. Brings up real-time ISL performance information for all interfaces in the fabric, in the Information pane.
	Shows online help.

Logical Domains Pane

Use the Logical Domains pane to manage attributes for fabrics, VSANs, and zones, and to access user-defined groups. Under the fabric node, VSANs are ordered by a VSAN ID. The segmented VSANs are placed under the fabric node. The label next to the segmented VSAN indicates the number of segments. You can expand a segmented VSAN and the segments under that VSAN. Right-click one of the folders in the tree and click a menu item from the pop-up menu. You see the appropriate configuration dialog box.

The default name for the fabric is the name, IP address, or WWN for the principal switch in VSAN 1. If VSAN 1 is segmented, the default name is chosen from a principal switch with the smallest WWN. The fabric names you see are as follows:

Send documentation comments to mdsfeedback-doc@cisco.com

- Fabric <sysName>
- Fabric <ipAddress>
- Fabric <sWWN>

To change the fabric name using Fabric Manager, follow these steps:

Step 1 Choose **Server > Admin**.

You see the Control Panel dialog box.

Step 2 Double click the fabric name and enter the new name of the fabric.

Step 3 Click **Apply** to change the name.

Filtering

Fabric Manager has a filtering mechanism that displays only the data that you are interested in. To filter, first select the fabric and VSAN from the Logical Domains pane. This action narrows the scope of what is displayed in the Fabric pane. Any information that does not belong to the selected items is dimmed. Also, any information that does not belong to the selected items is not displayed in the tables in the Information pane. As shown in [Figure 5-8](#), the filter that you select is displayed at the top right of the Fabric Manager window.

To further narrow the scope, select attributes from the Physical Attributes pane. The Fabric Manager table, display, and filter criteria change accordingly.

Physical Attributes Pane

Use the Physical Attributes pane to display a tree of the options available for managing the switches in the currently selected fabric, VSAN, or zone.

To select an option, click a folder to display the options available and then click the option. You see the table with information for the selected option in the Information pane. The Physical Attributes pane provides the following main folders:


- Switches—Views and configures hardware, system, licensing, and configuration files.
- Interfaces—Views and configures FC physical, FC logical, Ethernet, SVC, and PortChannel interfaces.
- FC Services—Views and configures Fibre Channel network configurations.
- IP—Views and configures IP storage and IP services.
- Events—Views and configures events, alarms, thresholds, notifications, and informs.
- Security—Views and configures MDS management and FC-SP security.
- ISLs—Views and configures Inter-Switch Links.
- End Devices—Views and configures end devices.

Send documentation comments to mdsfeedback-doc@cisco.com

Information Pane

Use the Information pane to display tables of information associated with the option selected from the menu tree in the Logical Domains or Physical Attributes panes. The Information pane toolbar provides buttons for performing one or more of the operations shown in [Table 5-2](#).

Table 5-2 Information Pane Toolbar

Icon	Description
 Apply Changes	Applies configuration changes.
 Refresh Values	Refreshes table values.
 Create Row	Opens the appropriate dialog box to make a new row in the table.
 Delete Row	Deletes the currently highlighted rows from the table.
 Copy/Ctrl+C	Copies data from one row to another.
 Paste/Ctrl +V	Pastes the data from one row to another.
 Undo Changes/Ctrl-Z	Undoes the most recent change.
 Export	Exports and saves information to a file.
 Print Table	Prints the contents of the Information pane.
 Detach Table	Displays a non-editable copy of the table in the Information pane in its own window, which you can move around the screen.



Note

After making changes, you must save the configuration or the changes will be lost when the device is restarted.

Send documentation comments to mdsfeedback-doc@cisco.com

**Note**

The buttons that appear on the toolbar vary according to the option that you select. They are activated or deactivated (dimmed) according to the field or other object that you select in the Information pane.









Detachable Tables

Detachable tables in Fabric Manager let you detach tables and move them to different areas on your desktop so that you can compare similar tables from different VSANs. You can keep informational tables open from one view while you examine a different area in Fabric Manager. To detach tables, click the **Detach Table** icon in the Information pane in Fabric Manager.

Fabric Pane












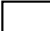
Use the Fabric pane to display the graphical representation of your fabric. [Table 5-3](#) explains the graphics you may see displayed, depending on which devices you have in your fabric.

Table 5-3 **Fabric Manager Graphics**

Icon or Graphic	Description
	Director class MDS 9000.
	Non-director class MDS 9000.
	Generic Fibre Channel switch.
	Cisco SN5428.
	An orange line through a device indicates that the device is manageable but there are operational problems.
	An orange X through a device or link indicates that the device or ISL is not working properly.
	A red line through a device indicates that the device is not manageable.
	A red X through a device or link indicates that the device is down or that the ISL is down.

Send documentation comments to mdsfeedback-doc@cisco.com

Table 5-3 Fabric Manager Graphics (continued)

Icon or Graphic	Description
	Fibre Channel HBA (or enclosure).
	Fibre Channel target (or enclosure).
	iSCSI host.
	Fibre Channel ISL and edge connection.
	Fibre Channel PortChannel.
	IP ISL and edge connection.
	IP PortChannel.
	DWDM connection.
	NPV connection.
	Fibre Channel loop (storage).
	IP cloud (hosts). This icon is also used to represent a fabric when viewing a SAN (multiple fabrics) in the Fabric Manager Fabric pane.
	Any device, cloud, or loop with a box around it means that there are hidden links attached.

If a switch or director is grayed out, Fabric Manager can no longer communicate with it.

The bottom of the Fabric pane has the following tabs:

- Fabric—When displaying multiple fabrics, each fabric has its own tab. You can switch between fabrics by clicking on their respective tabs.
- Log—Displays messages that describe Fabric Manager operations, such as fabric discovery.

Send documentation comments to mdsfeedback-doc@cisco.com

- Events—Displays information about the SNMP traps received by the management station. This includes combination events as detected by discovery and important traps like license, SNMP, and FICON.

When viewing large fabrics in the Fabric pane, it is helpful to do the following tasks:

- Turn off end device labels
- Collapse loops
- Collapse expanded multiple links (collapsed multiple links are shown as very thick single lines)
- Dim or hide portions of your fabric by VSAN



Note

When a VSAN, zone, or zone member is selected in the VSAN tree, the map highlighting changes to identify the selected objects. To remove this highlighting, click the **Clear Highlight** button on the Fabric pane toolbar or choose **Clear Highlight** from the pop-up menu.

Context Menus

When you right-click an icon in the Fabric pane, you see a pop-up menu with options that vary depending on the type of icon selected. The various options available for different objects include the following:

- Open an instance of Device Manager for the selected switch.
- Open a CLI session for the selected switch.
- Copy the display name of the selected object.
- Execute a **ping** or **traceroute** command for the device.
- Show or hide end devices.
- View attributes.
- Quiesce and disable members for PortChannels.
- Set the trunking mode for an ISL.
- Create or add to a PortChannel for selected ISLs.

The Fabric pane has its own toolbar with options for saving, printing, and changing the appearance of the map. When you right-click the map, a pop-up menu appears that provides options (duplicated on the toolbar) for changing the appearance of the map.



Note

You can launch web-based or non-web-based applications from the Fabric pane. To do this, you assign an IP address to the storage port or enclosure. Then right-click to bring up the pop-up menu, and select **Device Manager**.

Saving the Map

You can save the map in the Fabric Pane as an image, or as an editable Visio diagram. You can save the map with or without labels on the links. The created Visio diagram is editable and saved in two layers:

- The default layer includes all switches and links in the fabric.
- The end devices layer includes the end devices and can be turned off to remove end devices from the Visio diagram.

Send documentation comments to mdsfeedback-doc@cisco.com

To save the map as a Visio diagram, select **Files > Export > Visio** and choose **Map** or **Map with link labels**. The saved Visio diagram retains the viewing options that you selected from the Fabric pane. For example, if you collapse multiple links in the map and export the links as a Visio diagram, the Visio diagram shows those multiple links as one solid link.

The Show Tech Support option from the Tools menu also supports saving the map as a Visio diagram.

Purging Down Elements

The Fabric pane allows you to refresh the map at any time by clicking the **Refresh Map** icon. The **Refresh Map** icon redraws the map but does not purge elements that are down. To purge down elements you can:

- Click **Server > Purge Down Elements**. This purges all down elements in the fabric.
- Right-click the **Fabric** pane and select **Purge Down Elements**.
- Right-click a down element and select **Purge**. This action purges only this element from the fabric.

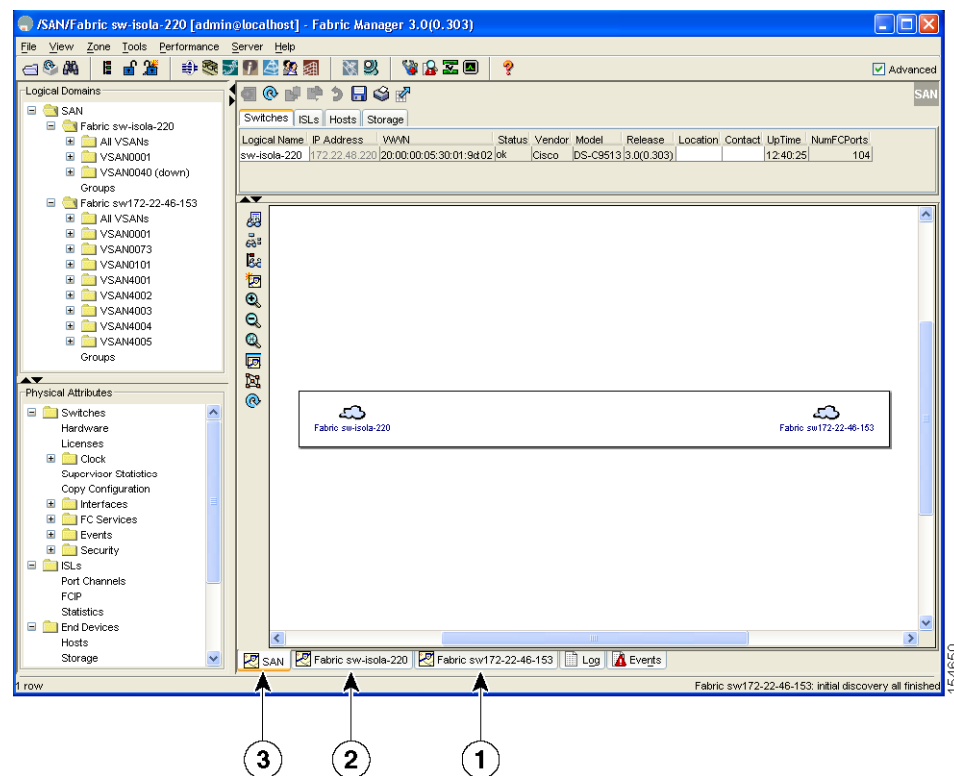


Note If you select an element that is not down and purge it, that element will reappear on the next fabric discovery cycle.

Multiple Fabric Display

Fabric Manager can display multiple fabrics in the same pane (see [Figure 5-8](#)).

Figure 5-8 Fabric Manager's Multiple Fabric Display Window



Send documentation comments to mdsfeedback-doc@cisco.com

1	The Fabric view tab for fabric 172.23.46.152. When selected, the Fabric view displays fabric 172.23.46.152.
2	The Fabric view tab for fabric 172.23.46.153. When selected, the Fabric view displays fabric 172.23.46.153.
3	SAN tab (selected), showing two fabrics.

**Note**

The same user name and password must be used to log into multiple fabrics.

The information for both fabrics is displayed; you do not need to select a seed switch. To see details of a fabric, select the tab for that fabric at the bottom of the Fabric pane, or double-click the **Cloud** icon for the fabric in the SAN tab.

**Note**

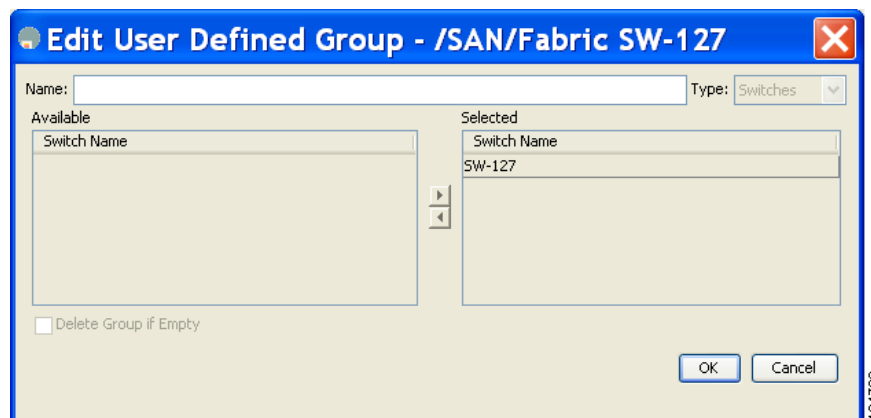
Enclosure names should be unique. If the same enclosure name is used for each port, Fabric Manager shows a host/target enclosure connected to both fabrics. To fix this problem, you can either disable auto-creation or create unique enclosure names.

Filtering by Groups

You can filter the Fabric pane display by creating groups of switches or end ports. To create a group in Fabric Manager, follow these steps:

- Step 1** Right-click a switch or end port in the Fabric pane map and select **Group > Create**. You see the Edit User Defined Group dialog box shown in [Figure 5-9](#).

Figure 5-9 Edit User Defined Group Dialog Box



- Step 2** Enter a group name in the **Name** field.

Send documentation comments to mdsfeedback-doc@cisco.com

- Step 3** Use the arrows to move additional switches or end ports from the Available column to the Selected column.
- Step 4** Click **OK** to save the group.

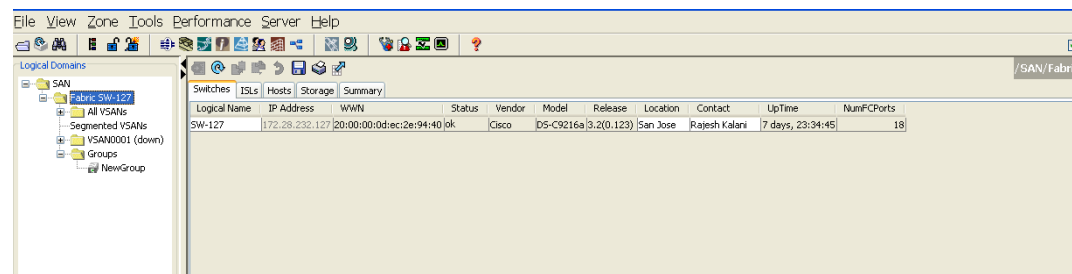
To add a switch or end port to an existing group in Fabric Manager, follow these steps:

- Step 1** Right-click a switch or end device and select **Group > Add To > YourGroupName**.
You see the Edit User Defined Group dialog box (see [Figure 5-9](#)).
- Step 2** Use the arrows to move additional switches or end ports from the Available column to the Selected column.
- Step 3** Click **OK** to save the updated group.

To filter the display by a group you have created, follow these steps:

- Step 1** Expand the **Groups** folder in the Logical Domains pane.
You see the list of groups that you have created as shown in [Figure 5-10](#).

Figure 5-10 Group Highlighted in Fabric Pane Map



- Step 2** Click the name of the group that you want to filter.
In the Fabric pane, the switches or end devices in your group are shown normally; all other switches and end devices are shown in gray.
- Step 3** Click the **Groups** folder in the Logical Domains pane to return the display to normal.



Note User defined groups tables are filtered based on switches in the group except for switches where CFS-controlled features are enabled when all CFS member switches are displayed to avoid misconfigurations.

Send documentation comments to mdsfeedback-doc@cisco.com

Status Bar

The status bar at the bottom of the Fabric Manager window shows the last entry displayed by the discovery process, and the possible error message on the right side. The status bar displays a message stating that something has changed in the fabric and a new discovery is needed. The status bar shows both short-term, transient messages (such as the number of rows displayed in the table) and long-term discovery issues.

Setting Fabric Manager Preferences

To set your preferences for the behavior of the Fabric Manager, choose **File > Preferences** from the Fabric Manager menu bar. You see the Preferences dialog box with the following tabs for setting different components of the application:

- General
- SNMP
- Map

The default General preferences for Fabric Manager are as follows:

- Show Device Name by—Displays the switches in the Fabric pane by IP address, DNS name, or logical name. The default setting for this value is Logical Name.
- Show WorldWideName (WWN) Vendor—Displays the world wide name vendor name in any table or listing displayed by Fabric Manager. Check the **Prepend Name** check box to display the name in front of the IP address of the switch. Check the **Replacing Vendor Bytes** check box to display the name instead of the IP address. The default is the Prepend Name option.
- Show End Device Using—Displays end devices in the Fabric pane using alias or pWWN alias. The default setting for this value is Alias.
- Show Shortened iSCSI Names—Displays the default setting for this value is OFF.
- Show Timestamps as Date/Time—Displays timestamps in the date/time format. If this preference is not checked, timestamps are displayed as elapsed time. The default setting is enabled (checked).
- Telnet Path—Displays the path for the telnet.exe file on your system. The default is telnet.exe, but you need to browse for the correct location.



Note If you browse for a path or enter a path and you have a space in the pathname (for example, c:\program files\telnet.exe), then the path will not work. To get the path to work, you must manually place quotes around it (for example, "c:\program files\telnet.exe").

- Use Secure Shell instead of Telnet—Specifies whether to use SSH or Telnet when using the CLI to communicate with the switch. If enabled, you must specify the path to your SSH application. The default setting is disabled.
- Confirm Deletion—Displays a confirmation pop-up window when you delete part of your configuration using Fabric Manager. The default setting is enabled (checked).
- Export Tables with Format—Specifies the type of file that is created when you export a table using Device Manager. The options are tab-delimited or XML. The default setting is Tab-Delimited.
- Show CFS Warnings—Shows warning messages if CFS is not enabled on all switches for a selected feature.

Send documentation comments to mdsfeedback-doc@cisco.com

The default SNMP preferences for Fabric Manager are as follows:

- Retry request 1 time(s) after 5 sec timeout—You can set the retry value to 0-5, and the timeout value to 3-30.
- Trace SNMP packets in Log—The default setting for this value is OFF.
- Enable Audible Alert when Event Received—The default setting for this value is OFF.

The default Map preferences for Fabric Manager are as follows:

- Display Unselected VSAN Members—Displays the unselected VSAN members in the Fabric pane. The default setting for this value is ON.
- Display End Devices—Displays the fabric's end devices in the Fabric pane. The default setting for this value is ON.
- Display End Device Labels—Displays the fabric's end device labels in the Fabric pane. The default setting for this value is ON.
- Expand Loops—Displays the loops in the fabric as individual connections in the Fabric pane. The default setting for this value is OFF.
- Expand Multiple Links—Displays multiple links in the Fabric pane as separate lines instead of one thick line. The default setting for this value is ON.
- Open New Device Manager Each Time—Opens a new instance of Device Manager each time that you invoke it from a switch in your fabric. The default value is OFF, which means that only one instance of Device Manager is open at a time.
- Select Switch or Link from Table—Allows you to select a switch or link in the Fabric pane by clicking the switch or link in a table in the Information pane. The default setting for this value is disabled (unchecked), which means clicking a switch or link in the table does not change the switch or link selection in the Fabric pane.
- Layout New Devices Automatically—Automatically places new devices in the Fabric pane in an optimal configuration. The default setting for this value is OFF. In this mode, when you add a new device, you must manually reposition it if the initial position does not suit your needs.
- Use Quick Layout when Switch has 30 or more End Devices—Displays the default setting for this value (30). You can enter any number in this field. Enter **0** to disable Quick Layout.
- Override Preferences for Non-default Layout—Displays the default setting for this value (ON).
- Automatically Save Layout—If this option is enabled, any changes in the layout are automatically saved. The default setting for this value is ON.
- Detach Overview Window—Allows you to easily center the Fabric pane on the area of the fabric that you want to see. (This feature is useful for large fabrics that cannot be displayed entirely within the Fabric pane.) Bring up the overview window by clicking the **Show/Hide Overview Window** button. It overlays the fabric window and remains there until you click the **Show/Hide Overview Window** button again. If you enable this preference, you can detach the overview window and move it to one side while you access the Fabric pane. The default setting for this value is disabled (unchecked).

Network Fabric Discovery

Cisco Fabric Manager collects information about the fabric topology through SNMP queries to the switches that are connected to Fabric Manager. The switch replies after having discovered all devices connected to the fabric by using the information from its FSPF technology database and the Name Server

Send documentation comments to mdsfeedback-doc@cisco.com

database and collected using the Fabric Configuration Server's request/response mechanisms that are defined by the FC-GS-3/4 standard. When you start Fabric Manager, you enter the IP address (or host name) of a seed switch for discovery.

After you start Fabric Manager and the discovery completes, Fabric Manager presents you with a view of your network fabric, including all discovered switches, hosts, and storage devices.

Modifying the Device Grouping

Because not all devices are capable of responding to FC-GS-3 requests, different ports of a single server or storage subsystem may be displayed as individual end devices on the Fabric Manager map.

To group end devices in a single enclosure to have them represented by a single icon on the map, Fabric Manager, follow these steps:

-
- Step 1** Expand **End Devices** and then select **Storage** or **Hosts** in the Physical Attributes pane.
You see the end devices displayed in the Information pane.
 - Step 2** Click one of the devices in the Fabric pane, or click the **Enclosures** tab of the Information pane, then click the device name (in the Name field) you want to include in the enclosure.
 - Step 3** Enter a name to identify the new enclosure in the Fabric pane map.
 - Step 4** Click once on the device name in the Name field. To select more than one name, press the **Shift** key and click each of the other names.
 - Step 5** Press **Ctrl-C** to copy the selected name(s).
 - Step 6** Press **Ctrl-V** to paste the device name into the Name field.



Note To remove devices from an enclosure, triple click the device name and press **Delete**. To remove an enclosure, repeat this step for each device in the enclosure.

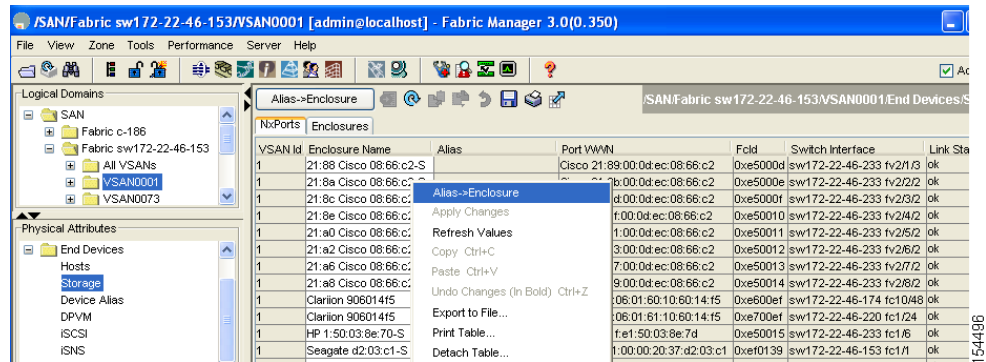
Using Alias Names as Enclosures

To create an enclosure that uses the alias name as the name of the enclosure using Fabric Manager, follow these steps:

-
- Step 1** Expand End Devices and select **Hosts** or **Storage** from the Physical Attributes pane.
You see the list of devices in the Information pane. The NxPorts tab is the default.
 - Step 2** Right-click the enclosure names that you want to convert to alias names and select **Alias > Enclosure** as shown in [Figure 5-11](#).

Send documentation comments to mdsfeedback-doc@cisco.com

Figure 5-11 Alias Enclosure



Step 3 Click the **Apply Changes** icon to save these changes.

Controlling Administrator Access with Users and Roles

Cisco MDS 9000 Family switches support role-based management access whether using the CLI or Cisco Fabric Manager. This lets you assign specific management privileges to particular roles and then assign one or more users to each role.

The default-role contains the access permissions needed by a user to access the GUI (Fabric Manager and Device Manager). These access permissions are automatically granted to all users in order for them to use the GUI.

Cisco Fabric Manager uses SNMPv3 to establish role-based management access. After completing the setup routine, a single role, user name, and password are established. The role assigned to this user allows the highest level of privileges, which includes creating users and roles. Use the Cisco Fabric Manager to create roles and users and to assign passwords as required for secure management access in your network.

Using Fabric Manager Wizards

Fabric Manager Client provides the following wizards to facilitate common configuration tasks:

- **VSAN**—Creates VSANs on multiple switches in the fabric and sets VSAN attributes including interop mode, load balancing, and FICON.
- **Zone Edit Tool**—Creates zone sets, zones, and aliases. Adds members to zones and edits the zone database.
- **IVR Zone**—Creates IVR zone sets, zones, and aliases. Enables IVR NAT and auto-topology. Adds members to IVR zones, and edits the IVR zone database.
- **PortChannel**—Creates PortChannels from selected ISLs either manually or automatically. Sets PortChannel attributes such as channel ID and trunking mode.
- **FCIP**—Creates FCIP links between Gigabit Ethernet ports. Enables Fibre Channel write acceleration and IP compression.

Send documentation comments to mdsfeedback-doc@cisco.com

- DPVM—Establishes dynamic port VSAN membership, enables autolearning, and activates the DPVM database.
- Port Security—Prevents unauthorized access to Cisco MDS switches and reports these intrusions to the administrator.
- iSCSI—Creates zones for iSCSI initiators and adds a VSAN to a target-allowed VSAN list.
- NPV—Reduces the number of Fibre Channel domain IDs in SANs.
- QoS—Sets QoS attributes for zones in the selected VSAN.
- IP ACL—Creates ordered IP access control lists and distributes to selected switches in the fabric.
- License Install—Facilitates download and installation of licenses in selected switches in the fabric.
- Software Install—Verifies image compatibility and installs software images on selected switches in the fabric.

Fabric Manager Troubleshooting Tools

Fabric Manager has several troubleshooting tools available from the toolbar or Tools menu. Procedures for using these tools are described in [Chapter 68, “Troubleshooting Your Fabric.”](#) This section provides a brief description of each tool:

- Zone Merge Analysis—The zone merge analysis tool (available from the Zone menu) enables you to determine if zones will merge successfully when two Cisco MDS switches are interconnected. If the interconnected switch ports allow VSANs with identical names or contain zones with identical names, then Fabric Manager verifies that the zones contain identical members. The merge analysis tool can be run before attempting a merge or after fabrics are interconnected to determine zone merge failure causes.
- End-to-End Connectivity—Fabric Manager’s end-to-end connectivity analysis tool uses FC Ping to verify interconnections between Cisco MDS switches and end-device (HBAs and storage devices) in a particular VSAN. In addition to basic connectivity, Fabric Manager can optionally verify the following:
 - Paths are redundant.
 - Zones contain at least two members.

End devices are connected to a manageable switch (have a currently active in-band or out-of-band management path.)

- Switch Health Analysis—You can run an in-depth switch health analysis with Fabric Manager. It verifies the status of all critical Cisco MDS switches, modules, ports, and Fibre Channel services. Over 40 conditions are checked. This tool provides a very fast, simple, and thorough way to assess Cisco MDS switch health.
- Fabric Configuration Analysis—Fabric Manager includes a fabric configuration analysis tool. It compares the configurations of all Cisco MDS switches in a fabric to a reference switch or a policy file. You can define what functions to check and what type of checks to perform. The analysis can look for mismatched values, and missing or extra values. If all configuration checking is performed for all functions, over 200 checks are performed for each Cisco MDS switch.

After the analysis is run, the results are displayed with details about the issues that were discovered. You can automatically resolve configuration differences by selecting them and clicking the **Resolve** button. Fabric Manager automatically changes the configuration to match the reference switch or policy file.