



CHAPTER 27

Discovering SCSI Targets

This chapter describes the SCSI LUN discovery feature provided in switches in the Cisco MDS 9000 Family. It includes the following sections:

- [About SCSI LUN Discovery, page 27-1](#)
- [Displaying SCSI LUN Information, page 27-3](#)

About SCSI LUN Discovery

Small Computer System Interface (SCSI) targets include disks, tapes, and other storage devices. These targets do not register logical unit numbers (LUNs) with the name server.

The name server requires LUN information for the following reasons:

- To display LUN storage device information so an NMS can access this information.
- To report device capacity, serial number, and device ID information.
- To register the initiator and target features with the name server.

The SCSI LUN discovery feature uses the local domain controller Fibre Channel address. It uses the local domain controller as the source FC ID, and performs SCSI INQUIRY, REPORT LUNS, and READ CAPACITY commands on SCSI devices.

The SCSI LUN discovery feature is initiated on demand, through CLI or SNMP. This information is also synchronized with neighboring switches, if those switches belong to the Cisco MDS 9000 Family.

This section includes the following topics:

- [About Starting SCSI LUN Discovery, page 27-1](#)
- [Starting SCSI LUN Discovery, page 27-2](#)
- [About Initiating Customized Discovery, page 27-2](#)
- [Initiating Customized Discovery, page 27-2](#)

About Starting SCSI LUN Discovery

SCSI LUN discovery is done on demand.

Only Nx ports that are present in the name server database and that are registered as FC4 Type = SCSI_FCP are discovered.

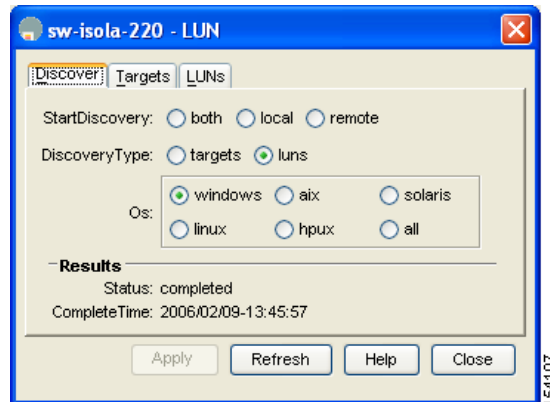
[Send documentation comments to mdsfeedback-doc@cisco.com](mailto:mdsfeedback-doc@cisco.com)

Starting SCSI LUN Discovery

To begin SCSI LUN discovery using Device Manager, follow these steps:

- Step 1** Choose **FC > Advanced > LUNs**.
You see the LUN Configuration dialog box.

Figure 27-1 LUN Configuration Dialog Box



- Step 2** Set **StartDiscovery** to **local**, **remote** or **both**.
Step 3 Choose the **DiscoveryType** and **OS**.
Step 4 Click **Apply** to begin discovery.

About Initiating Customized Discovery

Customized discovery consists of a list of VSAN and domain pairs that are selectively configured to initiate a discovery. The domain ID is a number from 0 to 255 in decimal or a number from 0x0 to 0xFF in hex.

Initiating Customized Discovery

To initiate a customized discovery using Device Manager, follow these steps:

- Step 1** Click the VSAN drop-down menu and select the VSAN in which you want to initiate a customized discovery.
Step 2 Click **FC > Advanced > LUNs**.
You see the LUN Configuration dialog box.
Step 3 Set **StartDiscovery** to **local**, **remote** or **both**.
Step 4 Fill in the **DiscoveryType** and **OS** fields.

Send documentation comments to mdsfeedback-doc@cisco.com

Step 5 Click **Apply** to begin discovery.

Displaying SCSI LUN Information

To display the results of the discovery using Device Manager, follow these steps:

-
- Step 1** Click **FC > Advanced > LUNs**
You see the LUN Configuration dialog box.
- Step 2** Click the **LUN** tab or the **Targets** tab.
-

Send documentation comments to mdsfeedback-doc@cisco.com