



CHAPTER 50

Configuring NASB

Intelligent Storage Services are features supported on the Storage Services Module (SSM). Intelligent Storage Services include Network-Accelerated Serverless Backup (NASB).

For licensing details, see [Chapter 10, “Obtaining and Installing Licenses.”](#)

This chapter includes the following sections:

- [Intelligent Storage Services, page 50-1](#)
- [About NASB, page 50-3](#)
- [Configuring NASB, page 50-5](#)
- [Default Settings, page 50-6](#)

Intelligent Storage Services

All Intelligent Storage Services must be enabled on an SSM before the service can be configured. Services can be enabled for all ports on the SSM, or provisioned in groups of four ports. Switches running earlier releases that support intelligent storage services enable a service across all ports.



Note

The four port groups are contiguous, requiring you to configure ports 1 through 4, 5 through 8, and so on.

This section contains the following topics:

- [Enabling Intelligent Storage Services, page 50-2](#)
- [Disabling Intelligent Storage Services, page 50-3](#)

Send documentation comments to mdsfeedback-doc@cisco.com

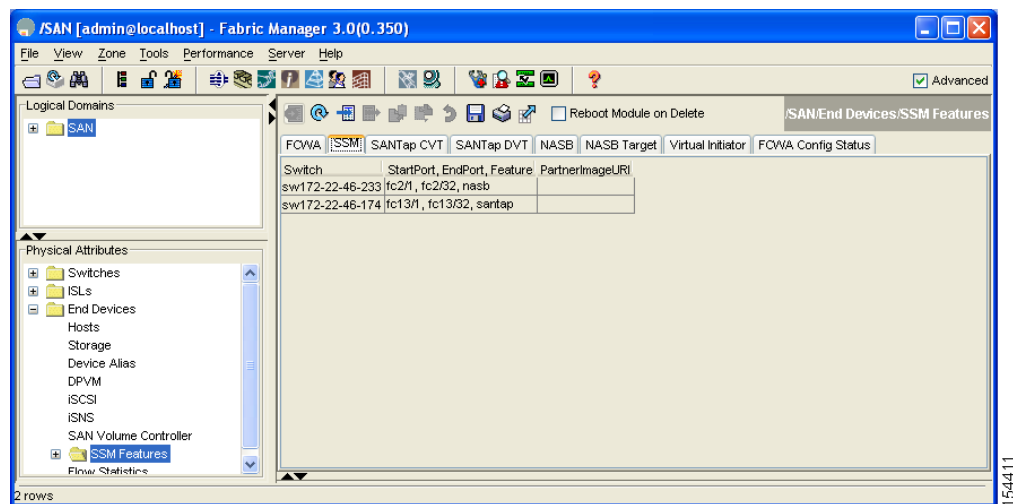
Enabling Intelligent Storage Services

In Cisco MDS SAN-OS Release 2.1(1a) or later, you can provision a subset of the ports for an SSM feature. The port range must be a multiple of four (for example fc4/1 through fc4-12).

To enable Intelligent Storage Services for an SSM and provision all ports or a group of ports to use these services using Fabric Manager, follow these steps:

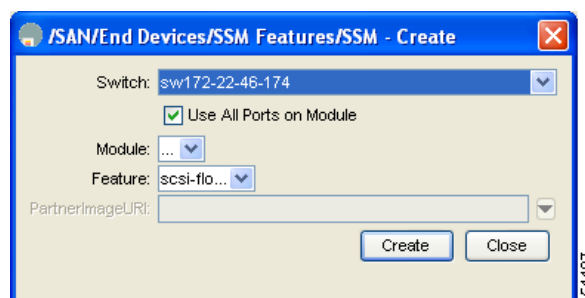
- Step 1** Expand **Switches**, expand **End Devices** and then select **SSM Features** in the Physical Attributes pane. You see the Intelligent Storage Services configuration in the Information pane.
- Step 2** Click the **SSM** tab. You see the set of configured services in the Information pane (See [Figure 50-1](#)).

Figure 50-1 SSM Configured Services



- Step 3** Click **Create Row** to enable a new service on an SSM. You see the Create SSM dialog box shown in [Figure 50-2](#).

Figure 50-2 Create SSM Dialog Box



- Step 4** Select the Switch and SSM Card you want to configure.
- Step 5** Uncheck the **Use All Ports on Card** check box if you want to provision a subset of the ports on the card to use this service.

Send documentation comments to mdsfeedback-doc@cisco.com

Step 6 Select the port range you want to provision for using this service (starting port and ending port).



Note The port range must be a multiple of four (for example fc4/1 through fc4-12).

Step 7 Select the Feature you want to enable on these ports from the drop-down list of services.

Step 8 Set the PartnerImageURI field if you are enabling a third-party application that requires an image loaded onto the SSM.

Step 9 Click **Create** to create this row and enable service.

Disabling Intelligent Storage Services

To disable Intelligent Storage Services in Fabric Manager for an SSM and free up a group of ports that used these services, follow these steps:

Step 1 Expand **Switches**, expand **End Devices** and then select **SSM Features** in the Physical Attributes pane. You see the Intelligent Storage Services configuration in the Information pane.

Step 2 Click the **SSM** tab.

You see the set of configured services in the Information pane (see [Figure 50-1](#)).

Step 3 Select the configured service in the table that you want to disable.

Step 4 Check the **Reboot Module on Delete** check box if you want to force the card to reboot after disabling the service. This is equivalent to the CLI force option.

Step 5 Click **Delete Row**. The ports that were provisioned for this service become available for provisioning in another service.



Note If the **Reboot Card on Delete** checkbox was checked, then the SSM module reboots.

About NASB

Data movement in the fabric uses considerable processor cycles, which can cause client applications to slow down noticeably. Offloading data movement operations to a media server allows the client applications to run normally even during a backup operation. Media servers can further offload the data movement operation to NASB devices, which allows the media server to focus on the coordination functions needed to complete the backup.

Most backups performed today are server-free. In server-free backups, the application server is not involved in moving the data. The data can be moved by either a media server or a NASB device.

When the media server is the data mover, it moves the data between the disks and the tapes. The backup application runs on both the client device and the media server. However, the backup application in the client device performs minimal tasks for the backup operation.

The media server performs the following backup operations:

Send documentation comments to mdsfeedback-doc@cisco.com

- Manages disks as well as one or more tape backup devices.
- Contacts the client devices to retrieve the list of logical blocks that need to be backed up.
- Performs data movement from disk to tape media based on the logical block list provided by the client device.

The backup application in the client device maps the data to be backed up and creates the logical block list associated with the data. The movement of data from the physical disks to the backup device (tape) is not performed by the client device. This reduces substantial load on the client device.

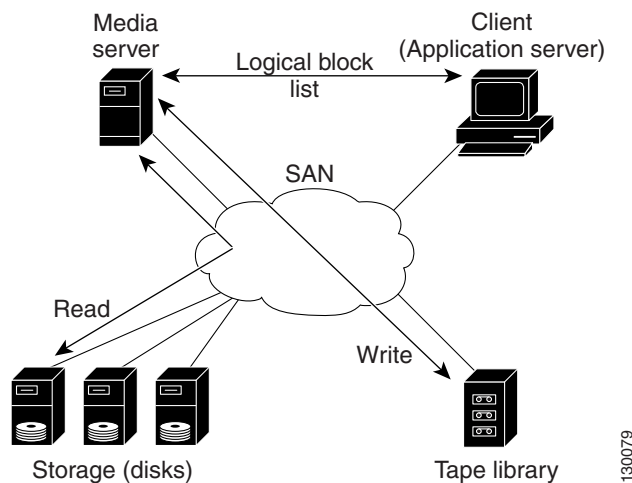


Note

The media server, disk, and tape can be located anywhere in the fabric.

An example configuration is shown in [Figure 50-3](#). The media server moves the data directly between the storage disks and the tape devices during backups.

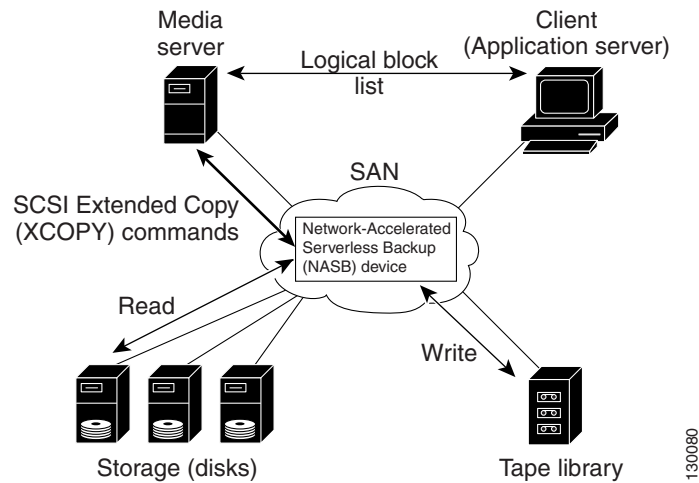
Figure 50-3 Example Configuration with Media Server as Data Mover



When the NASB is the data mover, it moves the data between the disks and the tapes. The NASB device is a SCSI target device capable of handling SCSI Extended Copy (XCOPY) commands as well as a SCSI initiator device capable of issuing READ/WRITE commands to disks and other backup media, such as tapes. See [Figure 50-4](#).

Send documentation comments to mdsfeedback-doc@cisco.com

Figure 50-4 Example Configuration with NASB Device as Data Mover



The task of managing and preparing the source and destination targets is performed by the media server. For example, if the destination is a tape library, the media server issues commands to load and unload the correct tape and position of the tape write head at the correct offset within the tape.

Configuring NASB

Network-Accelerated Serverless Backup (NASB) can be enabled on an entire SSM or it can be enabled on one or more groups of four ports on an SSM. Enabling NASB on interfaces has the following restrictions:

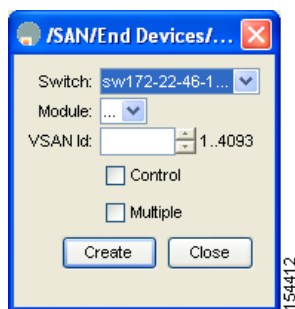
- The fewest number of interfaces that you can enable is four. You can specify fc1 through fc4 but not fc1 through fc2.
- The first interface in the group must be 1, 5, 9, 13, 17, 21, 25, or 29. You can specify fc5 through fc8 but not fc7 through fc10.
- The groups of four interfaces do not need to be consecutive. You can specify fc1 through fc8 and fc17 through fc20.

To configure NASB using Fabric Manager, follow these steps:

- Step 1** Expand **Switches**, expand **End Devices** and then select **SSM Features** in the Physical Attributes pane. You see the Intelligent Storage Services configuration in the Information pane.
- Step 2** Click the **NASB** tab. You see the NASB configuration in the Information pane.
- Step 3** Click **Create Row**. You see the NASB configuration dialog box shown in [Figure 50-5](#).

Send documentation comments to mdsfeedback-doc@cisco.com

Figure 50-5 NASB Configuration Dialog Box



Step 4 Select the Switch and Module on which you want to configure NASB.



Note NASB must be enabled and provisioned as a service on this SSM module. See the [“Enabling Intelligent Storage Services”](#) section on page 50-2.

Step 5 Select the VSAN ID you want to configure for NASB.



Note You must configure this VSAN to permit default zoning.

Step 6 Choose the **Control** option to enable NASB on the SSM in one slot and on one VSAN for a single target LUN that is a Storage Array Controller (Peripheral Device Type = 0x0C).

Step 7 Choose the **Multiple** option to enable NASB on the SSM in one slot and on one VSAN for up to 10 target LUNs that are Direct Access Devices (Peripheral Device Type = 0x00).



Note Use the multiple option for multi-streaming (multiple backup sessions) on a single virtual target for VERITAS NetBackup.



Note For information on specific settings, consult with your NASB partner.

Step 8 Click **Create** to create this NASB.



Note You cannot simultaneously configure the intelligent services SANTap and NASB on a single SSM.

Default Settings

[Table 50-1](#) lists the default settings for NASB parameters.

Send documentation comments to mdsfeedback-doc@cisco.com

Table 50-1 **Default NASB Parameters**

Parameters	Default
NASB feature	Disabled.

Send documentation comments to mdsfeedback-doc@cisco.com