



## APPENDIX **B**

### Quick Config Wizard

---

As of Cisco SAN-OS Release 3.1(1) and later, you can use the Quick Config Wizard on the Cisco MDS 9124 Switch to add or remove zone members per VSAN. You can use the Quick Config Wizard to perform interface-based zoning and to assign zone members for multiple VSANs using Device Manager.



**Note**

---

The Quick Config Wizard is supported on the Cisco MDS 9124 Switch only.

---



**Caution**

---

The Quick Config Wizard can only be used on stand-alone switches that do not have any existing zoning defined on the switch.

---

### Adding or Removing Zone Ports

To add or remove ports from a zone and to zone only the devices within a specific VSAN using Device Manager on the Cisco MDS 9124 Switch, follow these steps:

- Step 1** Select **Quick Config** from the FC menu or click the **Zone** icon in the toolbar. You see the Quick Config Wizard (see [Figure B-2](#)) with all controls disabled and the Discrepancies dialog box (see [Figure B-1](#)), which shows all unsupported configurations.



**Note**

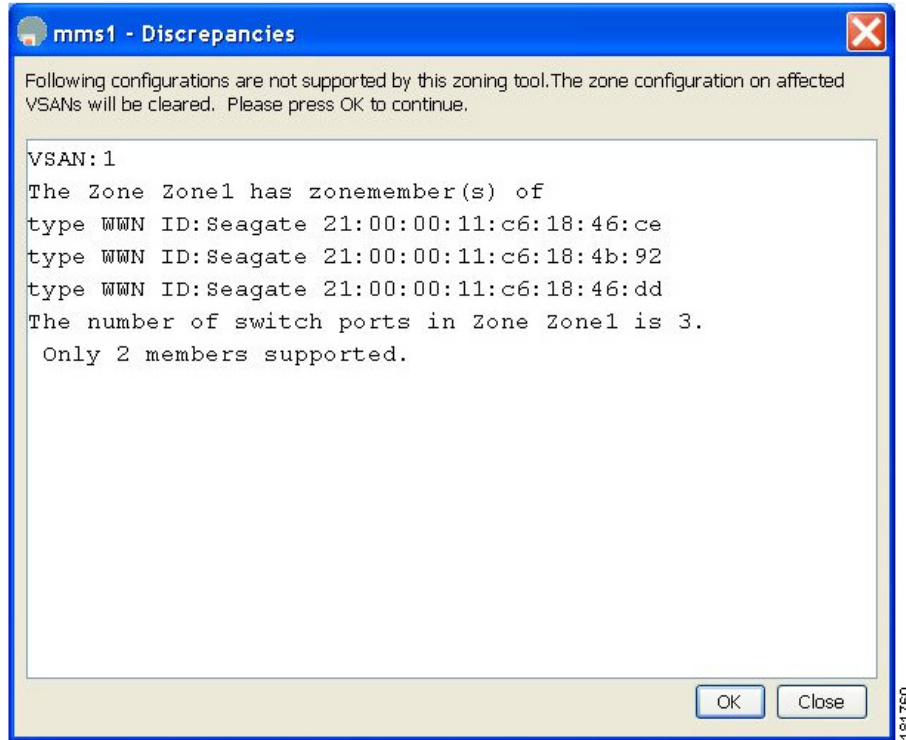
---

You will see the Discrepancies dialog box only if there are any discrepancies.

---

**Send documentation comments to [mdsfeedback-doc@cisco.com](mailto:mdsfeedback-doc@cisco.com)**

**Figure B-1 Discrepancies Dialog Box**



**Step 2** Click **OK** to continue or click **Close** to close the dialog box.

You see the Quick Config Wizard dialog box shown in [Figure B-2](#).

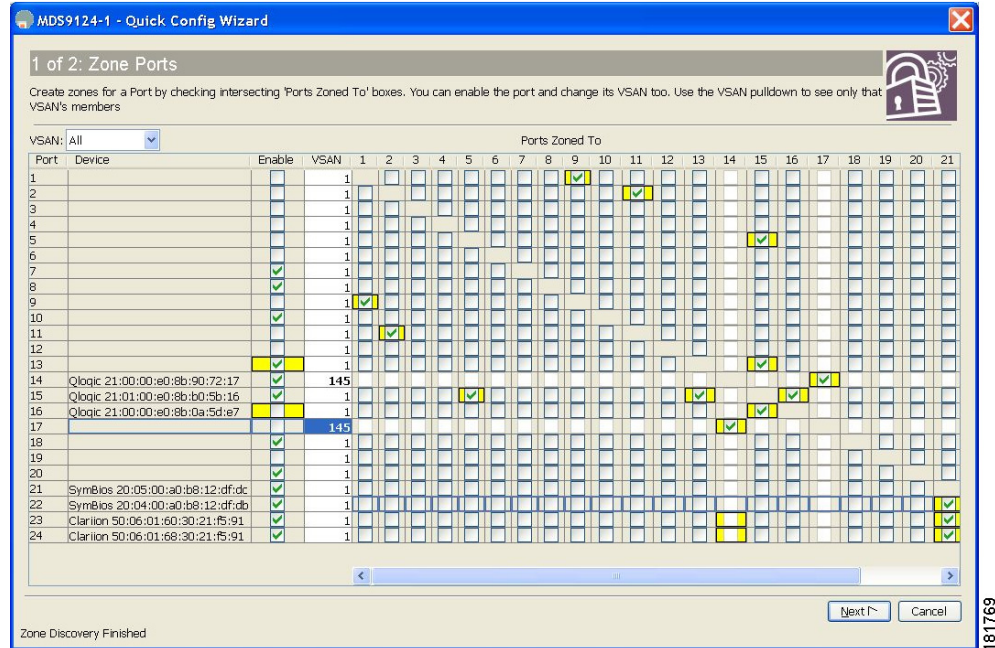


**Caution**

If there are discrepancies and you click OK, the affected VSANs in the zone databases are cleared. This may become disruptive if the switch is in use.

**Send documentation comments to [mdsfeedback-doc@cisco.com](mailto:mdsfeedback-doc@cisco.com)**

**Figure B-2 Quick Config Wizard**



**Step 3** Click a check box in the Ports Zoned To column for the port you want to add or remove from a zone. The check box for the matching port is similarly set. The selected port pair is added or removed from the zone, creating a two-device zone.

The VSAN pull-down menu provides a filter that enables you to zone only those devices within a selected VSAN.

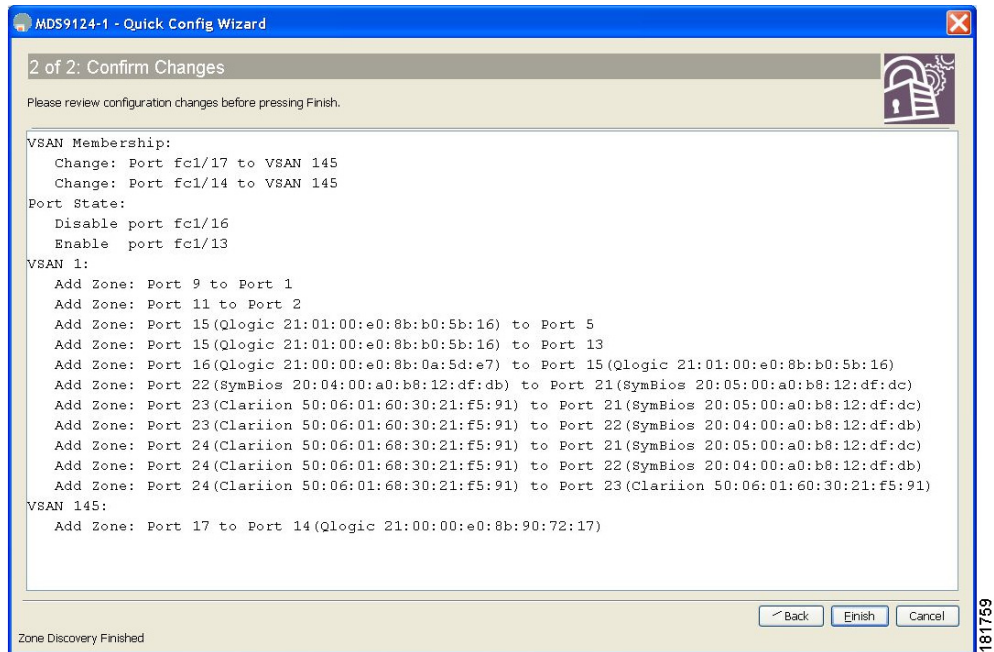
**Step 4** Right-click any of the column names to show or hide a column.

**Step 5** Click **Next** to verify the changes or click **Cancel** to close the dialog box.

You see the Confirm Changes dialog box shown in [Figure B-3](#).

**Send documentation comments to [mdsfeedback-doc@cisco.com](mailto:mdsfeedback-doc@cisco.com)**

**Figure B-3 Confirm Changes Dialog Box**



- Step 6** Optionally, right-click in the dialog box and click **CLI Commands** from the pop-up list to see the CLI commands for the zone members you added or removed.
- Step 7** Click **Finish** to save the configuration changes or click **Cancel** to close the dialog box without saving the changes.