

Viewers and Options

This chapter describes the viewer applets and options dialog that the WSA Explorer Client provides:

- Audit Log Viewer on page 6-1
- Event Log Viewer on page 6-7
- Options on page 6-17
- Template Viewer on page 6-22

Audit Log Viewer

The following sections give detailed information about the **Audit Log Viewer**:

- Audit Log Viewer—Description on page 6-1
- Audit Log Viewer—Invoking on page 6-2
- Audit Log Viewer—Filters on page 6-4
- Audit Log Viewer—Setting Action on page 6-5
- Audit Log Viewer—Approving Actions on page 6-6

Audit Log Viewer—Description

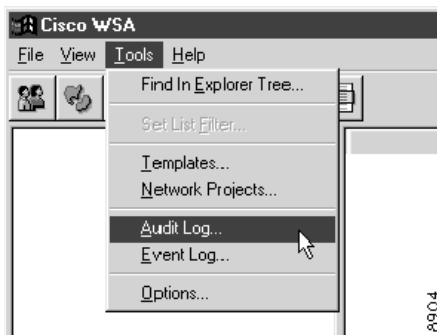
All actions performed by the WSA Audit Processor are logged for each run that it performs.

The Audit Log Viewer allows users to browse this log and manually intervene to correct discrepancies between the physical and database view of the networks being audited.

Audit Log Viewer—Invoking

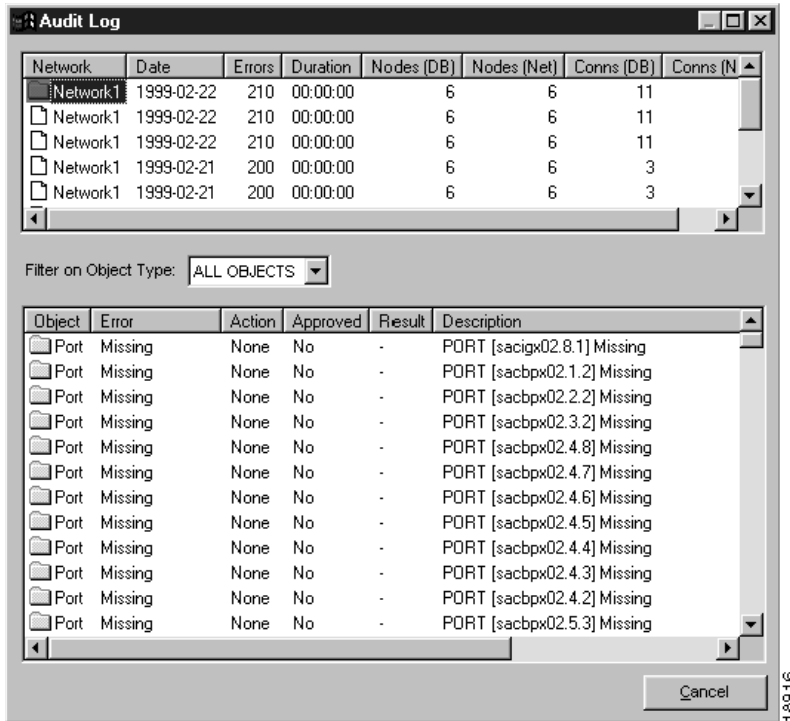
To invoke the WSA Audit Log Viewer, select **Tools->Audit Log...** from the WSA Explorer Client menu bar, as shown in Figure 6-1, “Audit Log Viewer Invocation”.

Figure 6-1 **Audit Log Viewer Invocation**



A new Audit Log Viewer appears. Choose an audit run from the top list and the lower list fills with the results of that audit run, as shown in Figure 6-2, “Audit Log Viewer”.

Figure 6-2 Audit Log Viewer



Only the most recent audit run and results, which are denoted by the folder symbol, can be used to modify the database, as described in the section Audit Log Viewer—Setting Action on page 6-5 and the section Audit Log Viewer—Approving Actions on page 6-6.

Note The Audit Log viewer is a non-modal dialog. It is possible to have more than one viewer open at the same time, each one filtering for different Audit types and/or classes.

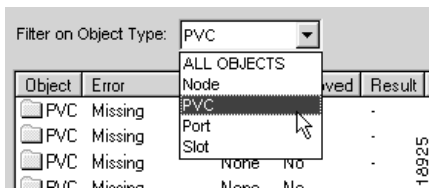


Caution When an Audit Log Viewer is open, closing all WSA Explorer windows does NOT exit the application. This is deliberate, because the user may want to only have an Audit Viewer window running. However, care should be taken to close this viewer when it is no longer required.

Audit Log Viewer—Filters

The Audit Log can be filtered by the object type by selecting an item from the drop down list boxes, as shown in Figure 6-3, “Selecting an Object Type Filter”.

Figure 6-3 Selecting an Object Type Filter

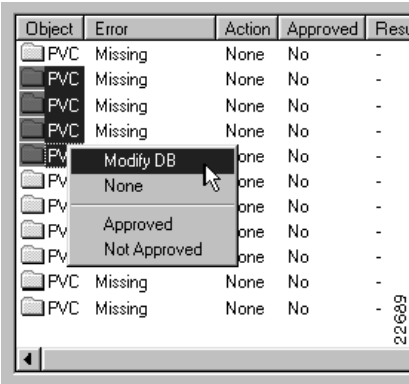


Audit Log Viewer—Setting Action

Audit result entries can be tagged so that the WSA Control system modifies the WSA database to match what exists in the physical network.

To tag one or more entries for modification, select the entries to be modified and activate **Modify DB** from the item menu, as shown in Figure 6-4, “Setting the Modify Tag”.

Figure 6-4 **Setting the Modify Tag**



Audit Log Viewer—Approving Actions

When audit result entries have been tagged to be modified, the modification must be authorized before the WSA Control System performs the modification.

To authorize one or more entries tagged for modification, select the entries to be authorized and activate **Approved** on the item menu, as shown in Figure 6-5, “Approving Modifications”.

Figure 6-5 Approving Modifications

Object	Error	Action	Approved	Rest
PVC	Missing	None	No	-
PVC	Missing	Modify DB	No	-
PVC	Missing	Modify DB	No	-
PVC	Missing	Modify DB	No	-
PVC	Missing	Modify DB	No	-
PVC	Missing	Modify DB	No	-
PVC	Missing	None	No	-
PVC	Missing	None	No	-
PVC	Missing	None	No	-
PVC	Missing	None	No	-
PVC	Missing	None	No	-
PVC	Missing	None	No	-

22690

Event Log Viewer

The following sections give detailed information about the **Event Log Viewer**:

- Event Log Viewer—Description on page 6-7
- Event Log Viewer—Invoking on page 6-8
- Event Log Viewer—Filters on page 6-10
- Event Log Viewer—Date Ranges on page 6-11
- Event Log Viewer—Refreshing the List on page 6-13
- Event Log Viewer—Most Recent Events on page 6-14
- Event Log Viewer—Purging the Event Log on page 6-15

Event Log Viewer—Description

All actions performed by users of the WSA Client Applications and by the WSA Control System and Audit Processor are logged.

The Event Log Viewer allows users to browse this log and filter by date, time, event class, and event type and automatically refresh the list and/or view the most recent events.

Event Log Viewer—Invoking

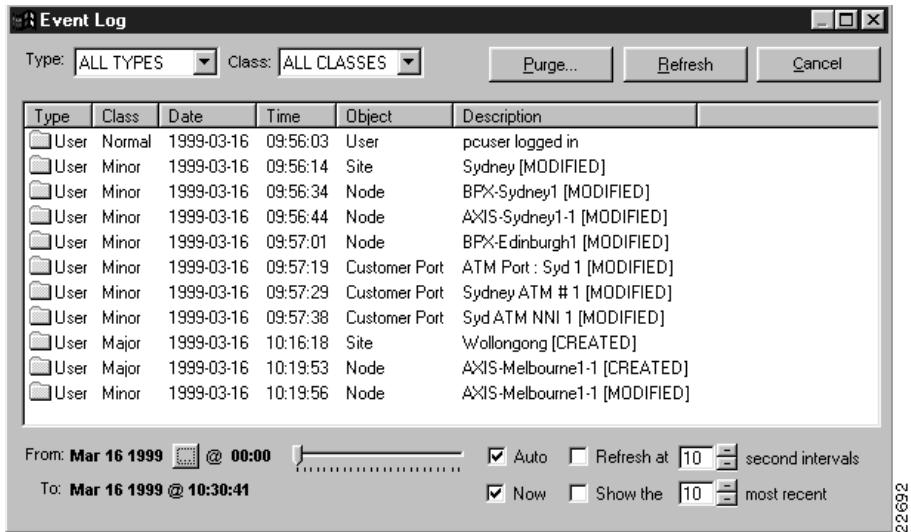
To invoke the WSA Event Log Viewer, select **Tools->Event Log...** from the WSA Explorer Client menu bar, as shown in Figure 6-6, “Event Log Viewer Invocation”.

Figure 6-6 Event Log Viewer Invocation



A new Event Log Viewer appears, as shown in Figure 6-7, “Event Log Viewer”.

Figure 6-7 Event Log Viewer



Note The event log viewer is a non-modal dialog. It is possible to have more than one open at the same time, each one filtering for different event types and/or classes.



Caution When an Event Log Viewer is open, closing all WSA Explorer windows does NOT exit the application. This is deliberate, because the user may want to only have an Event Log Viewer window running. However, care should be taken to close this viewer when it is no longer required.

Event Log Viewer—Filters

The event log can be filtered by the type and/or the class of the event by selecting an item from the drop-down list boxes, as shown in Figure 6-8, “Selecting an Event Type Filter”, and Figure 6-9, “Selecting an Event Class Filter”.

Figure 6-8 Selecting an Event Type Filter

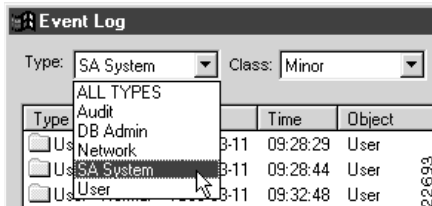
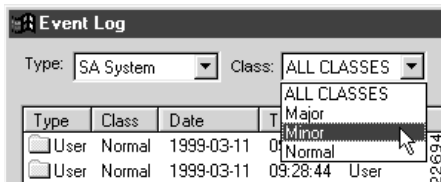


Figure 6-9 Selecting an Event Class Filter



Note In this release of WSA, only events of type **User**, **Audit**, and **SA System** are ever raised, so that filtering on any other type always results in an empty list.

The supported event types are generated by the following sources:

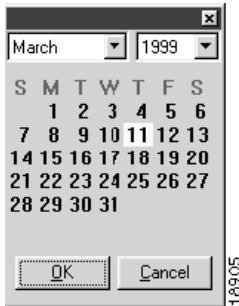
- Audit: WSA Audit Processor
- SA System: WSA Control System
- User: WSA Explorer and WSA System Administration clients

Event Log Viewer—Date Ranges

In addition to filtering by event type and class, the date range that is used to search for events can be adjusted to suit your requirements.

The end dates for the list can be selected by pressing the ... button next to the current date and selecting a new date from the popup date selector, as shown in Figure 6-10, “Choosing a New Date”.

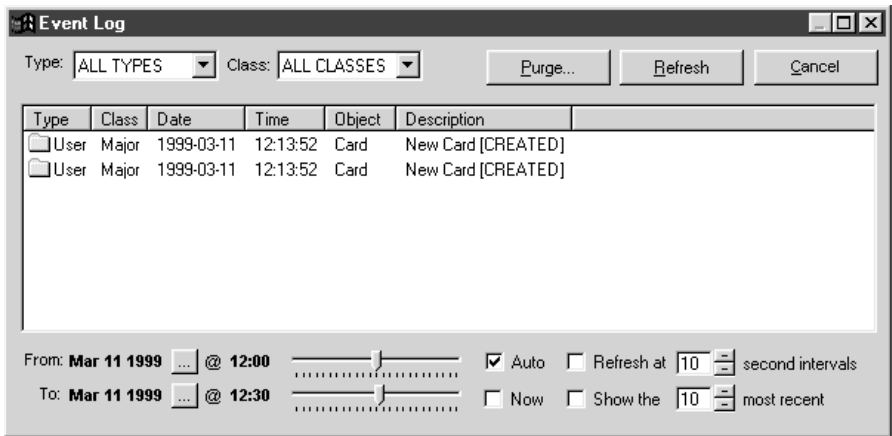
Figure 6-10 Choosing a New Date



If **Now** is checked, the list refresh always goes up to the current date and time at the instant the refresh takes place. To set an explicit end date for the list, uncheck **Now** and select an appropriate value.

The slider bars next to the date and time fields can be used to adjust the time when the listed events start and/or finish, as shown in Figure 6-11, “Adjusting the List Start Time”.

Figure 6-11 Adjusting the List Start Time



The default date and time range is from 00:00 on the day the Event Viewer was invoked to the time of the last refresh, as shown in Figure 6-12, “Default Date Range”.

Figure 6-12 Default Date Range



Event Log Viewer—Refreshing the List

The event log list can be refreshed by clicking on **Refresh**, or by setting a timer by checking **Refresh at** and setting the interval to a suitable number of seconds, as shown in Figure 6-13, “Setting the Refresh Interval”.

Figure 6-13 **Setting the Refresh Interval**



If **Now** is checked, whenever the list is refreshed, either on a timer or by pressing **Refresh**, the **To** date of the date range is updated to match the time of the refresh.

If **Auto** is checked, as shown in Figure 6-14, “Allowing Auto Refresh”, and any change is made to the filter, date range of most recent event count, the list automatically refreshes. If **Auto** is unchecked, refreshes occur manually by pressing **Refresh**.

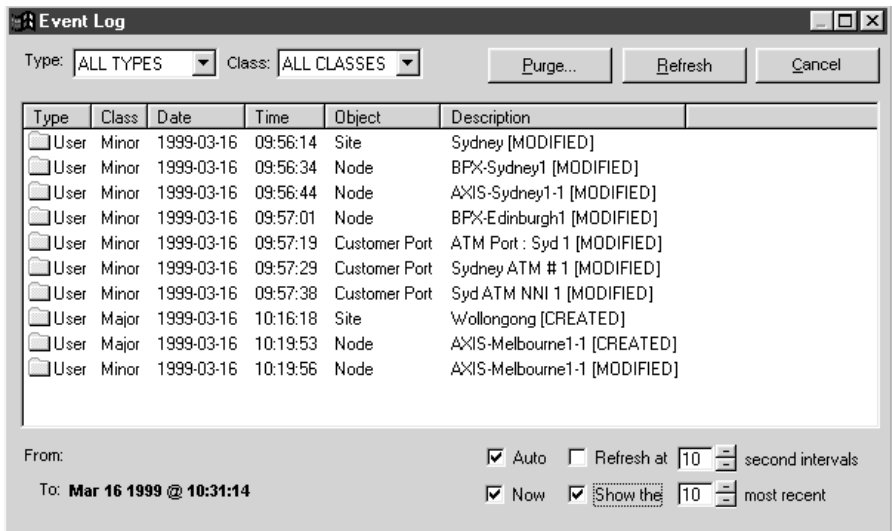
Figure 6-14 **Allowing Auto Refresh**



Event Log Viewer—Most Recent Events

By checking **Show the** and setting the most recent event count to a suitable level, the list always displays a short list of the most recent events that can easily be monitored in a small window, as shown in Figure 6-15, “Viewing the Most Recent Events”.

Figure 6-15 Viewing the Most Recent Events

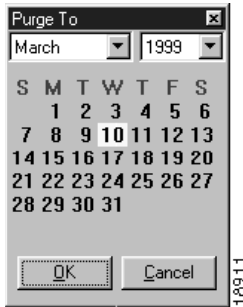


18910

Event Log Viewer—Purging the Event Log

To purge all entries from the event log prior to a supplied date, press **Purge...** and a date selection dialog appears, as shown in Figure 6-16, “Choosing the Purge Start Date”.

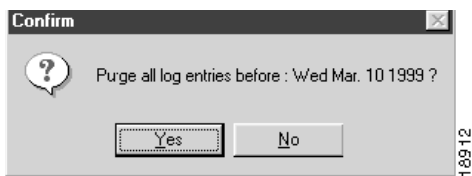
Figure 6-16 Choosing the Purge Start Date



Select the date up to which you want to purge. (The default date is one day prior to the current date.) Then press **OK** to select that date, or press **Cancel** to close the dialog and cancel the purge operation.

If you selected a date to purge to, a confirmation dialog appears, as shown in Figure 6-17, “Purge Confirmation”.

Figure 6-17 Purge Confirmation



Press **Yes** to purge the event log to this date, or press **No** to cancel the purge operation.

Options

The following sections give detailed information about **Options**:

- Options—Description on page 6-17
- Options—Invoking on page 6-17
- Options—Setting Your Password on page 6-19

Options—Description

The only option available in the current version of WSA is to set your login password.

Options—Invoking

To invoke the WSA Options Dialog, select **Tools->Options...** from the WSA Explorer Client menu bar, as shown in Figure 6-18, “Options Invocation”.

Figure 6-18 Options Invocation



An Options dialog appears, as shown in Figure 6-19, “Options Dialog”.

Figure 6-19 Options Dialog



Options—Setting Your Password

To set your password, enter your existing password and your new password, with confirmation, in the appropriate entry fields, as shown in Figure 6-20, “Setting Your Password”.

Figure 6-20 **Setting Your Password**



Note The **New Password** field does not appear until at least one character of the old password has been typed. The **Confirm** field does not appear until at least one character of the new password has been typed.

Press **Apply** to set the new password. Press **OK** to set the new password and close the dialog. Press **Cancel** to close the dialog and leave your password as it is.

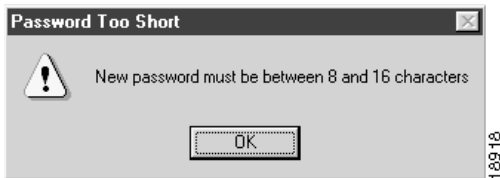
If the existing password that you supply is incorrect, a warning dialog appears, as shown in Figure 6-21, “Password Error”.

Figure 6-21 Password Error



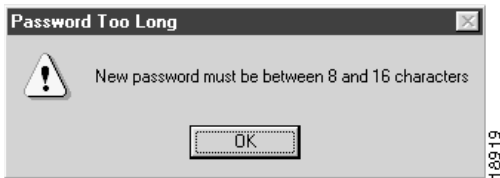
Your new password must be between 8 and 16 characters inclusive. If it is too short, a warning dialog appears, as shown in Figure 6-22, “Password Too Short”.

Figure 6-22 Password Too Short



If the password that you enter is too long, a warning dialog appears, as shown in Figure 6-23, “Password Too Long”.

Figure 6-23 Password Too Long



If the new password and its confirmation do not match, a warning dialog appears, as shown in Figure 6-24, “Password Confirmation Error”.

Figure 6-24 Password Confirmation Error



Template Viewer

The following sections give detailed information about **Template Viewer**:

- Template Viewer—Description on page 6-22
- Template Viewer—Invoking on page 6-23
- Template Viewer—Types on page 6-25
- Template Viewer—Connection Templates and Parameters on page 6-26

Template Viewer—Description

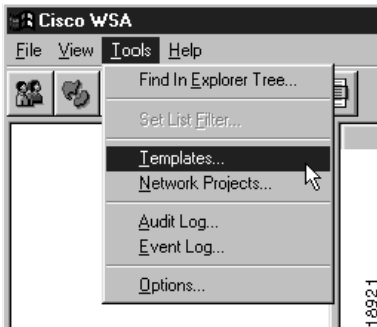
WSA uses templates to define configuration parameters for nodes, cards, ports, net links, and connections. Creation, modification, and deletion of templates is done with the WSA System Administration Client (refer to *Cisco WAN Service Administrator System Administrator Reference*).

The Template Viewer allows users to examine the templates that are currently available, but does not facilitate modification of these templates.

Template Viewer—Invoking

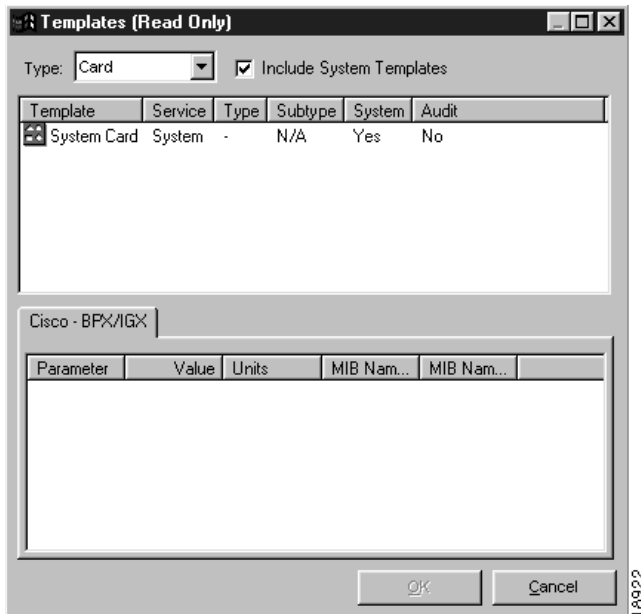
To invoke the WSA Template Viewer, select **Tools->Templates...** from the WSA Explorer Client menu bar, as shown in Figure 6-25, “Template Viewer Invocation”.

Figure 6-25 Template Viewer Invocation



A Template Viewer dialog appears, as shown in Figure 6-26, “Template Viewer”.

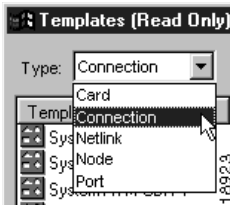
Figure 6-26 **Template Viewer**



Template Viewer—Types

WSA supports templates for nodes, cards, ports, net links, and connections. To select a template type, select an item from the drop-down list box, as shown in Figure 6-27, “Selecting a Template Type”.

Figure 6-27 **Selecting a Template Type**

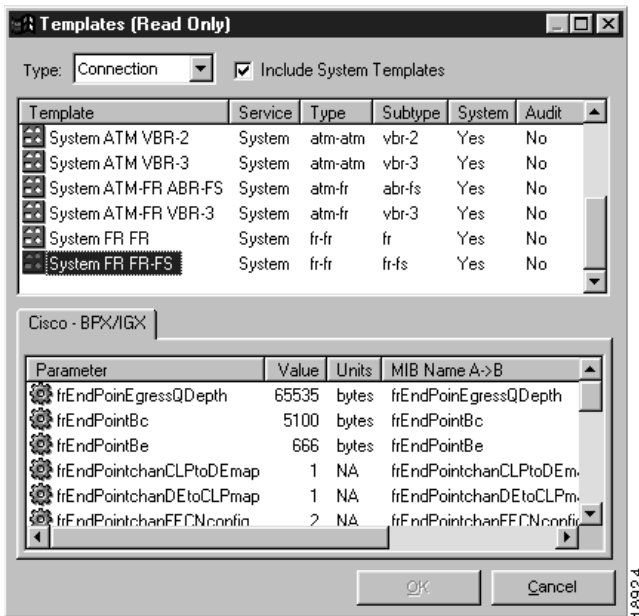


Template Viewer—Connection Templates and Parameters

Connection templates are used by the WSA Control System to determine the Quality of Service (QoS) parameters to pass in the connection creation commands it generates for provisioning connections in the network.

To view the parameters set for a specific connection template, select the template name from the template list, and the parameter list is populated with the defined QoS parameters for this template, as shown in Figure 6-28, “Connection Parameters”.

Figure 6-28 Connection Parameters



Note None of the system templates that are supplied with WSA have any QoS parameters set. This indicates to the WSA Control system that connections provisioned based on these templates should accept the IOS defaults for all relevant parameters.