



## **Firepower Management Center REST API Quick Start Guide, Version 6.2.3**

**First Published:** 2017-11-27

**Last Modified:** 2019-09-20

### **Americas Headquarters**

Cisco Systems, Inc.  
170 West Tasman Drive  
San Jose, CA 95134-1706  
USA  
<http://www.cisco.com>  
Tel: 408 526-4000  
800 553-NETS (6387)  
Fax: 408 527-0883

THE SPECIFICATIONS AND INFORMATION REGARDING THE PRODUCTS IN THIS MANUAL ARE SUBJECT TO CHANGE WITHOUT NOTICE. ALL STATEMENTS, INFORMATION, AND RECOMMENDATIONS IN THIS MANUAL ARE BELIEVED TO BE ACCURATE BUT ARE PRESENTED WITHOUT WARRANTY OF ANY KIND, EXPRESS OR IMPLIED. USERS MUST TAKE FULL RESPONSIBILITY FOR THEIR APPLICATION OF ANY PRODUCTS.

THE SOFTWARE LICENSE AND LIMITED WARRANTY FOR THE ACCOMPANYING PRODUCT ARE SET FORTH IN THE INFORMATION PACKET THAT SHIPPED WITH THE PRODUCT AND ARE INCORPORATED HEREIN BY THIS REFERENCE. IF YOU ARE UNABLE TO LOCATE THE SOFTWARE LICENSE OR LIMITED WARRANTY, CONTACT YOUR CISCO REPRESENTATIVE FOR A COPY.

The Cisco implementation of TCP header compression is an adaptation of a program developed by the University of California, Berkeley (UCB) as part of UCB's public domain version of the UNIX operating system. All rights reserved. Copyright © 1981, Regents of the University of California.

NOTWITHSTANDING ANY OTHER WARRANTY HEREIN, ALL DOCUMENT FILES AND SOFTWARE OF THESE SUPPLIERS ARE PROVIDED "AS IS" WITH ALL FAULTS. CISCO AND THE ABOVE-NAMED SUPPLIERS DISCLAIM ALL WARRANTIES, EXPRESSED OR IMPLIED, INCLUDING, WITHOUT LIMITATION, THOSE OF MERCHANTABILITY, FITNESS FOR A PARTICULAR PURPOSE AND NON-INFRINGEMENT OR ARISING FROM A COURSE OF DEALING, USAGE, OR TRADE PRACTICE.

IN NO EVENT SHALL CISCO OR ITS SUPPLIERS BE LIABLE FOR ANY INDIRECT, SPECIAL, CONSEQUENTIAL, OR INCIDENTAL DAMAGES, INCLUDING, WITHOUT LIMITATION, LOST PROFITS OR LOSS OR DAMAGE TO DATA ARISING OUT OF THE USE OR INABILITY TO USE THIS MANUAL, EVEN IF CISCO OR ITS SUPPLIERS HAVE BEEN ADVISED OF THE POSSIBILITY OF SUCH DAMAGES.

Any Internet Protocol (IP) addresses and phone numbers used in this document are not intended to be actual addresses and phone numbers. Any examples, command display output, network topology diagrams, and other figures included in the document are shown for illustrative purposes only. Any use of actual IP addresses or phone numbers in illustrative content is unintentional and coincidental.

All printed copies and duplicate soft copies of this document are considered uncontrolled. See the current online version for the latest version.

Cisco has more than 200 offices worldwide. Addresses and phone numbers are listed on the Cisco website at [www.cisco.com/go/offices](http://www.cisco.com/go/offices).

Cisco and the Cisco logo are trademarks or registered trademarks of Cisco and/or its affiliates in the U.S. and other countries. To view a list of Cisco trademarks, go to this URL: [www.cisco.com/go/trademarks](http://www.cisco.com/go/trademarks). Third-party trademarks mentioned are the property of their respective owners. The use of the word partner does not imply a partnership relationship between Cisco and any other company. (1721R)

© 2017–2018 Cisco Systems, Inc. All rights reserved.



## CONTENTS

---

<b>CHAPTER 1</b>	<b>About the Firepower Management Center REST API</b>	<b>1</b>
	About the Firepower Management Center REST API	1
	Enabling the REST API	1
	Best Practices	2
	Additional Resources	2

---

<b>CHAPTER 2</b>	<b>About the API Explorer</b>	<b>3</b>
	About the API Explorer	3
	Authentication to the API Explorer	3
	Logging into API Explorer	3
	Setting the Domain	4
	Obtaining Sample Code	4
	Obtaining Sample Code	5
	Viewing API Parameters	5

---

<b>CHAPTER 3</b>	<b>Connecting with a Client</b>	<b>7</b>
	Authentication from a REST API Client	7
	Requesting an Authentication Token	8
	Refreshing an Authentication Token	9

---

<b>CHAPTER 4</b>	<b>Objects in the REST API</b>	<b>11</b>
	Request Structure	11
	Bulk Rule Posting	13
	Response Structure	14
	Rate Limiting	16
	Payload Limiting	16

Audit Services	16
GET auditrecords	16
Deployment Services	17
GET deployabledevices	17
POST deploymentrequests	17
Device Group Services	17
DELETE devicegrouprecords	17
PUT devicegrouprecords	17
POST devicegrouprecords	17
GET devicegrouprecords	18
Device HA Pair Services	18
DELETE ftddevicehapair	18
PUT ftddevicehapair	18
POST ftddevicehapairs	19
GET ftddevicehapairs	19
Device Services	19
POST copyconfigrequests	19
DELETE devicerecords	19
PUT devicerecords	20
POST devicerecords	20
GET devicerecords	20
PUT fpphysicalinterfaces	20
GET fpphysicalinterfaces	20
DELETE fplogicalinterfaces	21
PUT fplogicalinterfaces	21
POST fplogicalinterfaces	21
GET fplogicalinterfaces	21
DELETE inlinesets	22
PUT inlinesets	22
POST inlinesets	22
GET inlinesets	22
GET staticroutes	22
DELETE ipv4staticroutes	23
PUT ipv4staticroutes	23

POST ipv4staticroutes	23
GET ipv4staticroutes	23
DELETE ipv6staticroutes	24
PUT ipv6staticroutes	24
POST ipv6staticroutes	24
GET ipv6staticroutes	24
DELETE virtualswitches	24
PUT virtualswitches	25
POST virtualswitches	25
GET virtualswitches	25
PUT fpphysicalinterfaces	25
GET fpphysicalinterfaces	26
PUT physicalinterfaces	26
GET physicalinterfaces	26
GET bridgegroupinterfaces	26
POST bridgegroupinterfaces	27
PUT bridgegroupinterfaces	27
DELETE bridgegroupinterfaces	27
GET redundantinterfaces	27
POST redundantinterfaces	28
PUT redundantinterfaces	28
DELETE redundantinterfaces	28
GET etherchannelinterfaces	28
POST etherchannelinterfaces	29
PUT etherchannelinterfaces	29
DELETE etherchannelinterfaces	29
GET subinterfaces	29
POST subinterfaces	29
PUT subinterfaces	30
DELETE subinterfaces	30
GET fpinterfacestatistics	30
Intelligence Services	30
POST collections	30
POST discoveryinfo	30

GET element	31
DELETE incident	31
PUT incident	31
GET incident	31
PUT indicator	31
GET indicator	32
PUT observable	32
GET observable	32
PUT settings	32
GET settings	33
DELETE source	33
PUT source	33
POST source	33
GET source	33
Object Services	34
GET anyprotocolportobjects	34
GET applicationcategories	34
GET applicationfilters	34
GET applicationproductivities	34
GET applicationrisks	35
GET applications	35
GET applicationtags	35
GET applicationtypes	35
GET continents	36
GET countries	36
GET endpointdevicetypes	36
GET geolocation	36
DELETE hosts	37
PUT hosts	37
POST hosts	37
GET hosts	37
DELETE icmpv4objects	37
PUT icmpv4objects	38
POST icmpv4objects	38

GET icmpv4objects	38
DELETE icmpv6objects	38
PUT icmpv6objects	38
POST icmpv6objects	38
GET icmpv6objects	39
GET isecuritygroupstags	39
GET networkaddresses	39
DELETE networkgroups	39
PUT networkgroups	40
POST networkgroups	40
GET networkgroups	40
DELETE networks	40
PUT networks	40
POST networks	41
GET networks	41
DELETE portobjectgroups	41
PUT portobjectgroups	41
POST portobjectgroups	41
GET portobjectgroups	42
GET ports	42
DELETE protocolportobjects	42
PUT protocolportobjects	42
POST protocolportobjects	42
GET protocolportobjects	43
DELETE ranges	43
PUT ranges	43
POST ranges	43
GET ranges	43
GET realms	44
GET realmusergroups	44
GET realmusers	44
GET securitygroupstags	45
DELETE securityzones	45
PUT securityzones	45

POST securityzones	45
GET securityzones	45
GET siurlfeeds	46
GET siurllists	46
DELETE slamonitors	46
PUT slamonitors	46
POST slamonitors	46
GET slamonitors	47
GET tunneltags	47
GET urlcategories	47
DELETE urlgroups	47
PUT urlgroups	47
POST urlgroups	48
GET urlgroups	48
DELETE urls	48
PUT urls	48
POST urls	48
GET urls	48
GET variablesets	49
DELETE vlangrouptags	49
PUT vlangrouptags	49
POST vlangrouptags	49
GET vlangrouptags	49
DELETE vlangtags	50
PUT vlangtags	50
POST vlangtags	50
GET vlangtags	50
Policy Services	51
DELETE accesspolicies	51
PUT accesspolicies	51
POST accesspolicies	51
GET accesspolicies	51
DELETE accessrules	51
PUT accessrules	52



POST accessrules	52
GET accessrules	52
PUT defaultactions	52
GET defaultactions	52
GET filepolicies	53
DELETE ftdnatpolicies	53
PUT ftdnatpolicies	53
POST ftdnatpolicies	53
GET ftdnatpolicies	54
DELETE autonatrules	54
PUT autonatrules	54
POST autonatrules	54
GET autonatrules	54
DELETE manualnatrules	55
PUT manualnatrules	55
POST manualnatrules	55
GET manualnatrules	55
GET natrules	56
GET intrusionpolicies	56
GET snmpalerts	56
GET syslogalerts	56
Policy Assignment Services	57
PUT policyassignments	57
POST policyassignments	57
GET policyassignments	57
Status Services	57
GET taskstatuses	57
System Information	58
GET serverversion	58





## CHAPTER 1

# About the Firepower Management Center REST API

---

The Firepower Management Center REST API provides a lightweight API to manage a Firepower Management Center.

- [About the Firepower Management Center REST API, on page 1](#)
- [Enabling the REST API, on page 1](#)
- [Best Practices, on page 2](#)
- [Additional Resources, on page 2](#)

## About the Firepower Management Center REST API

With the release of Cisco's Firepower Management Center REST API, you now have light-weight, easy-to-use option for managing Firepower Threat Defense and legacy Firepower devices through a Firepower Management Center.

The REST API is an application programming interface (API), based on “RESTful” principles, which you can quickly enable on any Firepower Management Center running version 6.1 or higher, and use with a REST client.

After installing a REST client, you can contact the specific Firepower Management Center's REST agent and use standard HTTP methods to access current configuration information, and issue additional configuration parameters.

## Enabling the REST API

In Firepower Management Center, the REST API is enabled by default. However, if you are intending to use the REST API, you should confirm that it is enabled.



---

**Note**

If you are using UCAPL mode, check that the REST API is not enabled.

---

### Procedure

---

- Step 1** Navigate to System>Configuration>REST API Preferences>Enable REST API
- Step 2** Check the "Enable REST API" checkbox.
- Step 3** Click "Save". A "Save Successful" dialog will display when the REST API is enabled.
- 

## Best Practices

Cisco recommends the following best practices for optimal results with the REST API:

- Keep UI users and script users separate. Especially do not use the admin account as an API user.
- Do not give script users more privilege than needed.
- Always validate the content coming from the server.
- Validate/sanitize JSON content, as it may include embedded executable code.
- If you are using CC or UCAPL mode you should disable REST API access to the Firepower Management Center and managed devices.

## Additional Resources

Additional resources for the Firepower Management Center REST API can be found on Cisco DevNet at <https://developer.cisco.com/firepower/>.



## CHAPTER 2

# About the API Explorer

---

- [About the API Explorer, on page 3](#)
- [Authentication to the API Explorer, on page 3](#)
- [Obtaining Sample Code, on page 4](#)
- [Viewing API Parameters, on page 5](#)

## About the API Explorer

The API Explorer provides a limited interface for the REST API as well as giving a view of the abilities of the REST API.

The API Explorer resides on the Firepower Management Center, and can be accessed via the Firepower Management Center at:

```
https://<management_center_IP_or_name>:<https_port>/api/api-explorer
```

This explorer provides the list of APIs available on the Firepower Management Center, and their details.

## Authentication to the API Explorer

The REST API relies on the same authentication as the Firepower Management Center. Each function in the REST API maps to permissions in the Firepower Management Center.

You can log into the API Explorer using any account on the Firepower Management Center, but you will only be able to perform the functions for which the account has permissions. For more information on setting permissions for user roles, see the *Firepower Management Center Configuration Guide*.

The first time you connect to the API Explorer you may receive an error that the connection is not secure due to an invalid certificate. You will need to add an exception in your browser to use the certificate and accept the connection.

## Logging into API Explorer

The REST API uses the same authentication and permission model as the Firepower Management Center. See the *Firepower Management Center Configuration Guide* for more information.

### Before you begin

Make sure you have an account on your Firepower Management Center with the required permissions to perform the tasks you want to perform using the REST API.

### Procedure

---

- Step 1** Navigate to the following URL: `https://<management_center_IP_or_name>:<https_port>/api/api-explorer`  
If you experience an extended load time for the logon screen when using a Firefox browser, enter **about:support** in the search bar and click the **Refresh Firefox** option, then view the Firepower Management Center interface with self-signed certificates in the same Firefox browser. For more information, see <https://support.mozilla.org/en-US/kb/refresh-firefox-reset-add-ons-and-settings>.
- Step 2** Log in with your username and password and click "Sign In"
- 

### What to do next

Locate the desired resource and request.

## Setting the Domain

The REST API can perform functions globally, in the default domain, or in specific domains.

### Before you begin

You must have a configured Firepower Management Center, an account with permissions to access the REST API in one or more domains configured on your FMC.

### Procedure

---

In the upper right, drop down the `Domains` menu and select the desired domain.

---

### What to do next

Locate the desired resource and request type.

## Obtaining Sample Code

You can use the Export Operation button in API Explorer to save the displayed method example as a Python or Perl script file to your local host. This script can be used to make that REST call, and can be integrated into your application. This is meant primarily as an educational and bootstrapping tool.

- Python: The Python scripts require you to install Python, available from <https://www.python.org/>. Once you've installed Python, you can run your script with `python script.py username password`.

- Perl: Using the Perl scripts requires some additional set-up—you need five components:
  - Perl package, found at <http://www.perl.org/>
  - Bundle::CPAN, found at <http://search.cpan.org/~andk/Bundle-CPAN-1.861/CPAN.pm>
  - REST::Client, found at <http://search.cpan.org/~mcrawfor/REST-Client-88/lib/REST/Client.pm>
  - MIME::Base64, found at <http://perldoc.perl.org/MIME/Base64.html>
  - JSON, found at <http://search.cpan.org/~makamaka/JSON-2.90/lib/JSON.pm>

## Obtaining Sample Code

The API Explorer can create sample code in Python and Perl to aid in creating a REST API client.

### Before you begin

You must have a configured Firepower Management Center and an account on that center with the permissions required to use the desired REST API functions.

### Procedure

- 
- |               |   |
|---------------|---|
| <b>Step 1</b> | Select the resource where you want to obtain sample code from the API INFO menu.  |
| <b>Step 2</b> | Locate the desired function and select <code>DELETE</code> , <code>PUT</code> , <code>POST</code> , or <code>GET</code> . |
| <b>Step 3</b> | Select and input all other parameters for the desired function. This will vary depending on the function.                 |
| <b>Step 4</b> | On the right, drop down the menu for "Export operation in" and select "Python script" or "Perl script".                   |
| <b>Step 5</b> | The sample code will pop up in a new window. Cut and paste this code to use in your REST API client.                      |
- 

### What to do next

Use this sample code to implement your own REST API client.

## Viewing API Parameters

Each resource has a set of parameters and fields associated with it. You can view the parameters and fields by performing any of the supported operations for that resource within API Explorer.

### Before you begin

You must have a configured Firepower Management Center and an account on that center with the permissions required to use the desired REST API functions.

## Procedure

---

- Step 1** Select the desired resource.
- Step 2** Select one of the supported operations for that resource.
-





## CHAPTER 3

# Connecting with a Client

You can access the REST API using any REST API client. Typically REST API clients are available as browser plugins, but any REST API client is allowed.



**Note** If connecting to the REST API for the first time, you will receive a certificate warning. You need to accept the certificate in order to use the REST API.

- [Authentication from a REST API Client, on page 7](#)

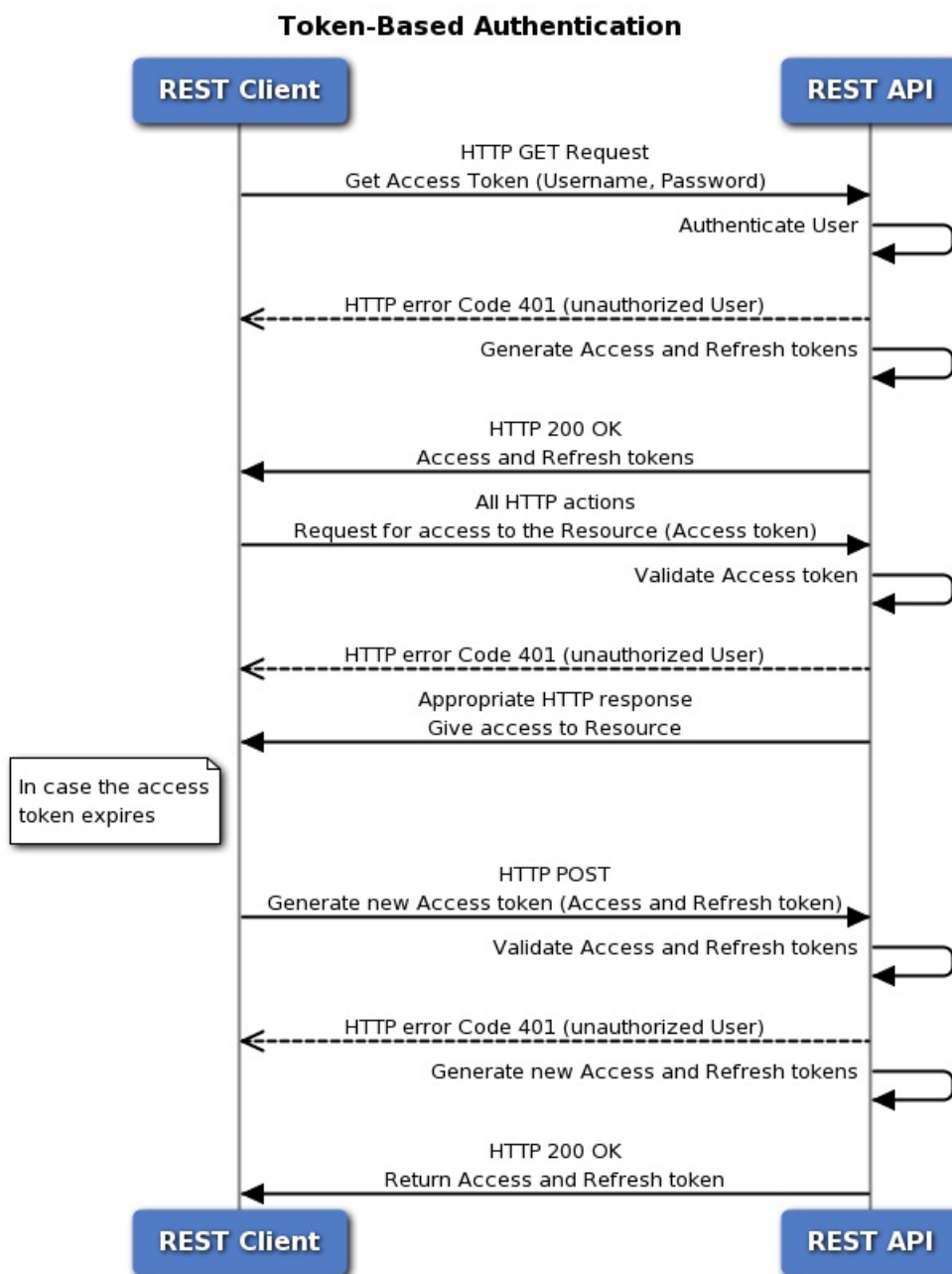
## Authentication from a REST API Client

**Cisco recommends that you use different accounts for interfacing with the API and the Firepower User Interface.** Credentials cannot be used for both interfaces simultaneously, and will be logged out without warning if used for both.

The first time you connect to the REST API you may receive an error that the connection is not secure due to an invalid certificate. Add an exception in your browser to use the certificate and accept the connection.

With Token Based Authentication you obtain a token by providing your username and password. You use this token to access an HTTP service for a limited time period without the need for the username and password with every request. In other words, to eliminate the need for authenticating with your username and password with each request, you replace user credentials with a uniquely generated access token, which you use for accessing resources for up to 30 minutes and can refresh up to three times.

The diagram below illustrates the concept of token-based authentication:



## Requesting an Authentication Token

The Token Generation Utility provides an authentication token which can be used in your REST API client.

### Before you begin

You must have a configured Firepower Management Center and an account on that center with credentials to use the REST API. You must also have a REST API Client which can perform basic authentication.

### Procedure

---

- Step 1** Open your REST API Client.
- Step 2** Set the client to make a POST command to the following URL:  
`https://<management_center_IP_or_name>/api/fmc_platform/v1/auth/generatetoken.`
- Step 3** Include the username and password as a basic authentication header. The POST body should be blank.
- 

### What to do next

Add the header `X-auth-access-token:<authentication token value>` in requests to the API.

Add the headers `X-auth-access-token:<authentication token value>` and `X-auth-refresh-token:<refresh token value>` in requests to refresh the token as described in [Authentication from a REST API Client, on page 7](#)

Use the `Domain_UUID` from the authentication token in all REST requests to the server.

## Refreshing an Authentication Token

Firepower Management Center REST API authentication tokens are valid for 30 minutes, and can be refreshed up to three times.

### Before you begin

Obtain valid authentication and refresh tokens from the Firepower Management Center REST API. Ensure these tokens have been refreshed less than three times.

### Procedure

---

- Step 1** Open your REST API Client.
- Step 2** Set the client to make a POST command to the following URL:  
`https://<management_center_IP_or_name>/api/fmc_platform/v1/auth/refreshToken` with the headers `X-auth-access-token:<authentication token value>` and `X-auth-refresh-token:<refresh token value>`.
- 

### What to do next

Add the header `X-auth-access-token:<new authentication token value>` in requests to the API.

Add the header `X-auth-refresh-token:<new refresh token value>` in requests to refresh the token.





## CHAPTER 4

# Objects in the REST API

---

- [Request Structure, on page 11](#)
- [Bulk Rule Posting, on page 13](#)
- [Response Structure, on page 14](#)
- [Rate Limiting, on page 16](#)
- [Payload Limiting, on page 16](#)
- [Audit Services, on page 16](#)
- [Deployment Services, on page 17](#)
- [Device Group Services, on page 17](#)
- [Device HA Pair Services, on page 18](#)
- [Device Services, on page 19](#)
- [Intelligence Services, on page 30](#)
- [Object Services, on page 34](#)
- [Policy Services, on page 51](#)
- [Policy Assignment Services, on page 57](#)
- [Status Services, on page 57](#)
- [System Information, on page 58](#)

## Request Structure

Request Structure:

Requests are sent to the Firepower Management Center as HTTPS requests with the Uniform Resource Identifier (URI) of the form described below:

```
https://<management_center_IP_or_name>:<https_port>/<object_URL>/object_UUIDoptions
```

Where:

- `<management_center_IP_or_name>`  
is the IP address or Fully Qualified Domain Name of the Firepower Management Center
- `<https_port>`  
is the port number used by the Firepower Management Center for HTTPS connections. This port is always 443.
- `<object_URL>`

is the specific URL for the desired resource. These URLs are unique for each resource and are given below.

- *options*

are the options given with the request. Options can be used to modify the output and filter results.

- *{UUID}*

Many URLs contain one or more UUIDs which must be specified. Most URIs include the domain UUID, which can be found in the Authentication Token. When deleting or modifying an object, or requesting information about a specific object, the URI will end with the object UUID.

Available request methods are:

- GET

– Retrieves data from the specified object. GET is a read-only operation.

- PUT

– Adds the supplied information to the specified object; returns a 404 Resource Not Found error if the object does not exist.



**Note**

Currently PUT may be used to create a new object, but this ability may be removed in later releases. Use POST to create new objects and PUT to modify existing objects.

- POST

– Creates the object with the supplied information. POST operations should be followed with a payload consisting of the JSON object to be created, enclosed in braces:

```
{object}
```



**Note**

The maximum number of rules you can use depends on memory of the device. There is no set limit, because complex rules use more memory. For rule performance and optimization guidelines, see the Firepower Management Center Configuration Guide.

- DELETE

– Deletes the specified object.

- PATCH

– **Not supported.**

The API supports query parameters for almost all requests. For GET requests, the following query parameters can be used to control the number of returned objects and the pagination:

- *expanded*

- This is a True/False value which indicates whether you get a full listing of an item in a list or only a reference. Some fields will only show if this flag is set to true.

- `offset`
  - Indicates the position in the list where you want to start.
- `limit`
  - Indicates the number of items you want to retrieve in a page.

The API supports filtering on the basis of query parameters passed with a request. Filtering can be done based on specific attributes in a model. The parameters available for filtering vary by object, and are listed with the request below.

## Bulk Rule Posting

Multiple access control rules can be added with a POST command using the bulk insert feature. This feature allows as many as 1,000 rules to be added at once.

This feature is only available for access rules.

The URL for this feature is:

```
https://{fmc_ip_or_name}:{https_port}/api/fmc_config/v1/domain/{domain_UUID}/policy/accesspolicies/{policy_UUID}/accessrules?bulk=true
```

The option:

```
?bulk=true
```

indicates that that multiple rules will be used in the payload of this request.

All objects in the payload of the bulk POST request must be of the same type. You cannot mix different objects in the same bulk request.

Unlike a normal POST operation, the bulk POST requires a list of JSON objects. This list may have as many as 1,000 objects or as few as one. The individual JSON objects must be enclosed in braces. Each object must be separated by commas, and the entire list is enclosed in brackets:

```
[{object}]
[{object1},{object2},{object3},{object4},{object5} ...]
```

The following query parameters are supported in bulk POST requests:

- `bulk=true`

This parameter specifies that the bulk POST feature is being used in the query. This parameter is **required** for bulk rule posting.
- `section=mandatory/default`

This parameter specifies the section into which the rules will be added. If this parameter is not used the section will be the default section. Only `mandatory` and `default` are allowed values. If a section is specified it must exist or the request will fail. If a section is specified, a category cannot be specified.
- `category=<Name of the category>`

This parameter specifies the category into which the rules will be added. If a category is specified it must exist or the request will fail. If a category is specified, a section cannot be specified.
- `insertAfter=<Index of rule>`

This parameter specifies that the rules will be inserted after the specified rule index. If no section or category is specified, the rules will be added to the section or category after the insertion point.

- `insertBefore=<Index of rule>`

This parameter specifies that the rules will be inserted before the specified rule index. If no section or category is specified, the rules will be added to the section or category before the insertion point. `insertBefore` takes precedence over `insertAfter` - if both are specified, the `insertBefore` parameter will apply.

When a rule or group of rules are inserted at an index which is part of either a section or a category, the category or section parameter can be used along with index to specify the insertion location of the rule(s). If an index is given along with a section or category, but the index is not in that section or category, you will receive an error.

If no index is specified, rules will be inserted after the end of the access policy. If a category or section is specified but no index is specified, rules will be inserted at the end of the category or section.

In any given POST all of the rules will be inserted at a single point. You cannot specify multiple insertion locations in a POST request.




---

**Note** Rule order affects how orders are parsed by the Firepower Management Center.

---

## Response Structure




---

**Note** The REST API will serve only 25 results per page. This can be increased up to 1000 using the limit query parameter.

---

The response structure can be:

- **LOCATION** – Newly created resource ID; for POST only—holds the new resource ID (as a URI representation).
- **CONTENT-TYPE** – Media type describing the response message body; describes the representation and syntax of the response message body.
- Each response includes an HTTP status or error code. Available codes fall into these categories:
  - **20x** - A two-hundred series code indicates successful operation, including:
    - **200 OK**
      - Standard response for successful requests.
    - **201 Created**
      - Request completed; new resource created.
    - **202 Accepted**
      - Request accepted, but processing not complete.
    - **204 No Content**
      - Server successfully processed request; no content is being returned.



- 4xx - A four-hundred series code indicates a client-side error, including:
  - 400 Bad Request
    - Invalid query parameters, including unrecognized parameters, missing parameters, or invalid values.
    - This can indicate that the object was edited or deleted via REST API such that the corresponding policy is invalidated.
  - 404 Not Found
    - The provided URL does not match an existing resource. For example, an HTTP DELETE may fail because the resource is unavailable.
  - 405 Method not Allowed
    - An HTTP request was presented that is not allowed on the resource; for example, a POST on a read-only resource.
  - 422 Unprocessable Entity
    - The payload is too large. This will occur when you send a payload greater than 2048000 bytes.
    - The payload contains an unprocessable or unreadable entity such as a invalid attribute name or incorrect JSON syntax.
  - 429 Too Many Requests
    - Too many requests were sent to the API. This error will occur if you send more than 120 requests per minute.
    - Too many concurrent requests. The system cannot accept more than 10 parallel requests from all clients.
    - Too many write operations per server. The API will only allow one PUT, POST, or DELETE request per user on a server at a time.
- 5xx - A five-hundred series code indicates a server-side error.

In the case of an error, in addition to the error code, the return response may include an error object containing more details about the error. The JSON error/warning response schema is as follows:

```
{
  "error": {
    "category": "FRAMEWORK",
    "messages": [
      {
        "description": "Action is mandatory to be specified."
      }
    ],
    "severity": "ERROR"
  }
}
```

where the object properties are:

Table 1: Object Properties

Property	Type	Description
messages	List of Dictionaries	List of error or warning messages
code	String	Error/Warning/Info code
details	String	Detailed message corresponding to Error/Warning/Info

## Rate Limiting

The Firepower Management Center REST API implements rate limiting to reduce network load.

The API will accept no more than 120 messages per minute from an individual IP address. It will only allow 10 simultaneous connections per IP address. These are not configurable parameters.

If a client exceeds these limits, the API will give an HTTP 429 error.

## Payload Limiting

The API cannot accept a message with a payload greater than 2048000 bytes. This applies to both the REST API and to API Explorer. This is not a configurable parameter.

If a message exceeds this limit, the API will give an HTTP 422 error.

## Audit Services

### GET auditrecords

Request Type: **GET**

Description: Retrieves audit records.

URL: `/api/fmc_config/v1/domain/{domain_UUID}/audit/auditrecords`

URL for GET by ID: `/api/fmc_config/v1/domain/{domain_UUID}/audit/auditrecords/{objectID}`

Permissions: System > Monitoring > Audit

Parameters available for filtering: username, subsystem, source, starttime, endtime

# Deployment Services

## GET deployabledevices

Request Type: **GET**

Description: Retrieves list of all devices with configuration changes, ready to be deployed.

URL: `/api/fmc_config/v1/domain/{domain_UUID}/deployment/deployabledevices`

Permissions: Deploy Configuration to Devices

Parameters available for filtering: name

## POST deploymentrequests

Request Type: **POST**

Description: Creates a request for deploying configuration changes to the specified device.

URL: `/api/fmc_config/v1/domain/{domain_UUID}/deployment/deploymentrequests/{object_UUID}`

Permissions: Deploy Configuration to Devices

# Device Group Services

## DELETE devicegrouprecords

Request Type: **DELETE**

Description: Deletes a device group with the specified object ID.

URL: `/api/fmc_config/v1/domain/{domain_UUID}/devicegroups/devicegrouprecords/{object_UUID}`

Permissions: Devices > Device Management > Modify Devices

## PUT devicegrouprecords

Request Type: **PUT**

Description: Modifies a device group with the specified object ID.

URL: `/api/fmc_config/v1/domain/{domain_UUID}/devicegroups/devicegrouprecords/{object_UUID}`

Permissions: Devices > Device Management > Modify Devices

## POST devicegrouprecords

Request Type: **POST**

Description: Creates a device group with the specified object ID.

URL: /api/fmc\_config/v1/domain/{domain\_UUID}/devicegroups/devicegrouprecords

Permissions: Devices > Device Management > Modify Devices

## GET devicegrouprecords

Request Type: **GET**

Description: Retrieves the device group associated with the specified ID. If no ID is specified, retrieves list of all device groups.

URL: /api/fmc\_config/v1/domain/{domain\_UUID}/devicegroups/devicegrouprecords

URL for GET by ID:

/api/fmc\_config/v1/domain/{domain\_UUID}/devicegroups/devicegrouprecords/{object\_UUID}

Permissions: Devices > Device Management > View Devices

## Device HA Pair Services

### DELETE ftddevicehapair

Request Type: **DELETE**

Description: Deletes a device high availability pair with the specified object ID.

URL: /api/fmc\_config/v1/domain/{domain\_UUID}/devicehapairs/ftddevicehapairs/{object\_UUID}

Permissions: Devices > Device Management > Modify Devices



#### Note

Run the *configure high-availability disable* command to remove the failover configurations from FTD devices.

### PUT ftddevicehapair

Request Type: **PUT**

Description: Sets any one of the following actions for the Firepower Threat Defense high availability device:

- Sets the failover trigger criteria for the device
- Switches states within the device
- Breaks or force-breaks the device

URL:

/api/fmc\_config/v1/domain/{domain\_UUID}/devicehapairs/ftddevicehapairs/{ha\_container\_UUID}

Permissions: Devices > Device Management > Modify Devices

## POST ftddevicehapairs

Request Type: **POST**

Description: Creates a high availability device pair with the specified primary and secondary object IDs. Do not perform the POST operation for more than one high availability pair at a time. Ensure that the current POST operation is completed successfully before proceeding to the next POST operation.

**Note**

Typically, the first POST operation responds within 60 seconds. Cisco recommends that you perform subsequent POST operations at least 120 seconds after the first POST operation was initiated. The response of the POST operation includes a task object, with a task ID and task status. You can monitor the completion of the task by performing a GET operation on the task object with its task ID. For more information, see [GET taskstatuses, on page 57](#).

URL: `/api/fmc_config/v1/domain/{domain_UUID}/devicehapairs/ftddevicehapairs`

Permissions: Devices > Device Management > Modify Devices

## GET ftddevicehapairs

Request Type: **GET**

Description: Retrieves the details associated with the specified high availability container ID. If no ID is specified, retrieves a list of all high availability container objects.

URL: `/api/fmc_config/v1/domain/{domain_UUID}/devicehapairs/ftddevicehapairs`

URL for GET by ID:

`/api/fmc_config/v1/domain/{domain_UUID}/devicehapairs/ftddevicehapairs/{ha_container_UUID}`

Permissions: Devices > Device Management > Modify Devices

## Device Services

### POST copyconfigrequests

Request Type: **POST**

Description: Copies device configuration to the specified Firepower Threat Defense device.

URL: `/api/fmc_config/v1/domain/{domain_UUID}/devices/copyconfigrequests`

Permissions: Devices > Device Management > Modify Devices

### DELETE devicerecords

Request Type: **DELETE**

Description: Unregisters the specified device.

URL: `/api/fmc_config/v1/domain/{domain_UUID}/devices/devicerecords/{object_UUID}`

Permissions: Devices > Device Management > Modify Devices

## PUT devicerecords

Request Type: **PUT**

Description: Modifies the device record associated with the specified ID.

URL: /api/fmc\_config/v1/domain/{domain\_UUID}/devices/devicerecords/{object\_UUID}

Permissions: Devices > Device Management > Modify Devices

## POST devicerecords

Request Type: **POST**

Description: Registers the specified device to the Firepower Management Center.

URL: /api/fmc\_config/v1/domain/{domain\_UUID}/devices/devicerecords

Permissions: Devices > Device Management > Modify Devices

## GET devicerecords

Request Type: **GET**

Description: Retrieves device information. If a device ID is specified, the information for the specified device is retrieved. If no ID is specified, retrieves information for all devices.

URL: /api/fmc\_config/v1/domain/{domain\_UUID}/devices/devicerecords

URL for GET by ID: /api/fmc\_config/v1/domain/{domain\_UUID}/devices/devicerecords/{object\_UUID}

Permissions: Devices > Device Management

Parameters available for filtering: hostName

## PUT fpphysicalinterfaces

Request Type: **PUT**

Description: Modifies a physical interface on the specified device.

URL:

/api/fmc\_config/v1/domain/{domain\_UUID}/devices/devicerecords/{containerUUID}/fpphysicalinterfaces/{object\_UUID}

Permissions: Devices > Device Management > Modify Device

## GET fpphysicalinterfaces

Request Type: **GET**

Description: Retrieves information on the physical interface associated with the specified NGIPS device ID and interface ID. If no ID is specified, retrieves list of all physical interfaces associated with the specified NGIPS device ID.

URL:

/api/fmc\_config/v1/domain/{domain\_UUID}/devices/devicerecords/{container\_UUID}/fpphysicalinterfaces

URL for GET by ID:

/api/fmc\_config/v1/domain/{domain\_UUID}/devices/devicerecords/{container\_UUID}/fpphysicalinterfaces/{object\_UUID}

Permissions: Devices > Device Management

Parameters available for filtering: name

## DELETE fplogicalinterfaces

Request Type: **DELETE**

Description: Deletes logical interfaces on the specified device.

URL: /api/fmc\_config/v1/domain/{domain\_UUID}/devices/devicerecords/{container\_UUID}/fplogicalinterfaces/{object\_UUID}

Permissions: Devices > Device Management > Modify Device

## PUT fplogicalinterfaces

Request Type: **PUT**

Description: Modifies a logical interface on the specified device.

URL:

/api/fmc\_config/v1/domain/{domain\_UUID}/devices/devicerecords/{container\_UUID}/fplogicalinterfaces/{object\_UUID}

Permissions: Devices > Device Management > Modify Device

## POST fplogicalinterfaces

Request Type: **POST**

Description: Creates logical interfaces on the specified device.

URL:

/api/fmc\_config/v1/domain/{domain\_UUID}/devices/devicerecords/{container\_UUID}/fplogicalinterfaces

Permissions: Devices > Device Management > Modify Device

## GET fplogicalinterfaces

Request Type: **GET**

Description: Retrieves the logical interface associated with the specified NGIPS device ID and interface ID. If no ID is specified, retrieves list of all logical interfaces associated with the specified NGIPS device ID.

URL:

/api/fmc\_config/v1/domain/{domain\_UUID}/devices/devicerecords/{container\_UUID}/fplogicalinterfaces

URL for GET by ID:

/api/fmc\_config/v1/domain/{domain\_UUID}/devices/devicerecords/{container\_UUID}/fplogicalinterfaces/{object\_UUID}

Permissions: Devices > Device Management

Parameters available for filtering: name

## DELETE inlinesets

Request Type: **DELETE**

Description: Deletes inline sets on the specified device.

URL:

/api/fmc\_config/v1/domain/{domain\_UUID}/devices/devicerecords/{containerUUID}/inlinesets/{object\_UUID}

Permissions: Devices > Device Management > Modify Device

## PUT inlinesets

Request Type: **PUT**

Description: Modifies an inline set on the specified device.

URL:

/api/fmc\_config/v1/domain/{domain\_UUID}/devices/devicerecords/{container\_UUID}/inlinesets/{object\_UUID}

Permissions: Devices > Device Management > Modify Device

## POST inlinesets

Request Type: **POST**

Description: Creates inline sets on the specified device.

URL: /api/fmc\_config/v1/domain/{domain\_UUID}/devices/devicerecords/{container\_UUID}/inlinesets

Permissions: Devices > Device Management > Modify Device

## GET inlinesets

Request Type: **GET**

Description: Retrieves information on the inline set associated with the specified NGIPS device ID and inline set ID. If no inline set ID is specified, retrieves list of all inline sets associated with the specified NGIPS device ID.

URL: /api/fmc\_config/v1/domain/{domain\_UUID}/devices/devicerecords/{container\_UUID}/inlinesets

URL for GET by ID:

/api/fmc\_config/v1/domain/{domain\_UUID}/devices/devicerecords/{container\_UUID}/inlinesets/{object\_UUID}

Permissions: Devices > Device Management

Parameters available for filtering: name

## GET staticroutes

Request Type: **GET**

Description: Retrieves list of all IPv4 and IPv6 Static Routes associated with the specified device.



URL:

/api/fmc\_config/v1/domain/{domainUUID}/devices/devicerecords/{containerUUID}/routing/staticroutes

URL for GET ID::

/api/fmc\_config/v1/domain/{domainUUID}/devices/devicerecords/{containerUUID}/routing/staticroutes/{object\_UUID}

Permissions: Devices > Devices Management

## DELETE ipv4staticroutes

Request Type: **DELETE**

Description: Deletes the IPv4 Static Route associated with the specified ID.

URL:

/api/fmc\_config/v1/domain/{domainUUID}/devices/devicerecords/{containerUUID}/routing/ipv4staticroutes/{object\_UUID}

Permissions: Devices > Devices Management > Modify Devices

## PUT ipv4staticroutes

Request Type: **PUT**

Description: Modifies the IPv4 Static Route associated with the specified ID.

URL:

/api/fmc\_config/v1/domain/{domainUUID}/devices/devicerecords/{containerUUID}/routing/ipv4staticroutes/{object\_UUID}

Permissions: Devices > Devices Management > Modify Devices

## POST ipv4staticroutes

Request Type: **POST**

Description: Creates an IPv4 Static Route.

URL:

/api/fmc\_config/v1/domain/{domainUUID}/devices/devicerecords/{containerUUID}/routing/ipv4staticroutes

Permissions: Devices > Device Management > Modify Devices

## GET ipv4staticroutes

Request Type: **GET**

Description: Retrieves the IPv4 Static Route associated with the specified ID. If no ID is specified, retrieves list of all IPv4 Static Routes.

URL:

/api/fmc\_config/v1/domain/{domainUUID}/devices/devicerecords/{containerUUID}/routing/ipv4staticroutes

URL for GET ID::

/api/fmc\_config/v1/domain/{domainUUID}/devices/devicerecords/{containerUUID}/routing/ipv4staticroutes/{object\_UUID}

Permissions: Devices > Devices Management

## DELETE ipv6staticroutes

Request Type: **DELETE**

Description: Deletes the IPv6 Static Route associated with the specified ID.

URL:

/api/fmc\_config/v1/domain/{domainUUID}/devices/devicerecords/{containerUUID}/routing/ipv6staticroutes/{object\_UUID}

Permissions: Devices > Device Management > Modify Devices

## PUT ipv6staticroutes

Request Type: **PUT**

Description: Modifies the IPv6 Static Route associated with the specified ID.

URL:

/api/fmc\_config/v1/domain/{domainUUID}/devices/devicerecords/{containerUUID}/routing/ipv6staticroutes/{object\_UUID}

Permissions: Devices > Device Management > Modify Devices

## POST ipv6staticroutes

Request Type: **POST**

Description: Creates an IPv6 Static Route.

URL:

/api/fmc\_config/v1/domain/{domainUUID}/devices/devicerecords/{containerUUID}/routing/ipv6staticroutes

Permissions: Devices > Device Management > Modify Devices

## GET ipv6staticroutes

Request Type: **GET**

Description: Retrieves the IPv6 Static Route associated with the specified ID. If no ID is specified, retrieves list of all IPv6 Static Routes.

URL:

/api/fmc\_config/v1/domain/{domainUUID}/devices/devicerecords/{containerUUID}/routing/ipv6staticroutes

URL for GET ID:

/api/fmc\_config/v1/domain/{domainUUID}/devices/devicerecords/{containerUUID}/routing/ipv6staticroutes/{object\_UUID}

Permissions: Devices > Device Management

## DELETE virtualswitches

Request Type: **DELETE**

Description: Deletes a virtual switch on the specified device.

**This method is only available on a Firepower 1010 device.**

URL:

/api/fmc\_config/v1/domain/{domain\_UUID}/devices/devicerecords/{containerUUID}/virtualswitches/{object\_UUID}

Permissions: Devices > Device Management > Modify Device

## PUT virtualswitches

Request Type: **PUT**

Description: Modifies a virtual switch on the specified device.

**This method is only available on a Firepower 1010 device.**

URL:

/api/fmc\_config/v1/domain/{UUID}/devices/devicerecords/{containerUUID}/virtualswitches/{object\_UUID}

Permissions: Devices > Device Management > Modify Device

## POST virtualswitches

Request Type: **POST**

Description: Creates a virtual switch on the specified device.

**This method is only available on a Firepower 1010 device.**

URL:

/api/fmc\_config/v1/domain/{domain\_UUID}/devices/devicerecords/{container\_UUID}/virtualswitches

Permissions: Devices > Device Management > Modify Device

## GET virtualswitches

Request Type: **GET**

Description: Retrieves virtual switch associated with the specified NGIPS device ID and virtual switch ID. If no virtual switch ID is specified, retrieves list of all virtual switches associated with the specified NGIPS device ID.

**This method is only available on a Firepower 1010 device.**

URL: /api/fmc\_config/v1/domain/{domain\_UUID}/devices/devicerecords/{containerUUID}/virtualswitches

URL for GET by ID:

/api/fmc\_config/v1/domain/{domain\_UUID}/devices/devicerecords/{containerUUID}/virtualswitches/{object\_UUID}

Permissions: Devices > Device Management

Parameters available for filtering: name

## PUT fpphysicalinterfaces

Request Type: **PUT**

Description: Modifies a physical interface on the specified device.

URL:

/api/fmc\_config/v1/domain/{domain\_UUID}/devices/devicerecords/{containerUUID}/fpphysicalinterfaces/{object\_UUID}

Permissions: Devices > Device Management > Modify Device

## GET fpphysicalinterfaces

Request Type: **GET**

Description: Retrieves information on the physical interface associated with the specified NGIPS device ID and interface ID. If no ID is specified, retrieves list of all physical interfaces associated with the specified NGIPS device ID.

URL:

/api/fmc\_config/v1/domain/{domain\_UUID}/devices/devicerecords/{container\_UUID}/fpphysicalinterfaces

URL for GET by ID:

/api/fmc\_config/v1/domain/{domain\_UUID}/devices/devicerecords/{container\_UUID}/fpphysicalinterfaces/{object\_UUID}

Permissions: Devices > Device Management

Parameters available for filtering: name

## PUT physicalinterfaces

Request Type: **PUT**

Description: Modifies physical interfaces on a specified device.

URL: /api/fmc\_config/v1/domain/{domain\_UUID}/devices/devicerecords/{container\_UUID}/physicalinterfaces

Permissions: Devices > Device Management > Modify Device

## GET physicalinterfaces

Request Type: **GET**

Description: Retrieves the physical interface associated with the specified NGFW device ID and interface ID. If no interface ID is specified, retrieves list of all physical interfaces associated with the specified NGFW device ID.

URL:

/api/fmc\_config/v1/domain/{domain\_UUID}/devices/devicerecords/{container\_UUID}/physicalinterfaces

URL for GET by ID:

/api/fmc\_config/v1/domain/{domain\_UUID}/devices/devicerecords/{container\_UUID}/physicalinterfaces/{object\_UUID}

Permissions: Devices > Device Management

## GET bridgegroupinterfaces

Request Type: **GET**

Description: Retrieves the bridge group interface associated with the specified NGFW device ID and interface ID. If no interface ID is specified, retrieves list of all bridge group interfaces associated with the specified NGFW device ID.

URL:

/api/fmc\_config/v1/domain/{domain\_UUID}/devices/devicerecords/{container\_UUID}/bridgegroupinterfaces

URL for GET by ID:

/api/fmc\_config/v1/domain/{domain\_UUID}/devices/devicerecords/{container\_UUID}/bridgegroupinterfaces/{object\_UUID}

Permissions: Devices > Device Management

## POST bridgegroupinterfaces

Request Type: **POST**

Description: Creates bridge group interfaces associated with the specified NGFW device ID and interface ID.

URL:

/api/fmc\_config/v1/domain/{domain\_UUID}/devices/devicerecords/{container\_UUID}/bridgegroupinterfaces

Permissions: Devices > Device Management > Modify Device

## PUT bridgegroupinterfaces

Request Type: **PUT**

Description: Modifies a bridge group interface on the specified device.

URL:

/api/fmc\_config/v1/domain/{domain\_UUID}/devices/devicerecords/{container\_UUID}/bridgegroupinterfaces

Permissions: Devices > Device Management > Modify Device

## DELETE bridgegroupinterfaces

Request Type: **DELETE**

Description: Deletes a bridge group interface associated with the specified NGFW device ID and interface ID.

URL:

/api/fmc\_config/v1/domain/{domain\_UUID}/devices/devicerecords/{container\_UUID}/bridgegroupinterfaces

Permissions: Devices > Device Management > Modify Device

## GET redundantinterfaces

Request Type: **GET**

Description: Retrieves the redundant interface associated with the specified NGFW device ID and interface ID. If no interface ID is specified, retrieves list of all redundant interfaces associated with the specified NGFW device ID.

URL:

/api/fmc\_config/v1/domain/{domain\_UUID}/devices/devicerecords/{container\_UUID}/redundantinterfaces

URL for GET by ID:

/api/fmc\_config/v1/domain/{domain\_UUID}/devices/devicerecords/{container\_UUID}/redundantinterfaces/{object\_UUID}

Permissions: Devices > Device Management

## POST redundantinterfaces

Request Type: **POST**

Description: Creates redundant interfaces on a specified device.

URL:

/api/fmc\_config/v1/domain/{domain\_UUID}/devices/devicerecords/{container\_UUID}/redundantinterfaces

Permissions: Devices > Device Management

## PUT redundantinterfaces

Request Type: **PUT**

Description: Modifies redundant interfaces on a specified device.

URL:

/api/fmc\_config/v1/domain/{domain\_UUID}/devices/devicerecords/{container\_UUID}/redundantinterfaces

Permissions: Devices > Device Management > Modify Device

## DELETE redundantinterfaces

Request Type: **DELETE**

Description: Removes redundant interfaces on a specified device.

URL:

/api/fmc\_config/v1/domain/{domain\_UUID}/devices/devicerecords/{container\_UUID}/redundantinterfaces

Permissions: Devices > Device Management

## GET etherchannelinterfaces

Request Type: **GET**

Description: Retrieves the ethernet channel interface associated with the specified NGFW device ID and interface ID. If no ID is specified, retrieves list of all ethernet channel interfaces associated with the specified NGFW device ID.

URL:

/api/fmc\_config/v1/domain/{domain\_UUID}/devices/devicerecords/{container\_UUID}/etherchannelinterfaces

URL for GET by ID:

/api/fmc\_config/v1/domain/{domain\_UUID}/devices/devicerecords/{container\_UUID}/etherchannelinterfaces/{object\_UUID}

Permissions: Devices > Device Management

Parameters available for filtering:

## POST etherchannelinterfaces

Request Type: **POST**

Description: Creates ethernet channel interfaces on the specified device.

URL:

/api/fmc\_config/v1/domain/{domain\_UUID}/devices/devicerecords/{container\_UUID}/ethernetchannelinterfaces

Permissions: Devices > Device Management > Modify Device

## PUT etherchannelinterfaces

Request Type: **PUT**

Description: Modifies an ethernet channel interfaces on the specified device.

URL:

/api/fmc\_config/v1/domain/{domain\_UUID}/devices/devicerecords/{containerUUID}/ethernetchannelinterfaces/

Permissions: Devices > Device Management > Modify Device

## DELETE etherchannelinterfaces

Request Type: **DELETE**

Description: Removes ethernet channel interfaces from a specified device.

URL:

/api/fmc\_config/v1/domain/{domain\_UUID}/devices/devicerecords/{container\_UUID}/ethernetchannelinterfaces

Permissions: Devices > Device Management

## GET subinterfaces

Request Type: **GET**

Description: Retrieves the sub-interface associated with the specified NGFW device ID and interface ID. If no interface ID is specified, retrieves list of all sub-interfaces associated with the specified NGFW device ID.

URL:

/api/fmc\_config/v1/domain/{domain\_UUID}/devices/devicerecords/{container\_UUID}/subinterfaces

URL for GET by ID:

/api/fmc\_config/v1/domain/{domain\_UUID}/devices/devicerecords/{container\_UUID}/subinterfaces/{object\_UUID}

Permissions: Devices > Device Management

## POST subinterfaces

Request Type: **POST**

Description: Creates sub interfaces on a specified device.

URL:

/api/fmc\_config/v1/domain/{domain\_UUID}/devices/devicerecords/{container\_UUID}/subinterfaces

Permissions: Devices > Device Management

## PUT subinterfaces

Request Type: **PUT**

Description: Modifies a sub interface on the specified device.

URL:

`/api/fmc_config/v1/domain/{domain_UUID}/devices/devicerecords/{container_UUID}/subinterfaces/`

Permissions: Devices > Device Management > Modify Device

## DELETE subinterfaces

Request Type: **DELETE**

Description: Deletes sub interfaces on a specified device.

URL:

`/api/fmc_config/v1/domain/{domain_UUID}/devices/devicerecords/{container_UUID}/subinterfaces`

Permissions: Devices > Device Management

## GET fpinterfacestatistics

Request Type: **GET**

Description: Retrieves list of statistics for all interfaces associated with the specified NGIPS device ID.

URL: `/api/fmc_config/v1/domain/{domain_UUID}/devices/devicerecords/{container_UUID}/fpinterfacestatistics`

Permissions: Devices > Device Management

Parameters available for filtering: name

# Intelligence Services

## POST collections

Request Type: **POST**

Description: Adds a collections from a TAXII source.

URL: `/api/fmc_tid/v1/domain/{domain_UUID}/taxiiconfig/collections`

Permissions: Intelligence

## POST discoveryinfo

Request Type: **POST**



Description: Adds information about TAXII collections available from a source.

URL: `/api/fmc_tid/v1/domain/{domain_UUID}/taxiiconfig/discoveryinfo`

Permissions: Intelligence

## GET element

Request Type: **GET**

Description: Retrieves the intelligence-enabled sensor associated with the specified ID. If no ID is specified, retrieves list of all intelligence-enabled sensors.

URL: `/api/fmc_tid/v1/domain/{domain_UUID}/tid/element`

URL for GET by ID: `/api/fmc_tid/v1/domain/{domain_UUID}/tid/element/{object_UUID}`

Permissions: Intelligence

## DELETE incident

Request Type: **DELETE**

Description: Deletes an incident.

URL: `/api/fmc_tid/v1/domain/{domain_UUID}/taxiiconfig/incident/{object_UUID}`

Permissions: Intelligence

## PUT incident

Request Type: **PUT**

Description: Modifies an intelligence incident with the specified object ID.

URL: `/api/fmc_tid/v1/domain/{domain_UUID}/tid/incident/{object_UUID}`

Permissions: Intelligence

## GET incident

Request Type: **GET**

Description: Retrieves the intelligence incident associated with the specified ID. If no ID is specified, retrieves list of all intelligence incidents. By default 25 results will be displayed on each page, this can be increased up to 40 using the `limit` parameter.

URL: `/api/fmc_tid/v1/domain/{domain_UUID}/tid/incident`

URL for GET by ID: `/api/fmc_tid/v1/domain/{domain_UUID}/tid/incident/{object_UUID}`

Permissions: Intelligence

## PUT indicator

Request Type: **PUT**

Description: Modifies an indicator with the specified object ID.

URL: `/api/fmc_tid/v1/domain/{domain_UUID}/tid/indicator/{object_UUID}`

Permissions: Intelligence

## GET indicator

Request Type: **GET**

Description: Retrieves the indicator associated with the specified ID. If no ID is specified, retrieves list of all indicators. By default 25 results will be displayed on each page, this can be increased up to 40 using the `limit` parameter.

URL: `/api/fmc_tid/v1/domain/{domain_UUID}/tid/indicator`

URL for GET by ID: `/api/fmc_tid/v1/domain/{domain_UUID}/tid/indicator/{object_UUID}`

Permissions: Intelligence

## PUT observable

Request Type: **PUT**

Description: Modifies an observable with the specified object ID.

URL: `/api/fmc_tid/v1/domain/{domain_UUID}/tid/observable/{object_UUID}`

Permissions: Intelligence

## GET observable

Request Type: **GET**

Description: Retrieves the observable associated with the specified ID. If no ID is specified, retrieves list of all observables. By default 25 results will be displayed on each page, this can be increased up to 40 using the `limit` parameter.

URL: `/api/fmc_tid/v1/domain/{domain_UUID}/tid/observable`

URL for GET by ID: `/api/fmc_tid/v1/domain/{domain_UUID}/tid/observable/{object_UUID}`

Permissions: Intelligence

## PUT settings

Request Type: **PUT**

Description: Activates or deactivates an intelligence setting.

URL: `/api/fmc_tid/v1/domain/{domain_UUID}/tid/settings/{value}`

Permissions: Intelligence

## GET settings

Request Type: **GET**

Description: Retrieves the on/off settings for the specified value. If no ID is specified, retrieves list of all TID settings.

URL: `/api/fmc_tid/v1/domain/{domain_UUID}/tid/settings`

URL for GET by value: `/api/fmc_tid/v1/domain/{domain_UUID}/tid/settings/{value}`

Permissions: Intelligence

## DELETE source

Request Type: **DELETE**

Description: Deletes an intelligence source from the device.

URL: `/api/fmc_tid/v1/domain/{domain_UUID}/taxiiconfig/source/{object_UUID}`

Permissions: Intelligence

## PUT source

Request Type: **PUT**

Description: Modifies an intelligence source with the specified object ID.

URL: `/api/fmc_tid/v1/domain/{domain_UUID}/tid/source/{object_UUID}`

Permissions: Intelligence

## POST source

Request Type: **POST**

Description: Adds a source for intelligence information.

URL: `/api/fmc_tid/v1/domain/{domain_UUID}/tid/source`

Permissions: Intelligence

## GET source

Request Type: **GET**

Description: Retrieves the intelligence source associated with the specified ID. If no ID is specified, retrieves list of all intelligence sources. By default 25 results will be displayed on each page, this can be increased up to 40 using the `limit` parameter.

URL: `/api/fmc_tid/v1/domain/{domain_UUID}/tid/source`

URL for GET by ID: `/api/fmc_tid/v1/domain/{domain_UUID}/tid/source/{object_UUID}`

Permissions: Intelligence

# Object Services

## GET anyprotocolportobjects

Request Type: **GET**

Description: Retrieves the any protocol port object associated with the specified ID. If no ID is specified, retrieves list of all protocol port objects with the protocol set to All.

URL: `/api/fmc_config/v1/domain/{domain_UUID}/object/anyprotocolportobjects`

URL for GET by ID:

`/api/fmc_config/v1/domain/{domain_UUID}/object/anyprotocolportobjects/{object_UUID}`

Permissions: Object Manager

## GET applicationcategories

Request Type: **GET**

Description: Retrieves the application category object associated with the specified ID. If no ID is specified, retrieves list of all application category objects.

URL: `/api/fmc_config/v1/domain/{domain_UUID}/object/applicationcategories`

URL for GET by ID:

`/api/fmc_config/v1/domain/{domain_UUID}/object/applicationcategories/{object_UUID}`

Permissions: Object Manager

## GET applicationfilters

Request Type: **GET**

Description: Retrieves the application filter object associated with the specified ID. If no ID is specified, retrieves list of all application filter objects.

URL: `/api/fmc_config/v1/domain/{domain_UUID}/object/applicationfilters`

URL for GET by ID:

`/api/fmc_config/v1/domain/{domain_UUID}/object/applicationfilters/{object_UUID}`

Permissions: Object Manager

## GET applicationproductivities

Request Type: **GET**

Description: Retrieves the application productivity object associated with the specified ID. If no ID is specified, retrieves list of all application productivity objects.

URL: `/api/fmc_config/v1/domain/{domain_UUID}/object/applicationproductivities`

URL for GET by ID:

/api/fmc\_config/v1/domain/{domain\_UUID}/object/applicationproductivities/{object\_UUID}

Permissions: Object Manager

## GET applicationrisks

Request Type: **GET**

Description: Retrieves the application risk object associated with the specified ID. If no ID is specified, retrieves list of all application risk objects.

URL: /api/fmc\_config/v1/domain/{domain\_UUID}/object/applicationrisks

URL for GET by ID:

/api/fmc\_config/v1/domain/{domain\_UUID}/object/applicationrisks/{object\_UUID}

Permissions: Object Manager

## GET applications

Request Type: **GET**

Description: Retrieves the application object associated with the specified ID. If no ID is specified, retrieves list of all application objects.

URL: /api/fmc\_config/v1/domain/{domain\_UUID}/object/applications

URL for GET by ID: /api/fmc\_config/v1/domain/{domain\_UUID}/object/applications/{object\_UUID}

Permissions: Object Manager

## GET applicationtags

Request Type: **GET**

Description: Retrieves the application tag object associated with the specified ID. If no ID is specified, retrieves list of all application tag objects.

URL: /api/fmc\_config/v1/domain/{domain\_UUID}/object/applicationtags

URL for GET by ID: /api/fmc\_config/v1/domain/{domain\_UUID}/object/applicationtags/{object\_UUID}

Permissions: Object Manager

## GET applicationtypes

Request Type: **GET**

Description: Retrieves the application type object associated with the specified ID. If no ID is specified, retrieves list of all application type objects.

URL: /api/fmc\_config/v1/domain/{domain\_UUID}/object/applicationtypes

URL for GET by ID:

/api/fmc\_config/v1/domain/{domain\_UUID}/object/applicationtypes/{object\_UUID}

Permissions: Object Manager

## GET continents

Request Type: **GET**

Description: Retrieves the continent object associated with the specified ID. If no ID is specified, retrieves list of all continent objects.

URL: `/api/fmc_config/v1/domain/{domain_UUID}/object/continents`

URL for GET by ID: `/api/fmc_config/v1/domain/{domain_UUID}/object/continents/{object_UUID}`

Permissions: Object Manager

## GET countries

Request Type: **GET**

Description: Retrieves the country object associated with the specified ID. If no ID is specified, retrieves list of all country objects.

URL: `/api/fmc_config/v1/domain/{domain_UUID}/object/countries`

URL for GET by ID: `/api/fmc_config/v1/domain/{domain_UUID}/object/countries/{object_UUID}`

Permissions: Object Manager

## GET endpointdevicetypes

Request Type: **GET**

Description: Retrieves the endpoint device type object associated with the specified ID. If no ID is specified, retrieves list of all endpoint device type objects.

URL: `/api/fmc_config/v1/domain/{domain_UUID}/object/endpointdevicetypes`

URL for GET by ID:

`/api/fmc_config/v1/domain/{domain_UUID}/object/endpointdevicetypes/{object_UUID}`

Permissions: Object Manager

## GET geolocation

Request Type: **GET**

Description: Retrieves the geolocation object associated with the specified ID. If no ID is specified, retrieves list of all geolocation objects.

URL: `/api/fmc_config/v1/domain/{domain_UUID}/object/geolocations`

URL for GET by ID: `/api/fmc_config/v1/domain/{domain_UUID}/object/geolocations/{object_UUID}`

Permissions: Object Manager

## DELETE hosts

Request Type: **DELETE**

Description: Deletes the specified host object.

URL: `/api/fmc_config/v1/domain/{domain_UUID}/object/hosts/{object_UUID}`

Permissions: Object Manager > Modify Object Manager

## PUT hosts

Request Type: **PUT**

Description: Modifies a host object.

URL: `/api/fmc_config/v1/domain/{domain_UUID}/object/hosts/{object_UUID}`

Permissions: Object Manager > Modify Object Manager

## POST hosts

Request Type: **POST**

Description: Creates or overrides the host objects with the specified parameters.

URL: `/api/fmc_config/v1/domain/{domain_UUID}/object/hosts`

URL for Bulk Post: `/api/fmc_config/v1/domain/{domain_UUID}/object/hosts?bulk=true`

Permissions: Object Manager > Modify Object Manager

## GET hosts

Request Type: **GET**

Description: Retrieves the host object associated with the specified ID. If no ID is specified, retrieves list of all host objects.

URL for listing: `/api/fmc_config/v1/domain/{domain_UUID}/object/hosts`

URL for GET by ID: `/api/fmc_config/v1/domain/{domain_UUID}/object/hosts/{object_UUID}`

Permissions: Object Manager

## DELETE icmpv4objects

Request Type: **DELETE**

Description: Deletes the specified ICMPv4 port.

URL: `/api/fmc_config/v1/domain/{domain_UUID}/object/icmpv4objects/{object_UUID}`

Permissions: Object Manager > Modify Object Manager

## PUT icmpv4objects

Request Type: **PUT**

Description: Modifies ICMPv4 port objects.

URL: /api/fmc\_config/v1/domain/{domain\_UUID}/object/icmpv4objects/{object\_UUID}

Permissions: Object Manager > Modify Object Manager

## POST icmpv4objects

Request Type: **POST**

Description: Creates or overrides the ICMPv4 port objects with the specified parameters.

URL: /api/fmc\_config/v1/domain/{domain\_UUID}/object/icmpv4objects

Permissions: Object Manager > Modify Object Manager

## GET icmpv4objects

Request Type: **GET**

Description: Retrieves the ICMPv4 object associated with the specified ID. If no ID, retrieves list of all ICMPv4 objects.

URL for listing: /api/fmc\_config/v1/domain/{domain\_UUID}/object/icmpv4objects

URL for GET by ID: /api/fmc\_config/v1/domain/{domain\_UUID}/object/icmpv4objects/{object\_UUID}

Permissions: Object Manager

## DELETE icmpv6objects

Request Type: **DELETE**

Description: Deletes the specified ICMPv6 port objects.

URL: /api/fmc\_config/v1/domain/{domain\_UUID}/object/icmpv6objects/{object\_UUID}

Permissions: Object Manager > Modify Object Manager

## PUT icmpv6objects

Request Type: **PUT**

Description: Modifies ICMPv6 port objects.

URL: /api/fmc\_config/v1/domain/{domain\_UUID}/object/icmpv6objects/{object\_UUID}

Permissions: Object Manager > Modify Object Manager

## POST icmpv6objects

Request Type: **POST**



Description: Creates or overrides the ICMPv6 port objects with the specified parameters.

URL: `/api/fmc_config/v1/domain/{domain_UUID}/object/icmpv6objects`

Permissions: Object Manager > Modify Object Manager

## GET icmpv6objects

Request Type: **GET**

Description: Retrieves the ICMPv6 object associated with the specified ID. If no ID is specified, retrieves list of all ICMPv6 objects.

URL for listing: `/api/fmc_config/v1/domain/{domain_UUID}/object/icmpv6objects`

URL for GET by ID: `/api/fmc_config/v1/domain/{domain_UUID}/object/icmpv6objects/{object_UUID}`

URL to list all overrides on a particular object:

`/api/fmc_config/v1/domain/{domain_UUID}/object/icmp6objects/{icmpv6object_UUID}/overrides`

Permissions: Object Manager

## GET isecuritygroupstags

Request Type: **GET**

Description: Retrieves the ISE security group tag object with the specified ID. If no ID is specified, retrieves list of all ISE security group tag objects.

URL: `/api/fmc_config/v1/domain/{domain_UUID}/object/isecuritygroupstags`

URL for GET by ID:

`/api/fmc_config/v1/domain/{domain_UUID}/object/isecuritygroupstags/{object_UUID}`

Permissions: Object Manager

## GET networkaddresses

Request Type: **GET**

Description: Retrieves list of all network and host objects.

URL: `/api/fmc_config/v1/domain/{domain_UUID}/object/networkaddresses`

Permissions: Object Manager

## DELETE networkgroups

Request Type: **DELETE**

Description: Deletes the specified Network Group.

URL: `/api/fmc_config/v1/domain/{domain_UUID}/object/networkgroups/{object_UUID}`

URL to DELETE overrides on a particular object:

`/api/fmc_config/v1/domain/{domain_UUID}/object/networkgroups/{object_UUID}?overrideTargetId={target_UUID}`

Permissions: Object Manager > Modify Object Manager

## PUT networkgroups

Request Type: **PUT**

Description: Modifies a Network Group.

URL: `/api/fmc_config/v1/domain/{domain_UUID}/object/networkgroups/{object_UUID}`

Permissions: Object Manager > Modify Object Manager

## POST networkgroups

Request Type: **POST**

Description: Creates or overrides the network group with the specified parameters.

URL: `/api/fmc_config/v1/domain/{domain_UUID}/object/networkgroups`

Permissions: Object Manager > Modify Object Manager

## GET networkgroups

Request Type: **GET**

Description: Retrieves the network group object associated with the specified ID. If no ID is specified, retrieves list of all network group objects.

URL for listing: `/api/fmc_config/v1/domain/{domain_UUID}/object/networkgroups`

URL for all the overrides on a particular domain or device:

`/api/fmc_config/v1/domain/{domain_UUID}/object/networkgroups?overrideTargetId={target_UUID}`

URL for GET by ID: `/api/fmc_config/v1/domain/{domain_UUID}/object/networkgroups/{object_UUID}`

Permissions: Object Manager

## DELETE networks

Request Type: **DELETE**

Description: Deletes the specified network objects.

URL: `/api/fmc_config/v1/domain/{domain_UUID}/object/networks/{object_UUID}`

URL to DELETE overrides on a particular object:

`/api/fmc_config/v1/domain/{domain_UUID}/object/networks/{object_UUID}?overrideTargetId={target_UUID}`

Permissions: Object Manager > Modify Object Manager

## PUT networks

Request Type: **PUT**

Description: Modifies network objects.

URL: `/api/fmc_config/v1/domain/{domain_UUID}/object/networks/{object_UUID}`

Permissions: Object Manager > Modify Object Manager

## POST networks

Request Type: **POST**

Description: Creates or overrides the network objects with the specified parameters.

URL: `/api/fmc_config/v1/domain/{domain_UUID}/object/networks`

URL for Bulk Post: `/api/fmc_config/v1/domain/{domain_UUID}/object/networks?bulk=true`

Permissions: Object Manager > Modify Object Manager

## GET networks

Request Type: **GET**

Description: Retrieves the network objects associated with the specified ID. If no ID is specified, retrieves list of all network objects.

URL for listing: `/api/fmc_config/v1/domain/{domain_UUID}/object/networks`

URL for GET by ID: `/api/fmc_config/v1/domain/{domain_UUID}/object/networks/{object_UUID}`

Permissions: Object Manager

## DELETE portobjectgroups

Request Type: **DELETE**

Description: Deletes the specified port object groups.

URL: `/api/fmc_config/v1/domain/{domain_UUID}/object/portobjectgroups/{object_UUID}`

URL to DELETE overrides on a particular object:

`/api/fmc_config/v1/domain/{domain_UUID}/object/portobjectgroups/{object_UUID}?overrideTargetId={target_UUID}`

Permissions: Object Manager > Modify Object Manager

## PUT portobjectgroups

Request Type: **PUT**

Description: Modifies port object groups.

URL: `/api/fmc_config/v1/domain/{domain_UUID}/object/portobjectgroups/{object_UUID}`

Permissions: Object Manager > Modify Object Manager

## POST portobjectgroups

Request Type: **POST**

Description: Creates or overrides the port object groups with the specified parameters.

URL: `/api/fmc_config/v1/domain/{domain_UUID}/object/portobjectgroups`

Permissions: Object Manager > Modify Object Manager

## GET portobjectgroups

Request Type: **GET**

Description: Retrieves the port object group object associated with the specified ID. If no ID is specified, retrieves list of all port object group objects.

URL for listing: `/api/fmc_config/v1/domain/{domain_UUID}/object/portobjectgroups`

URL for GET by ID:

`/api/fmc_config/v1/domain/{domain_UUID}/object/portobjectgroups/{object_UUID}`

URL to list all overrides on a particular object:

`/api/fmc_config/v1/domain/{domain_UUID}/object/portobjectgroups/{portobjectgroup_UUID}/overrides`

Permissions: Object Manager

## GET ports

Request Type: **GET**

Description: Retrieves list of all port objects.

URL: `/api/fmc_config/v1/domain/{domain_UUID}/object/ports`

Permissions: Object Manager

## DELETE protocolportobjects

Request Type: **DELETE**

Description: Deletes the specified protocol port objects.

URL: `/api/fmc_config/v1/domain/{domain_UUID}/object/protocolportobjects/{object_UUID}`

URL to DELETE overrides on a particular object:

`/api/fmc_config/v1/domain/{domain_UUID}/object/protocolportobjects/{object_UUID}?overrideTargetId={target_UUID}`

Permissions: Object Manager > Modify Object Manager

## PUT protocolportobjects

Request Type: **PUT**

Description: Modifies protocol port objects.

URL: `/api/fmc_config/v1/domain/{domain_UUID}/object/protocolportobjects/{object_UUID}`

Permissions: Object Manager > Modify Object Manager

## POST protocolportobjects

Request Type: **POST**

Description: Creates or overrides the protocol port objects with the specified parameters.

URL: `/api/fmc_config/v1/domain/{domain_UUID}/object/protocolportobjects`

Permissions: Object Manager > Modify Object Manager

## GET protocolportobjects

Request Type: **GET**

Description: Retrieves the protocol port object associated with the specified ID. If no ID is specified, retrieves list of all protocol port objects.

URL for listing: `/api/fmc_config/v1/domain/{domain_UUID}/object/protocolportobjects`

URL for GET by ID:

`/api/fmc_config/v1/domain/{domain_UUID}/object/protocolportobjects/{object_UUID}`

Permissions: Object Manager

## DELETE ranges

Request Type: **DELETE**

Description: Deletes the specified address range.

URL: `/api/fmc_config/v1/domain/{domain_UUID}/object/ranges/{object_UUID}`

URL to DELETE overrides on a particular object:

`/api/fmc_config/v1/domain/{domain_UUID}/object/ranges/{object_UUID}?overrideTargetId={target_UUID}`

Permissions: Object Manager > Modify Object Manager

## PUT ranges

Request Type: **PUT**

Description: Modifies an address range.

URL: `/api/fmc_config/v1/domain/{domain_UUID}/object/ranges/{object_UUID}`

Permissions: Object Manager > Modify Object Manager

## POST ranges

Request Type: **POST**

Description: Creates or overrides an address range with the specified parameters.

URL: `/api/fmc_config/v1/domain/{domain_UUID}/object/ranges`

Permissions: Object Manager > Modify Object Manager

## GET ranges

Request Type: **GET**

Description: Retrieves the address range object associated with the specified ID. If no ID is specified, retrieves list of all address range objects.

URL for listing: `/api/fmc_config/v1/domain/{domain_UUID}/object/ranges`

URL for GET by ID: `/api/fmc_config/v1/domain/{domain_UUID}/object/ranges/{object_UUID}`

Permissions: Object Manager

## GET realms

Request Type: **GET**

Description: Retrieves the realm object associated with the specified ID. If no ID is specified, retrieves list of all realm objects.

URL: `/api/fmc_config/v1/domain/{domain_UUID}/object/realms`

URL for GET by ID: `/api/fmc_config/v1/domain/{domain_UUID}/object/realms/{object_UUID}`

Permissions: Object Manager

## GET realmusergroups

Request Type: **GET**

Description: Retrieves the realm user group object associated with the specified ID. If no ID is specified, retrieves list of all realm user group objects.

URL: `/api/fmc_config/v1/domain/{domain_UUID}/object/realmusergroups`

URL for GET by ID: `/api/fmc_config/v1/domain/{domain_UUID}/object/realmusergroups/{object_UUID}`

Permissions: Object Manager

Parameters available for filtering: realmUuid



---

**Note**

This is a required parameter.

---

## GET realmusers

Request Type: **GET**

Description: Retrieves the realm user object associated with the specified ID. If no ID is specified, retrieves list of all realm user objects.

URL: `/api/fmc_config/v1/domain/{domain_UUID}/object/realmusers`

URL for GET by ID: `/api/fmc_config/v1/domain/{domain_UUID}/object/realmusers/{object_UUID}`

Permissions: Object Manager

Parameters available for filtering: realmUuid



---

**Note**

This is a required parameter.

---

## GET securitygrouptags

Request Type: **GET**

Description: Retrieves the custom security group tag object associated with the specified ID. If no ID is specified, retrieves list of all custom security group tag objects.

URL: /api/fmc\_config/v1/domain/{domain\_UUID}/object/securitygrouptags

URL for GET by ID:

/api/fmc\_config/v1/domain/{domain\_UUID}/object/securitygrouptags/{object\_UUID}

Permissions: Object Manager

Parameters available for filtering: name

## DELETE securityzones

Request Type: **DELETE**

Description: Deletes the specified securityzone objects.

URL: /api/fmc\_config/v1/domain/{domain\_UUID}/object/securityzones/{object\_UUID}

Permissions: Object Manager>Modify Object Manager

## PUT securityzones

Request Type: **PUT**

Description: Modifies a securityzone object.

URL: /api/fmc\_config/v1/domain/{domain\_UUID}/object/securityzones/{object\_UUID}

Permissions: Object Manager>Modify Object Manager

## POST securityzones

Request Type: **POST**

Description: Creates or overrides the securityzone objects with the specified parameters.

URL: /api/fmc\_config/v1/domain/{domain\_UUID}/object/securityzones

Permissions: Object Manager > Modify Object Manager

## GET securityzones

Request Type: **GET**

Description: Retrieves the security zone objects associated with the specified ID. If no ID is specified, retrieves list of all security zone objects.

URL: /api/fmc\_config/v1/domain/{domain\_UUID}/object/securityzones

URL for GET by ID: /api/fmc\_config/v1/domain/{domain\_UUID}/object/securityzones/{object\_UUID}

Permissions: Object Manager

Parameters available for filtering: name

## GET siurlfeeds

Request Type: **GET**

Description: Retrieves the Security Intelligence url feed object associated with the specified ID. If no ID is specified, retrieves list of all Security Intelligence url feed objects.

URL: /api/fmc\_config/v1/domain/{domain\_UUID}/object/siurlfeeds

URL for GET by ID: /api/fmc\_config/v1/domain/{domain\_UUID}/object/siurlfeeds/{object\_UUID}

Permissions: Object Manager

## GET siurllists

Request Type: **GET**

Description: Retrieves the Security Intelligence url list object associated with the specified ID. If no ID is specified, retrieves list of all Security Intelligence url list objects.

URL: /api/fmc\_config/v1/domain/{domain\_UUID}/object/siurllists

URL for GET by ID: /api/fmc\_config/v1/domain/{domain\_UUID}/object/siurllists/{object\_UUID}

Permissions: Object Manager

## DELETE slamonitors

Request Type: **DELETE**

Description: Deletes the sla monitor object associated with the specified ID.

URL: /api/fmc\_config/v1/domain/{domain\_UUID}/object/slamonitors/{object\_UUID}

Permissions: Object Manager > Modify Object Manager

## PUT slamonitors

Request Type: **PUT**

Description: Modifies the sla monitor object associated with the specified ID.

URL: /api/fmc\_config/v1/domain/{domain\_UUID}/object/slamonitors/{object\_UUID}

Permissions: Object Manager > Modify Object Manager

## POST slamonitors

Request Type: **POST**

Description: Creates or overrides a SLA monitor with the specified parameters.

URL: /api/fmc\_config/v1/domain/{domain\_UUID}/object/slamonitors

Permissions: Object Manager > Modify Object Manager



## GET slamonitors

Request Type: **GET**

Description: Retrieves the SLA Monitors associated with the specified ID. If no ID is specified, retrieves list of all SLA Monitors.

URL: `/api/fmc_config/v1/domain/{domain_UUID}/object/slamonitors`

URL by GET by ID: `/api/fmc_config/v1/domain/{domain_UUID}/object/slamonitors/{object_UUID}`

Permissions: Object Manager

## GET tunneltags

Request Type: **GET**

Description: Retrieves the tunnel tag object associated with the specified ID. If no ID is specified, retrieves list of all tunnel tag objects.

URL: `/api/fmc_config/v1/domain/{domain_UUID}/object/tunneltags`

URL for GET by ID: `/api/fmc_config/v1/domain/{domain_UUID}/object/tunneltags/{object_UUID}`

Permissions: Object Manager

## GET urlcategories

Request Type: **GET**

Description: Retrieves the url category object associated with the specified ID. If no ID is specified, retrieves list of all url category objects.

URL: `/api/fmc_config/v1/domain/{domain_UUID}/object/urlcategories`

URL for GET by ID: `/api/fmc_config/v1/domain/{domain_UUID}/object/urlcategories/{object_UUID}`

Permissions: Object Manager

## DELETE urlgroups

Request Type: **DELETE**

Description: Deletes the specified urlgroup objects.

URL: `/api/fmc_config/v1/domain/{domain_UUID}/object/urlgroups/{object_UUID}`

URL to DELETE overrides on a particular object:

`/api/fmc_config/v1/domain/{domain_UUID}/object/urlgroups/{object_UUID}?overrideTargetId={target_UUID}`

Permissions: Object Manager > Modify Object Manager

## PUT urlgroups

Request Type: **PUT**

Description: Modifies urlgroup objects.

URL: /api/fmc\_config/v1/domain/{domain\_UUID}/object/urlgroups/{object\_UUID}

Permissions: Object Manager > Modify Object Manager

## POST urlgroups

Request Type: **POST**

Description: Creates or overrides the urlgroup objects with the specified parameters.

URL: /api/fmc\_config/v1/domain/{domain\_UUID}/object/urlgroups

Permissions: Object Manager > Modify Object Manager

## GET urlgroups

Request Type: **GET**

Description: Retrieves the url group objects associated with the specified ID. If no ID is specified, retrieves list of all url group objects.

URL for listing: /api/fmc\_config/v1/domain/{domain\_UUID}/object/urlgroups

URL for GET by ID: /api/fmc\_config/v1/domain/{domain\_UUID}/object/urlgroups/{object\_UUID}

Permissions: Object Manager > Modify Object Manager

## DELETE urls

## PUT urls

Request Type: **PUT**

Description: Modifies a URL.

URL: /api/fmc\_config/v1/domain/{domain\_UUID}/object/urls/{object\_UUID}

Permissions: Object Manager

## POST urls

Request Type: **POST**

Description: Creates or overrides the URLs with the specified parameters.

URL: /api/fmc\_config/v1/domain/{domain\_UUID}/object/urls

Permissions: Object Manager > Modify Object Manager

## GET urls

Request Type: **GET**

Description: Retrieves the url objects associated with the specified ID. If no ID is specified, retrieves list of all url objects.

URL for listing: `/api/fmc_config/v1/domain/{domain_UUID}/object/urls`

URL for GET by ID: `/api/fmc_config/v1/domain/{domain_UUID}/object/urls/{object_UUID}`

Permissions: Object Manager

## GET variablesets

Request Type: **GET**

Description: Retrieves the variable set object associated with the specified ID. If no ID is specified, retrieves list of all variable set objects.

URL: `/api/fmc_config/v1/domain/{domain_UUID}/object/variablessets`

URL for GET by ID: `/api/fmc_config/v1/domain/{domain_UUID}/object/variablessets/{object_UUID}`

Permissions: Object Manager

## DELETE vlangrouptags

Request Type: **DELETE**

Description: Deletes the specified vlangrouptag objects.

URL: `/api/fmc_config/v1/domain/{domain_UUID}/object/vlangrouptags/{object_UUID}`

URL to DELETE overrides on a particular object:

`/api/fmc_config/v1/domain/{domain_UUID}/object/vlangrouptags/{object_UUID}?overrideTargetId={target_UUID}`

Permissions: Object Manager > Modify Object Manager

## PUT vlangrouptags

Request Type: **PUT**

Description: Modifies vlangrouptag objects.

URL: `/api/fmc_config/v1/domain/{domain_UUID}/object/vlangrouptags/{object_UUID}`

Permissions: Object Manager > Modify Object Manager

## POST vlangrouptags

Request Type: **POST**

Description: Creates or overrides the VLAN group tags with the specified parameters.

URL: `/api/fmc_config/v1/domain/{domain_UUID}/object/vlangrouptags`

Permissions: Object Manager > Modify Object Managers

## GET vlangrouptags

Request Type: **GET**

Description: Retrieves the vlan group tag objects associated with the specified ID. If no ID is specified, retrieves list of all vlan group tag objects.

URL for listing: `/api/fmc_config/v1/domain/{domain_UUID}/object/vlangrouptags`

URL for GET by ID: `/api/fmc_config/v1/domain/{domain_UUID}/object/vlangrouptags/{object_UUID}`

Permissions: Object Manager > Modify Object Manager

## DELETE vlantags

Request Type: **DELETE**

Description: Deletes the specified VLAN tag objects.

URL: `/api/fmc_config/v1/domain/{domain_UUID}/object/vlantags/{object_UUID}`

URL to DELETE overrides on a particular object:

`/api/fmc_config/v1/domain/{domain_UUID}/object/vlantags/{object_UUID}?overrideTargetId={target_UUID}`

Permissions: Object Manager > Modify Object Manager

## PUT vlantags

Request Type: **PUT**

Description: Modifies VLAN tag objects.

URL: `/api/fmc_config/v1/domain/{domain_UUID}/object/vlantags/{object_UUID}`

Permissions: Object Manager > Modify Object Manager

## POST vlantags

Request Type: **POST**

Description: Creates or overrides the VLAN tags with the specified parameters.

URL: `/api/fmc_config/v1/domain/{domain_UUID}/object/vlantags`

Permissions: Object Manager > Modify Object Manager

## GET vlantags

Request Type: **GET**

Description: Retrieves the vlantag objects associated with the specified ID. If no ID is specified, retrieves list of all vlantag objects.

URL for listing: `/api/fmc_config/v1/domain/{domain_UUID}/object/vlantags`

URL for GET by ID: `/api/fmc_config/v1/domain/{domain_UUID}/object/vlantags/{object_UUID}`

Permissions: Object Manager

# Policy Services

## DELETE accesspolicies

Request Type: **DELETE**

Description: Deletes the access control policy with the specified ID.

URL: `/api/fmc_config/v1/domain/{domain_UUID}/policy/accesspolicies/{object_UUID}`

Permissions: Policies>Access Control Policy>Modify Access Control Policy

## PUT accesspolicies

Request Type: **PUT**

Description: Modifies an access control policy.

URL: `/api/fmc_config/v1/domain/{domain_UUID}/policy/accesspolicies/{object_UUID}`

Permissions: Policies>Access Control Policy>Modify Access Control Policy

## POST accesspolicies

Request Type: **POST**

Description: Creates an access control policy with the specified parameters.

URL: `/api/fmc_config/v1/domain/{domain_UUID}/policy/accesspolicies`

Permissions: Policies>Access Control Policy>Modify Access Control Policy

## GET accesspolicies

Request Type: **GET**

Description: Retrieves the access control policy associated with the specified ID. If no ID is specified, retrieves a list of all access control policies.

URL: `/api/fmc_config/v1/domain/{domain_UUID}/policy/accesspolicies`

URL for GET by ID: `/api/fmc_config/v1/domain/{domain_UUID}/policy/accesspolicies/{object_UUID}`

Permissions: Policies

## DELETE accessrules

Request Type: **DELETE**

Description: Deletes an access control rule in the specified access control policy.

URL:

`/api/fmc_config/v1/domain/{domain_UUID}/policy/accesspolicies/{container_UUID}/accessrules/{object_UUID}`

Permissions: Policies>Access Control>Access Control Policy>Modify Access Control Policy

## PUT accessrules

Request Type: **PUT**

Description: Modifies an access control rule in the specified access control policy.

URL:

/api/fmc\_config/v1/domain/{domain\_UUID}/policy/accesspolicies/{container\_UUID}/accessrules/{object\_UUID}

Permissions: Policies>Access Control>Access Control Policy>Modify Access Control Policy

## POST accessrules

Request Type: **POST**

Description: Creates an access control rule in the specified access control policy.

URL:

/api/fmc\_config/v1/domain/{domain\_UUID}/policy/accesspolicies/{container\_UUID}/accessrules

Permissions: Policies>Access Control>Access Control Policy>Modify Access Control Policy

## GET accessrules

Request Type: **GET**

Description: Retrieves the access control rule associated with the specified policy ID and rule ID. If no rule ID is specified, retrieves list of all access rules associated with the specified policy ID.

URL:

/api/fmc\_config/v1/domain/{domain\_UUID}/policy/accesspolicies/{container\_UUID}/accessrules

URL for GET by ID:

/api/fmc\_config/v1/domain/{domain\_UUID}/policy/accesspolicies/{container\_UUID}/accessrules/{object\_UUID}

Permissions: Policies>Access Control>Access Control Policy

## PUT defaultactions

Request Type: **PUT**

Description: Modifies the default action associated with the specified access control policy ID and default action ID.

URL:

/api/fmc\_config/v1/domain/{domain\_UUID}/policy/accesspolicies/{container\_UUID}/defaultactions/{object\_UUID}

Permissions: Policies>Access Control>Access Control Policy>Modify Access Control Policy

## GET defaultactions

Request Type: **GET**

Description: Retrieves the default action associated with the specified access control policy ID and default action ID. If no default action ID is specified, retrieves list of all default actions associated with the specified access control policy ID.

URL:

/api/fmc\_config/v1/domain/{domain\_UUID}/policy/accesspolicies/{container\_UUID}/defaultactions

URL for GET by ID:

/api/fmc\_config/v1/domain/{domain\_UUID}/policy/accesspolicies/{container\_UUID}/defaultactions/{object\_UUID}

Permissions: Policies>Access Control>Access Control Policy

## GET filepolicies

Request Type: **GET**

Description: Retrieves the file policy object associated with the specified ID. If no ID is specified, retrieves list of all file policy objects.

URL: /api/fmc\_config/v1/domain/{domain\_UUID}/policy/filepolicies

URL for GET by ID: /api/fmc\_config/v1/domain/{domain\_UUID}/policy/filepolicies/{object\_UUID}

Permissions: Policies>Access Control>Malware & File Policy

## DELETE ftdnatpolicies

Request Type: **DELETE**

Description: Deletes the Firepower Threat Defense NAT policy with the specified ID.

URL: /api/fmc\_config/v1/domain/{domain\_UUID}/policy/ftdnatpolicies/{object\_UUID}

Permissions: Devices>NAT>NAT List >Modify NAT policy

## PUT ftdnatpolicies

Request Type: **PUT**

Description: Modifies an Firepower Threat Defense NAT policy with the specified ID.

URL: /api/fmc\_config/v1/domain/{domain\_UUID}/policy/ftdnatpolicies/{object\_UUID}

Permissions: Devices>NAT>NAT List >Modify NAT policy

## POST ftdnatpolicies

Request Type: **POST**

Description: Creates a Firepower Threat Defense device NAT policy with the specified parameters.

URL: /api/fmc\_config/v1/domain/{domain\_UUID}/policy/ftdnatpolicies

Permissions: Devices>NAT>NAT List >Modify NAT policy

## GET ftdnatpolicies

Request Type: **GET**

Description: Retrieves the Firepower Threat Defense NAT policy associated with the specified ID. If no ID is specified, retrieves a list of all Firepower Threat Defense NAT policies.

URL: `/api/fmc_config/v1/domain/{domain_UUID}/policy/ftdnatpolicies`

URL for GET by ID: `/api/fmc_config/v1/domain/{domain_UUID}/policy/ftdnatpolicies/{object_UUID}`

Permissions: Devices>NAT>NAT List

## DELETE autonatrules

Request Type: **DELETE**

Description: Deletes a NAT rule with the specified parameters.

URL:

`/api/fmc_config/v1/domain/{domain_UUID}/policy/ftdnatpolicies/{container_UUID}/autonatrules/{object_UUID}`

Permissions: Devices>NAT>NAT List >Modify NAT policy

## PUT autonatrules

Request Type: **PUT**

Description: Modifies a NAT rule with the specified parameters.

URL:

`/api/fmc_config/v1/domain/{domain_UUID}/policy/ftdnatpolicies/{container_UUID}/autonatrules/{autonatrule_UUID}`

Permissions: Devices>NAT>NAT List >Modify NAT policy

## POST autonatrules

Request Type: **POST**

Description: Creates a NAT policy with the specified parameters.

URL:

`/api/fmc_config/v1/domain/{domain_UUID}/policy/ftdnatpolicies/{container_UUID}/autonatrules`

Permissions: Devices>NAT>NAT List >Modify NAT policy

## GET autonatrules

Request Type: **GET**

Description: Retrieves the NAT rule associated with the specific ID. If no ID is specified, retrieves a list of all NAT rules.

URL:

`/api/fmc_config/v1/domain/{domain_UUID}/policy/ftdnatpolicies/{container_UUID}/autonatrules`



URL for GET by ID:

/api/fmc\_config/v1/domain/{domain\_UUID}/policy/ftdnatpolicies/{container\_UUID}/autonatrules/{object\_UUID}

Permissions: Devices>NAT>NAT List

## DELETE manualnatrules

Request Type: **POST**

Description: Deletes a manual NAT rule in the specified NAT policy.

URL:

/api/fmc\_config/v1/domain/{domain\_UUID}/policy/ftdnatpolicies/{container\_UUID}/manualnatrules/{object\_UUID}

Permissions: Devices>NAT>NAT List >Modify NAT policy

## PUT manualnatrules

Request Type: **PUT**

Description: Modify a manual NAT rule in the specified NAT policy.

URL:

/api/fmc\_config/v1/domain/{domain\_UUID}/policy/ftdnatpolicies/{container\_UUID}/manualnatrules/{object\_UUID}

Permissions: Devices>NAT>NAT List >Modify NAT policy

## POST manualnatrules

Request Type: **POST**

Description: Creates manual NAT rules with the specified parameters.

URL:

/api/fmc\_config/v1/domain/{domain\_UUID}/policy/ftdnatpolicies/{container\_UUID}/manualnatrules

Permissions: Devices>NAT>NAT List >Modify NAT policy

## GET manualnatrules

Request Type: **GET**

Description: Retrieves the manual NAT rule associated with the specified ID. If no ID is specified, retrieves a list of all manual NAT rules.

URL:

/api/fmc\_config/v1/domain/{domain\_UUID}/policy/ftdnatpolicies/{container\_UUID}/manualnatrules

URL for GET by ID:

/api/fmc\_config/v1/domain/{domain\_UUID}/policy/ftdnatpolicies/{container\_UUID}/manualnatrules/{object\_UUID}

Permissions: Devices>NAT>NAT List

## GET natrules

Request Type: **GET**

Description: Retrieves the list of all NAT rules (manual and auto) associated with the specified NAT policy.

URL: /api/fmc\_config/v1/domain/{domain\_UUID}/policy/ftdnatpolicies/{container\_UUID}/natrules

Permissions: Devices>NAT>NAT List

## GET intrusionpolicies

Request Type: **GET**

Description: Retrieves the intrusion policy associated with the specified ID. If no ID is specified, retrieves list of all intrusion policies.

URL: /api/fmc\_config/v1/domain/{domain\_UUID}/policy/intrusionpolicies

URL for GET by ID:

/api/fmc\_config/v1/domain/{domain\_UUID}/policy/intrusionpolicies/{object\_UUID}

Permissions: Policies>Access Control>Intrusion Policy

## GET snmpalerts

Request Type: **GET**

Description: Retrieves the SNMP alert object associated with the specified ID. If no ID is specified, retrieves a list of all SNMP alert objects.

URL: /api/fmc\_config/v1/domain/{domain\_UUID}/policy/snmpalerts

URL for GET by ID: /api/fmc\_config/v1/domain/{domain\_UUID}/policy/snmpalerts/{object\_UUID}

Permissions: Policies > Actions > Alerts > View Alerts

## GET syslogalerts

Request Type: **GET**

Description: Retrieves the syslog alert object associated with the specified ID. If no ID is specified, retrieves a list of all syslog alert objects.

URL: /api/fmc\_config/v1/domain/{domain\_UUID}/policy/syslogalerts

URL for GET by ID: /api/fmc\_config/v1/domain/{domain\_UUID}/policy/syslogalerts/{object\_UUID}

Permissions: Policies > Actions > Alerts

# Policy Assignment Services

## PUT policyassignments

Request Type: **PUT**

Description: Modifies an assigned access policy to add a new device or a new device group.

URL: `/api/fmc_config/v1/domain/{domain_UUID}/assignment/policyassignments/{object_UUID}`

Permissions:

## POST policyassignments

Request Type: **POST**

Description: Assigns an unassigned access policy to devices or device groups.

URL: `/api/fmc_config/v1/domain/{domain_UUID}/assignment/policyassignments`

Permissions:

## GET policyassignments

Request Type: **GET**

Description: Retrieves the policy assignment associated with the specified ID. If no ID is specified, retrieves a list of all policy assignments to target devices.

URL: `/api/fmc_config/v1/domain/{domain_UUID}/assignment/policyassignments`

URL for GET by ID:

`/api/fmc_config/v1/domain/{domain_UUID}/assignment/policyassignments/{object_UUID}`

Permissions:

Parameters available for filtering: name

# Status Services

## GET taskstatuses

Description: Retrieves information about a previously submitted pending job/task with the specified ID. This is currently supported for device registration and deployment jobs.

URL for GET by ID: `/api/fmc_config/v1/domain/{domain_UUID}/job/taskstatuses/{object_UUID}`

Permissions: Modify Devices/Deployment

# System Information

## GET serverversion

Request Type: **GET**

Description: Requests version information for the server. If no ID is specified, retrieves a list of all servers.

URL: /api/fmc\_platform/v1/info/serverversion

URL for GET by ID: /api/fmc\_platform/v1/info/serverversion/{objectID}

Permissions: