



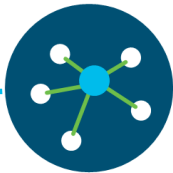
# Get Started with My Cisco Entitlements



View all | Manage all | Secure all

## Document Purpose

**My Cisco Entitlements (MCE)** is a secure one-stop platform where you can gain insights into your business and better manage your Cisco products and services to minimize risk.



Simple view of Products and Services, along with activation and utilization metrics

**Full  
Visibility**



Plan and control usages of your products and services

**Maximum  
ROI**



Proactively identify Products and Services coverage and compliance

**Reduce  
Risk**



Simplify the way you manage and secure user access

**Protect  
Investments**

This “**MCE Onboarding Overview**” document provides details on the steps for getting started with My Cisco Entitlements.

## Audience

Cisco Customers and Partners.



# Get Started with My Cisco Entitlements

## Prerequisite

Before getting started with MCE, you will need to have an active Smart Account (SA).

### Activate your Smart Account (SA)



**Skip this step**, if you already have a Smart Account (SA) for your organization.

Create a SA, for your organization, to centrally organize all your Cisco services, subscriptions, licenses and devices in one place.

### Tutorials and Documents

✓ [Introduction to Smart Account](#)

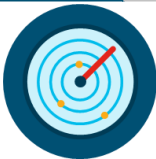
✓ [Create a Smart Account](#)

After you activate the SA, follow these three steps to get onboarded with MCE.

## Onboarding Steps

### Step 1

#### Establish Anchor Location



Establish Anchor Location to find and assign all your Cisco's services, subscriptions, licenses and devices to your Customer Smart Account.

### Tutorials and Documents

✓ [How to Establish Anchor Location](#)

✓ [An Introduction to Anchor Location](#)



# Get Started with My Cisco Entitlements

## TIP

### Mandate Smart Account on All New Purchases (Optional)



For the selected **Anchor Location**, make Smart Account mandatory on future orders in Cisco Commerce Workspace (CCW). This step is optional.

#### Tutorials and Documents

- ✓ [How to Mandate Smart Account on New Purchases](#)

## Step 2

### Assign your Unassigned Assets and Entitlements



For ease of management, create new VAs to organize your Cisco services, subscriptions, licenses and devices into various categories.

Assign your unassigned assets and entitlements to VAs to enable actions such as version upgrade and open technical case.

#### Tutorials and Documents

- |  |  |
|--|--|
| ✓ <a href="#">Create a Virtual Account</a>             | ✓ <a href="#">Structure a Smart Account</a>                                  |
| ✓ <a href="#">Best Practices Customer SA Structure</a> | ✓ <a href="#">How to Assign Assets and Entitlements to a Virtual Account</a> |



# Get Started with My Cisco Entitlements

## Use My Cisco Entitlements (MCE)

### Use My Cisco Entitlements (MCE)



Now that you have onboarded on to My Cisco Entitlements (MCE), use MCE to gain insights into your asset usage, coverage, and details; take actions - open a support case, download software, filter, export, and more.

### Tutorials and Documents

- ✓ [MCE Overview Video](#)
- ✓ [MCE User Guide](#)
- ✓ [How to Use MCE Overview](#)

## Other Useful Links

- [MCE Cisco.com](#)
- [MCE Frequently Asked Questions](#)
- [Roadmap](#)



To learn more, visit [www.cisco.com/go/mce](http://www.cisco.com/go/mce) and for questions, write to [MyCiscoEntitlements@cisco.com](mailto:MyCiscoEntitlements@cisco.com)