

在高頻寬租用線路和LLQ上使用PPP的VoIP

目錄

[簡介](#)

[必要條件](#)

[需求](#)

[採用元件](#)

[慣例](#)

[背景資訊](#)

[設定](#)

[網路圖表](#)

[組態](#)

[驗證](#)

[驗證San Jose路由器](#)

[Raleigh路由器的驗證](#)

[疑難排解](#)

[指令疑難排解](#)

[相關資訊](#)

簡介

本文檔提供兩台Cisco 3640路由器的配置示例。這些配置使路由器能夠通過具有低延遲隊列(LLQ)的高頻寬租用線路通過PPP與VoIP通訊。有關LLQ的詳細資訊，請參閱[具有服務品質 \(LLQ/IP RTP優先順序、LFI、cRTP\) 的VoIP over PPP鏈路文檔](#)。

注意：本文檔在討論VoIP和QoS方面的高頻寬時，高頻寬是指任何高於768 kbps的頻寬。

必要條件

需求

本文件沒有特定需求。

採用元件

本文中的資訊係根據以下軟體和硬體版本：

- Cisco IOS®軟體版本12.2(19a)IP Plus或任何其他Cisco IOS軟體版本12.2、12.2T、12.3或12.3T
- 兩台Cisco 3640路由器，至少具有48 DRAM和16 Mb快閃記憶體
- 兩個Cisco NM-2V語音/傳真介面卡插槽網路模組加上兩個VIC-2FXS介面卡

- 兩個串列介面在本示例中，兩個串列介面是NM-1E2Ws，每個介面有一個WIC-1T WAN介面卡。
- 用於連線到外部交換站(FXS)埠以進行語音呼叫的模擬電話

註： NM-1E2W、NM-1E1R2W和NM-2E2W網路模組沒有足夠的效能功率支援WIC-2T。缺少支援是因為硬體限制。

本文中的資訊是根據特定實驗室環境內的裝置所建立。文中使用到的所有裝置皆從已清除（預設）的組態來啟動。如果您的網路正在作用，請確保您已瞭解任何指令可能造成的影響。

慣例

如需文件慣例的詳細資訊，請參閱[思科技術提示慣例](#)。

背景資訊

如果將1500位元組的封包傳送到線路所需的時間超過10毫秒，則需要將封包分段。本文提供一個不進行分段的組態。此配置適用於1544千位鏈路，其1500位元組封包的傳輸延遲小於10毫秒。

注意： 在某些情況下，如果您有專用且完整的T1連線，則可能不需要分段功能。但是，您仍然需要QoS機制。在此情況下使用LLQ。如果將1500位元組的封包傳送到線路所需的時間小於10毫秒，則不需要對封包進行分段。完整的T1提供足夠的頻寬，允許語音資料包在沒有延遲問題的情況下進入和離開隊列。

注意： 如果您已在路由器上啟用分段，則100%時間會啟用排隊機制。如果已配置LLQ，則配置的值會限制優先順序隊列的流量。如果尚未啟用分段，路由器僅在出現擁塞的情況下應用QoS策略。

此外，線上路速率大於768 kbps的情況下，可能不需要壓縮即時傳輸協定(cRTP)。請參閱具有[服務品質\[LLQ/IP RTP優先順序、LFI、cRTP\]的VoIP over PPP連結檔案](#)。由於cRTP壓縮IP RTP報頭，因此使用cRTP有助於節省頻寬。在本檔案的[配置](#)部分中，不需要啟用cRTP。T1為語音資料包提供了足夠的頻寬，可以在不壓縮的情況下流到線路上，而不會出現問題。

注意： 如果您決定使用cRTP，請記住cRTP使用CPU資源。cRTP會對語音流量負擔沈重的路由器徵收過高的稅費。

注意： 在此配置中，兩台路由器通過租用線路背對背連線。但是，在大多數拓撲中，具有語音支援的路由器可以存在於任何地方。通常，語音路由器通過LAN連線到連線到WAN的其他路由器。如果您的語音路由器不通過租用線路通過PPP連線，則需要在連線到WAN的路由器上配置所有WAN連線配置命令；您未在語音路由器上配置命令，本文檔中的[配置](#)顯示了這些命令。

注意： 此配置適用於Cisco 1700、[2600](#)、[3600](#)和[3700系列](#)路由器。

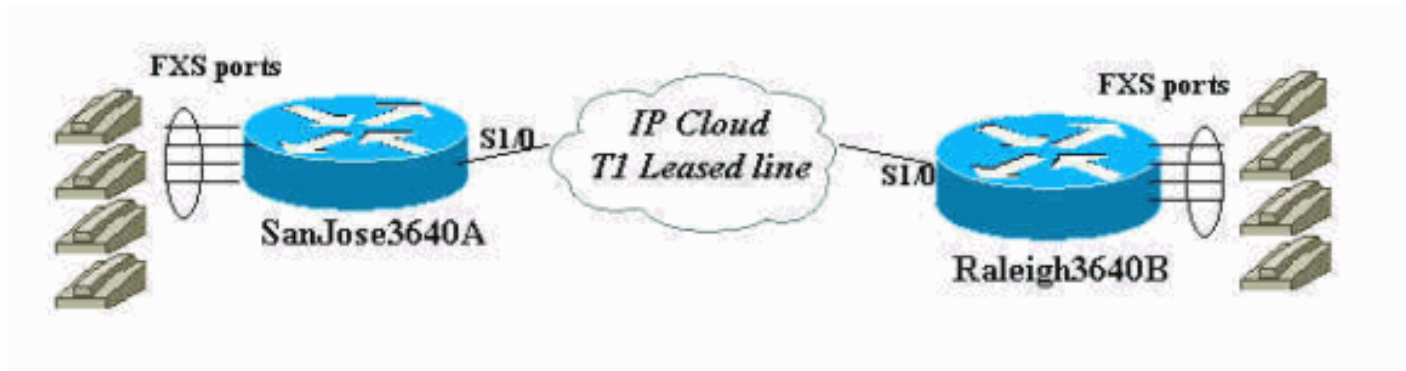
設定

本節提供用於設定本文件中所述功能的資訊。

注意： 要查詢有關本文檔中使用的命令的其他資訊，請使用[命令查詢工具](#)([僅限註冊客戶](#))。

網路圖表

本檔案會使用以下網路設定：



組態

本檔案會使用以下設定：

- [聖何塞](#)
- [羅利](#)

聖何塞

```
SanJose3640A# show run
Building configuration...

Current configuration : 1425 bytes
!
version 12.2
service timestamps debug datetime msec
service timestamps log datetime msec
no service password-encryption
!
hostname SanJose3640A
!
logging buffered 50000 debugging
!
ip subnet-zero
!
!
no ip domain-lookup
!
call rsvp-sync
!
!
!
!
!
!
!
class-map match-all voice-signaling
  match access-group 103
class-map match-all voice-traffic
  match access-group 102
!
!
policy-map voice-policy
  class voice-traffic
    priority 51
```

!--- These are two uncompressed G729 VoIP calls at 24 kpbs each !--- that have voice activity detection (VAD) disablement. You also need !--- to consider the Layer 2 (L2) overhead. class voice-signaling bandwidth 16 !--- This assigns a queue for voice signaling traffic that ensures 8 kbps. !--- Note: This action is optional and has nothing to do with good voice !--- quality. This queue assignment is a way to secure signaling.

```
class class-default
  fair-queue
!--- The class-default class classifies traffic that does !--- not fall into one of the class definitions. The fair-queue command !--- associates the default class weighted fair queuing (WFQ).
```

```
!
!
!
interface Ethernet1/0
  ip address 10.89.251.158 255.255.255.192
  half-duplex
!
interface Serial1/0
  bandwidth 1544
  ip address 192.168.1.1 255.255.255.0
  service-policy output voice-policy
  encapsulation ppp
  load-interval 30
  clockrate 2000000
!
ip classless
ip route 0.0.0.0 0.0.0.0 10.89.251.129
no ip http server
!
access-list 102 permit udp any any range 16384 32767
access-list 103 permit tcp any eq 1720 any
access-list 103 permit tcp any any eq 1720
!
voice-port 3/0/0
!
voice-port 3/0/1
!
voice-port 3/1/0
!
voice-port 3/1/1
!
dial-peer cor custom
!
!
!
dial-peer voice 1 voip
  incoming called-number .
  destination-pattern 2...
  session target ipv4:192.168.1.2
  dtmf-relay h245-alphanumeric
  no vad
!
dial-peer voice 2 pots
  destination-pattern 1001
  port 3/0/0
```

```
!  
dial-peer voice 3 pots  
  destination-pattern 1002  
  port 3/0/1  
!  
!  
line con 0  
line aux 0  
line vty 0 4  
password cisco  
login  
!  
end  
  
SanJose3640A#  
  
SanJose3640A#  
SanJose3640A# show version  
Cisco Internetwork Operating System Software  
IOS (tm) 3600 Software (C3640-IS-M), Version 12.2(19a),  
RELEASE SOFTWARE (fc2)  
Copyright (c) 1986-2003 by cisco Systems, Inc.  
Compiled Mon 29-Sep-03 23:45 by pwade  
Image text-base: 0x60008930, data-base: 0x61134000  
  
ROM: System Bootstrap, Version 11.1(20)AA2, EARLY  
DEPLOYMENT RELEASE SOFTWARE (fc1)  
  
SanJose3640A uptime is 5 minutes  
System returned to ROM by reload  
System image file is "flash:c3640-is-mz.122-19a.bin"  
  
cisco 3640 (R4700) processor (revision 0x00) with  
126976K/4096K bytes of memory.  
Processor board ID 15636516  
R4700 CPU at 100Mhz, Implementation 33, Rev 1.0  
Bridging software.  
X.25 software, Version 3.0.0.  
SuperLAT software (copyright 1990 by Meridian Technology  
Corp).  
1 Ethernet/IEEE 802.3 interface(s)  
1 Serial network interface(s)  
2 Voice FXO interface(s)  
2 Voice FXS interface(s)  
DRAM configuration is 64 bits wide with parity disabled.  
125K bytes of non-volatile configuration memory.  
32768K bytes of processor board System flash  
(Read/Write)  
16384K bytes of processor board PCMCIA Slot1 flash  
(Read/Write)  
  
Configuration register is 0x2102  
  
SanJose3640A#
```

羅利

```
Raleigh3640A# show run  
Building configuration...  
  
Current configuration : 1406 bytes  
!  
version 12.2
```

```

service timestamps debug datetime msec
service timestamps log datetime msec
no service password-encryption
!
hostname Raleigh3640A
!
logging buffered 50000 debugging
!
ip subnet-zero
!
!
no ip domain-lookup
!
call rsvp-sync
!
!
!
!
!
!
!
class-map match-all voice-signaling
  match access-group 103
class-map match-all voice-traffic
  match access-group 102
!
!
policy-map voice-policy
  class voice-traffic
    priority 51
!--- These are two uncompressed G729 VoIP calls at 24
kpbs each !--- that have VAD disablement. You also need
to consider !--- the L2 overhead. class voice-signaling
bandwidth 16 !--- This assigns a queue for voice
signaling traffic that ensures 8 kbps. !--- Note: This
action is optional and has nothing to do with good voice
!--- quality. This queue assignment is a way to secure
signaling.

  class class-default
    fair-queue
!--- The class-default class classifies traffic that
does !--- not fall into one of the class definitions.
The fair-queue command !--- associates the default class
WFQ.
!
!
!
interface Ethernet1/0
  ip address 10.89.251.159 255.255.255.192
  half-duplex
!
interface Serial1/0
  bandwidth 1544
  ip address 192.168.1.2 255.255.255.0
  service-policy output voice-policy
  encapsulation ppp
  load-interval 30
!
ip classless
ip route 0.0.0.0 0.0.0.0 10.89.251.129
no ip http server

```

```
!  
access-list 102 permit udp any any range 16384 32767  
access-list 103 permit tcp any eq 1720 any  
access-list 103 permit tcp any any eq 1720  
!  
voice-port 3/0/0  
!  
voice-port 3/0/1  
!  
voice-port 3/1/0  
!  
voice-port 3/1/1  
!  
dial-peer cor custom  
!  
!  
!  
dial-peer voice 1 voip  
  incoming called-number .  
  destination-pattern 1...  
  session target ipv4:192.168.1.1  
  dtmf-relay h245-alphanumeric  
  no vad  
!  
dial-peer voice 2 pots  
  destination-pattern 2001  
  port 3/0/0  
!  
dial-peer voice 3 pots  
  destination-pattern 2002  
  port 3/0/1  
!  
!  
line con 0  
line aux 0  
line vty 0 4  
password cisco  
login  
!  
end  
  
Raleigh3640A#  
Raleigh3640A#  
Raleigh3640A# show version  
Cisco Internetwork Operating System Software  
IOS (tm) 3600 Software (C3640-IS-M), Version 12.2(19a),  
RELEASE SOFTWARE (fc2)  
Copyright (c) 1986-2003 by cisco Systems, Inc.  
Compiled Mon 29-Sep-03 23:45 by pwade  
Image text-base: 0x60008930, data-base: 0x61134000  
  
ROM: System Bootstrap, Version 12.1(17r) [cmong 17r],  
RELEASE SOFTWARE (fc1)  
  
Raleigh3640A uptime is 6 minutes  
System returned to ROM by reload  
System image file is "flash:c3640-is-mz.122-19a.bin"  
  
cisco 3640-A (R4700) processor (revision 0x00) with  
94208K/4096K bytes of memory.  
Processor board ID 29851759  
R4700 CPU at 100Mhz, Implementation 33, Rev 1.0  
Bridging software.  
X.25 software, Version 3.0.0.
```

```
SuperLAT software (copyright 1990 by Meridian Technology Corp).
1 Ethernet/IEEE 802.3 interface(s)
1 Serial network interface(s)
2 Voice FXO interface(s)
2 Voice FXS interface(s)
DRAM configuration is 64 bits wide with parity disabled.
123K bytes of non-volatile configuration memory.
32768K bytes of processor board System flash
(Read/Write)
16384K bytes of processor board PCMCIA Slot0 flash
(Read/Write)

Configuration register is 0x2102

Raleigh3640A#
```

驗證

在路由器中輸入這些[Configurations](#)後，確認它們是否正常工作。這裡的命令和相應的輸出演示了配置的成功實施。

[輸出直譯器工具](#)(僅供[註冊](#)客戶使用)支援某些**show**命令，此工具可讓您檢視**show**命令輸出的分析。

- **show interface serial 1/0** — 可用於檢查串列介面的狀態。
- **show call active voice brief** — 允許您在呼叫期間檢視呼叫資訊。
- **show call active voice** — 允許您檢視呼叫期間的呼叫資訊。
- **show policy-map interface** — 允許您驗證介面使用的QoS策略。
- **show access-list 102** — 允許您通過語音類的訪問清單驗證資料包選擇。數秒後再次發出命令，並驗證資料包計數是否增加。如有必要，發出**clear access-list counters 102**命令。
- **show voice call summary** — 可用於驗證呼叫狀態。命令會顯示呼叫是否有連線。
- **show voice port summary** — 可用於驗證語音埠的狀態。命令將語音埠顯示為掛機或摘機。
- **show voice dsp** — 可用於驗證每個呼叫使用的數位訊號處理器(DSP)狀態和編碼器 — 解碼器 (編解碼器)。

驗證San Jose路由器

執行驗證之前，請檢查介面以確保具有撥打電話所需的連線。發出**show interface serial 1/0**命令以檢查串列介面的狀態。使用本檔案的[組態](#)，請確保序列和多連結介面處於線路通訊協狀態。另請確保您看到以下內容：

- **LCP Openmultilink Open** — 表示PPP連線的建立。
- **:IPCPDCPCP** — 通知您可以通過PPP鏈路傳送IP流量。
- **weighted fair** — 對應於串列介面下的**service-policy output**命令列介面(CLI)。該策略用於配置LLQ，以區分語音優先於資料的優先順序。

```
SanJose3640A# show interface serial 1/0
Serial1/0 is up, line protocol is up
Hardware is QUICC Serial
Internet address is 192.168.1.1/24
MTU 1500 bytes, BW 1544 Kbit, DLY 20000 usec,
reliability 255/255, txload 1/255, rxload 1/255
Encapsulation PPP, loopback not set
```



```

Keepalive set (10 sec)
LCP Open
Open: IPCP, CDPCP
Last input 00:00:27, output 00:00:02, output hang never
Last clearing of "show interface" counters 00:00:05
Input queue: 0/75/0/0 (size/max/drops/flushes); Total output drops: 0
Queueing strategy: weighted fair
Output queue: 0/1000/64/0 (size/max total/threshold/drops)
Conversations 0/1/256 (active/max active/max total)
Reserved Conversations 1/1 (allocated/max allocated)
Available Bandwidth 1091 kilobits/sec
30 second input rate 0 bits/sec, 0 packets/sec
30 second output rate 0 bits/sec, 0 packets/sec
1 packets input, 16 bytes, 0 no buffer
Received 0 broadcasts, 0 runts, 0 giants, 0 throttles
0 input errors, 0 CRC, 0 frame, 0 overrun, 0 ignored, 0 abort
1 packets output, 16 bytes, 0 underruns
0 output errors, 0 collisions, 0 interface resets
0 output buffer failures, 0 output buffers swapped out
0 carrier transitions
DCD=up DSR=up DTR=up RTS=up CTS=up

```

SanJose3640A#

此輸出顯示了路由器之間的成功連線。如果您沒有看到 `line protocol is up`，請驗證DCE介面上的時脈頻率。某些串列介面不支援高速，例如NM-8A/S。此外，請確認兩端的引數是否相符，而且最重要的是，封裝是否相符。

`show call active voice brief` 命令的輸出顯示了兩個成功的呼叫。一個呼叫從Raleigh路由器到San Jose路由器，另一個呼叫從San Jose到Raleigh。此清單說明以粗體顯示的輸出：

- **Answer 1001 active** — 表示San Jose是呼叫的發起路由器。
- **Tele 3/0/0** — 表示這是電話呼叫段。
- **Originate 2001 active** — 表示羅利端電話接收呼叫。
- **IP 192.168.1.2** — 表示這是IP呼叫段。
- **Answer 2002 active** — 表示Raleigh是呼叫所傳送的路由器。
- **IP 192.168.1.2** — 表示這是IP呼叫段。
- **Originate 1002 active** — 表示San Jose端的一部電話接收呼叫。
- **Tele 3/0/1** — 表示這是電話呼叫段。

SanJose3640A# **show call active voice brief**

```

<ID>: <start>hs.<index> +<connect> pid:<peer_id> <dir> <addr> <state>
dur hh:mm:ss tx:<packets>/<bytes> rx:<packets>/<bytes>
IP <ip>:<udp> rtt:<time>ms pl:<play>/<gap>ms lost:<lost>/<early>/<late>
delay:<last>/<min>/<max>ms <codec>
MODEMPASS <method> buf:<fills>/<drains> loss <overall%> <multipkt>/<corrected>
last <buf event time>s dur:<Min>/<Max>s
FR <protocol> [int dlci cid] vad:<y/n> dtmf:<y/n> seq:<y/n>
<codec> (payload size)
ATM <protocol> [int vpi/vci cid] vad:<y/n> dtmf:<y/n> seq:<y/n>
<codec> (payload size)
Tele <int>: tx:<tot>/<v>/<fax>ms <codec> noise:<l> acom:<l> i/o:<l>/<l> dBm
Proxy <ip>:<audio udp>,<video udp>,<tcp0>,<tcp1>,<tcp2>,<tcp3> endpt: <type>/<manf>
bw: <req>/<act> codec: <audio>/<video>
tx: <audio pkts>/<audio bytes>,<video pkts>/<video bytes>,<t120 pkts>/<t120 bytes>
rx: <audio pkts>/<audio bytes>,<video pkts>/<video bytes>,<t120 pkts>/<t120 bytes>

```

Total call-legs: 4

11E8 : 115599hs.1 +318 pid:2 **Answer 1001 active**
dur 00:00:29 tx:1545/30900 rx:1544/30880
Tele 3/0/0:20: tx:30890/30890/0ms g729r8 noise:0 acom:2 i/0:-35/-44 dBm

11E8 : 115823hs.1 +94 pid:1 **Originate 2001 active**
dur 00:00:31 tx:1556/31120 rx:1602/32040
IP 192.168.1.2:17360 rtt:4ms pl:25590/0ms lost:0/1/0 delay:69/69/70ms g729r8

11F0 : 116855hs.1 +156 pid:1 **Answer 2002 active**
dur 00:00:20 tx:1087/21740 rx:1009/20180
IP 192.168.1.2:16772 rtt:2ms pl:17270/0ms lost:0/0/0 delay:69/69/70ms g729r8

11F0 : 116855hs.2 +156 pid:3 **Originate 1002 active**
dur 00:00:20 tx:1009/20180 rx:1087/21740
Tele 3/0/1 (23): tx:21740/21740/0ms g729r8 noise:0 acom:5 i/0:-40/-40 dBm

Total call-legs: 4

SanJose3640A#

show call active voice命令的輸出提供有關活動呼叫的更多詳細資訊：

SanJose3640A# **show call active voice**

Total call-legs: 4

GENERIC:

SetupTime=115599 ms

Index=1

PeerAddress=1001

PeerSubAddress=

PeerId=2

PeerIfIndex=9

LogicalIfIndex=4

ConnectTime=115917

CallDuration=00:05:05

CallState=4

CallOrigin=2

ChargedUnits=0

InfoType=2

TransmitPackets=15338

TransmitBytes=306760

ReceivePackets=15337

ReceiveBytes=306740

TELE:

ConnectionId=[0x38D3783F 0x14F111CC 0x801CFDB1 0x2D0CC4A5]

IncomingConnectionId=[0x38D3783F 0x14F111CC 0x801CFDB1 0x2D0CC4A5]

TxDuration=306740 ms

VoiceTxDuration=306740 ms

FaxTxDuration=0 ms

CoderTypeRate=g729r8

NoiseLevel=0

ACOMLevel=5

OutSignalLevel=-43

InSignalLevel=-36

InfoActivity=2

ERLLevel=5

SessionTarget=

ImgPages=0

GENERIC:

SetupTime=115823 ms

Index=1

PeerAddress=2001

PeerSubAddress=

PeerId=1
PeerIfIndex=8
LogicalIfIndex=0
ConnectTime=115917
CallDuration=00:05:07
CallState=4
CallOrigin=1
ChargedUnits=0
InfoType=2
TransmitPackets=15357
TransmitBytes=307140
ReceivePackets=15403
ReceiveBytes=308060
VOIP:
ConnectionId[0x38D3783F 0x14F111CC 0x801CFDB1 0x2D0CC4A5]
IncomingConnectionId[0x38D3783F 0x14F111CC 0x801CFDB1 0x2D0CC4A5]
RemoteIPAddress=192.168.1.2
RemoteUDPPort=17360
RemoteSignallingIPAddress=192.168.1.2
RemoteSignallingPort=1720
RemoteMediaIPAddress=192.168.1.2
RemoteMediaPort=17360
RoundTripDelay=1 ms
SelectedQoS=best-effort
tx_DtmfRelay=h245-alphanumeric
FastConnect=TRUE

Separate H245 Connection=FALSE

H245 Tunneling=TRUE

SessionProtocol=cisco
SessionTarget=ipv4:192.168.1.2
OnTimeRvPlayout=300810
GapFillWithSilence=0 ms
GapFillWithPrediction=0 ms
GapFillWithInterpolation=0 ms
GapFillWithRedundancy=0 ms
HiWaterPlayoutDelay=70 ms
LoWaterPlayoutDelay=69 ms
ReceiveDelay=69 ms
LostPackets=0
EarlyPackets=2
LatePackets=0

VAD = disabled

CoderTypeRate=g729r8

CodecBytes=20
GENERIC:
SetupTime=116855 ms
Index=1
PeerAddress=2002
PeerSubAddress=
PeerId=1
PeerIfIndex=8
LogicalIfIndex=0
ConnectTime=117011
CallDuration=00:04:56
CallState=4
CallOrigin=2
ChargedUnits=0
InfoType=2
TransmitPackets=14915
TransmitBytes=298300
ReceivePackets=14837

ReceiveBytes=296740
VOIP:
ConnectionId[0x6C135AD4 0x14F311CC 0x8024CE4C 0xAA60AB15]
IncomingConnectionId[0x6C135AD4 0x14F311CC 0x8024CE4C 0xAA60AB15]
RemoteIPAddress=192.168.1.2
RemoteUDPPort=16772
RemoteSignallingIPAddress=192.168.1.2
RemoteSignallingPort=11004
RemoteMediaIPAddress=192.168.1.2
RemoteMediaPort=16772
RoundTripDelay=7 ms
SelectedQoS=best-effort
tx_DtmfRelay=h245-alphanumeric
FastConnect=TRUE

Separate H245 Connection=FALSE

H245 Tunneling=TRUE

SessionProtocol=cisco
SessionTarget=
OnTimeRvPlayout=295580
GapFillWithSilence=0 ms
GapFillWithPrediction=0 ms
GapFillWithInterpolation=0 ms
GapFillWithRedundancy=0 ms
HiWaterPlayoutDelay=70 ms
LoWaterPlayoutDelay=69 ms
ReceiveDelay=69 ms

LostPackets=0
EarlyPackets=0
LatePackets=0
VAD = disabled
CoderTypeRate=g729r8

CodecBytes=20
GENERIC:
SetupTime=116855 ms
Index=2
PeerAddress=1002
PeerSubAddress=
PeerId=3
PeerIfIndex=10
LogicalIfIndex=5
ConnectTime=117011
CallDuration=00:04:59
CallState=4
CallOrigin=1
ChargedUnits=0
InfoType=2
TransmitPackets=14952
TransmitBytes=299040
ReceivePackets=15030
ReceiveBytes=300600

TELE:
ConnectionId=[0x6C135AD4 0x14F311CC 0x8024CE4C 0xAA60AB15]
IncomingConnectionId=[0x6C135AD4 0x14F311CC 0x8024CE4C 0xAA60AB15]
TxDuration=300600 ms
VoiceTxDuration=300600 ms
FaxTxDuration=0 ms
CoderTypeRate=g729r8
NoiseLevel=0
ACOMLevel=5
OutSignalLevel=-40
InSignalLevel=-41

```
InfoActivity=2
ERLLevel=5
SessionTarget=
ImgPages=0Total call-legs: 4

SanJose3640A#$
```

Other shows:

show policy-map interface命令的輸出包括以下粗體語句：

- **30 second offered rate 51000 bps** — 顯示兩個呼叫所需的頻寬(51 kpbs)。

```
SanJose3640A# show policy-map interface
Serial1/0

Service-policy output: voice-policy

Class-map: voice-traffic (match-all)
99403 packets, 6401420 bytes
30 second offered rate 51000 bps, drop rate 0 bps
Match: access-group 102
Queueing
Strict Priority
Output Queue: Conversation 264
Bandwidth 51 (kbps) Burst 1275 (Bytes)
(pkts matched/bytes matched) 407/65676
(total drops/bytes drops) 0/0

Class-map: voice-signaling (match-all)
158 packets, 12926 bytes
30 second offered rate 0 bps, drop rate 0 bps
Match: access-group 103
Queueing
Output Queue: Conversation 265
Bandwidth 16 (kbps) Max Threshold 64 (packets)
(pkts matched/bytes matched) 158/12926
(depth/total drops/no-buffer drops) 0/0/0

Class-map: class-default (match-any)
75 packets, 9221 bytes
30 second offered rate 0 bps, drop rate 0 bps
Match: any
Queueing
Flow Based Fair Queueing
Maximum Number of Hashed Queues 256
(total queued/total drops/no-buffer drops) 0/0/0
SanJose3640A#
```

show access-lists 102命令的輸出包括以下粗體語句：

- **100676 matches** — 顯示RTP封包的優先順序設定是因為封包到達存取清單102。

```
SanJose3640A# show access-lists 102
Extended IP access list 102
permit udp any any range 16384 32767 (100676 matches)
SanJose3640A#
SanJose3640A#
SanJose3640A#
```

```

SanJose3640A#
SanJose3640A# show access-lists 102
Extended IP access list 102
permit udp any any range 16384 32767 (100930 matches)
SanJose3640A#
SanJose3640A#
SanJose3640A# show access-lists 102
Extended IP access list 102
permit udp any any range 16384 32767 (101076 matches)
SanJose3640A#
SanJose3640A#
SanJose3640A#
SanJose3640A# show access-lists 102
Extended IP access list 102
permit udp any any range 16384 32767 (101198 matches)
SanJose3640A#
SanJose3640A#
SanJose3640A# show access-lists 102
Extended IP access list 102
permit udp any any range 16384 32767 (101304 matches)
SanJose3640A#
SanJose3640A#

```

```

SanJose3640A#
SanJose3640A# show voice call sum
PORT CODEC VAD VTSP STATE VPM STATE
=====
3/0/0 g729r8 n S_CONNECT FXSLS_CONNECT
3/0/1 g729r8 n S_CONNECT FXSLS_CONNECT
3/1/0 - - - FXOLS_ONHOOK
3/1/1 - - - FXOLS_ONHOOK

```

```

SanJose3640A#
SanJose3640A#

```

```

SanJose3640A#
SanJose3640A# show voice port sum
IN OUT
PORT CH SIG-TYPE ADMIN OPER STATUS STATUS EC
=====
3/0/0 -- fxs-ls up up off-hook idle y
3/0/1 -- fxs-ls up up off-hook idle y
3/1/0 -- fxo-ls up dorm idle on-hook y
3/1/1 -- fxo-ls up dorm idle on-hook y

```

```

SanJose3640A#

```

```

SanJose3640A# show voice dsp
DSP DSP DSPWARE CURR BOOT PAK TX/RX
TYPE NUM CH CODEC VERSION STATE STATE RST AI VOICEPORT TS ABORT PACK COUNT
=====
C542 001 01 g729r8 3.4.55 busy idle 0 0 3/0/0 NA 0 62487/61902
C542 002 01 g729r8 3.4.55 busy idle 0 0 3/0/1 NA 0 44362/44194
C542 003 01 g711ulaw 3.4.55 IDLE idle 0 0 3/1/0 NA 0 541/546
C542 004 01 g711ulaw 3.4.55 IDLE idle 0 0 3/1/1 NA 0 535/532

```

```

SanJose3640A#

```

[Raleigh路由器的驗證](#)

Raleigh路由器的驗證過程與San Jose路由器的驗證過程類似。

```
Raleigh3640A# show interface serial 1/0
Serial1/0 is up, line protocol is up
Hardware is QUICC Serial
Internet address is 192.168.1.2/24
MTU 1500 bytes, BW 1544 Kbit, DLY 20000 usec,
reliability 255/255, txload 1/255, rxload 1/255
Encapsulation PPP, loopback not set
Keepalive set (10 sec)
LCP Open
Open: IPCP, CDPCP
Last input 00:00:15, output 00:00:00, output hang never
Last clearing of "show interface" counters 00:12:33
Input queue: 0/75/0/0 (size/max/drops/flushes); Total output drops: 0
Queueing strategy: weighted fair
Output queue: 0/1000/64/0 (size/max total/threshold/drops)
Conversations 0/1/256 (active/max active/max total)
Reserved Conversations 1/1 (allocated/max allocated)
Available Bandwidth 1091 kilobits/sec
30 second input rate 0 bits/sec, 0 packets/sec
30 second output rate 0 bits/sec, 0 packets/sec
167 packets input, 6849 bytes, 0 no buffer
Received 0 broadcasts, 0 runts, 0 giants, 0 throttles
0 input errors, 0 CRC, 0 frame, 0 overrun, 0 ignored, 0 abort
169 packets output, 6907 bytes, 0 underruns
0 output errors, 0 collisions, 0 interface resets
0 output buffer failures, 0 output buffers swapped out
11 carrier transitions
DCD=up DSR=up DTR=up RTS=up CTS=up
```

Raleigh3640A#

```
Raleigh3640A#
Raleigh3640A#
Raleigh3640A#
Raleigh3640A# show call active voice
Total call-legs: 4
```

```
GENERIC:
SetupTime=209451 ms
Index=1
PeerAddress=1001
PeerSubAddress=
PeerId=1
PeerIfIndex=8
LogicalIfIndex=0
ConnectTime=209543
CallDuration=00:08:20
CallState=4
CallOrigin=2
ChargedUnits=0
InfoType=2
TransmitPackets=25054
TransmitBytes=501080
ReceivePackets=25008
ReceiveBytes=500160
VOIP:
ConnectionId[0x38D3783F 0x14F111CC 0x801CFDB1 0x2D0CC4A5]
IncomingConnectionId[0x38D3783F 0x14F111CC 0x801CFDB1 0x2D0CC4A5]
RemoteIPAddress=192.168.1.1
RemoteUDPPort=17210
```

RemoteSignallingIPAddress=192.168.1.1
RemoteSignallingPort=11006
RemoteMediaIPAddress=192.168.1.1
RemoteMediaPort=17210
RoundTripDelay=3 ms
SelectedQoS=best-effort
tx_DtmfRelay=h245-alphanumeric
FastConnect=TRUE

Separate H245 Connection=FALSE

H245 Tunneling=TRUE

SessionProtocol=cisco
SessionTarget=
OnTimeRvPlayout=497610
GapFillWithSilence=0 ms
GapFillWithPrediction=0 ms
GapFillWithInterpolation=0 ms
GapFillWithRedundancy=0 ms
HiWaterPlayoutDelay=70 ms
LoWaterPlayoutDelay=69 ms
ReceiveDelay=69 ms
LostPackets=0
EarlyPackets=1
LatePackets=0

VAD = disabled

CoderTypeRate=g729r8

CodecBytes=20
GENERIC:
SetupTime=209451 ms
Index=2

PeerAddress=2001

PeerSubAddress=
PeerId=2
PeerIfIndex=9
LogicalIfIndex=4
ConnectTime=209543

CallDuration=00:08:21

CallState=4
CallOrigin=1
ChargedUnits=0
InfoType=2
TransmitPackets=25074
TransmitBytes=501480
ReceivePackets=25120
ReceiveBytes=502400

TELE:

ConnectionId=[0x38D3783F 0x14F111CC 0x801CFDB1 0x2D0CC4A5]
IncomingConnectionId=[0x38D3783F 0x14F111CC 0x801CFDB1 0x2D0CC4A5]
TxDuration=502410 ms
VoiceTxDuration=502410 ms
FaxTxDuration=0 ms
CoderTypeRate=g729r8
NoiseLevel=0
ACOMLevel=1
OutSignalLevel=-41
InSignalLevel=-37
InfoActivity=2
ERLLevel=1
SessionTarget=
ImgPages=0
GENERIC:
SetupTime=210097 ms

Index=1
PeerAddress=2002
PeerSubAddress=
PeerId=3
PeerIfIndex=10
LogicalIfIndex=5
ConnectTime=210638
CallDuration=00:08:10
CallState=4
CallOrigin=2
ChargedUnits=0
InfoType=2
TransmitPackets=24606
TransmitBytes=492120
ReceivePackets=24605
ReceiveBytes=492100
TELE:
ConnectionId=[0x6C135AD4 0x14F311CC 0x8024CE4C 0xAA60AB15]
IncomingConnectionId=[0x6C135AD4 0x14F311CC 0x8024CE4C 0xAA60AB15]
TxDuration=492110 ms
VoiceTxDuration=492110 ms
FaxTxDuration=0 ms
CoderTypeRate=g729r8
NoiseLevel=0
ACOMLevel=0
OutSignalLevel=-46
InSignalLevel=-33
InfoActivity=2
ERLLevel=0
SessionTarget=
ImgPages=0
GENERIC:
SetupTime=210480 ms
Index=1
PeerAddress=1002
PeerSubAddress=
PeerId=1
PeerIfIndex=8
LogicalIfIndex=0
ConnectTime=210638
CallDuration=00:08:11
CallState=4
CallOrigin=1
ChargedUnits=0
InfoType=2
TransmitPackets=24587
TransmitBytes=491740
ReceivePackets=24664
ReceiveBytes=493280
VOIP:
ConnectionId[0x6C135AD4 0x14F311CC 0x8024CE4C 0xAA60AB15]
IncomingConnectionId[0x6C135AD4 0x14F311CC 0x8024CE4C 0xAA60AB15]
RemoteIPAddress=192.168.1.1
RemoteUDPPort=18884
RemoteSignallingIPAddress=192.168.1.1
RemoteSignallingPort=1720
RemoteMediaIPAddress=192.168.1.1
RemoteMediaPort=18884
RoundTripDelay=4 ms
SelectedQoS=best-effort
tx_DtmfRelay=h245-alphanumeric
FastConnect=TRUE

Separate H245 Connection=FALSE

H245 Tunneling=TRUE

SessionProtocol=cisco
SessionTarget=ipv4:192.168.1.1
OnTimeRvPlayout=487570
GapFillWithSilence=0 ms
GapFillWithPrediction=0 ms
GapFillWithInterpolation=0 ms
GapFillWithRedundancy=0 ms
HiWaterPlayoutDelay=70 ms
LoWaterPlayoutDelay=69 ms
ReceiveDelay=69 ms

LostPackets=0

EarlyPackets=1

LatePackets=0

VAD = disabled

CoderTypeRate=g729r8

CodecBytes=20Total call-legs: 4

Raleigh3640A#

Raleigh3640A#

Raleigh3640A# **show policy interface**

Serial1/0

Service-policy output: voice-policy

Class-map: voice-traffic (match-all)

113186 packets, 7289624 bytes

30 second offered rate 51000 bps, drop rate 0 bps

Match: access-group 102

Queueing

Strict Priority

Output Queue: Conversation 264

Bandwidth 51 (kbps) Burst 1275 (Bytes)

(pkts matched/bytes matched) 471/75864

(total drops/bytes drops) 0/0

Class-map: voice-signaling (match-all)

162 packets, 13339 bytes

30 second offered rate 0 bps, drop rate 0 bps

Match: access-group 103

Queueing

Output Queue: Conversation 265

Bandwidth 16 (kbps) Max Threshold 64 (packets)

(pkts matched/bytes matched) 162/13339

(depth/total drops/no-buffer drops) 0/0/0

Class-map: class-default (match-any)

194 packets, 16761 bytes

30 second offered rate 0 bps, drop rate 0 bps

Match: any

Queueing

Flow Based Fair Queueing

Maximum Number of Hashed Queues 256

(total queued/total drops/no-buffer drops) 0/0/0

Raleigh3640A#

Raleigh3640A# **show access-lists 102**

Extended IP access list 102

permit udp any any range 16384 32767 (**113963 matches**)

Raleigh3640A#

```

Raleigh3640A#
Raleigh3640A# show access-lists 102
Extended IP access list 102
permit udp any any range 16384 32767 (114093 matches)
Raleigh3640A#
Raleigh3640A#
Raleigh3640A# show access-lists 102
Extended IP access list 102
permit udp any any range 16384 32767 (114188 matches)
Raleigh3640A#
Raleigh3640A#
Raleigh3640A# show access-lists 102
Extended IP access list 102
permit udp any any range 16384 32767 (114404 matches)
Raleigh3640A#
Raleigh3640A#

```

```

Raleigh3640A#
Raleigh3640A# show voice call sum
PORT CODEC VAD VTSP STATE VPM STATE
=====
3/0/0 g729r8 n S_CONNECT FXSLS_CONNECT
3/0/1 g729r8 n S_CONNECT FXSLS_CONNECT
3/1/0 - - - FXOLS_ONHOOK
3/1/1 - - - FXOLS_ONHOOK

```

Raleigh3640A#

```

Raleigh3640A# show voice port sum
IN OUT
PORT CH SIG-TYPE ADMIN OPER STATUS STATUS EC
=====
3/0/0 -- fxs-ls up up off-hook idle y
3/0/1 -- fxs-ls up up off-hook idle y
3/1/0 -- fxo-ls up dorm idle on-hook y
3/1/1 -- fxo-ls up dorm idle on-hook y

```

Raleigh3640A#

```

Raleigh3640A#
Raleigh3640A# show voice dsp
DSP DSP DSPWARE CURR BOOT PAK TX/RX
TYPE NUM CH CODEC VERSION STATE STATE RST AI VOICEPORT TS ABORT PACK COUNT
=====
C542 001 01 g729r8 3.4.55 busy idle 0 0 3/0/0 NA 0 69615/68771
C542 002 01 g729r8 3.4.55 busy idle 0 0 3/0/1 NA 0 51511/51520
C542 003 01 g711ulaw 3.4.55 IDLE idle 0 0 3/1/0 NA 0 541/546
C542 004 01 g711ulaw 3.4.55 IDLE idle 0 0 3/1/1 NA 0 535/532

```

Raleigh3640A#

[疑難排解](#)

本節提供的資訊可用於對組態進行疑難排解。

[指令疑難排解](#)

[輸出直譯器工具](#)(僅供註冊客戶使用)支援某些show命令，此工具可讓您檢視show命令輸出的分析。

注意：發出debug指令之前，請參閱[有關Debug指令的重要資訊](#)。

- **debug voip ccapi inout** — 通過呼叫控制應用程式程式設計介面(API)跟蹤執行路徑。
- **debug vpm all** — 在所有虛擬語音埠模組(VPM)區域啟用調試。
- **show log** — 顯示已啟用的調試的輸出。

由於Raleigh端和San Jose端在配置和設定方面非常相似，因此本文檔僅顯示了San Jose路由器的debug voip ccapi inout和debug vpm all命令。

如果呼叫建立存在問題，請發出本節列出的debug命令。比較此處的輸出和資訊。您可以使用軟體（如「Compare it」或「Beyond Compare」）來比較兩個文本檔案並找出差異。此處的輸出可作為呼叫成功的參考。

首先，確定呼叫期間路由器上發生的情況。發出debug voip ccapi inout和debug vpm all命令。此處顯示show debug命令問題的輸出，顯示在San Jose路由器中啟用debug vpm all命令。您可以確定debug vpm all命令的啟用，因為除了debug voip ccapi inout命令外，輸出還顯示四個啟用的debug命令。當您發出debug vpm all命令時，這四個命令可自動啟用。

注意：在生成所需的輸出後，必須禁用這些debug命令。發出undebug all指令時，停用debug指令。如果不啟用調試，則可能會遇到路由器效能問題。具有啟用的調試命令會消耗CPU資源。

```
SanJose3640A# show debug
voip:
voip ccAPI function enter/exit debugging is on
Voice Port Module session debugging is on
Voice Port Module DSP message debugging is on
Voice Port Module error debugging is on
Voice Port Module signaling debugging is on
Voice Port Module voaal2 debugging is on
Voice Port Module trunk conditioning is on
SanJose3640A#
SanJose3640A#
SanJose3640A#
SanJose3640A#
SanJose3640A#! Call from 1001 to 2001
SanJose3640A#
SanJose3640A#
SanJose3640A#
SanJose3640A#
*Mar 1 00:05:07.675: htsp_dsp_message: SEND/RESP_SIG_STATUS: state=0xC timestamp=33146
systemtime=30767
*Mar 1 00:05:07.679: htsp_process_event: [3/0/0, FXSLS_ONHOOK, E_DSP_SIG_
1100] fxscls_onhook_offhook htsp_setup_ind
*Mar 1 00:05:07.679: [3/0/0] get_local_station_id calling num= calling name= calling
time=00/00 00:00
*Mar 1 00:05:07.679: cc_api_call_setup_ind (vdbPtr=0x6217C270, callInfo={called=,called_
oct3=0x81,calling=,calling_oct3=0x0,calling_oct3a=0x0,calling_xlated=false,
subscriber_type_str=RegularLine,fdest=0,peer_tag=2, prog_ind=3,callingIE_present 0},
callID=0x61DAB4F4)
*Mar 1 00:05:07.679: cc_api_call_setup_ind calling number is null, answer addr dest
pattern 1001 e164_ans_addr 0 e164_dest_pattern 1
*Mar 1 00:05:07.679: cc_api_call_setup_ind valid dest pattern, copying 1001 to calling
number
*Mar 1 00:05:07.679: cc_api_call_setup_ind type 3 , prot 0
*Mar 1 00:05:07.683: cc_process_call_setup_ind (event=0x62107860)
*Mar 1 00:05:07.683: >>>>CCAPI handed cid 5 with tag 2 to app "DEFAULT"
```

*Mar 1 00:05:07.683: sess_appl: ev(24=CC_EV_CALL_SETUP_IND), cid(5), disp(0)
*Mar 1 00:05:07.683: sess_appl: ev(SSA_EV_CALL_SETUP_IND), cid(5), disp(0)
*Mar 1 00:05:07.683: ssaCallSetupInd
*Mar 1 00:05:07.683: ccCallSetContext (callID=0x5, context=0x620005E8)
*Mar 1 00:05:07.683: ssaCallSetupInd cid(5), st(SSA_CS_MAPPING),oldst(0),
ev(24)ev->e.evCallSetupInd.nCallInfo.finalDestFlag = 0
*Mar 1 00:05:07.683: ccCallSetupAck (callID=0x5)
*Mar 1 00:05:07.683: ccCallReportDigits (callID=0x5, enable=0x1)
*Mar 1 00:05:07.683: cc_api_call_report_digits_done (vdbPtr=0x6217C270, callID=0x5,
disp=0)
*Mar 1 00:05:07.683: sess_appl: ev(53=CC_EV_CALL_REPORT_DIGITS_DONE), cid(5), disp(0)
*Mar 1 00:05:07.683: cid(5)st(SSA_CS_MAPPING)ev(SSA_EV_CALL_REPORT_DIGITS_DONE)
oldst(SSA_CS_MAPPING)cfid(-1)csz(0)in(1)fDest(0)
*Mar 1 00:05:07.683: ssaReportDigitsDone cid(5) peer list: (empty)
*Mar 1 00:05:07.683: ssaReportDigitsDone callid=5 Enable succeeded
*Mar 1 00:05:07.687: ccGenerateTone (callID=0x5 tone=8)
*Mar 1 00:05:07.687: dsp_digit_collect_on: [3/0/0] packet_len=20 channel_id=128 packet_id=
35 min_inter_delay=240 max_inter_delay=9760 mim_make_time=10 max_make_time=100
min_brake_time=10 max_brake_time=100
*Mar 1 00:05:07.687: dsp_soutput: [3/0/0]
*Mar 1 00:05:07.687: dsp_digit_collect_on: [3/0/0] packet_len=20 channel_id=128 packet_id=
35 min_inter_delay=240 max_inter_delay=9760 mim_make_time=10 max_make_time=100
min_brake_time=10 max_brake_time=100
*Mar 1 00:05:07.687: dsp_soutput: [3/0/0]
*Mar 1 00:05:07.687: htsp_process_event: [3/0/0, FXSLS_WAIT_SETUP_ACK, E_HTSP_SETUP_ACK]
*Mar 1 00:05:09.455: cc_api_call_digit_begin (dstVdbPtr=0x0, dstCallId=0xFFFFFFFF,
srcCallId=0x5, digit=2, digit_begin_flags=0x1, rtp_timestamp=0xEB32A6E0
rtp_expiration=0x0, dest_mask=0x1)
*Mar 1 00:05:09.455: sess_appl: ev(10=CC_EV_CALL_DIGIT_BEGIN), cid(5), disp(0)
*Mar 1 00:05:09.455: cid(5)st(SSA_CS_MAPPING)ev(SSA_EV_DIGIT_BEGIN)
oldst(SSA_CS_MAPPING)cfid(-1)csz(0)in(1)fDest(0)
*Mar 1 00:05:09.455: ssaIgnore cid(5), st(SSA_CS_MAPPING),oldst(0), ev(10)
*Mar 1 00:05:09.515: cc_api_call_digit_end (dstVdbPtr=0x0, dstCallId=0xFFFFFFFF,
srcCallId=0x5,digit=2,duration=95,xruleCallingTag=0,xruleCalledTag=0, dest_mask=0x1),
digit_tone_mode=0
*Mar 1 00:05:09.515: sess_appl: ev(9=CC_EV_CALL_DIGIT_END), cid(5), disp(0)
*Mar 1 00:05:09.515: cid(5)st(SSA_CS_MAPPING)ev(SSA_EV_CALL_DIGIT)
oldst(SSA_CS_MAPPING)cfid(-1)csz(0)in(1)fDest(0)
*Mar 1 00:05:09.515: ssaDigit
*Mar 1 00:05:09.515: ssaDigit, 0. sct->digit , sct->digit len 0, usrDigit 2,
digit_tone_mode=0
*Mar 1 00:05:09.515: ssaDigit,1. callinfo.called , digit 2, callinfo.calling 1001,
xrulecallingtag 0, xrulecalledtag 0
*Mar 1 00:05:09.515: ssaDigit, 7. callinfo.calling 1001, sct->digit 2, result 1
*Mar 1 00:05:09.635: cc_api_call_digit_begin (dstVdbPtr=0x0, dstCallId=0xFFFFFFFF,
srcCallId=0x5, digit=0, digit_begin_flags=0x1, rtp_timestamp=0xEB32A6E0
rtp_expiration=0x0, dest_mask=0x1)
*Mar 1 00:05:09.635: sess_appl: ev(10=CC_EV_CALL_DIGIT_BEGIN), cid(5), disp(0)
*Mar 1 00:05:09.635: cid(5)st(SSA_CS_MAPPING)ev(SSA_EV_DIGIT_BEGIN)
oldst(SSA_CS_MAPPING)cfid(-1)csz(0)in(1)fDest(0)
*Mar 1 00:05:09.635: ssaIgnore cid(5), st(SSA_CS_MAPPING),oldst(0), ev(10)
*Mar 1 00:05:09.695: cc_api_call_digit_end (dstVdbPtr=0x0, dstCallId=0xFFFFFFFF,
srcCallId=0x5,digit=0,duration=95,xruleCallingTag=0,xruleCalledTag=0, dest_mask=0x1),
digit_tone_mode=0
*Mar 1 00:05:09.695: sess_appl: ev(9=CC_EV_CALL_DIGIT_END), cid(5), disp(0)
*Mar 1 00:05:09.695: cid(5)st(SSA_CS_MAPPING)ev(SSA_EV_CALL_DIGIT)
oldst(SSA_CS_MAPPING)cfid(-1)csz(0)in(1)fDest(0)
*Mar 1 00:05:09.695: ssaDigit
*Mar 1 00:05:09.695: ssaDigit, 0. sct->digit 2, sct->digit len 1, usrDigit 0,
digit_tone_mode=0
*Mar 1 00:05:09.695: ssaDigit,1. callinfo.called , digit 20, callinfo.calling 1001,
xrulecallingtag 0, xrulecalledtag 0
*Mar 1 00:05:09.695: ssaDigit, 7. callinfo.calling 1001, sct->digit 20, result 1
*Mar 1 00:05:09.815: cc_api_call_digit_begin (dstVdbPtr=0x0, dstCallId=0xFFFFFFFF,

```
srcCallId=0x5, digit=0, digit_begin_flags=0x1, rtp_timestamp=0xEB32A6E0
rtp_expiration=0x0, dest_mask=0x1)
*Mar 1 00:05:09.815: sess_appl: ev(10=CC_EV_CALL_DIGIT_BEGIN), cid(5), disp(0)
*Mar 1 00:05:09.815: cid(5)st(SSA_CS_MAPPING)ev(SSA_EV_DIGIT_BEGIN)
oldst(SSA_CS_MAPPING)cfid(-1)csz(0)in(1)fDest(0)
*Mar 1 00:05:09.815: ssaIgnore cid(5), st(SSA_CS_MAPPING),oldst(0), ev(10)
*Mar 1 00:05:09.875: cc_api_call_digit_end (dstVdbPtr=0x0, dstCallId=0xFFFFFFFF,
srcCallId=0x5,digit=0,duration=95,xruleCallingTag=0,xruleCalledTag=0, dest_mask=0x1),
digit_tone_mode=0
*Mar 1 00:05:09.875: sess_appl: ev(9=CC_EV_CALL_DIGIT_END), cid(5), disp(0)
*Mar 1 00:05:09.875: cid(5)st(SSA_CS_MAPPING)ev(SSA_EV_CALL_DIGIT)
oldst(SSA_CS_MAPPING)cfid(-1)csz(0)in(1)fDest(0)
*Mar 1 00:05:09.875: ssaDigit
*Mar 1 00:05:09.875: ssaDigit, 0. sct->digit 20, sct->digit len 2, usrDigit 0,
digit_tone_mode=0
*Mar 1 00:05:09.875: ssaDigit,1. callinfo.called , digit 200, callinfo.calling 1001,
xrulecallingtag 0, xrulecalledtag 0
*Mar 1 00:05:09.875: ssaDigit, 7. callinfo.calling 1001, sct->digit 200, result 1
*Mar 1 00:05:09.995: cc_api_call_digit_begin (dstVdbPtr=0x0, dstCallId=0xFFFFFFFF,
srcCallId=0x5, digit=1, digit_begin_flags=0x1, rtp_timestamp=0xEB32A6E0
rtp_expiration=0x0, dest_mask=0x1)
*Mar 1 00:05:09.995: sess_appl: ev(10=CC_EV_CALL_DIGIT_BEGIN), cid(5), disp(0)
*Mar 1 00:05:09.995: cid(5)st(SSA_CS_MAPPING)ev(SSA_EV_DIGIT_BEGIN)
oldst(SSA_CS_MAPPING)cfid(-1)csz(0)in(1)fDest(0)
*Mar 1 00:05:09.995: ssaIgnore cid(5), st(SSA_CS_MAPPING),oldst(0), ev(10)
*Mar 1 00:05:10.055: cc_api_call_digit_end (dstVdbPtr=0x0, dstCallId=0xFFFFFFFF,
srcCallId=0x5,digit=1,duration=95,xruleCallingTag=0,xruleCalledTag=0, dest_mask=0x1),
digit_tone_mode=0
*Mar 1 00:05:10.055: sess_appl: ev(9=CC_EV_CALL_DIGIT_END), cid(5), disp(0)
*Mar 1 00:05:10.055: cid(5)st(SSA_CS_MAPPING)ev(SSA_EV_CALL_DIGIT)
oldst(SSA_CS_MAPPING)cfid(-1)csz(0)in(1)fDest(0)
*Mar 1 00:05:10.055: ssaDigit
*Mar 1 00:05:10.055: ssaDigit, 0. sct->digit 200, sct->digit len 3, usrDigit 1,
digit_tone_mode=0
*Mar 1 00:05:10.055: ssaDigit,1. callinfo.called , digit 2001, callinfo.calling 1001,
xrulecallingtag 0, xrulecalledtag 0
*Mar 1 00:05:10.055: ssaDigit, 7. callinfo.calling 1001, sct->digit 2001, result 0
*Mar 1 00:05:10.055: ccCallReportDigits (callID=0x5, enable=0x0)
*Mar 1 00:05:10.055: cc_api_call_report_digits_done (vdbPtr=0x6217C270, callID=0x5,
disp=0)
*Mar 1 00:05:10.055: ssaSetupPeer cid(5) peer list: tag(1) called number (2001)
*Mar 1 00:05:10.055: ssaSetupPeer cid(5), destPat(2001), matched(1), prefix(),
peer(622FB888), peer->encapType (2)
*Mar 1 00:05:10.055: ccCallProceeding (callID=0x5, prog_ind=0x0)
*Mar 1 00:05:10.059: ccCallSetupRequest (Inbound call = 0x5, outbound peer =1, dest=,
params=0x621129C8 mode=0, *callID=0x6
2112D38, prog_ind = 3) callingIE_present 0
*Mar 1 00:05:10.059: ccCallSetupRequest numbering_type 0x81
*Mar 1 00:05:10.059: ccCallSetupRequest encapType 2 clid_restrict_disable 1 null_orig_clg
1 clid_transparent 0 callingNumber 1001
*Mar 1 00:05:10.059: dest pattern 2..., called 2001, digit_strip 0
*Mar 1 00:05:10.059: callingNumber=1001, calledNumber=2001, redirectNumber= display_info=
calling_oct3a=0
*Mar 1 00:05:10.059: accountNumber=, finalDestFlag=0,
guid=3f30.bb8e.14ef.11cc.8008.fdb1.2d0c.c4a5
*Mar 1 00:05:10.059: peer_tag=1
*Mar 1 00:05:10.059: ccIFCallSetupRequestPrivate: (vdbPtr=0x620BCAF0, dest=,
callParams={called=2001,called_oct3=0x81, calling=1001,calling_oct3=0x0, calling_xlated=
false, subscriber_type_str=RegularLine, fdest=0, voice_peer_tag=1},mode=0x0) vdbP
tr type = 1
*Mar 1 00:05:10.059: ccIFCallSetupRequestPrivate: (vdbPtr=0x620BCAF0, dest=, callParams=
{called=2001, called_oct3 0x81, calling=1001,calling_oct3 0x0, calling_xlated=false,
fdest=0, voice_peer_tag=1}, mode=0x0, xltrc=-5)
*Mar 1 00:05:10.059: ccSaveDialpeerTag (callID=0x5, dialpeer_tag=0x1)
```

*Mar 1 00:05:10.059: ccCallSetContext (callID=0x6, context=0x61DAD8A0)
*Mar 1 00:05:10.059: sess_appl: ev(53=CC_EV_CALL_REPORT_DIGITS_DONE), cid(5), disp(0)
*Mar 1 00:05:10.059: cid(5)st(SSA_CS_CALL_SETTING)ev(SSA_EV_CALL_REPORT_DIGITS_DONE)
oldst(SSA_CS_MAPPING)cfid(-1)csize(0)in(1)fDest(0)
*Mar 1 00:05:10.059: -cid2(6)st2(SSA_CS_CALL_SETTING)oldst2(SSA_CS_MAPPING)
*Mar 1 00:05:10.059: ssaReportDigitsDone cid(5) peer list: (empty)
*Mar 1 00:05:10.059: ssaReportDigitsDone callid=5 Reporting disabled.
*Mar 1 00:05:10.063: dsp_digit_collect_off: [3/0/0] packet_len=8 channel_id=128 packet_id=
36
*Mar 1 00:05:10.063: dsp_soutput: [3/0/0]
*Mar 1 00:05:10.063: htsp_process_event: [3/0/0, FXSLS_OFFHOOK, E_HTSP_PROCEEDING]
*Mar 1 00:05:10.095: cc_api_call_proceeding(vdbPtr=0x620BCAF0, callID=0x6,
prog_ind=0x0)
*Mar 1 00:05:10.099: sess_appl: ev(21=CC_EV_CALL_PROCEEDING), cid(6), disp(0)
*Mar 1 00:05:10.099: cid(6)st(SSA_CS_CALL_SETTING)ev(SSA_EV_CALL_PROCEEDING)
oldst(SSA_CS_MAPPING)cfid(-1)csize(0)in(0)fDest(0)
*Mar 1 00:05:10.099: -cid2(5)st2(SSA_CS_CALL_SETTING)oldst2(SSA_CS_CALL_SETTING)
*Mar 1 00:05:10.099: ssaCallProc
*Mar 1 00:05:10.099: ccGetDialpeerTag (callID=0x5)
*Mar 1 00:05:10.099: ssaIgnore cid(6), st(SSA_CS_CALL_SETTING),oldst(1), ev(21)
*Mar 1 00:05:10.103: cc_api_call_cut_progress(vdbPtr=0x620BCAF0, callID=0x6, prog_ind=0x8,
sig_ind=0x1)
*Mar 1 00:05:10.103: sess_appl: ev(22=CC_EV_CALL_PROGRESS), cid(6), disp(0)
*Mar 1 00:05:10.107: cid(6)st(SSA_CS_CALL_SETTING)ev(SSA_EV_CALL_PROGRESS)
oldst(SSA_CS_CALL_SETTING)cfid(-1)csize(0)in(0)fDest(0)
*Mar 1 00:05:10.107: -cid2(5)st2(SSA_CS_CALL_SETTING)oldst2(SSA_CS_CALL_SETTING)
*Mar 1 00:05:10.107: ssaCutProgress
*Mar 1 00:05:10.107: ccGetDialpeerTag (callID=0x5)
*Mar 1 00:05:10.107: ccCallCutProgress (callID=0x5, prog_ind=0x8, sig_ind=0x1)
*Mar 1 00:05:10.107: **ccConferenceCreate** (confID=0x6211310C, callID1=0x5,
callID2=0x6, tag=0x0)
*Mar 1 00:05:10.107: cc_api_bridge_done (confID=0x3, srcIF=0x620BCAF0, srcCallID=0x6,
dstCallID=0x5, disposition=0, tag=0x0)htsp_alert_notify
*Mar 1 00:05:10.107: cc_api_bridge_done (confID=0x3, srcIF=0x6217C270, srcCallID=0x5,
dstCallID=0x6, disposition=0, tag=0x0)
*Mar 1 00:05:10.107: cc_api_caps_ind (dstVdbPtr=0x620BCAF0, dstCallId=0x6, srcCallId=0x5,
caps={codec=0x2EBFB, fax_rate=0x7F, vad=0x3, modem=0x2 codec_bytes=0, signal_type=3})
*Mar 1 00:05:10.107: cc_api_caps_ind (Playout: mode 1, initial 60,min 40, max 200)
*Mar 1 00:05:10.111: cc_api_caps_ind (dstVdbPtr=0x6217C270, dstCallId=0x5, srcCallId=0x6,
caps={codec=0x4, fax_rate=0x2, vad=0x1, modem=0x0 codec_bytes=20, signal_type=2})
*Mar 1 00:05:10.111: cc_api_caps_ind (Playout: mode 1, initial 60,min 40, max 200)
*Mar 1 00:05:10.111: cc_api_caps_ack (dstVdbPtr=0x6217C270, dstCallId=0x5, srcCallId=0x6,
caps={codec=0x4, fax_rate=0x2, vad=0x1, modem=0x0 codec_bytes=20, signal_type=2,
seq_num_start=9062})
*Mar 1 00:05:10.111: cc_api_caps_ack (dstVdbPtr=0x620BCAF0, dstCallId=0x6, srcCallId=0x5,
caps={codec=0x4, fax_rate=0x2, vad=0x1, modem=0x0 codec_bytes=20, signal_type=2,
seq_num_start=9062})
*Mar 1 00:05:10.111: cc_api_voice_mode_event , callID=0x5
*Mar 1 00:05:10.111: Call Pointer =620005E8
*Mar 1 00:05:10.115: cc_api_caps_ind (dstVdbPtr=0x6217C270, dstCallId=0x5, srcCallId=0x6,
caps={codec=0x4, fax_rate=0x2, vad=0x1, modem=0x0 codec_bytes=20, signal_type=2})
*Mar 1 00:05:10.115: cc_api_caps_ind (Playout: mode 1, initial 60,min 40, max 200)
*Mar 1 00:05:10.115: cc_api_caps_ack (dstVdbPtr=0x6217C270, dstCallId=0x5, srcCallId=0x6,
caps={codec=0x4, fax_rate=0x2, vad=0x1, modem=0x0 codec_bytes=20, signal_type=2,
seq_num_start=9062})
*Mar 1 00:05:10.123: cc_api_caps_ack (dstVdbPtr=0x620BCAF0, dstCallId=0x6, srcCallId=0x5,
caps={codec=0x4, fax_rate=0x2, vad=0x1, modem=0x0 codec_bytes=20, signal_type=2,
seq_num_start=9062})
*Mar 1 00:05:10.123: cc_api_voice_mode_event , callID=0x5
*Mar 1 00:05:10.123: Call Pointer =620005E8
*Mar 1 00:05:10.123: htsp_process_event: [3/0/0, FXSLS_OFFHOOK, E_HTSP_VOICE_CUT_THROUGH]
*Mar 1 00:05:10.123: htsp_process_event: [3/0/0, FXSLS_OFFHOOK, E_HTSP_VOICE_CUT_THROUGH]
*Mar 1 00:05:10.123: sess_appl: ev(29=CC_EV_CONF_CREATE_DONE), cid(5), disp(0)
*Mar 1 00:05:10.123: cid(5)st(SSA_CS_CONFERENCE_PROGRESS)ev(SSA_EV_CONF_CREATE_DONE)

oldst(SSA_CS_CALL_SETTING)cfid(3)csize(0)in(1)fDest(0)

*Mar 1 00:05:10.127: -cid2(6)st2(SSA_CS_CONFERENCING_PROGRESS)oldst2(SSA_CS_CALL_SETTING)

*Mar 1 00:05:10.127: ssaConfCreateDoneAlert

*Mar 1 00:05:10.127: sess_appl: ev(51=CC_EV_VOICE_MODE_DONE), cid(5), disp(0)

*Mar 1 00:05:10.127: cid(5)st(SSA_CS_CONFERENCED_ALERT)ev(SSA_EV_VOICE_MODE_DONE)

oldst(SSA_CS_CONFERENCING_PROGRESS)cfid(3)csize(0)in(1)fDest(0)

*Mar 1 00:05:10.127: -cid2(6)st2(SSA_CS_CONFERENCED_ALERT)oldst2(SSA_CS_CALL_SETTING)

*Mar 1 00:05:10.127: ssaIgnore cid(5), st(SSA_CS_CONFERENCED_ALERT),oldst(4), ev(51)

*Mar 1 00:05:10.127: sess_appl: ev(51=CC_EV_VOICE_MODE_DONE), cid(5), disp(2)

*Mar 1 00:05:10.127: cid(5)st(SSA_CS_CONFERENCED_ALERT)ev(SSA_EV_VOICE_MODE_DONE)

oldst(SSA_CS_CONFERENCED_ALERT)cfid(3)csize(0)in(1)fDest(0)

*Mar 1 00:05:10.127: -cid2(6)st2(SSA_CS_CONFERENCED_ALERT)oldst2(SSA_CS_CALL_SETTING)

*Mar 1 00:05:10.127: ssaIgnore cid(5), st(SSA_CS_CONFERENCED_ALERT),oldst(4), ev(51)

*Mar 1 00:05:10.127: cc_process_notify_bridge_done (event=0x6210BDB8)

*Mar 1 00:05:10.131: cc_api_caps_ind (dstVdbPtr=0x6217C270, dstCallId=0x5, srcCallId=0x6, caps={codec=0x4, fax_rate=0x2, vad=0x1, modem=0x0 codec_bytes=20, signal_type=2})

*Mar 1 00:05:10.131: cc_api_caps_ind (Playout: mode 1, initial 60,min 40, max 200)

*Mar 1 00:05:10.131: cc_api_caps_ack (dstVdbPtr=0x6217C270, dstCallId=0x5, srcCallId=0x6, caps={codec=0x4, fax_rate=0x2, vad=0x1, modem=0x0 codec_bytes=20, signal_type=2, seq_num_start=9063})

*Mar 1 00:05:10.131: cc_api_caps_ind (dstVdbPtr=0x6217C270, dstCallId=0x5, srcCallId=0x6, caps={codec=0x4, fax_rate=0x2, vad=0x1, modem=0x0 codec_bytes=20, signal_type=2})

*Mar 1 00:05:10.131: cc_api_caps_ind (Playout: mode 1, initial 60,min 40, max 200)

*Mar 1 00:05:10.131: cc_api_caps_ack (dstVdbPtr=0x6217C270, dstCallId=0x5, srcCallId=0x6, caps={codec=0x4, fax_rate=0x2, vad=0x1, modem=0x0 codec_bytes=20, signal_type=2, seq_num_start=9063})

*Mar 1 00:05:10.135: cc_api_caps_ack (dstVdbPtr=0x620BCAF0, dstCallId=0x6, srcCallId=0x5, caps={codec=0x4, fax_rate=0x2, vad=0x1, modem=0x0 codec_bytes=20, signal_type=2, seq_num_start=9063})

*Mar 1 00:05:10.135: cc_api_voice_mode_event , callID=0x5

*Mar 1 00:05:10.135: Call Pointer =620005E8

***Mar 1 00:05:10.135: cc_api_caps_ack (dstVdbPtr=0x620BCAF0, dstCallId=0x6, srcCallId=0x5, caps={codec=0x4, fax_rate=0x2, vad=0x1, modem=0x0 codec_bytes=20, signal_type=2, seq_num_start=9063})**

*Mar 1 00:05:10.135: cc_api_voice_mode_event , callID=0x5

*Mar 1 00:05:10.135: Call Pointer =620005E8

*Mar 1 00:05:10.135: htsp_process_event: [3/0/0, FXSLS_OFFHOOK, E_HTSP_VOICE_CUT_THROUGH]

*Mar 1 00:05:10.135: htsp_process_event: [3/0/0, FXSLS_OFFHOOK, E_HTSP_VOICE_CUT_THROUGH]

*Mar 1 00:05:10.135: sess_appl: ev(51=CC_EV_VOICE_MODE_DONE), cid(5), disp(0)

*Mar 1 00:05:10.135: cid(5)st(SSA_CS_CONFERENCED_ALERT)ev(SSA_EV_VOICE_MODE_DONE)

oldst(SSA_CS_CONFERENCED_ALERT)cfid(3)csize(0)in(1)fDest(0)

*Mar 1 00:05:10.135: -cid2(6)st2(SSA_CS_CONFERENCED_ALERT)oldst2(SSA_CS_CALL_SETTING)

*Mar 1 00:05:10.135: ssaIgnore cid(5), st(SSA_CS_CONFERENCED_ALERT),oldst(4), ev(51)

*Mar 1 00:05:10.135: sess_appl: ev(51=CC_EV_VOICE_MODE_DONE), cid(5), disp(0)

*Mar 1 00:05:10.135: cid(5)st(SSA_CS_CONFERENCED_ALERT)ev(SSA_EV_VOICE_MODE_DONE)

oldst(SSA_CS_CONFERENCED_ALERT)cfid(3)csize(0)in(1)fDest(0)

*Mar 1 00:05:10.139: -cid2(6)st2(SSA_CS_CONFERENCED_ALERT)oldst2(SSA_CS_CALL_SETTING)

*Mar 1 00:05:10.139: ssaIgnore cid(5), st(SSA_CS_CONFERENCED_ALERT),oldst(4), ev(51)

*Mar 1 00:05:18.303: cc_api_call_connected(vdbPtr=0x620BCAF0, callID=0x6), prog_ind = 2cc_api_call_connected: setting callEntry->connected to TRUE

*Mar 1 00:05:18.303: sess_appl: ev(8=CC_EV_CALL_CONNECTED), cid(6), disp(0)

*Mar 1 00:05:18.303: cid(6)st(SSA_CS_CONFERENCED_ALERT)ev(SSA_EV_CALL_CONNECTED)

oldst(SSA_CS_CALL_SETTING)cfid(3)csize(0)in(0)fDest(0)

*Mar 1 00:05:18.307: -cid2(5)st2(SSA_CS_CONFERENCED_ALERT)oldst2(SSA_CS_CONFERENCED_ALERT)

*Mar 1 00:05:18.307: ssaConnectAlert

*Mar 1 00:05:18.307: ccGetDialpeerTag (callID=0x5)

***Mar 1 00:05:18.307: ccCallConnect (callID=0x5), prog_ind = 2ccCallConnect: setting callEntry->connected to TRUE**

*Mar 1 00:05:18.307: ssaFlushPeerTagQueue cid(5) peer list: (empty)htsp_connect: no_offhook 0

*Mar 1 00:05:18.307: htsp_process_event: [3/0/0, FXSLS_OFFHOOK, E_HTSP_CONNECT]fxsلس_offhook_connect

*Mar 1 00:05:18.307: [3/0/0] set signal state = 0x6 timestamp = 0
*Mar 1 00:05:18.307: dsp_set_sig_state: [3/0/0] packet_len=12 channel_id=128 packet_id=39
state=0x6 timestamp=0x0
*Mar 1 00:05:18.307: dsp_soutput: [3/0/0]
SanJose3640A#
SanJose3640A#
SanJose3640A#
SanJose3640A#! call connected
SanJose3640A#
SanJose3640A#
SanJose3640A#
SanJose3640A#
SanJose3640A#! 1001 disconnecting the call
SanJose3640A#
SanJose3640A#
SanJose3640A#
SanJose3640A#
*Mar 1 00:05:57.019: htsp_dsp_message: SEND/RESP_SIG_STATUS: state=0x4 timestamp=16952
systime=35702
*Mar 1 00:05:57.019: htsp_process_event: [3/0/0, FXSLS_CONNECT, E_DSP_SIG_0100]fxspls_
offhook_onhook, HF duration=500
*Mar 1 00:05:57.023: htsp_timer - 500 msec
*Mar 1 00:05:57.523: htsp_process_event: [3/0/0, FXSLS_CONNECT, E_HTSP_EVENT_TIMER]fxspls_
connect_wait_release_req
*Mar 1 00:05:57.523: htsp_timer_stop
*Mar 1 00:05:57.523: cc_api_call_disconnected(vdbPtr=0x6217C270, callID=0x5, cause=0x10)
*Mar 1 00:05:57.523: sess_appl: ev(11=CC_EV_CALL_DISCONNECTED), cid(5), disp(0)
*Mar 1 00:05:57.523: cid(5)st(SSA_CS_ACTIVE)ev(SSA_EV_CALL_DISCONNECTED)
oldst(SSA_CS_CONFERENCED_ALERT)cfid(3)csize(0)in(1)fDest(0)
*Mar 1 00:05:57.523: -cid2(6)st2(SSA_CS_ACTIVE)oldst2(SSA_CS_CONFERENCED_ALERT)
*Mar 1 00:05:57.523: ssa: Disconnected cid(5) state(5) cause(0x10)
*Mar 1 00:05:57.523: ccConferenceDestroy (confID=0x3, tag=0x0)
*Mar 1 00:05:57.523: cc_api_bridge_drop_done (confID=0x3, srcIF=0x620BCAF0, srcCallID=0x6,
dstCallID=0x5, disposition=0 tag=0x0)
*Mar 1 00:05:57.523: cc_api_bridge_drop_done (confID=0x3, srcIF=0x6217C270, srcCallID=0x5,
dstCallID=0x6, disposition=0 tag=0x0)
*Mar 1 00:05:57.523: sess_appl: ev(30=CC_EV_CONF_DESTROY_DONE), cid(5), disp(0)
*Mar 1 00:05:57.523: cid(5)st(SSA_CS_CONF_DESTROYING)ev(SSA_EV_CONF_DESTROY_DONE)
oldst(SSA_CS_ACTIVE)cfid(-1)csize(0)in(1)fDest(0)
*Mar 1 00:05:57.527: -cid2(6)st2(SSA_CS_CONF_DESTROYING)oldst2(SSA_CS_CONFERENCED_ALERT)
*Mar 1 00:05:57.527: ssaConfDestroyDone
*Mar 1 00:05:57.527: ccCallDisconnect (callID=0x5, cause=0x10 tag=0x0)
*Mar 1 00:05:57.527: ccCallDisconnect: existing_cause = 0x0, **new_cause = 0x10**
*Mar 1 00:05:57.527: ccCallDisconnect (callID=0x6, cause=0x10 tag=0x0)
*Mar 1 00:05:57.527: ccCallDisconnect: existing_cause = 0x0, new_cause = 0x10htsp_release_
req: cause 16, no_onhook 0
*Mar 1 00:05:57.531: htsp_process_event: [3/0/0, FXSLS_WAIT_RELEASE_REQ,
E_HTSP_RELEASE_REQ] fxspls_waitrls_req_rls
*Mar 1 00:05:57.531: [3/0/0] set signal state = 0x4 timestamp = 0
*Mar 1 00:05:57.531: dsp_set_sig_state: [3/0/0] packet_len=12 channel_id=128 packet_id=39
state=0x4 timestamp=0x0
*Mar 1 00:05:57.531: dsp_soutput: [3/0/0]htsp_report_onhook_sig
*Mar 1 00:05:57.531: cc_api_call_feature: (vdbPtr=0x6217C270, callID=0x5,
feature_ind.type=5

*Mar 1 00:05:57.535: cc_api_call_disconnect_done(vdbPtr=0x6217C270, callID=0x5, disp=0,
tag=0x0)
*Mar 1 00:05:57.535: hdsprm_close_cleanup
*Mar 1 00:05:57.535: sess_appl: ev(28=CC_EV_CALL_FEATURE), cid(5), disp(0)
*Mar 1 00:05:57.535: cid(5)st(SSA_CS_DISCONNECTING)ev(SSA_EV_CALL_FEATURE)
oldst(SSA_CS_CONF_DESTROYING)cfid(-1)csize(0)in(1)fDest(0)
*Mar 1 00:05:57.535: -cid2(6)st2(SSA_CS_DISCONNECTING)oldst2(SSA_CS_CONFERENCED_ALERT)
*Mar 1 00:05:57.535: ssaIgnore cid(5), st(SSA_CS_DISCONNECTING),oldst(7), ev(28)

```
*Mar 1 00:05:57.539: sess_appl: ev(12=CC_EV_CALL_DISCONNECT_DONE), cid(5), disp(0)
*Mar 1 00:05:57.539: cid(5)st(SSA_CS_DISCONNECTING)ev(SSA_EV_CALL_DISCONNECT_DONE)
  oldst(SSA_CS_DISCONNECTING)cfid(-1)csz(0)in(1)fDest(0)
*Mar 1 00:05:57.539: -cid2(6)st2(SSA_CS_DISCONNECTING)oldst2(SSA_CS_CONFERENCED_ALERT)
*Mar 1 00:05:57.539: ssaDisconnectDone
*Mar 1 00:05:57.543: cc_api_icpif: expect factor = 0
*Mar 1 00:05:57.543: g113_calculate_impairment (delay=101,loss=0), Io=0 Iq=0 Idte=0 Idd=0
  Ie=9 Itot=9
*Mar 1 00:05:57.543: cc_api_call_disconnect_done(vdbPtr=0x620BCAF0, callID=0x6, disp=0,
  tag=0x0)
*Mar 1 00:05:57.547: sess_appl: ev(12=CC_EV_CALL_DISCONNECT_DONE), cid(6), disp(0)
*Mar 1 00:05:57.547: cid(6)st(SSA_CS_DISCONNECTING)ev(SSA_EV_CALL_DISCONNECT_DONE)
  oldst(SSA_CS_CONFERENCED_ALERT)cfid(-1)csz(1)in(0)fDest(0)
*Mar 1 00:05:57.547: ssaDisconnectDone
SanJose3640A#
```

SanJose3640A#

[相關資訊](#)

- [使用服務品質 \(LLQ/IP RTP優先順序、LFI、cRTP \) 的PPP上的VoIP連結](#)
- [使用訊框中繼的VoIP與服務品質 \(分段、流量調節、LLQ/IP RTP優先順序 \)](#)
- [適用於訊框中繼到ATM的VoIP QoS與LLQ、PPP LFI和cRTP互通](#)
- [瞭解Cisco IOS平台上的撥號對等體和呼叫段](#)
- [疑難排解與偵錯 VoIP 通話基本功能](#)
- [語音技術支援](#)
- [語音和IP通訊產品支援](#)
- [Cisco IP電話故障排除](#)
- [技術支援與檔案](#)