

小型企業VOIP路由器：訪問某些網站時出現問題

目錄

[簡介](#)

[如何使用Linksys VOIP路由 器訪問某些網站？](#)

[相關資訊](#)

簡介

本文是系列文章中的一篇，旨在協助安裝、疑難排解和維護Cisco Small Business產品。

[問：如何使用Cisco Small Business VoIP路由器訪問某些網站？](#) A.

無法訪問某些網站是由三個主要因素造成的：

Web瀏覽器的安全性設定得太高

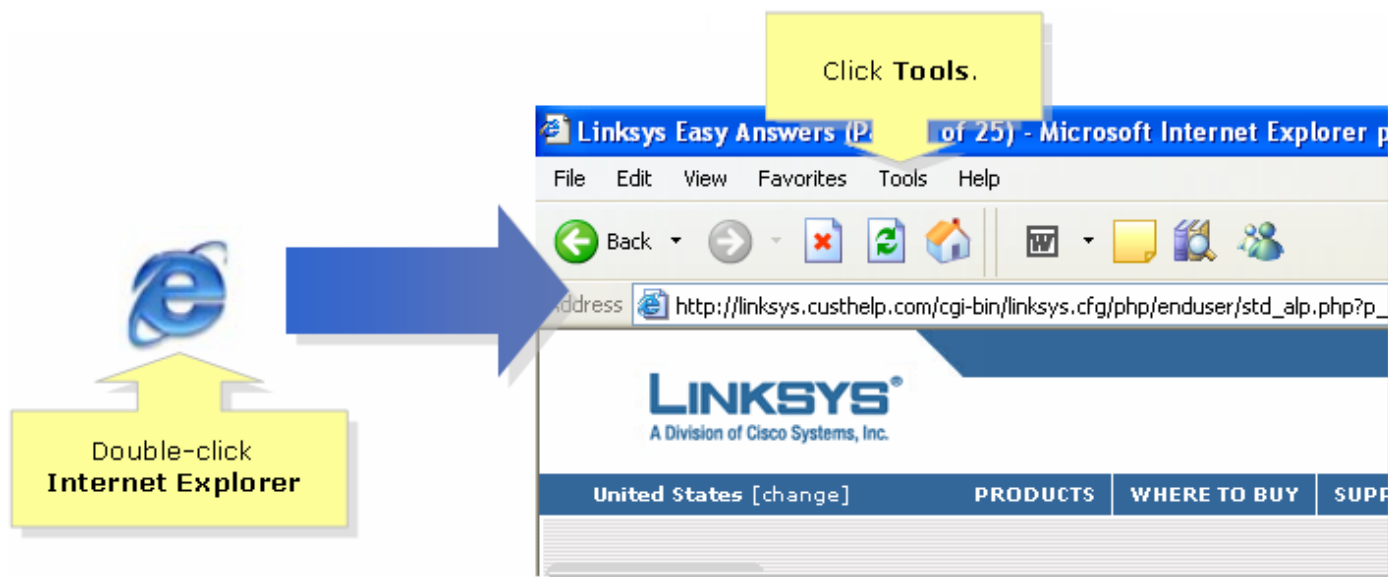
路由器上未正確設定MTU

安全的網站

降低Internet Explorer的安全設定

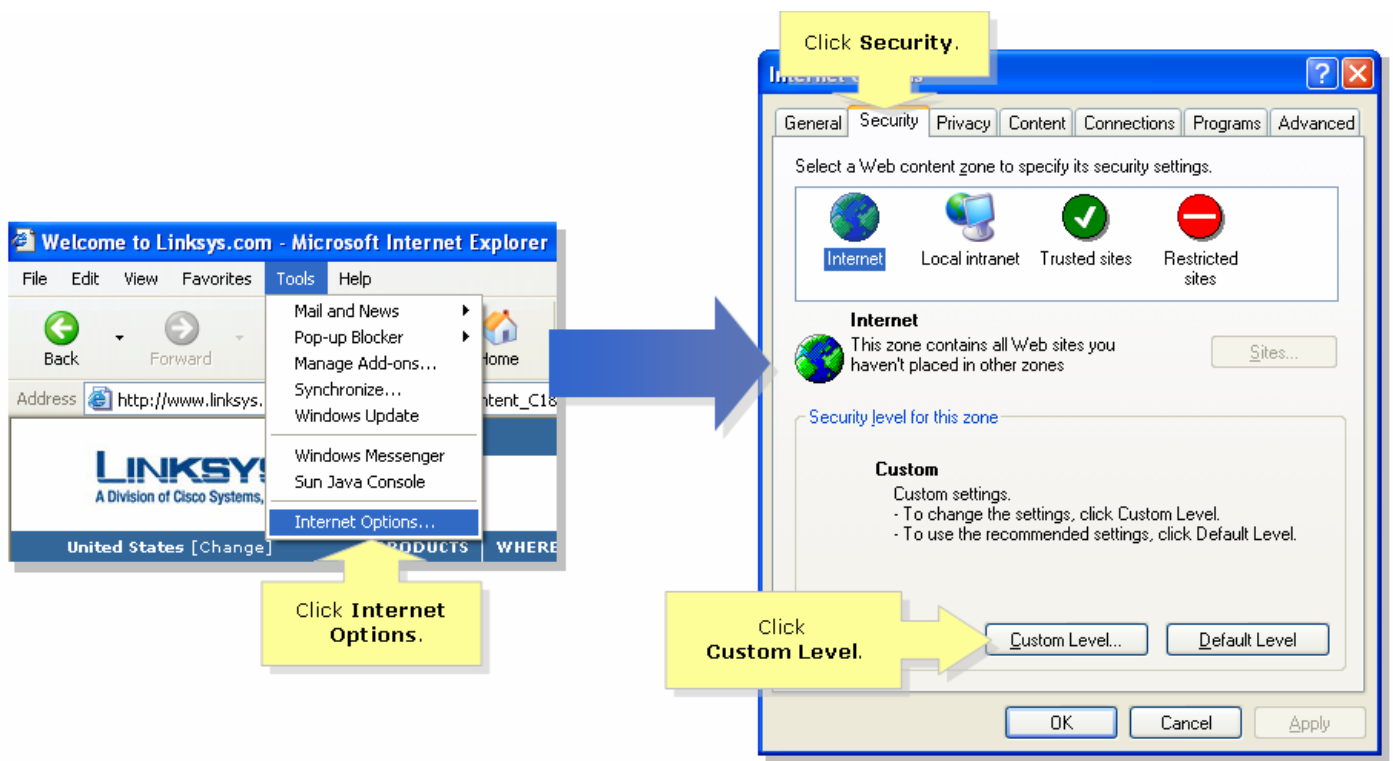
第1步：

按兩下Internet Explorer，然後按一下Tools。



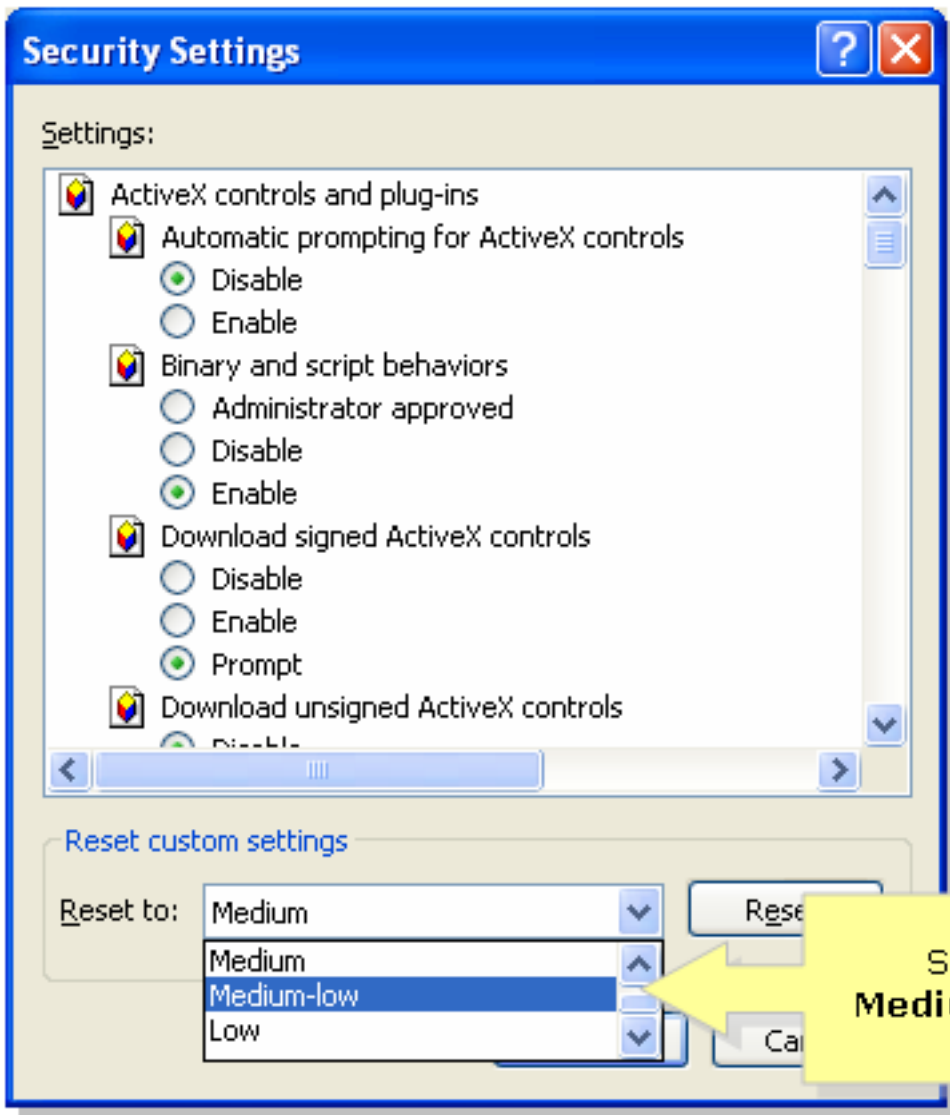
第2步：

選擇Internet Options，然後按一下Security > Custom Level。將出現一個類似於步驟3的視窗。



步驟3:

在「Reset to」下拉選單下，選擇「Medium-Low」，然後按一下「OK」。



附註：如果此操作不起作用，請在ADSL網關上啟用MTU。有關說明，請完成下一節中的步驟。在VoIP路由器上啟用MTU第1步：

確定網站的正確MTU大小。第2步：

訪問路由器的基於Web的設定頁。有關說明，請按一下[此處](#)。步驟3:

當路由器的基於Web的設定頁面出現時，請查詢MTU並將其設定為Manual。在「Size」欄位中，輸入從步驟1取得的MTU值。

LINKSYS
A Division of Cisco Systems, Inc.

Setup

Setup | **Wireless** | Security | Access Restrictions | Applications & Gaming | Administration | Status | Voice

Basic Setup | DDNS | MAC Address Clone | Advanced Routing

Internet Setup

Internet Connection Type: Obtain an IP automatically

Optional Settings (required by some ISPs)

Host Name:

Domain Name:

MTU: Auto Manual Size:

Basic Setup

The Basic Setup screen is where basic configuration is performed. Some ISPs (Internet Service Providers) will require that you enter DNS settings. These settings are inherited from your previous configuration. You have

Enter the proper MTU size.

Select Manual.

Save Settings

附註：以下是DSL和電纜連線的建議MTU大小：**電纜連線**:1500

PPPoE DSL連線:1492第4步：按一下 **Save Settings**。附註：如果不起作用，請完成下一節

中的步驟，在路由器上開啟埠。為安全站點開啟埠第1步：

訪問路由器的基於Web的設定頁。有關說明，請按一下[此處](#)。第2步：

當路由器的基於Web的設定頁面出現時，按一下Applications & Gaming > Port Triging。

LINKSYS
A Division of Cisco Systems, Inc.

Applications & Gaming

Setup | Wireless | Security | Access Restrictions | **Applications & Gaming** | Administration | Status

Port Range Forward | Port Triggering | DMZ | QoS

Click Applications & Gaming.

Click Port Triggering.

步驟3:

在Application下鍵入「https」，然後在Triggered Range和Forwarded Range欄位中鍵入「443」（https使用的埠）。

Applications & Gaming

Setup Wireless Security Access Restrictions Applications & Gaming Administration Status Voice
Port Range Forwarding | Port Triggering | DMZ | QoS

Port Triggering

Port Triggering

Port triggering will forward port based on the incoming port specified. Check with your software application to find out what is necessary to enter in these fields.

To add a server using forwarding:

1. Enter an Application name of the service you want to forward.
2. Enter the Trigger Range for Start and End of the services to trigger forwarding.
3. Enter the Forwarded Range for Start and End of the service you want to forward.

[More...](#)



Save Settings Cancel Changes

Under **Application**, enter "https" then under **Triggered** and **Forwarded Range**, enter "443" on both fields.

Application	Triggered Range		Forwarded Range	
	Start Port	End Port	Start port	End Port
https	443	to 443	443	to 443
		to		to
		to		to
		to		to
		to		to
		to		to
		to		to
		to		to
		to		to
		to		to
		to		to

第4步：按一下 **Save Settings**。

相關資訊

- [技術支援與文件 - Cisco Systems](#)