

# WAP571上的安裝嚮導

## 目標

「安裝嚮導」是一組互動式說明，指導您完成WAP571的初始配置。這些說明涵蓋運行WAP571所需的基本配置。「*Access Point Setup Wizard*」視窗將在您首次登入WAP時自動顯示，但也可隨時使用Web GUI訪問。

本文檔的目的是說明如何通過使用安裝嚮導配置WAP571。

## 適用裝置

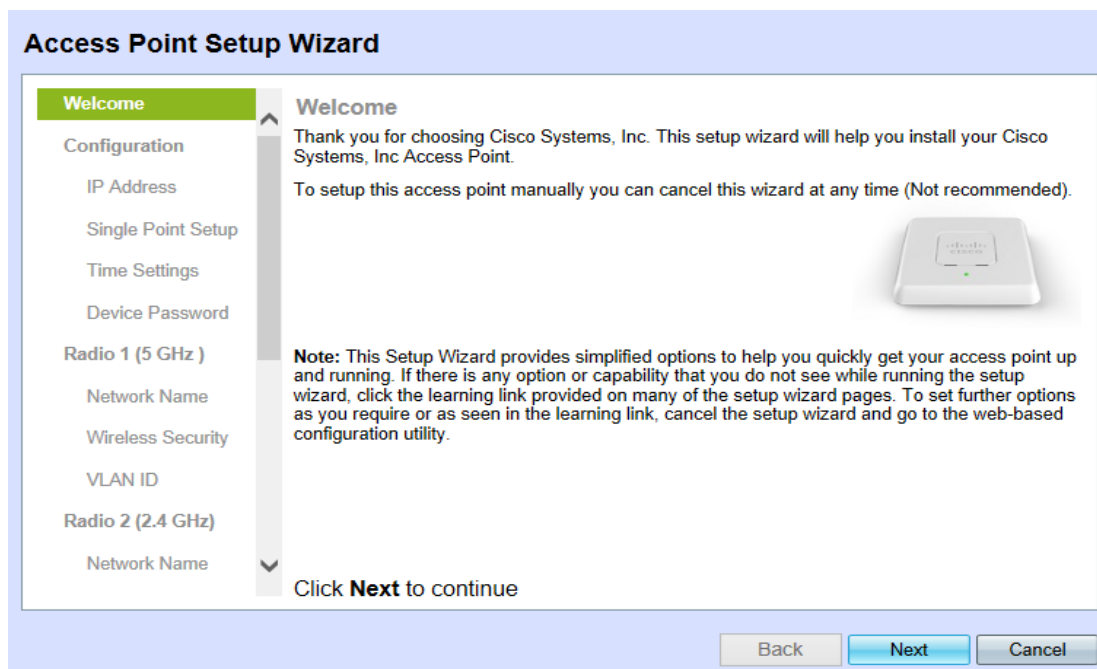
- WAP571

## 軟體版本

- V1.0.0.1

## 配置安裝嚮導

步驟1.登入到Web配置實用程式並選擇**運行安裝嚮導**。出現「*Access Point Setup Wizard*」視窗。



附註：如果這是首次登入裝置，此視窗將自動顯示。

步驟2.按一下下一步繼續。*Configure Device - IP Address*頁面開啟：

### Access Point Setup Wizard

**Welcome**

**Configuration**

**IP Address**

Single Point Setup

Time Settings

Device Password

**Radio 1 (5 GHz)**

Network Name

Wireless Security

VLAN ID

**Radio 2 (2.4 GHz)**

Network Name

#### Configure Device - IP Address

Select either Dynamic or Static IP address for your device.

Dynamic IP Address (DHCP) (Recommended)

Static IP Address

Static IP Address:  .  .  .

Subnet Mask:  .  .  .

Default Gateway:  .  .  .

DNS:  .  .  .

Secondary DNS (optional):  .  .  .

[Learn more about the different connection types](#)

Click **Next** to continue

步驟3. 點選要用於確定裝置IP地址的方法對應的單選按鈕。

· 動態IP地址(DHCP)- WAP的IP地址由DHCP伺服器分配。這是推薦設定。如果選中，請跳至 [步驟9](#)。

Dynamic IP Address (DHCP) (Recommended)

· 靜態IP地址 — 為WAP建立固定 ( 靜態 ) IP地址。除非重新配置，否則不會更改此地址。

#### Configure Device - IP Address

Select either Dynamic or Static IP address for your device.

Dynamic IP Address (DHCP) (Recommended)

Static IP Address

Static IP Address:  .  .  .

Subnet Mask:  .  .  .

Default Gateway:  .  .  .

DNS:  .  .  .

Secondary DNS (optional):  .  .  .

步驟4. 在 靜態IP地址欄位中，輸入WAP的IP地址。

**附註：**此IP地址由您建立，不應由網路中的任何其他裝置使用。

步驟5. 在 *Subnet Mask* 欄位中，輸入IP位址的所需子網掩碼。

步驟6. 在 *Default Gateway* 欄位中，輸入WAP所需的預設閘道的IP位址。

**附註：**預設網關通常是分配給路由器的專用IP地址。

步驟7. 在 *DNS* 欄位中，輸入所需主要網域名稱系統(DNS)伺服器的IP位址。

**附註：** 如果要訪問外部網頁，應使用您的Internet服務提供商(ISP)提供的DNS伺服器。

步驟8。(可選)在**輔助DNS**欄位中，輸入所需輔助DNS的IP地址。

步驟9.按一下**下一步**繼續。此時將開啟「**單點設定 — 設定群集**」頁：

**Access Point Setup Wizard**

**Welcome**

**Configuration**

- ✓ IP Address
- Single Point Setup**
- Time Settings
- Device Password

**Radio 1 (5 GHz)**

- Network Name
- Wireless Security
- VLAN ID

**Radio 2 (2.4 GHz)**

- Network Name

**Single Point Setup -- Set A Cluster**

A cluster provides a single point of administration and lets you view, deploy, configure, and secure the wireless network as a single entity, rather than separate wireless devices.

Create a New Cluster  
Recommended for a new deployment environment.

New Cluster Name:

AP Location:

Cluster Mgmt Address (optional):

Join an Existing Cluster  
Recommended for adding new wireless access points to the existing deployment environment.

Existing Cluster Name:

AP Location:

Do not Enable Single Point Setup  
Recommended for single device deployments or for configuring each device individually.

[Learn more about single point setup](#)

Click **Next** to continue

Back Next Cancel

步驟10.按一下所需集群設定的相應單選按鈕。集群允許您同時配置多個接入點(AP)。如果您決定不使用集群，則需要單獨配置它們。

·**建立新群集 — 為AP建立新群集。**

**Create a New Cluster**  
Recommended for a new deployment environment.

New Cluster Name:

AP Location:

Cluster Mgmt Address (optional):

·**加入現有群集 — 加入網路中的現有AP群集。**

**Join an Existing Cluster**  
Recommended for adding new wireless access points to the existing deployment environment.

Existing Cluster Name:

AP Location:

·**不啟用單點設定 — 不允許單點設定 ( 群集 )。** 如果選中此項，請跳至**步驟14**。

**Do not Enable Single Point Setup**  
Recommended for single device deployments or for configuring each device individually.

**附註：** 如果選擇了**加入現有群集**，則WAP將基於群集配置其餘設定。按一下**下一步**，系統會詢問您是否要加入群集。按一下**Submit**以加入群集。配置完成後，按一下**Finish**退出安裝嚮導。

步驟11.在New或Existing Cluster Name欄位中，輸入所需的群集名稱。

步驟12.在AP Location欄位中，輸入WAP的物理位置。此欄位不會影響AP的操作。

步驟13。(可選)如果建立新集群，請在集群管理地址(Cluster Mgmt Address)欄位中輸入所需的管理地址。

步驟14.按一下下一步繼續。Configure Device - Set System Date and Time頁面開啟：

Access Point Setup Wizard

Welcome

Configuration

- ✓ IP Address
- ✓ Single Point Setup
- Time Settings**
- Device Password
- Radio 1 (5 GHz)
- Network Name
- Wireless Security
- VLAN ID
- Radio 2 (2.4 GHz)
- Network Name

**Configure Device - Set System Date And Time**  
Enter the time zone, date and time.

Time Zone: (GMT -08:00) Canada (Pacific and Yukon)

Set System Time:  Network Time Protocol (NTP)  
 Manually

NTP Server: 0.ciscosb.pool.ntp.org

[Learn more about time settings](#)

Click **Next** to continue

Back Next Cancel

步驟15.從Time Zone下拉選單中選擇適當的時區。

步驟16.按一下所需方法的相應單選按鈕以設定WAP上的時間。

·網路時間協定(NTP)- WAP從NTP伺服器獲取時間。

Time Zone: (GMT -08:00) Canada (Pacific and Yukon)

·手動 — 時間是手動輸入到WAP中的。如果選中，請跳至[步驟18](#)。

Set System Time:  Network Time Protocol (NTP)  
 Manually

System Date: February 3 2016

System Time: 14 : 50  Gets date and time from current computer

步驟17.如果已選擇網路時間協定，請在NTP伺服器欄位中輸入將提供日期和時間的NTP伺服器的URL。請跳至[步驟20](#)。

步驟18.在System Date (系統日期) 下拉選單中分別選擇年、月、日。

步驟19.在System Time下拉選單中分別選擇小時和分鐘。

步驟20.按一下下一步繼續。*Configure Device - Set Password* 頁面隨即開啟：

**Access Point Setup Wizard**

**Welcome**

**Configuration**

- ✓ IP Address
- ✓ Single Point Setup
- ✓ Time Settings
- Device Password**

**Radio 1 (5 GHz)**

- Network Name
- Wireless Security
- VLAN ID

**Radio 2 (2.4 GHz)**

- Network Name

**Configure Device - Set Password**

The administrative password protects your access point from unauthorized access. For security reasons, you should change the access point password from its default settings. Please write this password down for future reference.

Enter a new device password:

New password needs at least 8 characters composed of lower and upper case letters as well as numbers/symbols by default.

New Password:

Confirm Password:

Password Strength Meter:  Strong

Password Complexity:  Enable

[? Learn more about passwords](#)

Click **Next** to continue

Back Next Cancel

步驟21.在 *New Password* 欄位中，輸入新密碼。此密碼將授予您對WAP的管理訪問許可權。

步驟22.在 *Confirm Password* 欄位中，重新輸入相同的密碼。

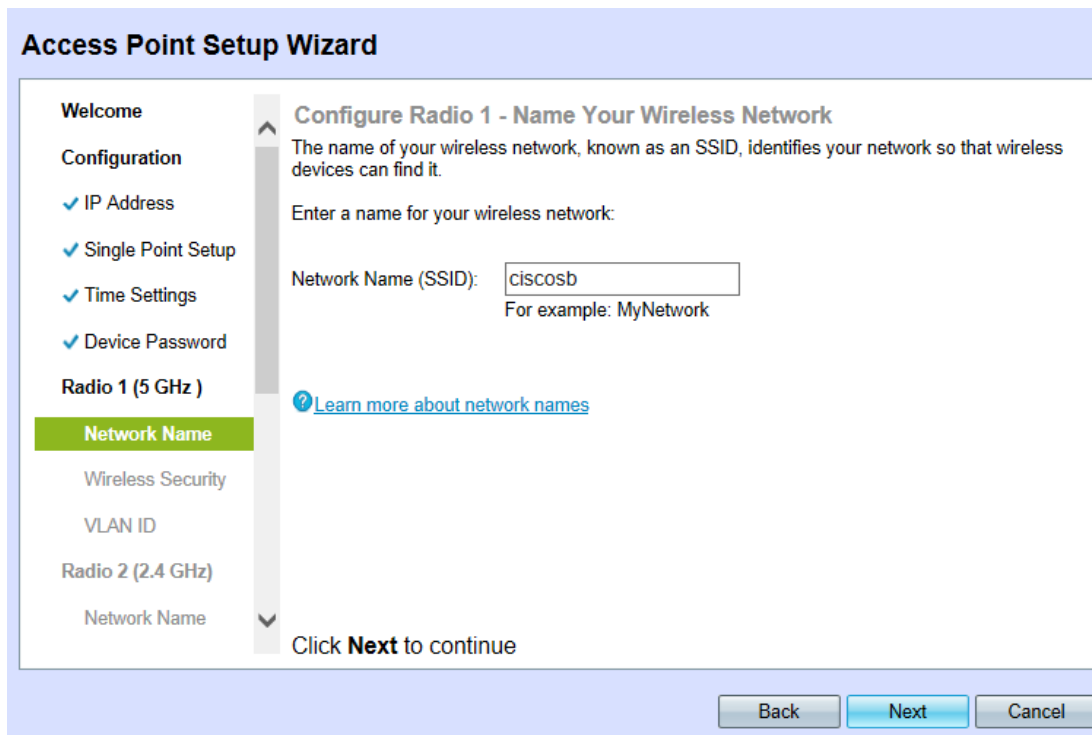
**附註：**輸入密碼後，豎條的數量和顏色會隨之改變，以指示密碼強度，如下所示：

- 紅色 — 密碼不符合最低複雜性要求。
- 橙色 — 密碼滿足最低複雜性要求，但密碼強度較弱。
- 綠色 — 密碼是強密碼，超過最低複雜性要求。

步驟23. ( 可選 ) 要啟用/禁用密碼複雜性，請選中 **Enable** 覈取方塊。

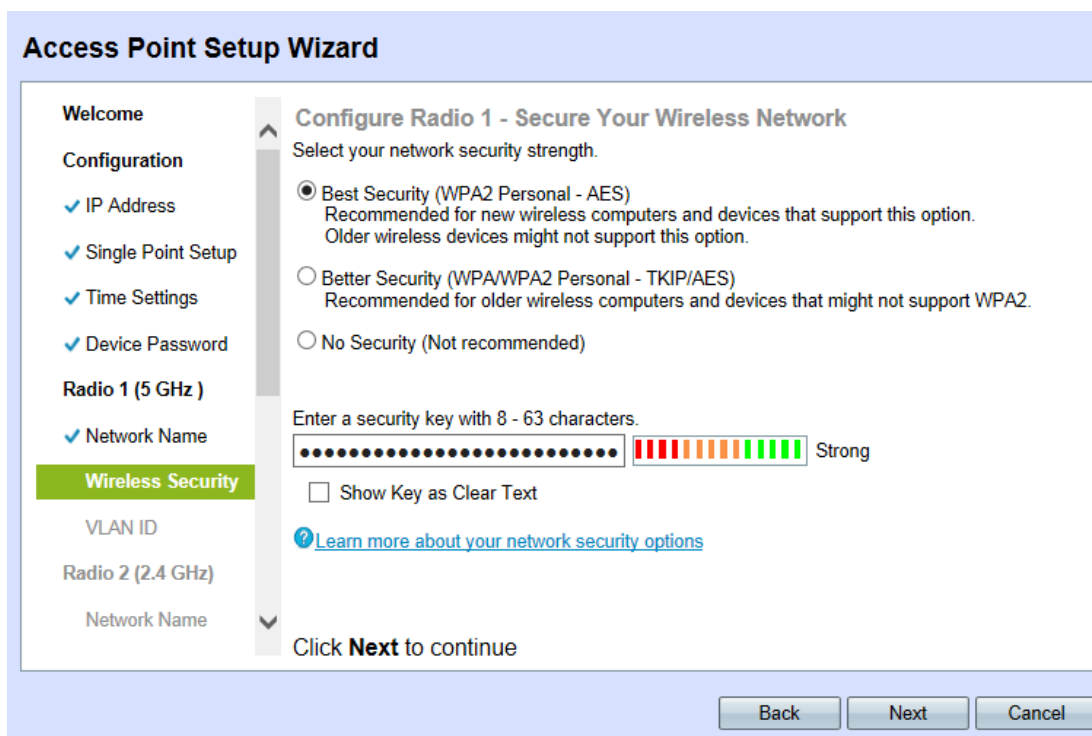
**附註：**密碼複雜性要求密碼至少為8個字元，並且由大寫字母和數字或符號組成。

步驟24.按一下下一頁繼續。其 *配置無線電1/2 — 為您的無線網路命名* 頁面開啟：



步驟25.在Network Name(SSID)欄位中，輸入無線網路的服務集標識(SSID)。SSID是無線區域網的名稱。

步驟26.按一下下一步，此時將開啟Configure Radio 1|2 - Secure Your Wireless Network頁面：



步驟27.按一下所需網路安全方法的相應單選按鈕。方法如下：

- 最佳安全 ( WPA2個人 — AES ) — WPA2是適用於Wi-Fi無線網路的WPA安全和訪問控制技術的第二個版本，其中包括AES-CCMP加密。此協定版本根據IEEE 802.11i標準提供最佳安全性。網路上的所有客戶端站都需要支援WPA2。WPA2不允許使用協定TKIP ( 臨時金鑰完整性協定 ) ，因為它具有已知限制。

- 更好的安全性 ( WPA個人 — TKIP/AES ) — WPA個人是Wi-Fi聯盟IEEE 802.11i標準，包

括AES-CCMP和TKIP加密。當存在支援原始WPA但不支援較新WPA2的較舊無線裝置時，它可提供安全性。

·無安全性 — 無線網路不需要密碼，任何人都可以訪問。如果選擇無安全性，請跳至[步驟30](#)。

步驟28.在 *Security Key* 欄位中，輸入網路所需的密碼。

步驟29。（可選）要在鍵入時檢視密碼，請選中 **Show Key as Clear Text** 覈取方塊。

步驟30.按一下下一步繼續。 *Configure Radio 1/2* — 為 *Wireless Network* 分配VLAN ID頁面開啟：

**Access Point Setup Wizard**

Welcome

Configuration

- ✓ IP Address
- ✓ Single Point Setup
- ✓ Time Settings
- ✓ Device Password

Radio 1 (5 GHz)

- ✓ Network Name
- ✓ Wireless Security
- VLAN ID**

Radio 2 (2.4 GHz)

Network Name

**Configure Radio 1 - Assign The VLAN ID For Your Wireless Network**

By default, the VLAN ID assigned to the management interface for your access point is 1, which is also the default untagged VLAN ID. If the management VLAN ID is the same as the VLAN ID assigned to your wireless network, then the wireless clients associated with this specific wireless network can administer this device. If needed, an access control list (ACL) can be created to disable administration from wireless clients.

Enter a VLAN ID for your wireless network:

VLAN ID:  (Range: 1 - 4094)

[Learn more about vlan ids](#)

Click **Next** to continue

Back Next Cancel

附註：如果選擇 *No Security*，裝置將提示您確認您的決定。

步驟31.在 *VLAN ID* 欄位中，輸入WAP所屬的所需VLAN的ID編號。

附註：VLAN ID應與連線到WAP的遠端裝置的埠上支援的其中一個VLAN ID匹配。

附註：重複步驟24 - 31以配置Radio 2;兩個無線電的配置過程相同。

步驟32.按一下下一步繼續。將開啟「啟用強制網路門戶 — 建立訪客網路」頁面：

**Access Point Setup Wizard**

**Radio 2 (2.4 GHz)**

- ✓ Network Name
- ✓ Wireless Security
- ✓ VLAN ID

**Captive Portal**

- Creation**
- Network Name
- Wireless Security
- VLAN ID
- Redirect URL
- Summary
- Finish

**Enable Captive Portal - Create Your Guest Network**

Use Captive Portal to set up a guest network, which means that wireless users need to be authenticated before they can access the Internet. For example, a hotel can create a guest network to redirect new wireless users to a page for authentication.

Do you want to create your guest network now?

Yes

No, thanks.

[? Learn more about captive portal guest networks](#)

Click **Next** to continue

Back Next Cancel

步驟33.要建立訪客網路，請按一下**Yes**。訪客網路要求使用者在允許訪問網際網路之前經過身份驗證。如果選擇**No**，請跳至[步驟47](#)。

附註：這是與步驟24 - [31](#)期間配置的網絡獨立的網絡。

步驟34.按一下**Next**繼續。*Enable Captive Portal - Name Your Guest Network*頁面開啟：

**Access Point Setup Wizard**

**Radio 2 (2.4 GHz)**

- ✓ Network Name
- ✓ Wireless Security
- ✓ VLAN ID

**Captive Portal**

- ✓ Creation
- Network Name**
- Wireless Security
- VLAN ID
- Redirect URL
- Summary
- Finish

**Enable Captive Portal - Name Your Guest Network**

Your guest network needs a new name, known as an SSID. The name identifies your guest network so that wireless users can find it.

Enter a name for your guest network:

Radio:  Radio 1 (5 GHz)  Radio 2 (2.4 GHz)

Guest Network name:

For example: MyGuestNetwork

[? Learn more about network names](#)

Click **Next** to continue

Back Next Cancel

步驟35.在**Radio**欄位中按一下所需無線電波的相應單選按鈕。

·無線電1(5 GHz)

·無線電2(2.4 GHz)

步驟36.在**Guest Network name**欄位中，輸入訪客網路的SSID。



步驟37.按一下下一步繼續。 *Enable Captive Portal - Secure Your Guest Network* 頁面開啟：

**Access Point Setup Wizard**

**Radio 2 (2.4 GHz)**

- ✓ Network Name
- ✓ Wireless Security
- ✓ VLAN ID

**Captive Portal**

- ✓ Creation
- ✓ Network Name

**Wireless Security**

- VLAN ID
- Redirect URL

**Summary**

**Finish**

**Enable Captive Portal - Secure Your Guest Network**

Select your guest network security strength.

- Best Security (WPA2 Personal - AES)**  
Recommended for new wireless computers and devices that support this option.  
Older wireless devices might not support this option.
- Better Security (WPA/WPA2 Personal - TKIP/AES)**  
Recommended for older wireless computers and devices that might not support WPA2.
- No Security (Not recommended)**

Enter a security key with 8 - 63 characters.

..... Strong

Show Key as Clear Text

[Learn more about your network security options](#)

Click **Next** to continue

Back Next Cancel

步驟38.按一下所需網路安全方法的相應單選按鈕。方法如下：

·最佳安全 ( WPA2個人 — AES ) — WPA2是適用於Wi-Fi無線網路的WPA安全和訪問控制技術的第二個版本，其中包括AES-CCMP加密。此協定版本根據IEEE 802.11i標準提供最佳安全性。網路中的所有客戶端站都需要支援WPA2。WPA2不允許使用具有已知限制的協定TKIP ( 臨時金鑰完整性協定 )。

·更好的安全性 ( WPA個人 — TKIP/AES ) — WPA個人是Wi-Fi聯盟IEEE 802.11i標準，包括AES-CCMP和TKIP加密。當存在支援原始WPA但不支援較新WPA2的較舊無線裝置時，它可提供安全性。

·無安全性 — 無線網路不需要密碼，任何人都可以訪問。如果選擇無安全性，請跳至[步驟42](#)。

步驟39.在 *Security Key* 欄位中，輸入網路所需的密碼。

步驟40。( 可選 ) 要在鍵入時檢視密碼，請選中 **Show Key as Clear Text** 覈取方塊。

步驟41.按一下下一步繼續。 *Enable Captive Portal - Assign the VLAN ID For Your Wireless Network* 頁面開啟：

### Access Point Setup Wizard

**Radio 2 (2.4 GHz)**

- ✓ Network Name
- ✓ Wireless Security
- ✓ VLAN ID

**Captive Portal**

- ✓ Creation
- ✓ Network Name
- ✓ Wireless Security
- VLAN ID**
- Redirect URL
- Summary
- Finish

#### Enable Captive Portal - Assign The VLAN ID

We strongly recommend that you assign different VLAN ID for your guest network than the management VLAN ID. By doing that, your guest will have no access to your private network.

Enter a VLAN ID for your guest network:

VLAN ID:  (Range: 1 - 4094)

[Learn more about vlan ids](#)

Click **Next** to continue

Back Next Cancel

附註：如果選擇 *No Security*，裝置將提示您確認您的決定。

步驟42.在 *VLAN ID* 欄位中，輸入WAP所屬的所需VLAN的ID編號。

附註：VLAN ID應與連線到WAP的遠端裝置的埠上支援的其中一個VLAN ID匹配。

步驟43.按一下下一步繼續。 *Enable Captive Portal - Enable Redirect URL* 頁面隨即開啟：

### Access Point Setup Wizard

**Radio 2 (2.4 GHz)**

- ✓ Network Name
- ✓ Wireless Security
- ✓ VLAN ID

**Captive Portal**

- ✓ Creation
- ✓ Network Name
- ✓ Wireless Security
- ✓ VLAN ID
- Redirect URL**
- Summary
- Finish

#### Enable Captive Portal - Enable Redirect URL

If you enable a redirect URL, when new wireless users have completed the authentication process, they can be redirected to an alternate startup page.

Enable Redirect URL

Redirect URL :

[Learn more about redirect urls](#)

Click **Next** to continue

Back Next Cancel

步驟44. (可選) 要在無線使用者登入到訪客網路後重定向到網頁，請選中 **Enable Redirect URL** 覈取方塊。如果未啟用，請跳至 [步驟46](#)。

步驟45.在 *Redirect URL* 欄位中，輸入使用者長期登入訪客網路後想要重新導向的網頁。

步驟46.按一下下一步繼續。 *Summary - Confirm Your Settings* 頁面開啟：

### Access Point Setup Wizard

**Radio 2 (2.4 GHz)**

- ✓ Network Name
- ✓ Wireless Security
- ✓ VLAN ID

**Captive Portal**

- ✓ Creation
- ✓ Network Name
- ✓ Wireless Security
- ✓ VLAN ID
- ✓ Redirect URL

Summary

Finish

#### Summary - Confirm Your Settings

Please review the following settings and ensure the data is correct.

Radio 1 (5 GHz)	
Network Name (SSID):	ciscosb
Network Security Type:	WPA2 Personal - AES
Security Key:	*****
VLAN ID:	1
Radio 2 (2.4 GHz)	
Network Name (SSID):	ciscosb
Network Security Type:	WPA2 Personal - AES
Security Key:	*****
VLAN ID:	1

**Captive Portal (Guest Network) Summary**

Guest Network Radio:	Radio 1
Network Name (SSID):	ciscosb-guest
Network Security Type:	WPA2 Personal - AES

Click **Submit** to enable settings on your Cisco Systems, Inc Access Point

Back
Submit

步驟47。(可選)若要編輯您所做的設定，請按一下**Back**，直到您到達所需的頁面。

步驟48。(可選)如果要退出安裝嚮導並撤消所做的所有更改，請按一下**取消**。

步驟49.檢查網路和訪客網路設定。按一下**Submit**以啟用WAP上的設定。

### Access Point Setup Wizard

**Radio 2 (2.4 GHz)**

- ✓ Network Name
- ✓ Wireless Security
- ✓ VLAN ID

**Captive Portal**

- ✓ Creation
- ✓ Network Name
- ✓ Wireless Security
- ✓ VLAN ID
- ✓ Redirect URL

Summary

Finish

#### Device Setup Complete

✓ Congratulations, your access point has been set up successfully. We strongly recommend that you save these settings by writing them down or by copying and pasting them into a text document. You will need these settings later when you add other wireless computers or devices to your network.

Cluster Name: ciscosb-cluster	
Radio 1 (5 GHz)	
Network Name (SSID):	ciscosb
Network Security Type:	WPA2 Personal - AES
Security Key:	*****
Radio 2 (2.4 GHz)	
Network Name (SSID):	ciscosb
Network Security Type:	WPA2 Personal - AES
Security Key:	*****

Click **Finish** to close this wizard.

Back
Finish

步驟50.按一下**完成**退出安裝嚮導。

## 結論

現在，您的WAP裝置應已配置其基本設定。除了現在配置的裝置密碼外，裝置的2.4 GHz和5 GHz無線電現在都配置有各自的SSID和密碼配置。訪客網路的存在和設定現在也已完成，且可能出現的URL重新導向。可在任何時刻通過遵循相應頁面重新配置這些設定。也可以隨時再

次訪問安裝嚮導。