

在WAP561上配置安裝嚮導

目標

「安裝嚮導」是一組互動式說明，指導您完成WAP561的初始配置。這些說明涵蓋運行WAP561所需的基本配置。「*Access Point Setup Wizard*」視窗在您首次登入WAP時自動顯示，但也可隨時使用。本文說明如何使用安裝嚮導配置WAP561。

適用的裝置

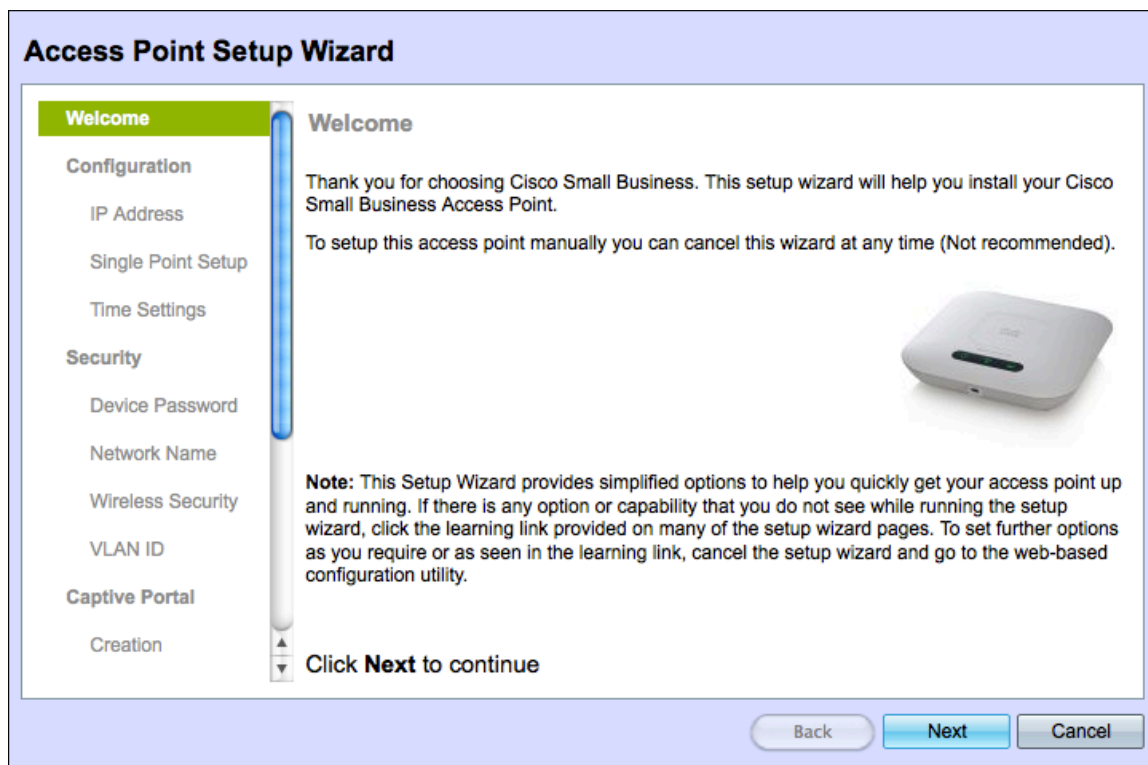
·WAP561

軟體版本

·v1.0.4.2

配置安裝嚮導

步驟1.登入到Web配置實用程式並選擇**運行安裝嚮導**。出現「*Access Point Setup Wizard*」視窗。



步驟2.按一下**下一步**繼續。*Configure Device - IP Address*頁面開啟：

Configure Device - IP Address

Select either Dynamic or Static IP address for your device.

Dynamic IP Address (DHCP) (Recommended)

Static IP Address

Static IP Address: . . .

Subnet Mask: . . .

Default Gateway: . . .

DNS: . . .

Secondary DNS (optional): . . .

[? Learn more about the different connection types](#)

Click **Next** to continue

步驟3. 點選與要用於確定WAP IP地址的方法對應的單選按鈕。

- 動態IP地址(DHCP) (推薦) — WAP的IP地址由DCHP伺服器分配。如果選擇動態IP地址，請跳到步驟9。
- 靜態IP地址 — 允許您為WAP建立固定 (靜態) IP地址。靜態IP地址不變。

步驟4. 在 *靜態IP地址* 欄位中，輸入WAP的IP地址。此IP地址由您建立，不應由網路中的其他裝置使用。

步驟5. 在 *Subnet Mask* 欄位中，輸入IP位址的子網掩碼。

步驟6. 在 *Default Gateway* 欄位中，輸入WAP的預設閘道的IP位址。預設網關通常是分配給路由器的專用IP地址。

步驟7. (可選) 在 *DNS* 欄位中，輸入主要網域名稱系統(DNS)的IP位址。如果您想訪問網路之外的網頁，DNS伺服器的IP地址應由您的Internet服務提供商(ISP)提供。

步驟8. (可選) 在 *輔助DNS* 欄位中，輸入輔助DNS的IP地址。

步驟9. 按一下下一步繼續。此時將開啟「單點設定 — 設定集群」頁：

Single Point Setup – Set A Cluster

A cluster provides a single point of administration and lets you view, deploy, configure, and secure the wireless network as a single entity, rather than as a series of separate wireless devices.

Create a New Cluster

Recommended for a new deployment environment.

New Cluster Name:

AP Location:

Join an Existing Cluster

Recommended for adding new wireless access points to the existing deployment environment.

Existing Cluster Name:

AP Location:

Do not Enable Single Point Setup

Recommended for single device deployments or if you prefer to configure each device individually.

Click **Next** to continue

步驟10.點選與您要使用的群集設定對應的單選按鈕。集群可將多個接入點(AP)配置為單個裝置。如果選擇不使用集群，則必須單獨配置它們。

- 建立新群集 — 為AP建立新群集。
- 加入現有群集 — 加入網路中的現有AP群集。
- 不啟用單點設定 — 不允許單點設定（群集）。如果選擇此選項，請跳至步驟13。

步驟11.在**群集名稱**欄位中，輸入現有集群名稱，或根據您在步驟10中的決定建立新集群名稱。

步驟12.在**AP Location**欄位中，輸入WAP的物理位置。

注意：如果按一下了**Join an Existing Cluster**單選按鈕，則WAP會根據群集配置其餘設定。按一下「下一步」時，確認頁會詢問您是否確定要加入群集。按一下**提交**以加入群集。配置完成後，按一下**完成**退出安裝嚮導。

步驟13.按一下**下一步**繼續。*Configure Device - Set System Date and Time*頁面開啟：

Configure Device - Set System Date And Time

Enter the time zone, date and time.

Time Zone:

Set System Time: Network Time Protocol (NTP)
 Manually

NTP Server:

[? Learn more about time settings](#)

Click **Next** to continue

步驟14.從Time Zone下拉選單中選擇時區。

步驟15.點選與您要用於設定WAP時間的方法對應的單選按鈕。

·網路時間協定(NTP)- WAP從NTP伺服器獲取時間。

·手動 — 時間是手動輸入到WAP中的。如果手動選擇，請跳至步驟17。

步驟16.在「NTP服務器」欄位中，輸入提供日期和時間的NTP伺服器的域名。跳至步驟19。

Configure Device - Set System Date And Time

Enter the time zone, date and time.

Time Zone:

Set System Time: Network Time Protocol (NTP)
 Manually

System Date:

System Time: :

[? Learn more about time settings](#)

Click **Next** to continue

步驟17.從系統日期下拉選單中，分別選擇月、日和年。

步驟18.從System Time下拉選單中，分別選擇小時和分鐘。

步驟19.按一下下一步繼續。 *Enable Security - Set Password* 頁面隨即開啟：

Enable Security - Set Password


The administrative password protects your access point from unauthorized access. For security reasons, you should change the access point password from its default settings. Please write this password down for future reference.

Enter a new device password:

New password needs at least 8 characters composed of lower and upper case letters as well as numbers/symbols by default.

New Password:

Confirm Password:

Password Strength Meter:  Strong

Password Complexity: Enable

[? Learn more about passwords](#)

Click **Next** to continue

步驟20.在 *New Password* 欄位中，輸入在WAP上進行管理存取時所需的新密碼。

步驟21.在 *Confirm Password* 欄位中，重新輸入相同的密碼。

附註：輸入密碼後，豎條的數量和顏色會隨之變化，以指示密碼強度，如下所示：

- 紅色 — 密碼不符合最低複雜性要求。
- 橙色 — 密碼滿足最低複雜性要求，但密碼強度較弱。
- 綠色 — 密碼強。

步驟22. (可選) 要啟用密碼複雜性，請選中 **Enable** 覈取方塊。這要求密碼長度至少為8個字元，並且由大寫字母和數字/符號組成。

步驟23.按一下下一步繼續。 *Configure Radio 1 - Name Your Wireless Network* 頁面開啟。WAP561包含兩個無線電。每個無線電都作為一個獨立的WAP運行，可以包含16個虛擬接入點。在初始配置中，您只為每個無線電建立一個接入點。

Configure Radio 1 - Name Your Wireless Network

The name of your wireless network, known as an SSID, identifies your network so that wireless devices can find it.

Enter a name for your wireless network:

Network Name (SSID):

For example: MyNetwork

[? Learn more about network names](#)

Click **Next** to continue

步驟24.在Network Name(SSID)欄位中，輸入無線網路的服務集標識(SSID)。SSID是無線區域網的名稱。

步驟25.按一下下一步繼續。Configure Radio 1 - Secure Your Wireless Network 頁面開啟。

Configure Radio 1 - Secure Your Wireless Network

Select your network security strength.

- Best Security (WPA2 Personal - AES)
Recommended for new wireless computers and devices that support this option.
Older wireless devices might not support this option.
- Better Security (WPA Personal - TKIP/AES)
Recommended for older wireless computers and devices that might not support WPA2.
- No Security (Not recommended)

Enter a security key with 8-63 characters.

Strong

Show Key as Clear Text

[? Learn more about your network security options](#)

Click **Next** to continue

步驟26.點選與要應用於無線網路的網路安全對應的單選按鈕。

·最佳安全 (WPA2個人 — AES) — WPA2是適用於Wi-Fi無線網路的WPA安全和訪問控制技術的第二個版本，其中包括AES-CCMP加密。此協定版本根據IEEE 802.11i標準提供最佳安全性。網路中的所有客戶端站都需要支援WPA2。WPA2不允許使用具有已知限制的協定TKIP (臨時金鑰完整性協定) 。

·更好的安全性 (WPA個人 — TKIP/AES) — WPA個人是Wi-Fi聯盟IEEE 802.11i標準，包

括AES-CCMP和TKIP加密。當存在支援原始WPA但不支援較新WPA2的較舊無線裝置時，它可提供安全性。

·無安全性 — 無線網路不需要密碼，任何人都可以訪問。如果選擇無安全性，請跳至步驟29。

步驟27.在 *Security Key* 欄位中，輸入網路的密碼。

步驟28。（可選）要在鍵入時檢視密碼，請選中 **Show Key as Clear Text** 覈取方塊。

步驟29.按一下 **下一步** 繼續。 *Configure Radio 1 - Assign The VLAN ID For Your Wireless Network* 頁面開啟。

Configure Radio 1 - Assign The VLAN ID For Your Wireless Network

By default, the VLAN ID assigned to the management interface for your access point is 1, which is also the default untagged VLAN ID. If the management VLAN ID is the same as the VLAN ID assigned to your wireless network, then the wireless clients associated with this specific wireless network can administer this device. If needed, an access control list (ACL) can be created to disable administration from wireless clients.

Enter a VLAN ID for your wireless network:

VLAN ID: (Range: 1 - 4094)

[? Learn more about vlan ids](#)

Click **Next** to continue

步驟30.在 *VLAN ID* 欄位中，輸入您希望WAP所屬的VLAN的ID編號。

附註： VLAN ID應與連線到WAP的遠端裝置的埠上支援的其中一個VLAN ID匹配。

步驟31.按一下 **下一步** 繼續。 *Configure Radio 2 - Name Your Wireless Network* 頁面開啟：

Configure Radio 2 - Name Your Wireless Network

The name of your wireless network, known as an SSID, identifies your network so that wireless devices can find it.

Enter a name for your wireless network:

Network Name (SSID):

For example: MyNetwork

[? Learn more about network names](#)

Click **Next** to continue

步驟32.在 *Network Name(SSID)* 欄位中，輸入無線網路的服務集標識(SSID)。

步驟33.按一下下一步繼續。 *Configure Radio 2 - Secure Your Wireless Network* 頁面開啟。

Configure Radio 2 - Secure Your Wireless Network

Select your network security strength.

- Best Security (WPA2 Personal - AES)
Recommended for new wireless computers and devices that support this option.
Older wireless devices might not support this option.
- Better Security (WPA Personal - TKIP/AES)
Recommended for older wireless computers and devices that might not support WPA2.
- No Security (Not recommended)

Enter a security key with 8-63 characters.

 Strong

Show Key as Clear Text

[? Learn more about your network security options](#)

Click **Next** to continue

步驟34.點選與要應用於無線網路的網路安全對應的單選按鈕。

·最佳安全性 (WPA2個人 — AES) — 提供最佳安全性，如果您的無線裝置支援此選項，建議使用此選項。

·更好的安全性 — 當存在不支援WPA2的較舊無線裝置時提供安全性。

·無安全性 — 無線網路不需要密碼，任何人都可以訪問。如果選擇無安全性，請跳至步驟 37。

步驟35.在 *Security Key* 欄位中，輸入網路的密碼。

步驟36. (可選) 要在鍵入時檢視密碼，請選中 **Show Key as Clear Text** 覈取方塊以在鍵入時檢視密碼。

步驟37.按一下 **下一步** 繼續。 *Configure Radio 2 - Assign The VLAN ID For Your Wireless Network* 頁面開啟。

Configure Radio 2 - Assign The VLAN ID For Your Wireless Network

By default, the VLAN ID assigned to the management interface for your access point is 1, which is also the default untagged VLAN ID. If the management VLAN ID is the same as the VLAN ID assigned to your wireless network, then the wireless clients associated with this specific wireless network can administer this device. If needed, an access control list (ACL) can be created to disable administration from wireless clients.

Enter a VLAN ID for your wireless network:

VLAN ID: (Range: 1 - 4094)

[? Learn more about vlan ids](#)

Click **Next** to continue

步驟38.在 *VLAN ID* 欄位中，輸入您希望WAP所屬的VLAN的ID編號。

附註： VLAN ID應與連線到WAP的遠端裝置的埠上支援的其中一個VLAN ID匹配。

步驟39.按一下 **下一步** 繼續。 *Enable Captive Portal - Create Your Guest Network* 頁面隨即開啟：

Enable Captive Portal - Create Your Guest Network

Use Captive Portal to set up a guest network, which means that wireless users need to be authenticated before they can access the Internet. For example, a hotel can create a guest network to redirect new wireless users to a page for authentication.

Do you want to create your guest network now?

- Yes
 No, thanks.

[? Learn more about captive portal guest networks](#)

Click **Next** to continue

步驟40.如果要建立訪客網路，請按一下**Yes**單選按鈕。訪客網路要求使用者在使用網際網路之前進行身份驗證。不需要訪客網路。否則，如果您不想建立訪客網路，請點選**No**單選按鈕，並跳至步驟54。

步驟41.按一下**下一步**繼續。*Enable Captive Portal - Name Your Guest Network* 頁面隨即開啟：

Enable Captive Portal - Name Your Guest Network

Your guest network needs a new name, known as an SSID. The name identifies your guest network so that wireless users can find it.

Enter a name for your guest network:

Radio: Radio 1
 Radio 2

Guest Network name:

For example: MyGuestNetwork

[? Learn more about network names](#)

Click **Next** to continue

步驟42.點選與您要放置訪客網路的單選按鈕對應的單選按鈕。

步驟43.在*Guest Network name*欄位中，輸入訪客網路的SSID。

步驟44.按一下**下一步**繼續。*Enable Captive Portal - Secure Your Guest Network* 頁面隨即開啟：

Enable Captive Portal - Secure Your Guest Network

Select your guest network security strength.

- Best Security (WPA2 Personal - AES)
Recommended for new wireless computers and devices that support this option.
Older wireless devices might not support this option.
- Better Security (WPA Personal - TKIP/AES)
Recommended for older wireless computers and devices that might not support WPA2.
- No Security (Not recommended)

Enter a security key with 8-63 characters.



Show Key as Clear Text

[Learn more about your network security options](#)

Click **Next** to continue

步驟45.點選與您要應用於訪客網路的網路安全對應的單選按鈕。

- 最佳安全性 (WPA2個人 — AES) — 提供最佳安全性，如果您的無線裝置支援此選項，建議使用此選項。
- 更好的安全性 — 當存在不支援WPA2的較舊無線裝置時提供安全性
- 無安全性 — 無線網路不需要密碼，任何人都可以訪問。如果選擇無安全性，請跳至步驟48。

步驟46.在 *Security Key* 欄位中，輸入訪客網路的密碼。

步驟47。(可選)要在鍵入時檢視密碼，請選中 **Show Key as Clear Text** 覆取方塊。

步驟48.按一下下一步繼續。啟用強制網路門戶 — 分配VLAN ID頁面開啟：

Enable Captive Portal - Assign The VLAN ID

We strongly recommend that you assign different VLAN ID for your guest network than the management VLAN ID. By doing that, your guest will have no access to your private network.

Enter a VLAN ID for your guest network:

VLAN ID: (Range: 1 - 4094)

[? Learn more about vlan ids](#)

Click **Next** to continue

步驟49.在 *VLAN ID* 欄位中，輸入您想要訪客網路所屬的VLAN的ID編號。

附註：VLAN ID應與連線到WAP的遠端裝置的埠上支援的其中一個VLAN ID匹配。

步驟50.按一下**下一步**繼續。*Enable Captive Portal - Enable Redirect URL*頁面隨即開啟：

Enable Captive Portal - Enable Redirect URL

If you enable a redirect URL, when new wireless users have completed the authentication process, they can be redirected to an alternate startup page.

Enable Redirect URL

Redirect URL :

[? Learn more about redirect urls](#)

Click **Next** to continue

步驟51。（可選）要在無線使用者登入到訪客網路後重定向到網頁，請選中**Enable Redirect URL**覈取方塊。如果不選中**Enable**覈取方塊，請跳至步驟54。

步驟52.在 *Redirect URL* 欄位中，輸入使用者登入訪客網路後想要重新導向的網頁。

步驟53.按一下**下一步**繼續。*Summary - Confirm Your Settings*頁面開啟：

Summary - Confirm Your Settings

Please review the following settings and ensure the data is correct.

Radio 1

Network Name (SSID):	Network A
Network Security Type:	plain-text
Security Key:	
VLAN ID:	1

Radio 2


Network Name (SSID):	Network B
Network Security Type:	plain-text
Security Key:	
VLAN ID:	2

Captive Portal (Guest Network) Summary

Guest Network Radio:	Radio 2
----------------------	---------

Click **Submit** to enable settings on your Cisco Small Business Access Point

Back Submit Cancel



步驟54。(可選) 如果要編輯所做的設定，請按一下上一步。

步驟55。(可選) 如果要退出安裝嚮導並撤消所做的所有更改，請按一下取消。

步驟56.檢查網路和訪客網路設定。按一下**Submit**以啟用WAP上的設定。當WAP啟用您的設定時，將出現一個載入欄。WAP完成後，將開啟*Finish*頁面：

附註：只有在*Confirm Your Settings*頁面上按一下**Submit**時，步驟56才適用。

Device Setup Complete



Congratulations, your access point has been set up successfully. We strongly recommend that you save these settings by writing them down or by copying and pasting them into a text document. You will need these settings later when you add other wireless computers or devices to your network.

Cluster Name:	ciscosb-cluster
Network Name (SSID):	ciscosb
Network Security Type:	plain-text
Security Key:	



Note: To configure WPS, Click "Run WPS" on the Getting Started page, under Initial Setup.

Click **Finish** to close this wizard.

Back

Finish

Cancel

步驟57.按一下**完成**退出安裝嚮導。